



VISION ZERO

ZERO TRAFFIC DEATHS IN MoCo

VISION ZERO IMPLEMENTATION

MAY 2022 UPDATE TO PBTSAC

Overview

Preliminary 2022 Crashes

Quarter 3 Update

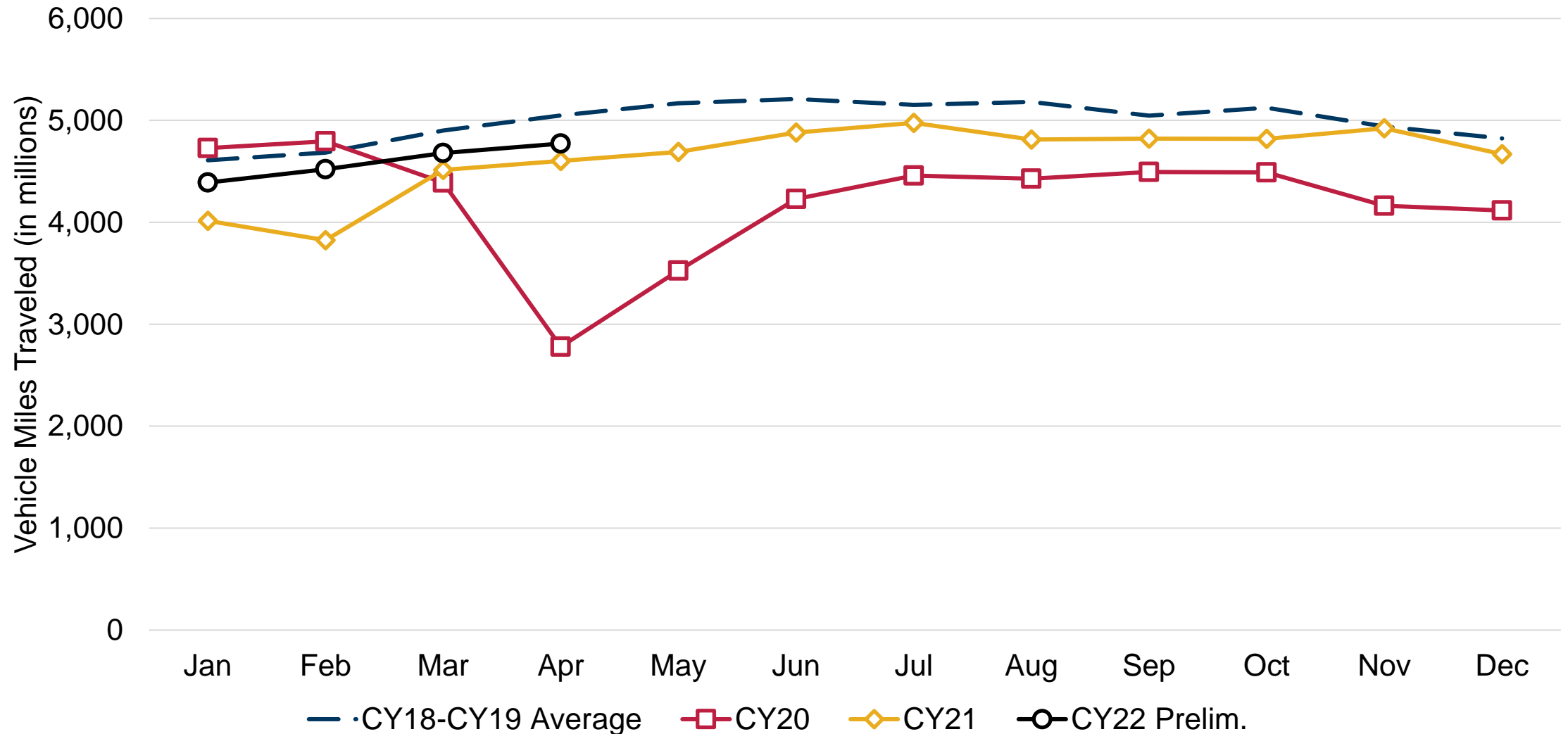




Crash Data

Preliminary 2022 Crash and
Traffic Volume Data

Maryland Traffic Volume



NOTE: This chart displays estimated monthly Vehicle Miles of Travel compared with the previous year based on data collected at approximately 51 continuous count stations throughout the State of Maryland. 4

Note on the Data Presented

Roadway Exclusions

The County Government receives crash data from the Maryland State Police (MSP) for the following local police agencies operating in Montgomery County:

- Montgomery County Police (MCPD)
- Rockville City Police Department (RCPD)
- Gaithersburg Police Department (GPD)
- Maryland-National Capital Park Police, Montgomery County (M-NCPPC Police)
- Takoma Park Police (TPPD)

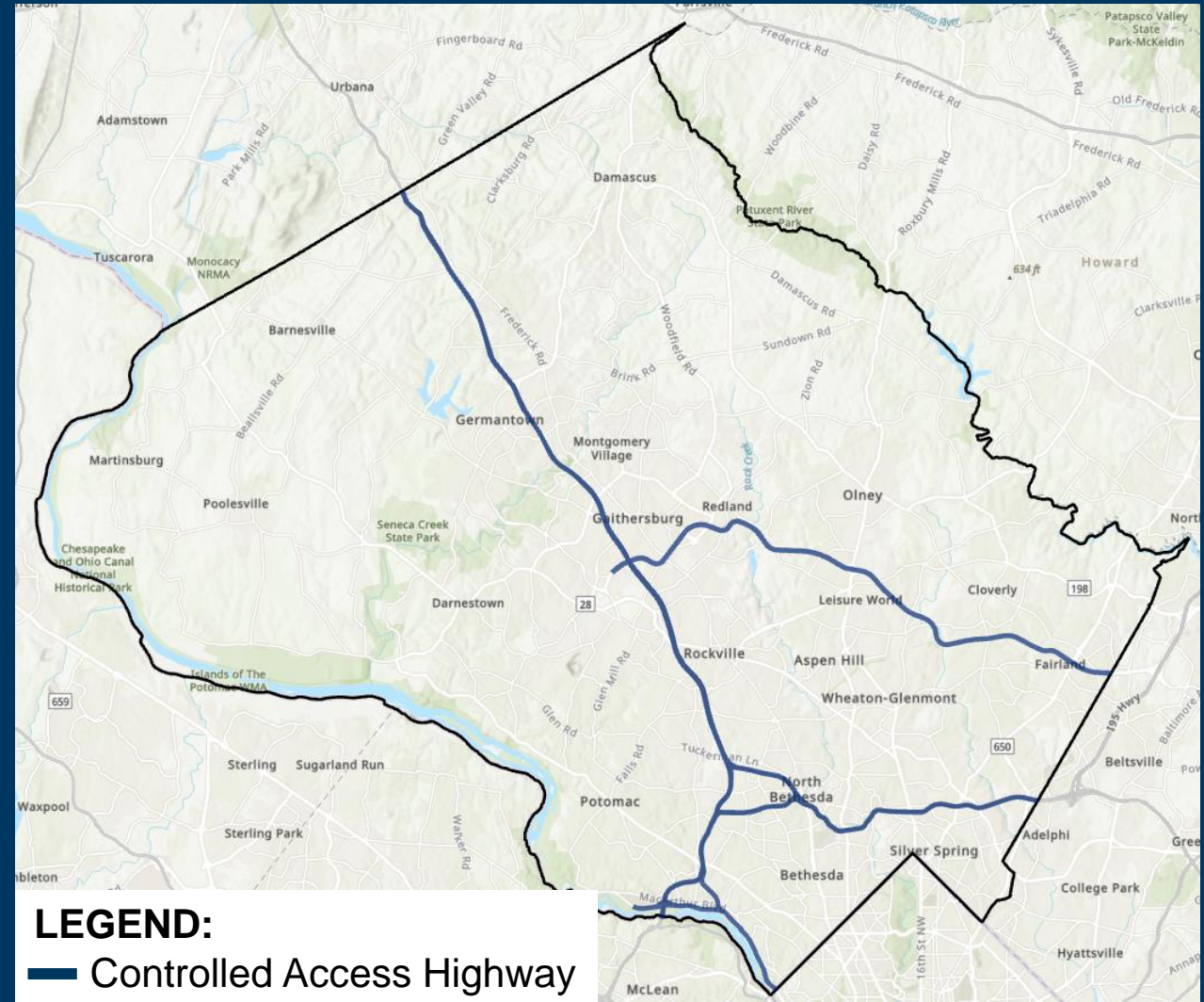
The County Government does not receive data from the following state and federal agencies:

- Maryland State Police (MSP)
- Maryland Transit Authority Police (MTAPD)
- National Park Service Police (NPS PD)

Therefore, the following roadways are excluded from County Government reporting.

- Interstates (I-270, I-370, I-495)
- Intercounty Connector (MD-200)
- National Park Service roads (Clara Barton Parkway and minor access roads)

For final reports covering all roadways, see reporting from the Maryland Department of Transportation – Highway Safety Office at:
<https://zerodeathsmd.gov/resources/crashdata/>



2021 Crash Totals

<u>ALL CRASHES</u>	2021	2020	% Change from 2020	2016 – 2019 Avg.	% Change from 2016-2019 Avg.
Cyclists	121	144	-14%	133	-9%
Drivers / Passengers	8,884	7,569	+17%	11,315	-21%
Pedestrians	332	356	-7%	485	-32%
TOTAL	9,337	8,069	+16%	11,933	-22%

<u>FATAL CRASHES</u>	2021	2020	% Change from 2020	2016 – 2019 Avg.	% Change from 2016-2019 Avg.
Cyclists	0	1	-100%	2	-100%
Drivers / Passengers	26	22	+18%	16	+63%
Pedestrians	7	16	-56%	12	-42%
TOTAL	33	39	-15%	30	+10%

NOTES:

- Includes reports from MCPD, RCPD, GCPD, M-NCPPC Police, and TPPD.

Preliminary 2022 Jan – Apr Crash Totals

<u>ALL CRASHES</u>	2022 Jan-Apr	2021 Jan-Apr	% Change from 2021 Jan-Apr	2016 – 2019 Jan-Apr Avg.	% Change from 2016-2019 Avg.
Cyclists	28	21	+33%	27	+4%
Drivers / Passengers	2,906	2,330	+25%	3,472	-16%
Pedestrians	136	78	+74%	162	-16%
TOTAL	3,070	2,429	+26%	3,661	-16%

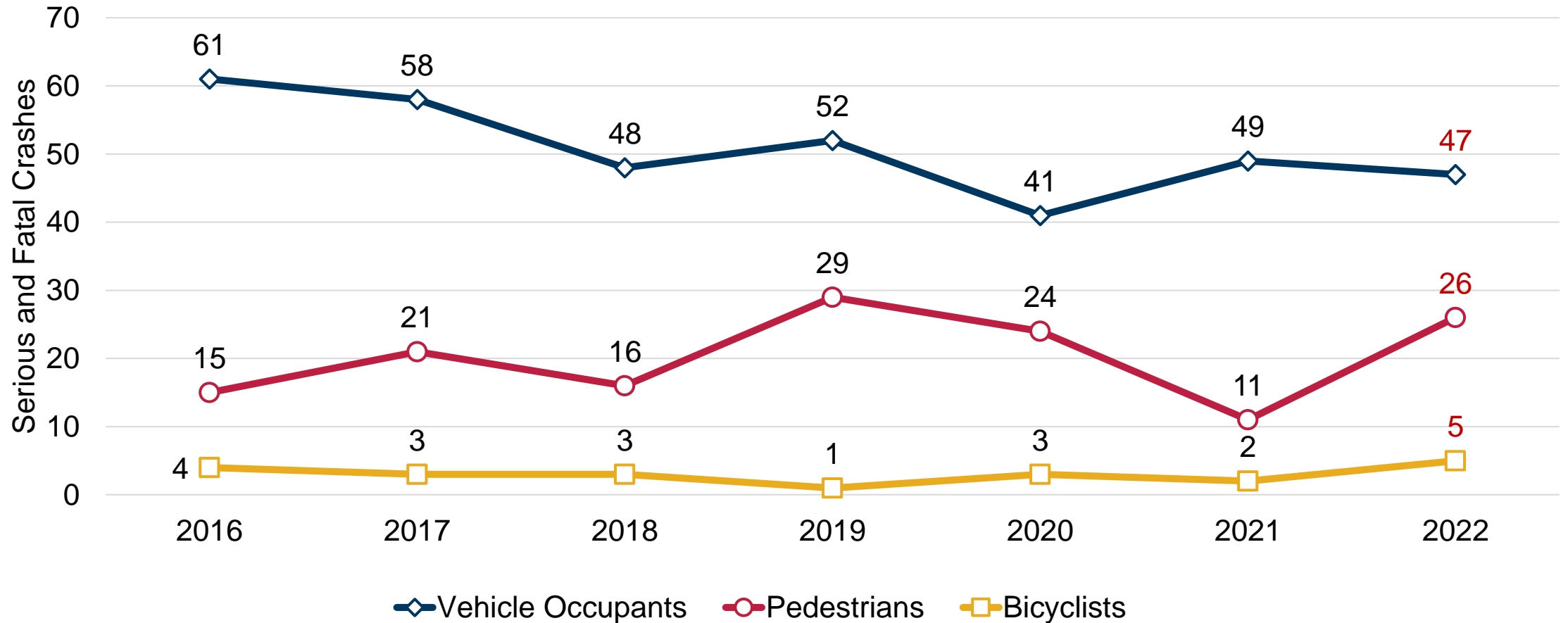
<u>FATAL CRASHES</u>	2022 Jan-Apr	2021 Jan-Apr	% Change from 2021 Jan-Apr	2016 – 2019 Jan-Apr Avg.	% Change from 2016-2019 Avg.
Cyclists	1	0	--	0	--
Drivers / Passengers	7	8	-13%	4	+75%
Pedestrians	4	3	+33%	3	+33%
TOTAL	12	11	+9%	7	+71%

NOTES:

- **Red Text** = The number is preliminary and subject to change.
- Includes reports from MCPD, RCPD, GCPD, M-NCPPC Police, and TPPD.

Serious and Fatal Crashes

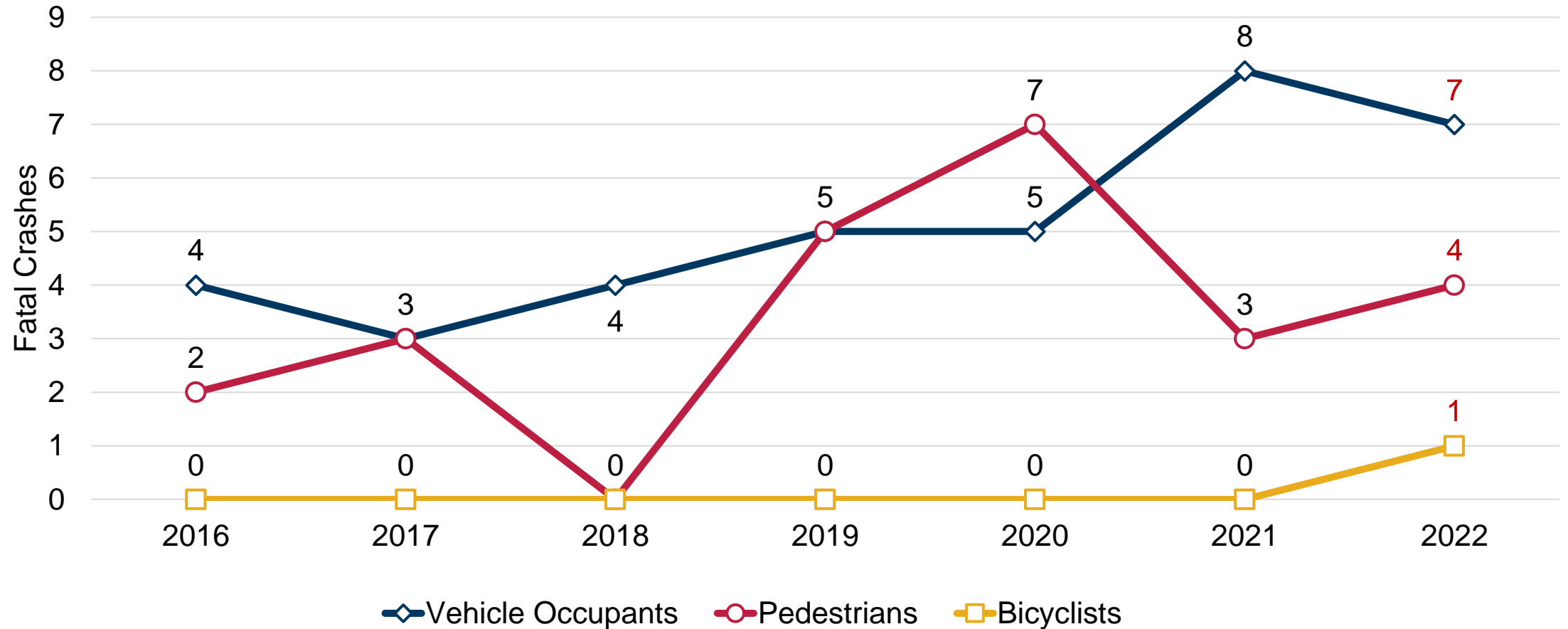
Comparing **January 1 – April 30** for each year



Source: MCPD. Includes MCPD, RPD, TPPD, GPD, and M-NCPPC MC reports. Data retrieved 05/25/22. Includes crashes where at least one party suffered serious or fatal injuries. **2022 data are preliminary.**

Fatal Crashes

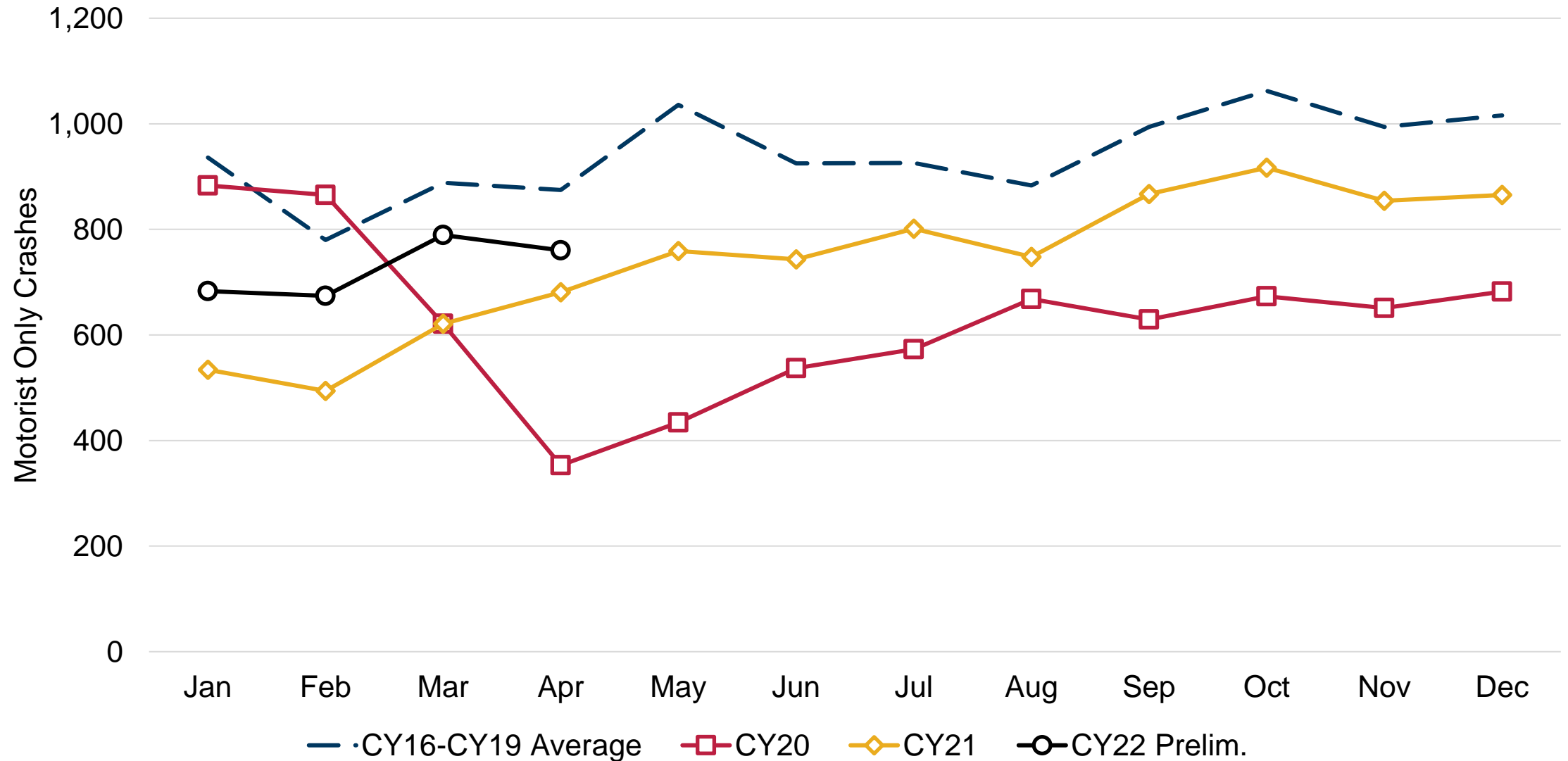
Comparing **January 1 – April 30** for each year



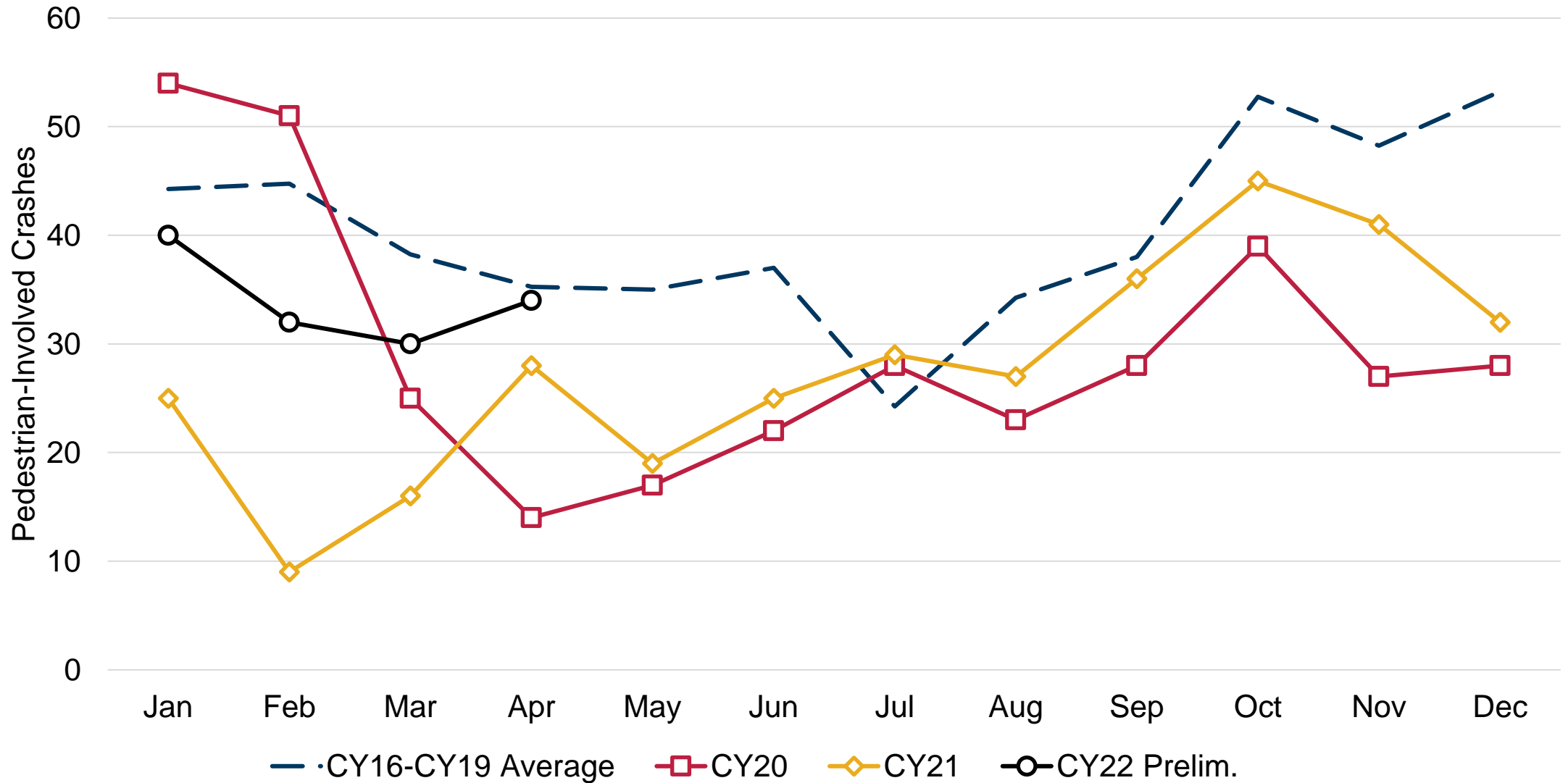
Source: MCPD CRU. Data retrieved 05/25/22.

Includes crashes where at least one party suffered fatal injuries. **2022 data are preliminary.**

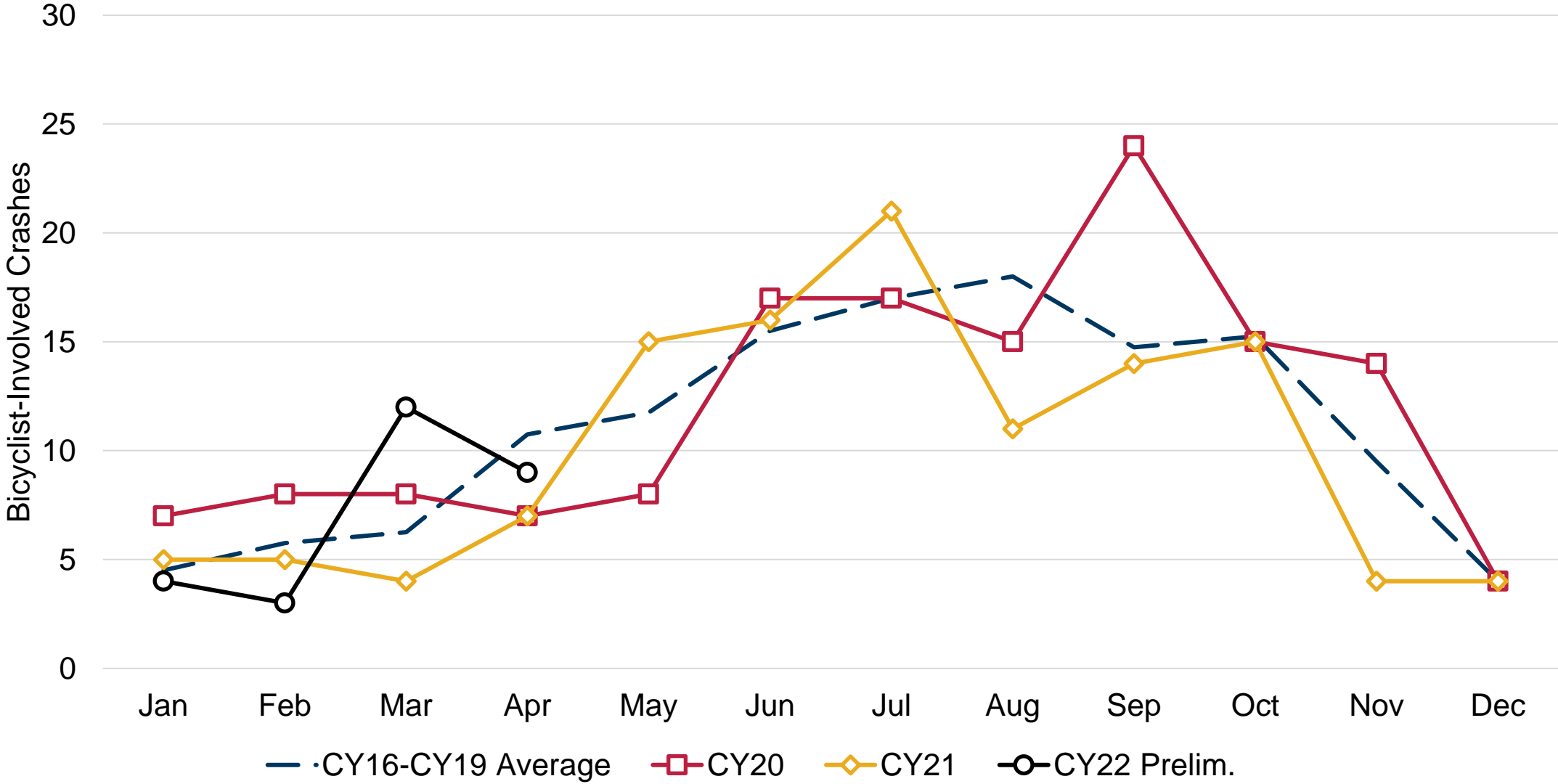
Motorist Only Collisions by Month



Pedestrian Collisions by Month



Bicyclist Collisions by Month





Implementing Vision Zero

Project
Highlights

ACTION PLAN & WORK PLAN

How the long-term and short-term plans relate

2030 Plan	Vision Zero						
Plan Pillars	Complete Streets		Multimodal Future			Culture of Safety	
Safe System Alignment	Safe Streets	Safe Speeds	Safe Transportation	Safe & Sustainable Communities	Safe Vehicles	Safe People	Safe Post-Crash Emergency Response and Care
Actions	17 Actions	3 Actions	10 Actions	1 Action	2 Actions	10 Actions	2 Actions
FY22 Work Plan	63 Tasks*	4 Tasks	15 Tasks	1 Task	2 Tasks	22 Tasks	2 Tasks

*There are 66 total tasks under Safe Streets, but 3 are also listed under Safe Transportation, so removed from chart above to avoid double counting.

Latest Updates on Vision Zero Website

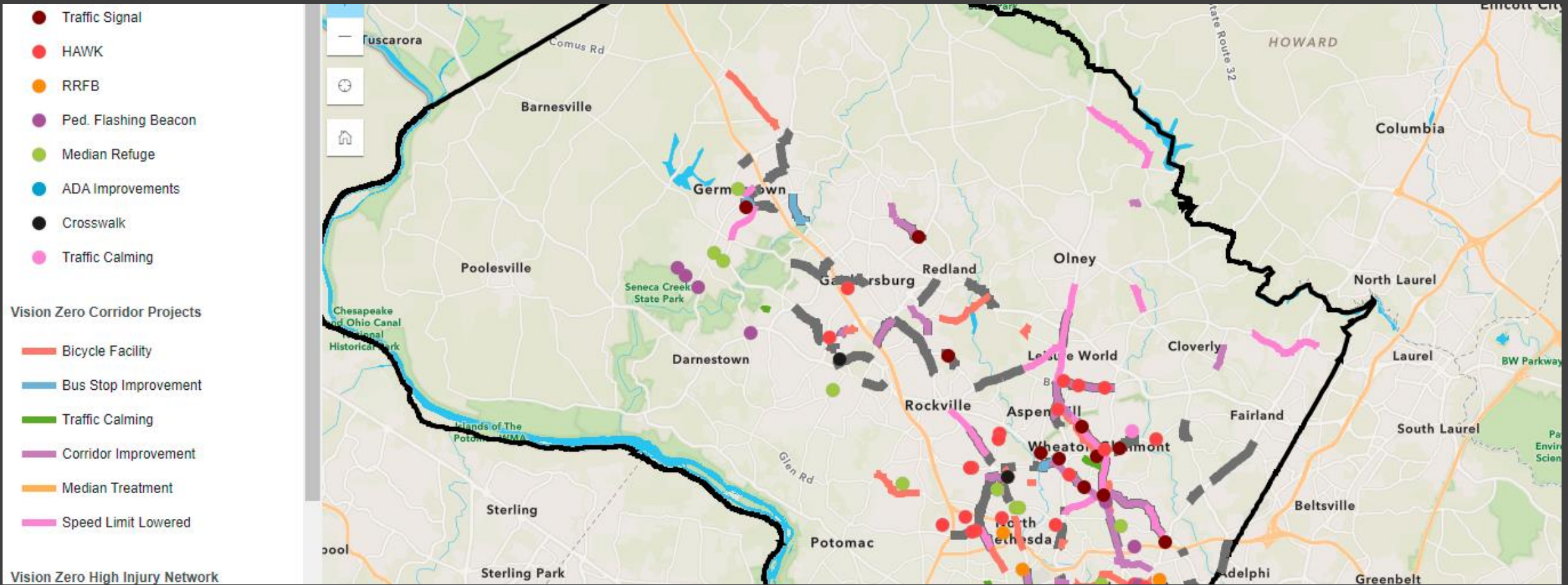
The screenshot shows the Montgomery County, MD Government website. At the top left is the county seal and the text "Montgomery County, MD Government". To the right are social media icons and a search bar. Below the header is a navigation menu with links: "VZ Home", "About", "2030 Plan", "Action Plan", "Your Participation", "Calendar", "VZ Data", "Equity", "Additional Resources", and "Contact".

The main content area features a large image of County Executive Marc Elrich and another man standing next to a HAWK signal light. The signal light has a sign that reads: "PUSH BUTTON TO CROSS ASPEN HILL ROAD", "START CROSSING Watch For Turning Vehicles", "DON'T START Finish Crossing If Started TIME REMAINING To Finish Crossing", and "PEDESTRIANS SHOULD NOT BE IN CROSSWALK".

Below the image is a headline: "County Executive Elrich Committed to Improving Pedestrian Safety". The text below reads: "Montgomery County Executive Marc Elrich is committed to the Vision Zero Initiative to eliminate traffic deaths in the County. He is working with many departments and agencies to create steps that will make the streets safer for pedestrians, bicyclists and drivers. One commitment is toward installing more high intensity activated crosswalk (HAWK) signal lights at key intersections around the County." A green button labeled "Learn More about HAWK Signals" is positioned below the text.

Below the article is a section titled "Montgomery County's Goal to End Traffic Deaths". The text states: "Montgomery County is one of the first county governments in the United States to initiate a Vision Zero plan. The County has put resources in place to eliminate serious and fatal collisions on County roads for vehicle occupants (drivers and passengers), pedestrians, and bicyclists by the end of 2030. [Learn more about the Action Plan.](#)"

At the bottom of this section is a red arrow pointing right, followed by a circular icon containing a checklist and the text "VISION ZERO QUARTERLY IMPLEMENTATION UPDATES".



Project Map

Find the latest details on projects in your neighborhood by checking out the [interactive project map](#), visiting the [MCDOT project page](#), or the [SHA project portal](#).

RITCHIE PARK SCHOOL
1514



QUESTIONS?