



**OUR PLAN TO ELIMINATE FATALITIES AND
SERIOUS INJURIES ON OUR ROADS**

MID-COUNTY CITIZENS ADVISORY BOARD • 06/15/2021



RECENT & UPCOMING ACTIVITY



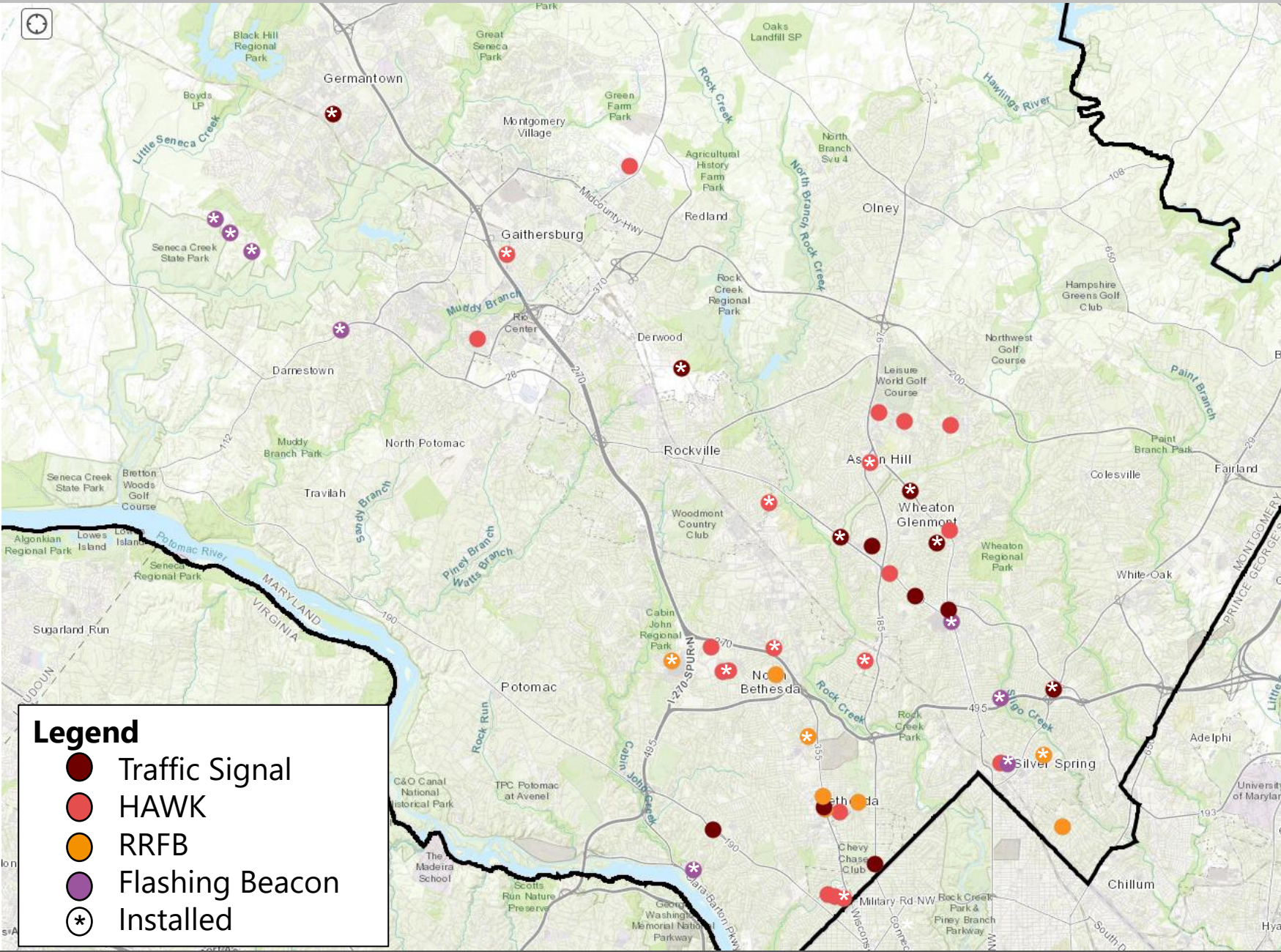
WHEATON CBD IMPROVEMENTS



MCDOT and SHA have partnered to make numerous improvements for safety in the Wheaton Triangle:

- 1 - Lower speed limit on Veirs Mill Rd
- 2 - Crosswalk upgrade
- 3 - Crosswalk upgrade
- 4 - Intersection improvement at new HQ
- 5 - New sidewalk and ped beacon
- 6 - Lower speed limit on Georgia Ave
- 7 - Narrowed travel lanes on Georgia Ave
- 8 - Off-peak parking on Georgia Ave
- 9 - Crosswalk upgrade with planned signal timing upgrade for pedestrians
- 10 - Non-traversable median
- 11 - New full traffic signal
- 12 - Crosswalk upgrades
- 13 - Lower speed limit on University Blvd

NEW SIGNALS AND BEACONS



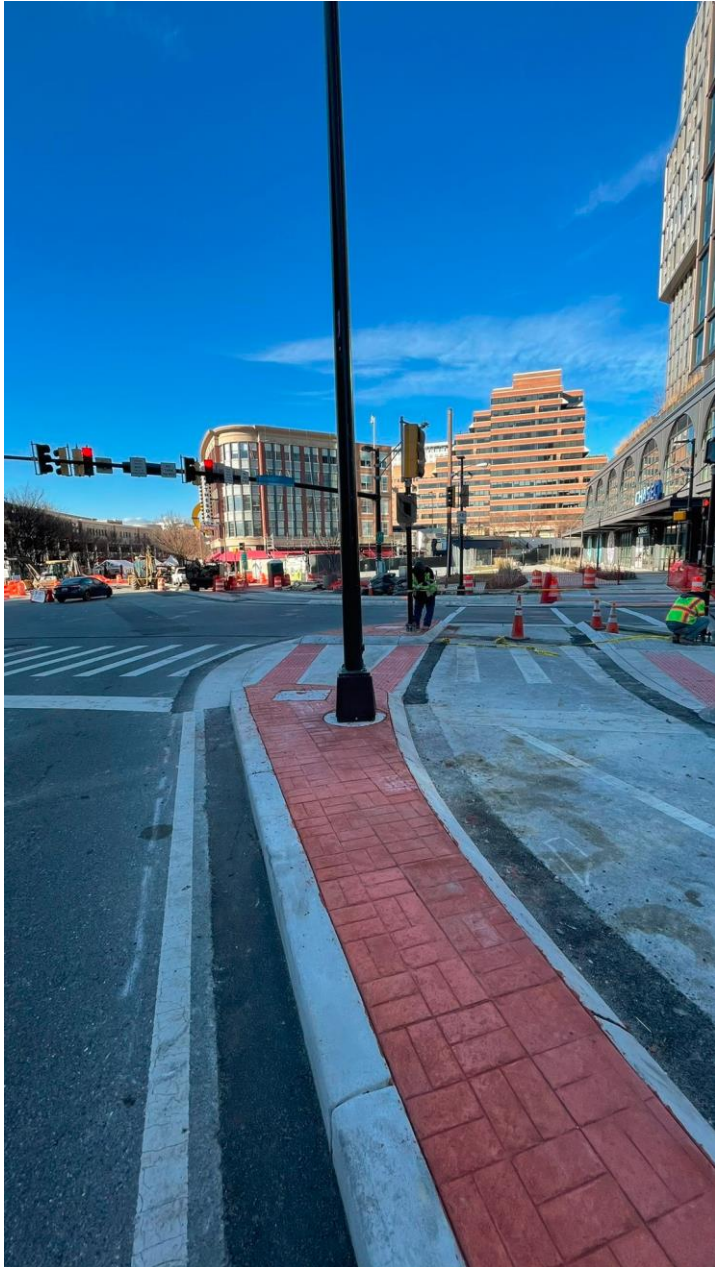
Scheduled for installation in 2021 are:

Traffic Signals:

- Georgia Ave & Price Ave
- River Rd & Braeburn Pkwy (SHA)
- Veirs Mill Rd & Norris Dr (SHA)

Pedestrian Beacons:

- Spring Street and First Ave (activated before end of June)
- Twinbrook Parkway and Twinbrook Recreation Center (installed)
- Muddy Branch Road and Muddy Branch Square Shopping Center
- Snouffer School Road and Sweet Autumn Drive
- 6705 Rockledge Drive
- Layhill Road and Greenery Lane (SHA project)
- Veirs Mill Road and Andrew Street



The following bikeway projects are currently under design for 2021 or will be under construction by summer 2021.

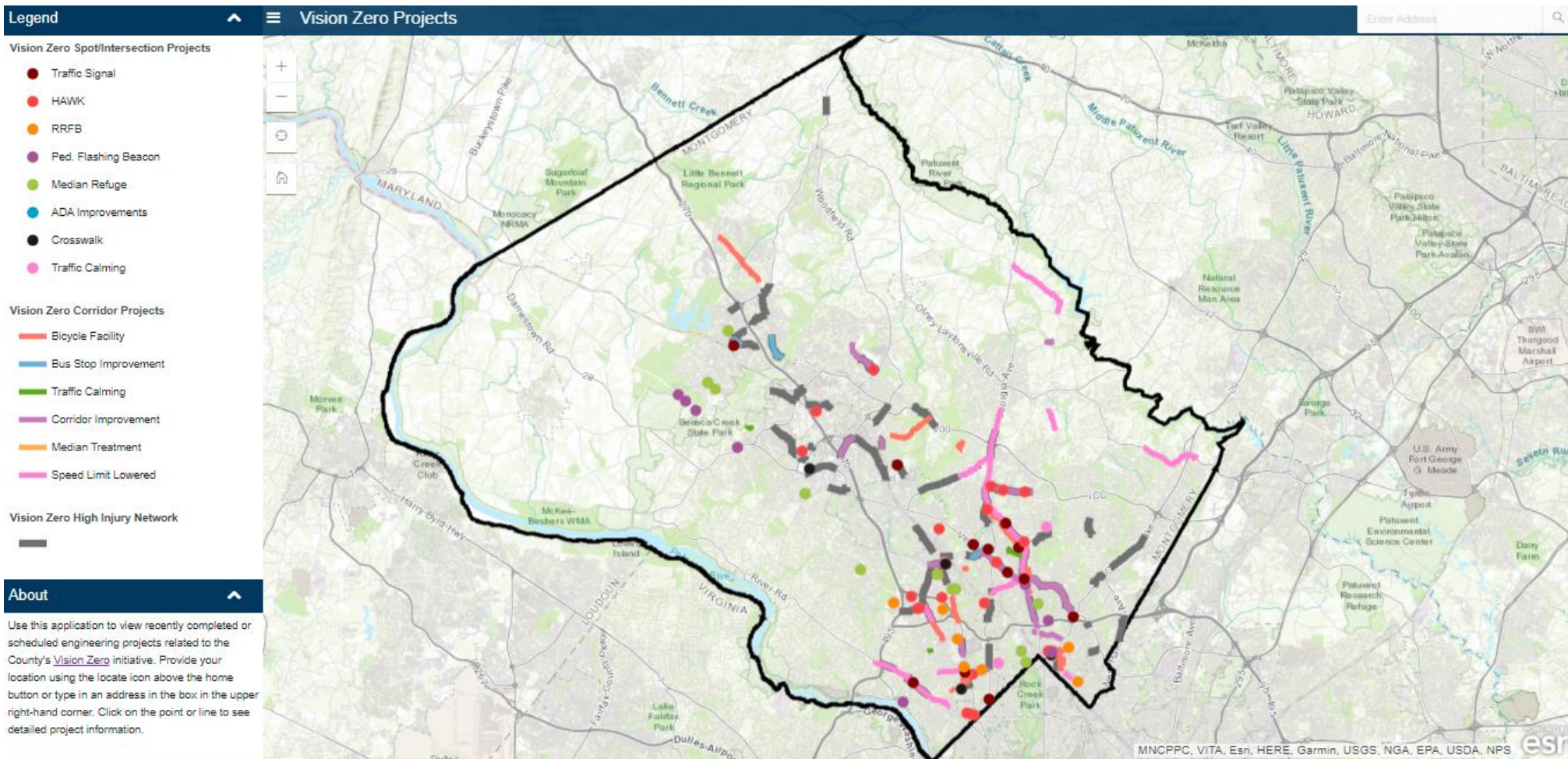
Design

- Aspen Hill Neighborhood Greenway Pilot (temporary installation currently)
- Heritage Triangle Trail – Phase I, Dr. Bird/Norwood Road from MD 108 to Layhill Road
- Amherst Avenue from Arcola Avenue to Windham Lane
- Fenton Street from Cameron Street to King Street
- Cheltenham Drive from Woodmont Avenue to Pearl St
- Metropolitan Branch Trail

Construction

- Emory Lane and Muncaster Mill Road shared use path
- Kensington Parkway Shoulder Improvements
- Bethesda Avenue/Willow Lane (Capital Crescent Surface Trail Phase I) from Woodmont Avenue to Wisconsin Avenue
- Woodmont Avenue Phase I from Montgomery Lane to Miller Avenue
- Montgomery Lane from Woodmont Avenue to Rockville Pike
- Marinelli Road from Rockville Pike to Nebel Street
- Grove St from Bonifant Street to Sligo Avenue
- Cameron Street to Planning Place
- Frederick Road from Stringtown Road to Brink Road

VISION ZERO PROJECT MAP



MCDOT and CountyStat developed an interactive project map to highlight Vision Zero related projects happening across the county.

Since the initial launch of the map, SHA projects have been included such as speed limit reductions on major highways and signal projects.

The map can be found on the [Vision Zero homepage](#).



The new street design guide standards under development by MCDOT and the Planning Department set a target speed of 20 MPH for downtown and neighborhood streets. To test the potential safety benefits of 20MPH target speed limits, MCDOT is piloting the treatments on downtown streets to determine what treatments and messaging are effective in getting drivers to travel at 20MPH.

The Phase I Pilot Area will cover streets in Germantown, Woodglen, and Long Branch. Depending on the results of this pilot, it will be expanded to other areas in the county.

STUDY FOR PEDESTRIAN NAVIGATION FOR VISUALLY IMPAIRED RESIDENTS IN URBAN CENTERS



The County Department of Transportation applied for and received a grant from the Metropolitan Washington Council of Governments to examine traveling in our urban areas and transit accessibility for people with low or no vision. The study will examine existing conditions, stakeholder feedback, and leading practices to make recommendations on improving the pedestrian environment.

VISION ZERO YOUTH AMBASSADORS



The 2021 Vision Zero Youth Ambassador Program consisted of 28 Montgomery County high-school students and trains them to become road safety leaders in their community. Ambassadors attended a special virtual training on road safety, cause campaign (Ambassador Plan) development, and public speaking. The program ended with each ambassador creating and executing an Ambassador Plan where each Ambassador finished a safety project for their community. Projects included art contests, safety petitions, research projects, and social media campaigns. Ambassadors received SSL hours for their participation.



2030 PLAN RELEASE AND REVIEW



**OUR PLAN TO ELIMINATE FATALITIES AND
SERIOUS INJURIES ON OUR ROADS BY 2030**
2030 ACTION PLAN • FY22-23 WORK PLAN
APRIL 2021 PUBLIC COMMENT DRAFT 1.0

A draft of the Vision Zero 2030 Plan was released by the County Executive on April 15.

Five listening sessions, one for each county region, were held in April and May.

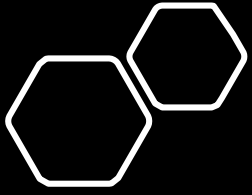
The comment period closes Monday, June 21.

**THANK YOU TO MCCAB FOR
PROVIDING COMMENTS DURING
THE PHASE I OUTREACH!!**

THANK YOU



Group photo of County employees involved in designing and building the 2nd/Spring protected intersection.



Wheaton CBD

MC \rightarrow DOT



Wheaton
Central
Business
District





Veirs Mill (MD 586)

Speed Limit Reduction

Veirs Mill (MD 586) &
University (MD 193)
Continental Crosswalks





Reedie &
Veirs Mill (MD 586)
Continental Crosswalks



Grandview & Reddie
Intersection
Improvement Project

5

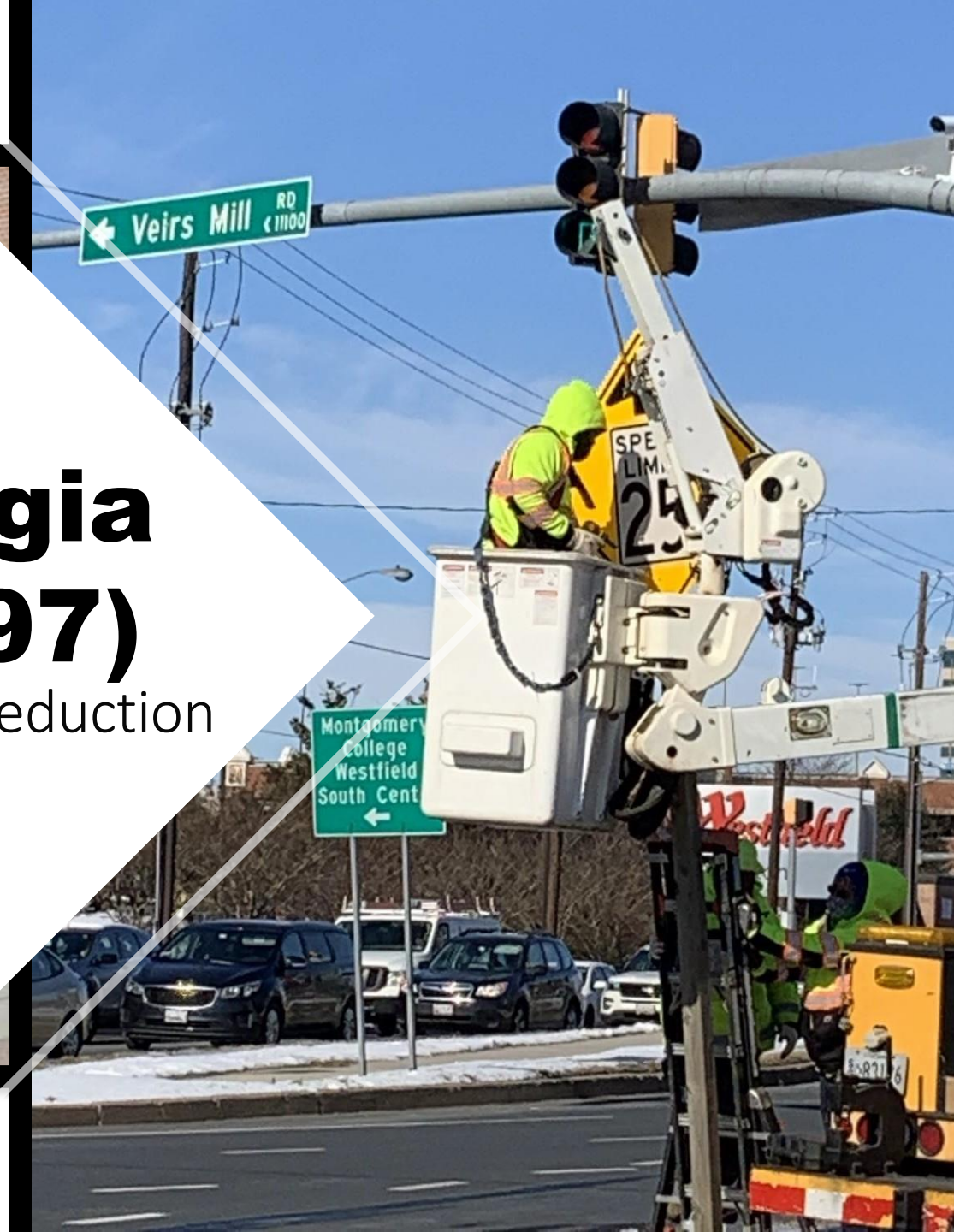
Georgia (MD 97) &
Veirs Mill (MD 586)
New Sidewalk
Continental Crosswalk
Ped Beacon





Georgia (MD 97)

Speed Limit Reduction



7



Georgia
(MD 97)
Lane Narrowing

Georgia (MD 97)

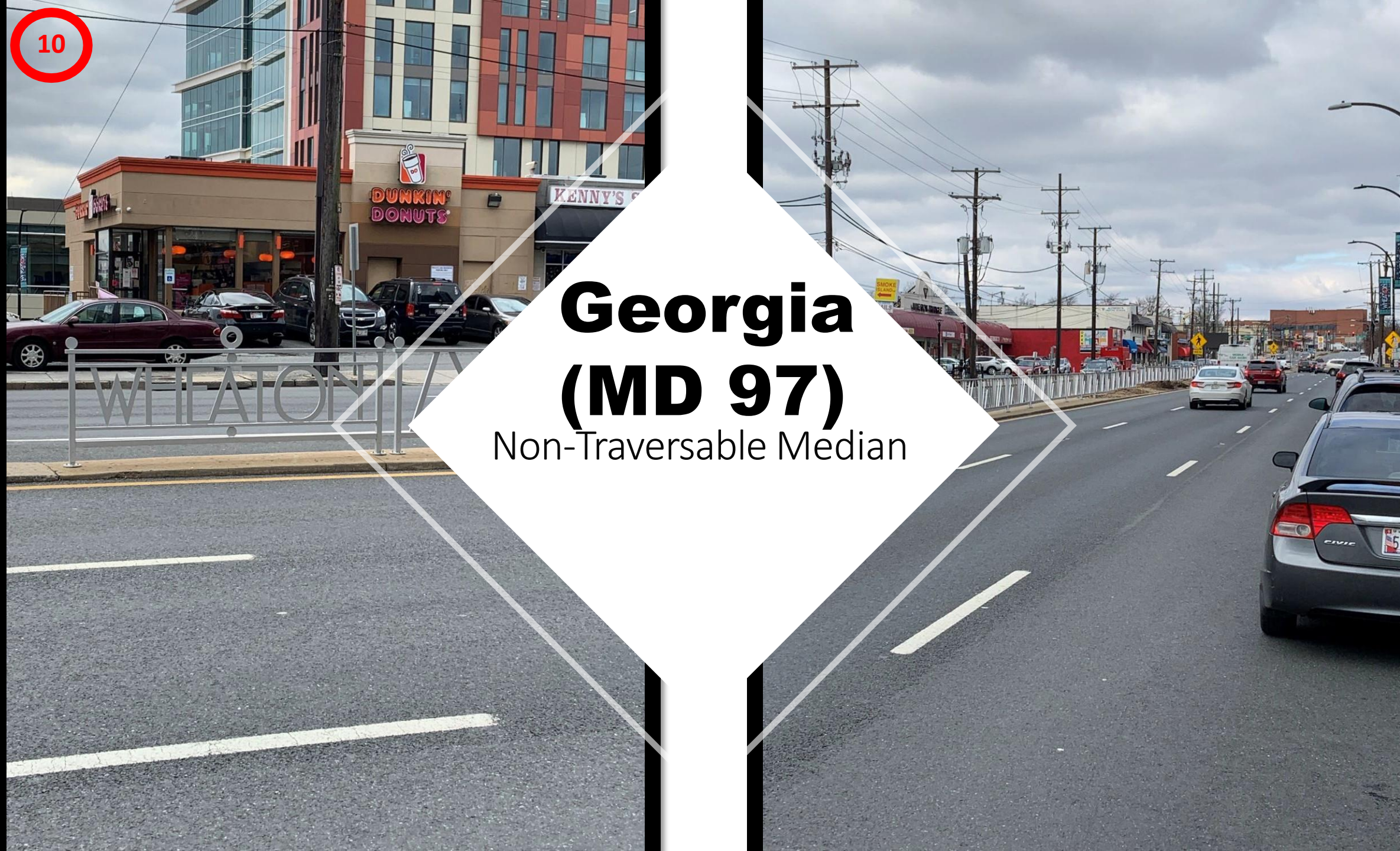
On Street Parking



9

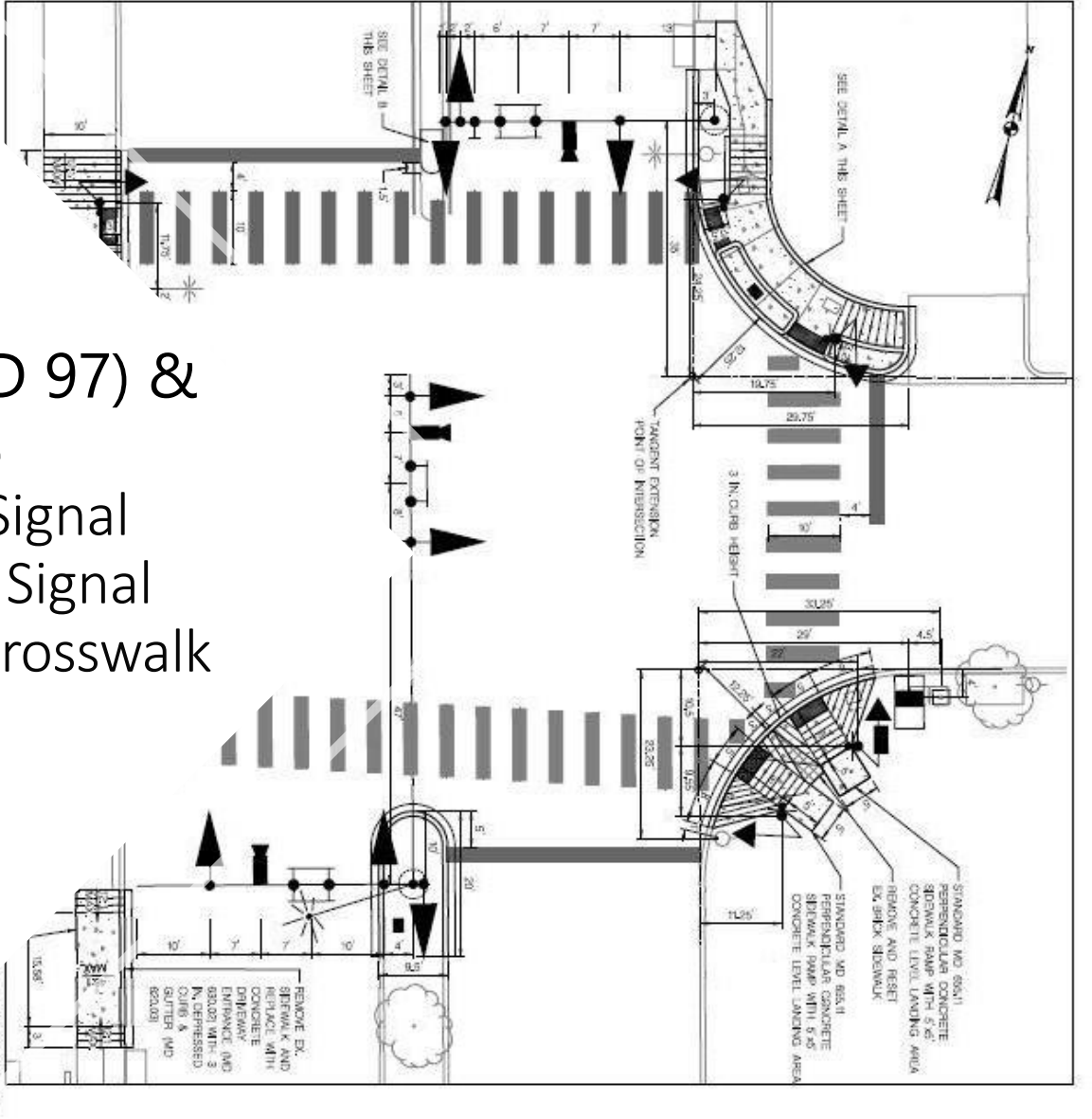
Georgia (MD 97) & Reddie
Continental Crosswalks
(LPI to follow)



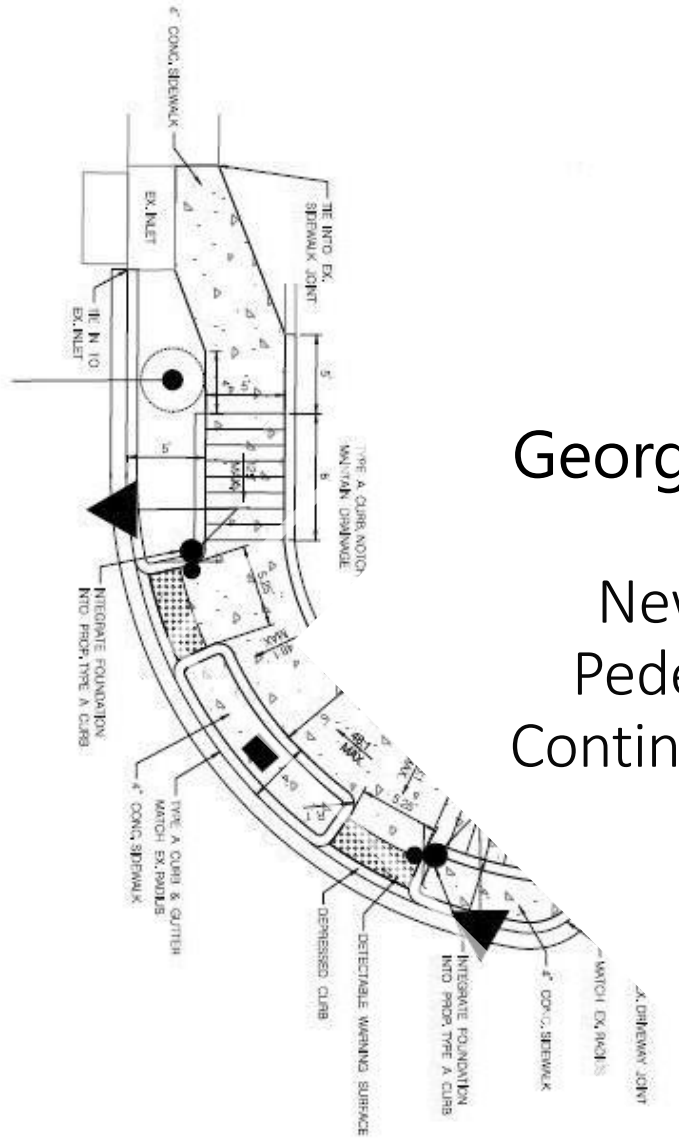


Georgia (MD 97)

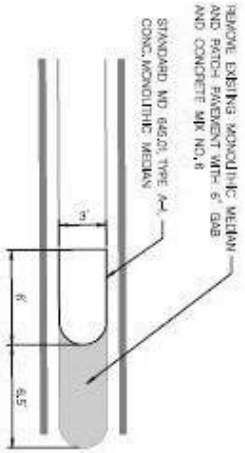
Non-Traversable Median



Georgia (MD 97) & Price New Full Signal Pedestrian Signal Continental Crosswalk




DETAIL A - NORTHEAST RAMP
SCALE: 1" = 5'



REMOVE EXISTING MOUNTING MEDIUM AND PATCH PAVEMENT WITH 6\"/>

STANDARD MD 660.1 TYPE A-1 CONC. MOUNTING MEDIUM



Georgia (MD 97) &
University (MD 193)
Continental Crosswalks



University (MD 193)

Speed Limit Reduction



Wheaton Central Business District

Safer by
Design

