



# ETON SQUARE



*Cider Barrel Drive,  
GERMANTOWN, MD*

**MPDU UNIT TYPE:** *Four Level Townhouse*  
**Price:** *\$183,436*  
**Bedrooms:** *3*  
**Baths:** *2 1/2*  
**Square Footage:** *1,673 square feet*  
**HOA Fees:** *\$76 per month*  
**Down payment/  
 Closing Costs:** *\$12,840*  
**Good Faith Deposit:** *\$1,834*

## INTERIOR:

**Ground Floor Level:** *One Car Garage, Foyer, Storage, Mechanical, and Powder Room*  
**Second Floor Level:** *Living/Dining, Kitchen, Breakfast, and Deck (optional)*  
**Third Floor Level:** *Two Bedrooms, a Full Bath, and Laundry*  
**Loft Floor Level:** *One Bedroom, a Full Bath*

- Open Layout at the Second Floor Level
- Second Floor Level 9 feet floor to Ceiling Height
- Wall to Wall Carpeting
- Central AC and Heating System
- Pre-wired Cable TV and Phone System
- Energy Star Certification

## APPLIANCES:

- Refrigerator
- Gas Range
- Dishwasher
- Washer and Dryer Hook-ups

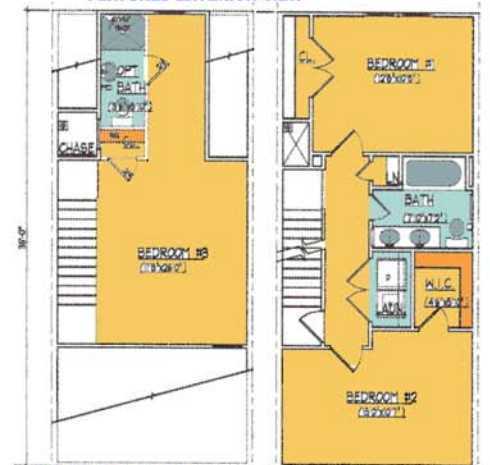
## EXTERIOR:

- Full Brick Fronts
- High Pitch Roof Design (6.25x12)
- Landscaped Front Yard
- Professionally Managed and Maintained Common Areas

[CLICK HERE FOR A MAP](#)



FEATURED EXTERIOR VIEW



LOFT LEVEL PLAN

SECOND LEVEL PLAN



FIRST LEVEL PLAN

BASEMENT LEVEL PLAN