

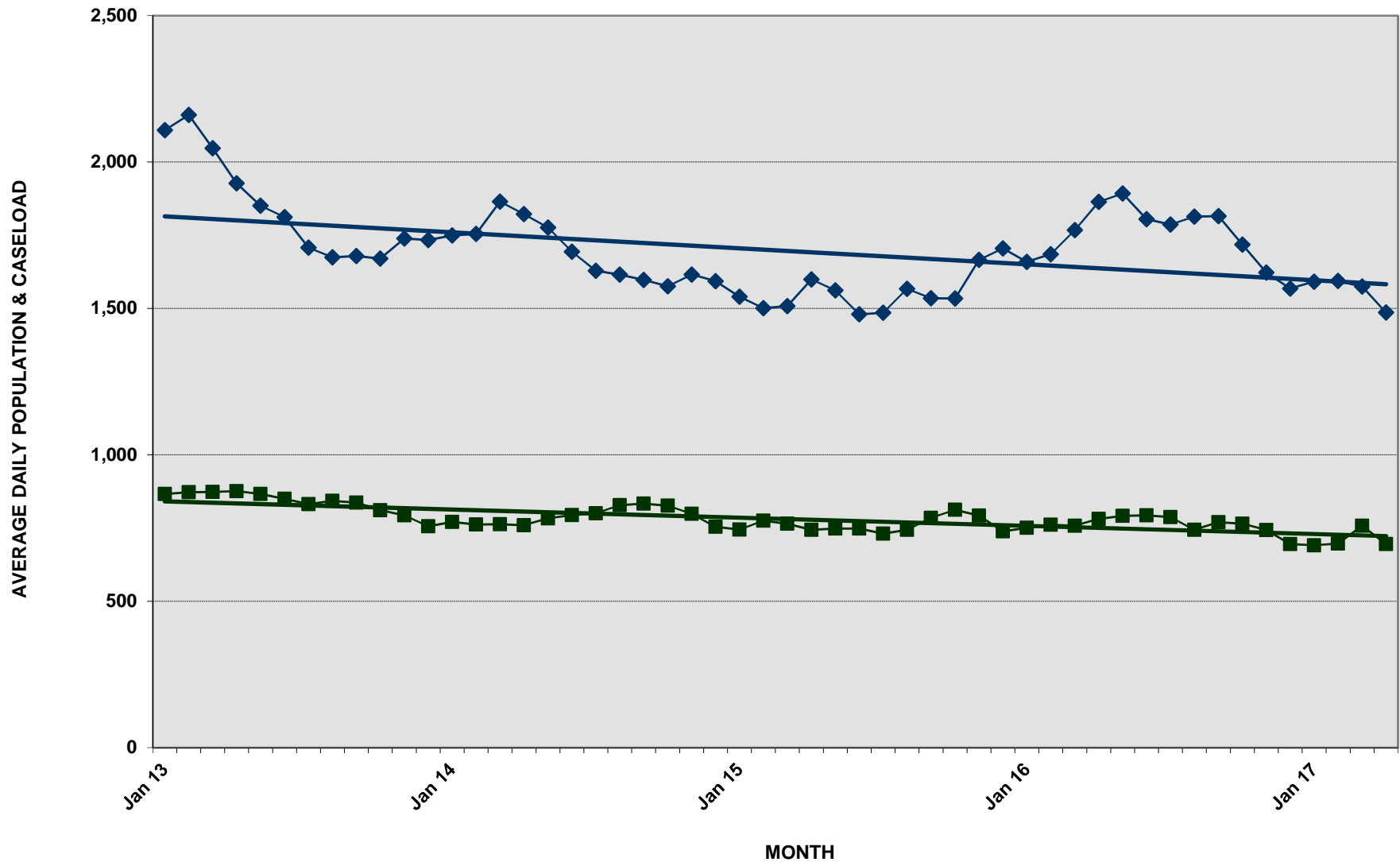


# DEPARTMENT OF CORRECTION AND REHABILITATION

## PRE-TRIAL AVERAGE DAILY CASELOAD \*

### DETENTION SERVICES AND PRE-RELEASE AVERAGE DAILY POPULATION

JANUARY 1, 2013 - APRIL 30, 2017



\* New Jail Opens, MCCF March 2003 = 902

\* PTS Average Caseload -Number of Criminal Justice Clients under Pre-Trial Services (ACS, IPSA, PTSU)

◆ PTS Average Caseload    ■ DOCR ADP



**DEPARTMENT OF CORRECTION AND REHABILITATION**  
**PRE-TRIAL AVERAGE DAILY CASELOAD\***  
**DETENTION SERVICES AND PRE-RELEASE AVERAGE DAILY POPULATION**  
**JANUARY 2013 - PRESENT**

**YEAR 2013**

DIVISION	JAN	FEB	MAR	APR	MAY	JUN	JUL	AUG	SEP	OCT	NOV	DEC	13
MCDC	97	96	85	96	91	88	83	92	89	85	76	71	88
PRRS	137	140	157	153	163	157	149	149	143	148	148	153	150
MCCF	631	637	630	627	612	605	600	602	605	579	572	532	603
<b>Average (ADP)</b>	<b>866</b>	<b>872</b>	<b>873</b>	<b>876</b>	<b>866</b>	<b>850</b>	<b>832</b>	<b>843</b>	<b>837</b>	<b>811</b>	<b>796</b>	<b>756</b>	<b>840</b>
<b>PTS Average Caseload</b>	<b>2,109</b>	<b>2,161</b>	<b>2,047</b>	<b>1,927</b>	<b>1,851</b>	<b>1,812</b>	<b>1,708</b>	<b>1,675</b>	<b>1,679</b>	<b>1,670</b>	<b>1,739</b>	<b>1,734</b>	<b>1,843</b>

**YEAR 2014**

DIVISION	JAN	FEB	MAR	APR	MAY	JUN	JUL	AUG	SEP	OCT	NOV	DEC	14
MCDC	81	75	78	83	77	79	73	78	75	71	78	69	76
PRRS	144	128	127	123	129	143	158	155	147	154	160	162	144
MCCF	546	559	558	553	578	573	569	594	611	603	561	524	569
<b>Average (ADP)</b>	<b>771</b>	<b>762</b>	<b>763</b>	<b>759</b>	<b>783</b>	<b>795</b>	<b>801</b>	<b>828</b>	<b>833</b>	<b>827</b>	<b>798</b>	<b>754</b>	<b>789</b>
<b>PTS Average Caseload</b>	<b>1,749</b>	<b>1,755</b>	<b>1,865</b>	<b>1,822</b>	<b>1,776</b>	<b>1,694</b>	<b>1,629</b>	<b>1,616</b>	<b>1,597</b>	<b>1,576</b>	<b>1,616</b>	<b>1,593</b>	<b>1,691</b>

**YEAR 2015**

DIVISION	JAN	FEB	MAR	APR	MAY	JUN	JUL	AUG	SEP	OCT	NOV	DEC	15
MCDC	77	77	69	64	75	67	73	82	80	76	75	68	74
PRRS	162	163	164	162	166	162	154	147	146	137	135	138	153
MCCF	505	536	532	518	507	519	503	515	559	600	583	533	534
<b>Average (ADP)</b>	<b>745</b>	<b>775</b>	<b>765</b>	<b>744</b>	<b>748</b>	<b>748</b>	<b>731</b>	<b>744</b>	<b>784</b>	<b>812</b>	<b>792</b>	<b>739</b>	<b>761</b>
<b>PTS Average Caseload</b>	<b>1,540</b>	<b>1,501</b>	<b>1,508</b>	<b>1,599</b>	<b>1,562</b>	<b>1,480</b>	<b>1,485</b>	<b>1,567</b>	<b>1,535</b>	<b>1,534</b>	<b>1,666</b>	<b>1,705</b>	<b>1,557</b>

**YEAR 2016**

DIVISION	JAN	FEB	MAR	APR	MAY	JUN	JUL	AUG	SEP	OCT	NOV	DEC	16
MCDC	73	67	71	75	72	71	71	61	67	69	60	59	68
PRRS	124	119	124	132	130	134	130	122	124	126	123	119	126
MCCF	554	575	563	574	589	588	586	561	580	569	560	517	568
<b>Average (ADP)</b>	<b>750</b>	<b>761</b>	<b>758</b>	<b>781</b>	<b>792</b>	<b>793</b>	<b>787</b>	<b>744</b>	<b>770</b>	<b>765</b>	<b>743</b>	<b>695</b>	<b>762</b>
<b>PTS Average Caseload</b>	<b>1,659</b>	<b>1,685</b>	<b>1,768</b>	<b>1,864</b>	<b>1,893</b>	<b>1,805</b>	<b>1,787</b>	<b>1,814</b>	<b>1,815</b>	<b>1,718</b>	<b>1,623</b>	<b>1,568</b>	<b>1,750</b>

**2017**

DIVISION	JAN	FEB	MAR	* APR	MAY	JUN	JUL	AUG	SEP	OCT	NOV	DEC	17
MCDC	58	59	71	66									64
PRRS	124	129	124	121									124
MCCF	510	508	563	509									522
<b>Average (ADP)</b>	<b>691</b>	<b>697</b>	<b>758</b>	<b>696</b>									<b>710</b>
<b>PTS Average Caseload</b>	<b>1,591</b>	<b>1,594</b>	<b>1,575</b>	<b>1,486</b>									<b>1,562</b>

\*\*ADP\*\* - Average Daily Population (Include Weekenders)

\*\*PTS Average Caseload\*\* - Number of Criminal Justice Clients under Pre-Trial Services (ACS, IPSA, PTSU)

\* April 1, 2017 - April 30, 2017