

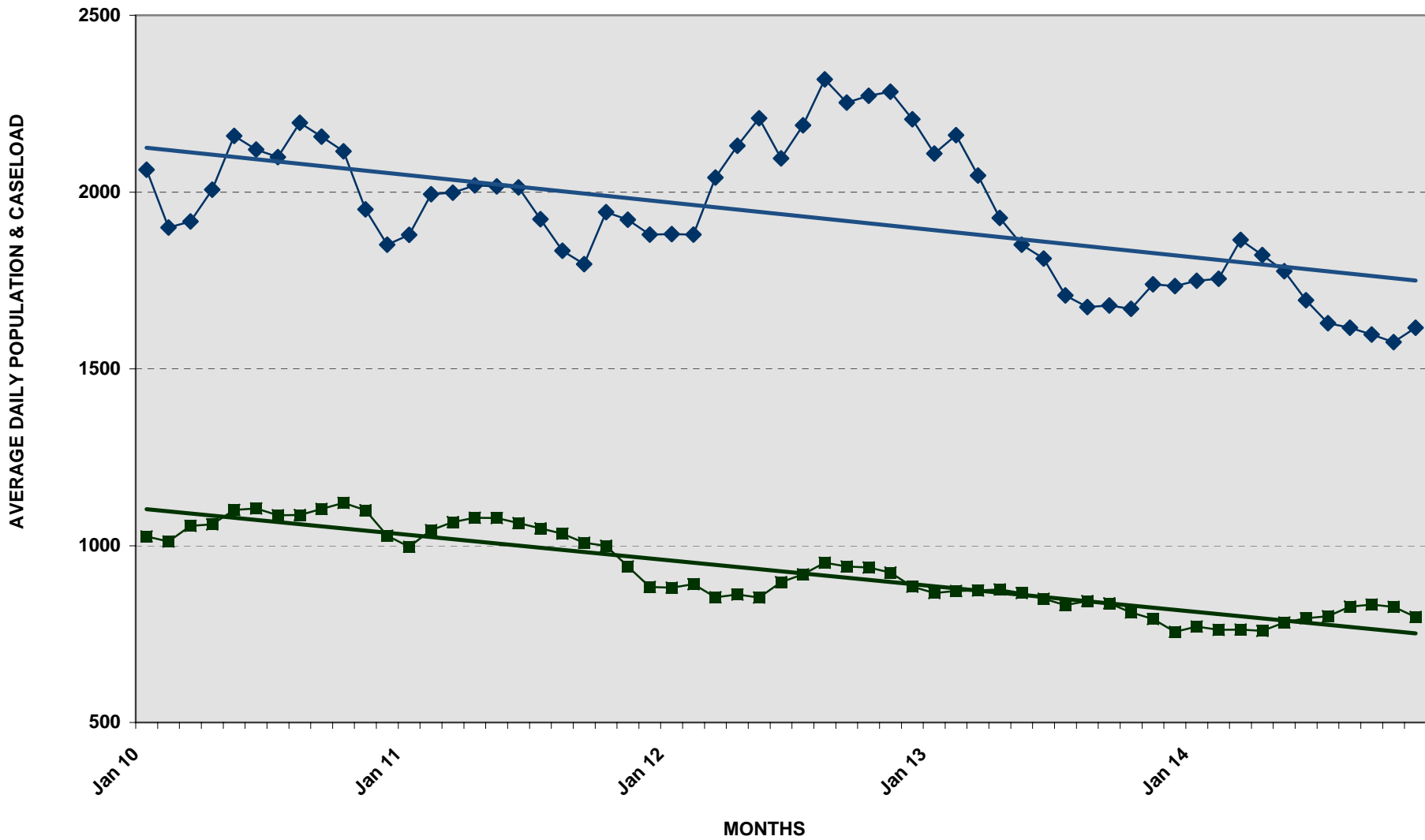


DEPARTMENT OF CORRECTION AND REHABILITATION

PRE-TRIAL AVERAGE DAILY CASELOAD*

DETENTION SERVICES AND PRE-RELEASE AVERAGE DAILY POPULATION

JANUARY 1, 2010 - NOVEMBER 30, 2014



* New Jail Opens, MCCF March 2003 = 902

* PTS Average Caseload -Number of Criminal Justice Clients under Pre-Trial Services (ACS, IPSA, PTSU)

◆ PTS Average Caseload ■ DOCR ADP



**DEPARTMENT OF CORRECTION AND REHABILITATION
PRE-TRIAL AVERAGE DAILY CASELOAD*
DETENTION SERVICES AND PRE-RELEASE AVERAGE DAILY POPULATION
JANUARY 2010 - PRESENT**

YEAR 2010

DIVISION	JAN	FEB	MAR	APR	MAY	JUN	JUL	AUG	SEP	OCT	NOV	DEC	10
MCDC	121	112	172	156	161	159	164	146	156	163	144	122	148
PRRS	162	156	154	152	174	186	179	165	160	156	147	145	161
MCCF	743	743	729	752	766	759	744	776	788	801	809	762	764
Average (ADP)	1,026	1,012	1,056	1,060	1,101	1,105	1,086	1,087	1,104	1,121	1,100	1,028	1,074
PTS Average Caseload	2,063	1,900	1,917	2,007	2,159	2,120	2,099	2,196	2,157	2,115	1,951	1,852	2,045

YEAR 2011

DIVISION	JAN	FEB	MAR	APR	MAY	JUN	JUL	AUG	SEP	OCT	NOV	DEC	11
MCDC	125	141	154	151	143	149	144	137	127	137	118	109	136
PRRS	141	147	150	169	170	156	147	152	146	137	125	145	149
MCCF	730	756	763	758	766	759	759	745	736	726	697	629	735
Average (ADP)	997	1,044	1,067	1,079	1,078	1,064	1,049	1,034	1,008	1,000	941	883	1,020
PTS Average Caseload	1,879	1,994	1,998	2,019	2,016	2,013	1,923	1,834	1,796	1,943	1,922	1,880	1,935

YEAR 2012

DIVISION	JAN	FEB	MAR	APR	MAY	JUN	JUL	AUG	SEP	OCT	NOV	DEC	12
MCDC	123	121	111	115	116	125	102	127	107	114	88	92	112
PRRS	143	137	127	110	105	107	121	120	125	138	146	152	128
MCCF	615	632	616	637	632	665	696	706	709	686	691	640	660
Average (ADP)	881	891	854	862	853	897	919	952	941	938	924	884	900
PTS Average Caseload	1,881	1,880	2,041	2,131	2,209	2,095	2,189	2,319	2,253	2,272	2,284	2,206	2,147

YEAR 2013

DIVISION	JAN	FEB	MAR	APR	MAY	JUN	JUL	AUG	SEP	OCT	NOV	DEC	13
MCDC	97	96	85	96	91	88	83	92	89	85	76	71	88
PRRS	137	140	157	153	163	157	149	149	143	148	148	153	150
MCCF	631	637	630	627	612	605	600	602	605	579	572	532	603
Average (ADP)	866	872	873	876	866	850	832	843	837	811	796	756	848
PTS Average Caseload	2,109	2,161	2,047	1,927	1,851	1,812	1,708	1,675	1,679	1,670	1,739	1,734	1,843

YEAR 2014

DIVISION	JAN	FEB	MAR	APR	MAY	JUN	JUL	AUG	SEP	OCT	** NOV	DEC	14
MCDC	81	75	78	83	77	79	73	78	75	71	78		77
PRRS	144	128	127	123	129	143	158	155	147	154	160		143
MCCF	546	559	558	553	578	573	569	594	611	603	561		573
Average (ADP)	771	762	763	759	783	795	801	828	833	827	798		793
PTS Average Caseload	1,749	1,755	1,865	1,822	1,776	1,694	1,629	1,616	1,597	1,576	1,616		1,700

ADP - Average Daily Population (Include Weekenders)

PTS Average Caseload - Number of Criminal Justice Clients under Pre-Trial Services (ACS, IPSA, PTSU)

** November 1, 2014 - November 30, 2014