



**Montgomery County**  
**Department of Correction and Rehabilitation**

# **Pre-Release and Reentry Services Division**

Presented to:

*Updates from Hill, DOJ on Cost Effective Strategies to  
Manage Costs and Improve Public Safety*

**Educational Workshop Block 2**

**NACO 2014 Legislative Conference**

**March 3, 2014**

*Serving Montgomery County for over 40 years*

# 4 “Cs” of the DOCR Mission

Care,  
Custody,  
Control, &  
**Community**

# Mapped Addresses of 2007 Jail Releases and DOCR Correctional Operations

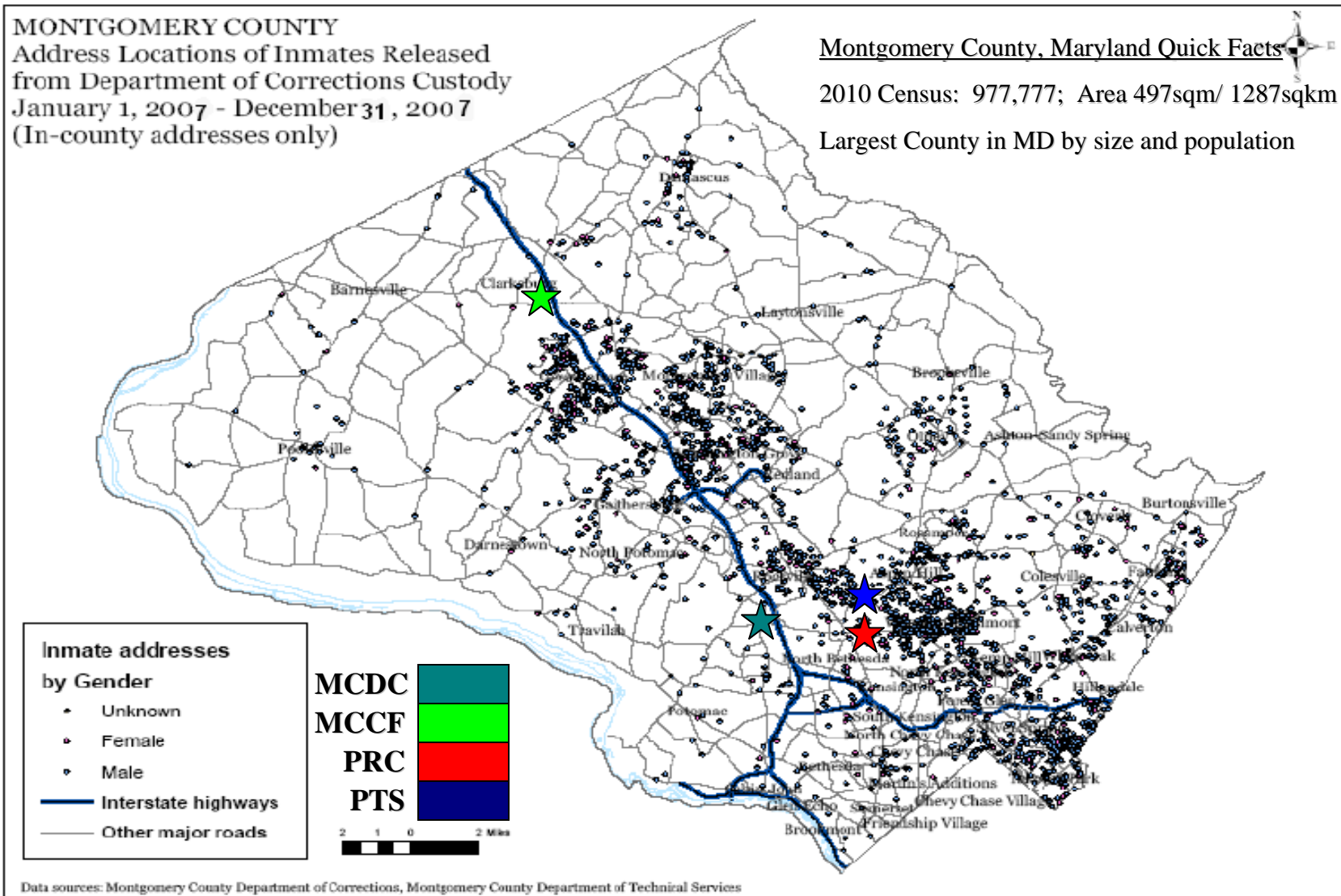
## MONTGOMERY COUNTY

Address Locations of Inmates Released  
from Department of Corrections Custody  
January 1, 2007 - December 31, 2007  
(In-county addresses only)

Montgomery County, Maryland Quick Facts

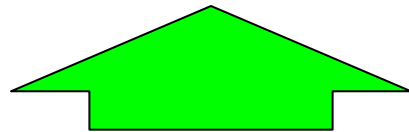
2010 Census: 977,777; Area 497sqm/ 1287sqkm

Largest County in MD by size and population

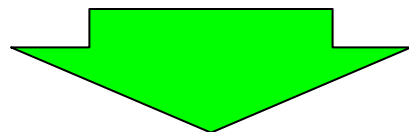


# DOCR Strategic Components

**Pre-Trial Services**  
Intervention Program for Substance Abusers (346)  
Alternative Community Service (1,007)  
Pre-Trial Supervision (482) = 1,835



**Detention Services**  
MCDC (82) / MCCF (635)  
Education/Treatment/Work Programming  
Reentry Services = 717



**Pre-Release Services**  
173-Bed PRC (149)/ Home Confinement Program (9)  
Work Release and Community-Based-Treatment  
Family Engagement = 158

Data from 06/18/2013

# Pre-Release and Re-Entry Services (PRRS)

## 171-bed Pre-Release Center (PRC)

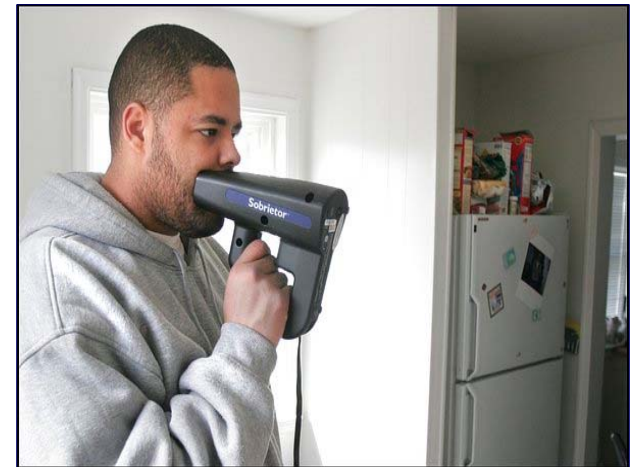
- Accredited Residential Community Correction Work Release facility
- Run by County Corrections
- 1 female & 3 male housing units
- Constructed in 1978
- Rockville, Maryland
- Near Jobs & Transportation



## 45-Client Home Confinement

- Electronic monitoring
- Case management continuity
- Mobile field team

**17,554 served as of 02/12/2014**





# Montgomery County Pre-Release Center



# Pre-Release Center location near Transportation and Jobs



# Eligibility / Screening Process

## Population Served

- Sentenced Jail population
- State prison population
- Federal prison population

## Hard and Fast

- One year or less remaining prior to release
- Voluntary application for program admission
- Ability to work legally (in-house or community-based)
- No serious pending charges or detainers
- No Escape Charges (sole exclusionary offense)
- Judicial consent for placement (PRRS determines eligibility)

## Discretionary

- Can be managed safely in the community
- Will benefit from participation in program



# Work Release

- Expectation of work within 5 weeks of orientation
- Participants find jobs themselves
- One-Week of job readiness training
- Internet-based Career Resource Center (23 work stations)
- Employer aware of offense
- Employer contract
- Work Release Coordinators work with employers to ensure appropriateness of job match



# Services



- **Assessment (LSIR)**
- **Individualized reentry plans**
- **Evidenced-based programs**
- **Family involvement**
- **Community partners**
- **Faith-based mentors**
- **Education**

# Programs

Jail Addiction Services  
(JAS) Aftercare

Morning Meeting

Narcotics Anonymous

Digital Literacy

Alcoholics Anonymous

Family Sponsor Group

**Montgomery College**  
**GED™ Preparation**

*Job Readiness*

Relapse Prevention

Meditation

*What Employers Want*

**Thinking for a Change**

Women's Group

Montgomery County  
Conflict Resolution  
Center

*Interviewing for  
Employment*

HIV/STD 101

Keys to Success on Community Supervision

# Accountability

- Program fees
- Restitution/Child Support
- Victim Rights
- Approved passes
- 3 Drug tests/weekly
- 3 Alcohol test/daily
- On-site verifications for work & treatment
- Caller ID verification
- Electronic monitoring
- Escape prosecution



# **PRRS Fiscal Performance CY 2013 Data**

- \$1,614,642 Earned Gross Income
- \$302,008 Income Taxes returned to the Community
  - Averaging \$25,167/month
- \$285,234 program fees collected
  - Averaging \$23,770/month
- \$1,627,234 Federal Revenue
  - Averaging \$135,603/month



# One/Three Year Recidivism

Release Index	Months/Years of Release	# of Records in Timespan	# of Individuals with >=1 Convictions	Average Days to Charge	Conviction Rates
<b>1 Year</b>		<b>194</b>	<b>21</b>	<b>152</b>	<b>10.8%</b>
	July 2012	24	3	208	12.5%
	August 2012	25	1	105	4.0%
	September 2012	21	4	136	19.0%
	October 2012	31	2	188	6.5%
	November 2012	24	4	110	16.7%
	December 2012	37	2	200	5.4%
	January 2013	32	5	116	15.6%
<b>3 Year</b>		<b>241</b>	<b>70</b>	<b>436</b>	<b>29.0%</b>
	July 2010	37	9	526	24.3%
	August 2010	43	17	440	39.5%
	September 2010	34	9	436	26.5%
	October 2010	42	10	481	23.8%
	November 2010	31	9	323	29.0%
	December 2010	31	10	309	32.3%
	January 2011	23	6	536	26.1%

# Contact Information

**Stefan LoBuglio**  
**Chief, Pre-Release and Reentry Services**

Phone: 240-773-4262

[Stefan.Lobuglio@montgomerycountymd.gov](mailto:Stefan.Lobuglio@montgomerycountymd.gov)

Ben Stevenson  
Deputy Chief, Security and Facility  
Phone: 240-773-4212

[Ben.Stevenson@montgomerycountymd.gov](mailto:Ben.Stevenson@montgomerycountymd.gov)

Shannon Murphy  
Deputy Chief, Programs and Services  
Phone: 240-773-4242

[Shannon.Murphy2@montgomerycountymd.gov](mailto:Shannon.Murphy2@montgomerycountymd.gov)

Tyrone Alexander  
Reentry Services Manager  
Phone: 240-773-4222

[Tyrone.Alexander@montgomerycountymd.gov](mailto:Tyrone.Alexander@montgomerycountymd.gov)

**Montgomery County Department of  
Correction and Rehabilitation Website**  
[www.montgomerycountymd.gov/cor](http://www.montgomerycountymd.gov/cor)