



Montgomery County
Department of Correction and Rehabilitation

Welcome to the
Pre-Release and Reentry Services
Community Corrections Division
2019 Program Overview

Serving Montgomery County for over 40 years

4 “C’s” of the DOCR Mission

Care,
Custody,
Control, &
Community

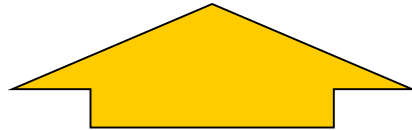
DOCR Strategic Components

Pre-Trial Services

Intervention Program for Substance Abusers (111)
Alternative Community Service (683)
Pre-Trial Supervision (644)

=

1,438

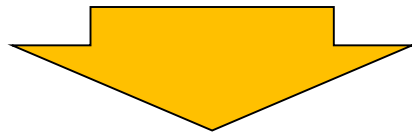


Detention Services

MCDC (50) / MCCF (536)
Education/Treatment/Work Programming
Reentry Services

=

586



Pre-Release Services

144-Bed PRC (106)/ Home Confinement Program (1)
Work Release and Community-Based-Treatment
Family Engagement

=

107

Data from 2/11/2020

Montgomery County Pre-Release Center



Pre-Release Center location near Transportation and Jobs



Eligibility / Screening Process

Acceptance and Placement Process

- One year or less remaining prior to release
- Voluntary application for program admission
- Ability to work legally (in-house or community-based)
- No serious pending charges or detainers
- No recent Escape Charges
- Judicial consent for placement (PRRS determines eligibility)

Discretionary

- Can be managed safely in the community
- Will benefit from participation in program

Results: >95% of those screened are approved for admission

Pre-Release and Re-Entry Services (PRRS)

144-bed Pre-Release Center (PRC)

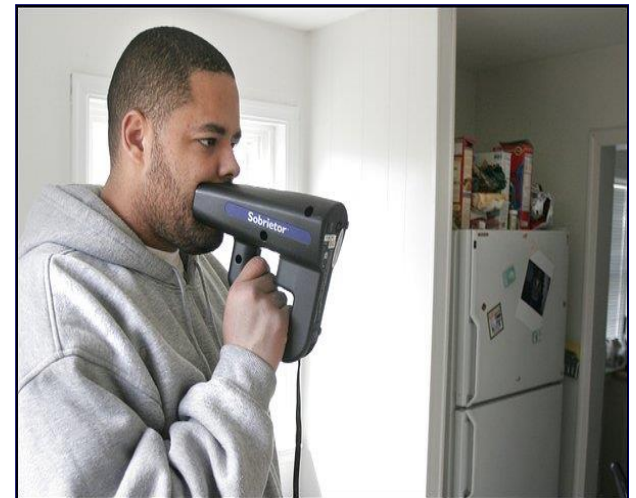
- Accredited Residential Community Correction Work Release facility
- Run by County Corrections
- 1 female & 3 male housing units
- Constructed in 1978
- Rockville, Maryland
- Near Jobs & Transportation



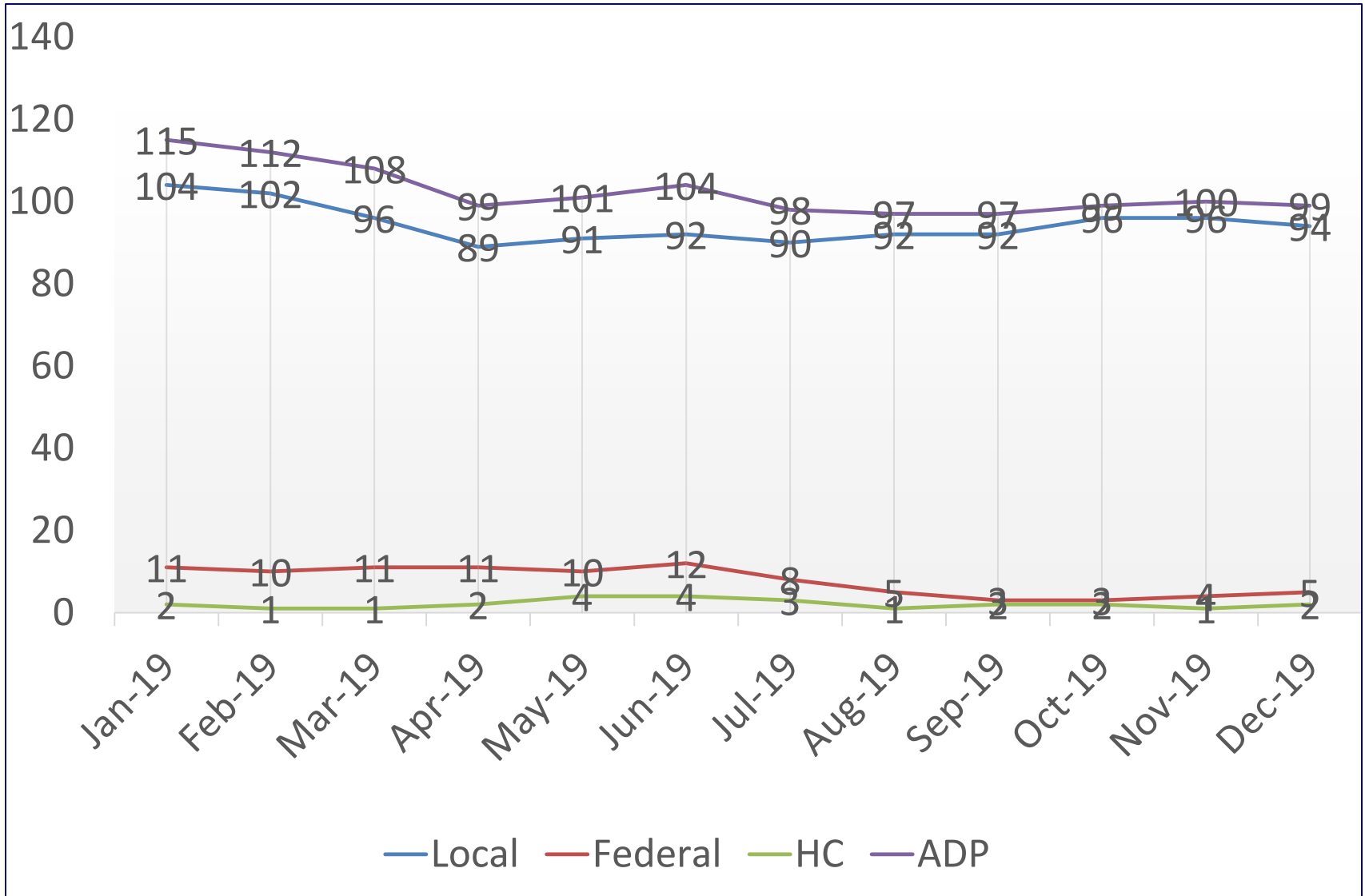
Home Confinement Placement

- Electronic monitoring
- Case management continuity
- Mobile field team

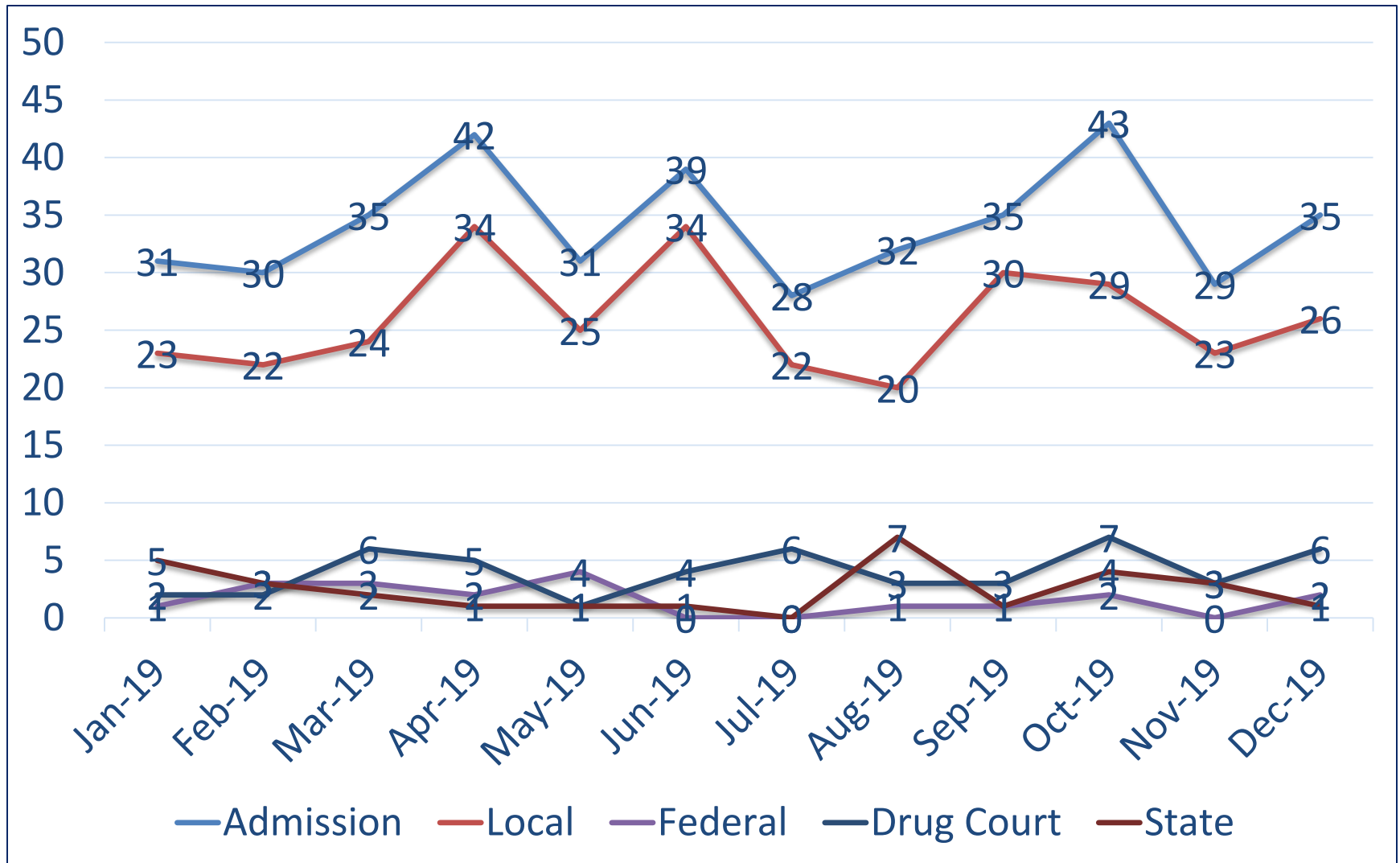
20,0010 served as of 2/11/2020



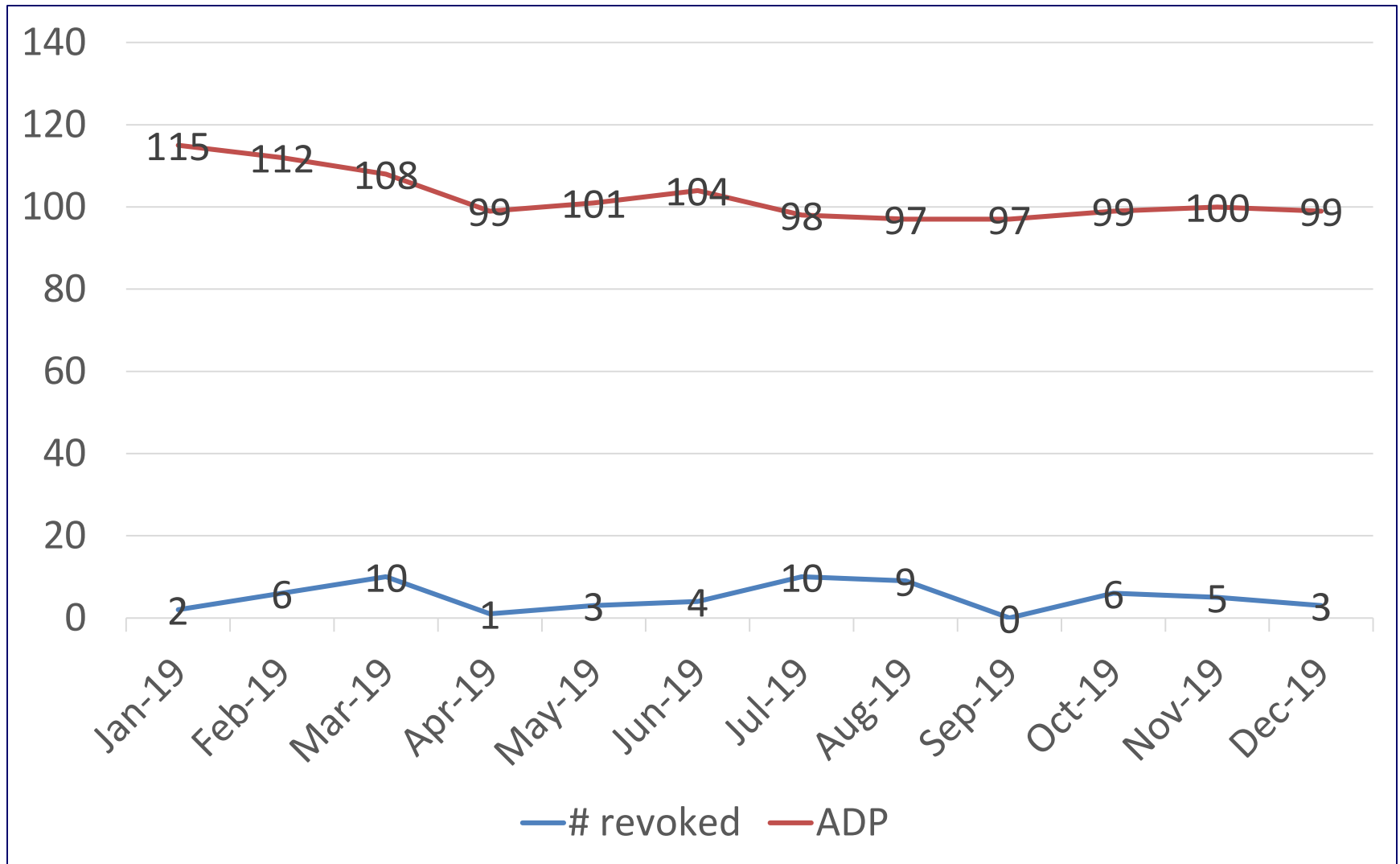
Average Daily Population: CY19



Admissions by Jurisdiction: CY19



Revocations CY2019



Budget and Staffing

https://www.montgomerycountymd.gov/COUNCIL/budget_summary/index.html

- **Budget**
 - \$6,435,551 Million (FY'19)
 - 56.18 FTE's

- **Staffing**
 - 4 Managers/Supervisors
 - 2 Reentry Assessment Specialists (Screeners/Adjustment)
 - 3 Work Release Coordinators
 - 6 CS III Case Managers
 - 7 Resident Supervisor III
 - 22 Resident Supervisors
 - 2 Auditors/Fiscal Assistants
 - 4 Correctional Dietary Officer Staff (1 Assistant Food Manager)
 - 1 Nurse and 1 PT Nurse Practitioner/Physician/Psychiatrist
 - 2 Principal Administrative Aides
 - 6 Community Correction Intern positions

Resident Population Admissions (n=353): CY19

- Local 76%
 - Federal 5%
 - Drug Court 11%
 - State 7%
-

■ Gender:

- 92% Male
- 8% Female

■ Age:

- 34 Average Age
- 33 years male
- 33 years female
- Range: 18-75 years of age
 - 29% age 18-25
 - 73% age 18-40
 - 25% < 40

■ Race/Ethnicity:

- 58% Black
- 20% White
- 19% Hispanic
- 3% Asian/Islander
- 1<% Other

■ Education:

- 26% High School Diploma
- 17% GED
- 31% Some or College Degree
- 26% < 12th Grade

Community-Based Strategies to Address Behavioral Health (MH and SA) Issues

1. Jail Diversion – Front and Back End Diversions
2. Screening for MH and SA Conditions
3. Jail-based Programming and Medical Services
4. Community-Based Correctional Programming
5. Key Community Partnerships
 - County Health and Human Services
 - Montgomery County Drug Court

Programs

Jail Addiction Services
(JAS) Aftercare

Morning Meeting

Narcotics Anonymous

Digital Literacy

Alcoholics Anonymous

Family Sponsor Group

Montgomery College

Job Readiness

Relapse Prevention

GEDTM Preparation

Meditation

What Employers Want

Thinking for a Change

Parenting

Montgomery County
Conflict Resolution
Center

*Interviewing for
Employment*

HIV/STD 101

Keys to Success on Community Supervision

Welcome Home Program Mentoring

In 2013, Prison Outreach Ministry (POM), Inc. (501(c)3 nonprofit) merged with Catholic Charities of the Archdiocese of Washington

- POM has been providing services to the incarcerated since 1984. Initially provided toiletries and other necessities to inmates in the DC jail.
- After witnessing the high rate of recidivism, POM broadened its focus and launched its *Welcome Home Program* in February 2006, in DC. The program grew to include MC in December of 2006; and PG in early 2008.

Accountability

- Program fees
- Restitution/Child Support
- Victim Rights
- Approved passes
- 3 Drug tests/weekly
- 3 Alcohol test/daily
- On-site verifications for work & treatment
- Caller ID verification
- Electronic monitoring
- Escape prosecution

•ET1 GPS



• Alcohol Monitoring Bracelet



Incentivizing Reentry Planning

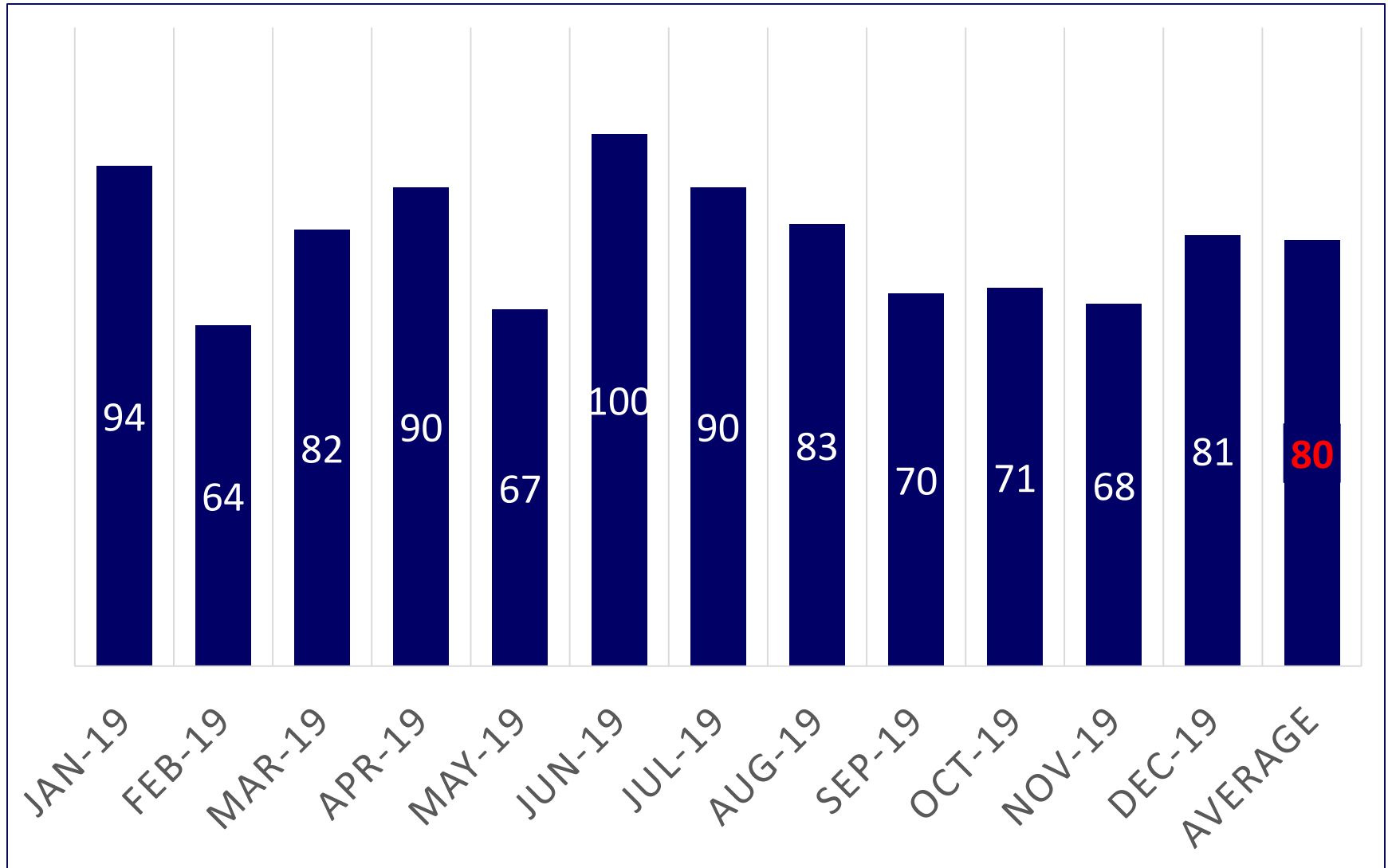
- Four levels of increasing privileges
- Privileges include extended curfew and increased community/home passes
- Family members required to participate in programming to receive home passes
- Level movement dependent on completing specific reentry objectives
- Securing work and obtaining personal identification materials required to move from Level 1 to Level 2
- Home Confinement Goal at Level 3
- No minimum time required at any level

Work Release

- Expectation of work within 5 weeks from admission
- Participants find jobs themselves
- One-Week of job readiness training
- Internet-based Career Resource Center (23 work stations)
- Employer aware of offense
- Employer contract
- Work Release Coordinators work with employers to ensure appropriateness of job match



CY18 Employment at the Time of Release



Performance Data—CY2019

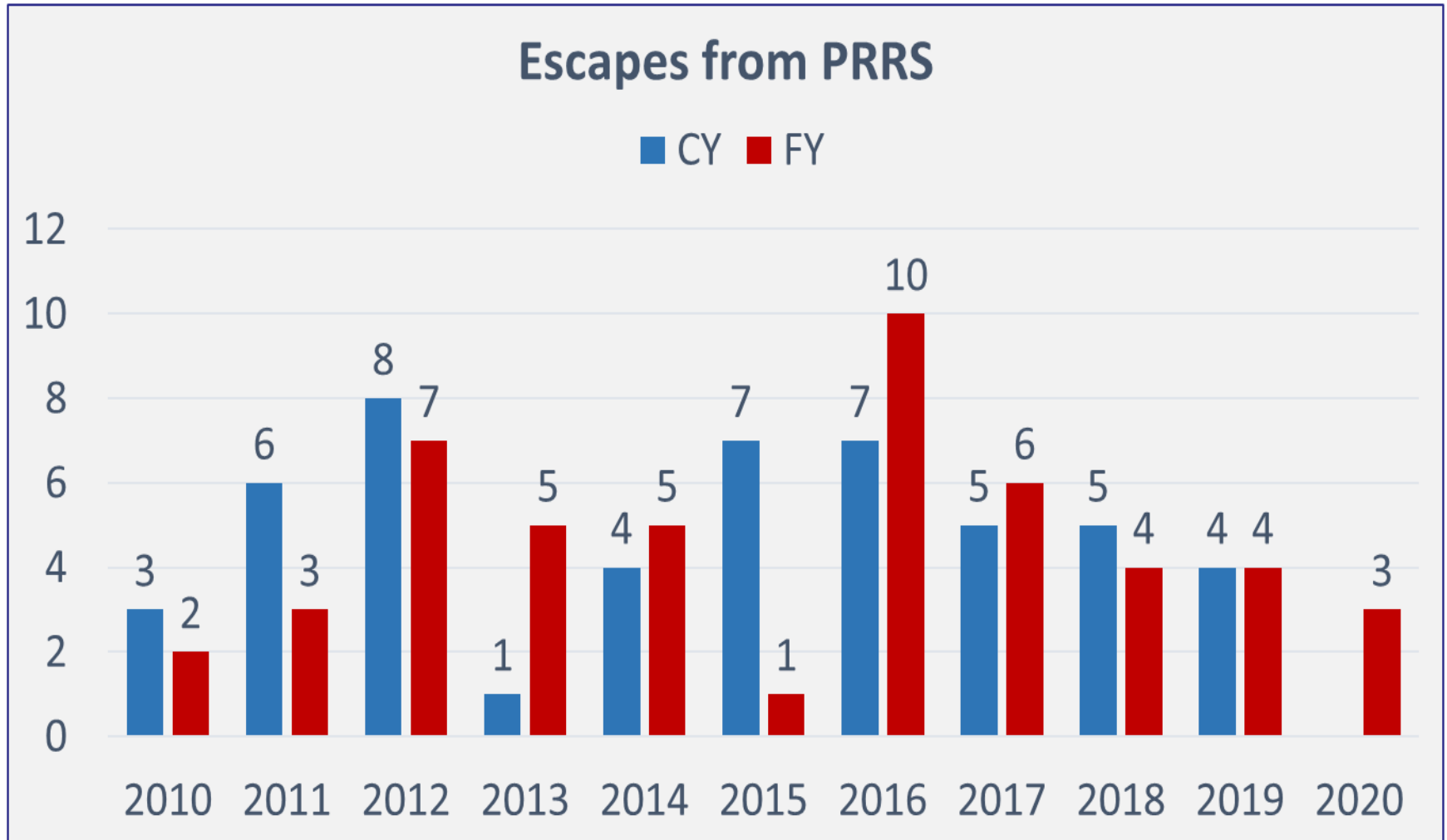
Programmatic

- 80% estimated program completion
- 75% estimated released with private sector employment
- 98% estimated released with housing plan

Fiscal (FY18)

- \$1,406,140 Earned Gross Income
- \$267,466 Income Taxes
- \$266,652 Program fees paid to Montgomery County
- \$359,238 Federal Revenue to Montgomery County
- \$130,642 Family Support
- \$4,293 Restitution

Escape Data



**Last escape occurred on December 3, 2019

Volunteers and Interns: PRRS

More than 45 Volunteers, paid Community Correctional Interns and Academic Interns play integral roles in facilitating, supporting and educating residents in a variety of programs:

- ✓ Career Resource Center Assistance
- ✓ Employment Readiness, Mock Interviewing
- ✓ Museum Education Program
- ✓ Meditation
- ✓ Alcoholics and Narcotics Anonymous
- ✓ Relapse Prevention

Materials

Resident Orientation Handbook

<http://www.montgomerycountymd.gov/COR/Resources/Files/PRCGuidebook.pdf>.

Contact Information

Angela Talley
Director, DOCR
Pre-Trial and Pre-Release and Reentry Services
Phone: 240-773-9747
Angela.Talley@montgomerycountymd.gov

Ivan Downing
Deputy Chief, Security and Facility
Phone: 240-773-4212
Ivan.Downing@montgomerycountymd.gov

Ben Stevenson
Acting Chief, Community Corrections Division
Deputy Chief, Programs and Services
Phone: 240-773-4262
Ben.Stevenson@montgomerycountymd.gov

Tyrone Alexander
Reentry Services Manager
Phone: 240-773-4222
Tyrone.Alexander@montgomerycountymd.gov

**Montgomery County Department of Correction and
Rehabilitation Website**
www.montgomerycountymd.gov/cor