


**MEMORANDUM**

April 11, 2012

TO: Planning, Housing, and Economic Development Committee  
Public Safety Committee

FROM: Linda McMillan, Senior Legislative Analyst 

SUBJECT: **FY13 Operating Budget: M-NCPPC Park Police**

***Expected for this worksession:***

Francoise Carrier, Chair, Montgomery County Planning Board  
Mary Bradford, Director, M-NCPPC Parks Department  
Chief Darien Manley, M-NCPPC Park Police  
John Hench, M-NCPPC Parks Department  
Rob Gibbs, M-NCPPC Parks Department

**Overview**

The FY13, the M-NCPPC request for Park Police is \$12,765,500 and 109.4 workyears (budget excerpt © 1-2.) One new full-time Park Police Officer position is requested in response to new park facilities that have come on-line or will come on-line in FY13. The main increase is a reduction of 4.5WYs of required lapse. Park Police will be required to achieve 8.6WYs of lapse in FY13 (instead of the 12.1WYs in FY12.)

<b>M-NCPPC Park Police</b>						
<b>in \$000s</b>	<b>FY09</b>	<b>FY10</b>	<b>FY11</b>	<b>FY12</b>	<b>FY13</b>	<b>%Change</b>
	<b>Actual</b>	<b>Actual</b>	<b>Actual</b>	<b>Budget</b>	<b>Budget</b>	<b>FY12-13</b>
Personnel	10,393	11,020	9,368	10,658	12,061	13.2%
Operating	1305	717	815	687	705	2.6%
Capital	135	-	87	-	-	na
(other)						
<b>TOTAL</b>	<b>11,833</b>	<b>11,737</b>	<b>10,270</b>	<b>11,345</b>	<b>12,766</b>	<b>12.5%</b>
Workyears	114.7	115.6	107.3	104.9	109.4	4.3%

## Crime Statistics/Crime Prevention Standards

The annual crime statistic report for Park Police is attached at © 4-5 and the Crime Prevention Standards reported in the M-NCPPC budget document are attached at © 3. In 2011, Part 1 Crimes were down -4.6% from 2010 and Part 2 Crimes were down by -4.4% for an overall reduction of -4.4%. In terms of Part 1 Crimes, many of the actual numbers of offenses are relatively small and so large percentage changes can occur from small number changes. It is notable that no rapes were reported in the Parks in 2011 and that robberies were less than ½ of those reported in 2010. The most reported Part 1 Crime is theft. In terms of Part 2 Crimes, there were increases in vandalism, drug law violations, and littering/dumping.

<b>MNCPPC Park Police</b>	<b>2007</b>	<b>2008</b>	<b>2009</b>	<b>2010</b>	<b>2011</b>	<b>% change 2010-11</b>
<b>Part 1 Offenses:</b>						
Murder	6	1	0	0	0	0.0%
Rape	0	2	1	2	0	-100.0%
Robbery	8	13	16	15	6	-60.0%
1st Degree Assault	5	6	4	2	3	50.0%
Burglary	13	15	24	9	19	111.1%
Thefts	183	208	179	164	154	-6.1%
Auto Thefts	8	8	3	3	4	33.3%
<b>TOTAL PART 1</b>	<b>223</b>	<b>253</b>	<b>227</b>	<b>195</b>	<b>186</b>	<b>-4.6%</b>
<b>Part 2 Offenses:</b>						
Destruction/Vandalism	290	239	227	174	206	18.4%
Sex Offense	20	19	7	8	7	-12.5%
Narcotic Drug Law	104	209	245	199	220	10.6%
Littering/Dumping	39	42	64	56	68	21.4%
2nd Degree Assault	25	62	48	51	23	-54.9%
Other Part 2	139	265	274	292	222	-24.0%
<b>TOTAL PART 2**</b>	<b>617</b>	<b>836</b>	<b>865</b>	<b>780</b>	<b>746</b>	<b>-4.4%</b>
<b>TOTAL OFFENSES</b>	<b>840</b>	<b>1089</b>	<b>1092</b>	<b>975</b>	<b>932</b>	<b>-4.4%</b>
<b>Physical Arrests:</b>						
Adult Arrests	141	244	262	172	171	-0.6%
Juvenile Arrest	46	76	94	62	61	-1.6%
<b>Arrest by Citation/Warrant:</b>						
Adult	144	275	358	346	285	-17.6%
Juvenile	163	270	284	185	182	-1.6%
Outstanding Warrant	148	176	198	149	85	-43.0%
<b>TOTAL ARRESTS</b>	<b>642</b>	<b>1041</b>	<b>1196</b>	<b>914</b>	<b>784</b>	<b>-14.2%</b>
<b>Total Civil/Traffic/State Citations</b>	<b>7969</b>	<b>12856</b>	<b>12839</b>	<b>10910</b>	<b>14750</b>	<b>35.2%</b>

## **Park Police Staffing**

<b>MNCPPC Park Police</b>	<b>Proposed FY13</b>	<b>Current Vacancies</b>
<b>SWORN:</b>		
Chief	1	0
Captain	2	1
Lieutenant	7	1
Sergeant	12	2
Police Officers	71	15
<b>Subtotal Sworn</b>	<b>93</b>	<b>19</b>
Non-Sworn	21	5
<b>TOTAL</b>	<b>114</b>	<b>24</b>
Proposed Lapse	8.6	
Captain and Sergeants to be filled April 2012		
6 Police Officer Positions to be filled before June 30, 2012		
FY13 would start with 1 vacant Lieutenant and 10 vacant Police Officers		

**Council staff recommends approval of the FY13 complement as proposed by Park and Planning.** This will add one new Police Officer position. However, positions do not have an impact if they are not filled. As can be seen from the table above, currently 20% of the sworn complement is vacant. If recruitment is made as expected on July 1, 2012 (FY13) there will still be 11 sworn vacancies, or about 12% of the sworn complement. The Park Police will be able to fill several other positions (sworn and non-sworn) but will need to have almost 9 positions vacant throughout the year to meet lapse. This is about 8% of the total complement (sworn and non-sworn.)

## **Deer Management**

Park and Planning undertakes deer management in county parks; it is a function of both Park Stewardship and Park Police. Park and Planning uses both managed hunts (non-police) and sharpshooting (Park Police) when hunting is used to reduce the deer population. Managed hunts are appropriate on larger properties in the upcounty area. Sharpshooting is used in areas that are near more densely populated areas. In addition, Park and Planning convenes and staffs the Deer Management Work Group. The DMWG membership includes the Maryland Department of Natural Resources, Montgomery Soil Conservation District, Montgomery County Government (Police and Economic Development), the National Park Service, and Washington Suburban Sanitary Commission.

On January 26, 2012 the Public Safety Committee met to discuss the FY 2012 Annual Report and Recommendations of the DMWG, received an update on Park's deer management efforts including the new effort in Sligo Creek Park, discussed the need for a deer management plan for the C&O Canal with representatives from the National Park Service, and heard from residents about deer overpopulation in their neighborhoods. A letter to the National Park Service sent by the Council President as follow-up to the meeting is attached at © 6-7.

A part of the January 26<sup>th</sup> discussion was the use of bow hunting in downcounty neighborhoods as a way to reduce the deer population. Council staff wants to clarify that, while Parks staff will help residents connect with bow hunters, the Parks Department does not itself use bow hunting and the Parks Department does not hunt on private property. The parameters for bow hunting are regulated by the State of Maryland. If a resident can meet the requirements, including a safety zone of 150 yards, bow hunting can occur in a residential neighborhood. Some residents have requested that the safety zone be reduced to 50 yards. The General Assembly would have to make such a change.

**Council staff requested information from Park Police on the cost of expanding the Park Police sharpshooting effort to three additional sites.** The information is attached at © 8. In summary the 3 sites and costs would be:

Sligo Golf Course, areas #4 and #5	\$ 6,799
Rock Creek Stream Valley #2	\$ 6,799
Paint Branch Stream Valley #5 and #6	\$13,357
<b>TOTAL</b>	<b>\$26,955</b>

Council staff believes that deer overpopulation is a serious safety, health, and economic problem and that additional resources should be approved. The PS Committee has previously reviewed information that deer-vehicle collisions were reduced near downcounty parkland where sharpshooting efforts were undertaken.

**Council staff recommends the Council add \$26,955 to the reconciliation list to address the next three priority sites.**

## PARK POLICE

Summary of Annual Comparisons by Major Object	Actual FY10		Actual FY11		Budget FY12		Budget FY13	
Personnel Services	\$11,020,418		\$9,367,958		\$10,658,100		\$12,061,000	
Supplies & Materials	\$401,057		\$537,539		\$408,500		\$408,500	
Other Services & Charges	\$316,327		\$277,264		\$277,600		\$296,000	
Capital Outlay	\$0		\$87,304		\$0		\$0	
Sub Total	\$11,737,802		\$10,270,065		\$11,344,200		\$12,765,500	
Chargebacks	\$0		\$0		\$0		\$0	
Total	\$11,737,802		\$10,270,065		\$11,344,200		\$12,765,500	
Positions/Workyears Full Time Career	122.00	120.11	114.00	114.00	113.00	113.00	114.00	114.00
Positions/Workyears Part-Time Career	0.00	0.00	0.00	0.00	0.00	0.00	0.00	0.00
Positions/Workyears Total Career	122.00	120.11	114.00	114.00	113.00	113.00	114.00	114.00
Positions/Workyears Term Contract	0.00	0.00	0.00	0.00	0.00	0.00		0.00
Seasonal/Intermittent		4.50		0.00		4.00		4.00
Chargebacks		0.00		0.00		0.00		0.00
Less Normal Lapse		(9.05)		(6.70)		(12.10)		(8.60)
Workyears Total		115.56		107.30		104.90		109.40

## DIVISION GOAL

To provide public safety services to protect the properties, resources, citizens and visitors within the Montgomery County park system.

## DIVISION OVERVIEW

The Division is committed to providing professional public safety services with a focus on crime prevention and detection through statistical analysis of citizen based calls for service and officer observations to ensure a safe park system.

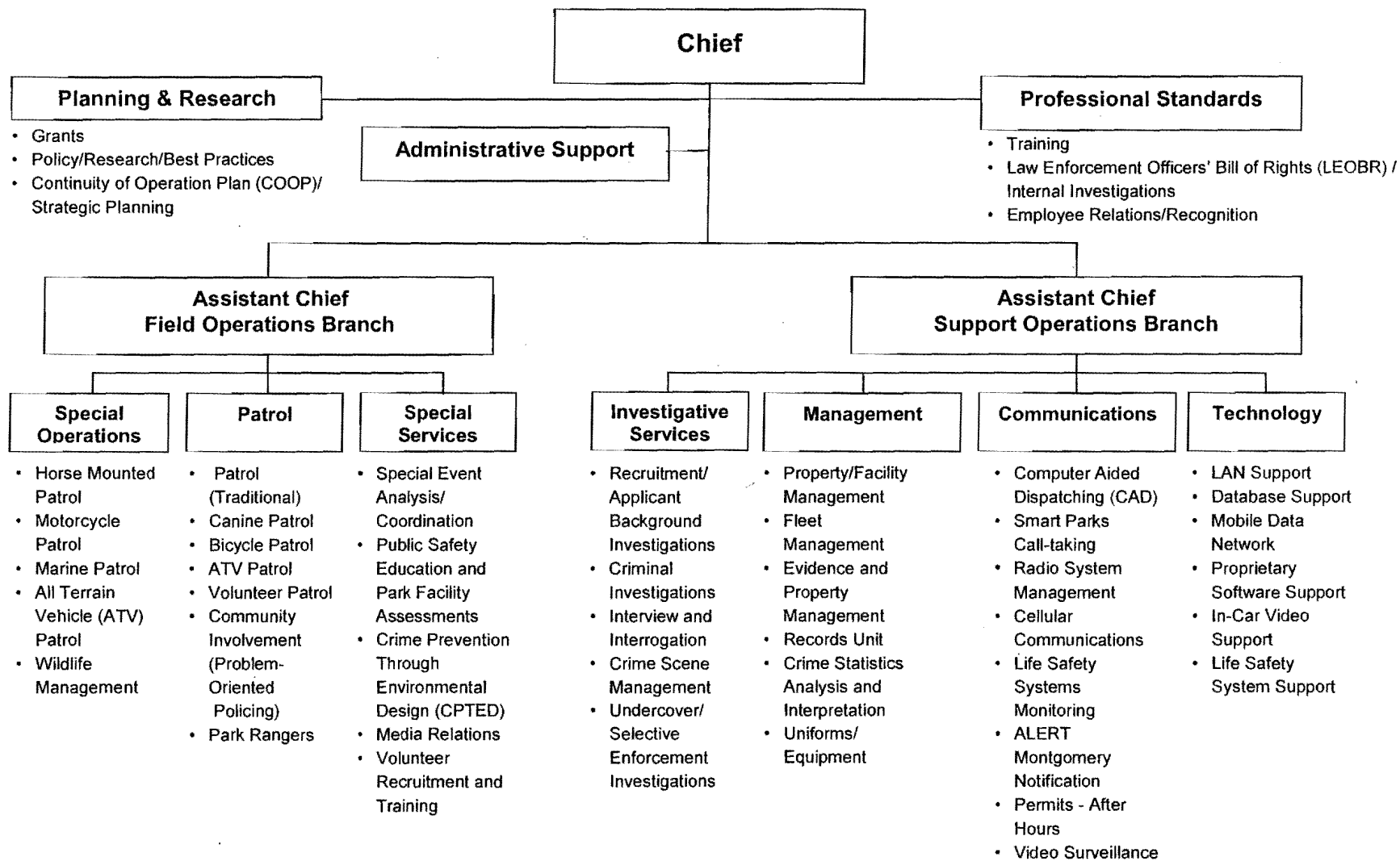
The Park Police Division is divided into two operational branches and an Administrative Section. The operational components are the **Field Operations** branch comprised of Patrol Services, Special Services and Special Operations and the **Support Operations** branch comprised of Investigative Services, Management Services, Communications and Technical Services. The **Administrative Section** includes the Office of the Division Chief, Professional Standards, and Research and Planning sections.

The park land is diverse in its terrain; therefore, the use of bicycle, ATV, marine, K-9, motorcycle and horse-mounted officers demonstrate the unique resources the Park Police deploy to ensure that all areas of the park system are patrolled. The Division's personnel compliment is augmented by approximately 37 volunteers.

## FY13 MAJOR CHANGES

- OBI includes \$50,600 in Personnel for one new sworn full-time career position and 1.0 WY and \$18,400 in Other Services.
- FY13 Lapse WYs decreased in accordance with the redistribution of the Departmental lapse between the divisions.

# PARK POLICE



## MAINTENANCE STANDARDS – MONTGOMERY PARKS (Cont'd)

STATEMENT OF STANDARD/ Maintenance Activity	Optimal Frequency Standard	FY10 Actual	FY11 Actual	FY12 Estimated	FY13 Proposed
<b>CRIME PREVENTION STANDARDS</b>					
<b>VOLUNTEER PROGRAM</b>					
Keeping a trained corps of volunteers to work traffic, parking, special events, community outreach and to serve as additional eyes and ears on the parks.					
Volunteer service hours	5,000	3,300	3,600	4,200	4,000
Volunteers providing service	50	33	36	42	40
<b>PARK WATCH</b>					
Public crime prevention program taught to employees, park visitors and community groups.					
PowerPoint and practical training.	12 new groups annually	12	10	10	12
<b>CRIME PREVENTION THROUGH ENVIRONMENTAL DESIGN (CPTED) STUDIES</b>					
Studies conducted of specific facilities on M-NCPPC property to improve security and safety, as well as address community concerns.					
Systematic study of each facility on Park Property once every ten years.	8 per year	7	1	1	1
<b>PLANNING, DEVELOPMENT, CONSTRUCTION AND OBSERVATION (PDCO)</b>					
Crime Prevention through Environmental Design practices are recommended in the planning stages of all park development projects assigned a PDCO team.					
<b>Plan Review:</b> CPTED trained staff will attend and assist with public meetings on park projects as needed.	100% of projects	80% of projects	70% of projects	70% of projects	60% of projects
<b>Plan Development:</b> CPTED trained staff will attend and give input at PDCO team meetings.	100% of projects	100% of projects	100% of projects	100% of projects	100% of projects
<b>CRIME PREVENTION OUTREACH AT COMMUNITY EVENTS</b>					
Provide outreach at community events such as National Night Out, community festivals and organized group meetings.					
National Night Out (average 18 requests per year)	100% of requests	90%	80%	80%	60%
Community Festivals and Celebrations (average 60 requests per year)	100% of requests	90%	75%	75%	70%
Organized Youth Meetings – Scouts, Day Camps, etc. (average 40 requests per year)	100% of requests	90%	75%	75%	90%

**MARYLAND-NATIONAL CAPITAL PARK POLICE  
MONTGOMERY COUNTY DIVISION  
CRIME YEAR-TO-DATE  
JANUARY THROUGH DECEMBER 2011**

<b>PART 1 OFFENSES</b>					
<b>CRIME</b>	<b>1ST QUARTER</b>	<b>2ND QUARTER</b>	<b>3RD QUARTER</b>	<b>4TH QUARTER</b>	<b>TOTAL</b>
MURDER	0	0	0	0	0
RAPE	0	0	0	0	0
ROBBERY	2	4	0	0	6
1ST DEGREE ASSAULT	0	0	0	3	3
Gun	0	0	0	1	1
Knife	0	0	0	0	0
Other	0	0	0	2	2
BURGLARY	4	7	6	2	19
Force	2	7	5	1	15
No Force	2	0	1	0	3
Attempt	0	0	0	1	1
THEFT	25	55	37	37	154
AUTO THEFT	1	1	0	2	4
<b>PART I TOTALS</b>	<b>32</b>	<b>67</b>	<b>43</b>	<b>44</b>	<b>186</b>

<b>PART II OFFENSES</b>					
<b>OFFENSE</b>	<b>1ST QUARTER</b>	<b>2ND QUARTER</b>	<b>3RD QUARTER</b>	<b>4TH QUARTER</b>	<b>TOTAL</b>
DESTRUCTION	44	75	45	42	206
Vandalism	13	27	16	9	65
Hate/Violence	0	1	2	2	5
Graffiti	31	47	27	31	136
SEX OFFENSES	1	3	2	1	7
NARCOTIC DRUG LAWS	43	79	54	44	220
LITTERING/DUMPING	18	13	19	18	68
2ND DEGREE ASSAULT	4	10	5	4	23
OTHER PART II	72	70	45	35	222
<b>PART II TOTALS</b>	<b>182</b>	<b>250</b>	<b>170</b>	<b>144</b>	<b>746</b>
<b>TOTAL OFFENSES</b>	<b>214</b>	<b>317</b>	<b>213</b>	<b>188</b>	<b>932</b>



**CRIME YEAR-TO-DATE  
JANUARY THROUGH DECEMBER 2011  
CONTINUED**

ARRESTS	1ST QUARTER	2ND QUARTER	3RD QUARTER	4TH QUARTER	TOTAL
ADULT PHYSICAL	55	38	34	44	171
JUVENILE PHYSICAL	5	22	22	12	61
ADULT CRIMINAL CIT.	52	111	66	56	285
JUV. CRIMINAL CIT.	30	56	40	56	182
WARRANT ARRESTS	42	15	13	15	85
<b>TOTAL ARRESTS</b>	<b>184</b>	<b>242</b>	<b>175</b>	<b>183</b>	<b>784</b>

CITATIONS	1ST QUARTER	2ND QUARTER	3RD QUARTER	4TH QUARTER	TOTAL
CIVIL	131	351	313	201	996
CIVIL WARNINGS	327	432	496	437	1,692
PARKING	151	317	286	133	887
STATE	1078	1412	1389	1193	5,072
STATE WARNINGS	621	617	1937	2037	5,212
DNR	3	20	21	4	48
SERO	157	120	121	176	574
FIELD CONTACTS	92	80	44	53	269
<b>TOTAL CITATIONS</b>	<b>2,560</b>	<b>3,349</b>	<b>4,607</b>	<b>4234</b>	<b>14,750</b>

ACCIDENTS	1ST QUARTER	2ND QUARTER	3RD QUARTER	4TH QUARTER	TOTAL
FATAL	0	0	0	0	0
INJURY	0	10	2	6	18
PROPERTY DAMAGE	17	19	16	13	65
HIT AND RUN	2	1	2	1	6
<b>TOTAL ACCIDENTS</b>	<b>19</b>	<b>30</b>	<b>20</b>	<b>20</b>	<b>89</b>

POLICE ACTIVITIES	1ST QUARTER	2ND QUARTER	3RD QUARTER	4TH QUARTER	TOTAL
Self-Initiated Calls	19,094	19,498	20,267	17,830	76,689
Total Calls for Service	20,264	21,245	21,877	18,942	82,333
<b>REPORTS WRITTEN</b>	<b>412</b>	<b>543</b>	<b>399</b>	<b>376</b>	<b>1,730</b>



MONTGOMERY COUNTY COUNCIL  
ROCKVILLE, MARYLAND

OFFICE OF THE COUNCIL PRESIDENT

February 29, 2012

Kevin Brandt  
Superintendent, C&O Canal National Historical Park  
1850 Dual Highway – Suite 100  
Hagerstown, MD 21740

Superintendent Brandt,

Montgomery County has a serious and growing deer over-population problem. The County Council's Public Safety Committee (PS Committee) annually reviews the County's deer management plan and the results of efforts the County has undertaken that include managed hunts and police sharpshooting on County parkland. On January 26<sup>th</sup>, the PS Committee discussed deer management with representatives from Park and Planning, the County's agricultural services program, and residents who are extremely concerned about increased damage to plants and trees, deer-vehicle collisions, and Lyme disease. Brian Carlstrom, Deputy Superintendent of the C&O Canal National Historic Park (NHP), attended this meeting and we greatly appreciate the National Park Services' participation in this discussion.

Deputy Superintendent Carlstrom may have relayed to you that the Council has received many complaints from people living in Potomac adjacent to the Gold Mine Tract of the C&O Canal National Historical Park about the negative impacts from too many deer. Over the past ten years, these residents have expressed concern about the number of deer in the area. Records on deer-vehicle collisions show a consistently high number of deer related accidents in the general area. National Park Service deer population data for the Gold Mine Tract for 2010 estimates a population density of about 128 deer per square mile. In addition to causing concern to local residents, a population this high is surely having a negative impact on the vegetation in the park. Our residents are willing to do what they can and several in the area have contacted bow-hunters to see if deer can be legally harvested on their properties.

The PS Committee members were very interested in understanding how the National Park Service will address this problem. Deputy Superintendent Carlstrom explained to the Committee and others present the process involved for a National Park to implement deer management. He stressed the cost and time required to complete a Deer Management Plan and the associated Environmental Impact Statement (EIS). We understand that Rock Creek Park in the District of Columbia has been working on this process for a number of years and is just finishing up the final Plan. We also understand that National Park Service staff from around the country, recognizing a growing need to manage ungulates on NPS lands, are meeting to discuss ways to streamline the process.

STELLA B. WERNER COUNCIL OFFICE BUILDING • 100 MARYLAND AVENUE • ROCKVILLE, MARYLAND 20850  
240/777-7900 • TTY 240/777-7914 • FAX 240/777-7989  
WWW.MONTGOMERYCOUNTYMD.GOV

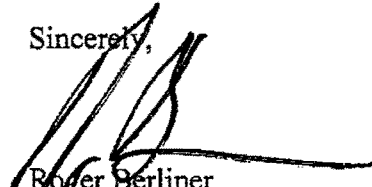
Superintendent Brandt  
February 29, 2012  
Page 2

We must work together to find ways to manage the deer population along the C&O Canal and its neighboring communities. The Gold Mine Tract represents, by far, the largest refuge in the area. We are formally requesting the C&O Canal Historical Park initiate the EIS process and develop a White-tailed Deer Management Plan for the Gold Mine Tract to reduce the deer population as soon as possible. We recognize that deer management on National Park Service parkland must strike a balance in your mission to protect and preserve this historic gem. However, the damage is already significant and getting worse. A solution needs to be developed now.

Thank you again for sending Deputy Secretary Carlstrom to meet with the Council's PS Committee. Please contact me (240-777-7828) or Councilmember Phil Andrews, Chair of the PS Committee (240-777-7906), if you would like to discuss this request further.

We look forward to your reply.

Sincerely,



Roger Berliner  
Council President

C: Councilmembers  
Congressman Van Hollen  
County Executive Isiah Leggett  
Francoise Carrier, Chair, Montgomery County Park and Planning Commission

The following three sites (Sligo Golf Course and stream valleys #3 and #4, Rock Stream Valley #2 and Paint Branch Stream Valley #4 and 5) were recommend by the MNCPPC Natural Resources Division as the best sites in the down county area with the current 150 yard rule in place. Below is a cost analysis for Park Police resources to conduct the three details:

Site Cost Analysis:

**Sligo Golf Course, areas #4 and #5**

The estimated time to complete the detail in this area would be two (2) ten (10) hour operational days

Pre Detail outreach (signage, community outreach, etc..)

- Two (2) rangers- ten (10) hours community outreach

Overtime to back cover normal operations for officers working the detail:

- Six (6) officers at an overtime rate for 20 hours

Officers need to secure the site during the shooting period:

- Four (4) officers at an overtime rate for 20 hours

Total Estimated cost- \$6,799

**Rock Creek Stream Valley #2**

The estimated time to complete the detail in this area would be two (2) ten (10) hour operational days

Pre Detail outreach (signage, community outreach, etc..)

- Two (2) rangers- ten (10) hours community

Overtime to back cover normal operations for officers working the detail:

- Six (6) officers at an overtime rate for 20 hours

Officers need to secure the site during the shooting period:

- Four (4) officers at an overtime rate for 20 hours

Total Estimated cost- \$6,799

**Paint Branch Steam Valley #5 and #6**

The estimated time to complete the detail in this area would be four (4) ten (10) hour operational days.

Pre Detail outreach (signage, community outreach, etc..)

- Two (2) rangers- ten (10) hours community

Overtime to back cover normal operations for officers working the detail:

- Six (6) officers at an overtime rate for 40 hours

Officers need to secure the site during the shooting period:

- Four (4) officers at an overtime rate for 40 hours

Total Estimated cost- \$13,357

Grand Total \$26,955