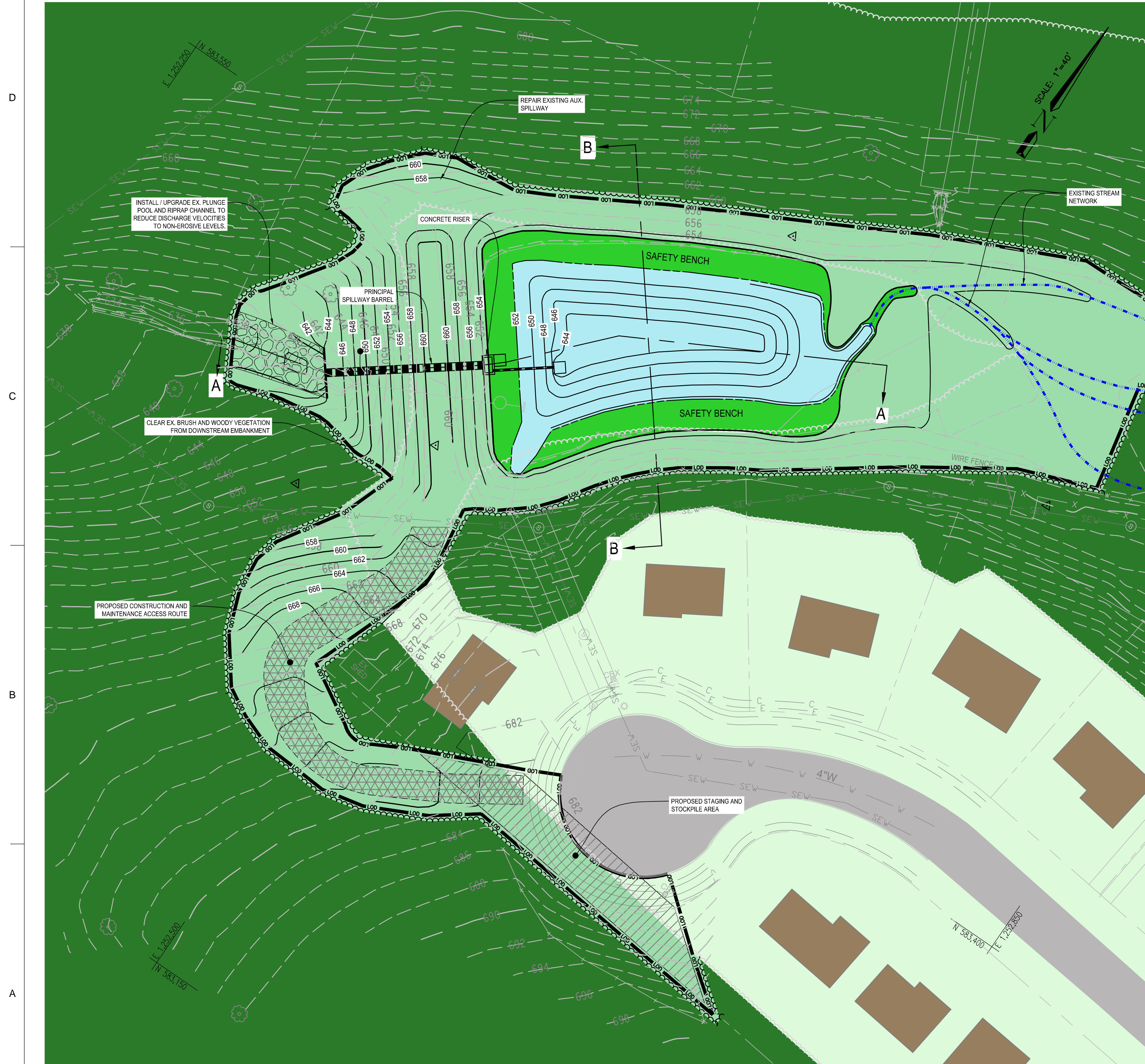


**CLEARSPRING STORMWATER MANAGEMENT PROJECT**  
 MONTGOMERY COUNTY DEPARTMENT OF ENVIRONMENTAL PROTECTION MAGRUDER BRANCH (TRIBUTARY TO UPPER GREAT SENECA CREEK IN THE POTOMAC RIVER WATERSHED)



**ASSET #11423 PROPOSED RETROFIT PLAN VIEW**



FIGURE 1. REPLACE EXISTING RISER WITH WATERTIGHT CONCRETE RISER.



FIGURE 2. EXCAVATE EXISTING POND TO PROVIDE MAXIMUM TREATMENT VOLUME.



FIGURE 3. UPGRADE RIPRAP CHANNEL AT POND OUTFALL TO REDUCE DISCHARGE VELOCITIES TO NON-EROSIVE LEVELS.

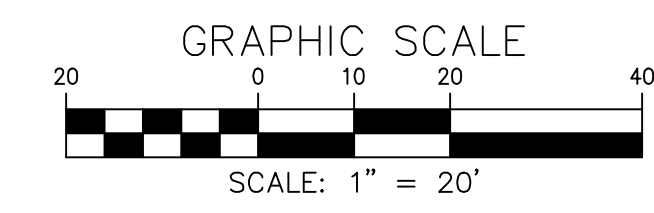


FIGURE 4. REPLACE EXISTING METAL PIPE WITH WATERTIGHT CONCRETE PIPE.



FIGURE 5. CLEAR EXISTING BRUSH AND WOODY VEGETATION FROM DOWNSTREAM EMBANKMENT.

LEGEND	
NORMAL POOL	
FOREST	
TURFGRASS	
SHORELINE VEGETATION	
RIPRAP CHANNELS	
CONSTRUCTION AND MAINTENANCE ACCESS ROAD	
TEMPORARY CONSTRUCTION STAGING AND STOCKPILE AREA	
EX. CONTOUR	
PROPOSED CONTOUR	
LIMITS OF DISTURBANCE	
EXISTING STREAM NETWORK	



MARK	DESCRIPTION	DATE	APPR.	DATE	APPR.

DESIGNED BY:	MR. CRAIG CARSON	DATE:	OCTOBER, 2014
DRAWN BY:	ADG	TASK ORDER NO.:	WRE12-28
CHECKED BY:	JBB	CONTRACT NO.:	
APPROVED BY:		FILE NUMBER:	
DATE:	10/31/2014		

WIRE 12 - TASK ORDER 28  
 CLEARSPRING MAJOR SWM POND RETROFIT  
 (ASSET #11423) AND CONSTRUCTION  
 OF 4" W 4" W 4" W 4" W 4" W 4" W  
 MONTGOMERY COUNTY, MARYLAND

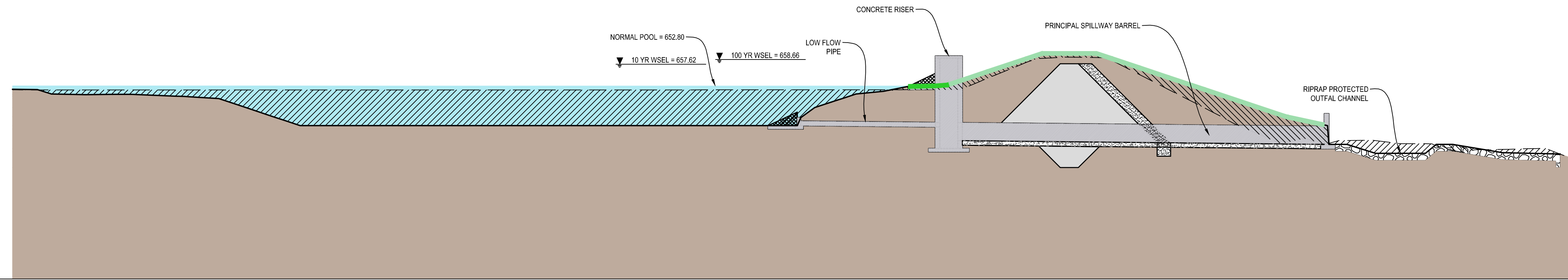
SHEET NO.  
 1 OF 2  
 EX-01

# CLEARSPRING STORMWATER MANAGEMENT PROJECT

MONTGOMERY COUNTY DEPARTMENT OF ENVIRONMENTAL PROTECTION - MAGRUDER BRANCH (TRIBUTARY TO UPPER GREAT SENECA CREEK IN THE POTOMAC RIVER WATERSHED)

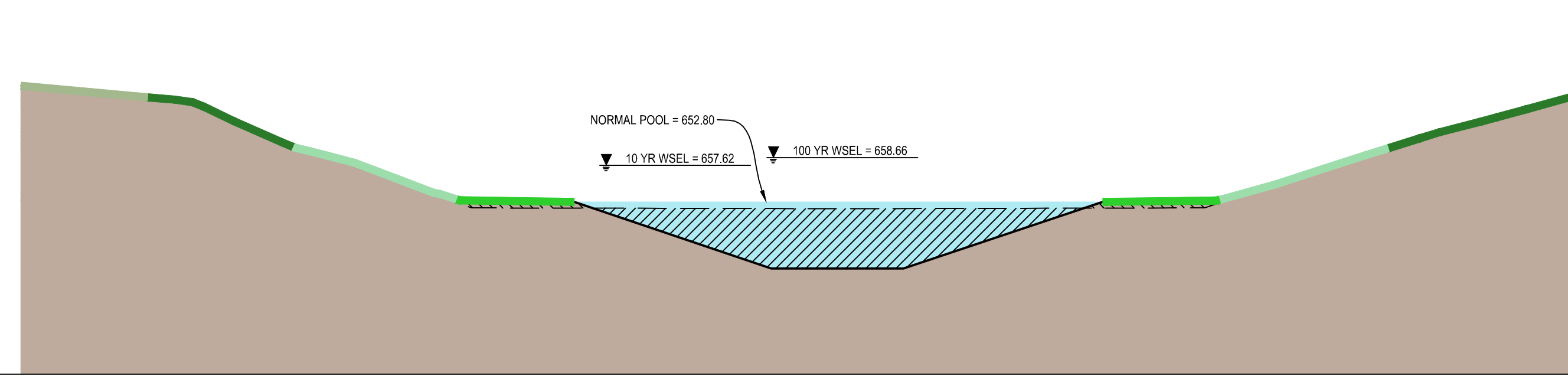


D  
670  
665  
660  
655  
650  
645  
640  
635  
630  
625  
620  
615  
610



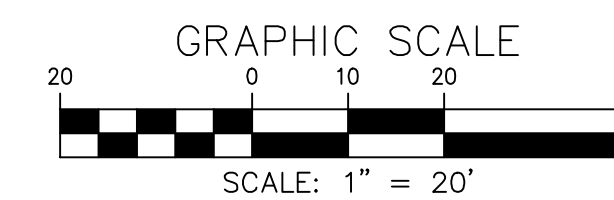
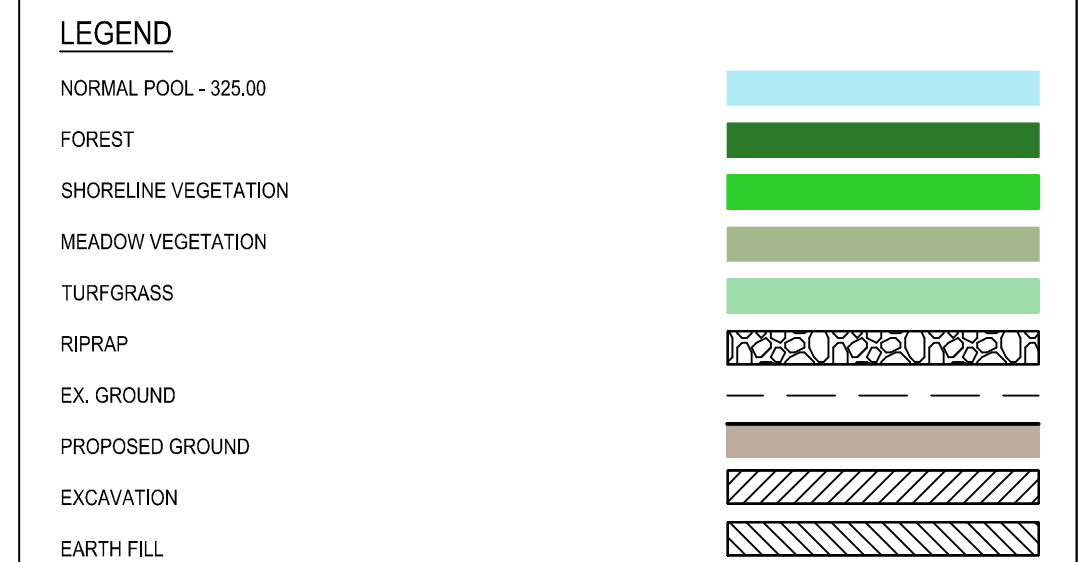
ASSET #11423 PROPOSED RETROFIT PROFILE SECTION A-A

C  
675  
670  
665  
660  
655  
650  
645  
640  
635  
630



ASSET #11423 PROPOSED RETROFIT PROFILE SECTION B-B

B  
A



DATE	APPR.	DESCRIPTION

DESIGNED BY: JBB	DATE: OCTOBER, 2014
DESIGNED BY: JBB	TASK ORDER NO.: WRE-28
DESIGNED BY: JBB	CONTRACT NO.:
DESIGNED BY: JBB	FILE NUMBER:
DESIGNED BY: JBB	PLOT DATE: 10/31/2014
DESIGNED BY: JBB	FILE NAME: 28-EX-02.DWG
DESIGNED BY: JBB	ANSI D:

**MR. CRAIG CARSON**  
MONTGOMERY COUNTY DEPARTMENT OF ENVIRONMENTAL PROTECTION  
255 ROCKVILLE PIKE SUITE 120  
ROCKVILLE, MD 20850

**CPJ Associates**

WRE 12 - TASK ORDER 28  
CLEARSPRING MAJOR SWM POND RETROFIT (ASSET #11423) AND CONSTRUCTION OF MAGRUDER BRANCH SWM POND  
MONTGOMERY COUNTY, MARYLAND

SWM POND RETROFIT PROFILES

SHEET NO.  
2 OF 2  
EX-02