

Before



STEP POOL (SP)



After

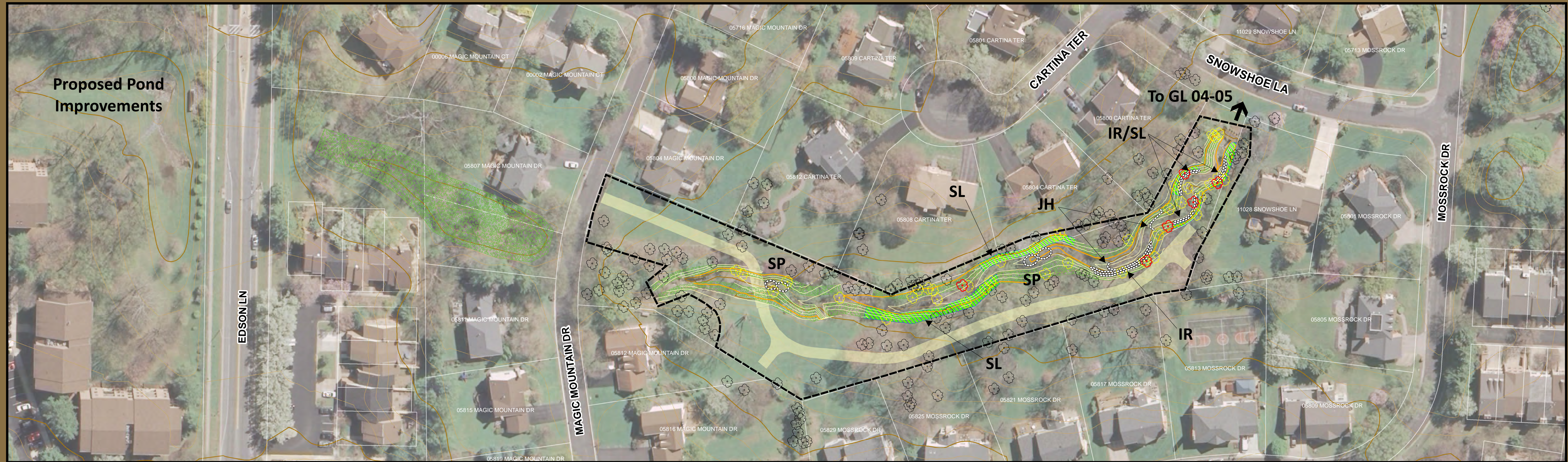
Before



VEGETATIVE PLANTING

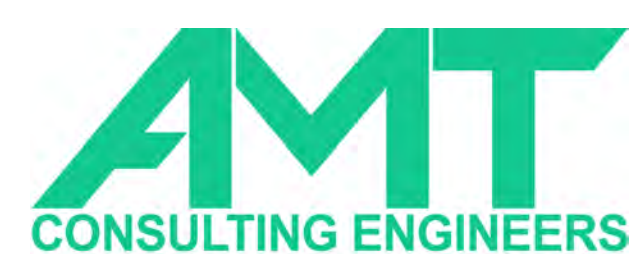


After



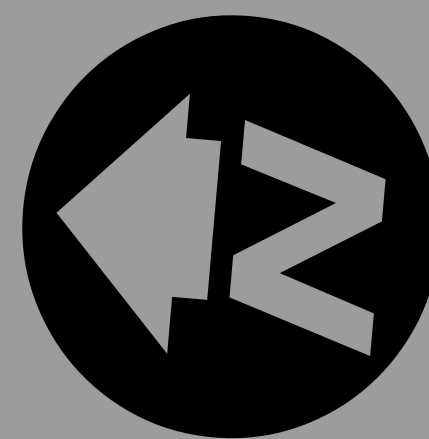
# Grosvenor Site GL01-03 Stream Restoration Project

## Stream Restoration Techniques



### Legend

- |                        |                       |
|------------------------|-----------------------|
| Proposed 1-ft Contour  | Existing 2-ft Contour |
| Index Contour          | Index Contour         |
| Tree                   | Limit of Disturbance  |
| Tree Removed           | Temporary Access Road |
| Tree Removed (d > 24") | Property Boundary     |
| Rock Structure         |                       |
| Vegetative Planting    |                       |
| Soil Lift              |                       |



Before



After

J-HOOK (JH)

Before



CROSS VANE (CV)



After

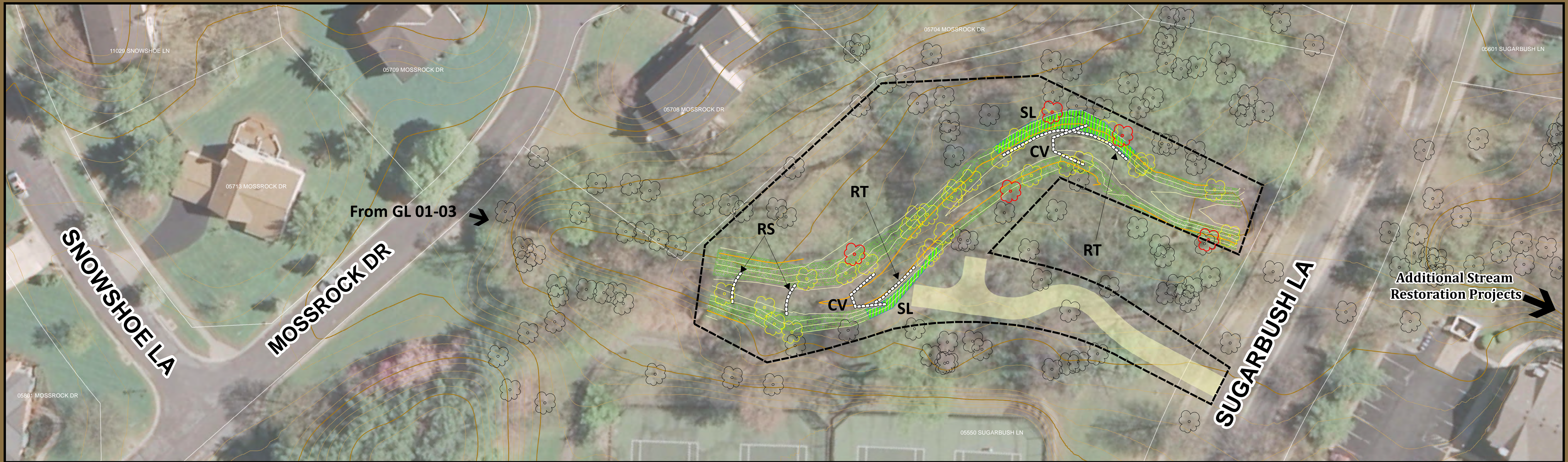
Before



SOIL LIFT (SL)

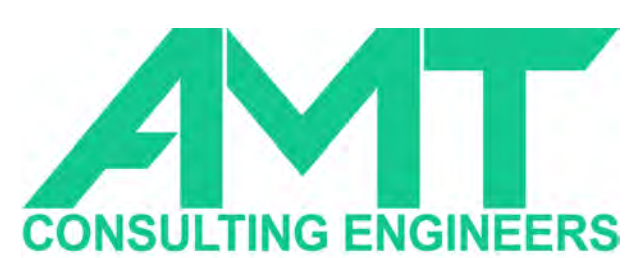


After

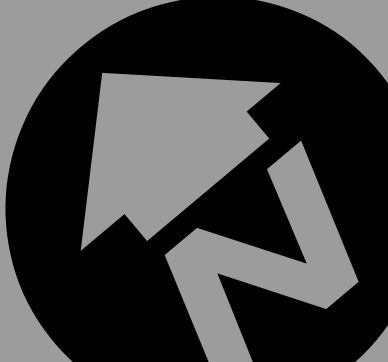


# Grosvenor Site GL04-05 Stream Restoration Project

## Stream Restoration Techniques



### Legend

- |                        |                       |
|------------------------|-----------------------|
| Proposed 1-ft Contour  | Existing 2-ft Contour |
| Index Contour          | Index Contour         |
| Tree                   | Limit of Disturbance  |
| Tree Removed           | Temporary Access Road |
| Tree Removed (d > 24") | Property Boundary     |
| Rock Structure         |                       |
| Vegetative Planting    |                       |
| Soil Lift              |                       |
- 0 25 50 100 Feet
- 

Before



After

IMBRICATED RIP-RAP (IR)