

Before



STEP POOL (SP)



After

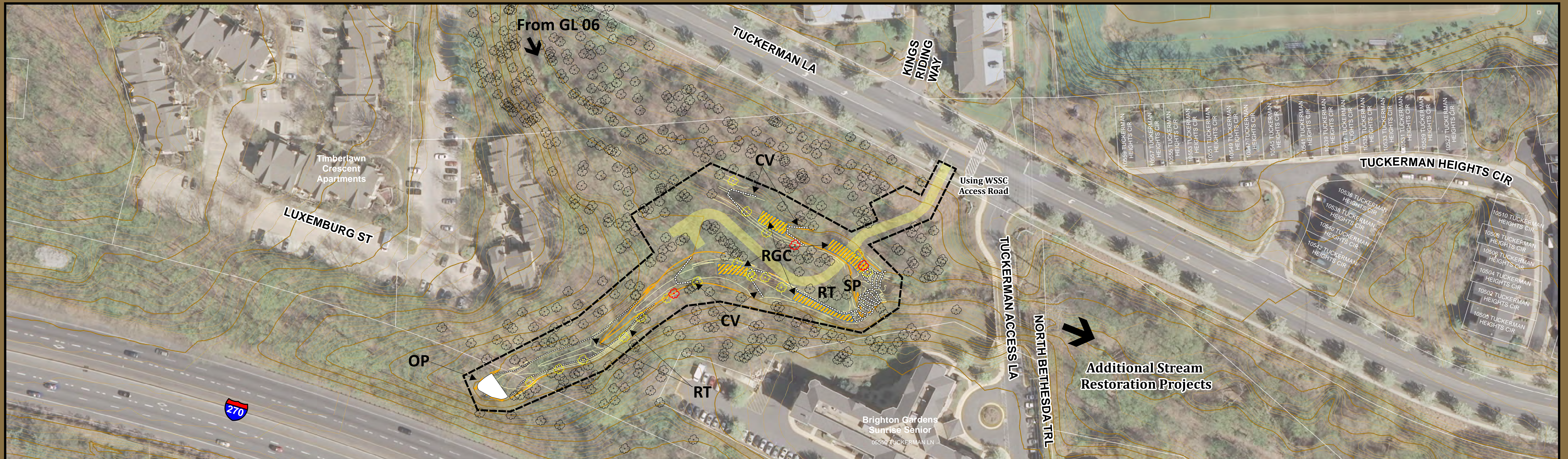
Before



RIFFLE GRADE CONTROL (RGC)



After



Grosvenor Site GL 07 - RY 22 Stream Restoration Project

Stream Restoration Techniques



Legend

- | | |
|------------------------------|------------------------------|
| Proposed 1-ft Contour | Existing 2-ft Contour |
| Contour | Contour |
| Index Contour | Index Contour |
| Tree | Limit of Disturbance |
| Tree Removed | Temporary Access Road |
| Tree Removed (d > 24") | Property Boundary |
| Rock Structure | |

CROSS VANE (CV)
OUTFALL PROTECTION (OP)

0 55 110 220 Feet



Before



After

ROCK TOE (RT)

CROSS VANE W/ RIFFLE GRADE CONTROL (CV/RGC)

ROCK TOE (RT)

Before



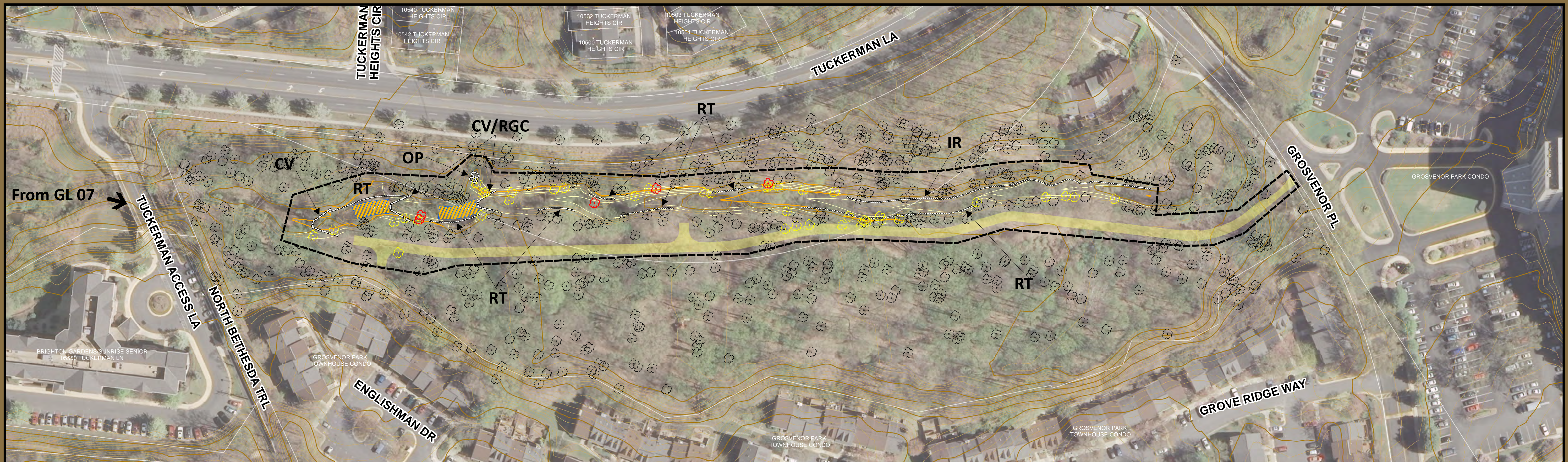
After



Before

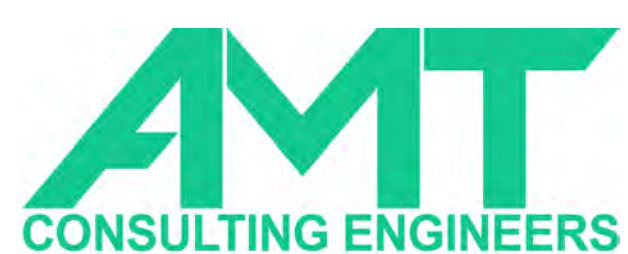


After



Grosvenor Site GL 08 Stream Restoration Project

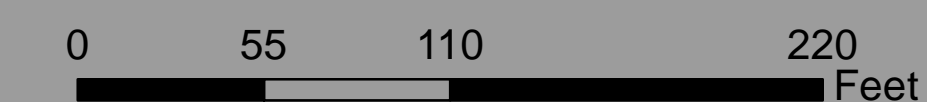
Stream Restoration Techniques



Legend

- | | |
|------------------------------|------------------------------|
| Proposed 1-ft Contour | Existing 2-ft Contour |
| Contour | Contour |
| Index Contour | Index Contour |
| Tree | Limit of Disturbance |
| Tree Removed | Temporary Access Road |
| Tree Removed (d > 24") | Property Boundary |
| Rock Structure | |
| Riffle Grade Control | |

OUTFALL PROTECTION (OP)



Before



After



IMBRICATED ROCK WALL (IR)

Before



CROSS VANE (CV)



After

Before



ROCK CASCADE (RC)

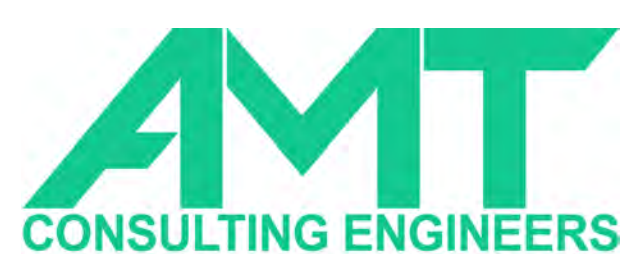


After



Grosvenor Site SP 13 Stream Restoration Project

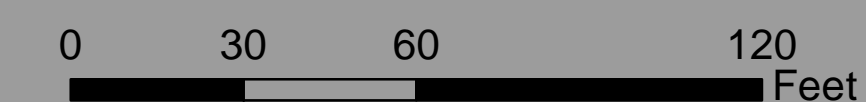
Stream Restoration Techniques



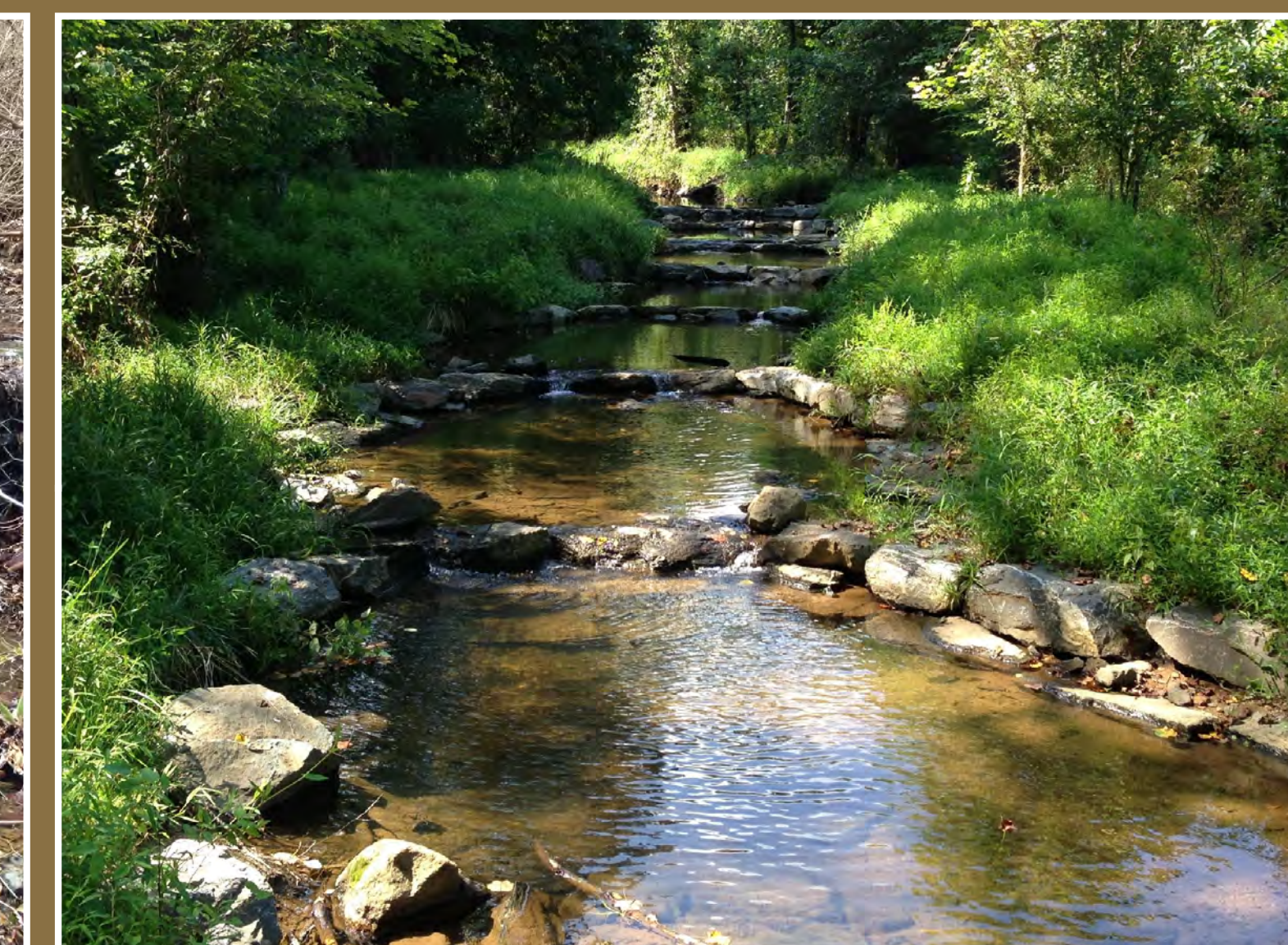
Legend

- | | |
|------------------------|-----------------------|
| Proposed 1-ft Contour | Existing 2-ft Contour |
| Index Contour | Index Contour |
| Tree | Limit of Disturbance |
| Tree Removed | Temporary Access Road |
| Tree Removed (d > 24") | Property Boundary |
| Rock Structure | |
| Riffle Grade Control | |

IMBRICATED ROCK WALL (IR)



Before



After

STEP POOL (SP)