

Before



### CROSS VANE (CV)



After

Before



### STEP POOL (SP)

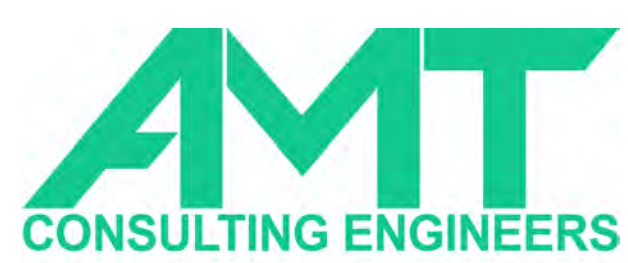


After



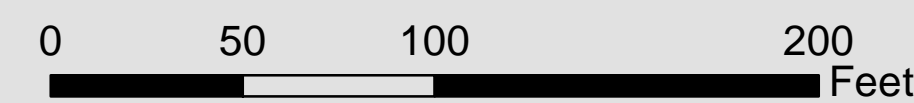
## Luxmanor Branch Site RY21 Stream Restoration Project

### Stream Restoration Techniques



#### Legend

- |                              |                              |
|------------------------------|------------------------------|
| <b>Proposed 1-ft Contour</b> | <b>Existing 2-ft Contour</b> |
| Contour                      | Contour                      |
| Index Contour                | Index Contour                |
| Tree                         | Limit of Disturbance         |
| Tree Removed                 | Temporary Access Road        |
| Tree Removed (d > 24")       | Property Boundary            |
| Rock Structure               |                              |
| Riffle Structure             |                              |



Before



After

### IMBRICATED RIP-RAP (IR)

CROSS VANE (CV)



Before



After

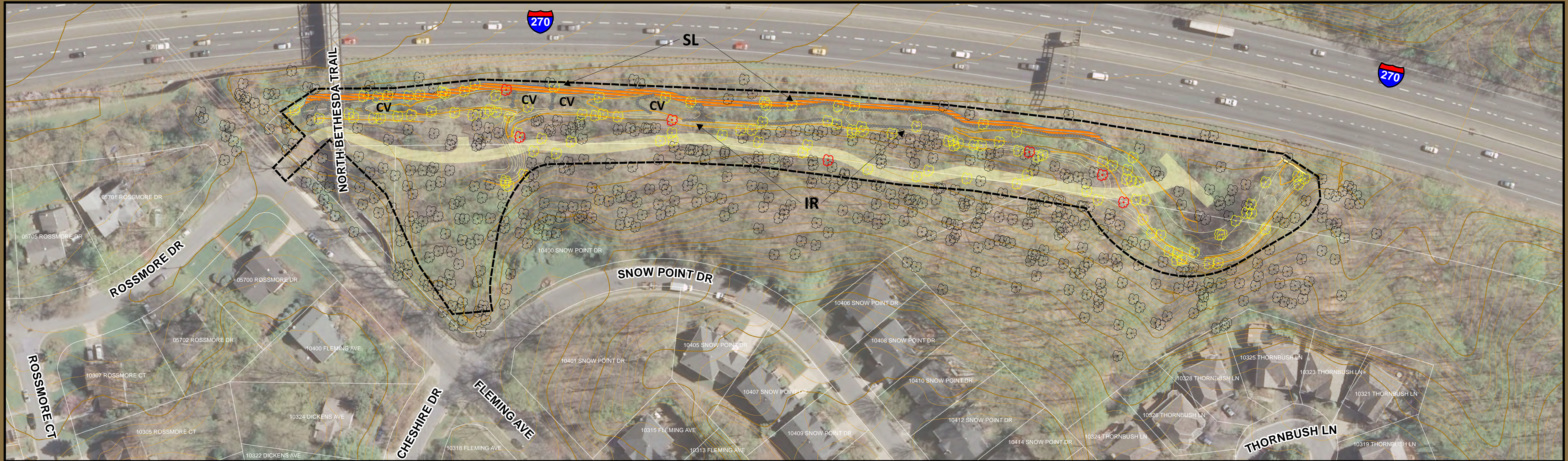
SOIL LIFT (SL)



Before

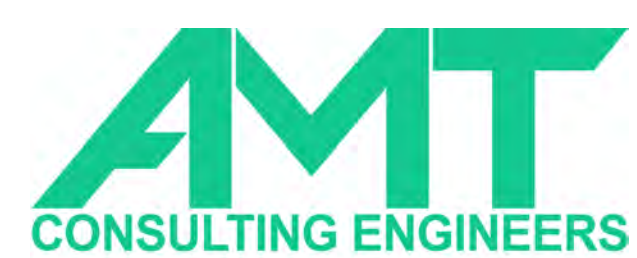


After



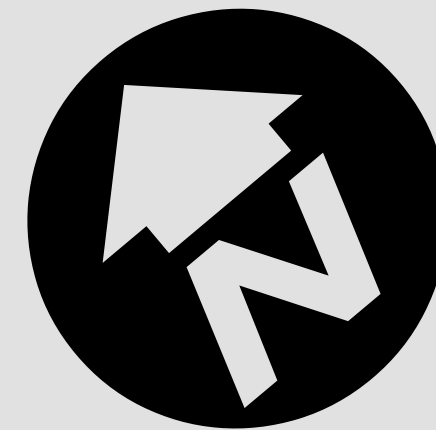
# Grosvenor Site SP11-12 Stream Restoration Project

## Stream Restoration Techniques



### Legend

- |                              |                              |
|------------------------------|------------------------------|
| <b>Proposed 1-ft Contour</b> | <b>Existing 2-ft Contour</b> |
| Contour                      | Contour                      |
| Index Contour                | Index Contour                |
| Tree                         | Limit of Disturbance         |
| Tree Removed                 | Temporary Access Road        |
| Tree Removed (d > 24")       | Property Boundary            |
| Rock Structure               |                              |
| Soil Lift                    |                              |



Before



After

IMBRICATED RIP-RAP (IR)