

Longmead Crossing Stormwater Management Pond Improvement

Virtual Public Meeting

May 18, 2021



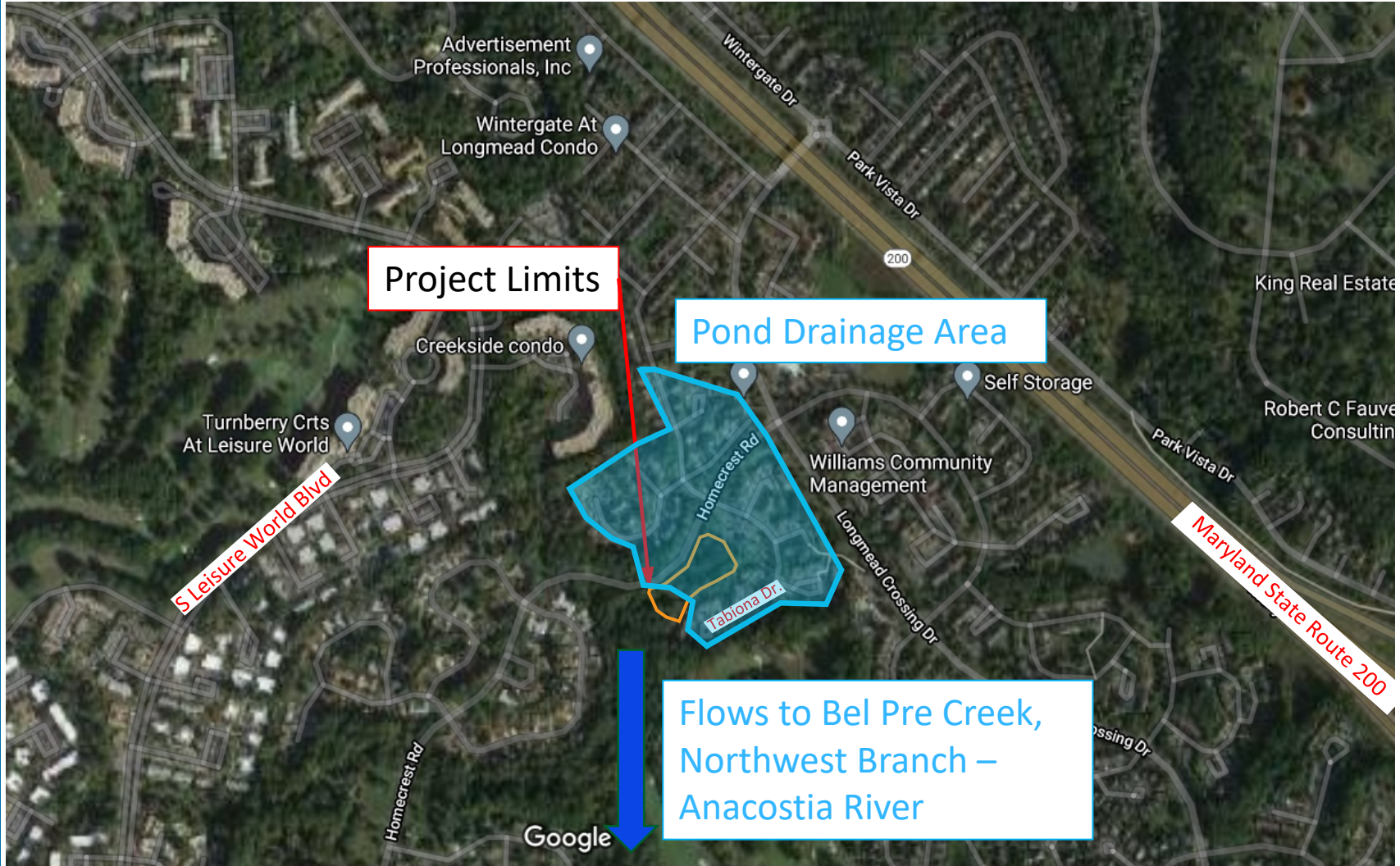
**DEPARTMENT OF
ENVIRONMENTAL
PROTECTION**
MONTGOMERY COUNTY • MARYLAND

Agenda

- Project Background
- New Wet Pond Design
- What to Expect
- Questions



Project Location



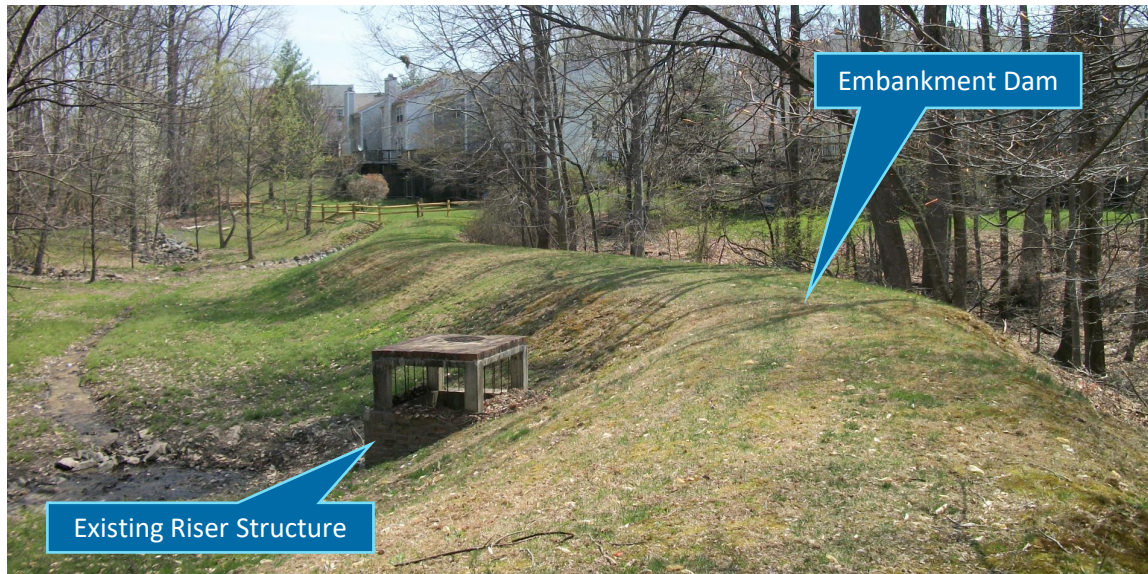
Watershed Restoration and Stormwater Facility Maintenance

- Over 14,000 stormwater facilities inspected by County
- Capital Projects
 - Structural Maintenance
 - Dredging
 - Pipe Replacements
 - Safety improvements
 - Updates to Existing Stormwater Management
 - New Stormwater Management



Existing Longmead Crossing Pond

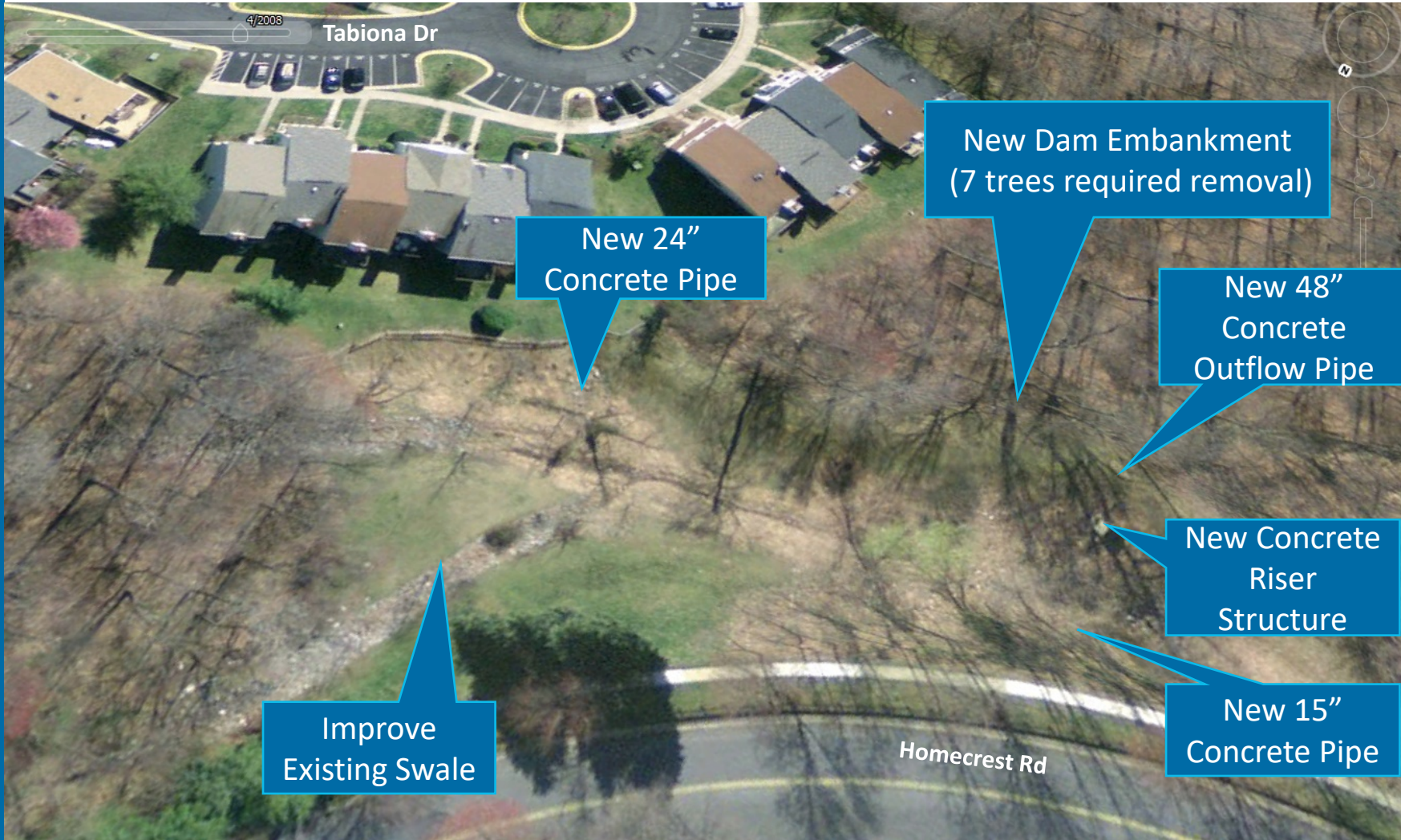
- **Stormwater Management Dry Pond**
 - Does not meet current SWM requirements to achieve any MS4 credit
- **Multiple Inflow Channels**
 - One specifically in poor condition, heavily eroded
- **14' High Earth Embankment Dam**
 - Not up to current Maryland standards
- **Existing Concrete Riser Structure**
 - Regulates flow out of pond



Project Objectives

- **Stormwater Management**
 - Create design that provides water quality treatment
- **Stream Protection**
 - Provide design elements that better regulate pond discharge and protect the Northwest Branch of the Anacostia River
- **Maintenance**
 - Replace outdated pond elements with updated features that require less long-term maintenance
- **Aesthetics/Environment**
 - Provide landscaping that improves aquatic habitat and aesthetics

Proposed Design – Structural Features



Improve Existing Swale

New 24" Concrete Pipe

New Dam Embankment (7 trees required removal)

New 48" Concrete Outflow Pipe

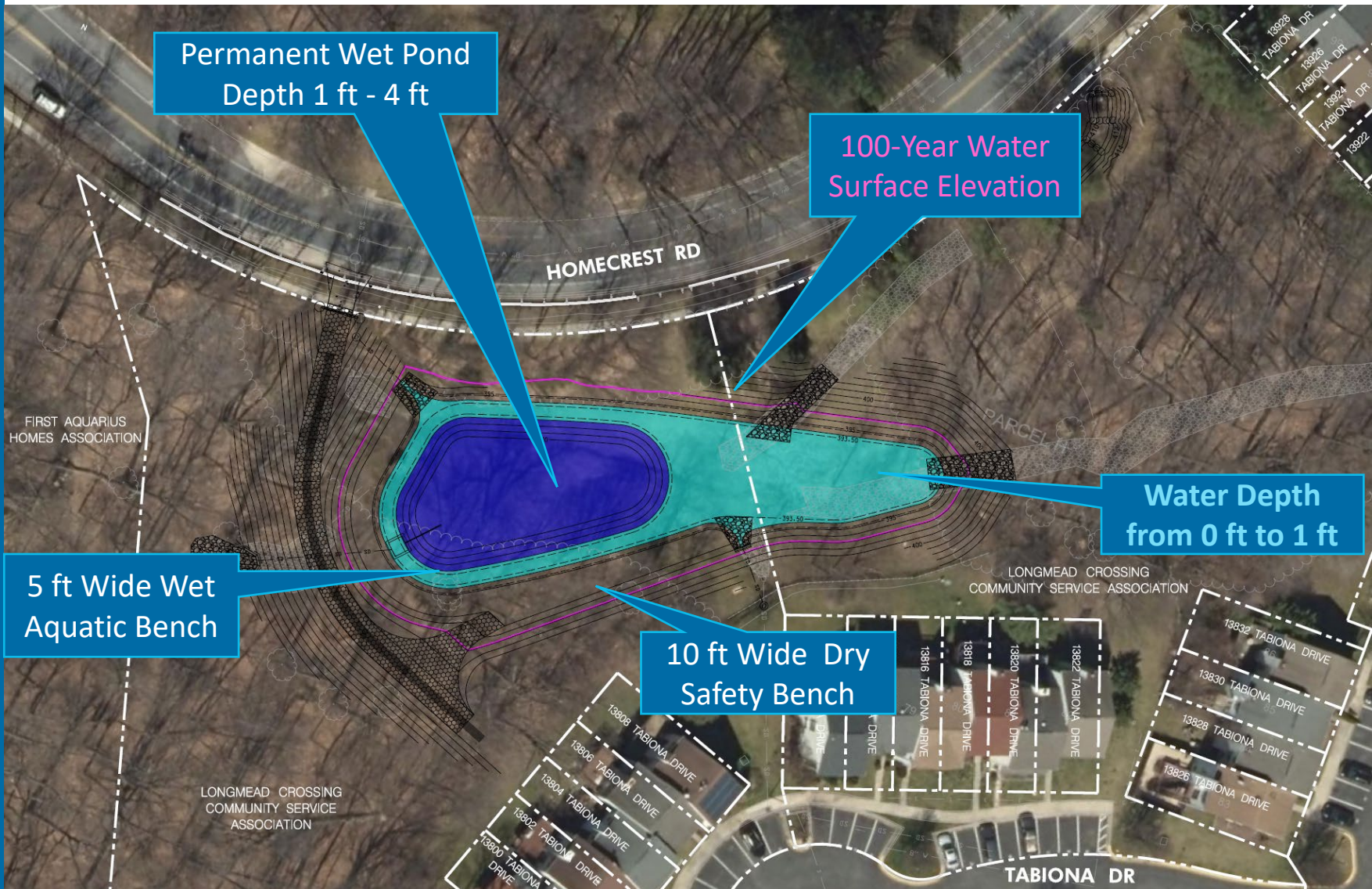
New Concrete Riser Structure

New 15" Concrete Pipe

4/2008
Tabiona Dr

Homecrest Rd

Proposed Design – Water Depth



Permanent Wet Pond
Depth 1 ft - 4 ft

100-Year Water
Surface Elevation

Water Depth
from 0 ft to 1 ft

5 ft Wide Wet
Aquatic Bench

10 ft Wide Dry
Safety Bench

FIRST AQUARIUS
HOMES ASSOCIATION

HOMECREST RD

LONGMEAD CROSSING
COMMUNITY SERVICE ASSOCIATION

LONGMEAD CROSSING
COMMUNITY SERVICE
ASSOCIATION

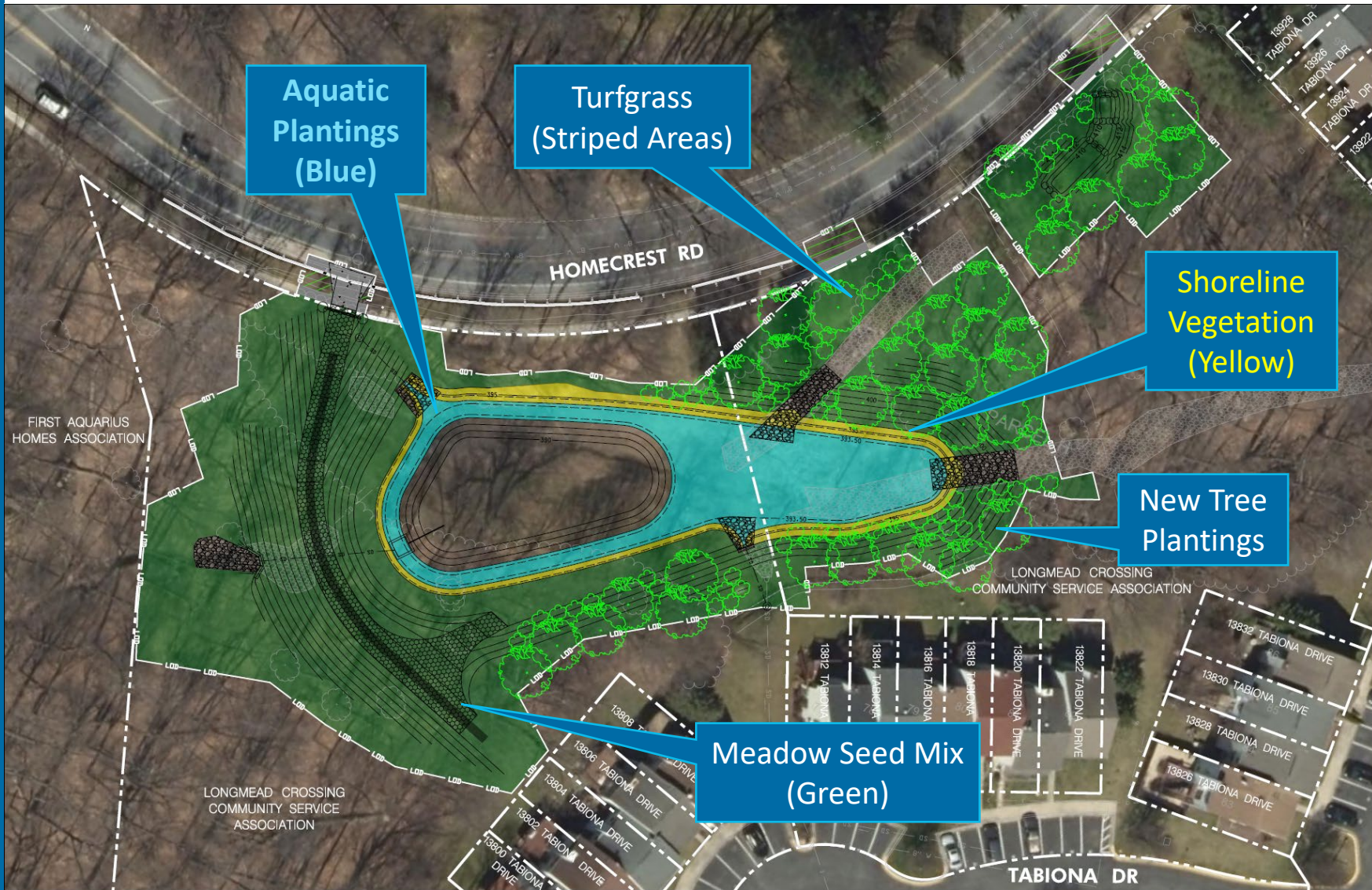
TABIONA DR

13800 TABIONA DRIVE
13802 TABIONA DRIVE
13804 TABIONA DRIVE
13806 TABIONA DRIVE
13808 TABIONA DRIVE

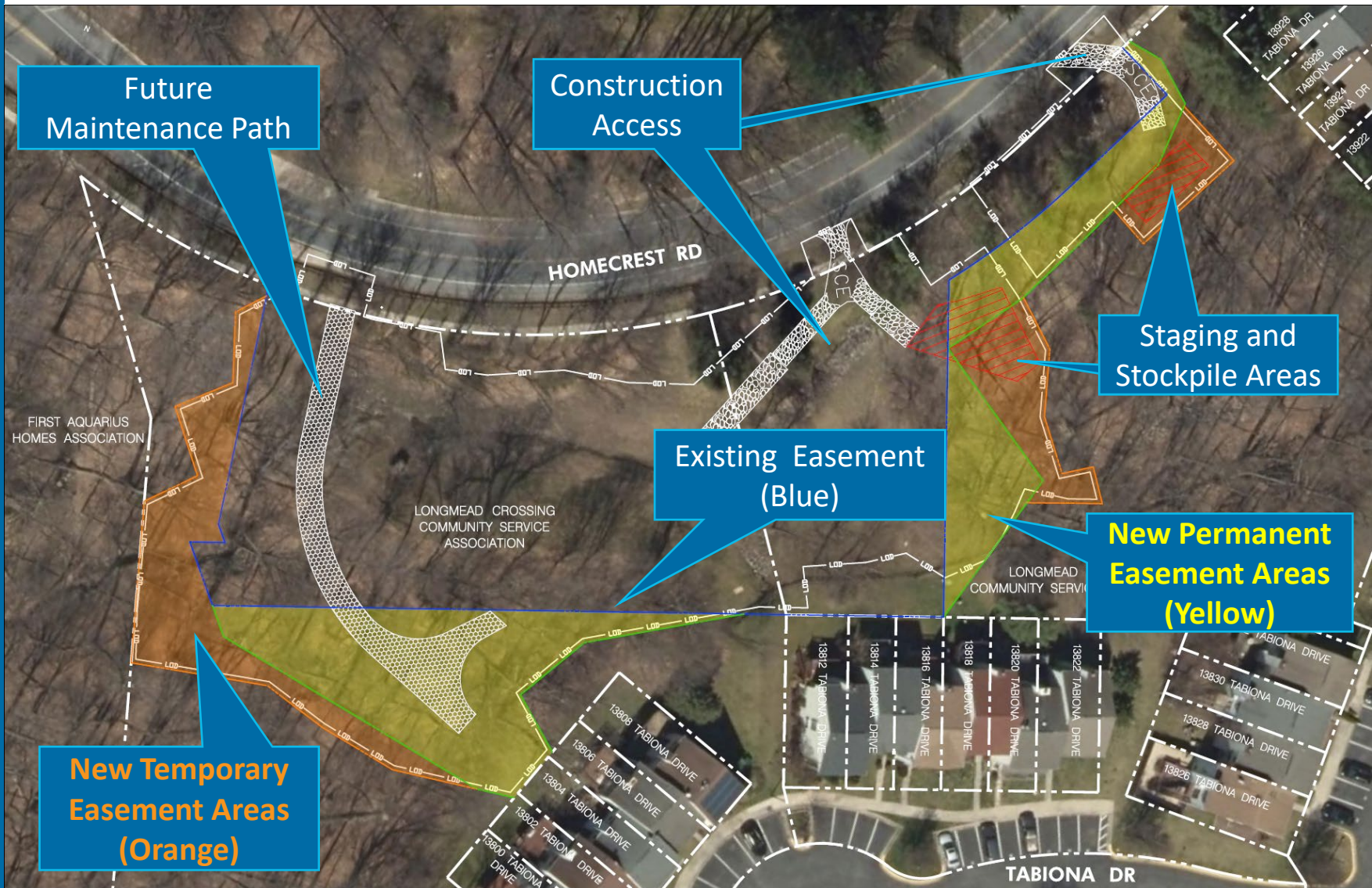
13810 TABIONA DRIVE
13812 TABIONA DRIVE
13814 TABIONA DRIVE
13816 TABIONA DRIVE
13818 TABIONA DRIVE
13820 TABIONA DRIVE
13822 TABIONA DRIVE

13824 TABIONA DRIVE
13826 TABIONA DRIVE
13828 TABIONA DRIVE
13830 TABIONA DRIVE
13832 TABIONA DRIVE

Proposed Design – Vegetation



Proposed Design – Access & Easements



Future Maintenance Path

Construction Access

Staging and Stockpile Areas

Existing Easement (Blue)

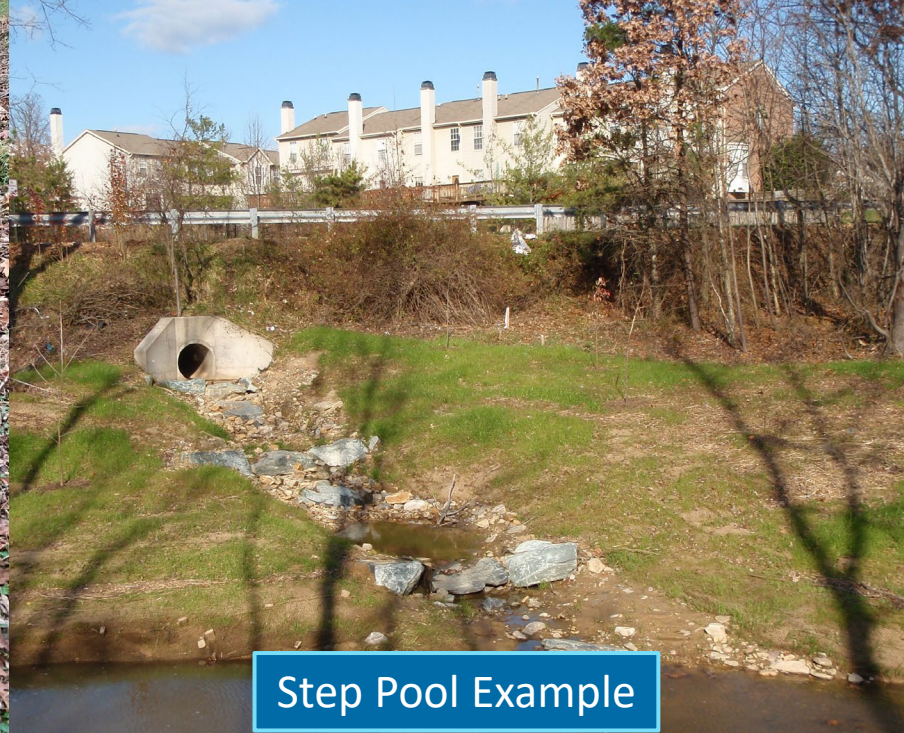
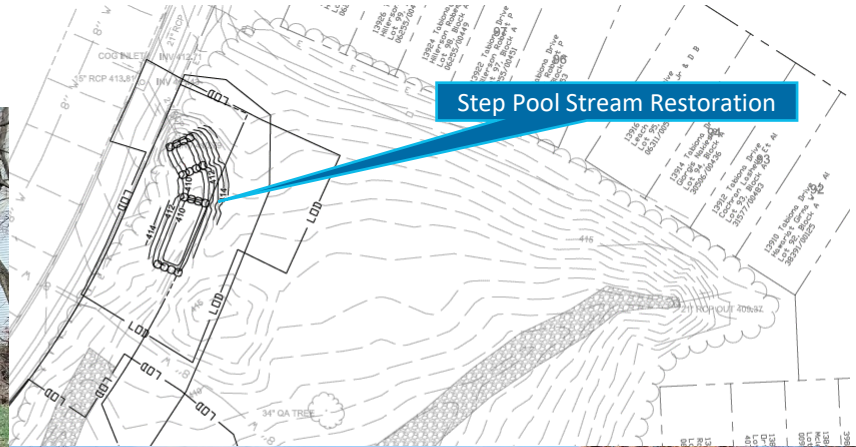
New Permanent Easement Areas (Yellow)

New Temporary Easement Areas (Orange)

Proposed Design – Inflow Step Pool

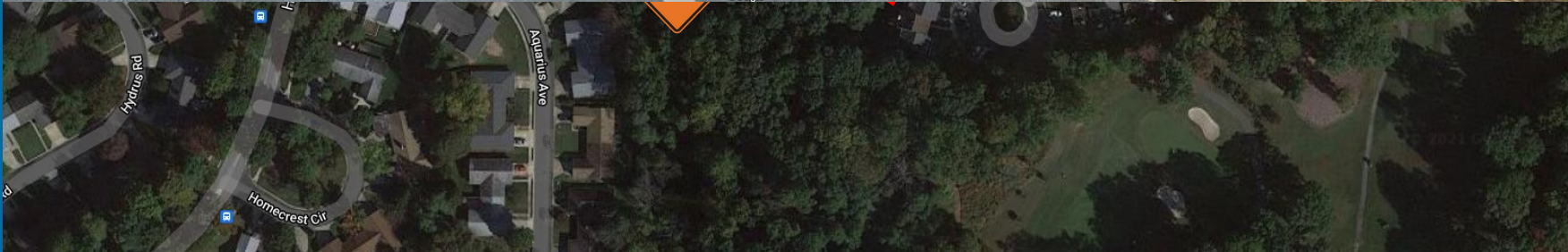


Existing Channel



Step Pool Example

Proposed Design – Traffic Safety



Project Benefits

- **Water** – improved water quality and reduction in stream erosion through better management of runoff.
- **Environmental** – Increased aquatic and riparian habitat through landscaping within pond.
- **Aesthetic** – increased aesthetic appeal through reduction in erosion and new plantings.
- **Maintenance** – safer operating structures that will require minimal structural and mowing maintenance in the future.

Pond Examples



Fallsberry Pond



Pond Examples – Kemp Mill



Retrofit Schedule

- Design and Permitting Ongoing - Fall 2021
- Permits Secured Fall 2021
- Construction Bidding Winter – Early 2022
- Construction Begins Spring 2022 (6-8 months)

What to Expect During Construction

- **Resident Notification**

- Project Website
- Project Sign

- **Duration**

- About 6 months

- **Construction Hours**

- Monday through Friday, 7AM – 4PM

- **Safety**

- Fencing around construction
- Follow applicable COVID-19 precautions at time

- **Traffic**

- Minor from entering and exiting construction traffic and contractor parking during the day
- Sidewalk Detour



Other DEP Programs for Residents

- RainScapes – rainscapes.org



- Tree Montgomery – treemontgomery.org



- Organic Lawn Care

- www.montgomerycountymd.gov/lawns

- Residential Energy Program

- www.montgomerycountymd.gov/green/energy/home

- Volunteer

- www.montgomerycountymd.gov/water/volunteer



Questions?

Contact: Christy Ciarametaro

Watershed Project Planner

Christy.Ciarametaro@montgomerycountymd.gov

240-777-7720

Project Website:

<https://www.montgomerycountymd.gov/water/restoration/longmead-crossing.html>

OR

Google “Longmead Crossing Stormwater Pond”



DEPARTMENT OF
ENVIRONMENTAL PROTECTION
MONTGOMERY COUNTY • MARYLAND

Working together for a cleaner, greener, economically vibrant community