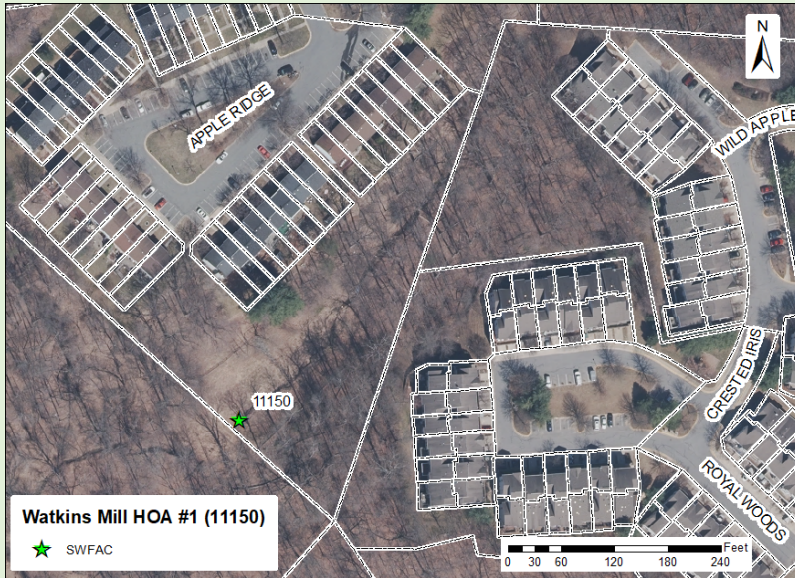


# Watkins Mill HOA #1 (Asset #11150)

## Stormwater Management Facility Repair/Retrofit Fact Sheet

Updated 4/26/23



[Map] Stormwater Management Project Location.  
<http://www.montgomerycountymd.gov/water/stormwater/major-projects.html>

### Project Facts\*

Project Status	In Design
Total Drainage Area:	22.04 Ac
Total Percent Impervious:	22%
Estimated Construction Timeline	Summer 2023 - Spring 2024
Watershed:	Seneca Creek Watershed
Contact:	Doug Marshall
Email:	<a href="mailto:douglas.marshall@montgomerycountymd.gov">douglas.marshall@montgomerycountymd.gov</a>
Phone:	(240) 777-7767

*\*Information is subject to change*

## Project Selection

Montgomery County, through its Department of Environmental Protection (DEP), is responsible for the Stormwater Facility Maintenance Program (SWFMP) that is charged with the maintenance and repair of stormwater management (SWM) facilities throughout Montgomery County. The SWFMP's goal is to maintain and improve SWM facilities for which the County has assumed responsibility for structural maintenance, to ensure ongoing facility function to protect local stream and watershed health. DEP conducts ongoing maintenance inspections to assess the condition and maintenance needs of these SWM facilities.

This pond was built in the late 1970's. In 2005, DEP accepted the facility into its maintenance program in as-is condition and put it into the major maintenance project schedule. Little to no maintenance was performed prior to the County accepting the facility into its maintenance program.



[Photo 1] Existing Eroded CMP Outfall Pipe

## Existing conditions



[Photo 2] Overall view of existing conditions.



[Photo 3] Overall view of pond facility.

The DEP performed routine maintenance between 2010 and 2013. Field inspections in 2015 indicated that the existing 18" corrugated metal pipe (CMP) outfall is rusted and corroded. This pipe will need to be removed and replaced.

This pond was also constructed prior to current stormwater management design requirements. The work currently proposed will address ongoing maintenance needs and major structural updates and repairs to bring the pond up to current standards, including the following:

- removal and replacement of the riser structure and the corroded CMP outfall pipe with a new concrete riser structure and concrete outfall pipe.
- excavating the existing pond bottom to create a wet pool 3.5-feet deep that will provide the necessary water quality control treatment. The additional volume will also allow the pond to provide the required Channel Protection Volume (CPv).
- regrading existing pond to achieve the water quality storage volume and full CPv.

As part of the maintenance and retrofit work, the pond will be planted with attractive native vegetation suitable for aquatic habitat.

### Contact Us

Doug Marshall  
240-777-7767  
[douglas.marshall@montgomerycountymd.gov](mailto:douglas.marshall@montgomerycountymd.gov)

### Visit the Project Website

Check the link  
<http://www.montgomerycountymd.gov/water/restoration/Watkins-Mill.html>