

Before



CROSS VANE (CV)



After

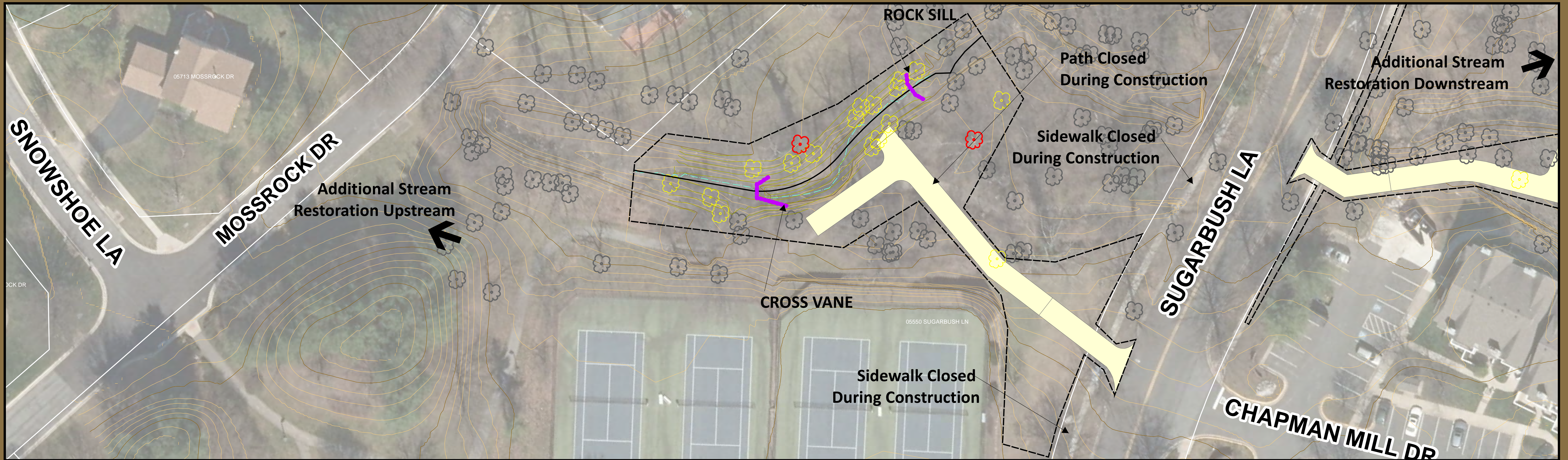
Before



VEGETATIVE PLANTING



After



# Grosvenor - Penbrooke Stream Restoration Project

## Stream Restoration Techniques

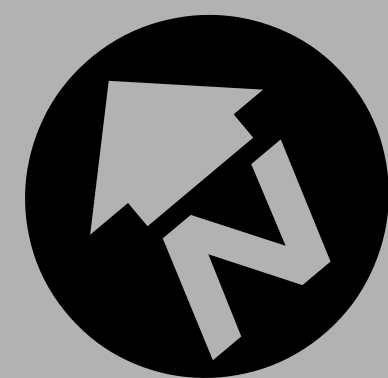
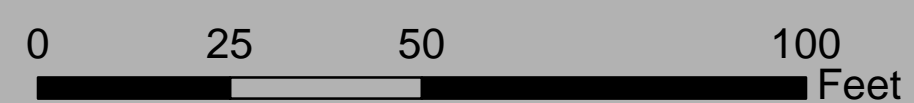
June 2021



### Legend

- Proposed Contour
- Proposed Stream
- Tree
- Tree to be Removed
- Tree to be Removed (diameter > 24")
- Proposed Rock Structure
- Existing Contour
- Existing Index Contour
- Limit of Disturbance
- Temporary Access Path
- Property Boundary
- Existing Stream

\*All Areas within the Limits of Disturbance (LOD) are to be planted with native landscaping, including trees, shrubs and seeding.



Before



ROCK SILL



After