

Before



### STEP POOL (SP)



After

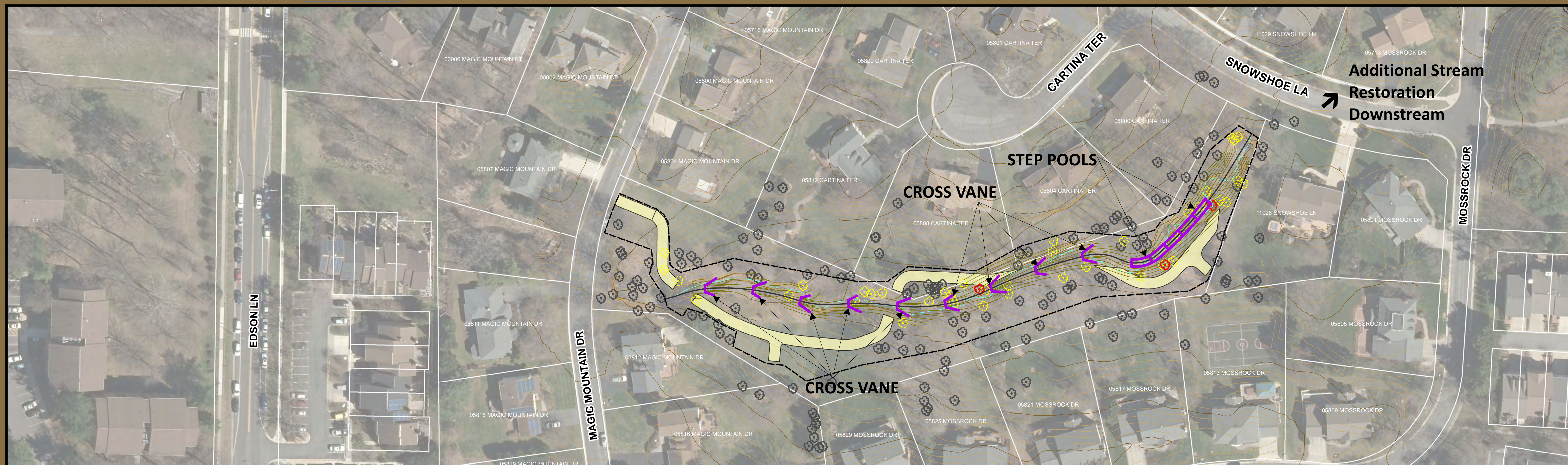
Before



### VEGETATIVE PLANTING



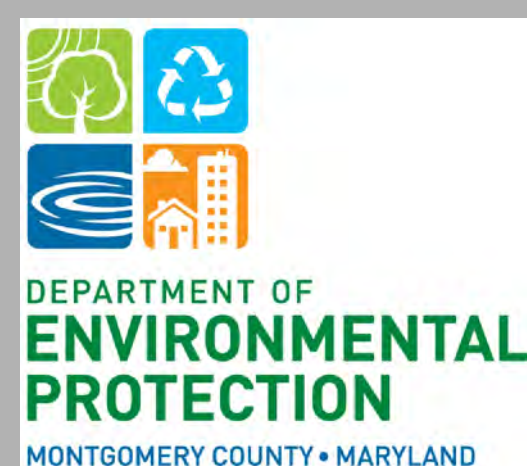
After



## Grosvenor - Timberlawn Stream Restoration Project

### Stream Restoration Techniques

June 2021

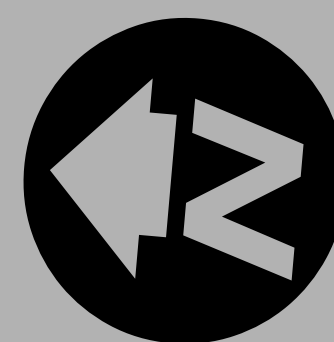


#### Legend

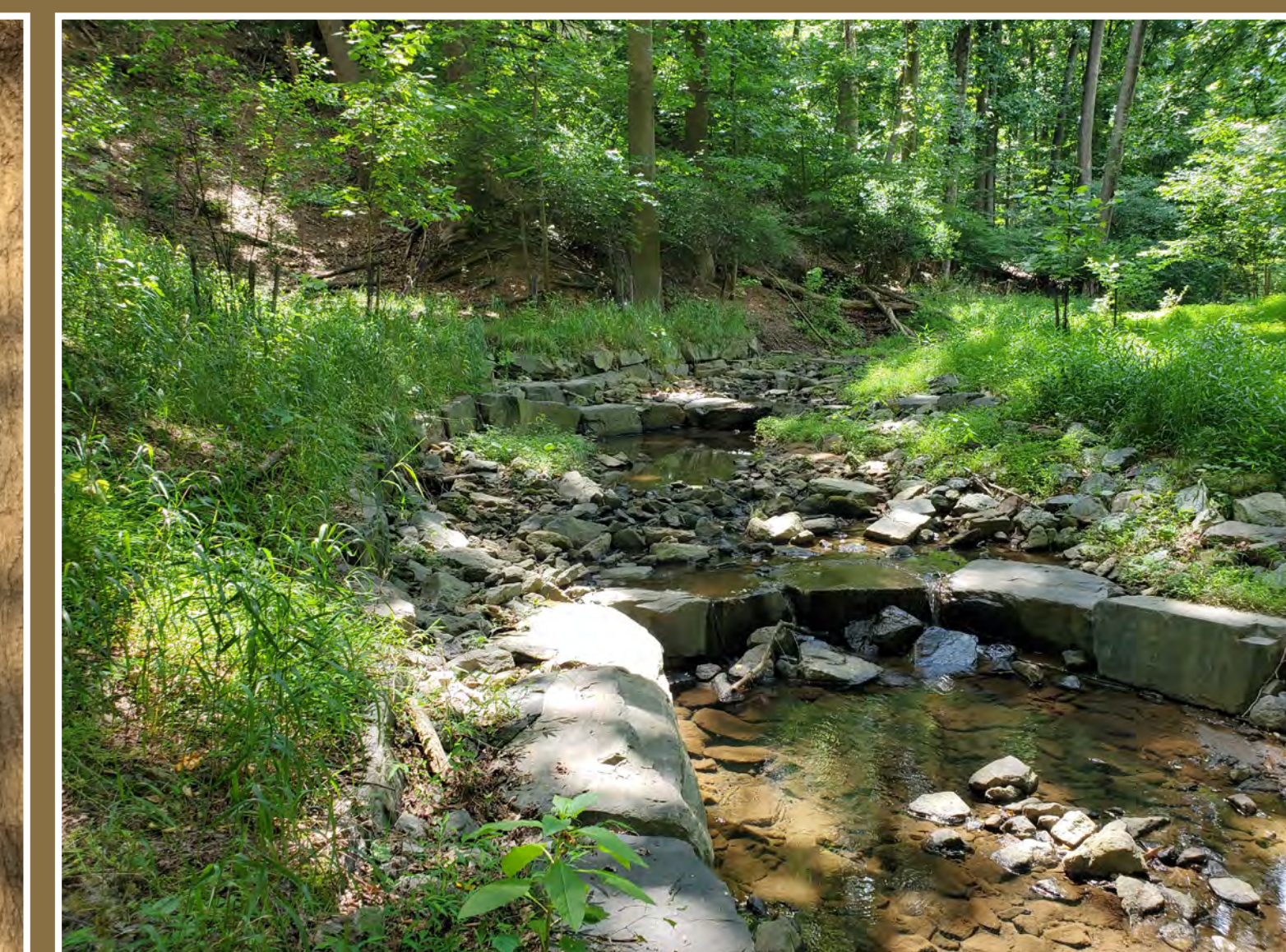
- Proposed Contour
- Proposed Stream
- Tree
- Tree to be Removed
- Tree to be Removed (diameter > 24")
- Proposed Rock Structure
- Existing Contour
- Existing Index Contour
- Limit of Disturbance
- Temporary Access Path
- Property Boundary
- Existing Stream

\*All Areas within the Limits of Disturbance (LOD) are to be planted with native landscaping, including trees, shrubs and seeding.

0 50 100 200 Feet



Before



After

### CROSS-VANE (CV)