

Montgomery County  
Department of  
Environmental  
Protection  
**RAINSCAPES  
PROGRAM**



**CONSERVATION  
LANDSCAPE**  
Planting Design  
Templates

Easy planting  
layouts for your  
RainScapes project



# Table of Contents

Table of Contents .....	2
Introduction.....	3
1. SUNNY MEADOW: Back Corner.....	4
<i>Plants for Sunny Meadow Back Corner.....</i>	<i>5</i>
2. SUNNY MEADOW: Front Yard .....	6
<i>Plants for Sunny Meadow Front Yard.....</i>	<i>7</i>
3. SUNNY MEADOW: Slope.....	8
<i>Plants for Sunny Meadow Slope .....</i>	<i>9</i>
4. SHADY GLADE: Back Corner .....	10
<i>Plants for Shady Glade Back Corner .....</i>	<i>11</i>
5. SHADY GLADE: Front Yard.....	12
<i>Plants for Shady Glade Front Yard .....</i>	<i>13</i>
6. SHADY GLADE: Slope .....	14
<i>Plants for Shady Glade Slope.....</i>	<i>15</i>
Cross-sections and Modules.....	16
Plant Index .....	18

# Introduction

## What is RainScapes Conservation Landscaping?

RainScapes conservation landscaping is an effective technique used to help manage stormwater runoff while improving the ecological function of a site. It is especially suitable for large areas requiring stormwater control, or where other constraints, such as mature tree roots, underground utilities, or areas close to buildings, prevent the use of other methods of stormwater management. A conservation landscape is much like traditional landscaping but is used to replace lawn, bare ground or invasive-infested areas with a palette of mostly native plant species planted densely enough to withstand water flow pressure from stormwater runoff. Improved soil condition below ground works hand-in-hand with the plants above ground. The incorporation of compost is a key component of conservation landscapes for improving soil health and making the soil better able to absorb and filter water.

## Benefits

Well-designed conservation landscapes are easy to maintain, visually pleasing, and environmentally friendly. Conservation landscaping benefits wildlife, the environment, neighborhoods, and homeowners. There is less area to mow, so environmentally damaging emissions and time spent mowing are reduced. Many native plant species are deeply rooted and more resistant to insects, plant disease, and drought. By replacing traditional landscape practices such as lawns and groundcover beds with native plants, you can reduce the impact of runoff as well as reduce the need to use pesticides, fertilizers, and tapwater. RainScapes gardens are expected to have layers of plants which lead to environmentally rich gardens that manage stormwater runoff. The aesthetics of conservation landscaping can be tailored to specific preferences, varying from more naturalistic to more formal.

## Garden Planning

Before taking shovel to ground, however, you'll first need to put pen to paper. Developing a planting plan— a visual map of the plant arrangement and plant quantities— is an important first step to ensuring a successful conservation landscape. It is also a requirement for participating in the RainScapes Rewards Rebate Program. We recognize that this can be an especially daunting task for the inexperienced. The templates in this guide are intended to act as both a starting point and a reference for those who are not experienced in design. Those who have some design experience but seek inspiration will also find the templates to be a useful resource.

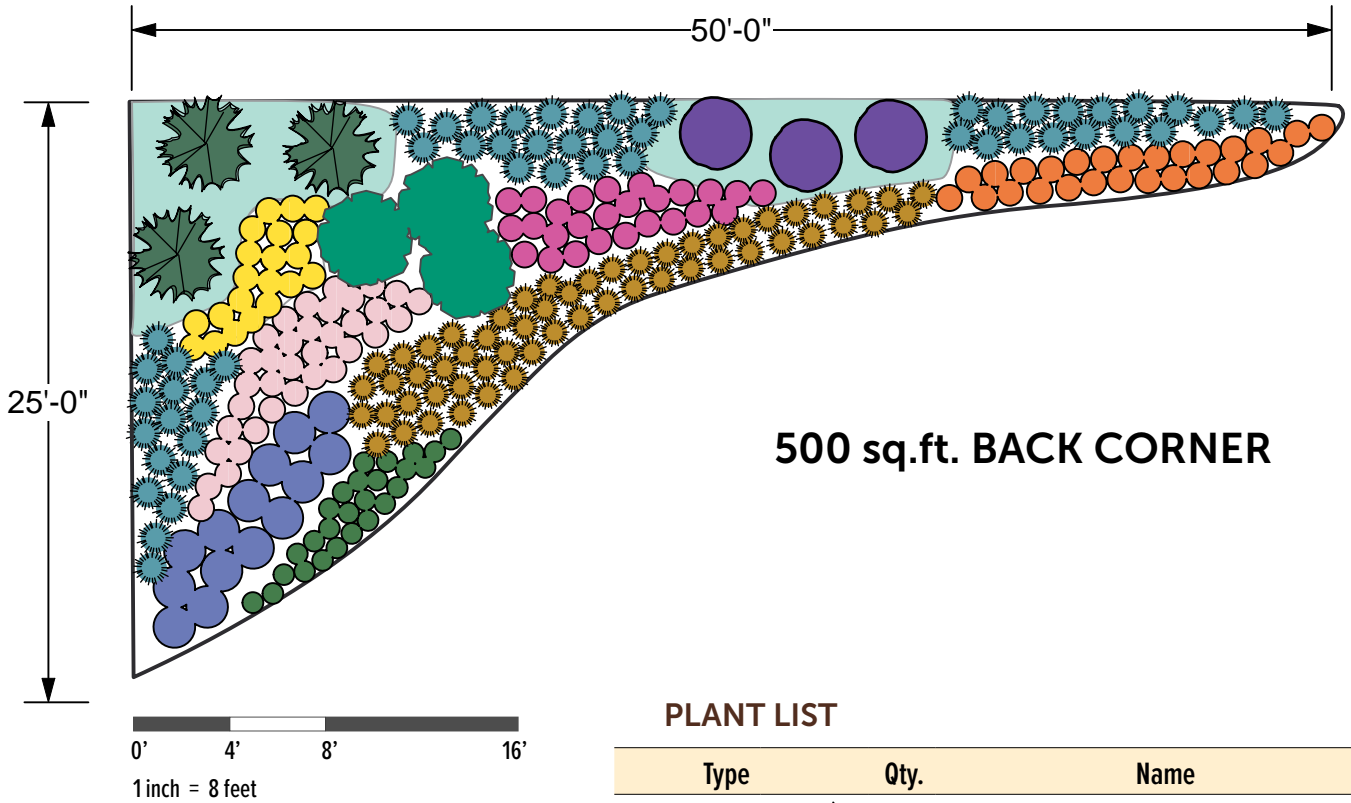
## What's in a Planting Plan?

Planting plans detail the plant species, container sizes of purchased plants, number of plants, planting densities, planting materials, and soil amendments, and include a maintenance plan. They have both a graphic layout map and a plant list/schedule which identifies the plants that will be used in the design. This is a skill that takes time to develop and the planting design templates for both *RainScapes Conservation Landscapes* and the companion *RainScapes Rain Gardens* are planting designs for layered garden systems. The planting plan layouts in this guide are conceived as typical scenarios that RainScapes staff have encountered on a recurrent basis since the program started to offer rebates for conservation landscapes (2007).

## Why Use a Template?

The designs in this guide are organized by typical residential locations and site conditions and are offered as 250 SF modules— the minimum conservation landscape size eligible for a RainScapes Rewards rebate. These modules can be combined to create larger projects or used as-is to create a garden that is appropriate for managing on-lot stormwater by improving soil health and cover. Using a template means that your garden will be planted sufficiently to be stable very quickly as flowing water moves through the garden. The roots of the plants will help to both stabilize the soil and help water to better infiltrate. A template takes a lot of guess work out of plant species selection and organization and can be customized to your location and conditions. Plus you will know exactly how many of each plant species are needed for purchase. Each template plant list contains a link to a plant calculator tool to help in making modifications to that plant list. We recommend that, unless you are a professional or an experienced gardener, you use the templates we have developed.

# 1. Sunny Meadow • Back Corner



### PLANT LIST

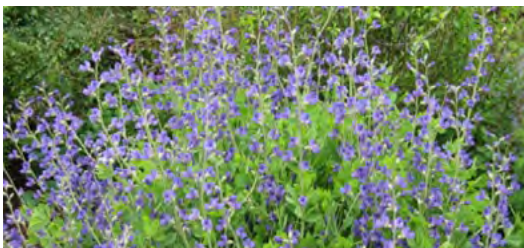
Type	Qty.	Name
TREE:	3	<i>Juniperus virginiana</i> 'Taylor' (Eastern Red Cedar)
SHRUB:	3	<i>Rhus aromatica</i> 'Gro-Low' (Fragrant Sumac)
PERENNIALS:	3	<i>Baptisia</i> 'Purple Smoke' (Wild Indigo)
	13	<i>Symphotrichum oblongifolium</i> 'October Skies' (Aromatic Aster)
	21	<i>Asclepias tuberosa</i> (Butterflyweed)
	21	<i>Liatris spicata</i> (Blazingstar)
	17	<i>Oenothera fruticosa</i> (Sundrops)
	25	<i>Penstemon digitalis</i> (Hairy Beardtongue)
	32	<i>Sisyrinchium angustifolium</i> (Blue-eyed Grass)
	32	<i>Eragrostis spectabilis</i> (Purple Lovegrass)
	40	<i>Schizachyrium scoparium</i> 'Standing Ovation' (Little Bluestem)
	82	<i>Salvia lyrata</i> (Lyreleaf Sage)



*Juniperus virginiana* 'Taylor'



*Liatris spicata*

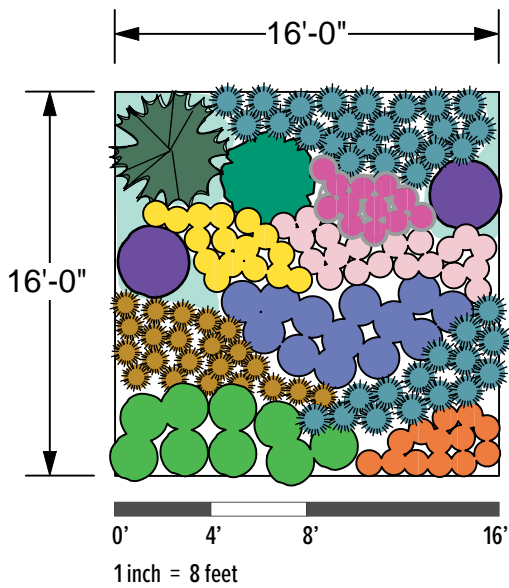


*Baptisia* 'Purple Smoke'

## Plants for Sunny Meadow BACK CORNER

Plant Type	Scientific Name	Common Name	Height	Spacing	Attributes	Alternative Plant
Tree	<i>Juniperus virginiana</i> 'Taylor'	Eastern Red Cedar	15.0'-20.0'	48"	A tall, narrow, columnar form of eastern red cedar with silvery blue-green foliage. Good for small landscapes and narrow spaces.	<i>Photinia melanocarpa</i> (non-evergreen) – A multiple-stemmed deciduous shrub featuring clusters of white flowers in spring followed by blue-black berries in summer. Flowers attract pollinators. Birds relish the fruit. Fall foliage can be a striking red.
Shrub	<i>Rhus aromatica</i> 'Gro-Low'	Fragrant Sumac	1.5'-2.0'	36"	A dense, low-growing deciduous shrub with glossy green foliage that can turn attractive hues of red and orange in fall. Good for slopes.	<i>Hypericum densiflorum</i> – Tall, dense, perennial with bright yellow flowers.
Perennial	<i>Baptisia</i> 'Purple Smoke'	Wild Indigo	3.0'-4.0'	24"	Upright perennial with many purple flowers atop flower spikes in spring.	<i>Pycnanthemum incanum</i> – An upright perennial topped in summer by dense rounded clusters of tiny white to lavender tubular flowers that are highly attractive to pollinators. Leaves surrounding the flowers are highlighted with silvery white. Expands into colonies from shallow rhizomes.
Perennial	<i>Symphyotrichum oblongifolium</i> 'October Skies'	Aromatic Aster	1.5'-2.0'	18"	An aster cultivar with a low mounding habit and a showy multitude of starry sky-blue flowers in early autumn.	<i>Symphyotrichum laeve</i> 'Bluebird' – Aster cultivar of medium height with attractive bluish-green foliage. Produces abundant violet-blue flowers in fall.
Perennial	<i>Asclepias tuberosa</i>	Butterflyweed	1.0'-2.5'	15"	Medium-height perennial with orange flowers in early summer.	<i>Liatris microcephalla</i> – Small, upright, clump-forming perennial. Produces multiple terminal spikes of fluffy, deep rose-purple flower heads in summer that are highly attractive to pollinators. Neat and tidy appearance. Great border plant.
Perennial	<i>Liatris spicata</i>	Blazingstar	2.0'-4.0'	15"	Medium-height perennial with protruding purple spikes in late summer.	<i>Echinacea purpurea</i> – Perennial with showy, pollinator-attracting flowers. Blooms profusely for up to two months in mid to late-summer with occasional rebloom in the fall. Seed heads that follow later in the season are a food source for birds such as Goldfinches.
Perennial	<i>Oenothera fruticosa</i>	Sundrops	1.5'-2.5'	15"	Erect stems have terminal clusters of bright yellow flowers in late spring. Flowers last a day, but bloom in long procession.	<i>Coreopsis verticillata</i> 'Zagreb' – This cultivar is a low-height rhizomatous perennial that grows in compact bushy clumps with thread-like leaves and bright yellow flowers in summer.
Perennial	<i>Penstemon digitalis</i>	Hairy Beardtongue	2.0'-4.0'	15"	Clump forming perennial with tubular flowers in mid-spring to early-summer.	<i>Monarda punctata</i> – Upright perennial with narrow aromatic leaves on purplish stems. Showy summer display of colored bracts and speckled, tubular flowers. Spreads by runners to form large clumps.
Perennial	<i>Sisyrinchium angustifolium</i>	Blue-eyed Grass	1.0'-2.0'	12"	Small, clump-forming perennial with fine-textured, grass-like leaves and violet-blue flowers. 'Lucerne' is a commonly used cultivar noted for its large, intensely-colored flowers and long bloom time.	<i>Allium cernuum</i> – Diminutive bulb with narrow grass-like leaves. Bears tall stalks in summer topped with star-like clusters of pale cream and pink flowers that distinctively nod downwards.
Perennial	<i>Eragrostis spectabilis</i>	Purple Lovegrass	1.0'-2.0'	15"	Short-statured, clumping grass with hazy reddish-purple inflorescence in fall.	<i>Sporobolus heterolepis</i> – A clump-forming, warm-season, perennial grass with clusters of slender stems held above the tufted grass. In fall, the foliage color turns to hues of gold.
Perennial	<i>Schizachyrium scoparium</i> 'Standing Ovation'	Little Bluestem	2.0'-4.0'	18"	Medium-height, upright clumping grass of slender, flat, linear bluish leaves, turning a striking reddish maroon in fall. Provides vertical element and winter interest.	<i>Andropogon virginicus</i> – Tall, upright, warm-season grass. Stands out in fall and winter with its orange-golden hue throughout winter. Most effective when massed. Adaptable to poor soil. Drought tolerant.
Perennial	<i>Salvia lyrata</i>	Lyreleaf Sage	1.0-2.0	12"	Low-growing evergreen groundcover with stalks of showy blue flowers in spring; readily spreads.	<i>Ruellia caroliniensis</i> – Diminutive, long-blooming perennial with white to deep purple trumpet-shaped flowers. Adaptable to varying conditions. Attracts butterflies.

# 2. Sunny Meadow • Front Yard



256 sq.ft. FRONT YARD

### PLANT LIST

Type	Qty.	Name
TREE:	1	<i>Juniperus virginiana</i> 'Taylor' (Eastern Red Cedar)
SHRUB:	1	<i>Rhus aromatica</i> 'Gro-Low' (Fragrant Sumac)
PERENNIALS:	2	<i>Baptisia</i> 'Purple Smoke' (Wild Indigo)
	12	<i>Symphotrichum ericoides</i> 'Snow Flurry' (Heath Aster)
	7	<i>Symphotrichum oblongifolium</i> 'October Skies' (Aromatic Aster)
	10	<i>Asclepias tuberosa</i> (Butterflyweed)
	5	<i>Liatris spicata</i> (Blazingstar)
	6	<i>Oenothera fruticosa</i> (Sundrops)
	15	<i>Penstemon digitalis</i> (Hairy Beardtongue)
	16	<i>Eragrostis spectabilis</i> (Purple Lovegrass)
	25	<i>Schizachyrium scoparium</i> 'Standing Ovation' (Little Bluestem)
	32	<i>Salvia lyrata</i> (Lyreleaf Sage)



*Schizachyrium scoparium*  
'Standing Ovation'



*Salvia lyrata*



*Asclepias tuberosa*



*Penstemon digitalis*



*Eragrostis spectabilis*

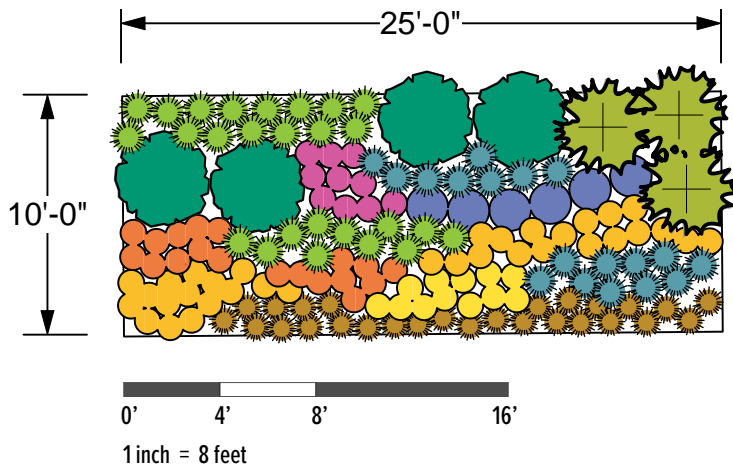


*Symphotrichum ericoides*  
'Snow Flurry'

## Plants for Sunny Meadow FRONT YARD

Plant Type	Scientific Name	Common Name	Height	Spacing	Attributes	Alternative Plant
Tree	<i>Juniperus virginiana</i> 'Taylor'	Eastern Red Cedar	15.0'-20.0'	48"	A tall, narrow, columnar form of eastern red cedar with silvery blue-green foliage. Good for small landscapes and narrow spaces.	<i>Photinia melanocarpa</i> (non-evergreen): A multiple-stemmed deciduous shrub featuring clusters of white flowers which bloom in spring followed by blue-black berries in summer. Flowers are attractive to pollinators. Birds relish the fruit. Fall foliage can be a striking red.
Shrub	<i>Rhus aromatica</i> 'Gro-Low'	Fragrant Sumac	1.5'-2.0'	36"	A dense, low-growing deciduous shrub with glossy green foliage leaves. Can turn attractive hues of red and orange in fall. Good for slopes.	<i>Hypericum densiflorum</i> : Tall, dense perennial with bright yellow flowers.
Perennial	<i>Baptisia</i> 'Purple Smoke'	Wild Indigo	3.0'-4.0'	24"	Upright perennial with many purple flowers atop flower spikes in spring.	<i>Pycnanthemum incanum</i> : An upright perennial topped in summer by dense rounded clusters of tiny white-to-lavender tubular flowers that are highly attractive to pollinators. The leaves surrounding the flowers are highlighted with silvery white. Expands into colonies from shallow rhizomes.
Perennial	<i>Symphotrichum ericoides</i> 'Snow Flurry'	Heath Aster	0.25'-0.50'	24"	A cultivar with prostrate form that spreads along the ground to form a dense foliage mat. Covered with a profusion of white flowers in fall.	<i>Phlox subulata</i> : Spring blooming fragrant perennial with lower growth habit.
Perennial	<i>Symphotrichum oblongifolium</i> 'October Skies'	Aromatic Aster	1.5'-2.0'	18"	An aster cultivar with low mounding habit and a showy multitude of starry sky-blue flowers in early autumn.	<i>Symphotrichum laeve</i> 'Bluebird': This aster cultivar of medium height and attractive bluish-green foliage produces abundant, violet-blue flowers in fall.
Perennial	<i>Asclepias tuberosa</i>	Butterflyweed	1.0'-2.5'	15"	Medium-height perennial with orange flowers in early summer.	<i>Liatris microcephala</i> : This small, upright, clump-forming perennial produces multiple terminal spikes of fluffy, deep rose-purple flower heads in summer that are highly attractive to pollinators. Neat and tidy appearance. Great border plant.
Perennial	<i>Liatris spicata</i>	Blazingstar	2.0'-4.0'	15"	Medium-height perennial with protruding purple spikes in late summer.	<i>Echinacea purpurea</i> : This perennial with showy, pollinator-attracting flowers blooms profusely for up to two months in mid to late-summer with occasional rebloom in the fall. The seed heads that follow later in the season are a food source for seed-eating birds, such as Goldfinches.
Perennial	<i>Oenothera fruticosa</i>	Sundrops	1.5'-2.5'	15"	Erect stems have terminal clusters of bright yellow flowers in late spring. Flowers last a day, but bloom in long procession.	<i>Coreopsis verticillata</i> 'Zagreb' – This cultivar is a low-height rhizomatous perennial that grows in compact bushy clumps with thread-like leaves and bright yellow flowers in summer.
Perennial	<i>Penstemon digitalis</i>	Hairy Beardtongue	2.0'-4.0'	15"	Clump-forming perennial with tubular flowers in mid-spring to early summer.	<i>Monarda punctata</i> : An upright perennial with narrow aromatic leaves on purplish stems, and in summer, a showy display of colored bracts and speckled, tubular flowers. Spreads by runners to form large clumps.
Perennial	<i>Eragrostis spectabilis</i>	Purple Lovegrass	1.0'-2.0'	15"	Short-statured, clumping grass with hazy reddish-purple inflorescence in fall.	<i>Sporobolus heterolepsis</i> : A clump-forming, warm season, perennial grass with clusters of slender stems held above the tufted grass. In fall the foliage color turns to hues of gold.
Perennial	<i>Schizachyrium scoparium</i> 'Standing Ovation'	Little Bluestem	2.0'-4.0'	18"	Medium-height, upright clumping grass of slender, flat, linear bluish leaves, turning a striking reddish maroon in fall. Provides vertical element and winter interest.	<i>Andropogon virginicus</i> : This tall, upright, warm-season grass stands out in fall and winter with its orange-golden hue throughout winter. Most effective when massed. Drought-tolerant and adaptable to poor soil.
Perennial	<i>Salvia lyrata</i>	Lyreleaf Sage	1.0-2.0	12"	Low-growing evergreen groundcover with stalks of showy blue flowers in spring; readily spreads.	<i>Ruellia caroliniensis</i> : A diminutive, long-blooming perennial with white to deep purple trumpet-shaped flowers, adaptable to varying conditions. Attracts butterflies.

# 3. Sunny Meadow • Slope



250sq. ft. SLOPE

### PLANT LIST

Type	Qty.	Name
SHRUB:	4	<i>Rhus aromatica</i> 'Gro-Low' (Fragrant Sumac)
PERENNIALS:	3	<i>Solidago rugosa</i> 'Fireworks' (Rough Goldenrod)
	6	<i>Symphotrichum oblongifolium</i> 'October Skies' (Aromatic Aster)
	13	<i>Asclepias tuberosa</i> (Butterflyweed)
	11	<i>Liatris spicata</i> (Blazingstar)
	11	<i>Oenothera fruticosa</i> (Sundrops)
	18	<i>Rudbeckia fulgida</i> (Orange Coneflower)
	17	<i>Eragrostis spectabilis</i> (Purple Lovegrass)
	23	<i>Panicum virgatum</i> 'Shenandoah' (Switchgrass)
	13	<i>Schizachyrium scoparium</i> 'Standing Ovation' (Little Bluestem)



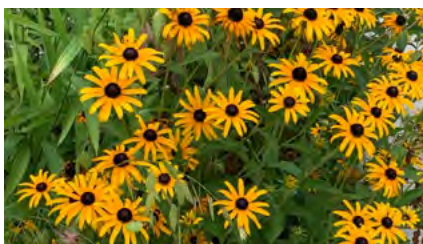
*Rhus aromatica* 'Gro-Low'



*Solidago rugosa* 'Fireworks'



*Panicum virgatum* 'Shenandoah'



*Rudbeckia fulgida*



*Oenothera fruticosa*



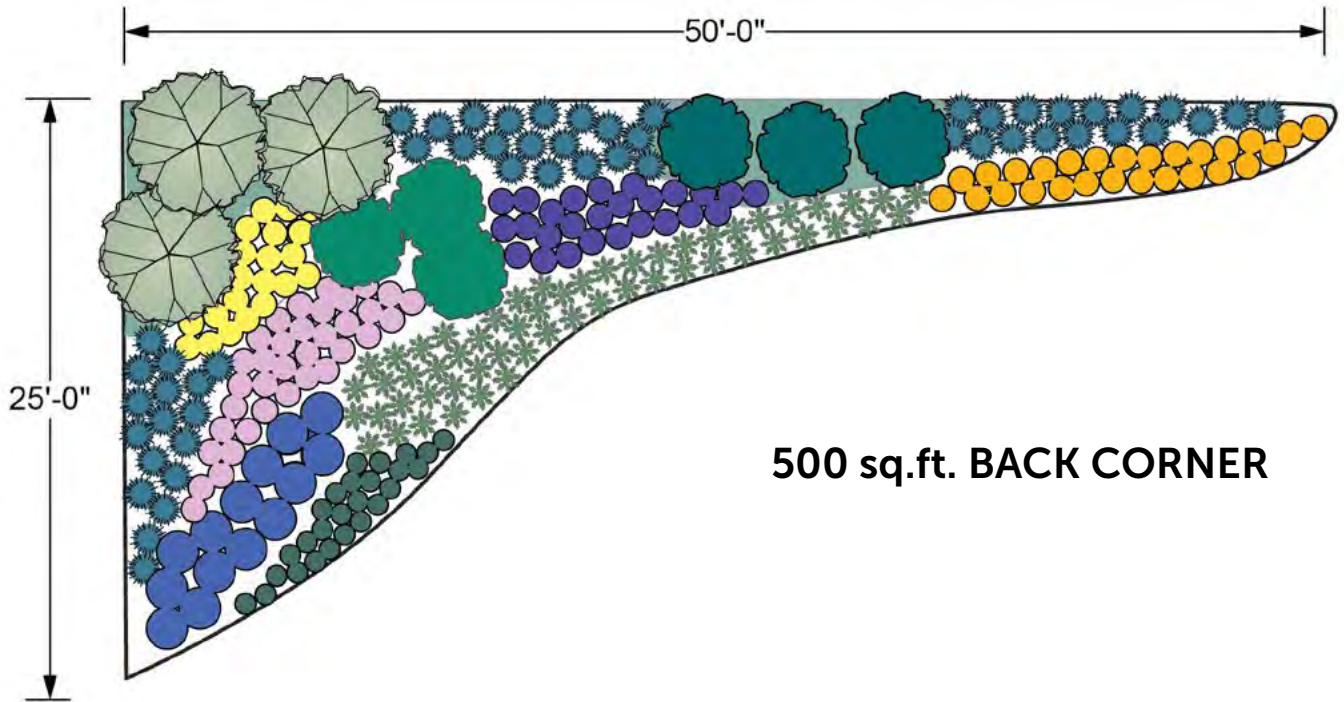
*Symphotrichum oblongifolium* 'October Skies'



## Plants for Sunny Meadow SLOPE

Plant Type	Scientific Name	Common Name	Height	Spacing	Attributes	Alternative Plant
Shrub	<i>Rhus aromatica</i> 'Gro-Low'	Fragrant Sumac	1.5-2.0'	36"	A dense, low-growing deciduous shrub with glossy green foliage leaves that can turn attractive hues of red and orange in fall. Good for slopes.	<i>Hypericum densiflorum</i> : Tall, dense perennial with bright yellow flowers.
Perennial	<i>Solidago rugosa</i> 'Fireworks'	Rough Goldenrod	2.5'-3.0'	36"	A tall, robust cultivar that has a compact habit and showy 18-inch-long arching flowering stems that bloom from late summer into fall.	<i>Physocarpus opulifolius</i> 'Nanus': This dwarf, spreading, deciduous shrub cultivar has densely-clustered sprays of pink or white flowers in late spring. Peeling bark provides winter interest. Good for erosion control on slopes.
Perennial	<i>Symphotrichum oblongifolium</i> 'October Skies'	Aromatic Aster	1.5'-2.0'	18"	An aster cultivar with low-mounding habit and a showy multitude of starry sky-blue flowers in early autumn.	<i>Symphotrichum laeve</i> 'Bluebird': This aster cultivar of medium height and attractive bluish-green foliage produces abundant, violet-blue flowers in fall.
Perennial	<i>Asclepias tuberosa</i>	Butterflyweed	1.0'-2.5'	15"	Medium-height perennial with orange flowers in early summer.	<i>Liatris microcephalla</i> : This small, upright, clump-forming perennial produces multiple terminal spikes of fluffy, deep rose-purple flower heads in summer that are highly attractive to pollinators. Neat and tidy appearance. Great border plant.
Perennial	<i>Liatris spicata</i>	Blazingstar	2.0'-4.0'	15"	Medium-height perennial with protruding purple spikes in late summer.	<i>Echinacea purpurea</i> : This perennial with showy, pollinator-attracting flowers blooms profusely for up to two months in mid to late-summer with occasional rebloom in the fall. The seed heads that follow later in the season are a food source for seed-eating birds, such as Goldfinches.
Perennial	<i>Oenothera fruticosa</i>	Sundrops	1.5'-2.5'	15"	Erect stems have terminal clusters of bright yellow flowers in late spring. Flowers last a day, but bloom in long procession.	<i>Coreopsis verticillata</i> 'Zagreb': This cultivar is a low-height rhizomatous perennial that grows in compact bushy clumps with thread-like leaves and bright yellow flowers in summer.
Perennial	<i>Rudbeckia fulgida</i>	Orange Coneflower	2.0'-3.0'	15"	Native, yellow-flowering perennial that blooms from June to October.	<i>Chrysopsis mariana</i> : This upright, fibrous-rooted, short-stoloniferous perennial provides long-season interest with cheerful, daisy-like flowers from late summer well into the fall that attract pollinators.
Perennial	<i>Eragrostis spectabilis</i>	Purple Lovegrass	1.0'-2.0'	15"	Short-statured, clumping grass with hazy reddish-purple inflorescence in fall.	<i>Sporobolus heterolepis</i> : A clump-forming, warm season, perennial grass with clusters of slender stems held above the tufted grass. In fall the foliage color turns to hues of gold.
Perennial	<i>Panicum virgatum</i> 'Shenandoah'	Switchgrass	3.0'-4.0'	18"	Medium-height grass with color interest spring through fall.	<i>Amsonia hubrichtii</i> : Offers multi-season interest with a broadly rounded growth habit and narrow, finely-textured foliage, star-like light blue flowers in spring, and golden-yellow leaf color in fall. Striking in massed plantings.
Perennial	<i>Schizachyrium scoparium</i> 'Standing Ovation'	Little Bluestem	2.0'-4.0'	18"	Medium-height, upright clumping grass of slender, flat, linear bluish leaves, turning a striking reddish-maroon in fall. Provides vertical element and winter interest.	<i>Andropogon virginicus</i> : This tall, upright, warm-season grass stands out in fall and winter with its orange-golden hue throughout winter, most effective when massed. Adaptable to poor soil and it is drought tolerant.

# 4. Shady Glade • Back Corner



500 sq.ft. BACK CORNER



*Packera aurea*















*Fothergilla* 'Mt. Airy'



*Magnolia virginiana* 'Jim Wilson' MOONGLOW

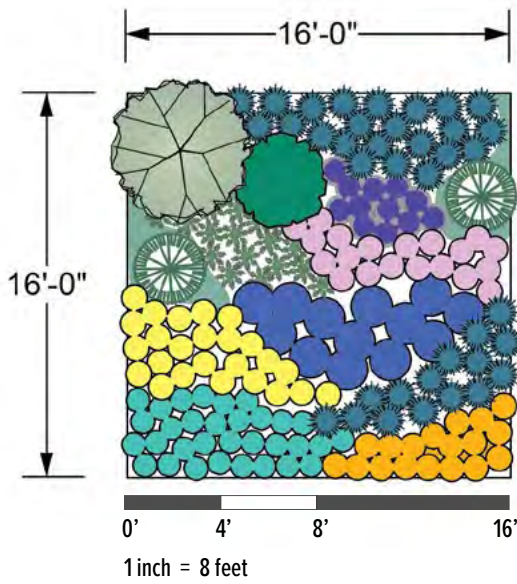
### PLANT LIST

Type	Qty.	Name
SHRUB:	 3	<i>Magnolia virginiana</i> 'Jim Wilson' MOONGLOW (Sweetbay Magnolia)
	 3	<i>Clethra alnifolia</i> 'Hummingbird' (Summersweet)
	 3	<i>Fothergilla</i> 'Mt. Airy' (Mountain Witchalder)
PERENNIALS:	 64	<i>Carex radiata</i> (Eastern Star Sedge)
	 32	<i>Carex amphibola</i> (Creek Sedge)
	 40	<i>Elymus hystrix</i> (Bottlebrush Grass)
	 32	<i>Polystichum acrostichoides</i> (Christmas Fern)
	 32	<i>Packera aurea</i> (Golden Groundsel)
	 20	<i>Zizia aurea</i> (Golden Alexanders)
	 32	<i>Chelone glabra</i> (White Turtlehead)
	 17	<i>Lobelia siphilitica</i> (Great Blue Lobelia)
	 21	<i>Symphyotrichum cordifolium</i> (Blue Woodaster)

## Plants for Shady Glade BACK CORNER













Plant Type	Scientific Name	Common Name	Height	Spacing	Attributes	Alternative Plant
Tree	<i>Magnolia virginiana</i> 'Jim Wilson' MOONGLOW	Sweetbay Magnolia	15'- 35'	48"	This cultivar has more vigorous upright growth, good cold hardiness with semi-evergreen foliage and slightly larger, fragrant white flowers in spring. It is a medium-sized tree with oval form.	<i>Viburnum dentatum</i> – Upright, multi-stemmed, deciduous shrub bearing white flowers in flat-topped corymbs in late spring, followed by blue-black, berry-like drupes which provide food for birds and wildlife.
Shrub	<i>Clethra alnifolia</i> 'Hummingbird'	Summersweet	2.0'- 4.0'	36"	Medium-height shrub with fragrant white flower spikes attracting butterflies.	<i>Ilex verticillata</i> 'Red Sprite' – A deciduous winterberry cultivar that is a large-berried, slow-growing, dwarf shrub with an upright, rounded habit. Typically grows only 2-3' tall. Requires male pollinizer.
Shrub	<i>Fothergilla</i> 'Mt. Airy'	Mountain Witchalder	3.0'- 5.0'	36"	A deciduous shrub with deep blue-green leaves that displays an attractive range of fall color. Showy, bottlebrush-like, white flowers appear before foliage emerges in spring.	<i>Itea virginica</i> 'Henry's Garnet' – Medium-height shrub with natural growth habit providing year round interest.
Perennial	<i>Carex radiata</i>	Eastern Star Sedge	1.0'- 2.0'	12"	A low-growing, finely textured, clump-forming sedge with dark green color.	<i>Carex socialis</i> – A low-growing, rhizomatous perennial sedge that forms dense tufts of fine-textured, narrow foliage. The leaves are light green and semi-evergreen.
Perennial	<i>Carex amphibola</i>	Creek Sedge	1.0'- 1.5'	15"	A robust sedge that grows in compact mounds. The narrow leaves are shiny, upright and often semi-evergreen. Most suitable for part shade conditions.	<i>Carex platyphylla</i> – Low-growing, tidy and dense, this sedge has broad, semi-evergreen blades of blue-green. Adds texture and provides good erosion control.
Perennial	<i>Elymus hystrix</i>	Bottlebrush Grass	2.5'- 3.0'	15"	A clump forming cool season grass that in summer displays pale green bottlebrush-like inflorescences.	<i>Matteuccia struthiopteris</i> – A clump-forming, upright to-arching, deciduous fern, typically growing 2-3' tall. Can spread aggressively by underground rhizomes to form dense colonies.
Perennial	<i>Polystichum acrostichoides</i>	Christmas Fern	1.0'- 2.0'	15"	Evergreen fern that grows in a fountain-like clump. Great for holding soil on moist slopes.	<i>Dryopteris marginalis</i> – Woodland fern with excellent rich brown color in autumn.
Perennial	<i>Packeria aurea</i>	Golden Groundsel	0.5'- 2.5'	15"	This low-growing perennial blooms profusely in early summer and has dense rosettes of evergreen basal foliage. Readily spreads.	<i>Sisyrinchium angustifolium</i> – Plants form low-growing upright rosettes of narrow iris-like foliage. Starry blue flowers appear in late spring or early summer for a long bloom season. Makes a good groundcover.
Perennial	<i>Zizia aurea</i>	Golden Alexanders	1.5'- 3.0'	15"	An upright perennial with showy yellow flowers from late spring into early summer.	<i>Polygonatum biflorum</i> – The graceful arching stems with dangling, cream-colored flowers in spring, followed by deep blue berries in late summer and fall add structural interest. The leaves turn a bright gold in autumn.
Perennial	<i>Chelone glabra</i>	White Turtlehead	2.0'- 3.0'	15"	Shorter height perennial with white flowers appearing in late summer to early fall.	<i>Penstemon hirsutus</i> or <i>P. laevigatus</i> – A versatile plant in varying conditions, this smaller-scale penstemon has open clusters of trumpet-shaped, lavender flowers in late spring that attract pollinators.
Perennial	<i>Lobelia siphilitica</i>	Great Blue Lobelia	2.0'- 3.0'	15"	The flower spikes of this short-lived perennial are covered in deep blue flowers from late summer to early fall, attracting pollinators and adding structural interest.	<i>Tradescantia virginiana</i> – A robust, clumping perennial with thick, fleshy roots and rhizomes, and producing small clusters of violet florets in late spring, sometimes reblooming in fall. Spreads readily.
Perennial	<i>Symphyotrichum cordifolium</i>	Blue Woodaster	2.0'- 5.0'	15"	The pale blue-to-violet flowers of this perennial bloom in large, loose clusters from late summer into fall.	<i>Phlox divaricata</i> – A semi-evergreen, mounding perennial groundcover that can gradually form colonies from short rhizomes and spreading leafy stems that root at the nodes. Loose clusters of showy pinkish-lavender or blue flowers arise in early spring.

# 5. Shady Glade • Front Yard



256 sq.ft. FRONT YARD

### PLANT LIST

Type	Qty.	Name
SHRUB:		
	1	<i>Magnolia virginiana</i> 'Jim Wilson' MOONGLOW (Sweetbay Magnolia)
	1	<i>Clethra alnifolia</i> 'Hummingbird' (Summersweet)
	2	<i>Juncus effusus</i> (Soft Rush)
PERENNIALS:		
	12	<i>Symphyotrichum cordifolium</i> (Blue Woodaster)
	24	<i>Tiarella cordifolia</i> (Foamflower)
	9	<i>Zizia aurea</i> (Golden Alexanders)
	9	<i>Lobelia siphilitica</i> (Great Blue Lobelia)
	15	<i>Packera aurea</i> (Golden Groundsel)
	15	<i>Chelone glabra</i> (White Turtlehead)
	21	<i>Polystichum acrostichoides</i> (Christmas Fern)
	32	<i>Elymus hystrix</i> (Bottlebrush Grass)
	18	<i>Carex radiata</i> (Eastern Star Sedge)



*Tiarella cordifolia*



*Lobelia siphilitica*



*Clethra alnifolia* 'Hummingbird'



*Zizia aurea*



*Chelone glabra*

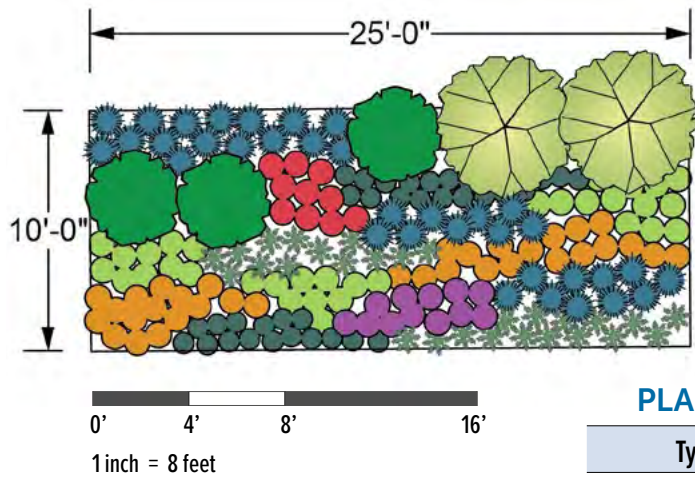


*Juncus effusus*

## Plants for Shady Glade FRONT YARD

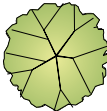









Plant Type	Scientific Name	Common Name	Height	Spacing	Attributes	Alternative Plant
Tree	<i>Magnolia virginiana</i> 'Jim Wilson' MOONGLOW	Sweetbay Magnolia	15' - 35'	48"	This cultivar has more vigorous upright growth, good cold hardiness with semi-evergreen foliage and slightly larger, fragrant white flowers in spring. It is medium-sized tree with oval form.	<i>Viburnum dentatum</i> – Upright, multi-stemmed, deciduous shrub bearing white flowers in flat-topped corymbs in late spring, followed by blue-black, berry-like drupes which provide food for birds and wildlife.
Shrub	<i>Clethra alnifolia</i> 'Hummingbird'	Summersweet	2.0' - 4.0'	36"	Medium-height shrub with fragrant white flower spikes attracting butterflies.	<i>Ilex verticillata</i> 'Red Sprite' – A deciduous winterberry cultivar that is a large-berried, slow-growing, dwarf shrub with an upright, rounded habit. Typically grows only 2-3' tall. Requires male pollinizer.
Perennial	<i>Juncus effusus</i>	Soft Rush	2.0' - 4.0'	18"	The narrow, round foliage and upright habit of this rush add an architectural element to the garden.	<i>Actaea racemosa</i> – Large, shrub-like, mature plants produce tall, wiry spires of small white, fragrant flowers in late summer to early fall that add architectural interest. Dark-leaved cultivars also available.
Perennial	<i>Symphotrichum cordifolium</i>	Blue Woodaster	2.0' - 5.0'	15"	The pale blue to violet flowers of this perennial bloom in large, loose clusters from late summer into fall.	<i>Phlox divaricata</i> – A semi-evergreen, mounding perennial groundcover that can gradually form colonies from short rhizomes and spreading leafy stems that root at the nodes. Loose clusters of showy pinkish-lavender or blue flowers arise in early spring.
Perennial	<i>Tiarella cordifolia</i>	Foamflower	0.75' - 1.0'	15"	Low-growing, spreading perennial with white puffy flowers in spring.	<i>Viola striata</i> , <i>Chrysogonum virginianum</i> – Long-lasting, creamy white flowers appear in spring above dark-green, heart-shaped leaves. Freely self-seeds to form a thick groundcover.
Perennial	<i>Zizia aurea</i>	Golden Alexanders	1.5' - 3.0'	15"	An upright perennial with showy yellow flowers from late spring into early summer.	<i>Polygonatum biflorum</i> – The graceful arching stems with dangling, cream-colored flowers in spring, followed by deep blue berries in late summer and fall add structural interest. The leaves turn a bright gold in autumn.
Perennial	<i>Lobelia siphilitica</i>	Great Blue Lobelia	2.0' - 3.0'	15"	The flower spikes of this short-lived perennial are covered in deep blue flowers from late summer to early fall, attracting pollinators and adding structural interest.	<i>Tradescantia virginiana</i> – A robust, clumping perennial with thick fleshy roots and rhizomes and producing small clusters of violet florets in late spring, sometimes reblooming in fall. Spreads readily.
Perennial	<i>Packera aurea</i>	Golden Groundsel	0.5' - 2.5'	15"	This low-growing perennial blooms profusely in early summer and has dense rosettes of evergreen basal foliage. Readily spreads.	<i>Sisyrinchium angustifolium</i> – Plants form low-growing upright rosettes of narrow iris-like foliage. Starry blue flowers appear in late spring or early summer for a long bloom season. Makes a good groundcover.
Perennial	<i>Chelone glabra</i>	White Turtlehead	2.0' - 3.0'	15"	Shorter-height perennial with white flowers appearing in late summer early fall.	<i>Penstemon hirsutus</i> or <i>P. laevigatus</i> – A versatile plant in varying conditions, this smaller-scale penstemon has open clusters of trumpet-shaped, lavender flowers in late spring, attracting pollinators.
Perennial	<i>Polystichum acrostichoides</i>	Christmas Fern	1.0' - 2.0'	15"	Evergreen fern that grows in a fountain-like clump. Great for holding soil on moist slopes.	<i>Dryopteris marginalis</i> – Woodland fern with excellent rich brown color in Autumn.
Perennial	<i>Elymus hystrix</i>	Bottlebrush Grass	2.5' - 3.0'	15"	A clump-forming cool season grass that in summer displays pale green bottlebrush-like inflorescences.	<i>Matteuccia struthiopteris</i> – A clump-forming, upright to-arching, deciduous fern, typically grows 2-3' tall. Can spread aggressively by underground rhizomes to form dense colonies.
Perennial	<i>Carex radiata</i>	Eastern Star Sedge	1.0' - 2.0'	12"	A low-growing, finely textured, clump-forming sedge with dark green color.	<i>Carex socialis</i> – A low-growing, rhizomatous perennial sedge that forms dense tufts of fine-textured, narrow foliage. The leaves are light green and semi-evergreen.

# 6. Shady Glade • Slope



250 sq. ft. SLOPE

**PLANT LIST**

Type	Qty.	Name
SHRUB:		
	2	<i>Lindera benzoin</i> (Spicebush)
	3	<i>Hydrangea arborescens</i> (Smooth Hydrangea)
PERENNIALS:		
	27	<i>Eurybia divaricata</i> (White Woodaster)
	13	<i>Monarda didyma</i> (Beebalm)
	12	<i>Conoclinium coelestinum</i> (Blue Mistflower)
	25	<i>Solidago flexicaulis</i> (Broadleaf Goldenrod)
	32	<i>Carex amphibola</i> (Creek Sedge)
	25	<i>Polystichum acrostichoides</i> (Christmas Fern)
	32	<i>Elymus hystrix</i> (Bottlebrush Grass)
	32	<i>Carex radiata</i> (Eastern Star Sedge)



*Lindera benzoin*



*Hydrangea arborescens*



*Monarda didyma*



*Polystichum acrostichoides*



*Carex amphibola*



*Eurybia divaricata*

## Plants for Shady Glade SLOPE

Plant Type	Scientific Name	Common Name	Height	Spacing	Attributes	Alternative Plant
Shrub	<i>Lindera benzoin</i>	Spicebush	6.0' - 8.0'	48"	Larger deciduous shrub providing many yellow flowers in spring.	<i>Hamamelis virginiana</i> – A fall-blooming, deciduous shrub or small tree with stem-hugging clusters of fragrant bright yellow flowers that appear along the branches in late fall to early winter. Leaves turn shades of yellow in fall.
Shrub	<i>Hydrangea arborescens</i>	Smooth Hydrangea	3.0' - 5.0'	36"	Medium-height shrub which produces large white flowers in late spring.	<i>Rhododendron periclymenoides</i> – Taller deciduous shrub with many showy blooms in spring.
Perennial	<i>Eurybia divaricata</i>	White Woodaster	1.0' - 2.5'	15"	Shorter perennial with white daisy flowers appearing August to October.	<i>Polemonium reptans</i> – Spreads by rhizomatous roots and self-seeding to create attractive mounds of glossy foliage. Topped by large clusters of fragrant pinkish-purple flowers throughout early summer.
Perennial	<i>Monarda didyma</i>	Beebalm	2.0' - 4.0'	15"	A coarse, clump-forming perennial with tubular, bright scarlet-red flowers crowded into dense, terminal flowerheads during the summer. Attractive to pollinators and hummingbirds.	<i>Phlox maculata</i> – Spreads by rhizomatous roots and self-seeding to create attractive mounds of glossy foliage. Topped by large clusters of fragrant pinkish-purple flowers throughout early summer.
Perennial	<i>Conoclinium coelestinum</i>	Blue Mistflower	1.5' - 3.0'	15"	Late summer to fall-blooming perennial with purple-blue flowers attractive to butterflies. Can spread aggressively by rhizomes and self-seeding.	<i>Pycnanthemum muticum</i> – An aromatic, upright, branching perennial of compact growth and silvery bracts that expands into colonies from shallow rhizomes. Plants are topped by dense rounded clusters of tiny white-to-lavender tubular flowers in summer, highly attractive to pollinators.
Perennial	<i>Solidago flexicaulis</i>	Broadleaf Goldenrod	1.0' - 3.0'	15"	The small yellow flowers of this perennial appear from late summer to early fall in a cluster near the top of the plant. Attractive to pollinators.	<i>Solidago caesia</i> – A clumping perennial with graceful arching stems covered with hundreds of small yellow flowers from late summer into fall. Attractive to pollinators.
Perennial	<i>Carex amphibola</i>	Creek Sedge	1.0'-1.5'	15"	A robust sedge that grows in compact mounds. The narrow leaves are shiny, upright and often semi-evergreen. Most suitable for part shade conditions.	<i>Carex platyphylla</i> – Low-growing, tidy and dense, this sedge has broad, semi-evergreen blades of blue-green. Adds texture and provides good erosion control.
Perennial	<i>Polystichum acrostichoides</i>	Christmas Fern	1.0'-2.0'	15"	Evergreen fern that grows in a fountain-like clump. Great for holding soil on moist slopes.	<i>Dryopteris marginalis</i> – Woodland fern with excellent rich brown color in Autumn.
Perennial	<i>Elymus hystrix</i>	Bottlebrush Grass	2.5'-3.0'	15"	A clump forming cool-season grass that in summer displays pale green bottlebrush-like inflorescences.	<i>Matteuccia struthiopteris</i> – A clump-forming, upright to-arching, deciduous fern, typically grows 2-3' tall. Can spread aggressively by underground rhizomes to form dense colonies.
Perennial	<i>Carex radiata</i>	Eastern Star Sedge	1.0'-2.0'	12"	A low-growing, finely textured, clump-forming sedge with dark green color.	<i>Carex socialis</i> – A low-growing, rhizomatous perennial sedge that forms dense tufts of fine-textured, narrow foliage. The leaves are light green and semi-evergreen.

# Plant Index



*Asclepias tuberosa* (plan 1,2,3)



*Baptisia* 'Purple Smoke' (plan 1,2)



*Carex amphibola* (plan 4,6)



*Carex radiata* (plan 4,5,6)



*Chelone glabra* (plan 4,5)



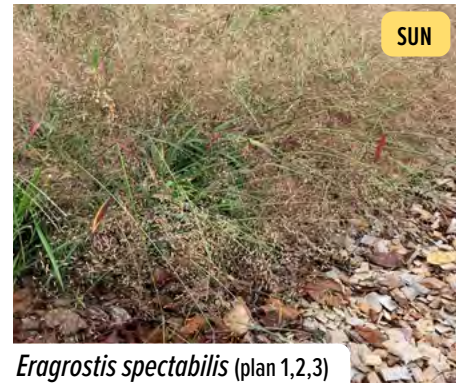
*Clethra alnifolia*  
'Hummingbird' (plan 4,5)



*Conoclinium coelestinum* (plan 6)



*Elymus hystrix* (plan 4,5,6)



*Eragrostis spectabilis* (plan 1,2,3)



*Eurybia divaricata* (plan 6)



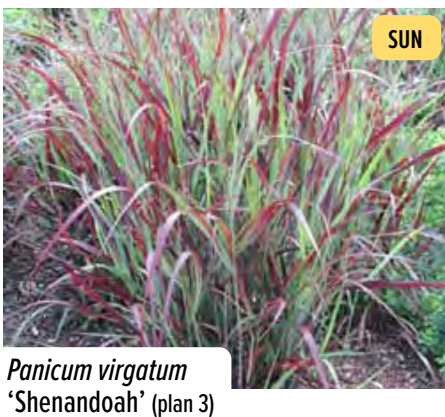
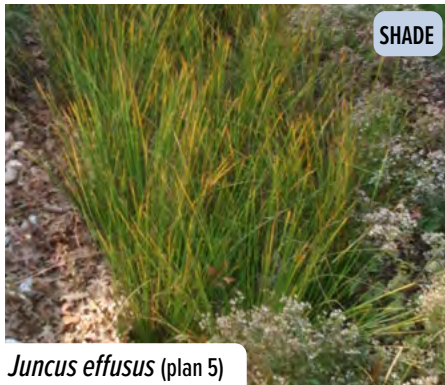
*Fothergilla* 'Mt. Airy' (plan 4)



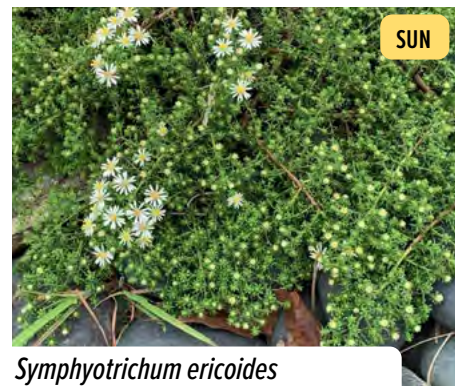
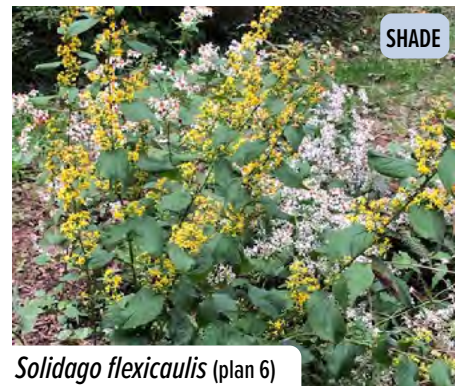
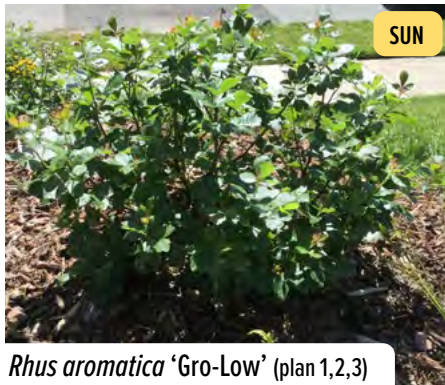
*Hydrangea arborescens* (plan 6)



# Plant Index



# Plant Index







# RainScapes

Dept. of Environmental Protection  
Montgomery County, Maryland



DEPARTMENT OF  
**ENVIRONMENTAL  
PROTECTION**  
MONTGOMERY COUNTY • MARYLAND