

WHEATON LIBRARY + COMMUNITY RECREATION CENTER



COMMUNITY MEETING

OCTOBER 26, 2015



OVERVIEW OF SITE AND PROGRAM



AERIAL VIEW OF EXISTING SITE

AERIAL VIEW OF EXISTING SITE



INPUT FROM COMMUNITY MEETINGS:

SITE	PROGRAMMING	ARCHITECTURE
Green Space / Playground/ Garden	State of Art Technology	Lots of Light
Plenty of Free Parking	Café	Open Plan / Clear circulation / Flexibility
Control traffic - no cut throughs	Diverse Programming / More Computers	Best Value for Money
Safe environment	Attract Teenagers/Youth/Families	Inspirational/ Gateway Architecture
Sustainable /Green Building	Gathering Space for the whole Community	Energy Efficient
Taxpayer money going directly to the Community	Separate Noisy / Quiet	On Time/ On Budget

GUIDING PRINCIPLES

- **Design Inspiring Gateway Architecture** that **welcomes everyone** and celebrates the **Diversity** of Wheaton.
- **Provide Inviting / Light-filled / Open / Flexible / Safe** Environments
- **Create Gathering Spaces** that attract Community members of **all Ages** and provide access to **Technology** and **Diverse Programming**.
- **Encourage interaction** between Library + Rec Center users while separating **Noisy/Quiet** with **Clear** circulation paths.
- **Design High Performance, Environmentally Friendly** building and site, maximize use of taxpayers money.
- **Maximize Green Space on Site** while providing plenty of **Parking** and clear /controlled / safe Site Circulation.



PROGRAM ELEMENTS ON THE SITE

Wheaton Library + Community Recreation Center – Community Meeting - 10.26.15

© Grimm + Parker Architects 2015. All Rights Reserved





TREE IMPROVED GREEN SPACE





AERIAL VIEW FROM SOUTHWEST

Wheaton Library + Community Recreation Center – Community Meeting - 10.26.15

© Grimm + Parker Architects 2015. All Rights Reserved



G+P



AERIAL VIEW FROM GEORGIA AVENUE LOOKING SOUTH



AERIAL VIEW AT ARCOLA AVENUE



AERIAL VIEW FROM NORTHEAST

Wheaton Library + Community Recreation Center – Community Meeting - 10.26.15

© Grimm + Parker Architects 2015. All Rights Reserved

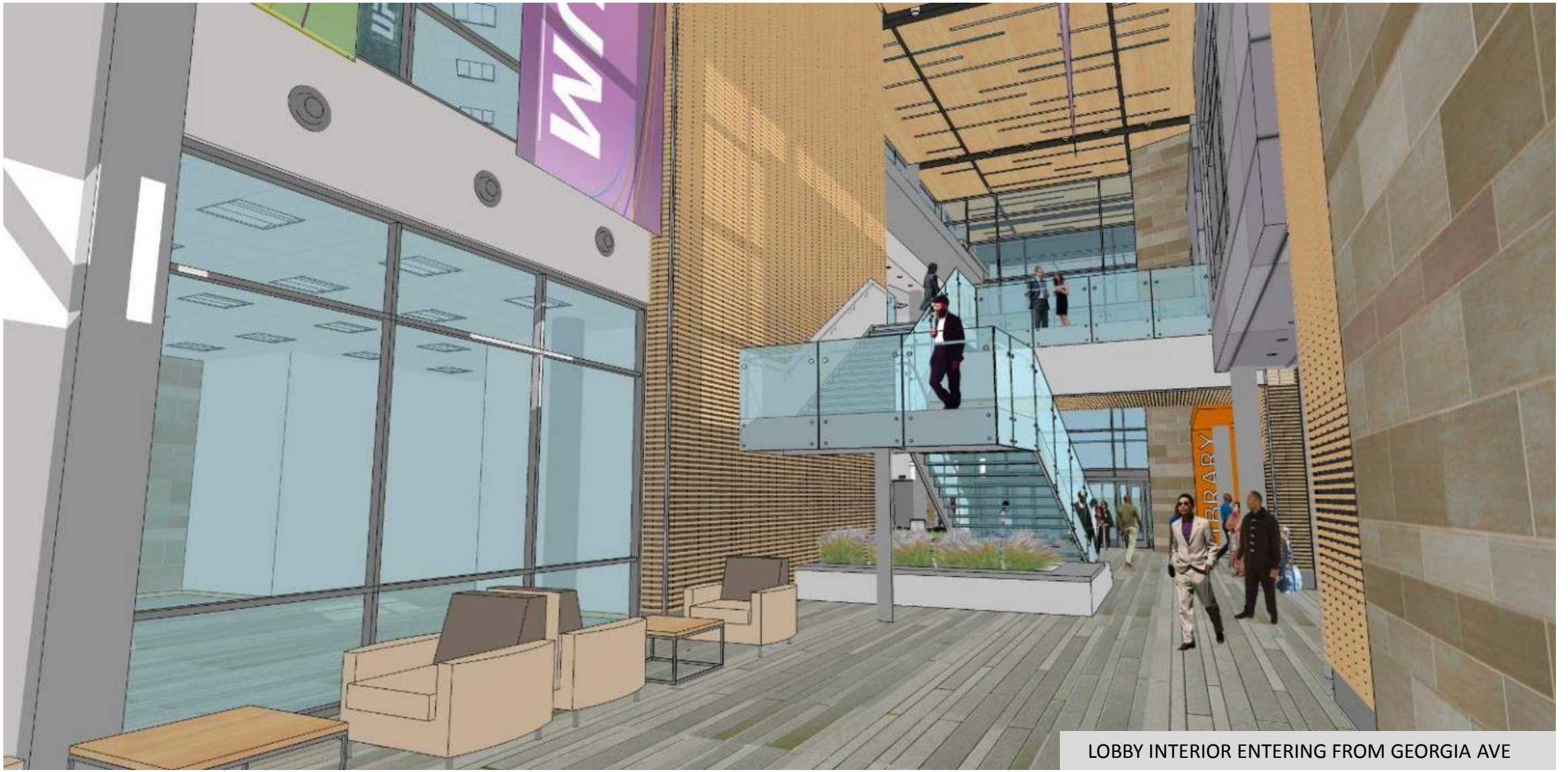




LOBBY INTERIOR ENTERING FROM DROP-OFF



LOBBY INTERIOR FROM ELEVATORS



LOBBY INTERIOR ENTERING FROM GEORGIA AVE



SECOND FLOOR LOOKING TOWARD RECREATION DESK



LOBBY INTERIOR VIEW FROM CORRIDOR TO BOOKSTORE / GYM



INTERIOR VIEWS OF LIBRARY

Design High Performance, Environmentally Friendly building and site, maximize use of taxpayers money.



LEED SILVER CERTIFICATION (MINIMUM)



COMPACT BUILDING FOOTPRINT = LESS ENVIRONMENTAL IMPACT AND EFFICIENT BUILDING ENVELOPE



NATURAL DAYLIGHT HARVESTING WITH PROPER GLARE CONTROLS



HIGH PERFORMANCE MECHANICAL AND LIGHTING SYSTEMS INCLUDING LED LIGHTS, CONTROLS, AND SENSORS



VEGETATIVE (PLANTED) ROOF AREAS FOR STORMWATER MANAGEMENT



REGIONAL AND RECYCLED MATERIALS THAT ARE HEALTHY AND LOW VOC



FUTURE PV PANELS ON ROOFS FOR RENEWABLE ENERGY



SCHEDULE

Construction Document (CD) Phase:

- Early February, 2016 Bid Set completed
- Approximately March 28, 2016 Library and Recreation Center existing building – Closing
- April – June 2016 – Early Site work on New Hermitage Road, etc.

Construction Phase:

- summer 2016 – summer 2018

The End, Thank You