

WHEATON LIBRARY + COMMUNITY RECREATION CENTER



DESIGN UPDATE COMMUNITY MEETING

SEPTEMBER 21, 2015





MEETING AGENDA

- Schedule Update
- Review of Guiding Principles
- Overview of Site and Program
- Overview of Design Response



SCHEDULE UPDATE

Design Development (DD) Phase Recap:

- Ended July 27th, during August – G+P met with DGS, MCRD, and MCPL to review their comments on DD Submission
- Project cost estimate came in on budget

Construction Document (CD) Phase:

- 9/21/15 Community Presentation at Wheaton Rescue Squad
- Early February, 2016 Bid Set completed
- Approximately March 28, 2015 Library and Recreation Center existing building – Closing
- April – June 2015 – Early Site work on New Hermitage Road, etc.

INPUT FROM COMMUNITY MEETINGS:

SITE	PROGRAMMING	ARCHITECTURE
Green Space / Playground/ Garden	State of Art Technology	Lots of Light
Plenty of Free Parking	Café	Open Plan / Clear circulation / Flexibility
Control traffic - no cut throughs	Diverse Programming / More Computers	Best Value for Money
Safe environment	Attract Teenagers/Youth/Families	Inspirational/ Gateway Architecture
Sustainable /Green Building	Gathering Space for the whole Community	Energy Efficient
Taxpayer money going directly to the Community	Separate Noisy / Quiet	On Time/ On Budget

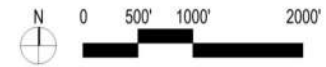
GUIDING PRINCIPLES

- **Design Inspiring Gateway Architecture** that **welcomes everyone** and celebrates the **Diversity** of Wheaton.
- **Provide Inviting / Light-filled / Open / Flexible / Safe** Environments
- **Create Gathering Spaces** that attract Community members of **all Ages** and provide access to **Technology** and **Diverse Programming**.
- **Encourage interaction** between Library + Rec Center users while separating **Noisy/Quiet** with **Clear** circulation paths.
- **Design High Performance, Environmentally Friendly** building and site, maximize use of taxpayers money.
- **Maximize Green Space on Site** while providing plenty of **Parking** and clear /controlled / safe Site Circulation.

OVERVIEW OF SITE AND PROGRAM



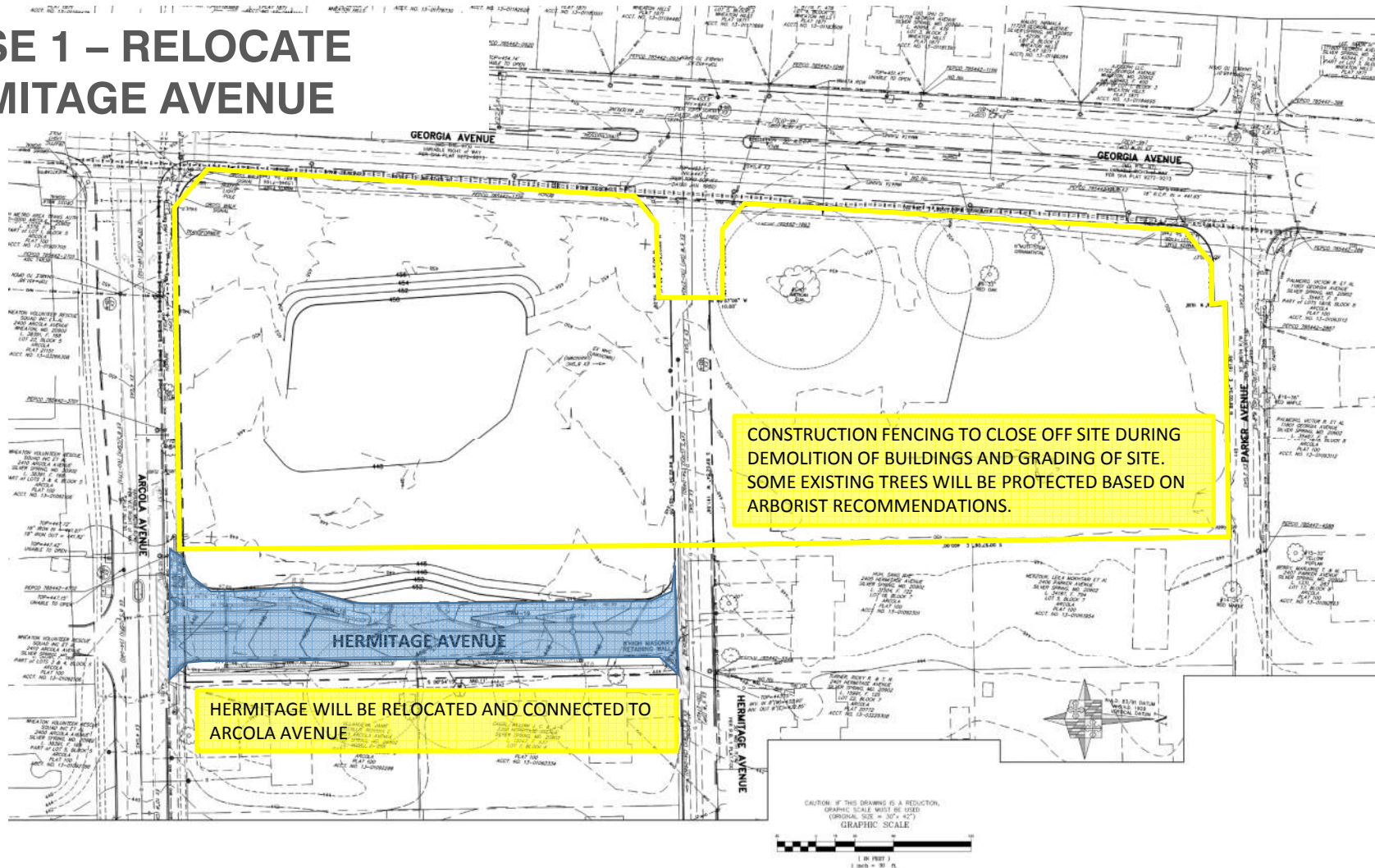
AERIAL VIEW OF EXISTING SITE



AERIAL VIEW OF EXISTING SITE



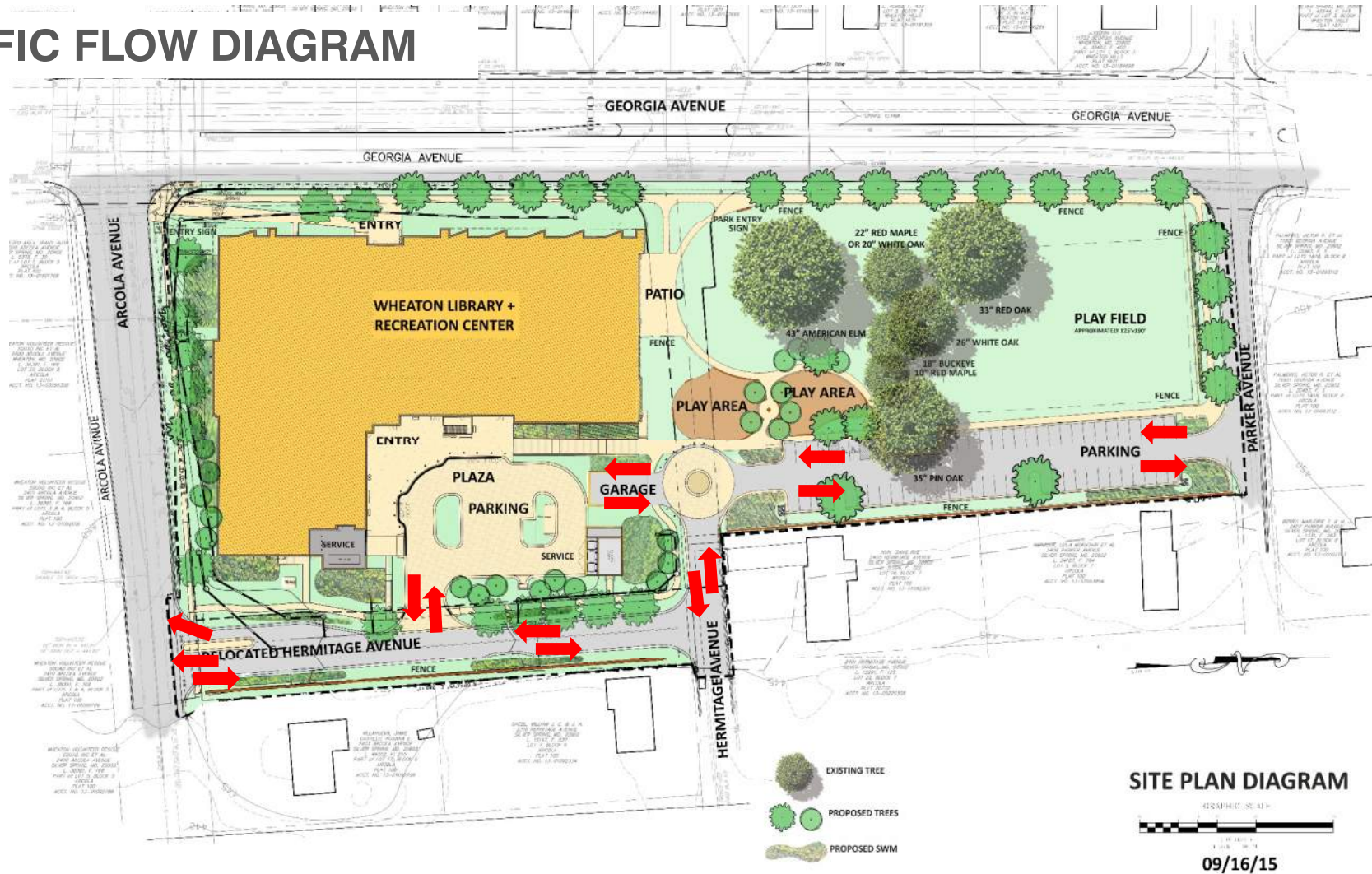
PHASE 1 – RELOCATE HERMITAGE AVENUE



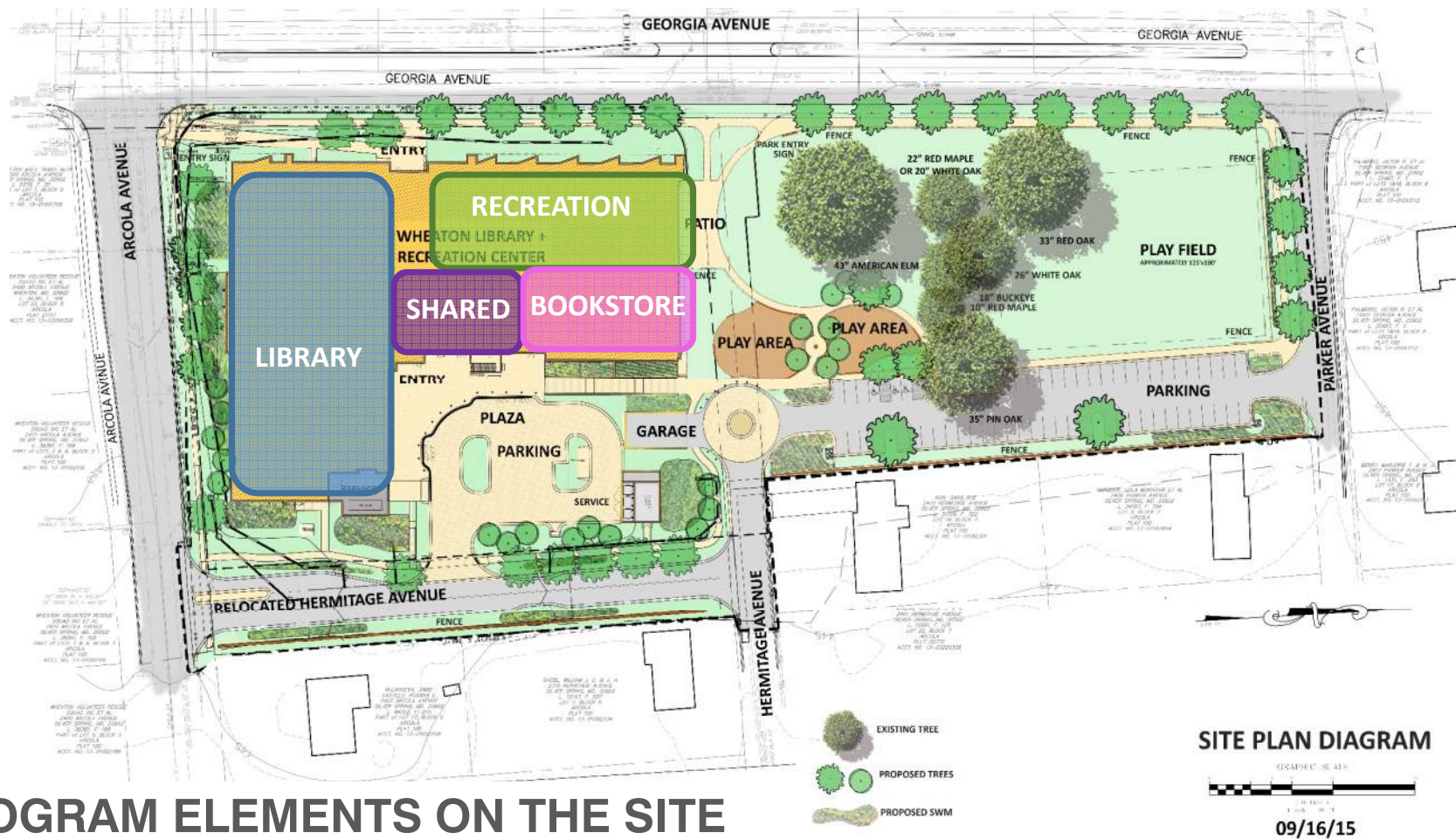
PHASE 2 – NEW FACILITY AND SITE PLAN DIAGRAM



TRAFFIC FLOW DIAGRAM

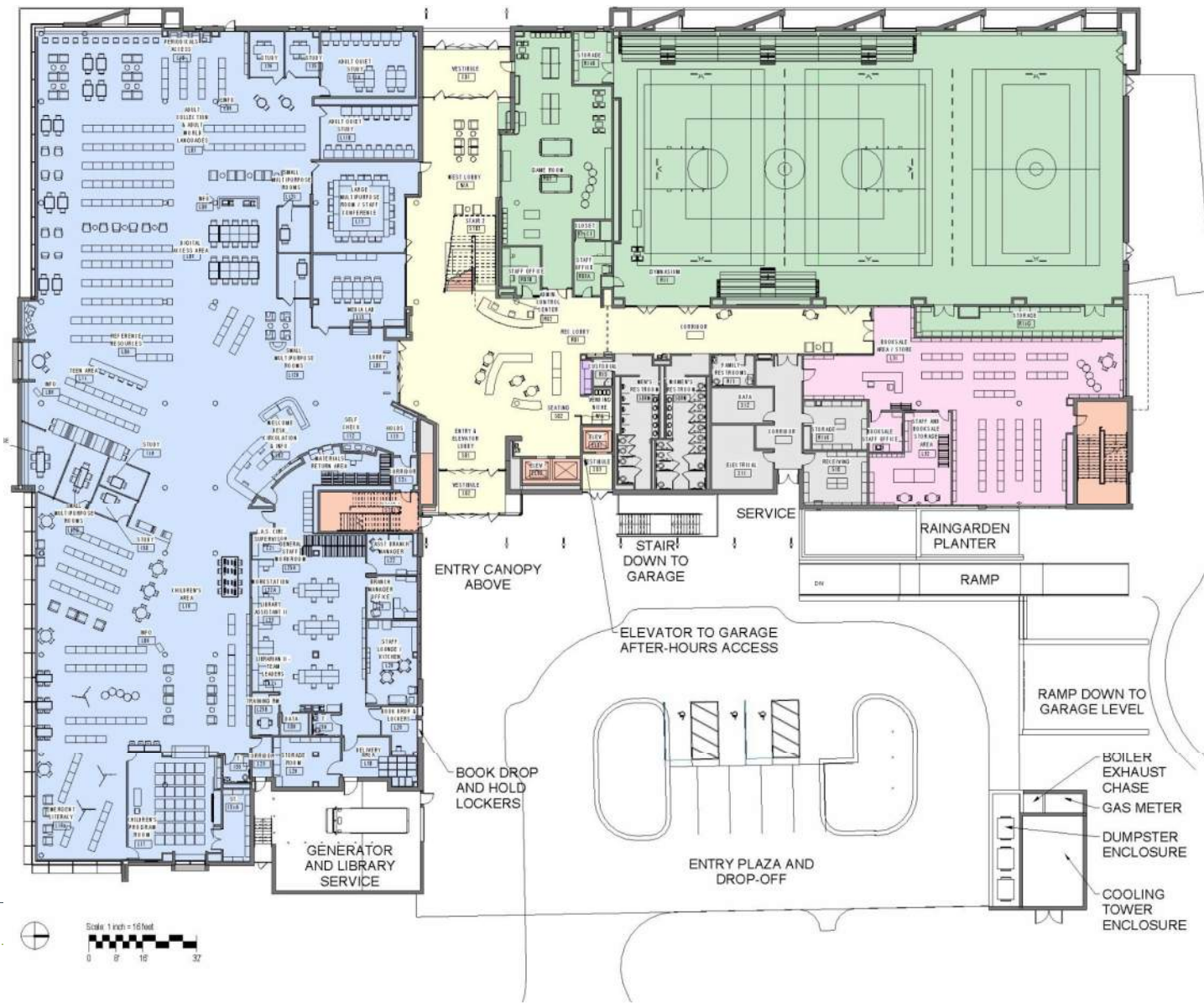


Design Response Overview



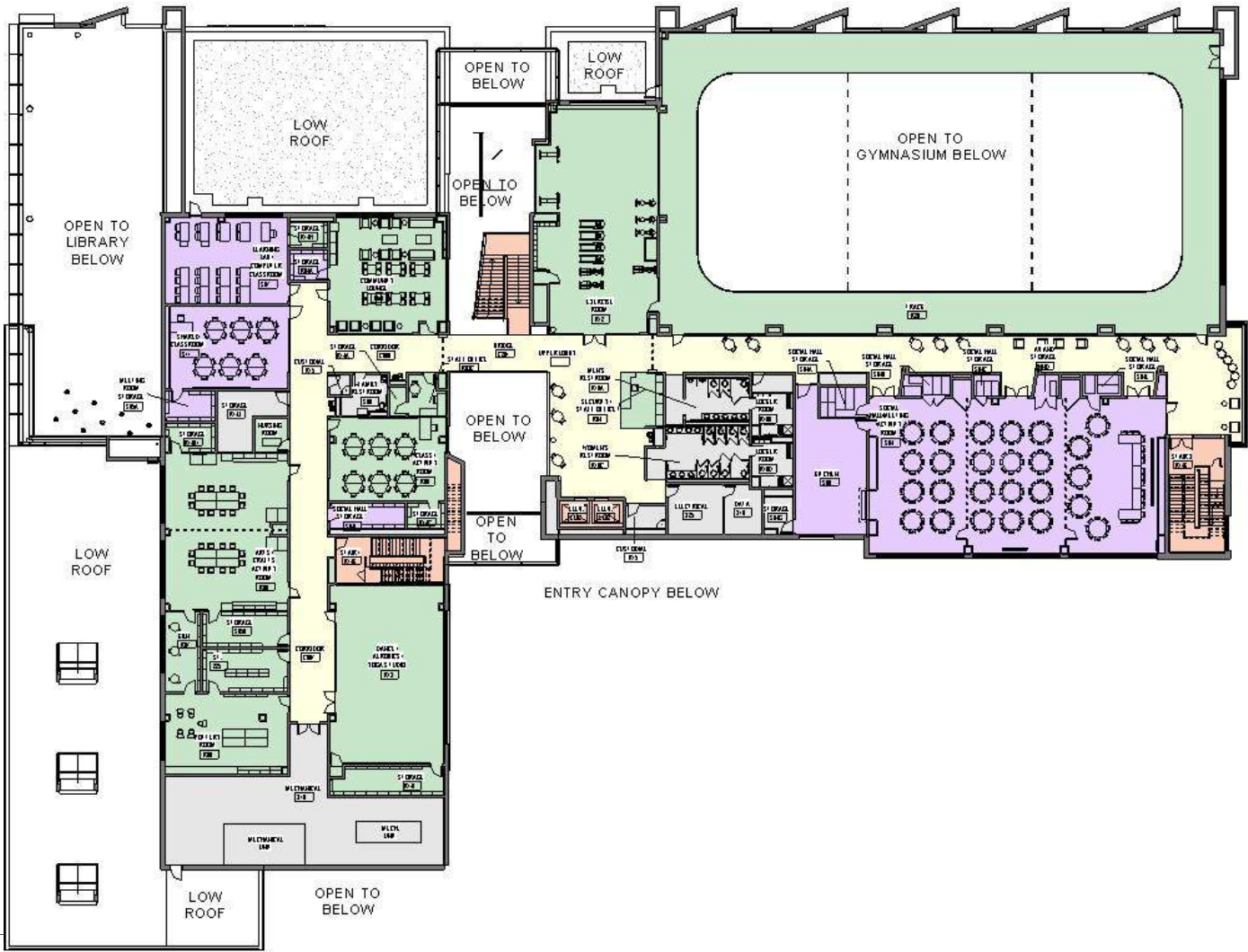
FIRST LEVEL PLAN

- LIBRARY
- COMMUNITY RECREATION CENTER
- USED BOOKSTORE
- UTILITY AND STORAGE
- STAIRS AND ELEVATORS
- CIRCULATION



SECOND LEVEL PLAN

- LIBRARY
- COMMUNITY RECREATION CENTER
- USED BOOKSTORE
- SHARED SPACES – SOCIAL HALL, COMPUTER LAB, CLASSROOM, KITCHEN
- UTILITY AND STORAGE
- STAIRS AND ELEVATORS
- CIRCULATION

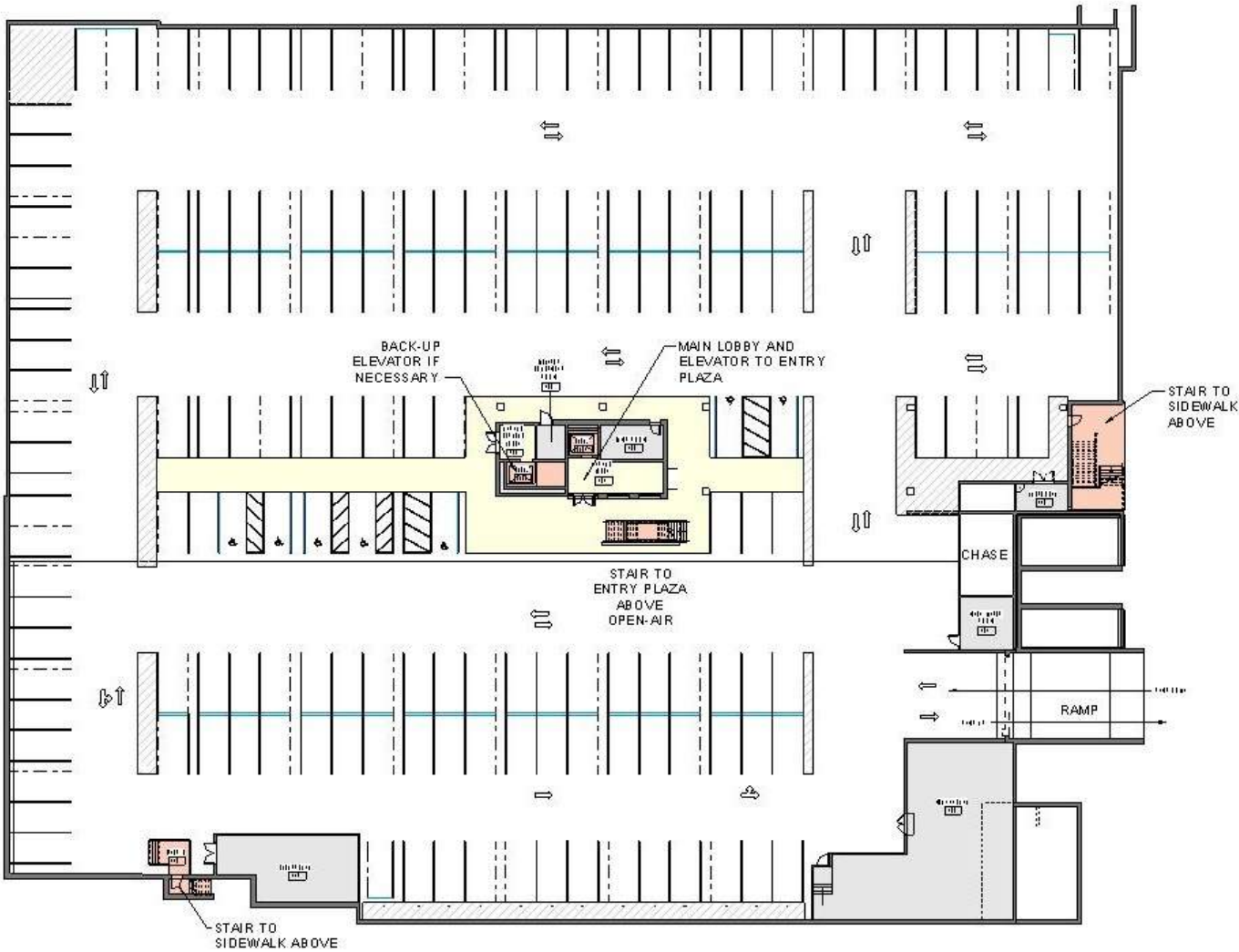


Wheaton Library + Community Recreation Center
© Grimm + Parker Architects 2015. All Rights Reserved



GARAGE LEVEL PLAN

- UTILITY AND STORAGE
- STAIRS AND ELEVATORS
- CIRCULATION







AERIAL VIEW FROM SOUTHWEST



Wheaton Library + Community Recreation Center – Community Presentation - 09.21.15
© Grimm + Parker Architects 2015. All Rights Reserved



AERIAL VIEW AT ARCOLA AVENUE



AERIAL VIEW FROM NORTHEAST





Wheaton Library + Community Recreation Center – Community Presentation - 09.21.15
© Grimm + Parker Architects 2015. All Rights Reserved



LOBBY INTERIOR FROM ELEVATORS



LOBBY INTERIOR ENTERING FROM GEORGIA AVE



SECOND FLOOR LOOKING TOWARD RECREATION DESK





LIBRARY INTERIOR – IN PROGRESS



VIEWS OF GYMNASIUM

Design High Performance, Environmentally Friendly building and site, maximize use of taxpayers money.



LEED SILVER CERTIFICATION (MINIMUM)



NATURAL DAYLIGHT HARVESTING WITH PROPER GLARE CONTROLS



VEGETATIVE (PLANTED) ROOF AREAS FOR STORMWATER MANAGEMENT



FUTURE PV PANELS ON ROOFS FOR RENEWABLE ENERGY



COMPACT BUILDING FOOTPRINT = LESS ENVIRONMENTAL IMPACT AND EFFICIENT BUILDING ENVELOPE



HIGH PERFORMANCE MECHANICAL AND LIGHTING SYSTEMS INCLUDING LED LIGHTS, CONTROLS, AND SENSORS



REGIONAL AND RECYCLED MATERIALS THAT ARE HEALTHY AND LOW VOC



Questions?

For More Information and Comments, visit the Montgomery County Neighborhood Projects Page:

<http://www.montgomerycountymd.gov/DGS-BDC/MMC/361202.html>

The screenshot displays the Montgomery County Department of General Services (DGS) website. The header includes navigation links for Home, Alerts, Translate, and a search bar. The main navigation bar lists Residents, Businesses, Government, Departments, Online Services, and MC311. The left sidebar contains a menu for DGS (+) with links to Building Design & Construction Home, Neighborhood Projects, Green Building (+), Building Performance (+), and Public-Private Projects (+). The main content area is titled "Department Of General Services" and "Division of Building Design & Construction". It features a banner for the "Wheaton Library and Community Recreation Center" project. Below the banner, there is a location pin icon indicating the address: 11701 Georgia Ave., Wheaton, MD 20902. Two photographs of the building are shown. A yellow box contains a feedback request: "Your opinion is important to us, and we value your feedback. Please share your comments on the Wheaton Library and Community Recreation Center design by contacting us." The "Project Team" section lists the Architect (Grimm + Parker), Civil Engineer (Adtek), MEP (Gipe Associates), and Structural Engineer (Columbia Engineering, Inc.). The "Montgomery County Government Department of General Services" section lists the Project Manager (Anjali Gulati) and Team Leader (Frank Roberts). At the bottom, there is a "Status" tab with a "Description" sub-tab. The "Current Phase: Design Development" section states that the architect, Grimm + Parker, has completed the Design Development phase and currently the submission is being reviewed by DGS and the user departments. Mandatory Referral submission documents have been submitted to MNCPPC. This project will be constructed in 2 phases. Phase 1 - Early site package to include building demolition and utilities. Phase 2 - Building construction.