

Performance space

Largest public assembly space in the building

Flexibility for a variety of activities:

- Arts groups and non-arts organizations
- theater productions, dance performances, concerts, recitals, amplified music, lectures, film screenings, and special events

May be used as a function space:

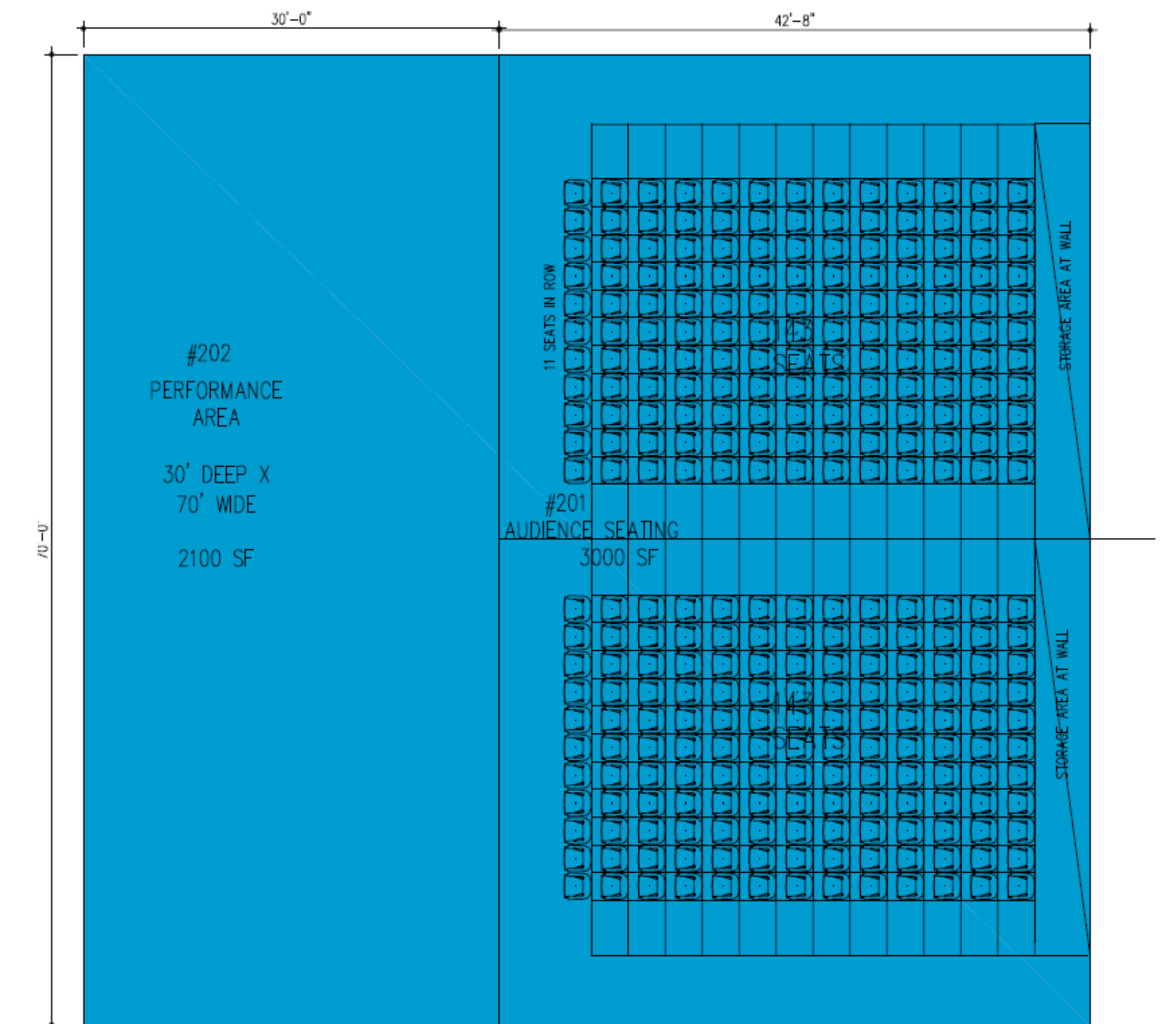
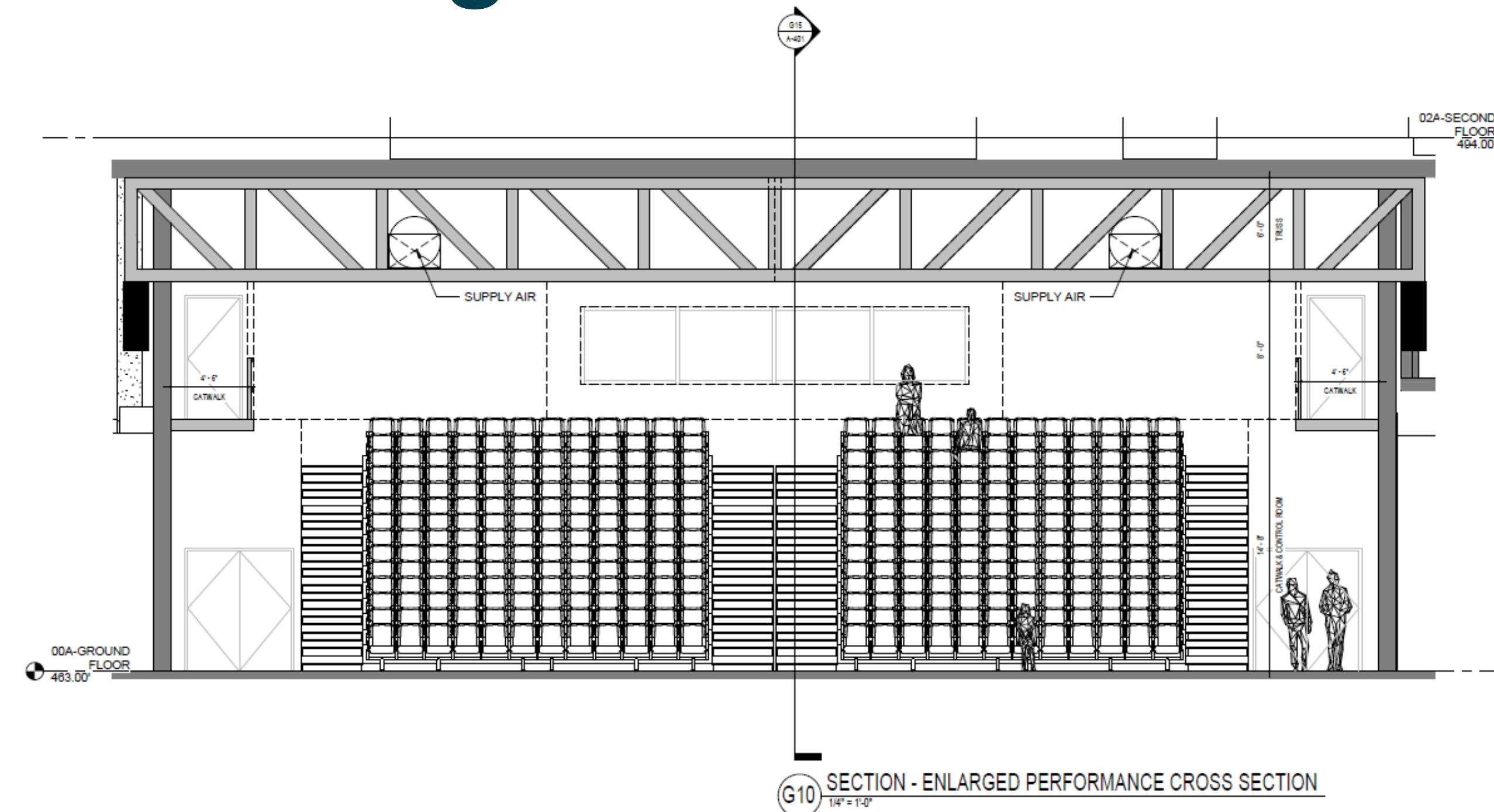
- weddings, private parties, and other non-performance events.
- on-site catering kitchen

Various seating configurations

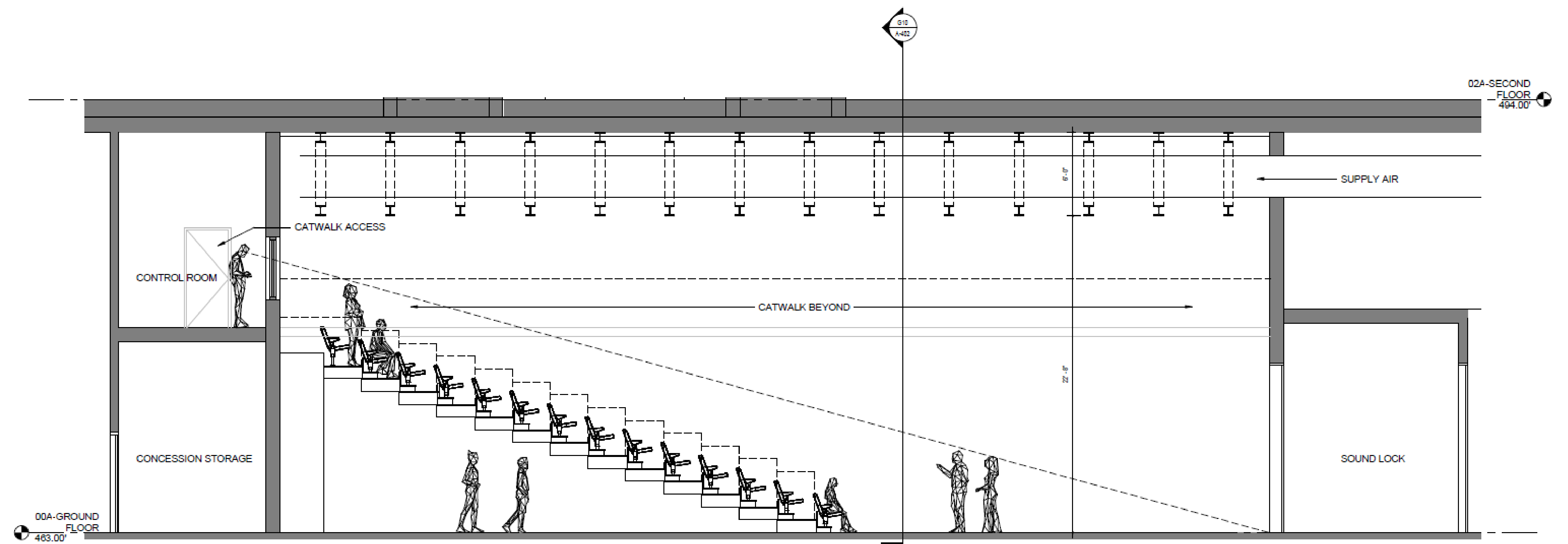
- 150 – 300 seats

Support spaces shared with studio theatre

- Control room
- Dressing rooms (3 rooms, 4 people each)
- Green room/performer lounge
- Stage manager office
- Wardrobe/laundry
- Storage
- Dimmer / LED & sound rack rooms



A200 PERFORMANCE SPACES 5,100 SF



Studio theatre

Rehearsal room or smaller performance space

Flexibility for a variety of activities:

- Staged readings
- Guest speakers
- Meetings
- Rehearsals

May be used as a teaching space:

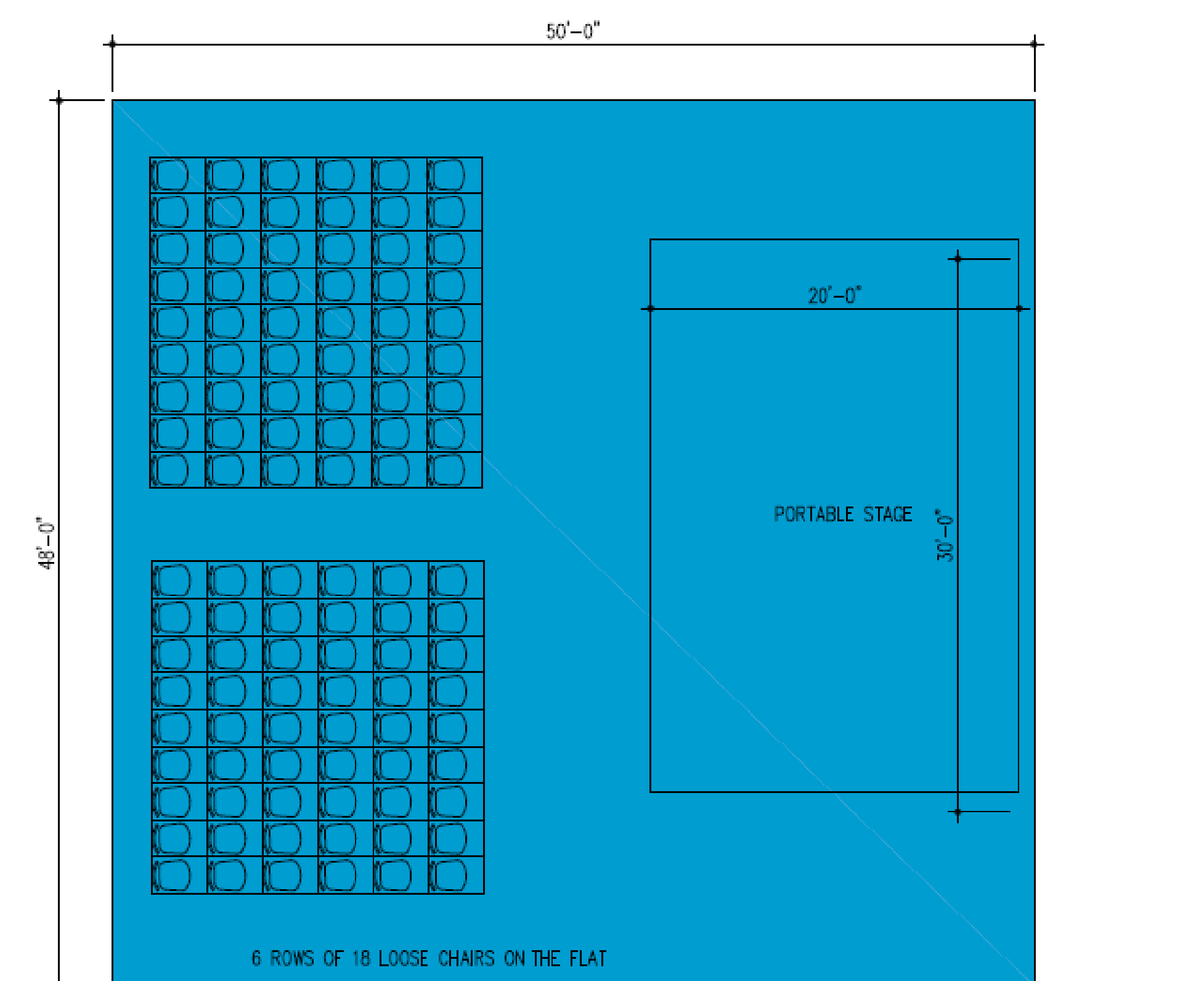
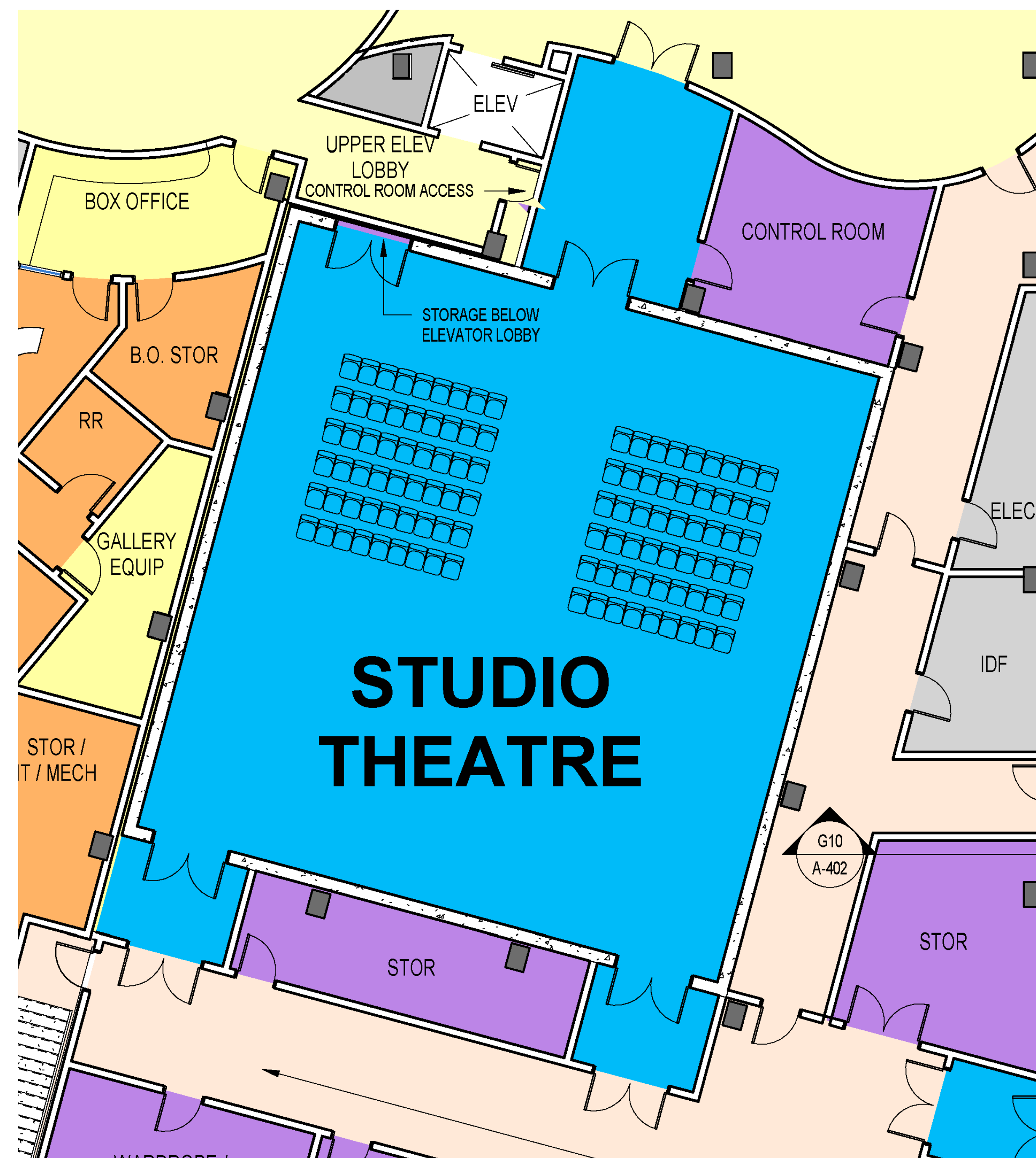
- Especially suited for dance or theater classes
- Ideally, flooring would support dance instruction, temporary or otherwise

Various seating configurations

- Approximately 100 loose chairs

Support spaces

- Control room
- Dimmer / amp rack room



#401 PERFORMANCE SPACE 2400 SF - SEATING OPTIONS
A400 STUDIO THEATRE 2,400 SF

Classroom/studio/maker spaces

Two spaces for workshops and art-making

Flexibility for a variety of activities:

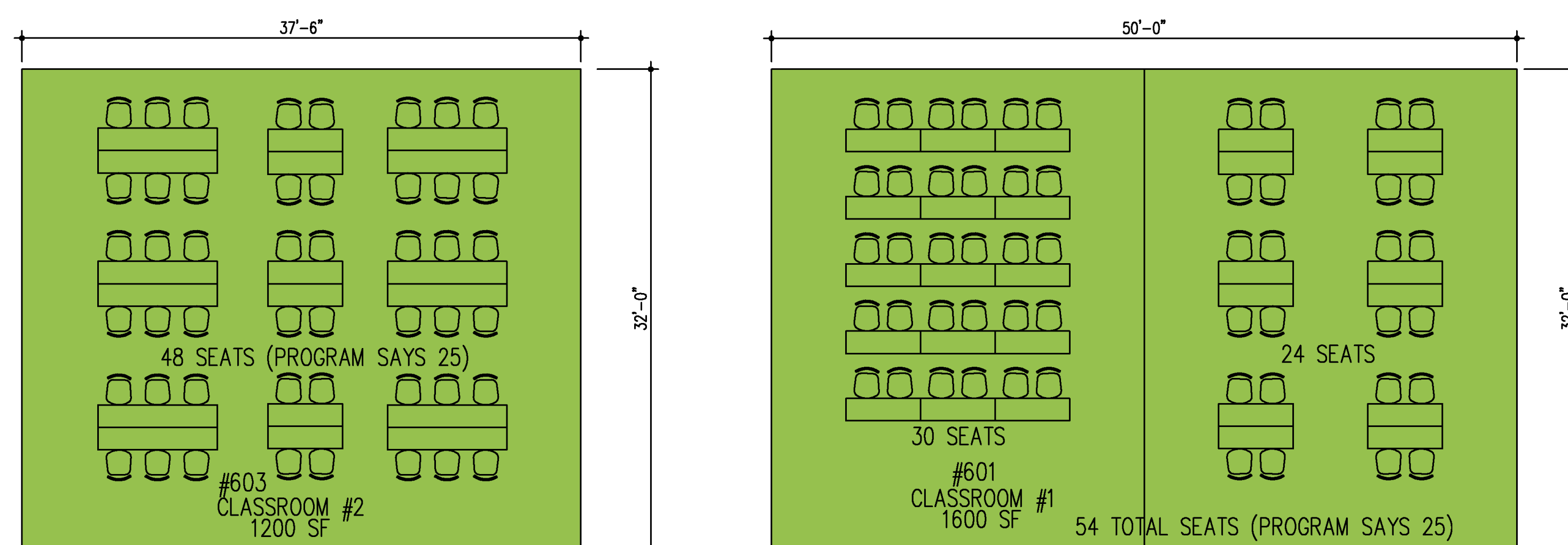
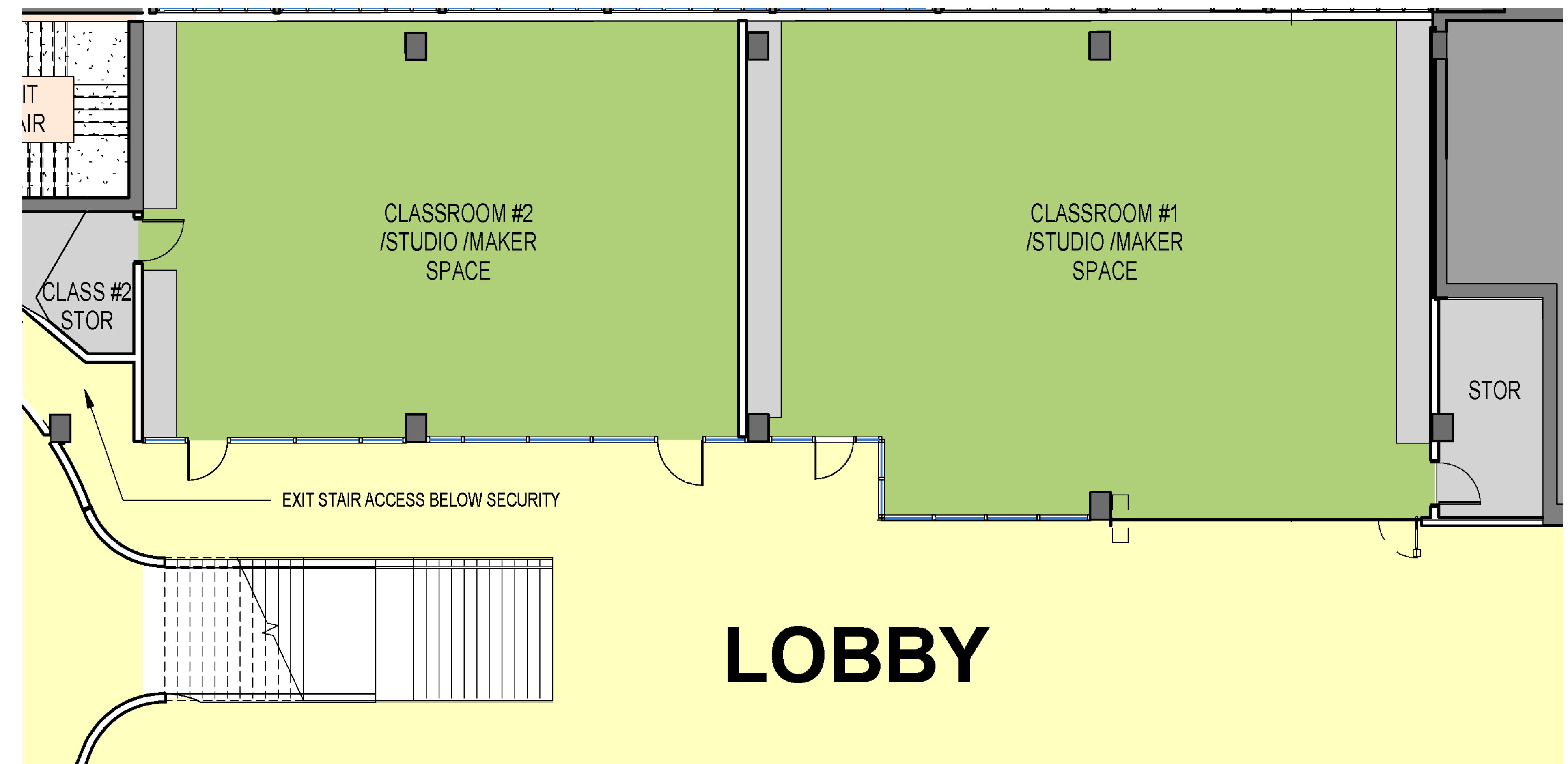
- Visual-art making
- Gallery shows
- Workshops / classes
- Small meetings

Various capabilities:

- Loose chairs & tables
- Technology for media presentation
- Paint sink and drain

Support spaces

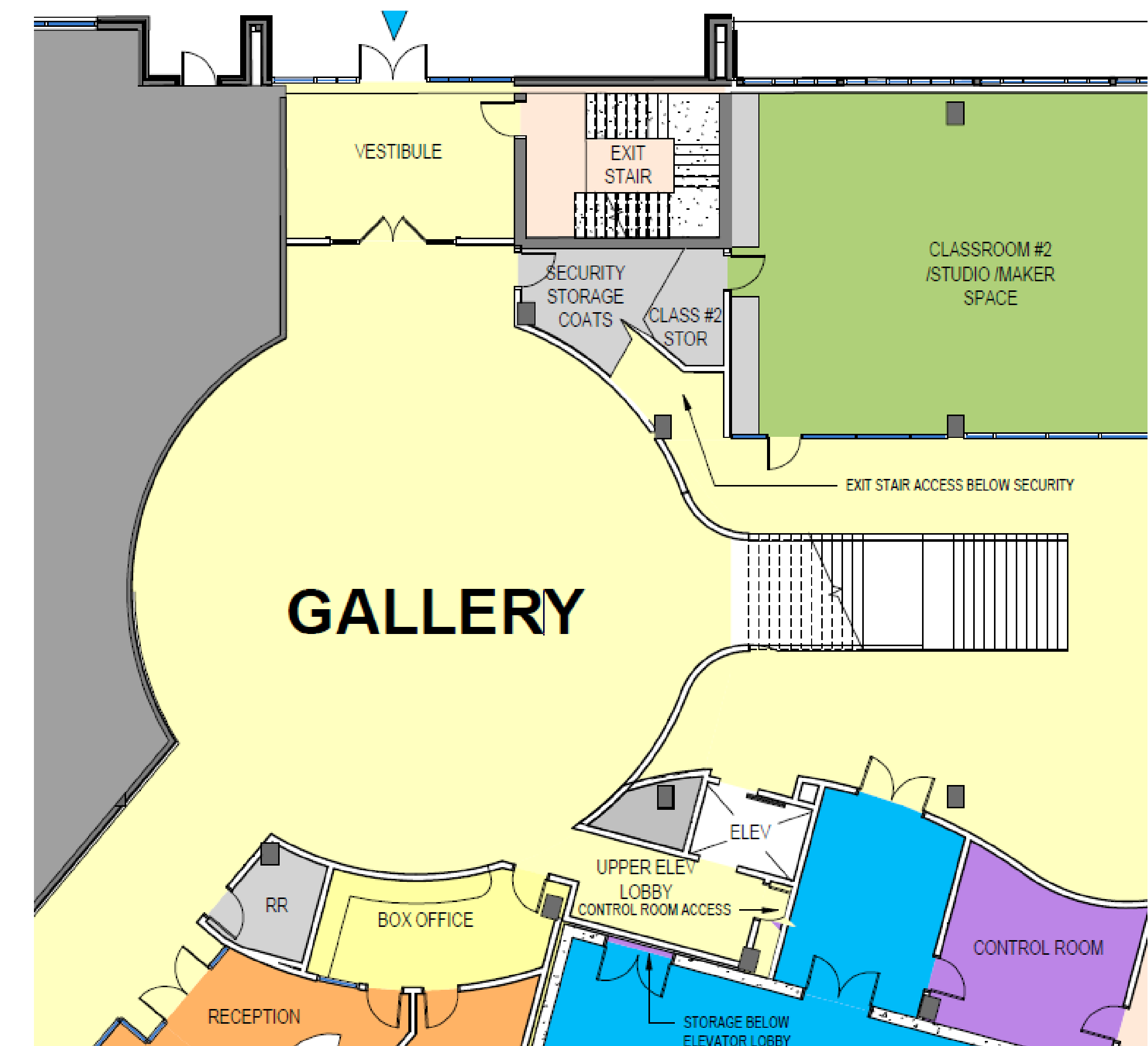
- Storage closet per room



Gallery space

For visual artists to exhibit their work

- Centrally located in lobby spaces
- Storage for equipment in administrative offices



Administrative offices

Workstations for operator and arts groups

Administration spaces:

- Reception
- 10 flexible work stations
- Two private offices
- Conference/work room
- Kitchenette
- 2 restrooms
- Storage / IT / mechanical

Connects to box office and box office storage

