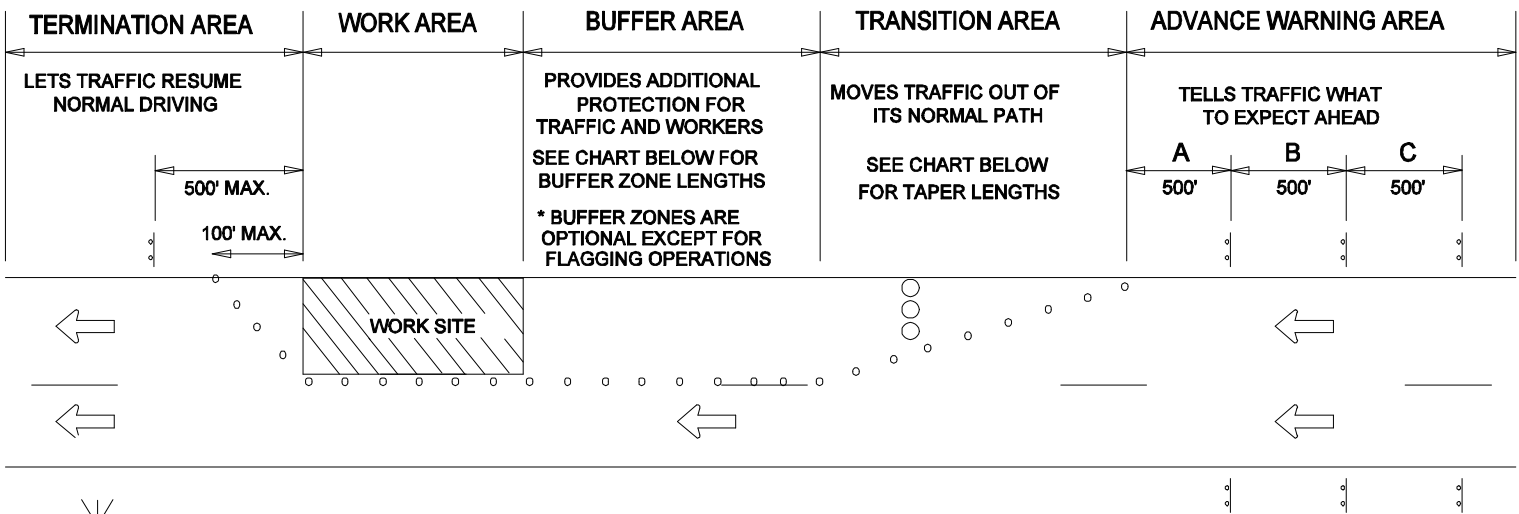


* SPEED M.P.H.	MINIMUM DISTANCE FROM TAPER TO FIRST SIGN	ADDITIONAL SIGNS IN SERIES TO BE SPACED AT A MINIMUM				MINIMUM COMBINED ADVANCED WARNING
		A	B	C	D	
25	200'	200'	200'			600'
30-35	300'	300'	300'			900'
40	500'	500'	500'			1500'
45-65	800'	700'	1100'	2600'	(OPTIONAL)	2600'

EXAMPLE: TWO LANES, ONE-WAY ROADWAY, POSTED SPEED LIMIT IS 30 M.P.H.



* NOTE: THE POSTED SPEED PLUS 10 MPH SHOULD BE USED FOR THE DESIGN OF SIGN SPACING, TAPER AND BUFFER LENGTHS

* SPEED M.P.H.	TAPER LENGTH			NUMBER OF DEVICES FOR TAPER	SPACING OF DEVICES ALONG TAPER IN FEET
	LANE WIDTH IN FEET				
	10	11	12		
20	70	75	80	5	20
25	105	115	125	6	25
30	150	165	180	7	30
35	205	225	245	8	35
40	270	295	320	9	40
45	450	495	540	13	45
50	500	550	600	13	50
55	550	605	660	13	55
60	600	660	720	13	60
65	650	715	780	13	65

SPEED (MPH)	LENGTH (FEET)
20	35
25	55
30	85
35	120
40	170
45	220
50	280
55	335
60	415
65	485

DATE	TRAFFIC OPERATIONS SECTION MONTGOMERY COUNTY, MARYLAND
07-01-14	
DES. BY	SPACING CHART
MCDPWT	
DRAWN BY	APPROVED
TCLE	_____
SCALE	CHIEF, TRAFFIC OPERATIONS SECTION
NTS	STANDARD TCP-100.01 _____ OF _____ SHEETS

REVISION BY	DATE	APPROVAL