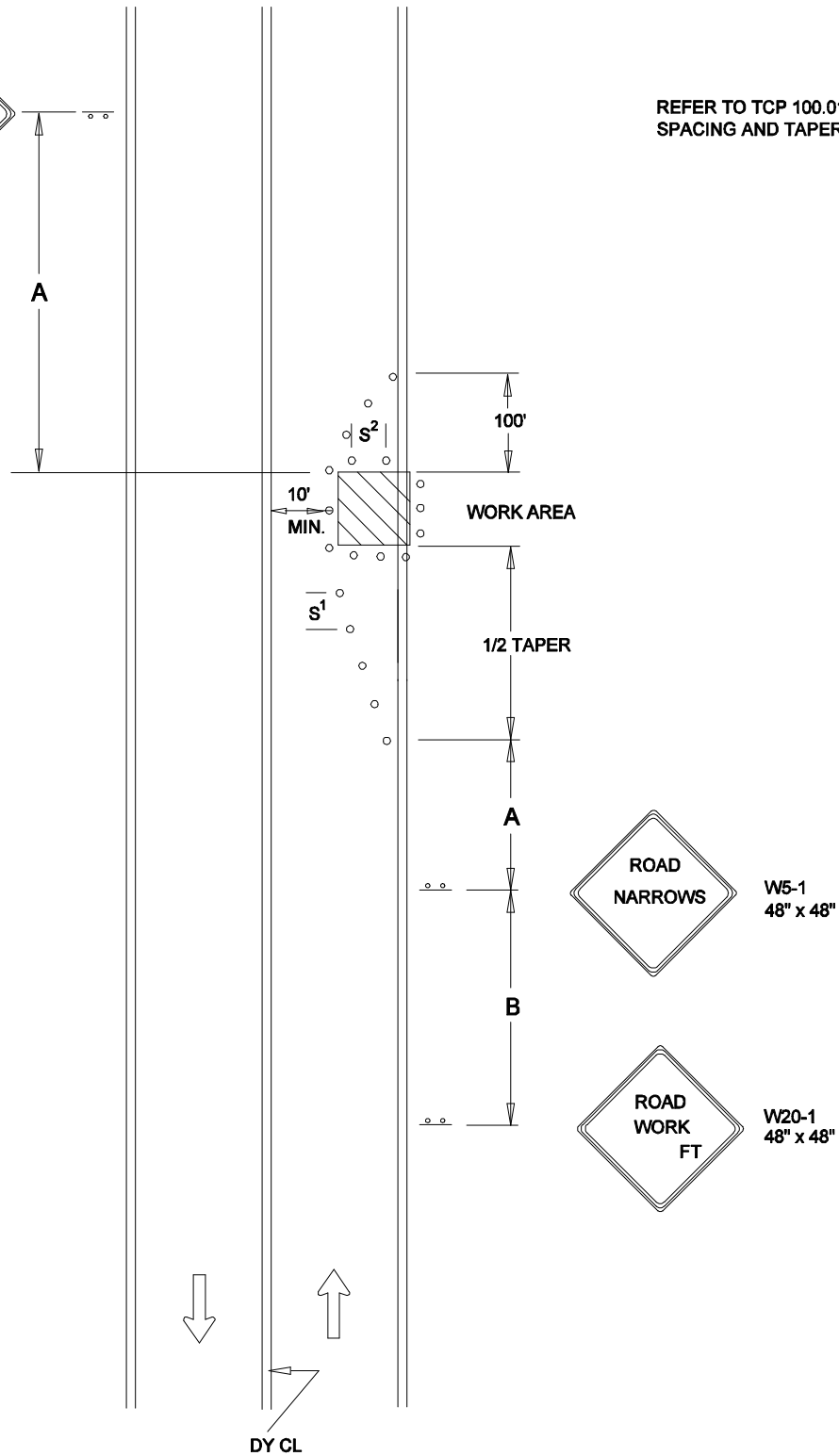


W20-1
48" x 48"



REFER TO TCP 100.01 FOR SIGN
SPACING AND TAPER LENGTHS



← DIRECTION OF TRAFFIC

○ ○ ○ SIGN

▨ WORK SITE

○ TRAFFIC DRUMS
OR CONES

S^1 = 30 FT.

S^2 = 10 FT.

REVISION BY	DATE	APPROVED

DATE	TRAFFIC OPERATIONS SECTION MONTGOMERY COUNTY, MARYLAND	
07-01-14		
DES. BY	TRAFFIC CONTROL FOR PARTIAL LANE CLOSURE	
MCDPWT		
DRAWN BY	APPROVED	
TCLE		
SCALE	CHIEF, TRAFFIC OPERATIONS SECTION	
NTS		
STANDARD TCP-102.01		___ OF ___ SHEETS