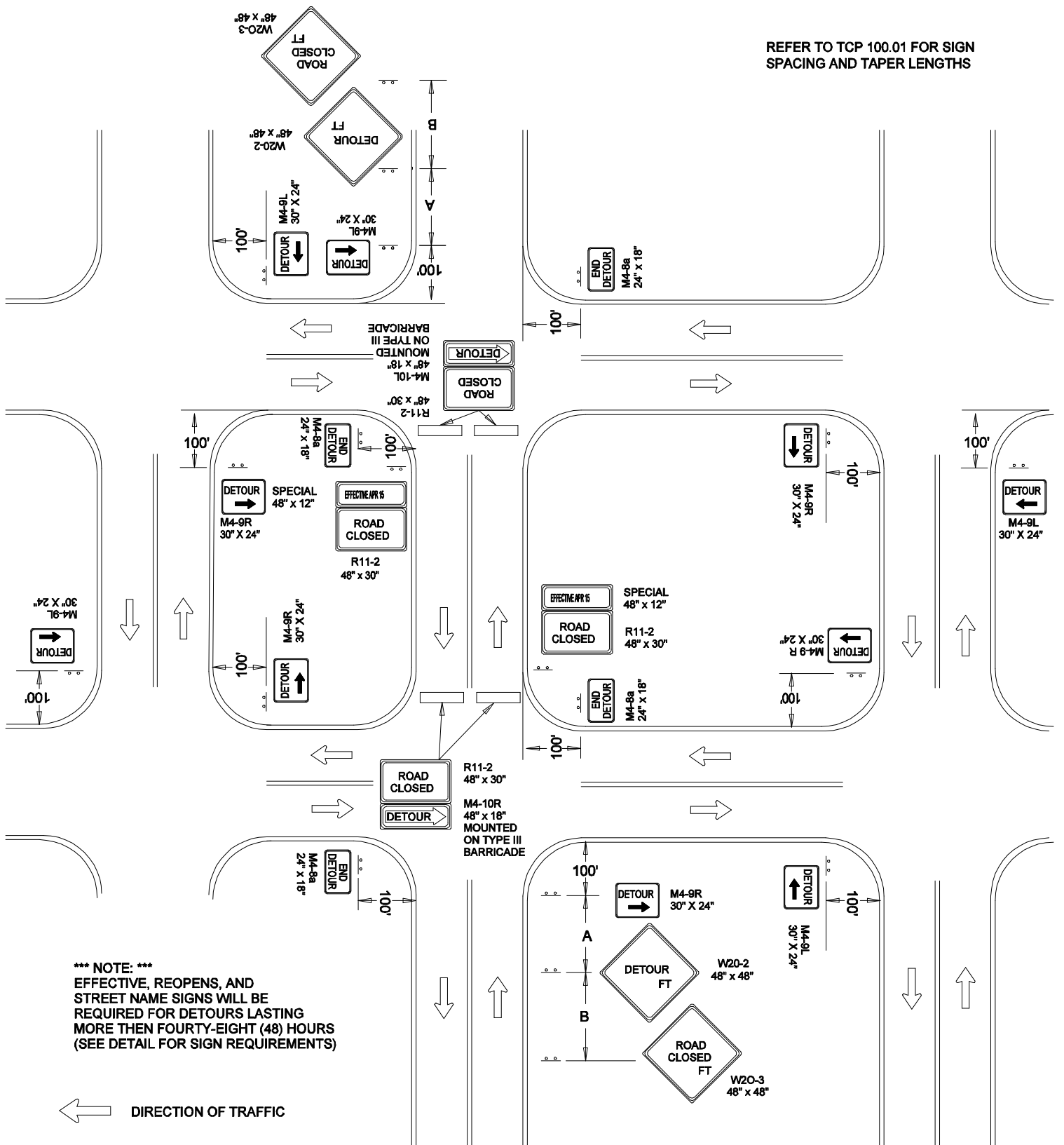


REFER TO TCP 100.01 FOR SIGN
SPACING AND TAPER LENGTHS



*** NOTE: ***
EFFECTIVE, REOPENS, AND
STREET NAME SIGNS WILL BE
REQUIRED FOR DETOURS LASTING
MORE THEN FOURTY-EIGHT (48) HOURS
(SEE DETAIL FOR SIGN REQUIREMENTS)

DIRECTION OF TRAFFIC

SIGN

WORK SITE

TYPE III BARRICADE

TRAFFIC DRUMS
OR CONES

$S^1=30$ FT.

$S^2=10$ FT.

| REVISION BY | DATE | APPROVED |
|----------------|------|----------|
| | | |

| | |
|-------------------------------|---|
| DATE 07-01-14 | TRAFFIC OPERATIONS SECTION MONTGOMERY COUNTY, MARYLAND |
| DES. BY MCDPWT | |
| DRAWN BY TCLE | TRAFFIC CONTROL FOR TEMPORARY DETOUR |
| SCALE NTS | APPROVED CHIEF, TRAFFIC OPERATIONS SECTION |
| STANDARD TCP-110.02 OF SHEETS | |