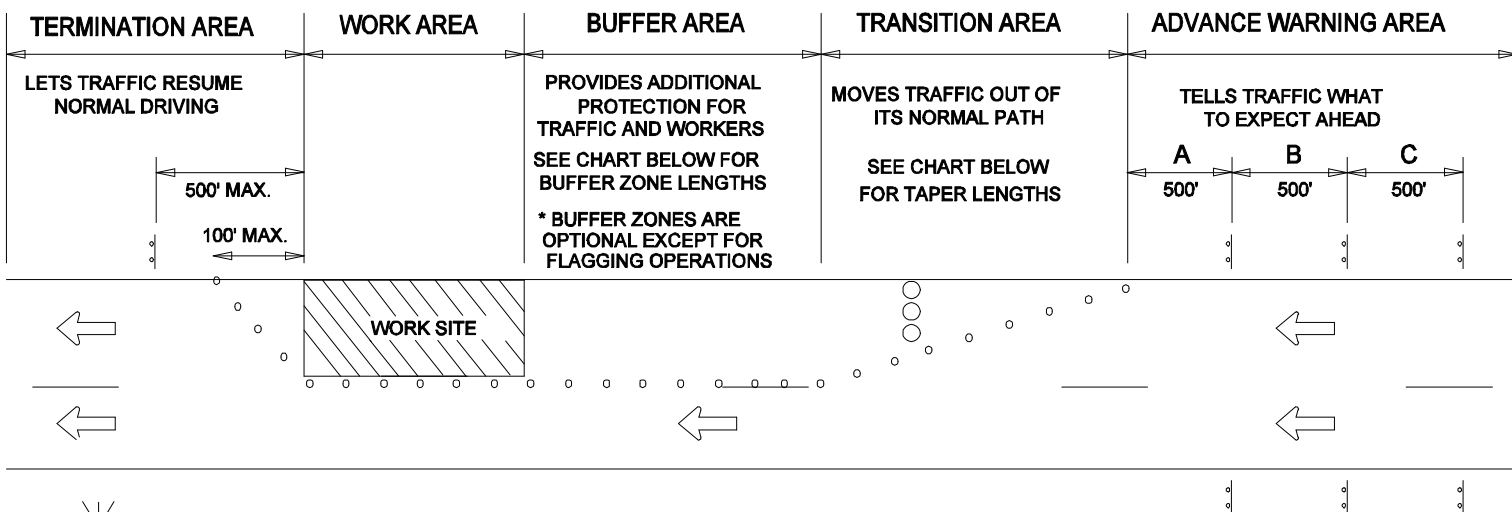
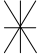


* SPEED M.P.H.	MINIMUM DISTANCE FROM TAPER TO FIRST SIGN	ADDITIONAL SIGNS IN SERIES TO BE SPACED AT A MINIMUM				MINIMUM COMBINED ADVANCED WARNING
	A	B	C	D		
25	200'	200'	200'			600'
30-35	300'	300'	300'			900'
40	500'	500'	500'			1500'
45-65	800'	700'	1100'	2600' (OPTIONAL)		2600'

EXAMPLE: TWO LANES, ONE-WAY ROADWAY, POSTED SPEED LIMIT IS 30 M.P.H.



* NOTE: THE POSTED SPEED PLUS
10 MPH SHOULD BE USED FOR THE DESIGN
OF SIGN SPACING, TAPER AND BUFFER LENGTHS

GUIDELINES FOR TAPER LENGTHS					
 SPEED M.P.H.	TAPER LENGTH			NUMBER OF DEVICES FOR TAPER	SPACING OF DEVICES ALONG TAPER IN FEET
	LANE WIDTH IN FEET				
	10	11	12		
20	70	75	80	5	20
25	105	115	125	6	25
30	150	165	180	7	30
35	205	225	245	8	35
40	270	295	320	9	40
45	450	495	540	13	45
50	500	550	600	13	50
55	550	605	660	13	55
60	600	660	720	13	60
65	650	715	780	13	65

GUIDELINES FOR BUFFER ZONE LENGTHS	
SPEED (MPH)	LENGTH (FEET)
20	35
25	55
30	85
35	120
40	170
45	220
50	280
55	335
60	415
65	485

DATE 07-01-14	TRAFFIC OPERATIONS SECTION MONTGOMERY COUNTY, MARYLAND
DES. BY MCDPWT	
DRAWN BY TCLE	SPACING CHART
SCALE NTS	APPROVED _____ CHIEF, TRAFFIC OPERATIONS SECTION
	STANDARD TCP-100.01 _____ OF _____ SHEETS

REVISION BY	DATE	APPROVAL

REFER TO TCP 100.01 FOR TAPER LENGTHS

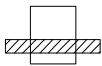
NOTES:

PVMS MESSAGES AND PLACEMENT OF THIS
DEVICE SHALL BE APPROVED BY THE
TRAFFIC OPERATIONS SECTION

THE EDGE OF THE SIGN BOARD OF THE
PVMS SHALL BE PLACED A MINIMUM OF
3' AND NO MORE THAN 8' FROM EDGE LINE



DIRECTION OF TRAFFIC

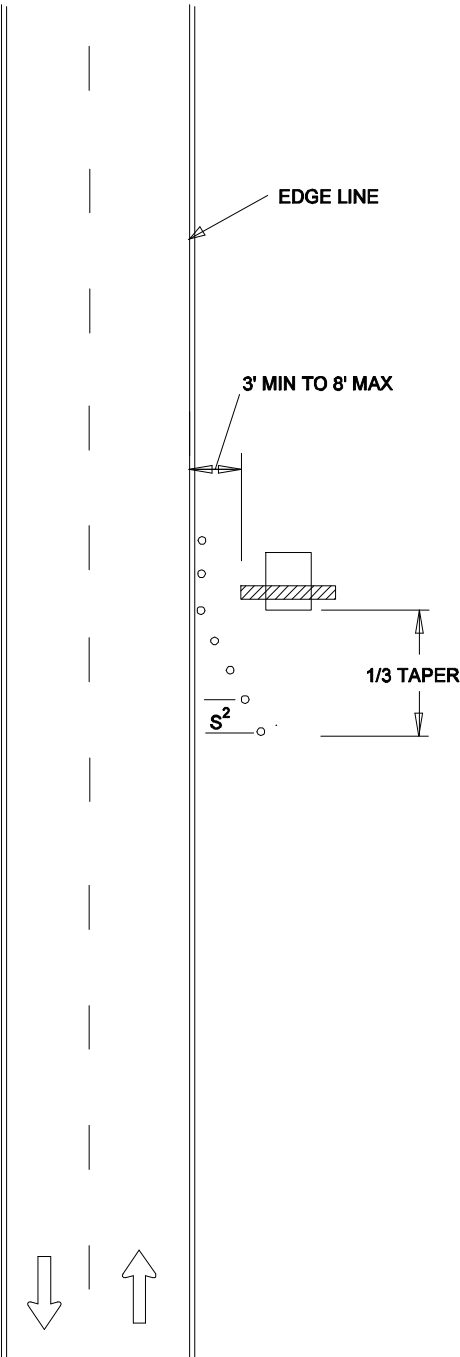


PORTABLE VARIABLE MESSAGE SIGN (PVMS)



TRAFFIC DRUMS
OR CONES

S²=10 FT.

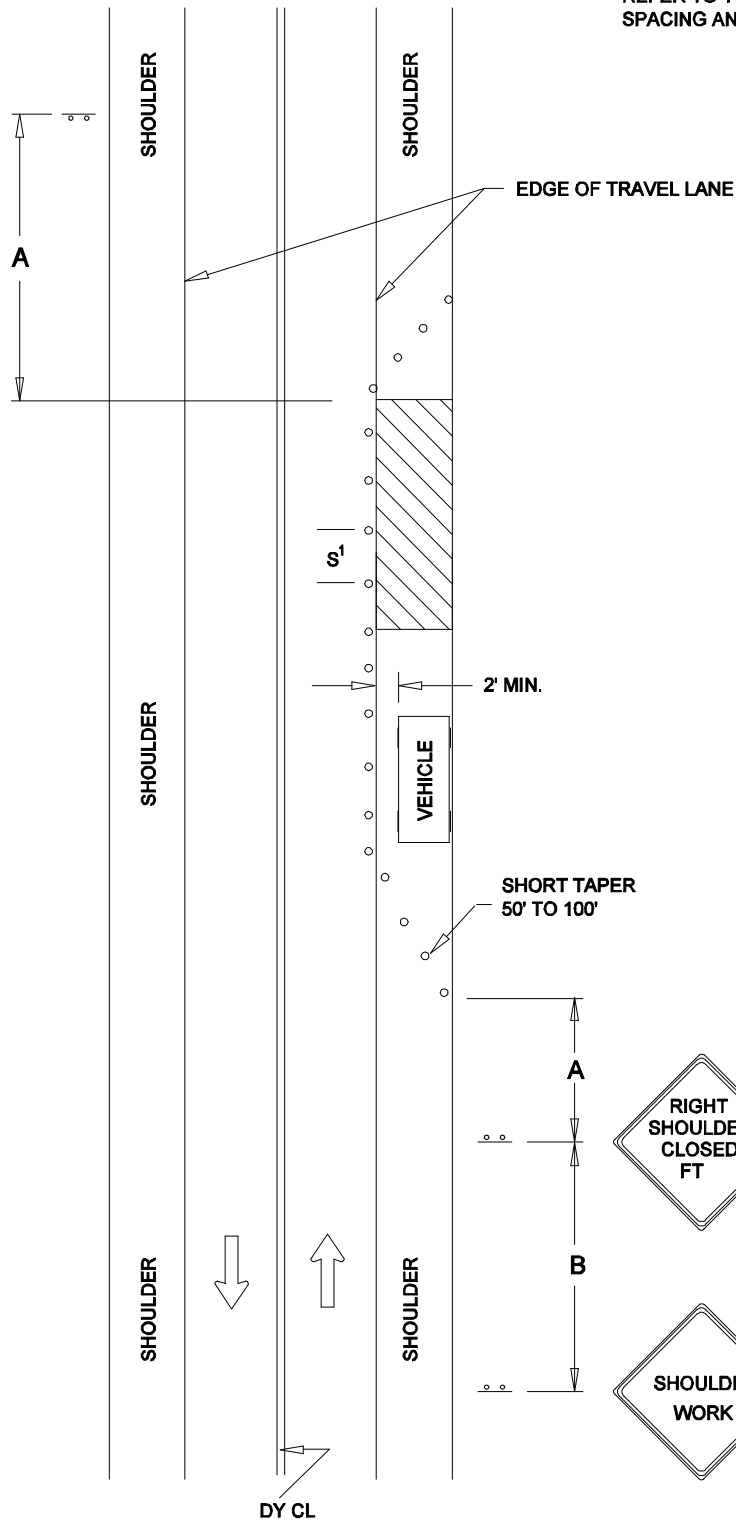


			DATE	TRAFFIC OPERATIONS SECTION MONTGOMERY COUNTY, MARYLAND	
			07-01-14		
			DES. BY	PORTABLE VARIABLE MESSAGE SIGN PLACEMENT	
			MCDPWT		
REVISION BY	DATE	APPROVED	DRAWN BY	APPROVED _____ CHIEF, TRAFFIC OPERATIONS SECTION STANDARD TCP-100.02 ____ OF ____ SHEETS	
			TCLE		
			SCALE		
			NTS		

REFER TO TCP 100.01 FOR SIGN
SPACING AND TAPER LENGTHS



W20-1 (MOD)
48" x 48"



W21-5b
48" x 48"



W21-5
48" x 48"



DIRECTION OF TRAFFIC



SIGN



WORK SITE



TRAFFIC DRUMS
OR CONES

$S^1=30$ FT.

$S^2=10$ FT.

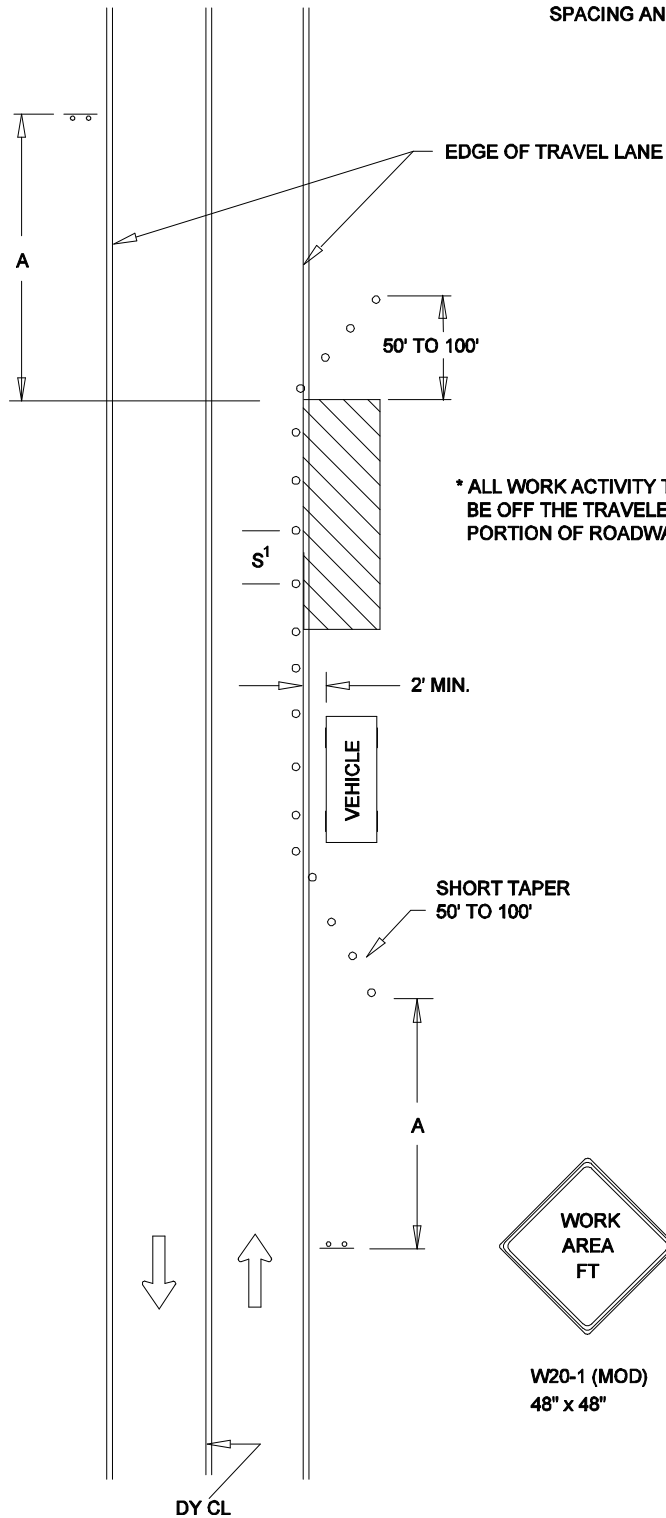
REVISION BY	DATE	APPROVED

DATE 07-01-14	TRAFFIC OPERATIONS SECTION MONTGOMERY COUNTY, MARYLAND
DES. BY MCDPWT	
DRAWN BY TCLE	TRAFFIC CONTROL FOR SHOULDER WORK
SCALE NTS	APPROVED _____ CHIEF, TRAFFIC OPERATIONS SECTION
STANDARD TCP-101.01 _____ OF _____ SHEETS	

REFER TO TCP 100.01 FOR SIGN
SPACING AND TAPER LENGTHS



W20-1 (MOD)
48" x 48"



DIRECTION OF TRAFFIC



SIGN



WORK SITE



TRAFFIC DRUMS
OR CONES

S¹=30 FT.

S²=10 FT.

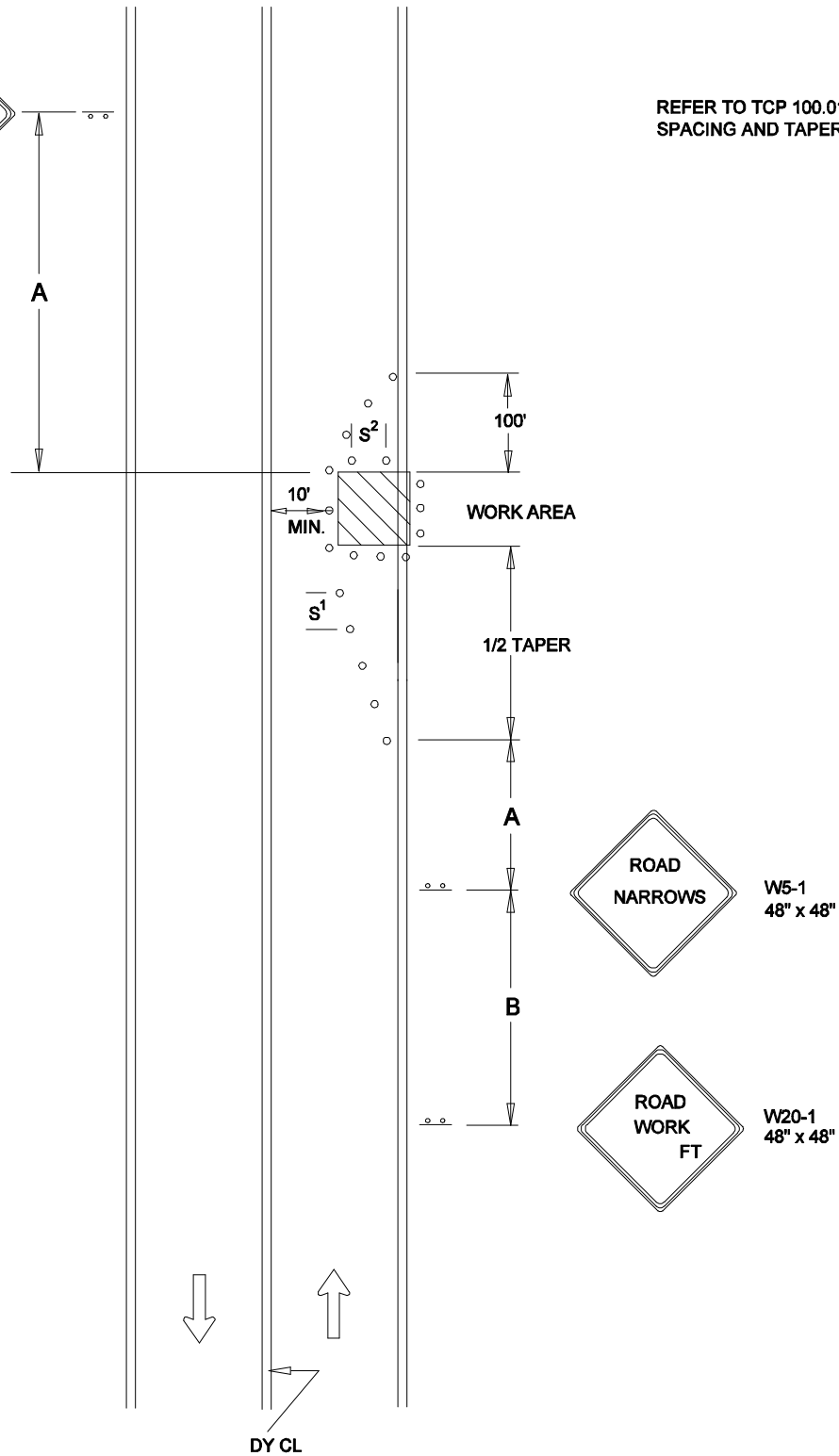
REVISION BY	DATE	APPROVED

DATE	TRAFFIC OPERATIONS SECTION MONTGOMERY COUNTY, MARYLAND	
07-01-14		
DES. BY	TRAFFIC CONTROL FOR WORK ACTIVITY OFF THE ROAD	
MCDPWT		
DRAWN BY	APPROVED	
TCLE		
SCALE	CHIEF, TRAFFIC OPERATIONS SECTION	
NTS		
STANDARD TCP-101.02		___ OF ___ SHEETS

W20-1
48" x 48"



REFER TO TCP 100.01 FOR SIGN
SPACING AND TAPER LENGTHS



← DIRECTION OF TRAFFIC

○ ○ ○ SIGN

▨ WORK SITE

○ TRAFFIC DRUMS
OR CONES

S^1 = 30 FT.

S^2 = 10 FT.

REVISION BY	DATE	APPROVED

DATE	TRAFFIC OPERATIONS SECTION MONTGOMERY COUNTY, MARYLAND	
07-01-14		
DES. BY	TRAFFIC CONTROL FOR PARTIAL LANE CLOSURE	
MCDPWT		
DRAWN BY	APPROVED	
TCLE		
SCALE	CHIEF, TRAFFIC OPERATIONS SECTION	
NTS		
STANDARD TCP-102.01		___ OF ___ SHEETS

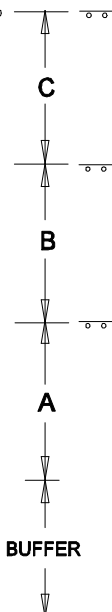
W20-1
48" x 48"



W20-4
48" x 48"



W20-7a(1)
48" x 48"



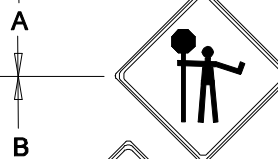
NOTE: ACCESS POINTS WITHIN LANE CLOSURE
SHALL BE CONTROLLED BY FLAGGER(S)

REFER TO TCP 100.01 FOR SIGN
SPACING, TAPER LENGTHS AND
BUFFER ZONE LENGTHS

WORK AREA

BUFFER

50'-100'



W20-7a(1)
48" x 48"



W20-4
48" x 48"



W20-1
48" x 48"



DIRECTION OF TRAFFIC



SIGN



WORK SITE



FLAGGER



TRAFFIC DRUMS
OR CONES

S¹=30 FT.

S²=10 FT.

DY CL

REVISION BY	DATE	APPROVED

DATE	TRAFFIC OPERATIONS SECTION MONTGOMERY COUNTY, MARYLAND	
07-01-14		
DES. BY	FLAGGING CONTROL NON - INTERSECTION	
MCDPWT		
DRAWN BY	APPROVED _____ CHIEF, TRAFFIC OPERATIONS SECTION	
TCLE		
SCALE	STANDARD TCP-102.02 _____ OF _____ SHEETS	
NTS		

W20-1
48" x 48"



W5-1
48" x 48"



B

A

1/2 TAPER

TANGENT

TAPER

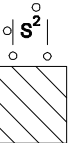
RESTRICT
PARKING

10'
MIN.

10'
MIN.

S¹

S¹



WORK AREA

100'

1/2 TAPER

A

B

REFER TO TCP 100.01 FOR SIGN
SPACING AND TAPER LENGTHS



W1-3R
48" x 48"



W1-6
48" x 24"
ARROW

RESTRICT
PARKING



W1-3L
48" x 48"



W20-1
48" x 48"



DY CL



DIRECTION OF TRAFFIC



SIGN



WORK SITE



TRAFFIC DRUMS
OR CONES

S¹=30 FT.

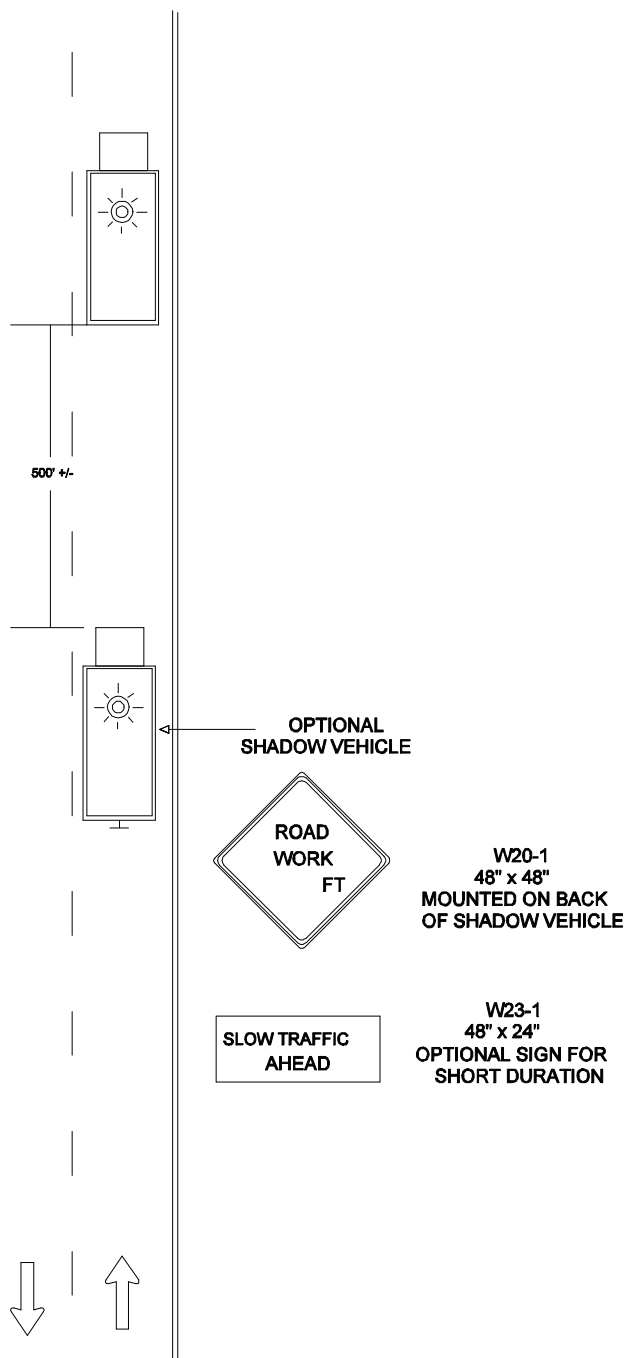
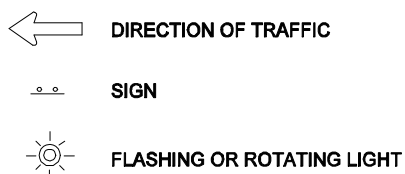
S²=10 FT.

REVISION BY	DATE	APPROVED

DATE	TRAFFIC OPERATIONS SECTION MONTGOMERY COUNTY, MARYLAND
07-01-14	
DES. BY	TRAFFIC CONTROL FOR MAINTAINING TWO-WAY TRAFFIC BY ENCROACHING INTO OPPOSING TRAFFIC FLOW
MCDPWT	
DRAWN BY	APPROVED
TCLE	
SCALE	_____ CHIEF, TRAFFIC OPERATIONS SECTION
NTS	STANDARD TCP-102.03 _____ OF _____ SHEETS

A diamond-shaped sign with a double border. The text "ROAD WORK" is in large, bold, black capital letters, and "FT" is in smaller, bold, black capital letters below it.

**NO WORK OPERATION WHICH INTERFERES
WITH THE FLOW OF TRAFFIC MAY TAKE PLACE
DURING PEAK HOURS MONDAY - FRIDAY
6 A.M. - 9 A.M. AND 3:30 P.M. - 7 P.M.**



			DATE	TRAFFIC OPERATIONS SECTION MONTGOMERY COUNTY, MARYLAND
			07-01-14	
REVISION BY	DATE	APPROVED	DES. BY	TRAFFIC CONTROL FOR MOBILE OPERATION (<15 MIN)
			MCDPWT	
			DRAWN BY	
			TCLE	
			SCALE	_____
			NTS	CHIEF, TRAFFIC OPERATIONS SECTION
			STANDARD TCP-102.05	_____ OF _____ SHEETS

NOTE:
 WORK VEHICLES SHALL DISPLAY
 ROTATING AND /OR FLASHING LIGHT
 ATOP VEHICLES AND FLASHING
 WARNING LIGHTS IN FRONT AND REAR.

VEHICLES SHALL NOT PROCEED
 MORE THAN THREE (3) MILES AHEAD
 OF THE ADVANCE WARNING
 SIGNS.

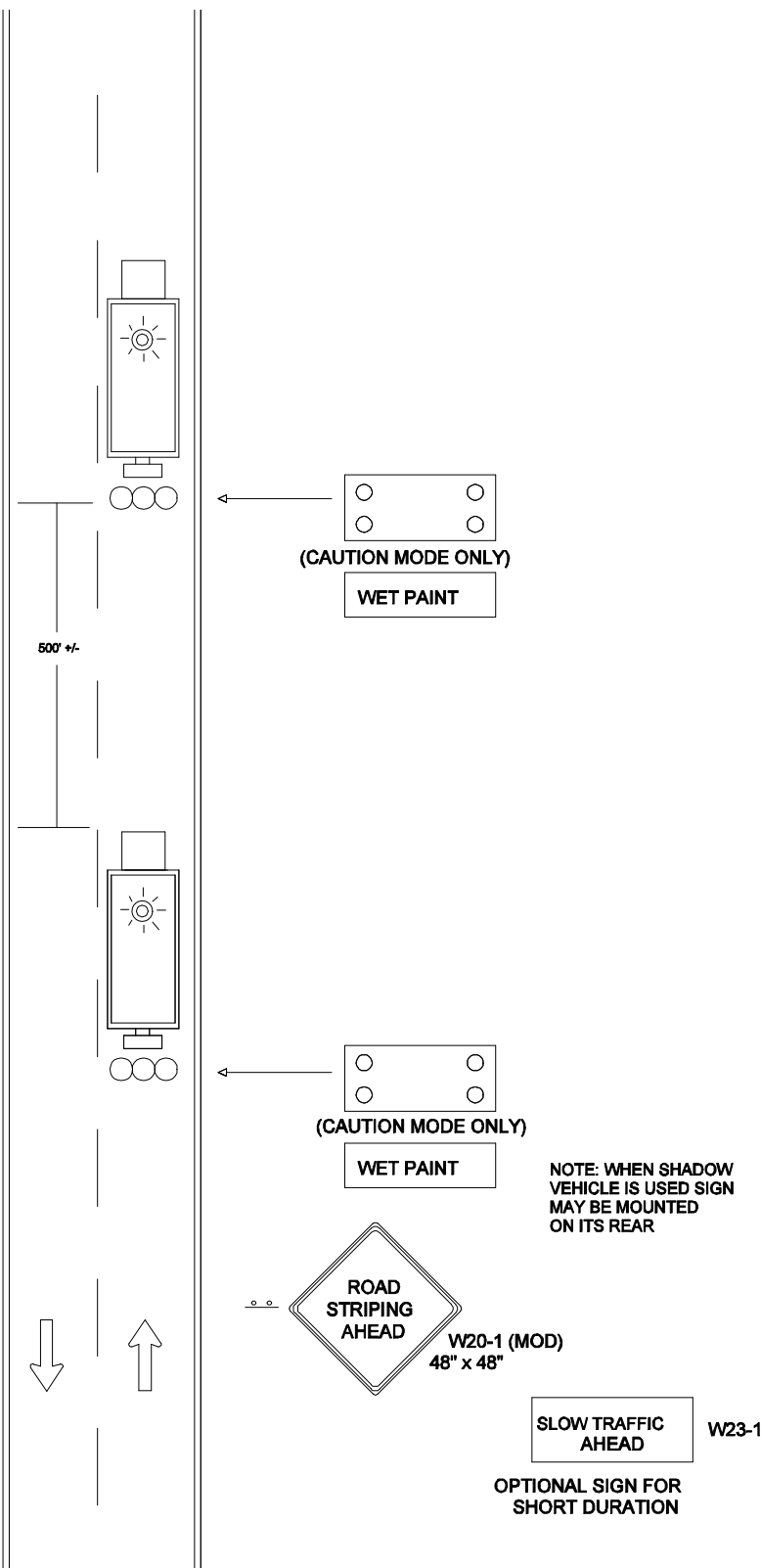
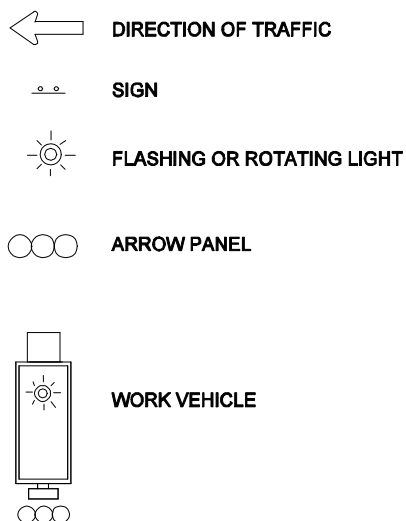
VEHICLES SHOULD NOT OCCUPY OR BE
 STOPPED IN A LANE BEYOND A HORIZONTAL
 CURVE OR A VERTICAL CURVE (HILL).

IF STOPPING IS NECESSARY, FLAGGERS SHALL
 BE POSITIONED PRIOR TO STOPPING WORK
 VEHICLES.

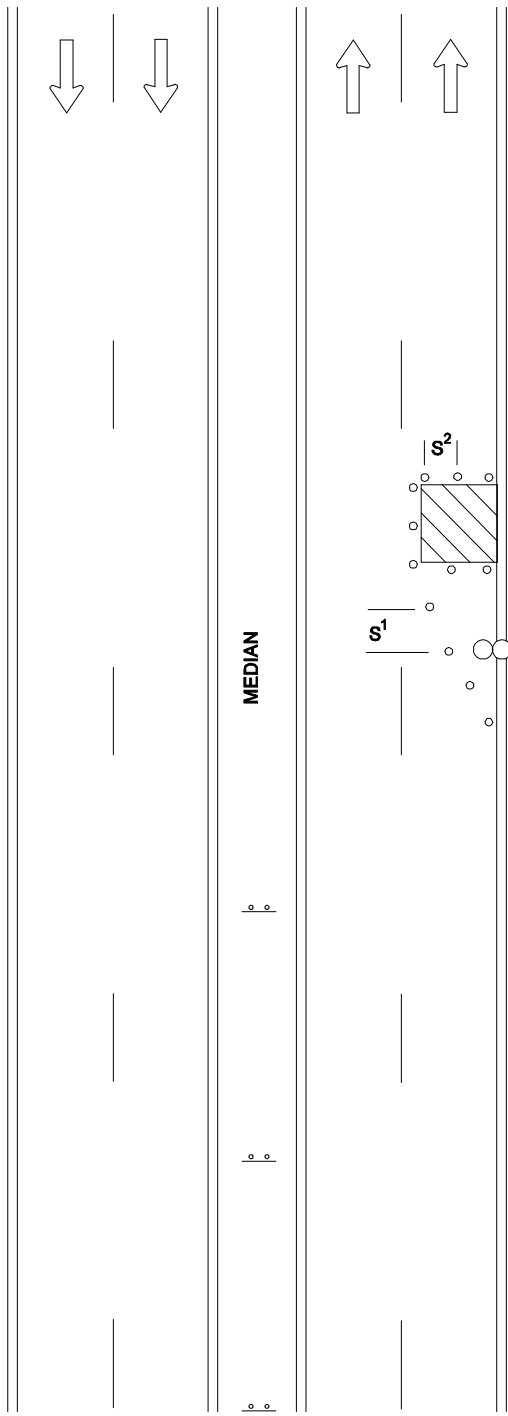
THE FLAGGER SHALL BE POSTIONED IN
 ADVANCE OF THE CURVE (HORIZONTAL OR VERTICAL)
 TO PROVIDE MOTORIST ADEQUATE ADVANCE
 WARNING OF TEMPORARY WORK ZONE.

NO WORK OPERATION WHICH INTERFERES
 WITH THE FLOW OF TRAFFIC MAY TAKE PLACE
 DURING PEAK HOURS MONDAY - FRIDAY
 6 A.M. - 9 A.M. AND 3:30 P.M. - 7 P.M.

FOR PAVEMENT MARKING MATERIALS HAVING
 SLOW DRYING TIMES ADDITIONAL BACK-UP
 VEHICLES TO FOLLOW TRUCK MAY
 BE NECESSARY.

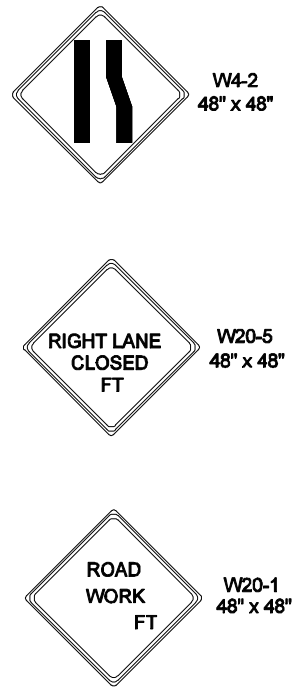


			DATE 07-01-14	TRAFFIC OPERATIONS SECTION MONTGOMERY COUNTY, MARYLAND	
			DES. BY MCDPWT		
REVISION BY	DATE	APPROVED	DRAWN BY TCLE	TRAFFIC CONTROL FOR MOVING MARKING OPERATION (1)	
			SCALE	APPROVED	
			NTS	CHIEF, TRAFFIC OPERATIONS SECTION	
				STANDARD TCP-102.06 _____ OF _____ SHEETS	



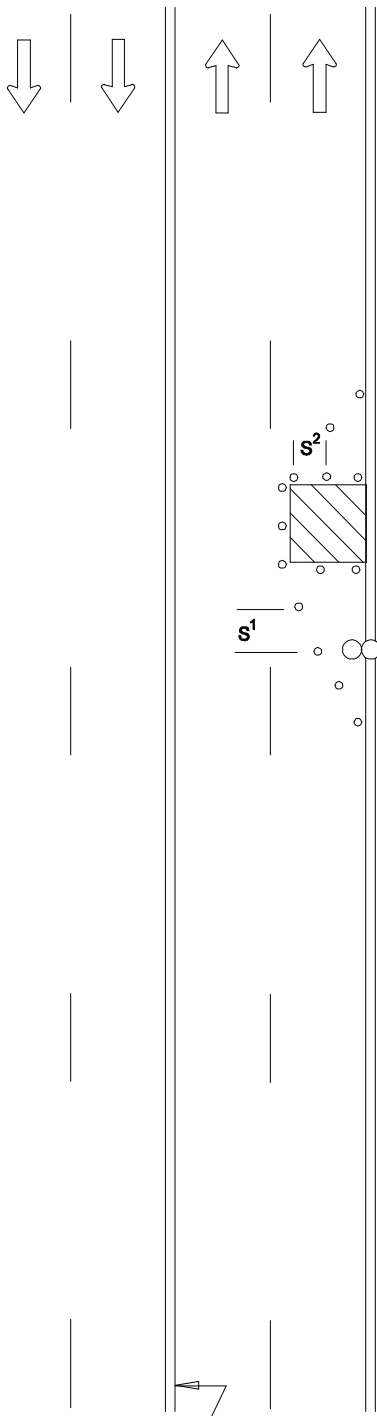
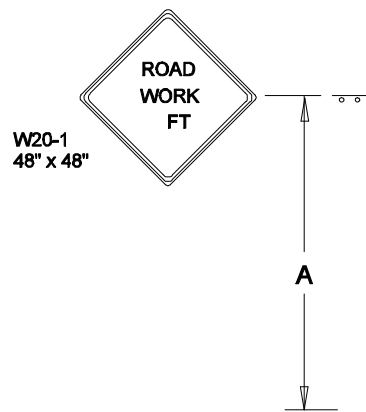
NOTE: ACCESS POINTS WITHIN LANE CLOSURE SHALL BE CONTROLLED BY FLAGGER(S)

REFER TO TCP 100.01 FOR SIGN SPACING AND TAPER LENGTHS



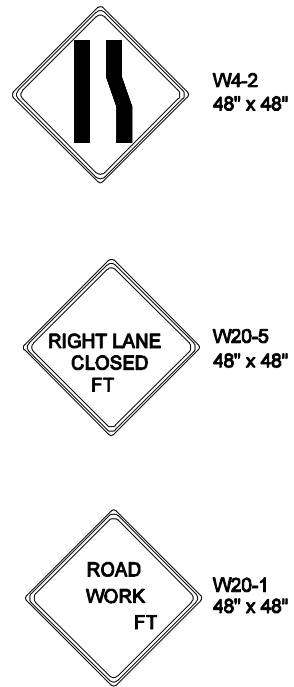
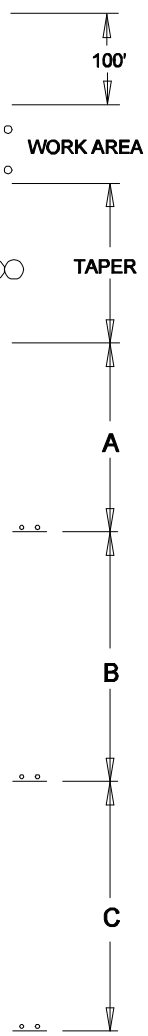
- DIRECTION OF TRAFFIC**
- SIGN**
- WORK SITE**
- ARROW PANEL**
- TRAFFIC DRUMS OR CONES**
- S¹ = 30 FT.**
- S² = 10 FT.**

			DATE 07-01-14	TRAFFIC OPERATIONS SECTION MONTGOMERY COUNTY, MARYLAND	
			DES. BY MCDPWT	TRAFFIC CONTROL FOR RIGHT LANE CLOSURE (DIVIDED)	
			DRAWN BY TCLE		
			SCALE NTS	APPROVED _____ CHIEF, TRAFFIC OPERATIONS SECTION	
				STANDARD TCP-103.01 _____ OF _____ SHEETS	
REVISION BY	DATE	APPROVED			



NOTE: ACCESS POINTS WITHIN LANE CLOSURE SHALL BE CONTROLLED BY FLAGGER(S)

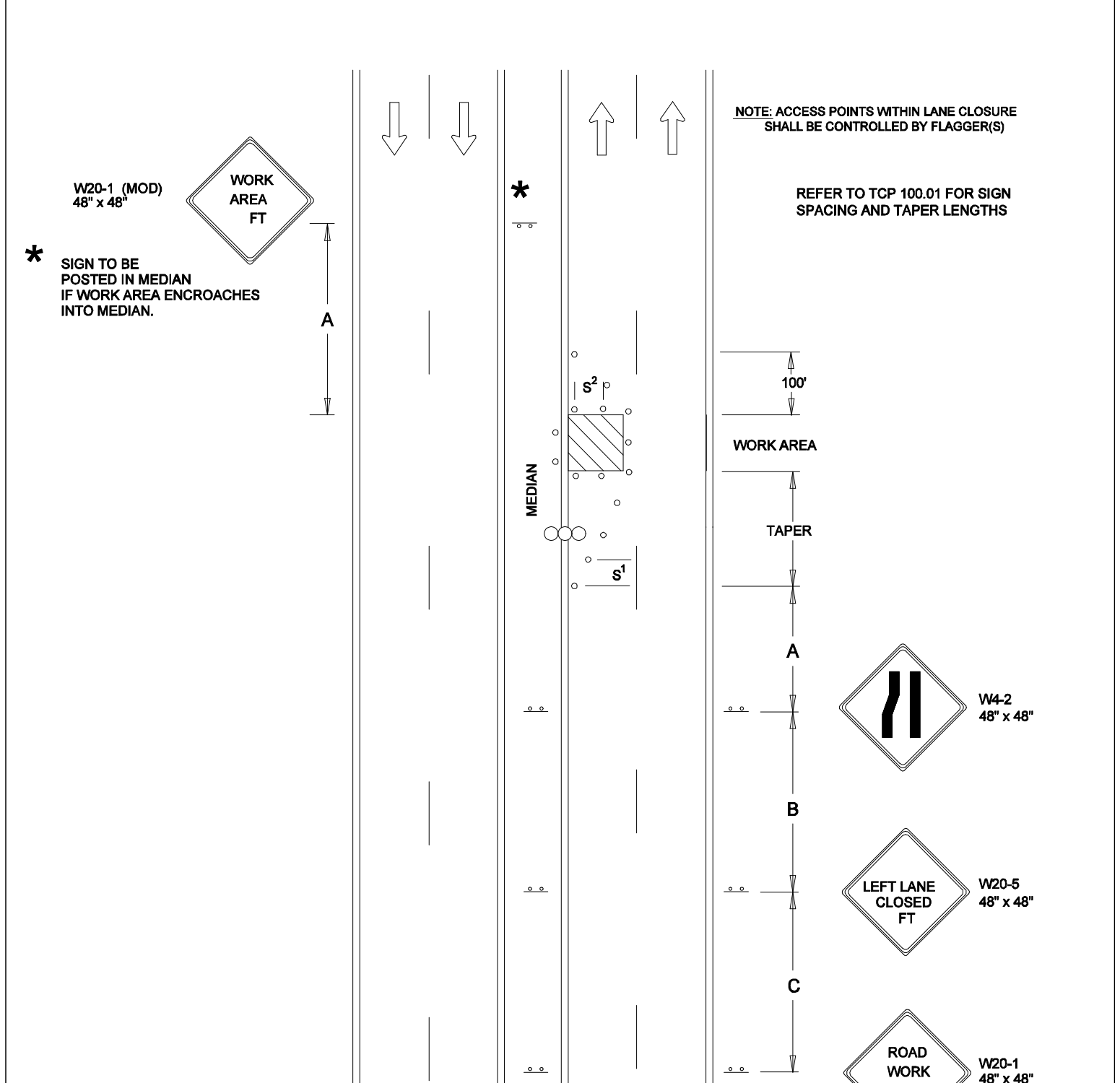
REFER TO TCP 100.01 FOR SIGN SPACING AND TAPER LENGTHS



- DIRECTION OF TRAFFIC
- SIGN
- WORK SITE
- ARROW PANEL
- TRAFFIC DRUMS OR CONES
- $S^1 = 30$ FT.
- $S^2 = 10$ FT.

REVISION BY	DATE	APPROVED

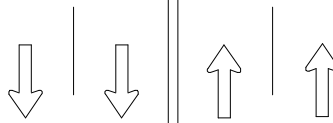
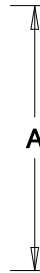
DATE 07-01-14	TRAFFIC OPERATIONS SECTION MONTGOMERY COUNTY, MARYLAND
DES. BY MCDPWT	
DRAWN BY TCLE	TRAFFIC CONTROL FOR RIGHT LANE CLOSURE (UNDIVIDED)
SCALE NTS	APPROVED _____ CHIEF, TRAFFIC OPERATIONS SECTION
STANDARD TCP-103.02 _____ OF _____ SHEETS	



- DIRECTION OF TRAFFIC
- SIGN
- WORK SITE
- ARROW PANEL
- TRAFFIC DRUMS OR CONES
- $S^1 = 30 \text{ FT.}$
- $S^2 = 10 \text{ FT.}$

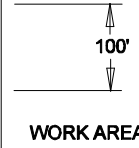
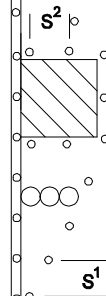
			DATE 07-01-14	TRAFFIC OPERATIONS SECTION MONTGOMERY COUNTY, MARYLAND	
			DES. BY MCDPWT		
			DRAWN BY TCLE	TRAFFIC CONTROL FOR LEFT LANE CLOSURE (DIVIDED)	
			SCALE NTS	APPROVED _____ CHIEF, TRAFFIC OPERATIONS SECTION	
				STANDARD TCP-103.03 _____ OF _____ SHEETS	
REVISION BY	DATE	APPROVED			

W20-1 (MOD)
48" x 48"



**NOTE: ACCESS POINTS WITHIN LANE CLOSURE
SHALL BE CONTROLLED BY FLAGGER(S)**

**REFER TO TCP 100.01 FOR SIGN
SPACING AND TAPER LENGTHS**



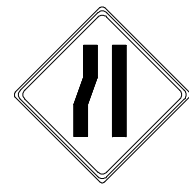
WORK AREA

TAPER

A

B

C



W4-2
48" x 48"



W20-5
48" x 48"



W20-1
48" x 48"

DY CL

← **DIRECTION OF TRAFFIC**

○ ○ **SIGN**

▨ **WORK SITE**

○ ○ ○ **ARROW PANEL**

○ **TRAFFIC DRUMS
OR CONES**

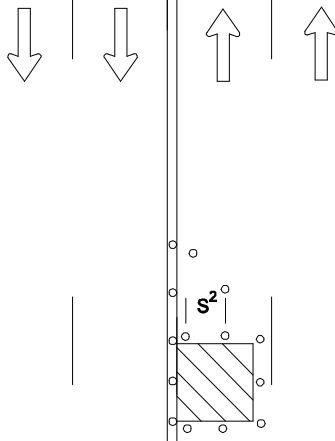
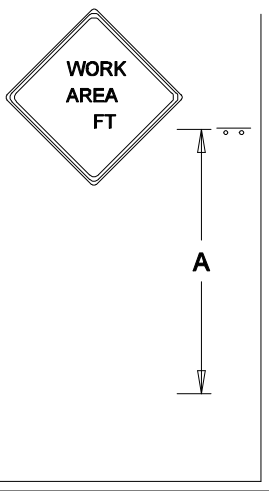
S^1 = 30 FT.

S^2 = 10 FT.

REVISION BY	DATE	APPROVED

DATE 07-01-14	TRAFFIC OPERATIONS SECTION MONTGOMERY COUNTY, MARYLAND
DES. BY MCDPWT	
DRAWN BY TCLE	TRAFFIC CONTROL FOR LEFT LANE CLOSURE (UNDIVIDED)
SCALE NTS	APPROVED _____ CHIEF, TRAFFIC OPERATIONS SECTION
STANDARD TCP-103.04 _____ OF _____ SHEETS	

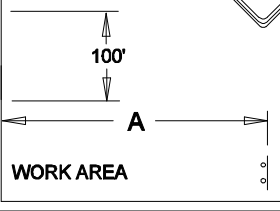
W20-1 (MOD)
48" x 48"



NOTE: ACCESS POINTS WITHIN LANE CLOSURE
SHALL BE CONTROLLED BY FLAGGER(S)

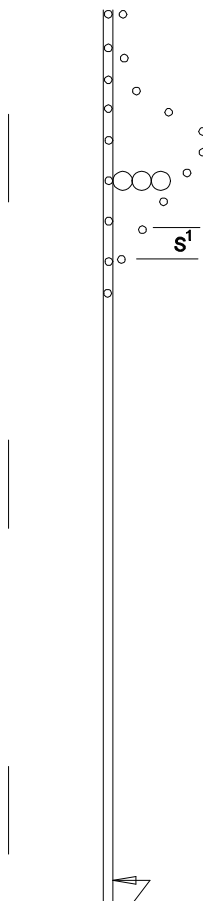
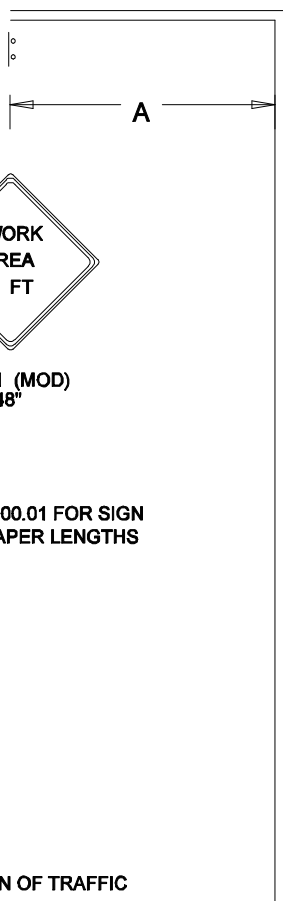


W20-1 (MOD)
48" x 48"



W20-1 (MOD)
48" x 48"

REFER TO TCP 100.01 FOR SIGN
SPACING AND TAPER LENGTHS

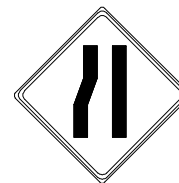


DY CL

50'+/- LEFT TURN
STORAGE MINIMUM

TAPER

A



W4-2
48" x 48"

B



W20-5
48" x 48"

C



W20-1
48" x 48"



DIRECTION OF TRAFFIC



SIGN



WORK SITE



ARROW PANEL



TRAFFIC DRUMS
OR CONES

S¹=30 FT.

S²=10 FT.

REVISION BY	DATE	APPROVED

DATE 07-01-14	TRAFFIC OPERATIONS SECTION MONTGOMERY COUNTY, MARYLAND
DES. BY MCDPWT	
DRAWN BY TCLE	TRAFFIC CONTROL FOR LEFT LANE CLOSURE (INTERSECTION FAR SIDE)
SCALE NTS	APPROVED
	CHIEF, TRAFFIC OPERATIONS SECTION
	STANDARD TCP-103.05 OF SHEETS

NOTE:
 WORK VEHICLES SHALL DISPLAY
 ROTATING AND /OR FLASHING LIGHT
 ATOP VEHICLES AND FLASHING
 WARNING LIGHTS IN FRONT AND REAR.

VEHICLES SHALL NOT PROCEED
 MORE THAN THREE (3) MILES AHEAD
 OF THE ADVANCE WARNING
 SIGNS.

VEHICLES SHOULD NOT OCCUPY OR BE
 STOPPED IN A LANE BEYOND A HORIZONTAL
 CURVE OR A VERTICAL CURVE (HILL).

IF STOPPING IS NECESSARY, FLAGGERS SHALL
 BE POSITIONED PRIOR TO STOPPING WORK
 VEHICLES.

THE FLAGGER SHALL BE POSITIONED IN
 ADVANCE OF THE CURVE (HORIZONTAL OR
 VERTICAL) TO PROVIDE MOTORIST ADEQUATE
 ADVANCE WARNING OF TEMPORARY WORK ZONE.

NO WORK OPERATIONS WHICH INTERFERES
 WITH THE FLOW OF TRAFFIC MAY TAKE PLACE
 DURING PEAK HOURS MONDAY - FRIDAY
 6 A.M. - 9 A.M. AND 3:30 P.M. - 7 P.M.

FOR PAVEMENT MARKING MATERIALS HAVING
 SLOW DRYING TIMES ADDITIONAL BACK-UP
 VEHICLES TO FOLLOW TRUCK MAY
 BE NECESSARY.



DIRECTION OF TRAFFIC



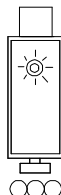
SIGN



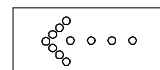
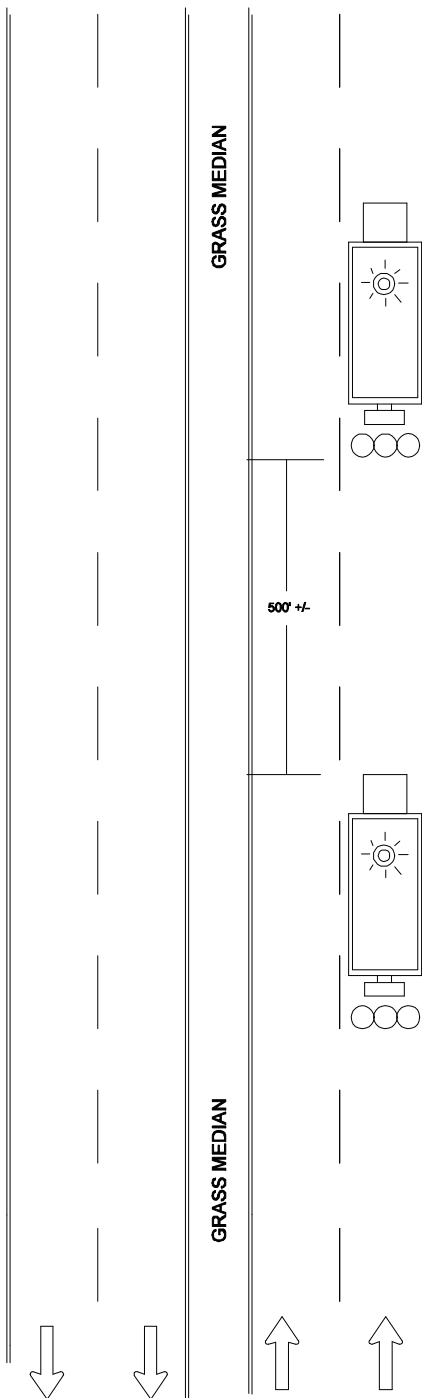
FLASHING OR ROTATING LIGHT



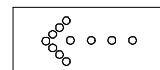
ARROW PANEL



WORK VEHICLE



WET PAINT



WET PAINT

NOTE: WHEN SHADOW
 VEHICLE IS USED SIGN
 MAY BE MOUNTED
 ON ITS REAR



W20-1 (MOD)
 48" x 48"

SLOW TRAFFIC
 AHEAD

W23-1

OPTIONAL SIGN FOR
 SHORT DURATION

REVISION BY	DATE	APPROVED

DATE 07-01-14	TRAFFIC OPERATIONS SECTION MONTGOMERY COUNTY, MARYLAND
DES. BY MCDPWT	
DRAWN BY TCLE	TRAFFIC CONTROL FOR MOVING MARKING OPERATION (2)
SCALE NTS	APPROVED _____ CHIEF, TRAFFIC OPERATIONS SECTION
	STANDARD TCP-103.06 _____ OF _____ SHEETS

W20-1
48" x 48"



W9-3
48" x 48"



B

A

100'

BUFFER

WORK AREA

NOTE: ACCESS POINTS WITHIN LANE CLOSURE
SHALL BE CONTROLLED BY FLAGGER(S)

REFER TO TCP 100.01 FOR SIGN
SPACING AND TAPER LENGTHS

NOTE: ARROW DISPLAY PANEL
TO BE SET ON CAUTION MODE.

WORK AREA

BUFFER

100'

A

B



W9-3
48" x 48"



W20-1
48" x 48"



DIRECTION OF TRAFFIC



SIGN



WORK SITE



ARROW PANEL



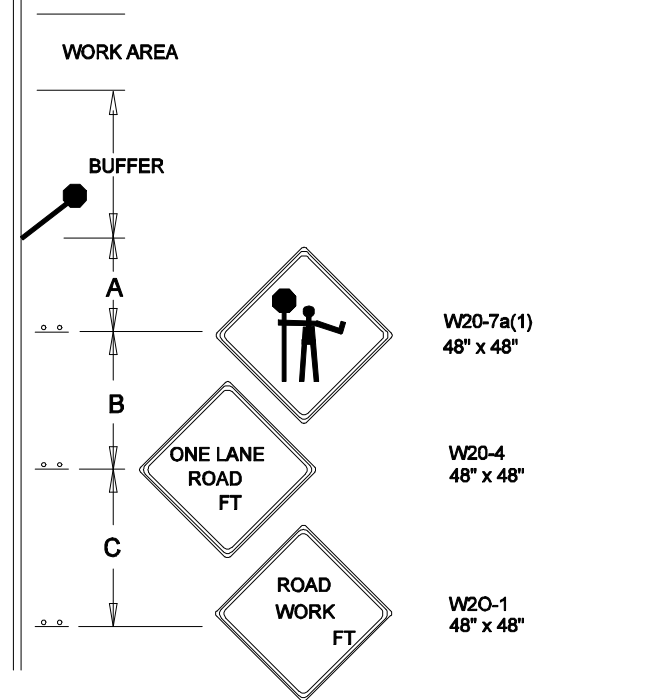
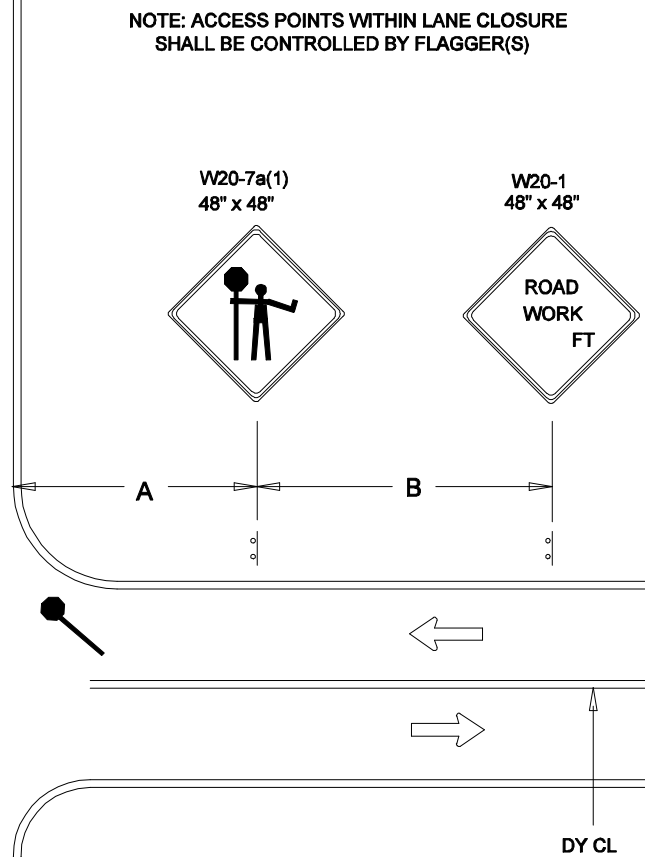
TRAFFIC DRUMS
OR CONES

S¹=30 FT.

S²=10 FT.

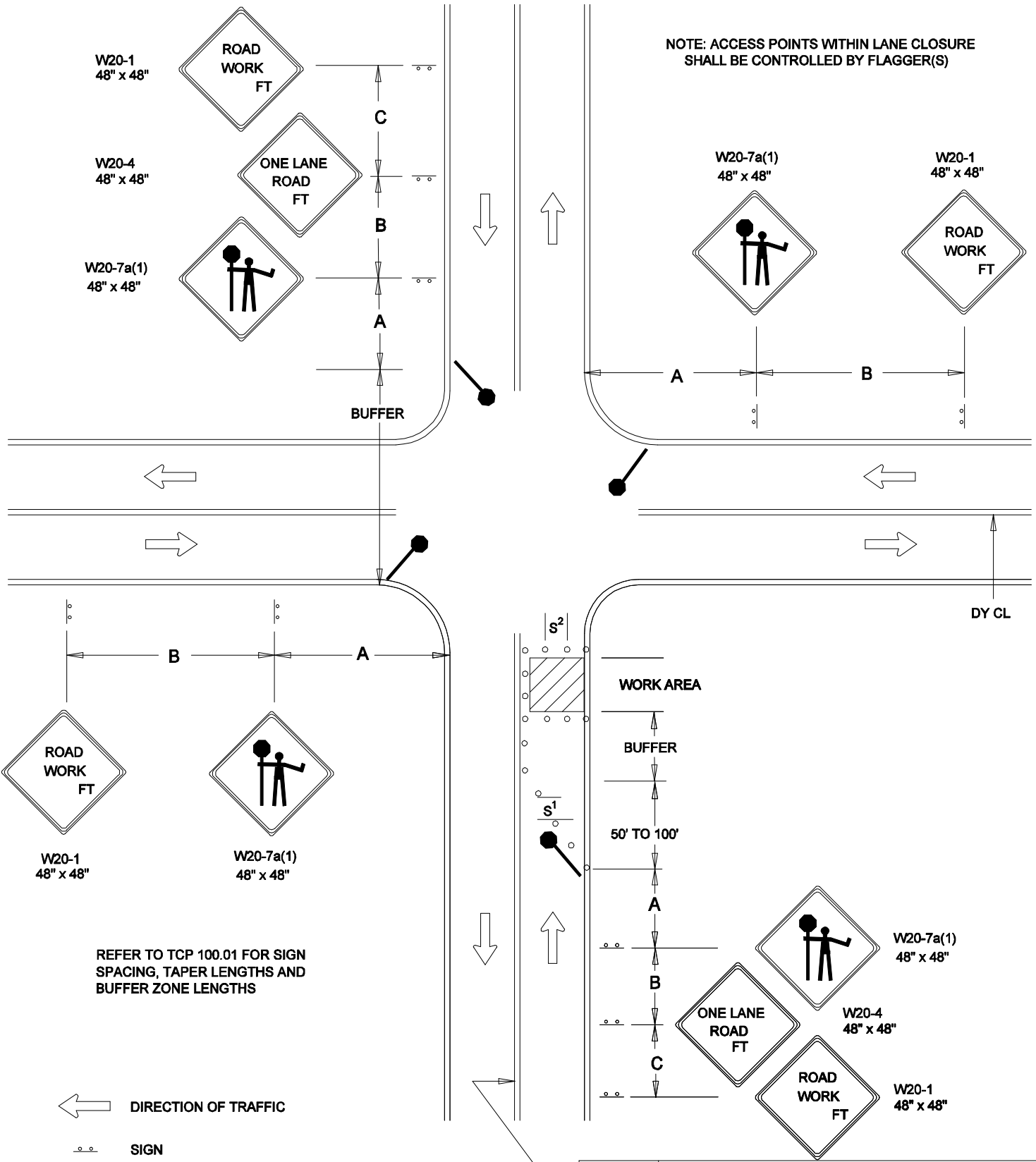
REVISION BY	DATE	APPROVED

DATE 07-01-14	TRAFFIC OPERATIONS SECTION MONTGOMERY COUNTY, MARYLAND
DES. BY MCDPWT	
DRAWN BY TCLE	TRAFFIC CONTROL FOR TWO-WAY LEFT TURN LANE CLOSURE
SCALE NTS	APPROVED _____ CHIEF, TRAFFIC OPERATIONS SECTION
	STANDARD TCP-104.01 _____ OF _____ SHEETS



DY CL

DATE 07-01-14	TRAFFIC OPERATIONS SECTION MONTGOMERY COUNTY, MARYLAND
DES. BY	
MCDPWT	FLAGGING CONTROL AT 4 - LEG INTERSECTION (1)
DRAWN BY	
TCLE	APPROVED
SCALE	_____ CHIEF, TRAFFIC OPERATIONS SECTION
NTS	STANDARD TCP-105.01 _____ OF _____ SHEETS



NOTE: ACCESS POINTS WITHIN LANE CLOSURE SHALL BE CONTROLLED BY FLAGGER(S)

REFER TO TCP 100.01 FOR SIGN SPACING, TAPER LENGTHS AND BUFFER ZONE LENGTHS

← DIRECTION OF TRAFFIC

○ ○ SIGN

▨ WORK SITE

● FLAGGER

○ TRAFFIC DRUMS OR CONES

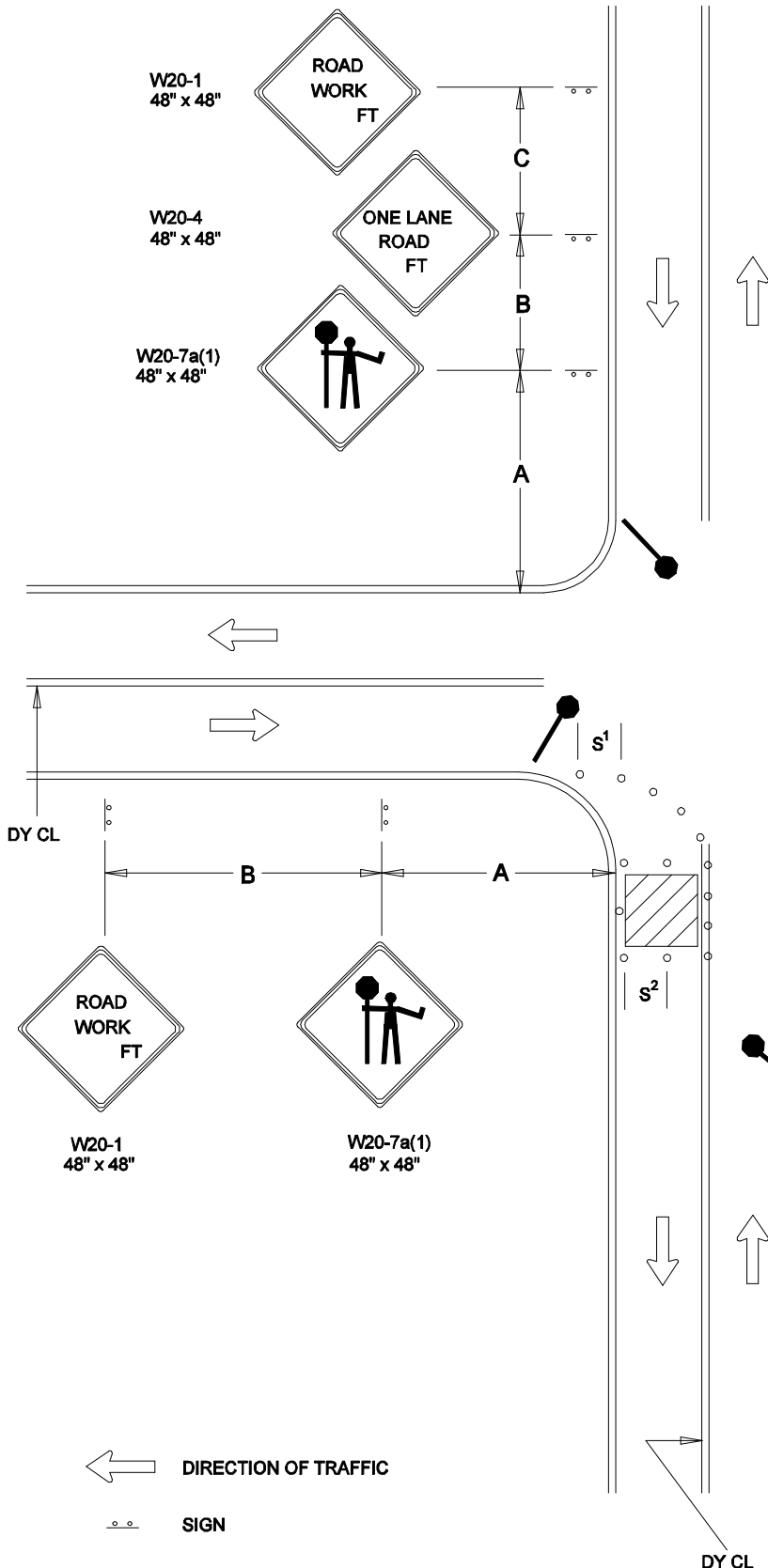
S¹=30 FT.

S²=10 FT.

DY CL

REVISION BY	DATE	APPROVED

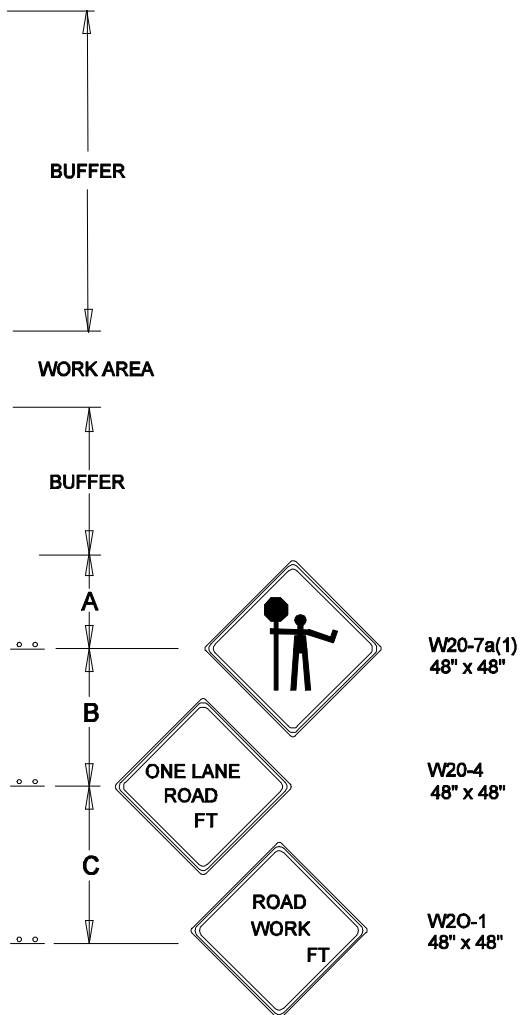
DATE 07-01-14	TRAFFIC OPERATIONS SECTION MONTGOMERY COUNTY, MARYLAND
DES. BY MCDPWT	
DRAWN BY TCLE	FLAGGING CONTROL AT 4 - LEG INTERSECTION (2)
SCALE NTS	APPROVED _____ CHIEF, TRAFFIC OPERATIONS SECTION
	STANDARD TCP-105.02 OF SHEETS



NOTE: ACCESS POINTS WITHIN LANE CLOSURE SHALL BE CONTROLLED BY FLAGGER(S)

REFER TO TCP 100.01 FOR SIGN SPACING, TAPER LENGTHS AND BUFFER ZONE LENGTHS

- DIRECTION OF TRAFFIC
- SIGN
- WORK SITE
- FLAGGER
- TRAFFIC DRUMS OR CONES
- $S^1 = 30$ FT.
- $S^2 = 10$ FT.



DY CL			DATE	TRAFFIC OPERATIONS SECTION MONTGOMERY COUNTY, MARYLAND
			07-01-14	
REVISION BY	DATE	APPROVED	DES. BY	FLAGGING CONTROL AT 3 - LEG INTERSECTION (1)
			MCDPWT	
			DRAWN BY	
			TCLE	
			SCALE	
NTS	APPROVED			
	_____ CHIEF, TRAFFIC OPERATIONS SECTION			
			STANDARD TCP-105.03 ____ OF ____ SHEETS	

W20-1
48" x 48"



W20-4
48" x 48"



W20-7a(1)
48" x 48"



C

B

A

BUFFER

NOTE: ACCESS POINTS WITHIN LANE CLOSURE
SHALL BE CONTROLLED BY FLAGGER(S)

REFER TO TCP 100.01 FOR SIGN
SPACING, TAPER LENGTHS AND
BUFFER ZONE LENGTHS

W20-7a(1)
48" x 48"



W20-1
48" x 48"



A

B

DY CL

WORK AREA

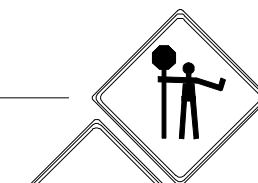
BUFFER

50' TO 100'

A

B

C



W20-7a(1)
48" x 48"

W20-4
48" x 48"

W20-1
48" x 48"



DIRECTION OF TRAFFIC



SIGN



WORK SITE



FLAGGER

TRAFFIC DRUMS
OR CONES

S¹=30 FT.

S²=10 FT.

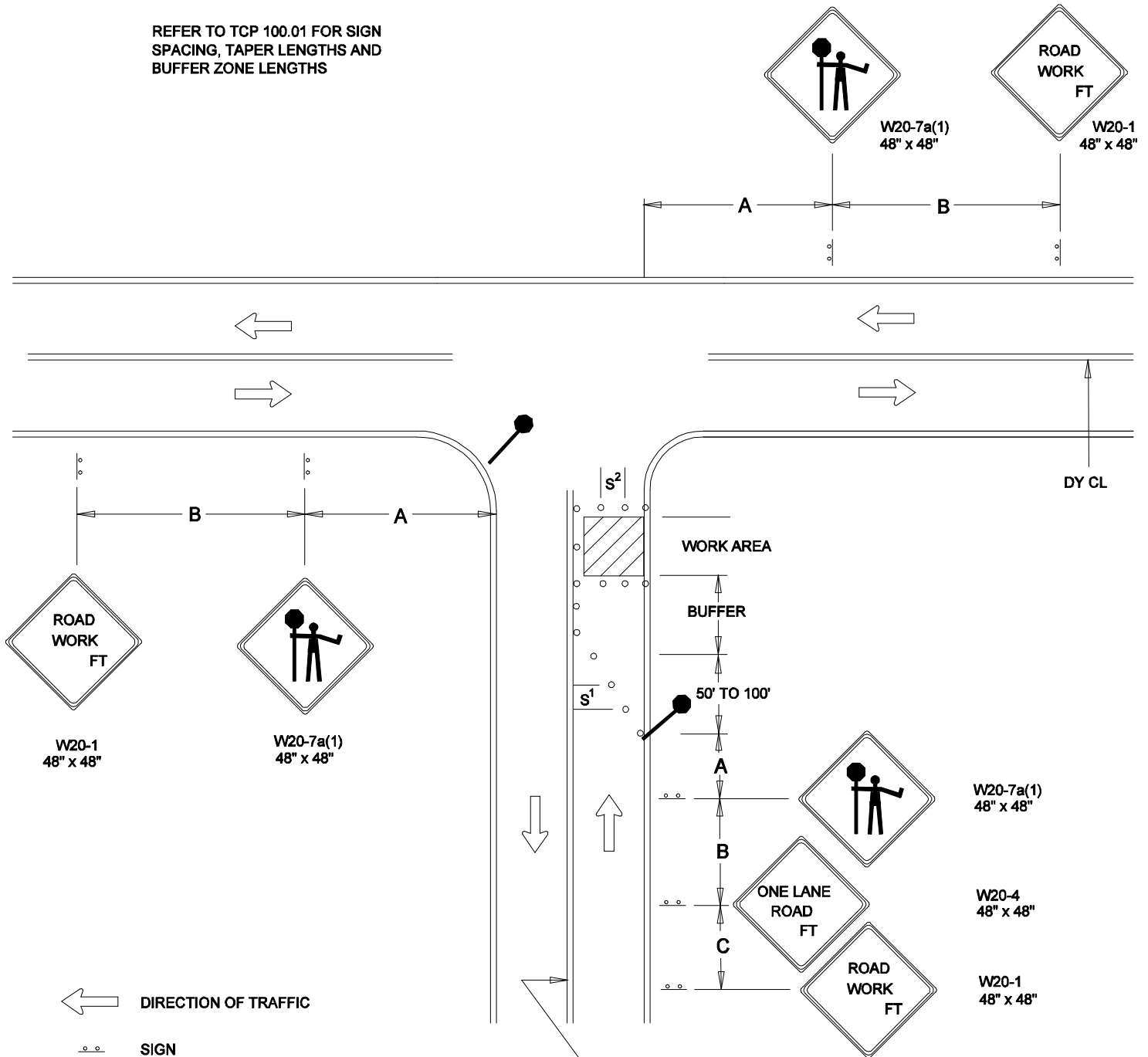
DY CL

REVISION BY	DATE	APPROVED

DATE 07-01-14	TRAFFIC OPERATIONS SECTION MONTGOMERY COUNTY, MARYLAND
DES. BY MCDPWT	
DRAWN BY TCLE	FLAGGING CONTROL AT 3 - LEG INTERSECTION (2)
SCALE NTS	APPROVED _____ CHIEF, TRAFFIC OPERATIONS SECTION
STANDARD TCP-105.04 _____ OF _____ SHEETS	

NOTE: ACCESS POINTS WITHIN LANE CLOSURE
SHALL BE CONTROLLED BY FLAGGER(S)

REFER TO TCP 100.01 FOR SIGN
SPACING, TAPER LENGTHS AND
BUFFER ZONE LENGTHS



← DIRECTION OF TRAFFIC

○ SIGN

▨ WORK SITE

● FLAGGER

○ TRAFFIC DRUMS
OR CONES

$S^1=30$ FT.

$S^2=10$ FT.

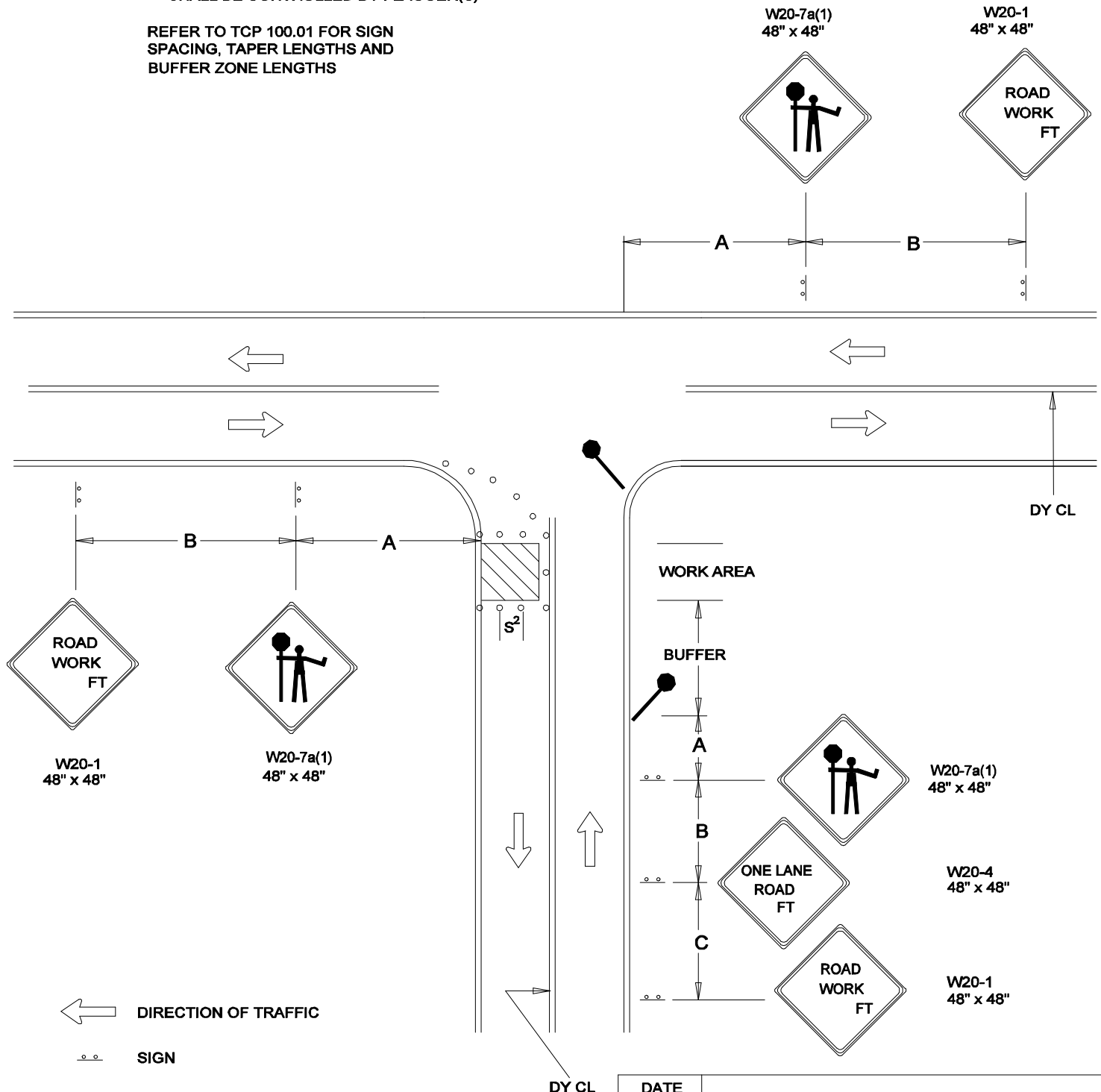
DY CL

DATE	07-01-14	TRAFFIC OPERATIONS SECTION MONTGOMERY COUNTY, MARYLAND	
DES. BY	MCDPWT		
DRAWN BY	TCLE	FLAGGING CONTROL AT 3 - LEG INTERSECTION (3)	
SCALE	NTS	APPROVED	
		CHIEF, TRAFFIC OPERATIONS SECTION	
		STANDARD TCP-105.05 OF SHEETS	

REVISION BY	DATE	APPROVED

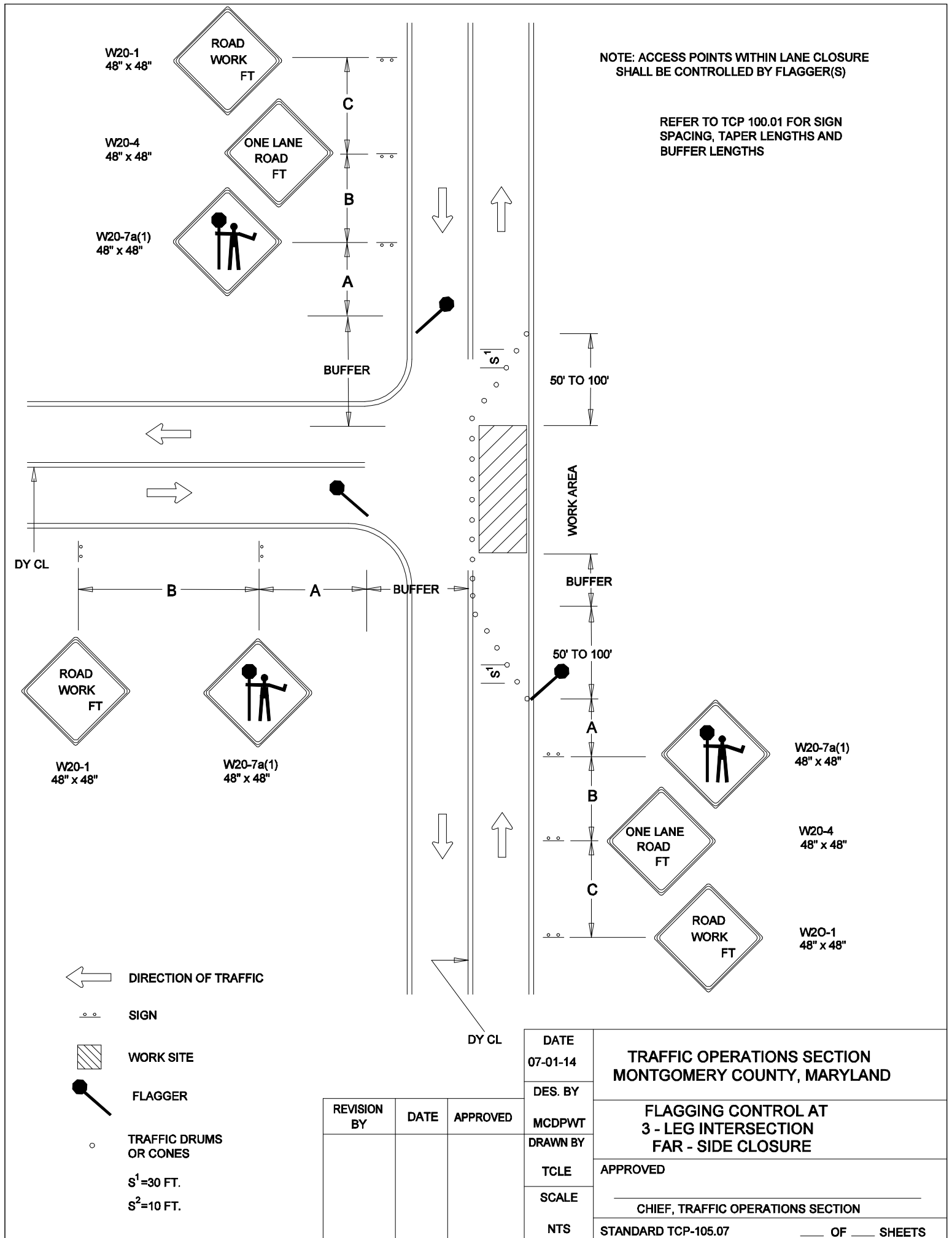
NOTE: ACCESS POINTS WITHIN LANE CLOSURE
SHALL BE CONTROLLED BY FLAGGER(S)

REFER TO TCP 100.01 FOR SIGN
SPACING, TAPER LENGTHS AND
BUFFER ZONE LENGTHS



REVISION BY	DATE	APPROVED

DATE 07-01-14	TRAFFIC OPERATIONS SECTION MONTGOMERY COUNTY, MARYLAND
DES. BY MCDPWT	
DRAWN BY TCLE	FLAGGING CONTROL AT 3 - LEG INTERSECTION (4)
SCALE NTS	APPROVED _____ CHIEF, TRAFFIC OPERATIONS SECTION
	STANDARD TCP-105.06 _____ OF _____ SHEETS



NOTE: ACCESS POINTS WITHIN LANE CLOSURE SHALL BE CONTROLLED BY FLAGGER(S)

REFER TO TCP 100.01 FOR SIGN SPACING, TAPER LENGTHS AND BUFFER LENGTHS

← DIRECTION OF TRAFFIC

○ ○ SIGN

▨ WORK SITE

● FLAGGER

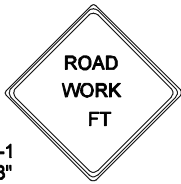
○ ○ TRAFFIC DRUMS OR CONES

S¹=30 FT.

S²=10 FT.

REVISION BY	DATE	APPROVED

DATE	07-01-14	TRAFFIC OPERATIONS SECTION MONTGOMERY COUNTY, MARYLAND	
DES. BY	MCDPWT		
DRAWN BY	TCLE	FLAGGING CONTROL AT 3 - LEG INTERSECTION FAR - SIDE CLOSURE	
SCALE	NTS	APPROVED	
		_____ CHIEF, TRAFFIC OPERATIONS SECTION	
		STANDARD TCP-105.07 _____ OF _____ SHEETS	



W20-1
48" X 48"

REFER TO TCP 100.01 FOR SIGN
SPACING AND TAPER LENGTHS



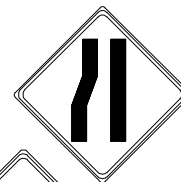
W20-1
48" X 48"



W20-1
48" X 48"

WORK AREA

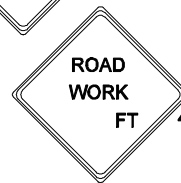
TAPER



W4-2
48" X 48"



W20-5
48" X 48"



W20-1
48" X 48"

← DIRECTION OF TRAFFIC

○ ○ SIGN

▨ WORK SITE

○ ○ ○ ARROW PANEL

○ TRAFFIC DRUMS
OR CONES

S¹ = 30 FT

S² = 10 FT

REVISION BY	DATE	APPROVED

DATE 07-01-14	TRAFFIC OPERATIONS SECTION MONTGOMERY COUNTY, MARYLAND
DES. BY MCDPWT	
DRAWN BY TCLE	TRAFFIC CONTROL FOR LEFT TURN LANE CLOSURE
SCALE NTS	APPROVED _____ CHIEF, TRAFFIC OPERATIONS SECTION
STANDARD TCP-106.01 _____ OF _____ SHEETS	

W20-1
48" X 48"



REFER TO TCP 100.01 FOR SIGN
SPACING AND TAPER LENGTHS

W20-1
48" X 48"



W20-1
48" X 48"

WORK AREA



W20-5 (MOD)
48" X 48"



W20-1
48" X 48"



DIRECTION OF TRAFFIC



SIGN



WORK SITE



ARROW PANEL



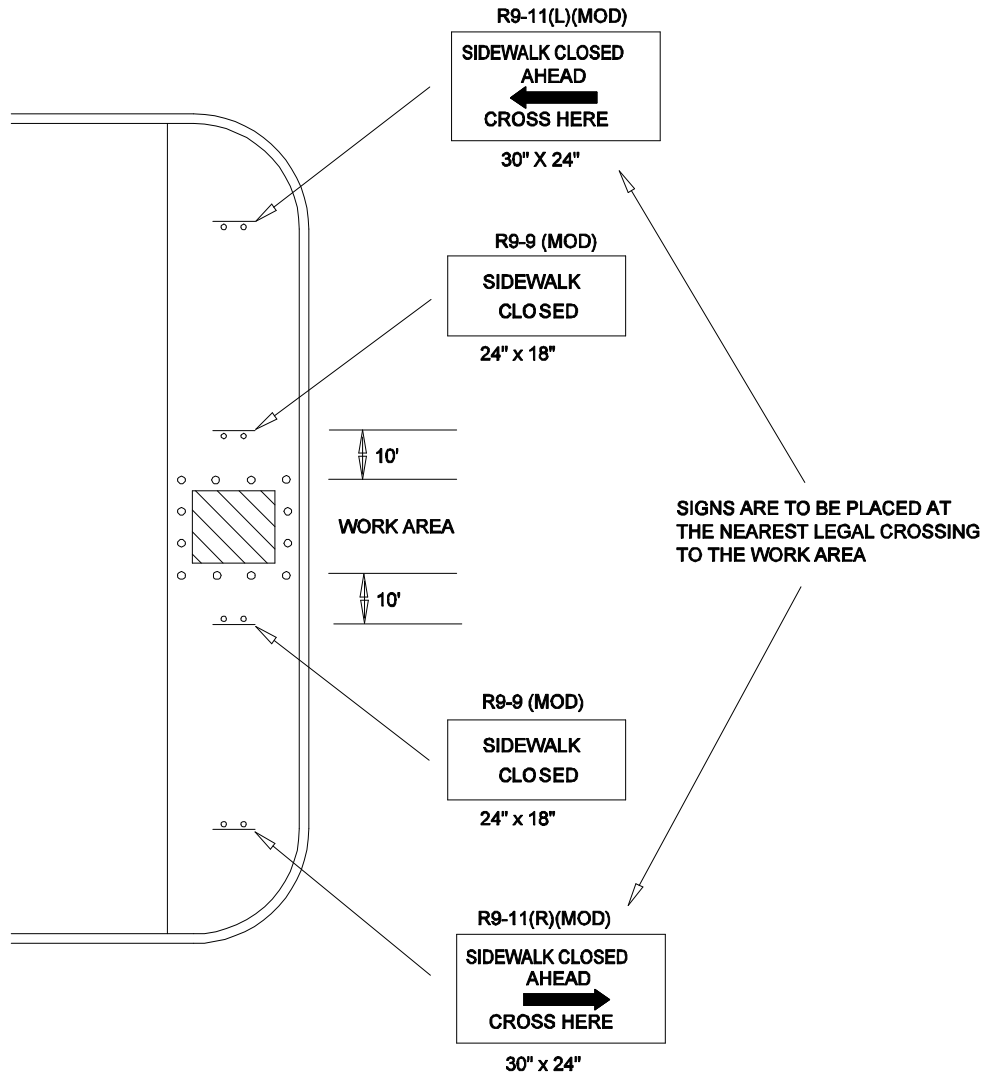
TRAFFIC DRUMS
OR CONES




S¹ = 30 FT

S² = 10 FT

REVISION BY	DATE	APPROVED

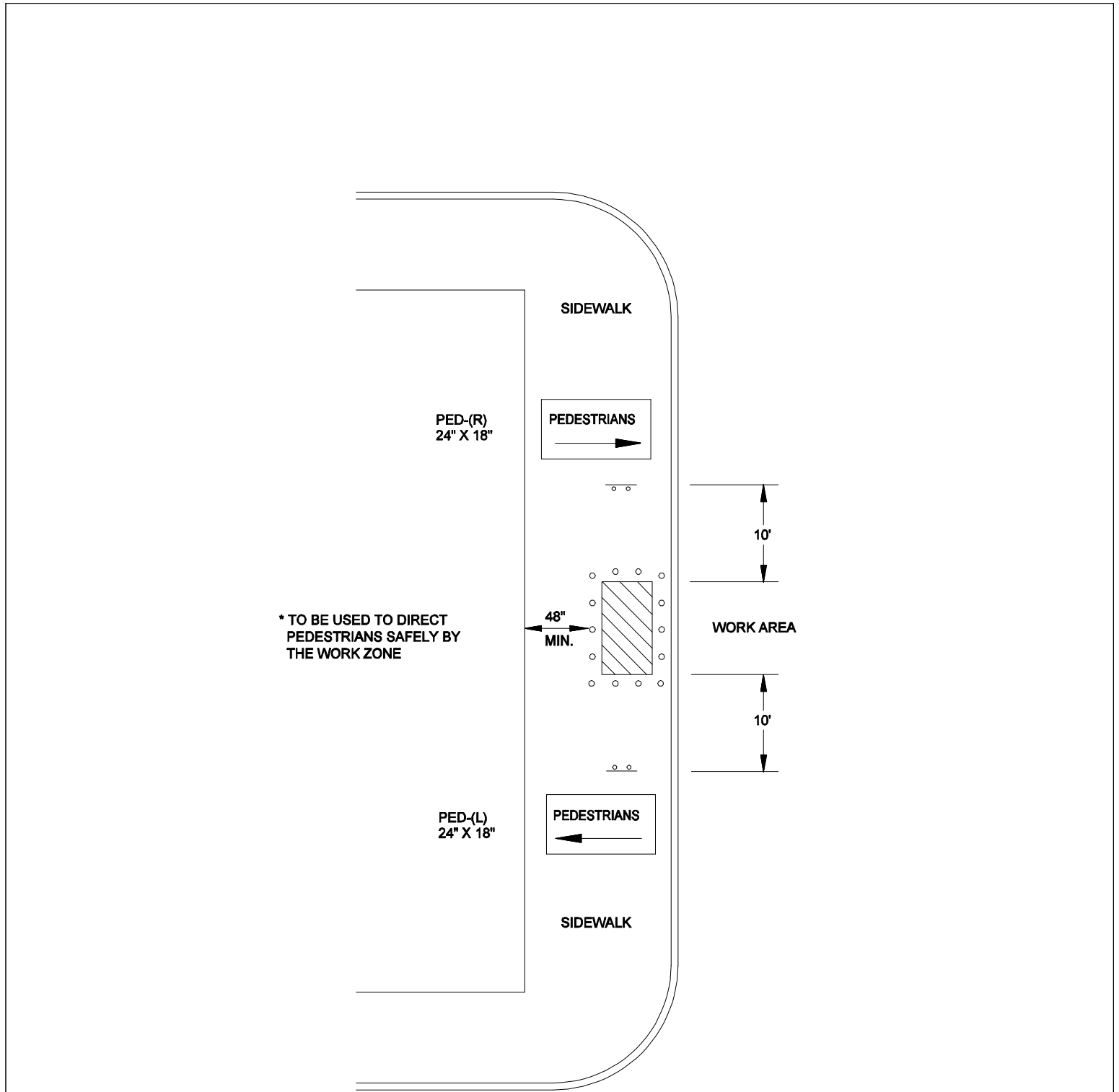
DATE 07-01-14	TRAFFIC OPERATIONS SECTION MONTGOMERY COUNTY, MARYLAND
DES. BY MCDPWT	
DRAWN BY TCLE	TRAFFIC CONTROL FOR RIGHT TURN LANE CLOSURE
SCALE NTS	APPROVED _____ CHIEF, TRAFFIC OPERATIONS SECTION
STANDARD TCP-106.02 _____ OF _____ SHEETS	

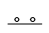
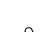


-  **SIGN**
-  **WORK SITE**
-  **TRAFFIC DRUMS OR CONES**

REVISION BY	DATE	APPROVED

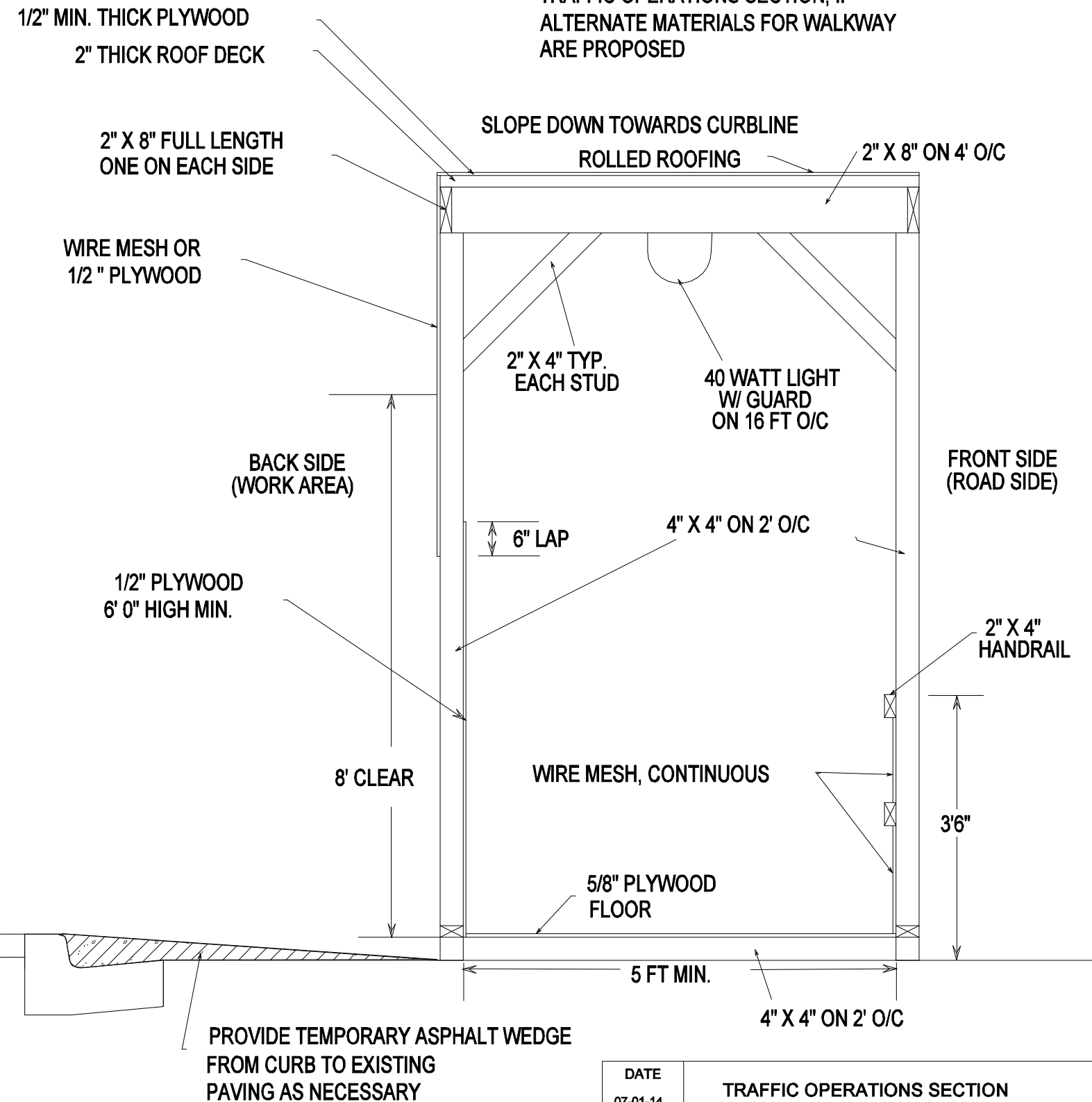
DATE	TRAFFIC OPERATIONS SECTION MONTGOMERY COUNTY, MARYLAND	
07-01-14		
DES. BY	PEDESTRIAN CONTROL FOR TEMPORARY SIDEWALK CLOSURE	
MCDPWT		
DRAWN BY	APPROVED	
TCLE		
SCALE	CHIEF, TRAFFIC OPERATIONS SECTION	
NTS		
STANDARD TCP-107.01		___ OF ___ SHEETS



-  SIGN
-  WORK SITE
-  TRAFFIC DRUMS OR CONES

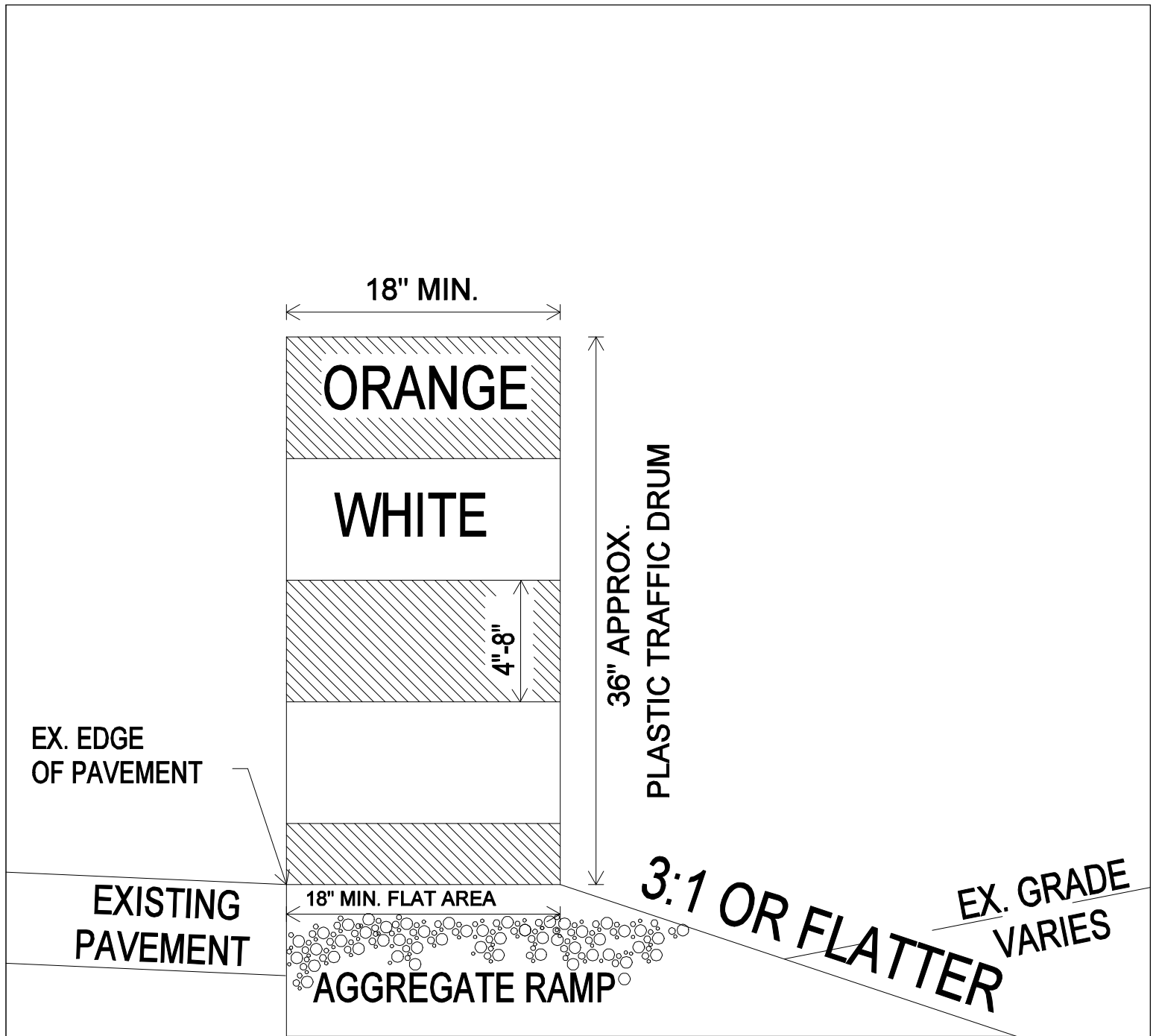
			DATE	TRAFFIC OPERATIONS SECTION MONTGOMERY COUNTY, MARYLAND	
			07-01-14		
			DES. BY	PEDESTRIAN CONTROL FOR SIDEWALK BY-PASS	
			MCDPWT		
REVISION BY	DATE	APPROVED	DRAWN BY	APPROVED	
			TCLE		
			SCALE	CHIEF, TRAFFIC OPERATIONS SECTION	
			NTS		
			STANDARD TCP-107.02 _____ OF _____ SHEETS		

CONTRACTOR MUST PROVIDE SHOP
DRAWING DETAIL OF COVERED WALKWAY
FOR REVIEW AND APPROVAL TO THE
TRAFFIC OPERATIONS SECTION, IF
ALTERNATE MATERIALS FOR WALKWAY
ARE PROPOSED



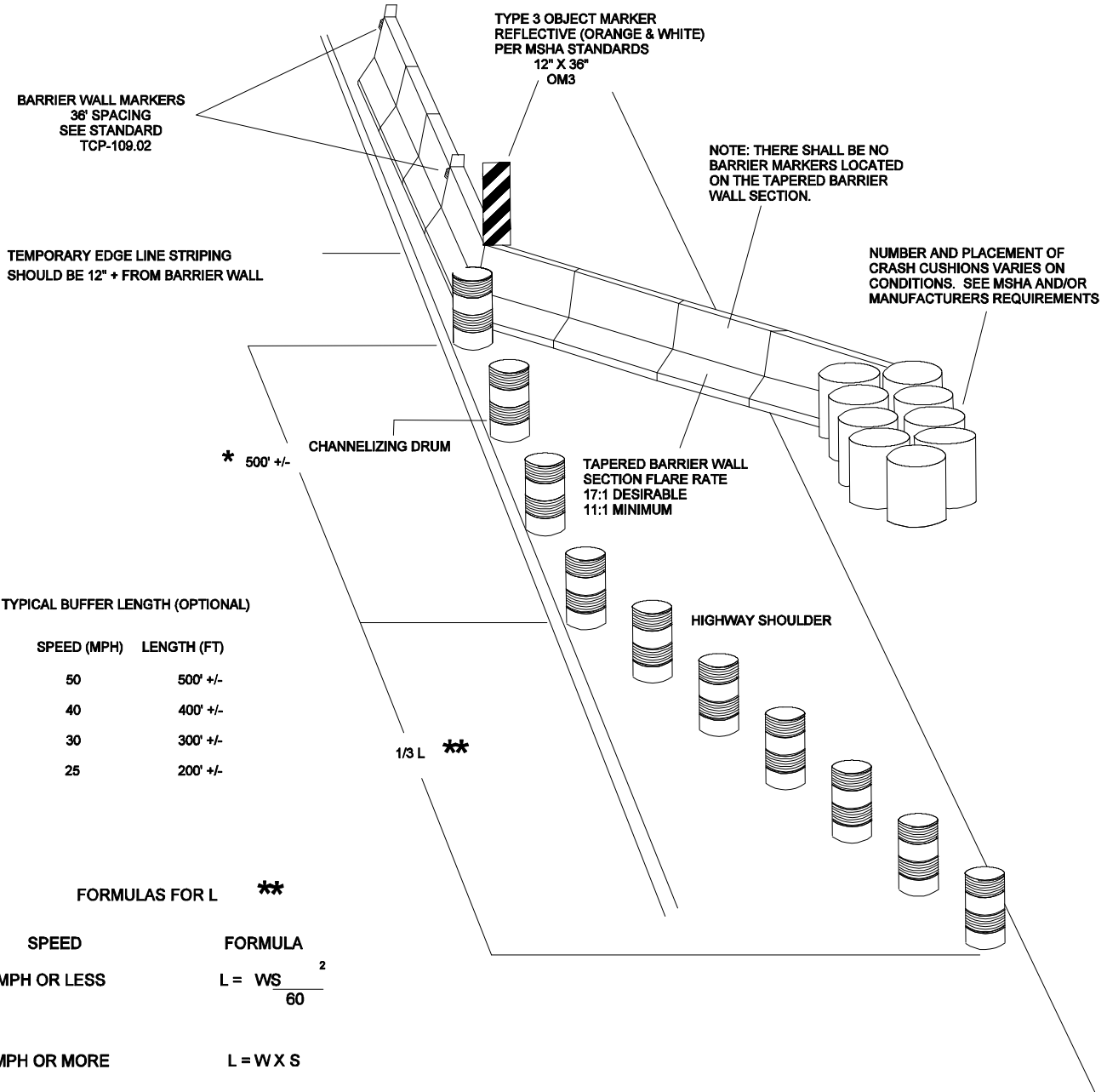
REVISION BY	DATE	APPROVED

DATE 07-01-14	TRAFFIC OPERATIONS SECTION MONTGOMERY COUNTY, MARYLAND
DES. BY MCDPWT	
DRAWN BY TCLE	COVERED WALKWAY
SCALE NTS	APPROVED CHIEF, TRAFFIC OPERATIONS SECTION
STANDARD TCP-107.03 _____ OF _____ SHEETS	



REVISION BY	DATE	APPROVED

DATE 07-01-14	TRAFFIC OPERATIONS SECTION MONTGOMERY COUNTY, MARYLAND
DES. BY MCDPWT	
DRAWN BY TCLE	TEMPORARY AGGREGATE RAMP DETAIL FOR NON-WORKING HOURS
SCALE NTS	APPROVED _____ CHIEF, TRAFFIC OPERATIONS SECTION
STANDARD TCP-108.01 _____ OF _____ SHEETS	



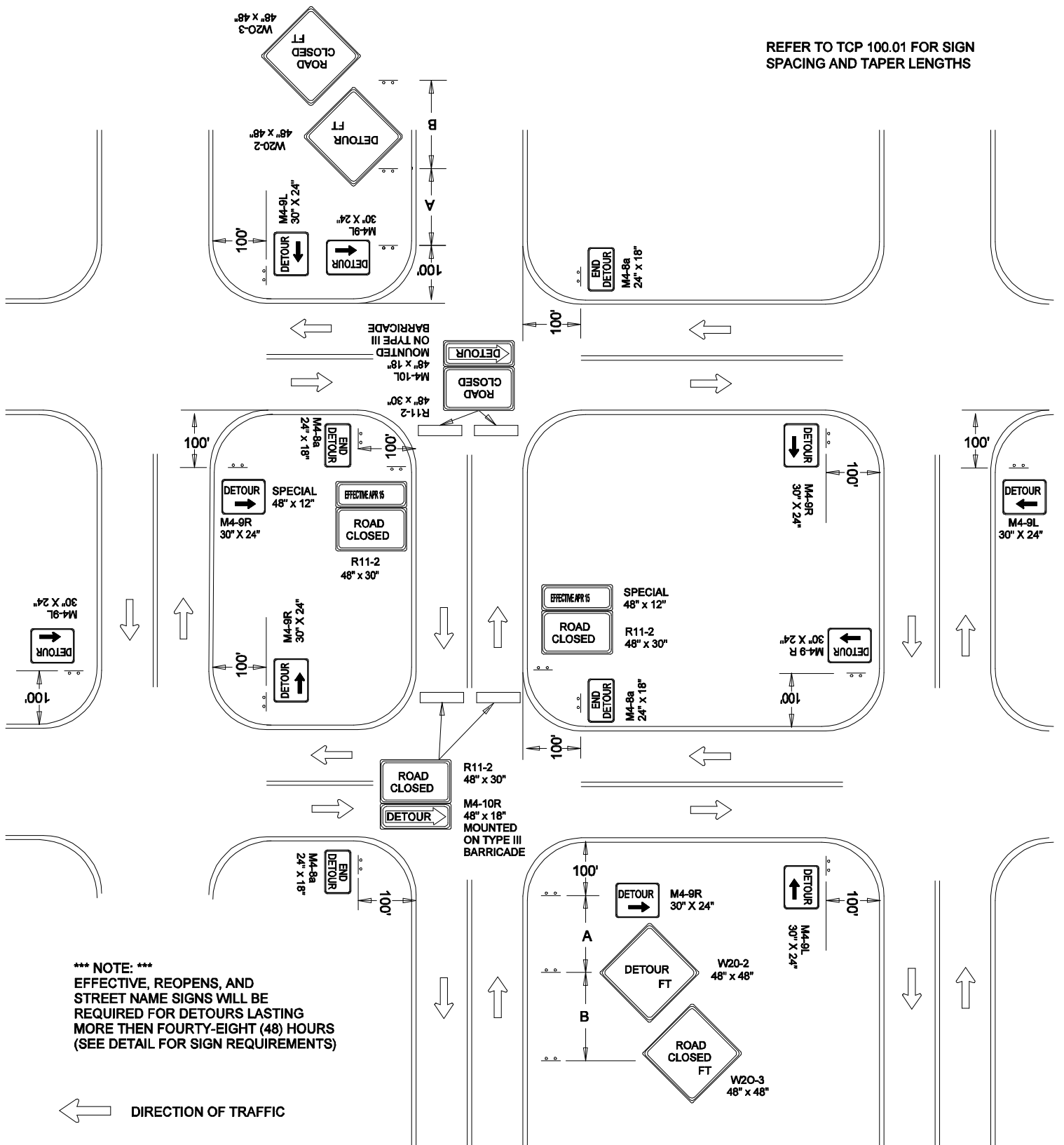
L = TAPER LENGTH IN FEET

W = WIDTH OF OFFSET IN FEET

S = POSTED SPEED, OFF-PEAK
85TH PERCENTILE SPEED PRIOR
TO WORK STARTING, OR THE
ANTICIPATED OPERATING SPEED
IN MPH.

			DATE 07-01-14	TRAFFIC OPERATIONS SECTION MONTGOMERY COUNTY, MARYLAND
			DES. BY MCDPWT	
REVISION BY	DATE	APPROVED	DRAWN BY TCLE	ADVANCE CHANNELIZATION AND PROTECTION FOR BARRIER FLARE SECTIONS
			SCALE NTS	APPROVED _____ CHIEF, TRAFFIC OPERATIONS SECTION
			STANDARD TCP-109.01 _____ OF _____ SHEETS	

REFER TO TCP 100.01 FOR SIGN
SPACING AND TAPER LENGTHS



*** NOTE: ***
EFFECTIVE, REOPENS, AND
STREET NAME SIGNS WILL BE
REQUIRED FOR DETOURS LASTING
MORE THEN FOURTY-EIGHT (48) HOURS
(SEE DETAIL FOR SIGN REQUIREMENTS)

← DIRECTION OF TRAFFIC

— SIGN

▨ WORK SITE

▬ TYPE III BARRICADE

○ TRAFFIC DRUMS
OR CONES

$S^1=30$ FT.

$S^2=10$ FT.

REVISION BY	DATE	APPROVED

DATE 07-01-14	TRAFFIC OPERATIONS SECTION MONTGOMERY COUNTY, MARYLAND
DES. BY MCDPWT	
DRAWN BY TCLE	TRAFFIC CONTROL FOR TEMPORARY DETOUR
SCALE NTS	APPROVED _____ CHIEF, TRAFFIC OPERATIONS SECTION
	STANDARD TCP-110.02 OF SHEETS

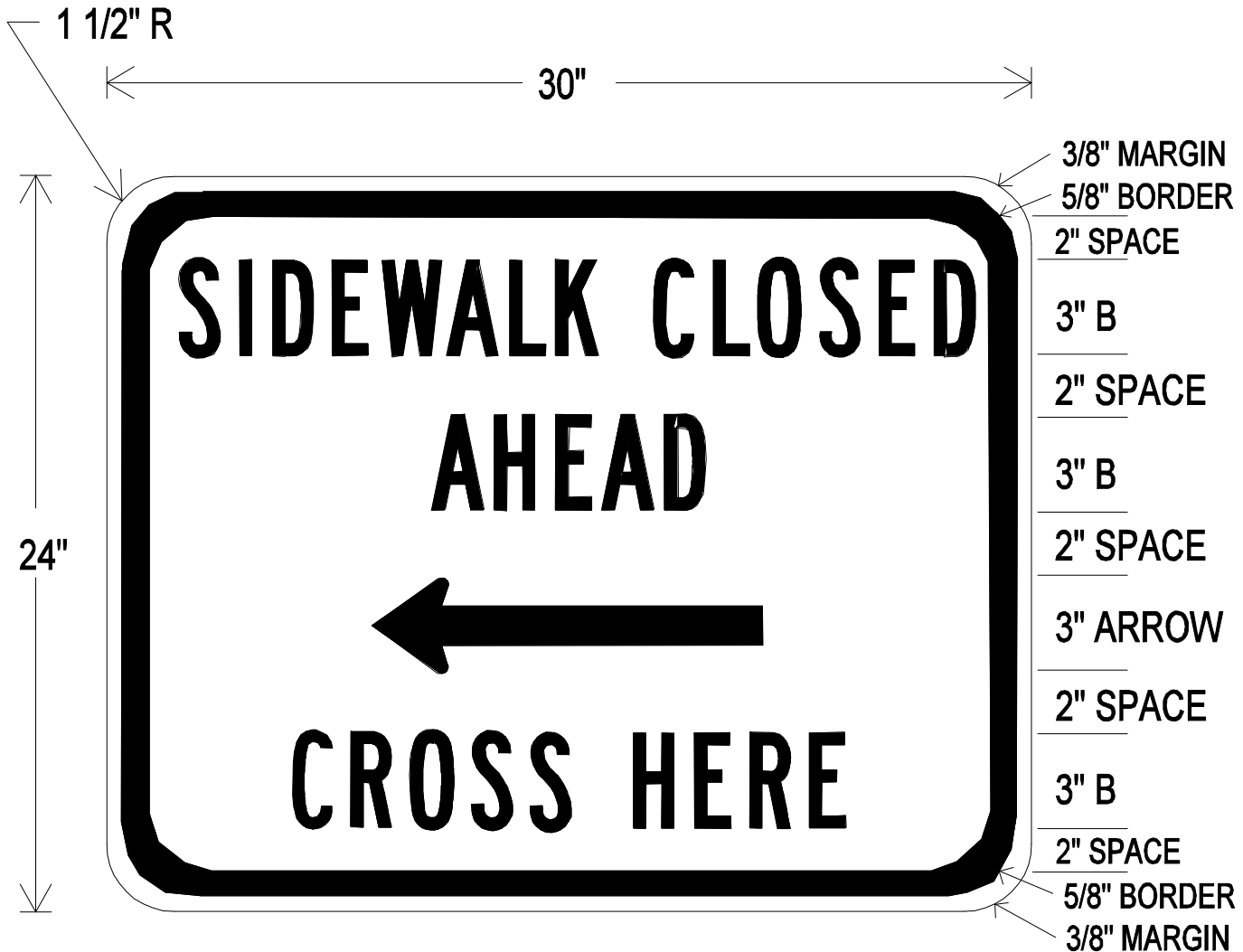
R9-9 (MOD)



BLACK LEGEND AND BORDER
ON WHITE BACKGROUND

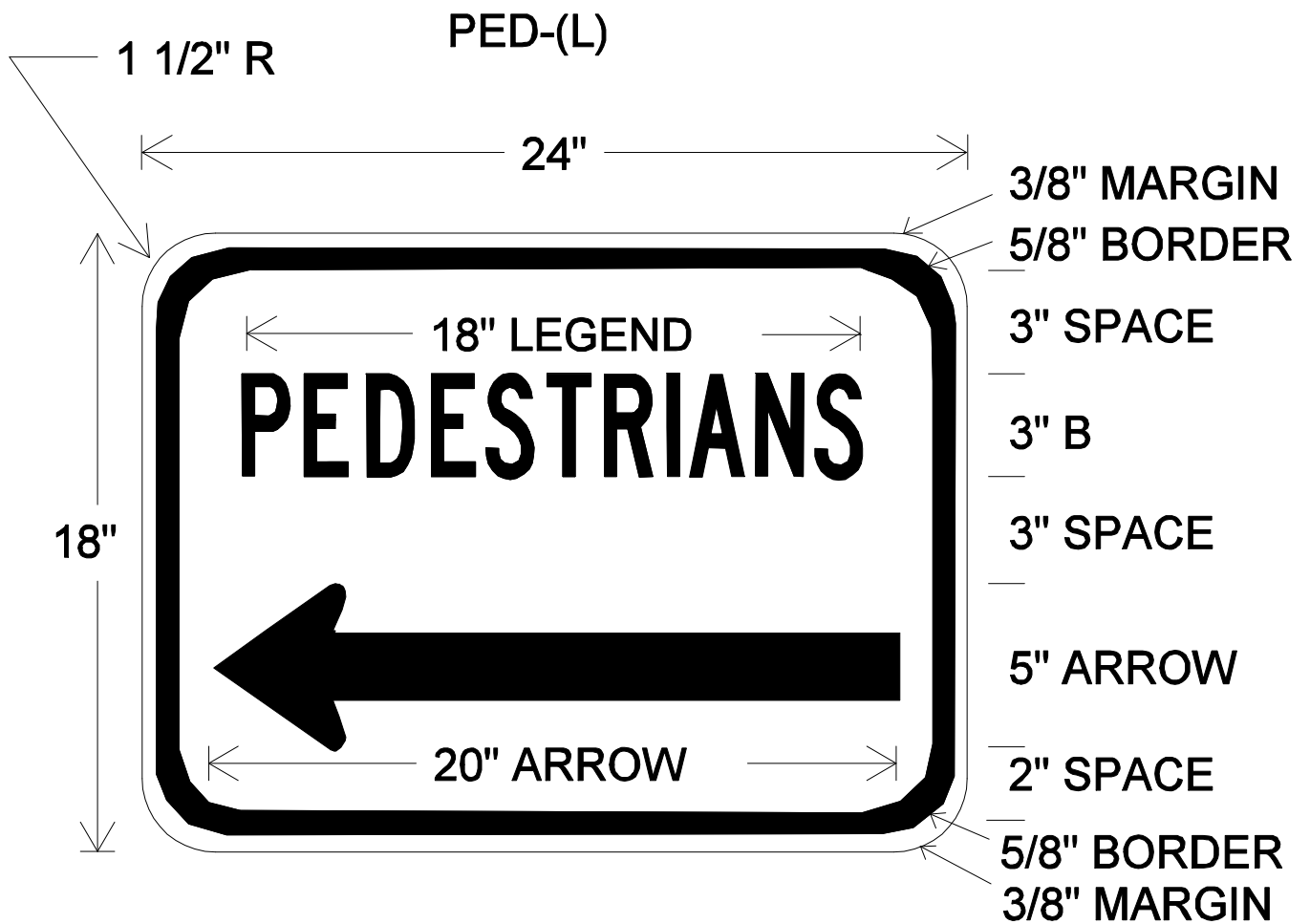
			DATE 07-01-14	TRAFFIC OPERATIONS SECTION MONTGOMERY COUNTY, MARYLAND
			DES. BY MCDPWT	
REVISION BY	DATE	APPROVED	DRAWN BY TCLE	SIGN DETAIL FOR TEMPORARY SIDEWALK CLOSURE
			SCALE NTS	APPROVED _____ CHIEF, TRAFFIC OPERATIONS SECTION
			STANDARD TCP-107.01.01 _____ OF _____ SHEETS	

R9-11(L)(MOD)

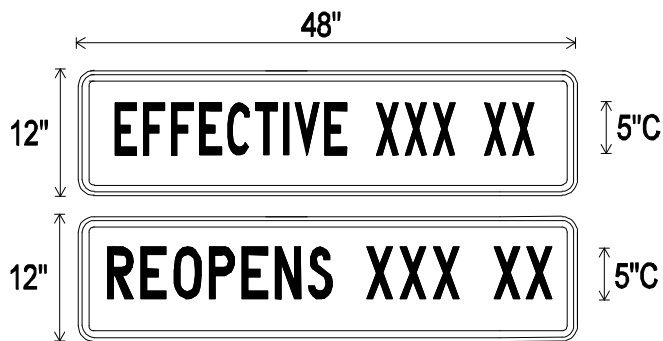


**BLACK LEGEND AND BORDER
ON WHITE BACKGROUND**

			DATE 07-01-14	TRAFFIC OPERATIONS SECTION MONTGOMERY COUNTY, MARYLAND	
			DES. BY MCDPWT	SIGN DETAIL FOR TEMPORARY SIDEWALK CLOSURE	
			DRAWN BY TCLE		
			SCALE NTS	APPROVED _____ CHIEF, TRAFFIC OPERATIONS SECTION	
REVISION BY	DATE	APPROVED		STANDARD TCP-107.01.02 ____ OF ____ SHEETS	

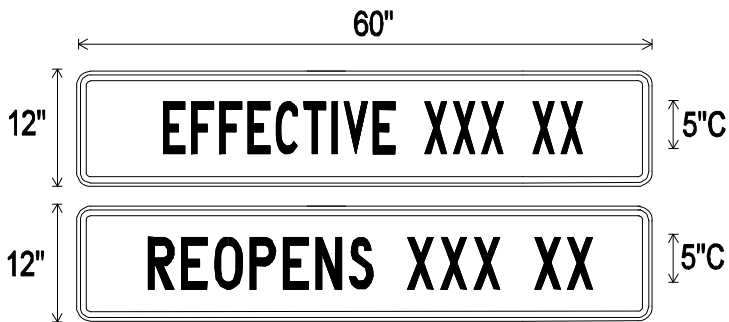


			DATE 07-01-14	TRAFFIC OPERATIONS SECTION MONTGOMERY COUNTY, MARYLAND
			DES. BY MCDPWT	
REVISION BY	DATE	APPROVED	DRAWN BY TCLE	SIGN DETAIL FOR PEDESTRIAN SIDEWALK BY-PASS
			SCALE NTS	
				APPROVED _____ CHIEF, TRAFFIC OPERATIONS SECTION
				STANDARD TCP-107.02.01 _____ OF _____ SHEETS



BLACK LEGEND ON ORANGE BACKGROUND

48" X 12" SHALL BE MOUNTED ATOP
R11-2 ROAD CLOSED SIGNS



BLACK LEGEND ON ORANGE BACKGROUND

60" X 12" SHALL BE MOUNTED ATOP
R11-3 & R11-4 ROAD CLOSED SIGNS

ROAD CLOSED AND EFFECTIVE SIGNS SHALL BE PLACED TWO (2) WEEKS PRIOR TO THE ROAD CLOSURE. THE EFFECTIVE SIGN SHALL BE REMOVED AND REPLACED WITH THE REOPENS SIGN TWO DAYS AFTER THE ACTUAL DATE OF THE ROAD CLOSURE.



BLACK LEGEND ON WHITE BACKGROUND

FOR EXTENDED CLOSURES A "STREET NAME" SIGN
SHALL BE MOUNTED ATOP ALL M4-9 (DETOUR) SIGNS
ALONG ROADWAYS USED FOR THE DETOUR

IF ADDITIONAL LINES OF TEXT ARE NECESSARY,
INCREASE HEIGHT IN INCREMENTS OF 12"

			DATE 07-01-14	TRAFFIC OPERATIONS SECTION MONTGOMERY COUNTY, MARYLAND
			DES. BY MCDPWT	
REVISION BY	DATE	APPROVED	DRAWN BY	SIGN DETAILS FOR TEMPORARY DETOUR
			TCLE	
			SCALE	_____ CHIEF, TRAFFIC OPERATIONS SECTION
			NTS	STANDARD TCP-110.02.01 ____ OF ____ SHEETS