

NOTE:
 WORK VEHICLES SHALL DISPLAY
 ROTATING AND /OR FLASHING LIGHT
 ATOP VEHICLES AND FLASHING
 WARNING LIGHTS IN FRONT AND REAR.

VEHICLES SHALL NOT PROCEED
 MORE THAN THREE (3) MILES AHEAD
 OF THE ADVANCE WARNING
 SIGNS.

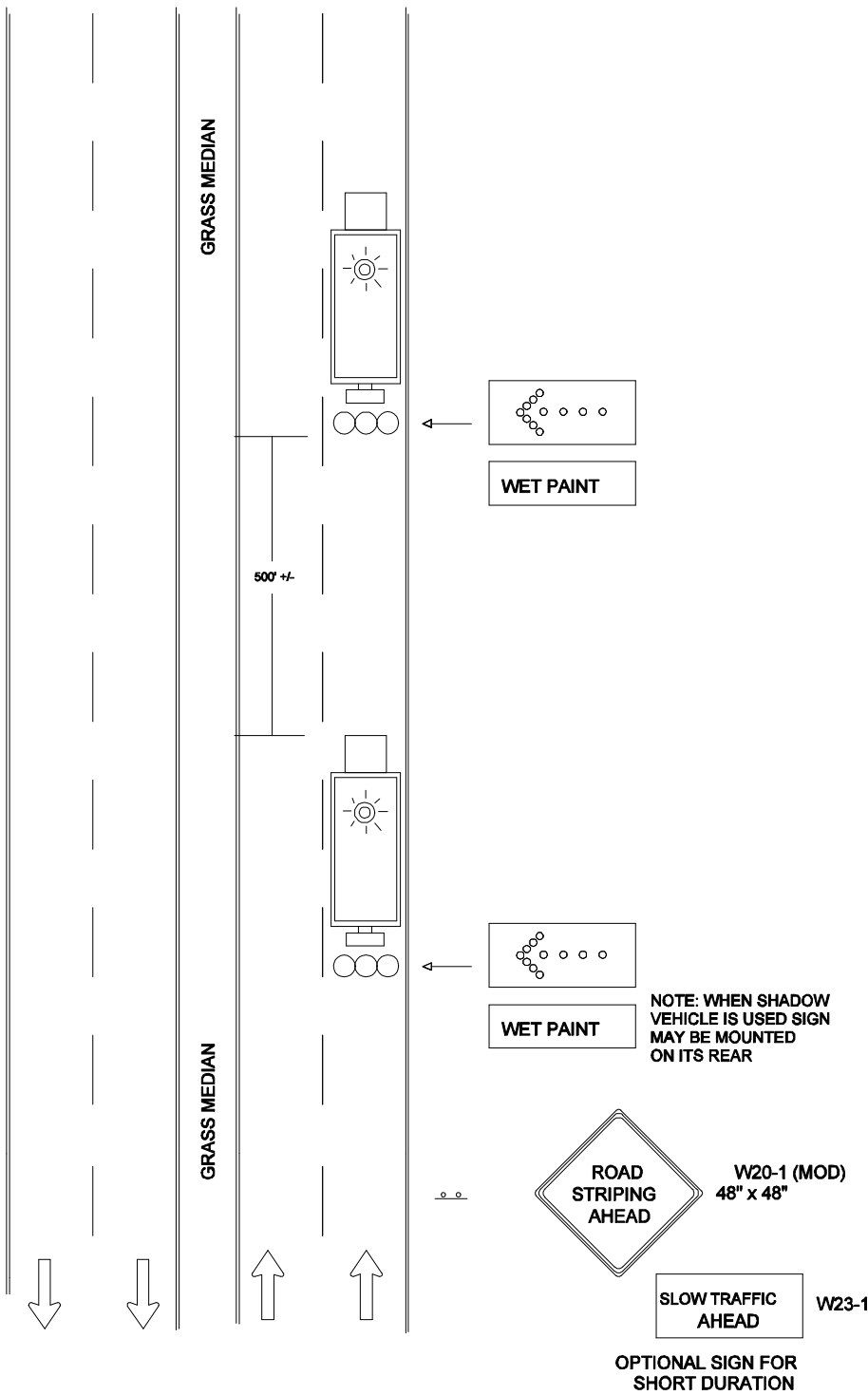
VEHICLES SHOULD NOT OCCUPY OR BE
 STOPPED IN A LANE BEYOND A HORIZONTAL
 CURVE OR A VERTICAL CURVE (HILL).

IF STOPPING IS NECESSARY, FLAGGERS SHALL
 BE POSITIONED PRIOR TO STOPPING WORK
 VEHICLES.

THE FLAGGER SHALL BE POSITIONED IN
 ADVANCE OF THE CURVE (HORIZONTAL OR
 VERTICAL) TO PROVIDE MOTORIST ADEQUATE
 ADVANCE WARNING OF TEMPORARY WORK ZONE.

NO WORK OPERATIONS WHICH INTERFERES
 WITH THE FLOW OF TRAFFIC MAY TAKE PLACE
 DURING PEAK HOURS MONDAY - FRIDAY
 6 A.M. - 9 A.M. AND 3:30 P.M. - 7 P.M.

FOR PAVEMENT MARKING MATERIALS HAVING
 SLOW DRYING TIMES ADDITIONAL BACK-UP
 VEHICLES TO FOLLOW TRUCK MAY
 BE NECESSARY.



			DATE	TRAFFIC OPERATIONS SECTION MONTGOMERY COUNTY, MARYLAND	
			07-01-12		
			DES. BY	TRAFFIC CONTROL FOR MOVING MARKING OPERATION (2)	
			MCDPWT		
REVISION BY	DATE	APPROVED	DRAWN BY	APPROVED	
			TCLE		
			SCALE	CHIEF, TRAFFIC OPERATIONS SECTION	
			NTS	STANDARD TCP-103.06 OF SHEETS	