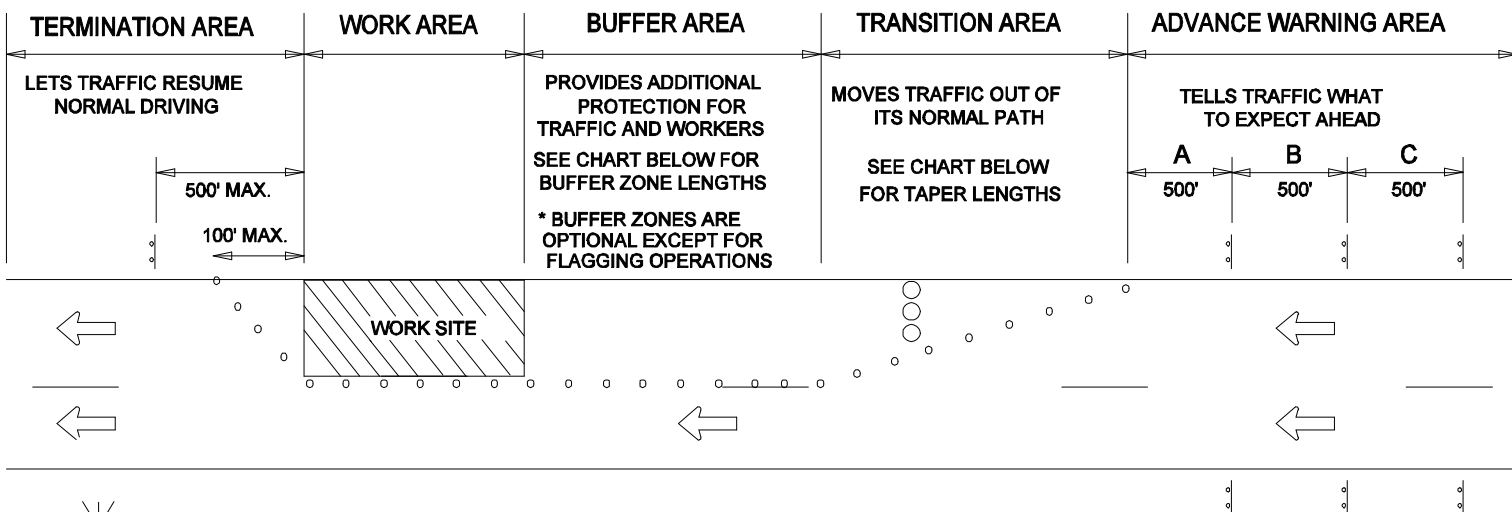
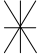


* SPEED M.P.H.	MINIMUM DISTANCE FROM TAPER TO FIRST SIGN	ADDITIONAL SIGNS IN SERIES TO BE SPACED AT A MINIMUM			MINIMUM COMBINED ADVANCED WARNING
	A	B	C	D	
25	200'	200'	200'		600'
30-35	300'	300'	300'		900'
40	500'	500'	500'		1500'
45-65	800'	700'	1100'	2600' (OPTIONAL)	2600'

EXAMPLE: TWO LANES, ONE-WAY ROADWAY, POSTED SPEED LIMIT IS 30 M.P.H.



\* NOTE: THE POSTED SPEED PLUS  
10 MPH SHOULD BE USED FOR THE DESIGN  
OF SIGN SPACING, TAPER AND BUFFER LENGTHS

GUIDELINES FOR TAPER LENGTHS					
 SPEED M.P.H.	TAPER LENGTH			NUMBER OF DEVICES FOR TAPER	SPACING OF DEVICES ALONG TAPER IN FEET
	LANE WIDTH IN FEET				
	10	11	12		
20	70	75	80	5	20
25	105	115	125	6	25
30	150	165	180	7	30
35	205	225	245	8	35
40	270	295	320	9	40
45	450	495	540	13	45
50	500	550	600	13	50
55	550	605	660	13	55
60	600	660	720	13	60
65	650	715	780	13	65

GUIDELINES FOR BUFFER ZONE LENGTHS	
SPEED (MPH)	LENGTH (FEET)
20	35
25	55
30	85
35	120
40	170
45	220
50	280
55	335
60	415
65	485

DATE	TRAFFIC OPERATIONS SECTION MONTGOMERY COUNTY, MARYLAND
07-01-12	
DES. BY	SPACING CHART
MCDPWT	
DRAWN BY	
TCLE	
SCALE	APPROVED
NTS	_____ CHIEF, TRAFFIC OPERATIONS SECTION
	STANDARD TCP-100.01                      ____ OF ____ SHEETS

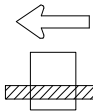
REVISION BY	DATE	APPROVAL

REFER TO TCP 100.01 FOR TAPER LENGTHS

**NOTES:**

PVMS MESSAGES AND PLACEMENT OF THIS  
DEVICE SHALL BE APPROVED BY THE  
TRAFFIC OPERATIONS SECTION

THE EDGE OF THE SIGN BOARD OF THE  
PVMS SHALL BE PLACED A MINIMUM OF  
3' AND NO MORE THAN 8' FROM EDGE LINE



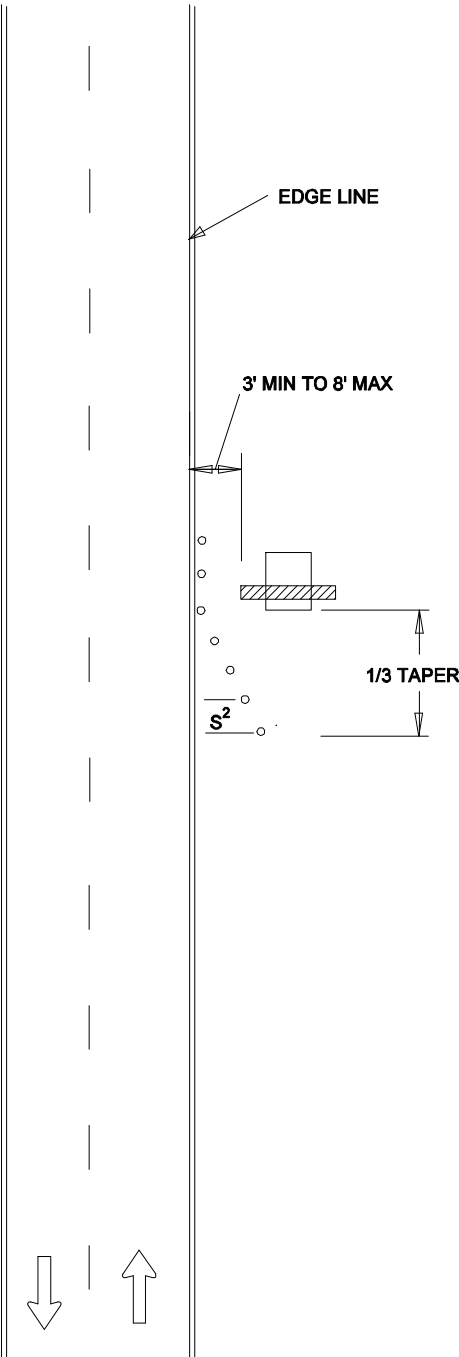
**DIRECTION OF TRAFFIC**

**PORTABLE VARIABLE MESSAGE SIGN (PVMS)**



**TRAFFIC DRUMS  
OR CONES**

**S<sup>2</sup>=10 FT.**

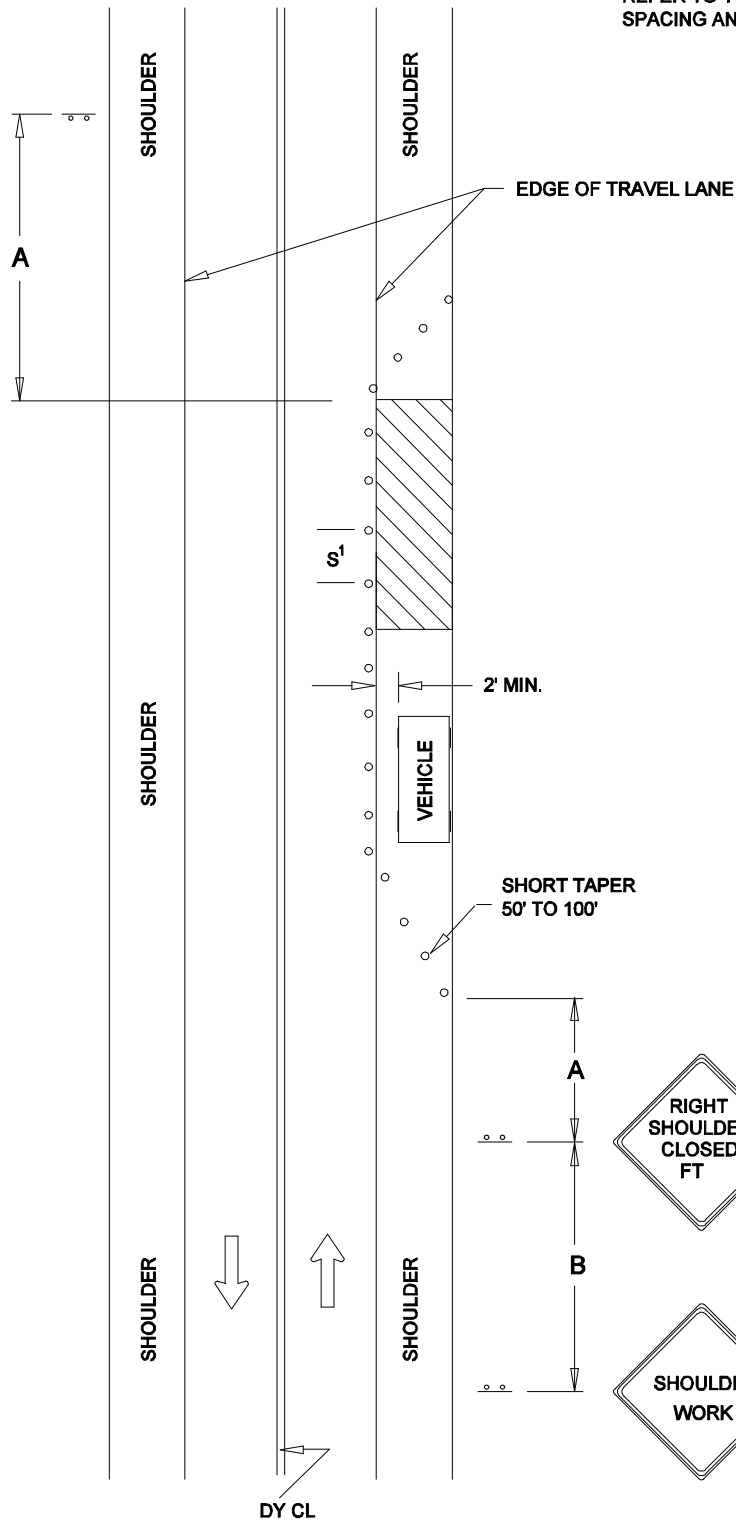


			DATE	TRAFFIC OPERATIONS SECTION MONTGOMERY COUNTY, MARYLAND	
			07-01-12		
			DES. BY	PORTABLE VARIABLE MESSAGE SIGN PLACEMENT	
			MCDPWT		
REVISION BY	DATE	APPROVED	DRAWN BY	APPROVED	
			TCLE		
			SCALE	CHIEF, TRAFFIC OPERATIONS SECTION	
			NTS		
				STANDARD TCP-100.02 _____ OF _____ SHEETS	

REFER TO TCP 100.01 FOR SIGN  
SPACING AND TAPER LENGTHS



W20-1 (MOD)  
48" x 48"



W21-5b  
48" x 48"



W21-5  
48" x 48"



DIRECTION OF TRAFFIC



SIGN



WORK SITE



TRAFFIC DRUMS  
OR CONES

$S^1=30$  FT.

$S^2=10$  FT.

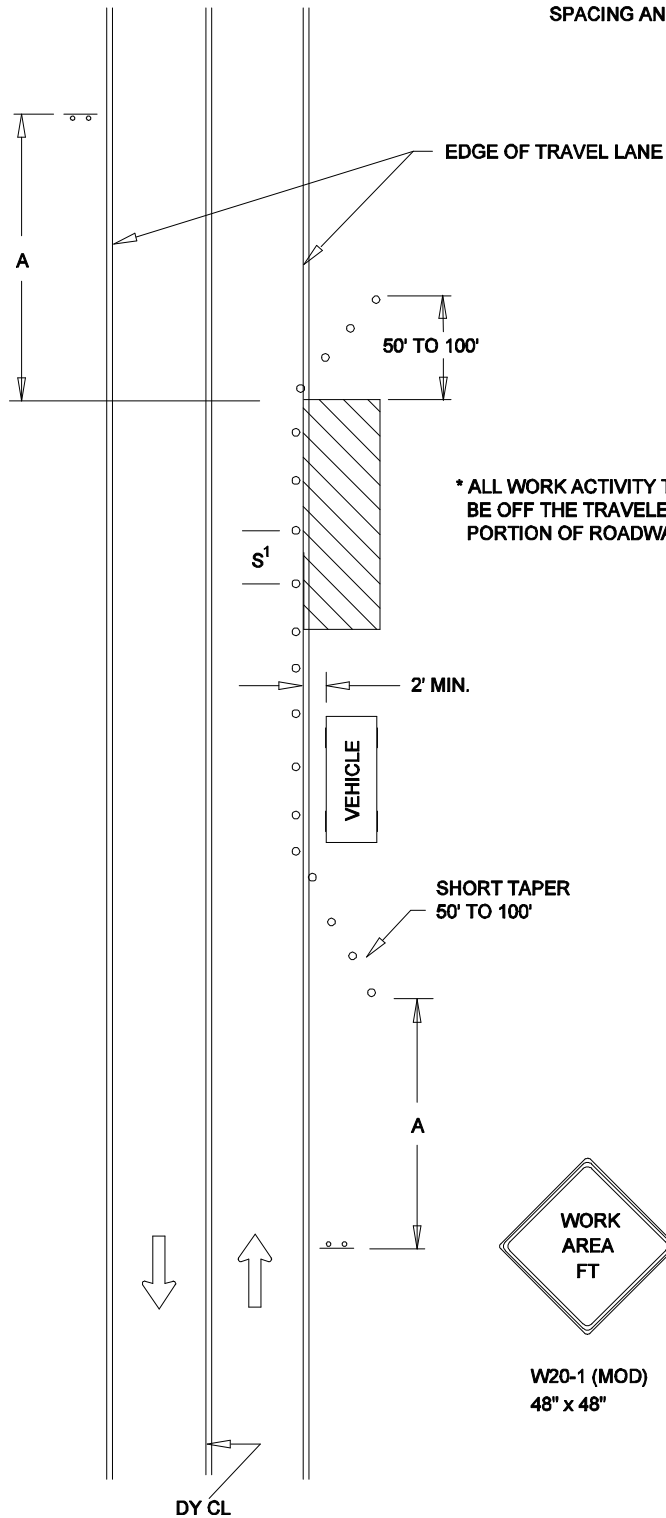
REVISION BY	DATE	APPROVED

DATE	TRAFFIC OPERATIONS SECTION MONTGOMERY COUNTY, MARYLAND	
07-01-12		
DES. BY	TRAFFIC CONTROL FOR SHOULDER WORK	
MCDPWT		
DRAWN BY	APPROVED	
TCLE		
SCALE	CHIEF, TRAFFIC OPERATIONS SECTION	
NTS		
STANDARD TCP-101.01		___ OF ___ SHEETS

REFER TO TCP 100.01 FOR SIGN  
SPACING AND TAPER LENGTHS



W20-1 (MOD)  
48" x 48"



DIRECTION OF TRAFFIC



SIGN



WORK SITE



TRAFFIC DRUMS  
OR CONES

$S^1 = 30$  FT.

$S^2 = 10$  FT.

REVISION BY	DATE	APPROVED

DATE	TRAFFIC OPERATIONS SECTION MONTGOMERY COUNTY, MARYLAND
07-01-12	
DES. BY	TRAFFIC CONTROL FOR WORK ACTIVITY OFF THE ROAD
MCDPWT	
DRAWN BY	APPROVED _____ CHIEF, TRAFFIC OPERATIONS SECTION STANDARD TCP-101.02 _____ OF _____ SHEETS
TCLE	
SCALE	
NTS	

W20-1  
48" x 48"



A

REFER TO TCP 100.01 FOR SIGN  
SPACING AND TAPER LENGTHS

100'

10'  
MIN.

S<sup>2</sup>

WORK AREA

S<sup>1</sup>

1/2 TAPER

A



W5-1  
48" x 48"

B



W20-1  
48" x 48"



DY CL



DIRECTION OF TRAFFIC



SIGN



WORK SITE



TRAFFIC DRUMS  
OR CONES

S<sup>1</sup>=30 FT.

S<sup>2</sup>=10 FT.

REVISION BY	DATE	APPROVED

DATE	TRAFFIC OPERATIONS SECTION MONTGOMERY COUNTY, MARYLAND	
07-01-12		
DES. BY	TRAFFIC CONTROL FOR PARTIAL LANE CLOSURE	
MCDPWT		
DRAWN BY	APPROVED	
TCLE		
SCALE	CHIEF, TRAFFIC OPERATIONS SECTION	
NTS		
STANDARD TCP-102.01		___ OF ___ SHEETS

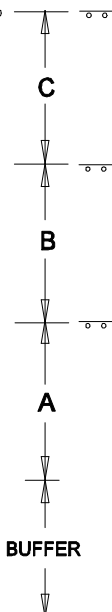
W20-1  
48" x 48"



W20-4  
48" x 48"



W20-7a(1)  
48" x 48"



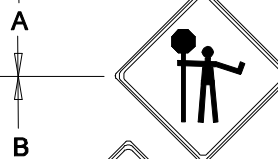
NOTE: ACCESS POINTS WITHIN LANE CLOSURE  
SHALL BE CONTROLLED BY FLAGGER(S)

REFER TO TCP 100.01 FOR SIGN  
SPACING, TAPER LENGTHS AND  
BUFFER ZONE LENGTHS

WORK AREA

BUFFER

50'-100'



W20-7a(1)  
48" x 48"



W20-4  
48" x 48"



W20-1  
48" x 48"



DIRECTION OF TRAFFIC



SIGN



WORK SITE



FLAGGER



TRAFFIC DRUMS  
OR CONES

S<sup>1</sup>=30 FT.

S<sup>2</sup>=10 FT.

DY CL

REVISION BY	DATE	APPROVED

DATE	TRAFFIC OPERATIONS SECTION MONTGOMERY COUNTY, MARYLAND	
07-01-12		
DES. BY	FLAGGING CONTROL NON - INTERSECTION	
MCDPWT		
DRAWN BY	APPROVED	
TCLE		
SCALE	CHIEF, TRAFFIC OPERATIONS SECTION	
NTS		
STANDARD TCP-102.02		___ OF ___ SHEETS

W20-1  
48" x 48"



W5-1  
48" x 48"



B

A

1/2 TAPER

TANGENT

TAPER

RESTRICT  
PARKING

10'  
MIN.

10'  
MIN.

S<sup>1</sup>

S<sup>1</sup>

S<sup>2</sup>

WORK AREA

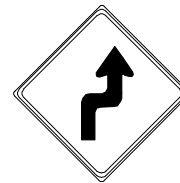
100'

1/2 TAPER

A

B

REFER TO TCP 100.01 FOR SIGN  
SPACING AND TAPER LENGTHS

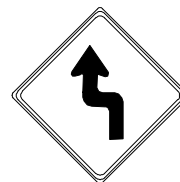


W1-3R  
48" x 48"



W1-6  
48" x 24"  
ARROW

RESTRICT  
PARKING



W1-3L  
48" x 48"



W20-1  
48" x 48"



DY CL



DIRECTION OF TRAFFIC



SIGN



WORK SITE



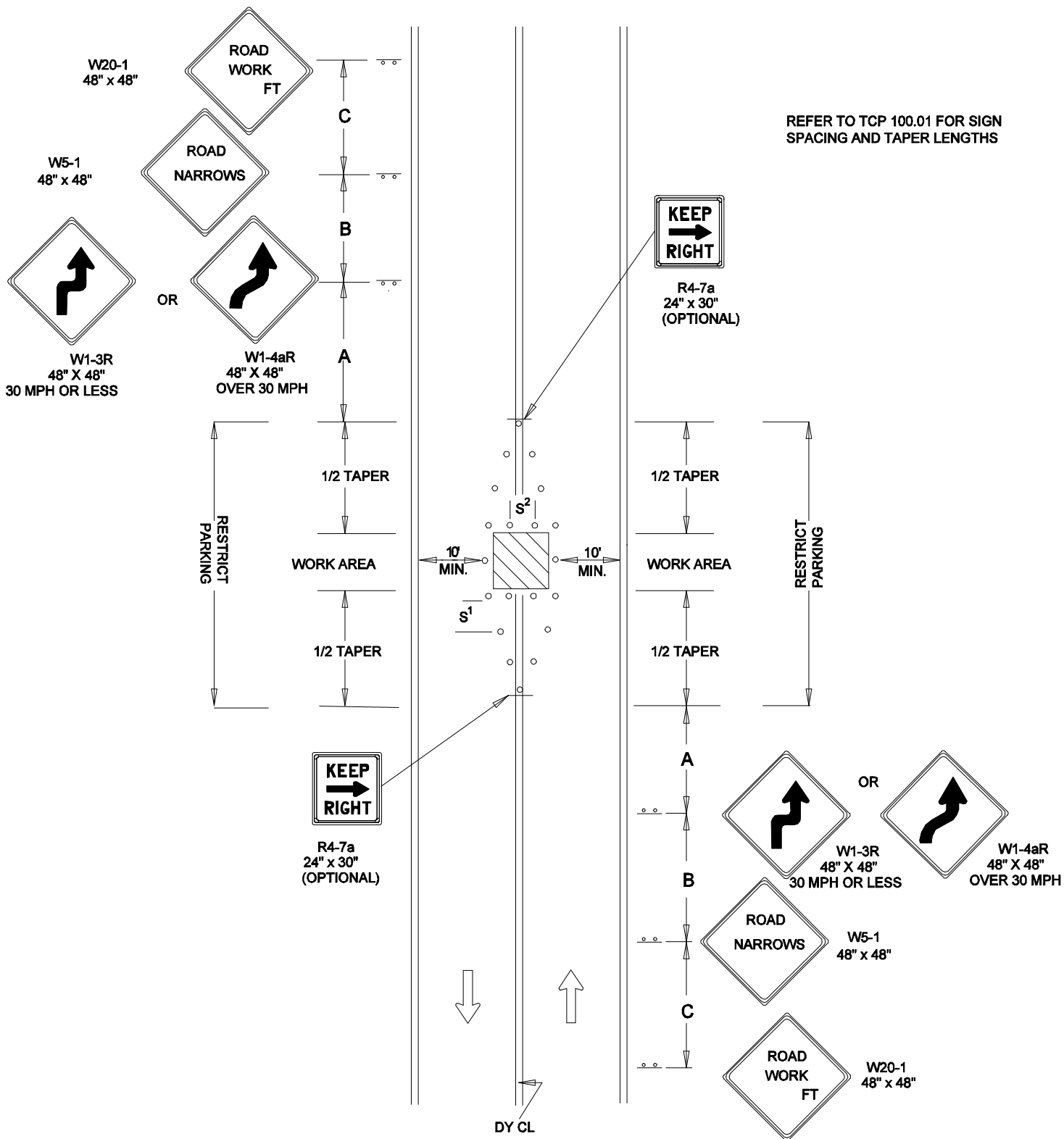
TRAFFIC DRUMS  
OR CONES

S<sup>1</sup>=30 FT.

S<sup>2</sup>=10 FT.

REVISION BY	DATE	APPROVED

DATE	TRAFFIC OPERATIONS SECTION MONTGOMERY COUNTY, MARYLAND
07-01-12	
DES. BY	TRAFFIC CONTROL FOR MAINTAINING TWO-WAY TRAFFIC BY ENCROACHING INTO OPPOSING TRAFFIC FLOW
MCDPWT	
DRAWN BY	APPROVED
TCLE	
SCALE	_____ CHIEF, TRAFFIC OPERATIONS SECTION
NTS	STANDARD TCP-102.03                      ____ OF ____ SHEETS



REVISION BY	DATE	APPROVED

DATE	07-01-12
DES. BY	MCDPWT
DRAWN BY	TCLE
SCALE	NTS
<b>TRAFFIC OPERATIONS SECTION</b> <b>MONTGOMERY COUNTY, MARYLAND</b>	
<b>TRAFFIC CONTROL FOR MAINTAINING TWO-WAY TRAFFIC WHILE WORKING IN CENTER OF ROADWAY</b>	
<b>APPROVED</b> <b>CHIEF, TRAFFIC OPERATIONS SECTION</b>	
<b>STANDARD TCP-102.04</b>	



W20-1  
48" x 48"



**NOTE:**  
WORK VEHICLES SHALL DISPLAY  
ROTATING AND /OR FLASHING LIGHT  
ATOP VEHICLES AND FLASHING  
WARNING LIGHTS IN FRONT AND REAR.

VEHICLES SHALL NOT PROCEED  
MORE THAN THREE (3) MILES AHEAD  
OF THE ADVANCE WARNING  
SIGNS.

VEHICLES SHOULD NOT OCCUPY OR BE  
STOPPED IN A LANE BEYOND A HORIZONTAL  
CURVE OR A VERTICAL CURVE (HILL).

IF STOPPING IS NECESSARY, FLAGGERS SHALL  
BE POSITIONED PRIOR TO STOPPING WORK  
VEHICLES.

THE FLAGGER SHALL BE POSITIONED IN  
ADVANCE OF THE CURVE (HORIZONTAL OR VERTICAL)  
TO PROVIDE MOTORIST ADEQUATE ADVANCE  
WARNING OF TEMPORARY WORK ZONE.

NO WORK OPERATION WHICH INTERFERES  
WITH THE FLOW OF TRAFFIC MAY TAKE PLACE  
DURING PEAK HOURS MONDAY - FRIDAY  
6 A.M. - 9 A.M. AND 3:30 P.M. - 7 P.M.



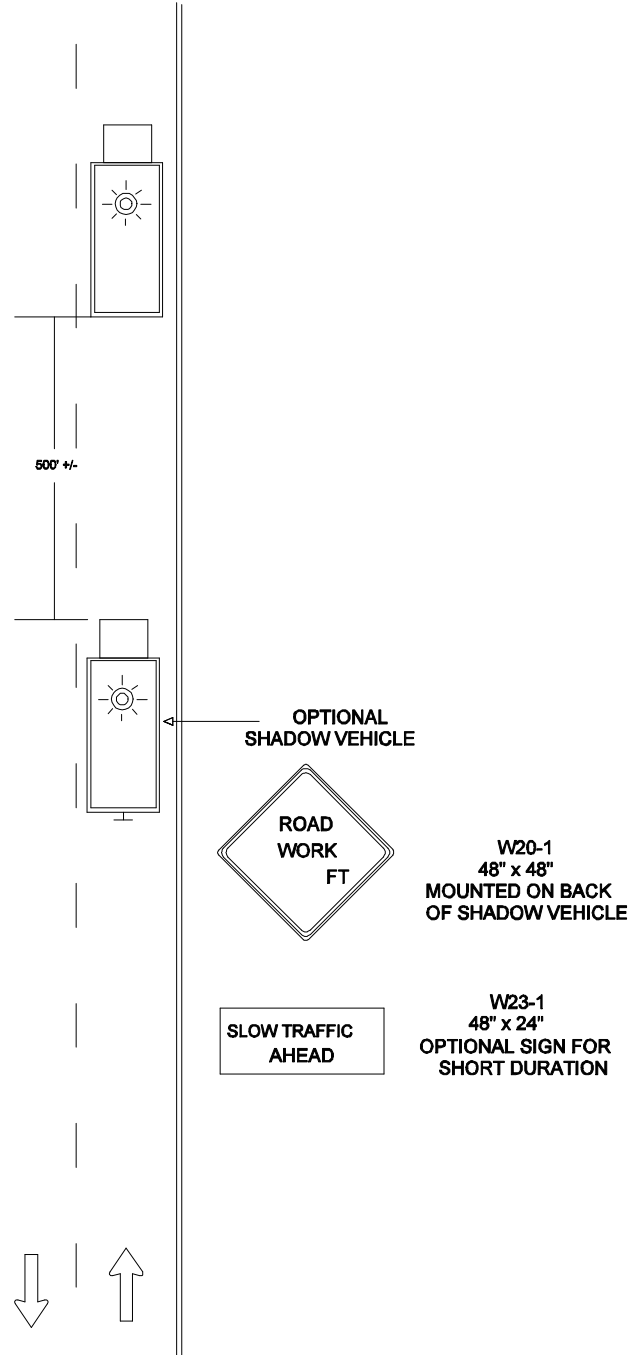
DIRECTION OF TRAFFIC



SIGN



FLASHING OR ROTATING LIGHT



REVISION BY	DATE	APPROVED

DATE 07-01-12	TRAFFIC OPERATIONS SECTION MONTGOMERY COUNTY, MARYLAND
DES. BY MCDPWT	
DRAWN BY TCLE	TRAFFIC CONTROL FOR MOBILE OPERATION ( <15 MIN )
SCALE NTS	APPROVED _____ CHIEF, TRAFFIC OPERATIONS SECTION
	STANDARD TCP-102.05 _____ OF _____ SHEETS

**NOTE:**  
 WORK VEHICLES SHALL DISPLAY  
 ROTATING AND /OR FLASHING LIGHT  
 ATOP VEHICLES AND FLASHING  
 WARNING LIGHTS IN FRONT AND REAR.

VEHICLES SHALL NOT PROCEED  
 MORE THAN THREE (3) MILES AHEAD  
 OF THE ADVANCE WARNING  
 SIGNS.

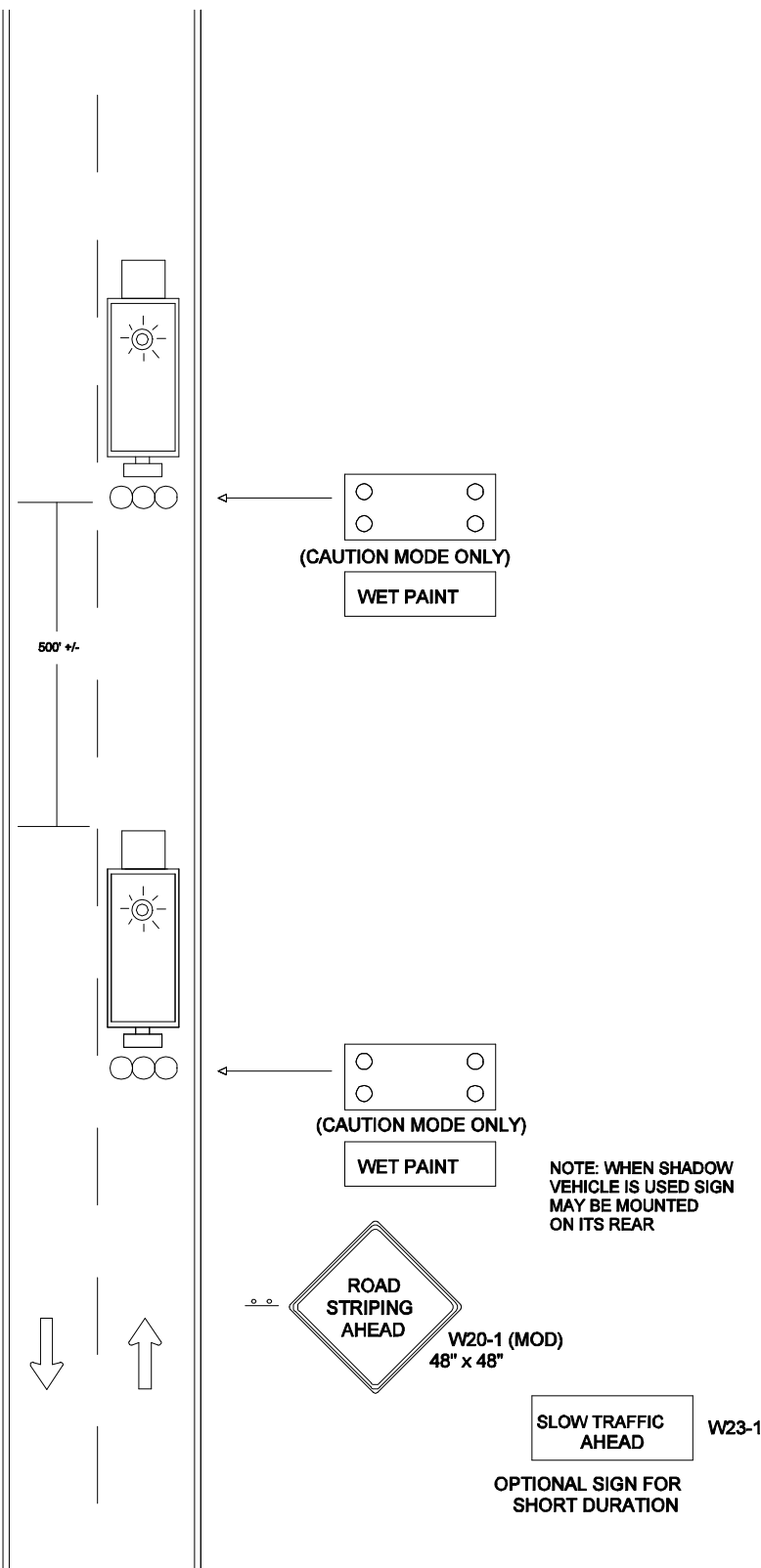
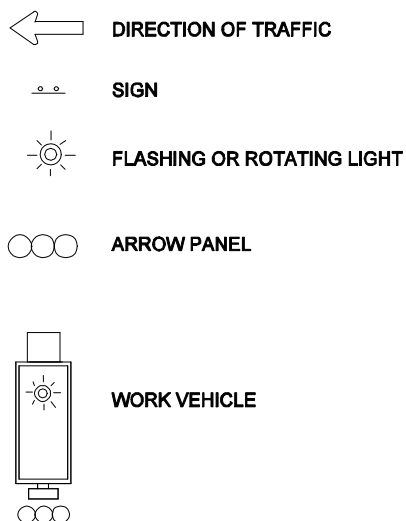
VEHICLES SHOULD NOT OCCUPY OR BE  
 STOPPED IN A LANE BEYOND A HORIZONTAL  
 CURVE OR A VERTICAL CURVE (HILL).

IF STOPPING IS NECESSARY, FLAGGERS SHALL  
 BE POSITIONED PRIOR TO STOPPING WORK  
 VEHICLES.

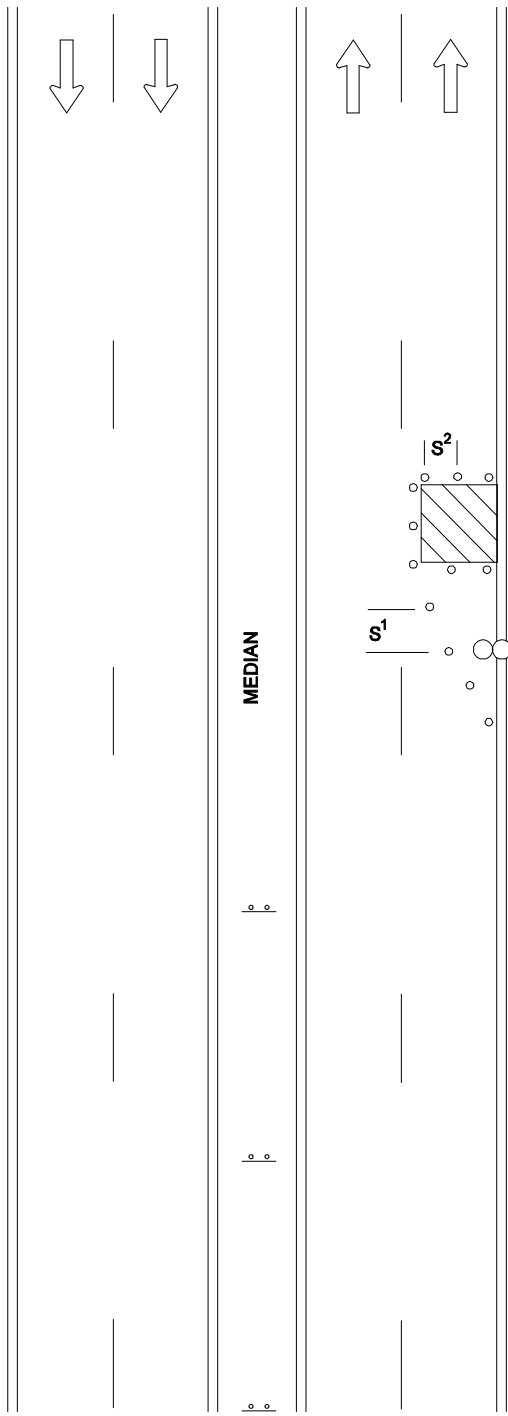
THE FLAGGER SHALL BE POSTIONED IN  
 ADVANCE OF THE CURVE (HORIZONTAL OR VERTICAL)  
 TO PROVIDE MOTORIST ADEQUATE ADVANCE  
 WARNING OF TEMPORARY WORK ZONE.

NO WORK OPERATION WHICH INTERFERES  
 WITH THE FLOW OF TRAFFIC MAY TAKE PLACE  
 DURING PEAK HOURS MONDAY - FRIDAY  
 6 A.M. - 9 A.M. AND 3:30 P.M. - 7 P.M.

FOR PAVEMENT MARKING MATERIALS HAVING  
 SLOW DRYING TIMES ADDITIONAL BACK-UP  
 VEHICLES TO FOLLOW TRUCK MAY  
 BE NECESSARY.

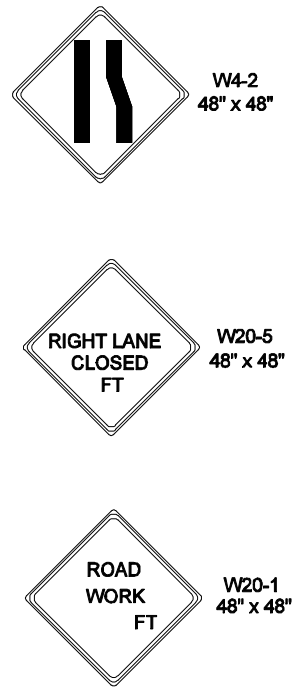


			DATE 07-01-12	TRAFFIC OPERATIONS SECTION MONTGOMERY COUNTY, MARYLAND	
			DES. BY MCDPWT	TRAFFIC CONTROL FOR MOVING MARKING OPERATION (1)	
REVISION BY	DATE	APPROVED	DRAWN BY TCLE	APPROVED	
			SCALE	CHIEF, TRAFFIC OPERATIONS SECTION	
			NTS	STANDARD TCP-102.06	
				OF SHEETS	



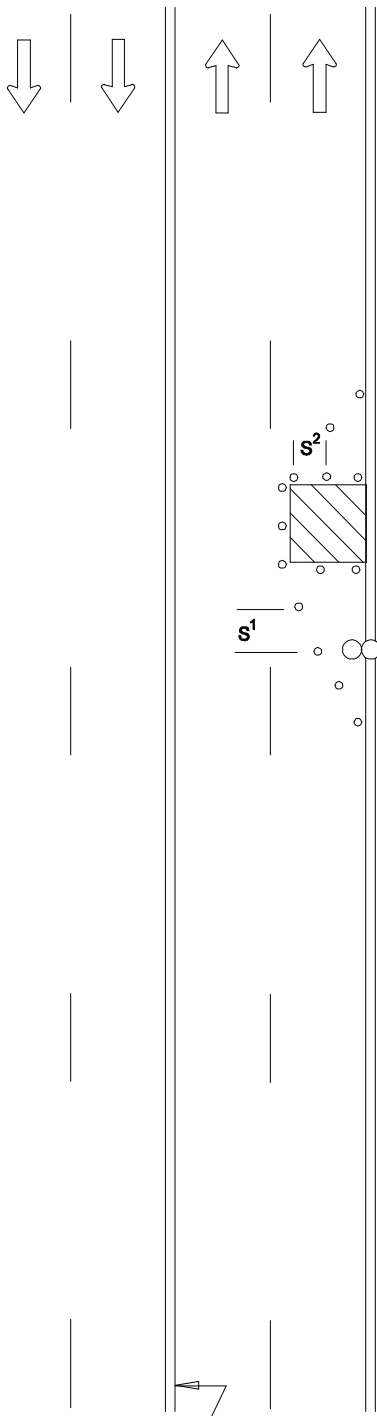
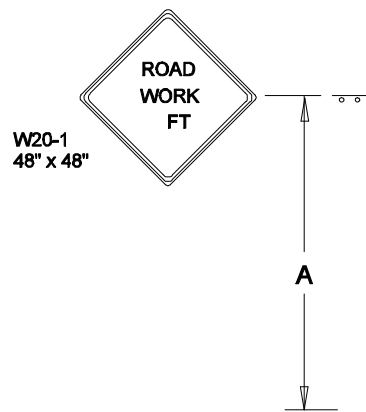
**NOTE: ACCESS POINTS WITHIN LANE CLOSURE SHALL BE CONTROLLED BY FLAGGER(S)**

**REFER TO TCP 100.01 FOR SIGN SPACING AND TAPER LENGTHS**



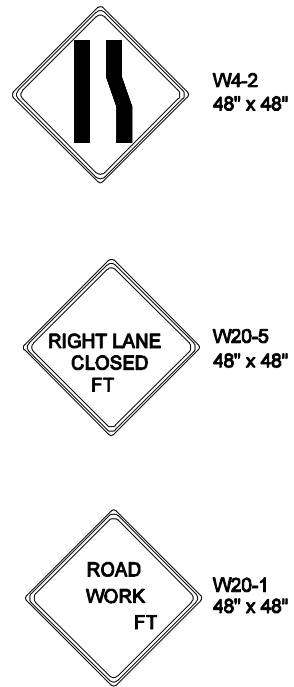
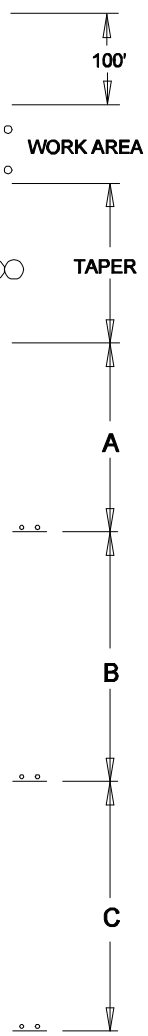
-  **DIRECTION OF TRAFFIC**
-  **SIGN**
-  **WORK SITE**
-  **ARROW PANEL**
-  **TRAFFIC DRUMS OR CONES**
- $S^1 = 30 \text{ FT.}$
- $S^2 = 10 \text{ FT.}$

			DATE 07-01-12	TRAFFIC OPERATIONS SECTION MONTGOMERY COUNTY, MARYLAND	
			DES. BY MCDPWT	TRAFFIC CONTROL FOR RIGHT LANE CLOSURE (DIVIDED)	
			DRAWN BY TCLE	APPROVED	
			SCALE NTS	CHIEF, TRAFFIC OPERATIONS SECTION	
				STANDARD TCP-103.01 _____ OF _____ SHEETS	
REVISION BY	DATE	APPROVED			



NOTE: ACCESS POINTS WITHIN LANE CLOSURE SHALL BE CONTROLLED BY FLAGGER(S)

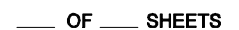
REFER TO TCP 100.01 FOR SIGN SPACING AND TAPER LENGTHS



- DIRECTION OF TRAFFIC
- SIGN
- WORK SITE
- ARROW PANEL
- TRAFFIC DRUMS OR CONES
- $S^1 = 30 \text{ FT.}$
- $S^2 = 10 \text{ FT.}$

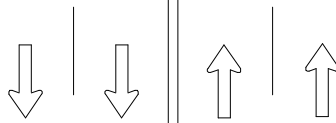
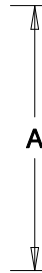
REVISION BY	DATE	APPROVED

DATE 07-01-12	TRAFFIC OPERATIONS SECTION MONTGOMERY COUNTY, MARYLAND
DES. BY MCDPWT	
DRAWN BY TCLE	TRAFFIC CONTROL FOR RIGHT LANE CLOSURE (UNDIVIDED)
SCALE NTS	APPROVED _____ CHIEF, TRAFFIC OPERATIONS SECTION
STANDARD TCP-103.02 _____ OF _____ SHEETS	



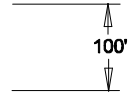
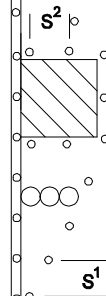
REVISION BY	DATE	APPROVED

W20-1 (MOD)  
48" x 48"



**NOTE: ACCESS POINTS WITHIN LANE CLOSURE  
SHALL BE CONTROLLED BY FLAGGER(S)**

**REFER TO TCP 100.01 FOR SIGN  
SPACING AND TAPER LENGTHS**



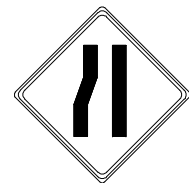
**WORK AREA**

**TAPER**

**A**

**B**

**C**



W4-2  
48" x 48"



W20-5  
48" x 48"



W20-1  
48" x 48"

DY CL



**DIRECTION OF TRAFFIC**



**SIGN**



**WORK SITE**



**ARROW PANEL**



**TRAFFIC DRUMS  
OR CONES**

**S<sup>1</sup> = 30 FT.**

**S<sup>2</sup> = 10 FT.**

REVISION BY	DATE	APPROVED

DATE 07-01-12	TRAFFIC OPERATIONS SECTION MONTGOMERY COUNTY, MARYLAND
DES. BY MCDPWT	
DRAWN BY TCLE	TRAFFIC CONTROL FOR LEFT LANE CLOSURE (UNDIVIDED)
SCALE NTS	APPROVED _____ CHIEF, TRAFFIC OPERATIONS SECTION
STANDARD TCP-103.04 _____ OF _____ SHEETS	

W20-1 (MOD)  
48" x 48"



A



NOTE: ACCESS POINTS WITHIN LANE CLOSURE  
SHALL BE CONTROLLED BY FLAGGER(S)



W20-1 (MOD)  
48" x 48"

100'

WORK AREA



A



W20-1 (MOD)  
48" x 48"

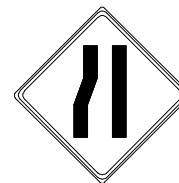
REFER TO TCP 100.01 FOR SIGN  
SPACING AND TAPER LENGTHS

S<sup>1</sup>

50'+/- LEFT TURN  
STORAGE MINIMUM

TAPER

A



W4-2  
48" x 48"

B



W20-5  
48" x 48"

C



W20-1  
48" x 48"



DIRECTION OF TRAFFIC



SIGN



WORK SITE



ARROW PANEL



TRAFFIC DRUMS  
OR CONES

S<sup>1</sup>=30 FT.

S<sup>2</sup>=10 FT.

DY CL

REVISION BY	DATE	APPROVED

DATE 07-01-12	TRAFFIC OPERATIONS SECTION MONTGOMERY COUNTY, MARYLAND
DES. BY MCDPWT	
DRAWN BY TCLE	TRAFFIC CONTROL FOR LEFT LANE CLOSURE (INTERSECTION FAR SIDE)
SCALE NTS	APPROVED
	CHIEF, TRAFFIC OPERATIONS SECTION
	STANDARD TCP-103.05 OF SHEETS

**NOTE:**  
 WORK VEHICLES SHALL DISPLAY  
 ROTATING AND /OR FLASHING LIGHT  
 ATOP VEHICLES AND FLASHING  
 WARNING LIGHTS IN FRONT AND REAR.

**VEHICLES SHALL NOT PROCEED  
 MORE THAN THREE (3) MILES AHEAD  
 OF THE ADVANCE WARNING  
 SIGNS.**

**VEHICLES SHOULD NOT OCCUPY OR BE  
 STOPPED IN A LANE BEYOND A HORIZONTAL  
 CURVE OR A VERTICAL CURVE (HILL).**

**IF STOPPING IS NECESSARY, FLAGGERS SHALL  
 BE POSITIONED PRIOR TO STOPPING WORK  
 VEHICLES.**

**THE FLAGGER SHALL BE POSITIONED IN  
 ADVANCE OF THE CURVE (HORIZONTAL OR  
 VERTICAL) TO PROVIDE MOTORIST ADEQUATE  
 ADVANCE WARNING OF TEMPORARY WORK ZONE.**

**NO WORK OPERATIONS WHICH INTERFERES  
 WITH THE FLOW OF TRAFFIC MAY TAKE PLACE  
 DURING PEAK HOURS MONDAY - FRIDAY  
 6 A.M. - 9 A.M. AND 3:30 P.M. - 7 P.M.**

**FOR PAVEMENT MARKING MATERIALS HAVING  
 SLOW DRYING TIMES ADDITIONAL BACK-UP  
 VEHICLES TO FOLLOW TRUCK MAY  
 BE NECESSARY.**



**DIRECTION OF TRAFFIC**



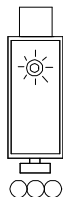
**SIGN**



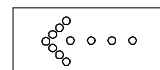
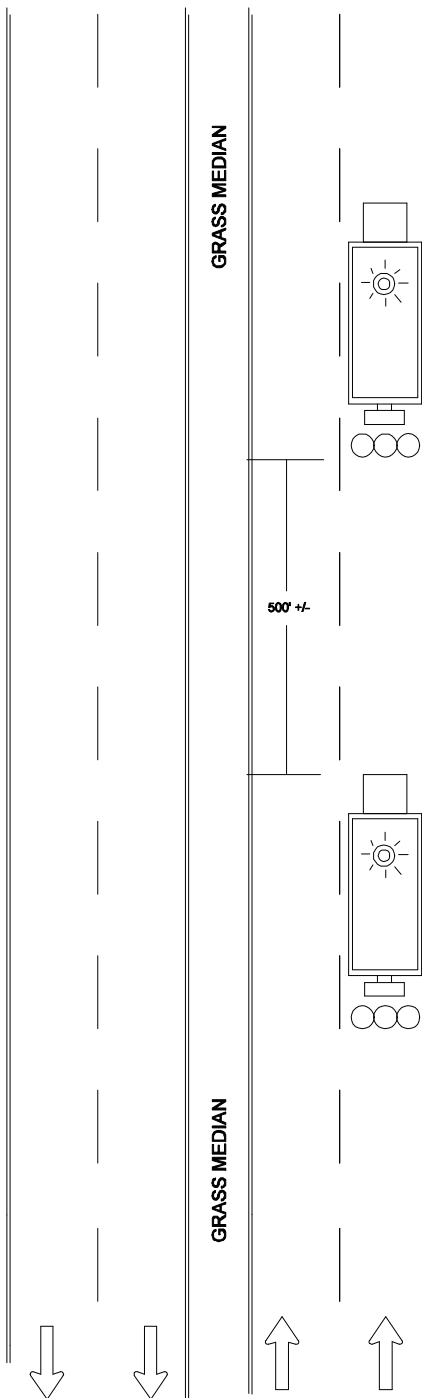
**FLASHING OR ROTATING LIGHT**



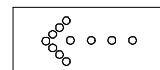
**ARROW PANEL**



**WORK VEHICLE**



**WET PAINT**



**WET PAINT**

**NOTE: WHEN SHADOW  
 VEHICLE IS USED SIGN  
 MAY BE MOUNTED  
 ON ITS REAR**



**W20-1 (MOD)  
 48" x 48"**

**SLOW TRAFFIC  
 AHEAD**

**W23-1**

**OPTIONAL SIGN FOR  
 SHORT DURATION**

REVISION BY	DATE	APPROVED

DATE 07-01-12	TRAFFIC OPERATIONS SECTION MONTGOMERY COUNTY, MARYLAND
DES. BY MCDPWT	
DRAWN BY TCLE	TRAFFIC CONTROL FOR MOVING MARKING OPERATION (2)
SCALE NTS	APPROVED _____ CHIEF, TRAFFIC OPERATIONS SECTION
	STANDARD TCP-103.06 _____ OF _____ SHEETS



W20-1  
48" x 48"



W9-3  
48" x 48"



B

A

100'

BUFFER

WORK AREA

NOTE: ACCESS POINTS WITHIN LANE CLOSURE  
SHALL BE CONTROLLED BY FLAGGER(S)

REFER TO TCP 100.01 FOR SIGN  
SPACING AND TAPER LENGTHS

NOTE: ARROW DISPLAY PANEL  
TO BE SET ON CAUTION MODE.

WORK AREA

BUFFER

100'

A

B



W9-3  
48" x 48"



W20-1  
48" x 48"



DIRECTION OF TRAFFIC



SIGN



WORK SITE



ARROW PANEL



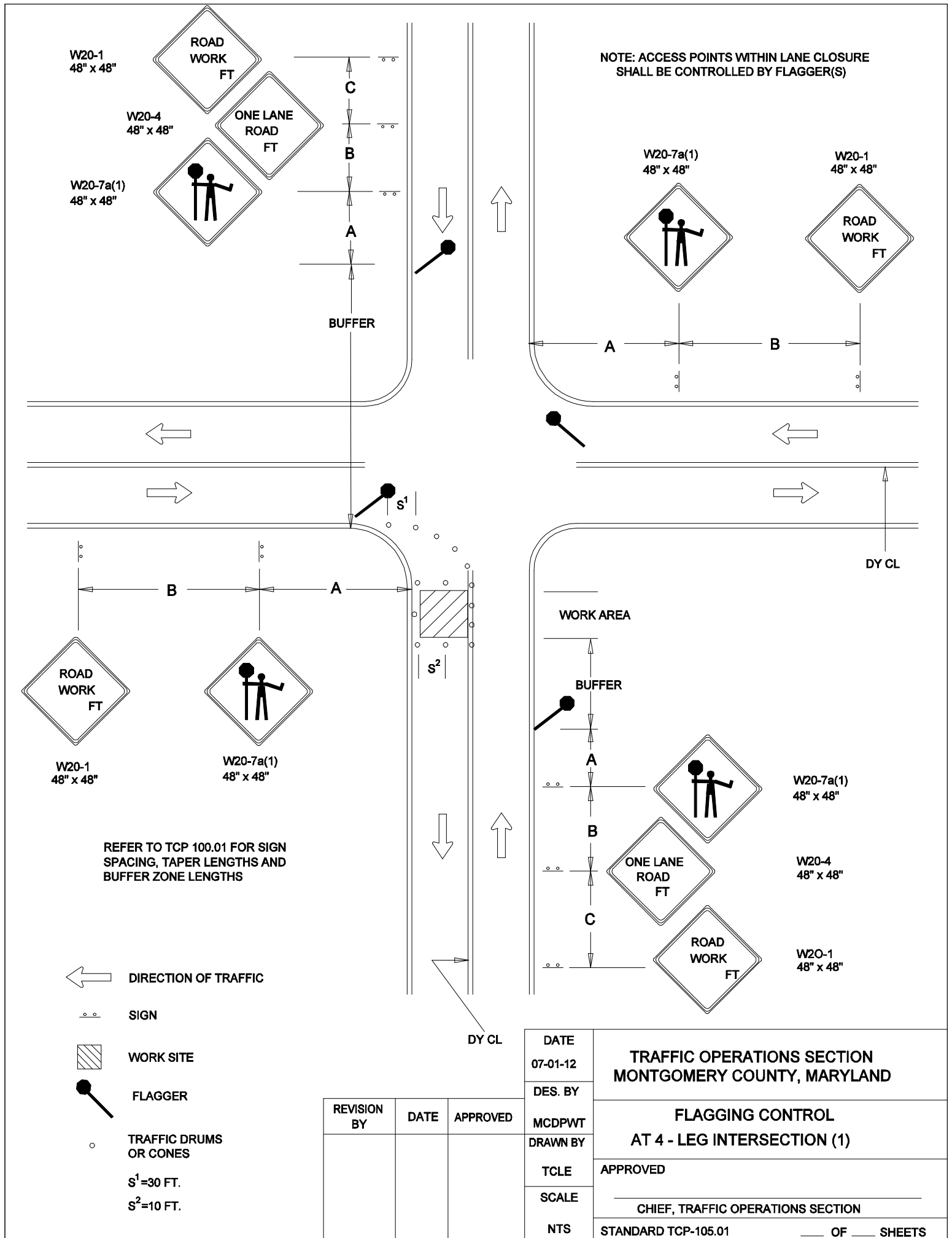
TRAFFIC DRUMS  
OR CONES

S<sup>1</sup>=30 FT.

S<sup>2</sup>=10 FT.

REVISION BY	DATE	APPROVED

DATE 07-01-12	TRAFFIC OPERATIONS SECTION MONTGOMERY COUNTY, MARYLAND
DES. BY MCDPWT	
DRAWN BY TCLE	TRAFFIC CONTROL FOR TWO-WAY LEFT TURN LANE CLOSURE
SCALE NTS	APPROVED _____ CHIEF, TRAFFIC OPERATIONS SECTION
STANDARD TCP-104.01 _____ OF _____ SHEETS	



REFER TO TCP 100.01 FOR SIGN  
SPACING, TAPER LENGTHS AND  
BUFFER ZONE LENGTHS

← DIRECTION OF TRAFFIC

○ ○ SIGN

▨ WORK SITE

● FLAGGER

○ ○ TRAFFIC DRUMS  
OR CONES

S<sup>1</sup>=30 FT.

S<sup>2</sup>=10 FT.

DY CL

DATE  
07-01-12

DES. BY

MCDPWT

DRAWN BY

TCLE

SCALE

NTS

TRAFFIC OPERATIONS SECTION  
MONTGOMERY COUNTY, MARYLAND

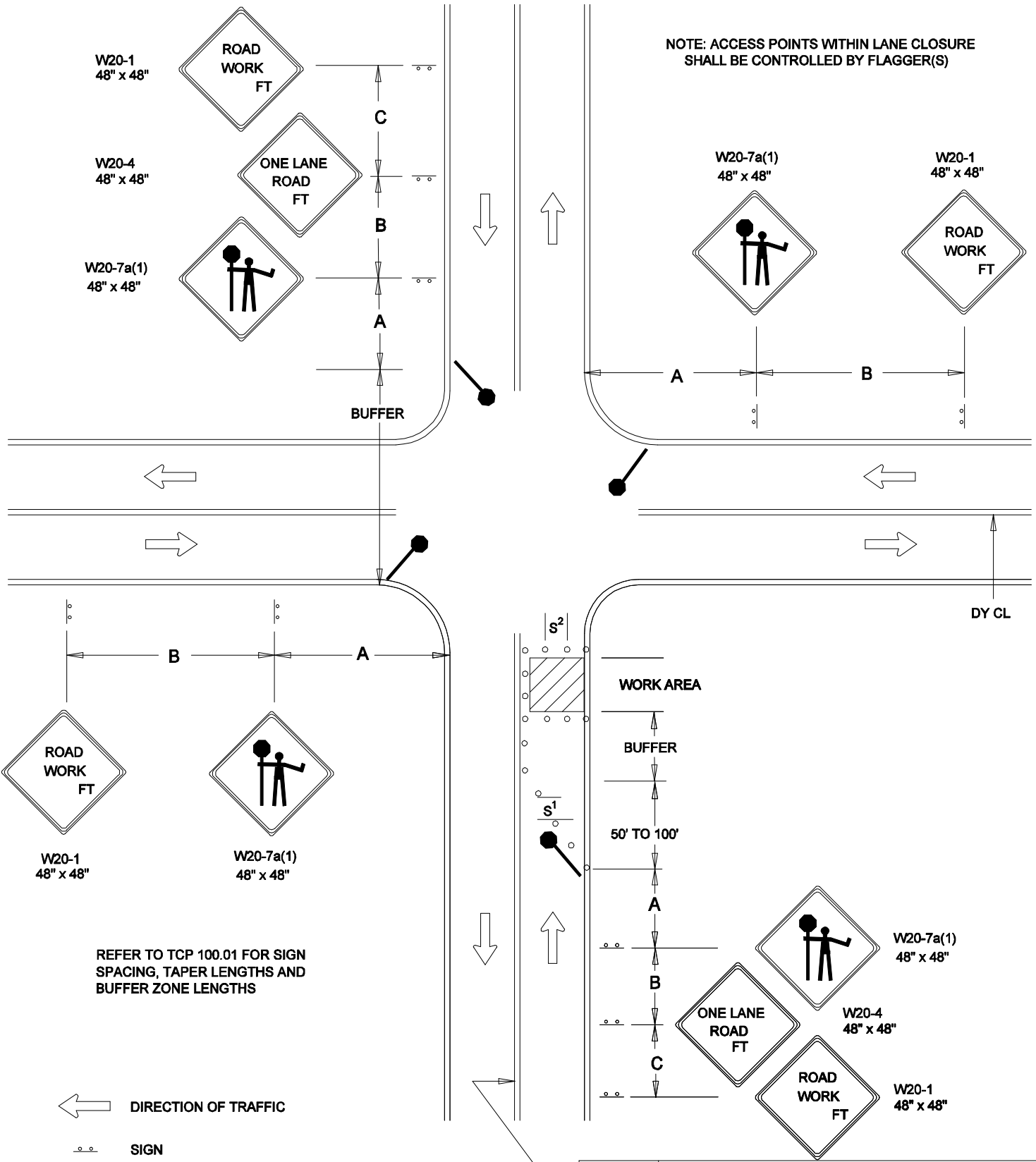
FLAGGING CONTROL  
AT 4 - LEG INTERSECTION (1)

APPROVED

\_\_\_\_\_  
CHIEF, TRAFFIC OPERATIONS SECTION

STANDARD TCP-105.01 \_\_\_\_\_ OF \_\_\_\_\_ SHEETS

REVISION BY	DATE	APPROVED



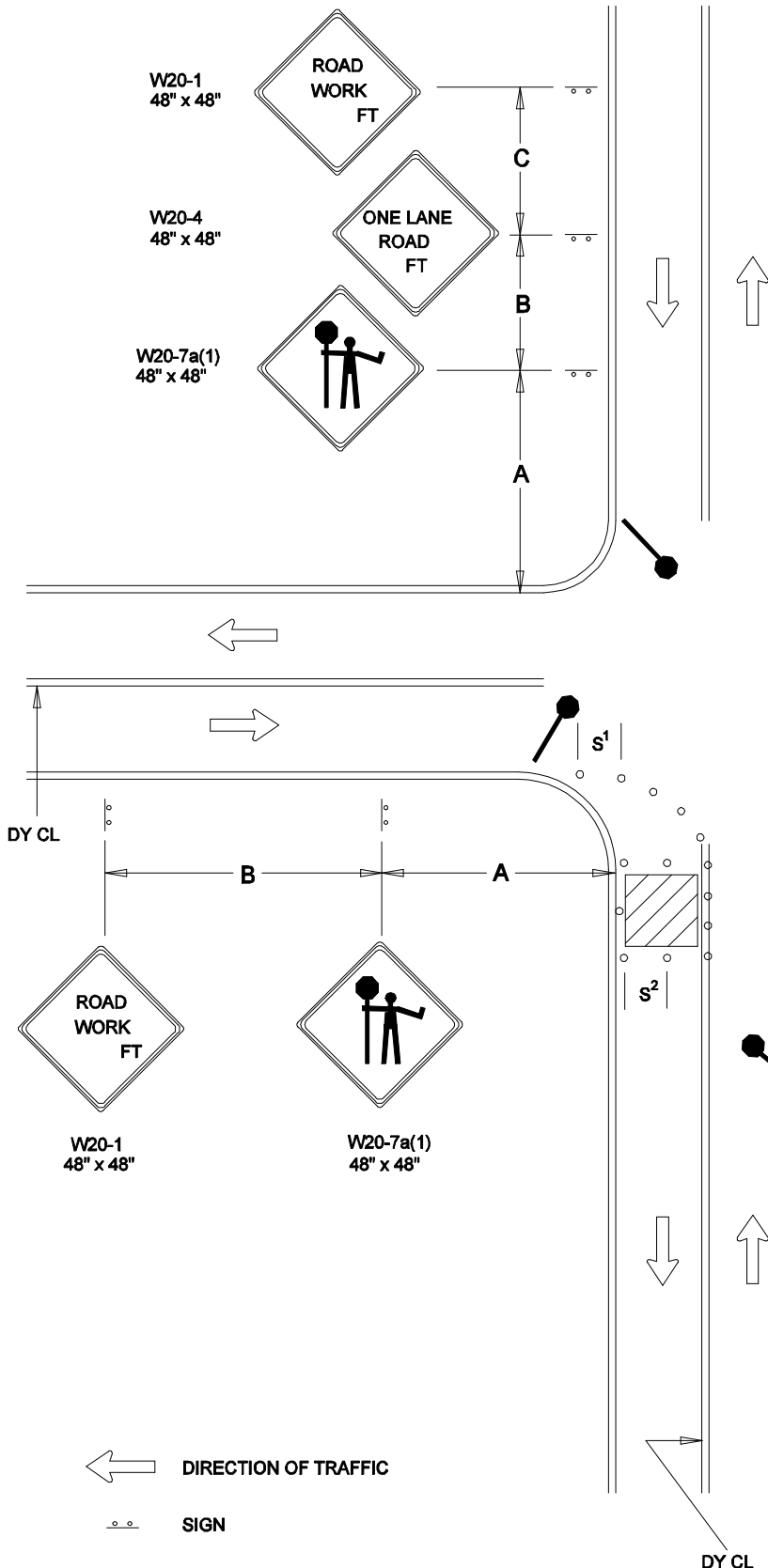
NOTE: ACCESS POINTS WITHIN LANE CLOSURE SHALL BE CONTROLLED BY FLAGGER(S)

REFER TO TCP 100.01 FOR SIGN SPACING, TAPER LENGTHS AND BUFFER ZONE LENGTHS

- DIRECTION OF TRAFFIC
- SIGN
- WORK SITE
- FLAGGER
- TRAFFIC DRUMS OR CONES
- $S^1 = 30 \text{ FT.}$
- $S^2 = 10 \text{ FT.}$

REVISION BY	DATE	APPROVED

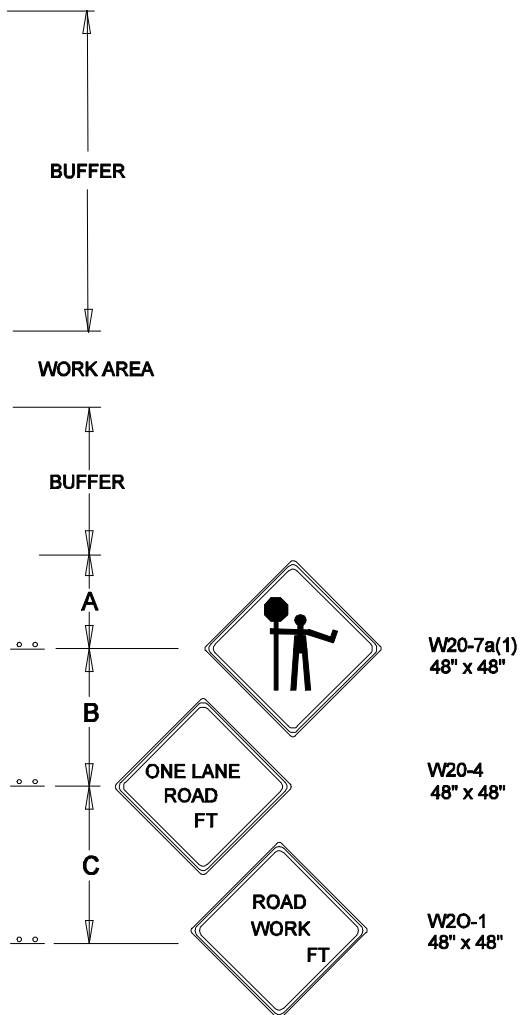
DATE	07-01-12	TRAFFIC OPERATIONS SECTION MONTGOMERY COUNTY, MARYLAND	
DES. BY	MCDPWT		
DRAWN BY	TCLE	FLAGGING CONTROL AT 4 - LEG INTERSECTION (2)	
SCALE	NTS	APPROVED _____	
		CHIEF, TRAFFIC OPERATIONS SECTION	
		STANDARD TCP-105.02 _____ OF _____ SHEETS	



NOTE: ACCESS POINTS WITHIN LANE CLOSURE SHALL BE CONTROLLED BY FLAGGER(S)

REFER TO TCP 100.01 FOR SIGN SPACING, TAPER LENGTHS AND BUFFER ZONE LENGTHS

- DIRECTION OF TRAFFIC
- SIGN
- WORK SITE
- FLAGGER
- TRAFFIC DRUMS OR CONES
- S<sup>1</sup>=30 FT.
- S<sup>2</sup>=10 FT.



DY CL			DATE	TRAFFIC OPERATIONS SECTION MONTGOMERY COUNTY, MARYLAND
			07-01-12	
REVISION BY	DATE	APPROVED	DES. BY	FLAGGING CONTROL AT 3 - LEG INTERSECTION (1)
			MCDPWT	
			DRAWN BY	
			TCLE	
			SCALE	
NTS	APPROVED			
	_____ CHIEF, TRAFFIC OPERATIONS SECTION			
			STANDARD TCP-105.03                      ____ OF ____ SHEETS	

W20-1  
48" x 48"



W20-4  
48" x 48"



W20-7a(1)  
48" x 48"



C

B

A

BUFFER

NOTE: ACCESS POINTS WITHIN LANE CLOSURE  
SHALL BE CONTROLLED BY FLAGGER(S)

REFER TO TCP 100.01 FOR SIGN  
SPACING, TAPER LENGTHS AND  
BUFFER ZONE LENGTHS

W20-7a(1)  
48" x 48"



W20-1  
48" x 48"



A

B

DY CL

WORK AREA

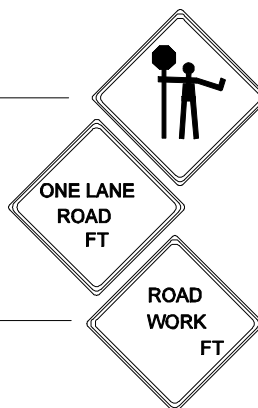
BUFFER

50' TO 100'

A

B

C



W20-7a(1)  
48" x 48"

W20-4  
48" x 48"

W20-1  
48" x 48"

DY CL



DIRECTION OF TRAFFIC



SIGN



WORK SITE



FLAGGER

TRAFFIC DRUMS  
OR CONES

S<sup>1</sup>=30 FT.

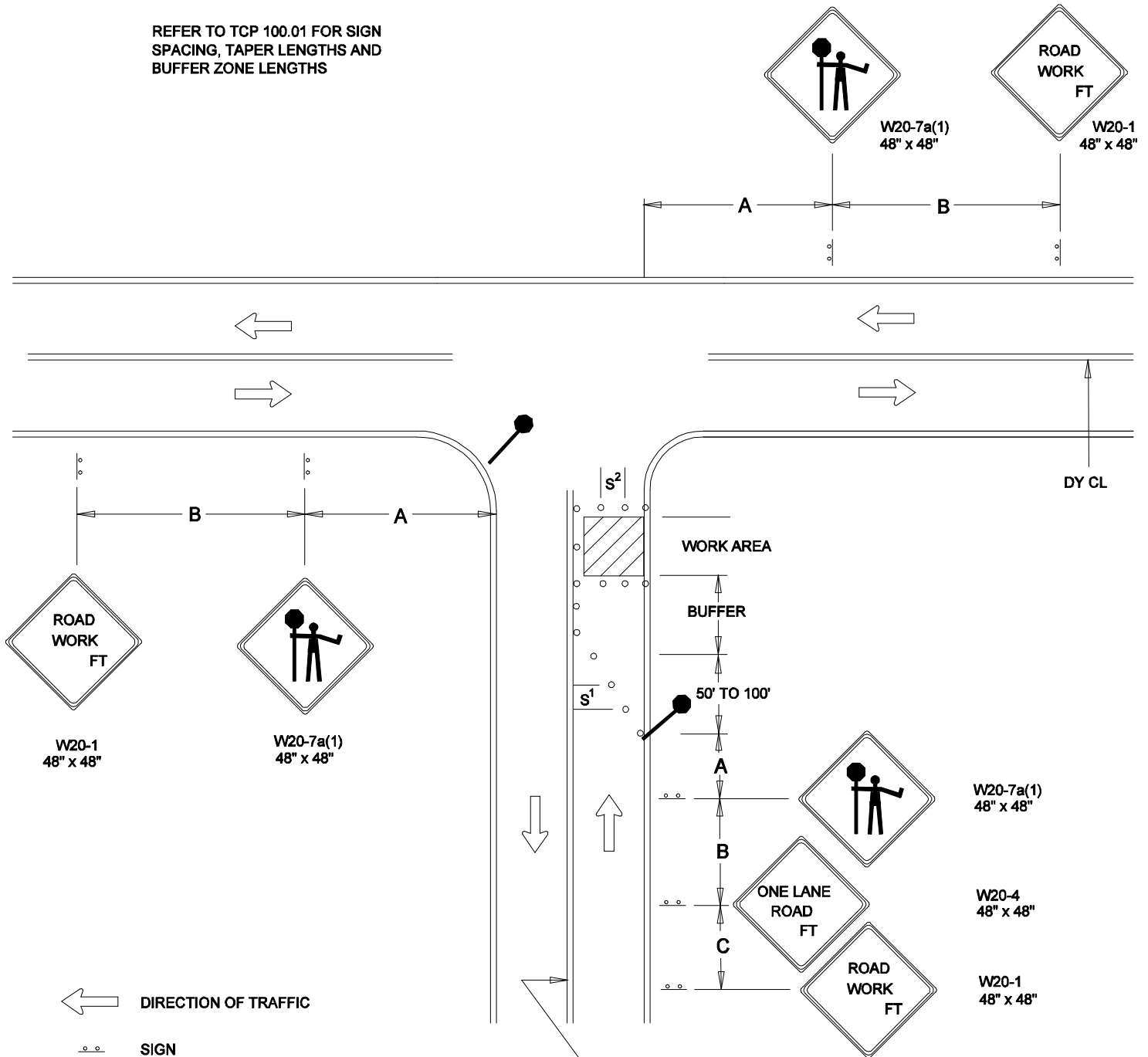
S<sup>2</sup>=10 FT.

REVISION BY	DATE	APPROVED

DATE 07-01-12	TRAFFIC OPERATIONS SECTION MONTGOMERY COUNTY, MARYLAND
DES. BY MCDPWT	
DRAWN BY TCLE	FLAGGING CONTROL AT 3 - LEG INTERSECTION (2)
SCALE NTS	APPROVED _____ CHIEF, TRAFFIC OPERATIONS SECTION
STANDARD TCP-105.04 _____ OF _____ SHEETS	

NOTE: ACCESS POINTS WITHIN LANE CLOSURE  
SHALL BE CONTROLLED BY FLAGGER(S)

REFER TO TCP 100.01 FOR SIGN  
SPACING, TAPER LENGTHS AND  
BUFFER ZONE LENGTHS



← DIRECTION OF TRAFFIC

○ SIGN

▨ WORK SITE

● FLAGGER

○ TRAFFIC DRUMS  
OR CONES

$S^1=30$  FT.

$S^2=10$  FT.

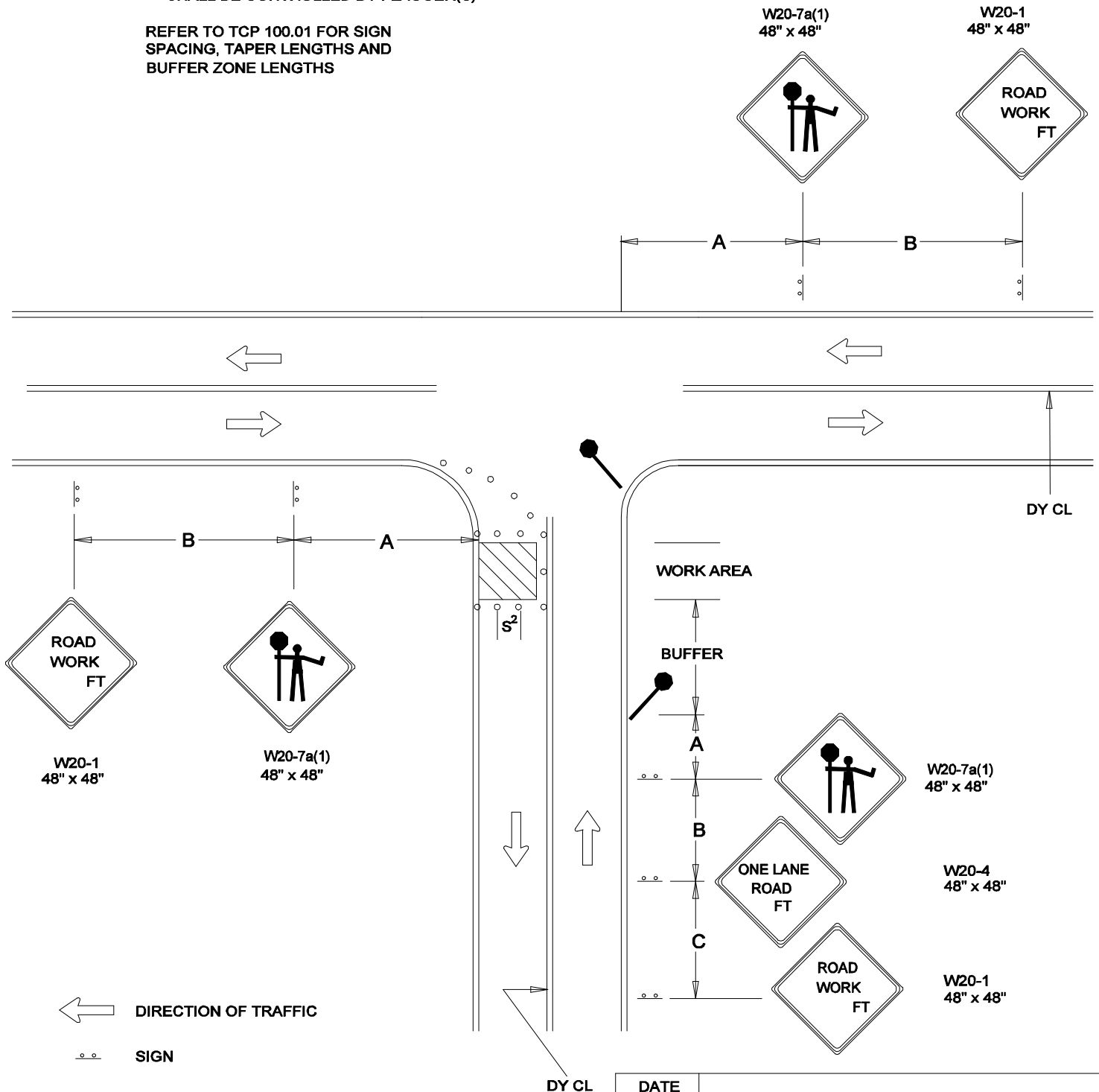
DY CL

DATE	07-01-12	TRAFFIC OPERATIONS SECTION MONTGOMERY COUNTY, MARYLAND	
DES. BY	MCDPWT		
DRAWN BY	TCLE	FLAGGING CONTROL AT 3 - LEG INTERSECTION (3)	
SCALE	NTS	APPROVED	
		CHIEF, TRAFFIC OPERATIONS SECTION	
		STANDARD TCP-105.05 _____ OF _____ SHEETS	

REVISION BY	DATE	APPROVED

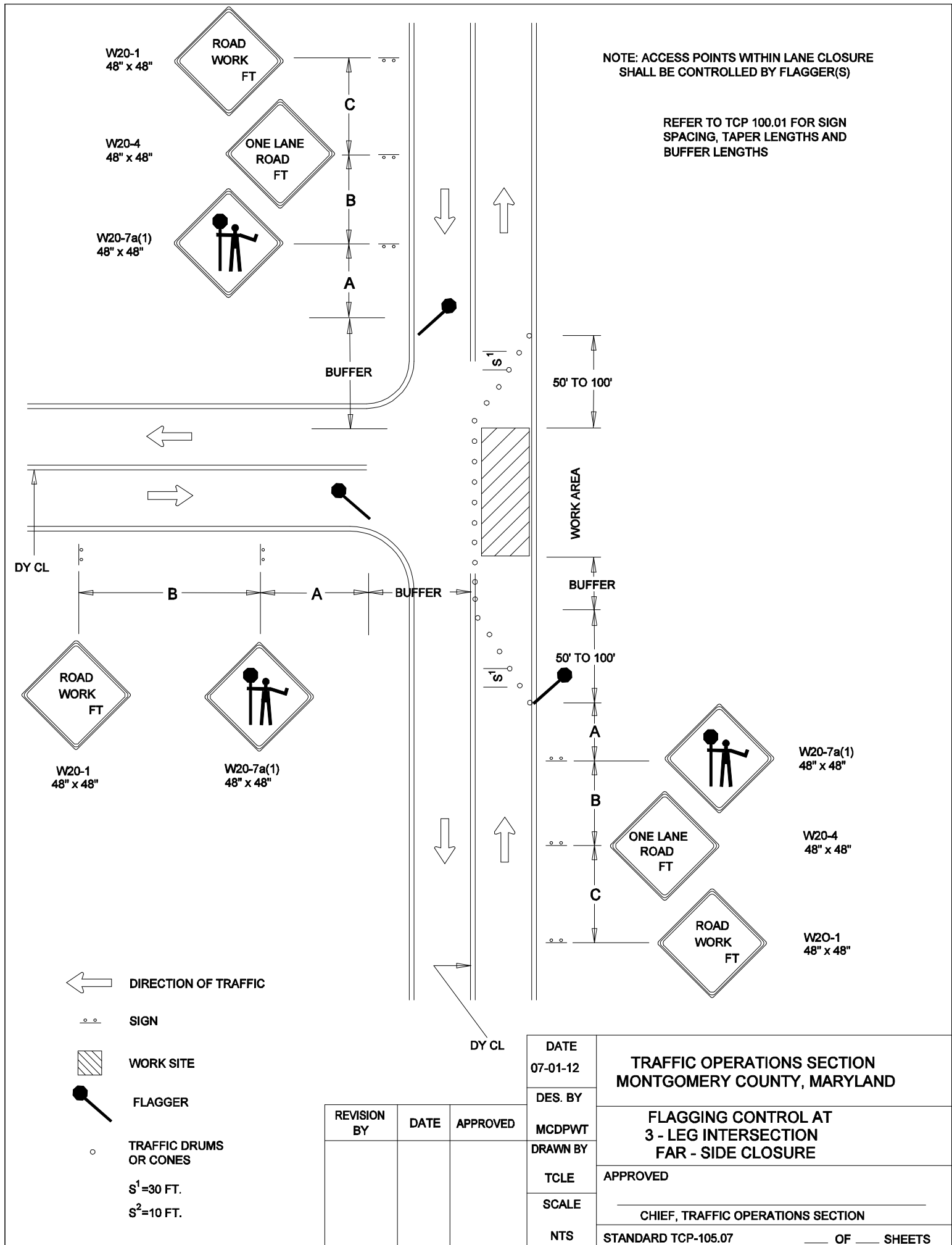
NOTE: ACCESS POINTS WITHIN LANE CLOSURE  
SHALL BE CONTROLLED BY FLAGGER(S)

REFER TO TCP 100.01 FOR SIGN  
SPACING, TAPER LENGTHS AND  
BUFFER ZONE LENGTHS

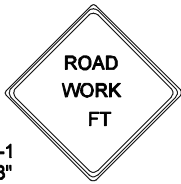


REVISION BY	DATE	APPROVED

DATE 07-01-12	TRAFFIC OPERATIONS SECTION MONTGOMERY COUNTY, MARYLAND
DES. BY MCDPWT	
DRAWN BY TCLE	FLAGGING CONTROL AT 3 - LEG INTERSECTION (4)
SCALE NTS	APPROVED _____ CHIEF, TRAFFIC OPERATIONS SECTION
	STANDARD TCP-105.06 _____ OF _____ SHEETS







W20-1  
48" X 48"

REFER TO TCP 100.01 FOR SIGN  
SPACING AND TAPER LENGTHS



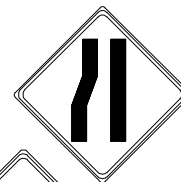
W20-1  
48" X 48"



W20-1  
48" X 48"

WORK AREA

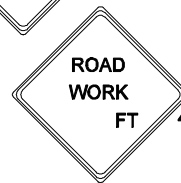
TAPER



W4-2  
48" X 48"



W20-5  
48" X 48"



W20-1  
48" X 48"

← DIRECTION OF TRAFFIC

○ ○ SIGN

▨ WORK SITE

○ ○ ○ ARROW PANEL

○ TRAFFIC DRUMS  
OR CONES

S<sup>1</sup> = 30 FT

S<sup>2</sup> = 10 FT

REVISION BY	DATE	APPROVED

DATE 07-01-12	TRAFFIC OPERATIONS SECTION MONTGOMERY COUNTY, MARYLAND
DES. BY MCDPWT	
DRAWN BY TCLE	TRAFFIC CONTROL FOR LEFT TURN LANE CLOSURE
SCALE NTS	APPROVED _____ CHIEF, TRAFFIC OPERATIONS SECTION
STANDARD TCP-106.01 _____ OF _____ SHEETS	

W20-1  
48" X 48"



REFER TO TCP 100.01 FOR SIGN  
SPACING AND TAPER LENGTHS

W20-1  
48" X 48"



W20-1  
48" X 48"

WORK AREA



W20-5 (MOD)  
48" X 48"



W20-1  
48" X 48"



DIRECTION OF TRAFFIC



SIGN



WORK SITE



ARROW PANEL



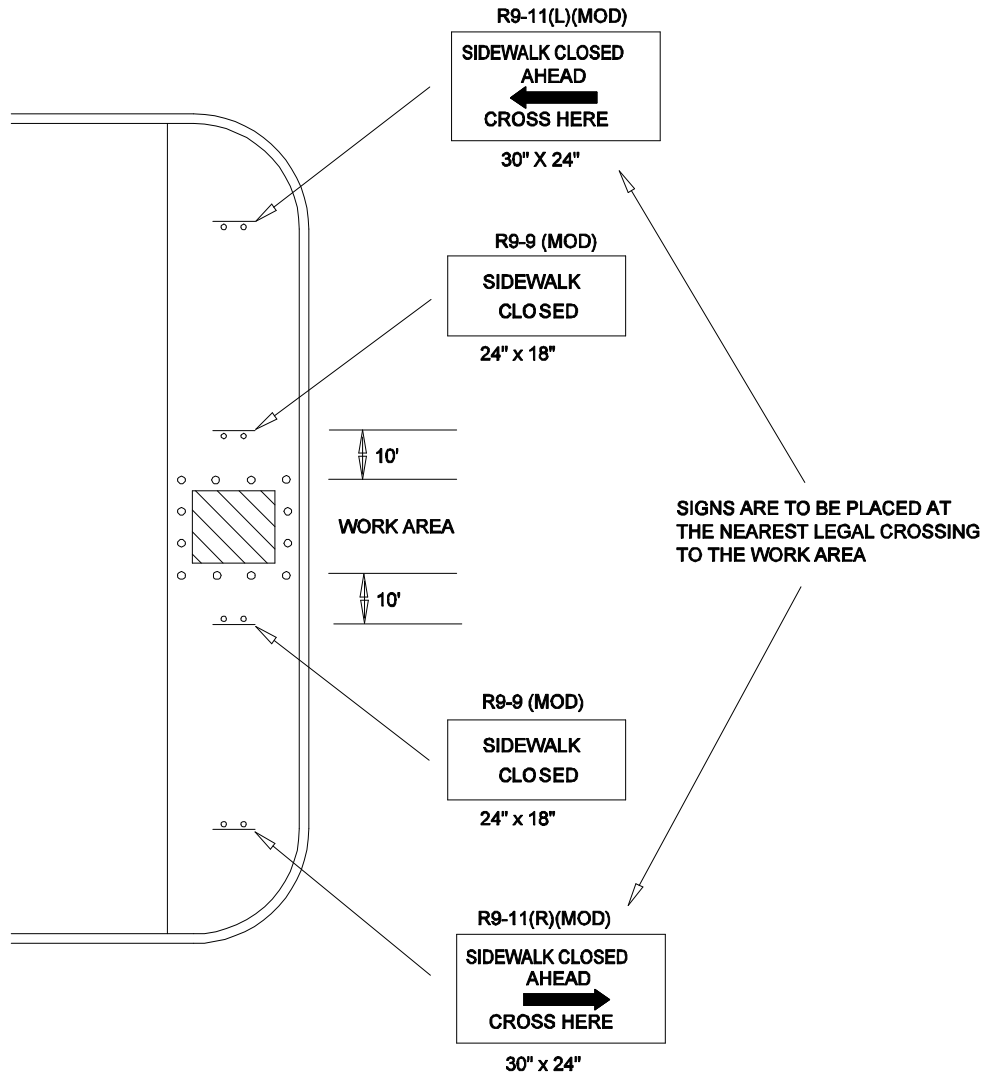
TRAFFIC DRUMS  
OR CONES

S<sup>1</sup> = 30 FT

S<sup>2</sup> = 10 FT

REVISION BY	DATE	APPROVED

DATE 07-01-12	TRAFFIC OPERATIONS SECTION MONTGOMERY COUNTY, MARYLAND
DES. BY MCDPWT	
DRAWN BY TCLE	TRAFFIC CONTROL FOR RIGHT TURN LANE CLOSURE
SCALE NTS	
	APPROVED _____ CHIEF, TRAFFIC OPERATIONS SECTION
	STANDARD TCP-106.02 _____ OF _____ SHEETS



SIGN



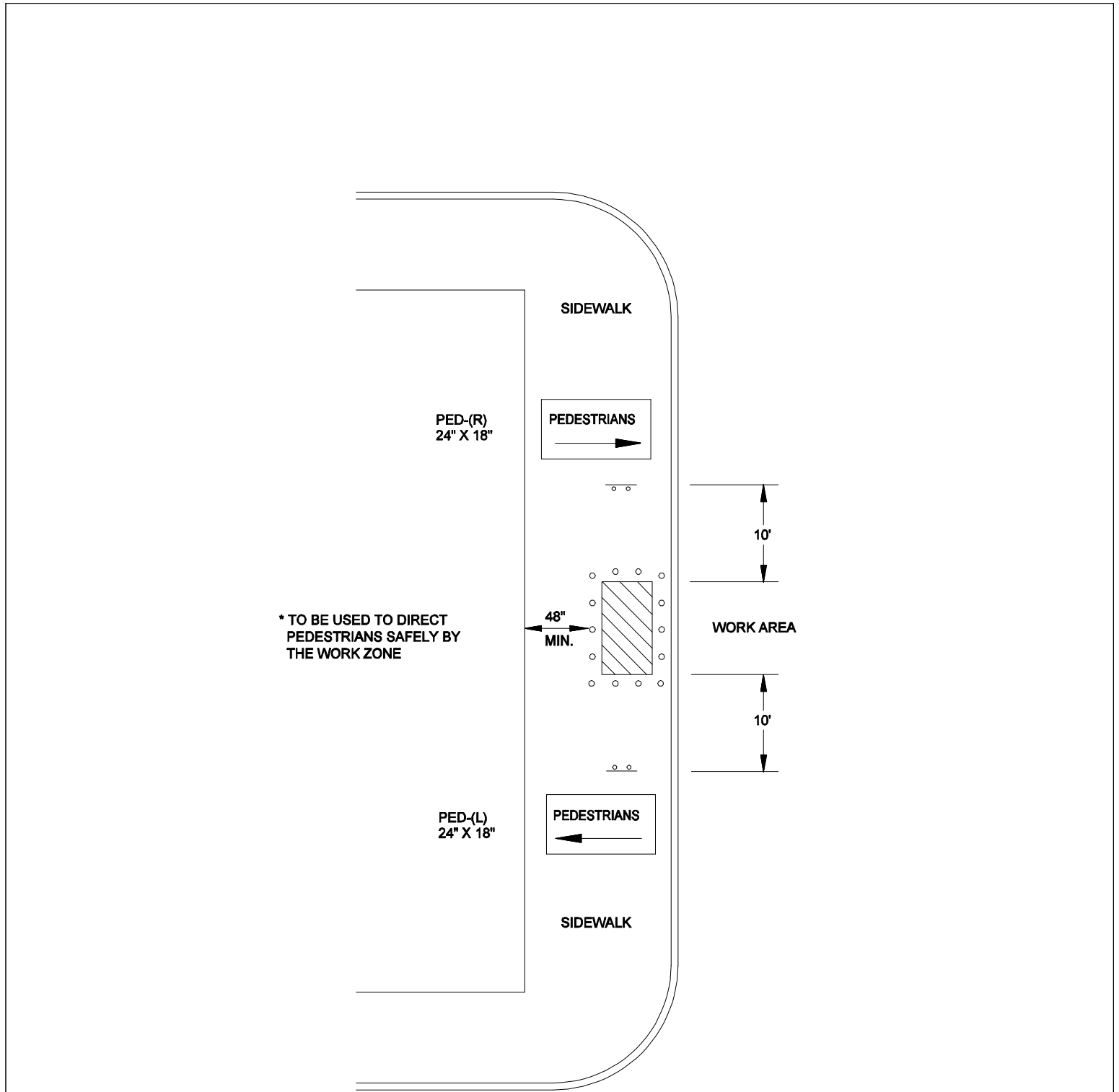
WORK SITE



TRAFFIC DRUMS  
OR CONES

REVISION BY	DATE	APPROVED

DATE 07-01-12	TRAFFIC OPERATIONS SECTION MONTGOMERY COUNTY, MARYLAND
DES. BY MCDPWT	
DRAWN BY TCLE	PEDESTRIAN CONTROL FOR TEMPORARY SIDEWALK CLOSURE
SCALE NTS	APPROVED _____ CHIEF, TRAFFIC OPERATIONS SECTION
	STANDARD TCP-107.01 _____ OF _____ SHEETS



**SIGN**



**WORK SITE**

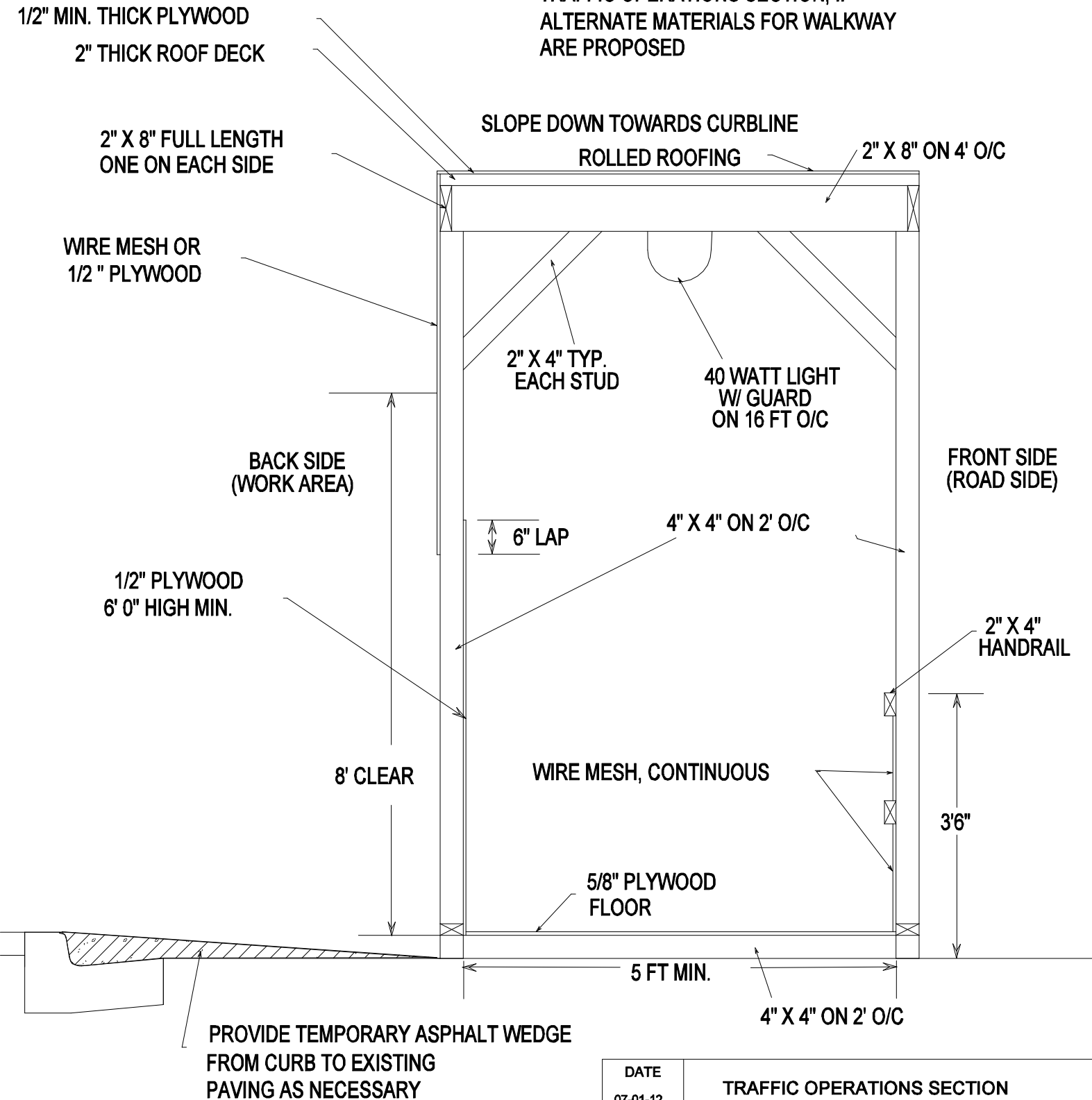


**TRAFFIC DRUMS  
OR CONES**

REVISION BY	DATE	APPROVED

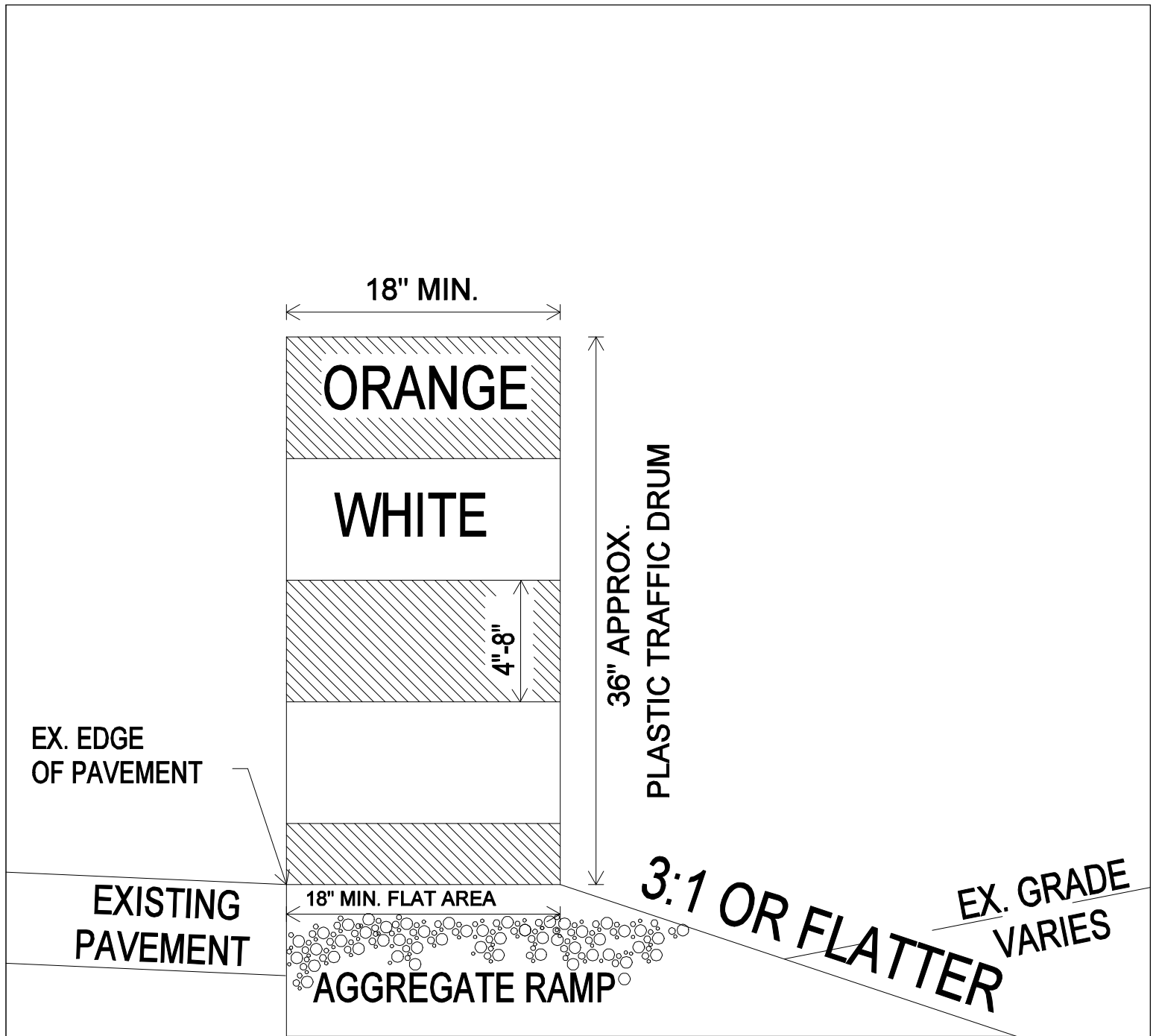
DATE 07-01-12	TRAFFIC OPERATIONS SECTION MONTGOMERY COUNTY, MARYLAND
DES. BY MCDPWT	
DRAWN BY TCLE	PEDESTRIAN CONTROL FOR SIDEWALK BY-PASS
SCALE NTS	APPROVED _____ CHIEF, TRAFFIC OPERATIONS SECTION
	STANDARD TCP-107.02 _____ OF _____ SHEETS

CONTRACTOR MUST PROVIDE SHOP  
DRAWING DETAIL OF COVERED WALKWAY  
FOR REVIEW AND APPROVAL TO THE  
TRAFFIC OPERATIONS SECTION, IF  
ALTERNATE MATERIALS FOR WALKWAY  
ARE PROPOSED

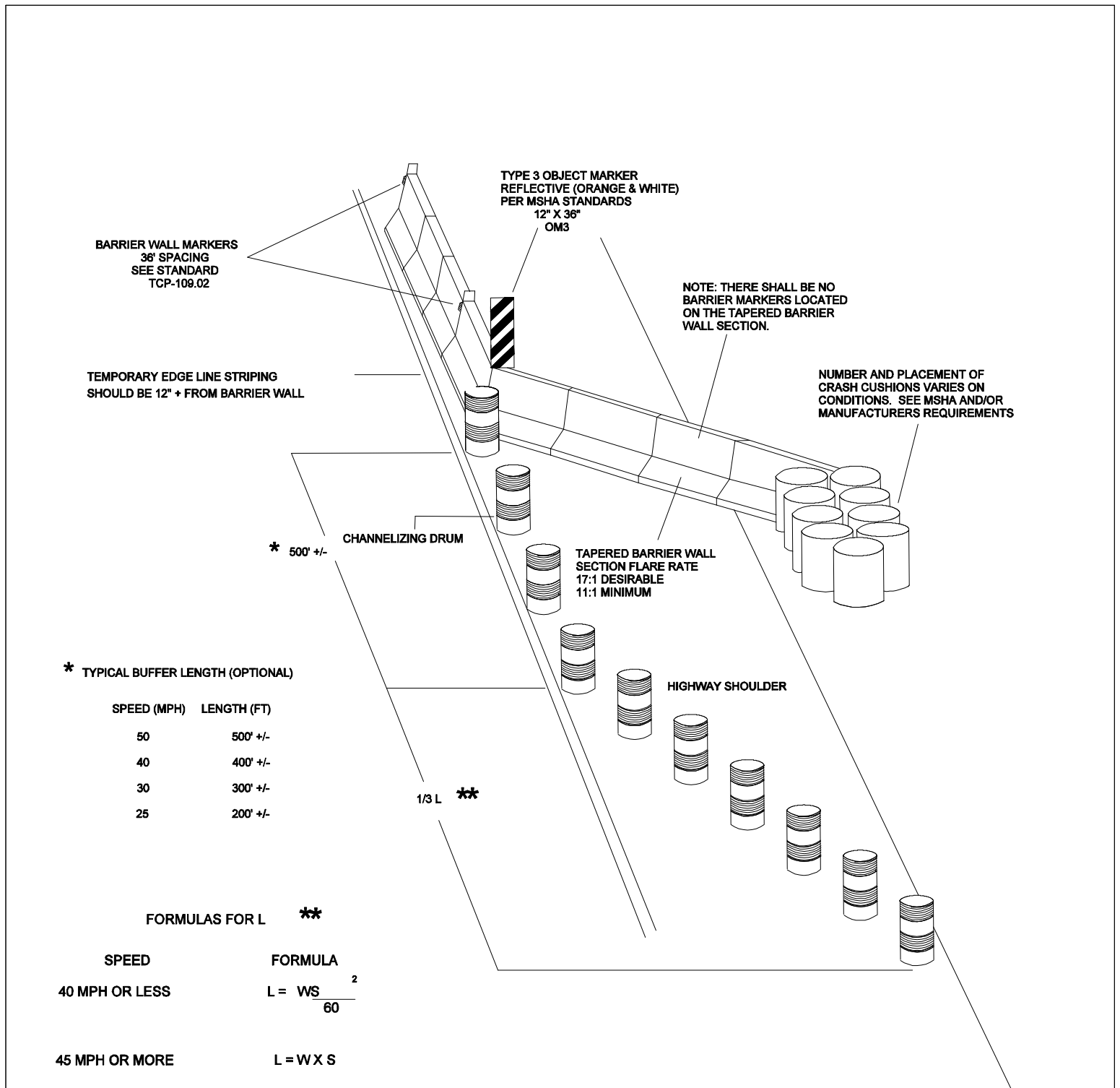


REVISION BY	DATE	APPROVED

DATE 07-01-12	TRAFFIC OPERATIONS SECTION MONTGOMERY COUNTY, MARYLAND
DES. BY MCDPWT	
DRAWN BY TCLE	COVERED WALKWAY
SCALE NTS	APPROVED  CHIEF, TRAFFIC OPERATIONS SECTION
STANDARD TCP-107.03 _____ OF _____ SHEETS	



			DATE 07-01-12	TRAFFIC OPERATIONS SECTION MONTGOMERY COUNTY, MARYLAND
			DES. BY MCDPWT	
REVISION BY	DATE	APPROVED	DRAWN BY TCLE	TEMPORARY AGGREGATE RAMP DETAIL FOR NON-WORKING HOURS
			SCALE NTS	APPROVED _____ CHIEF, TRAFFIC OPERATIONS SECTION
				STANDARD TCP-108.01 _____ OF _____ SHEETS



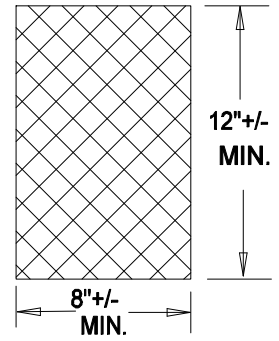
L = TAPER LENGTH IN FEET

W = WIDTH OF OFFSET IN FEET

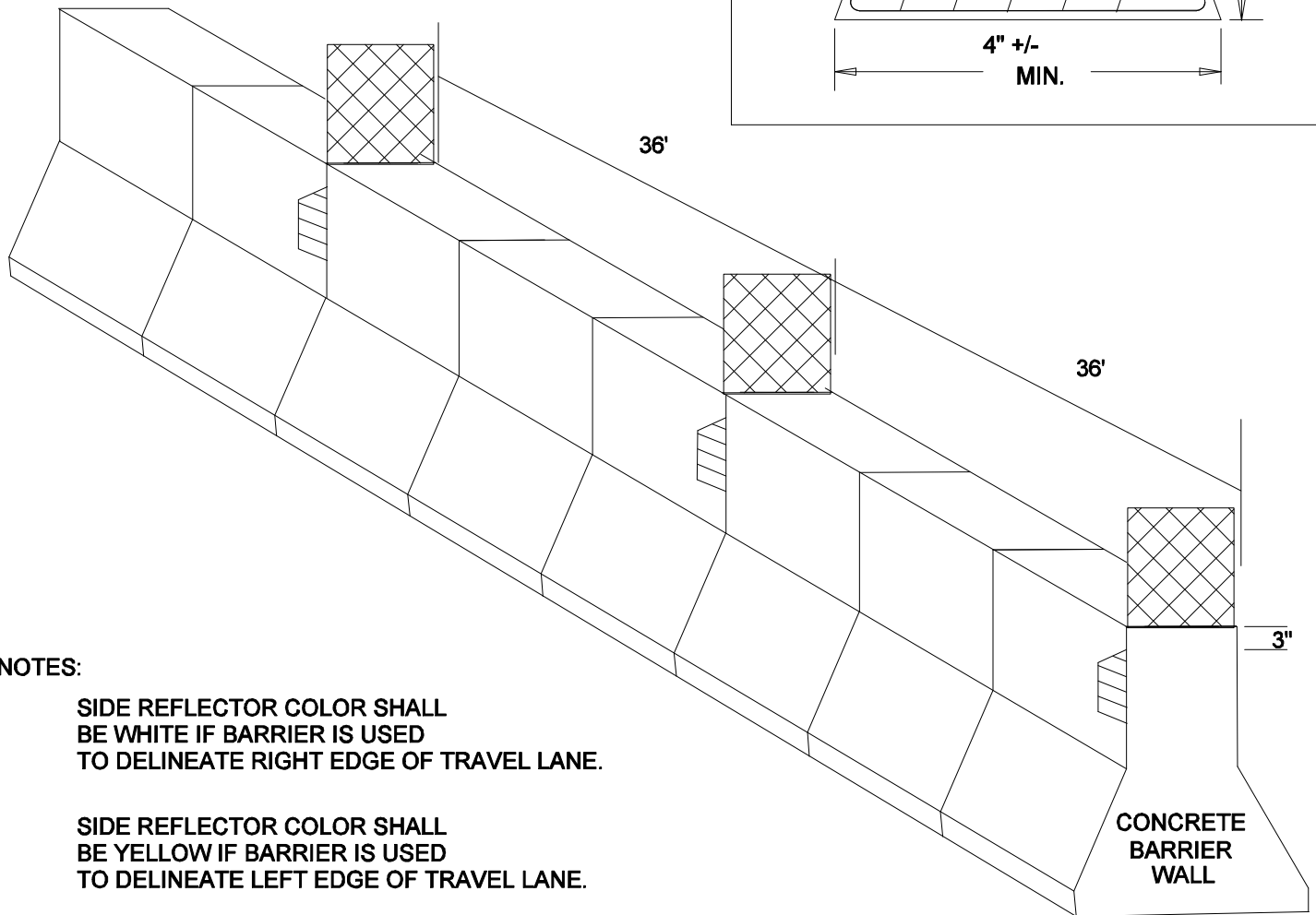
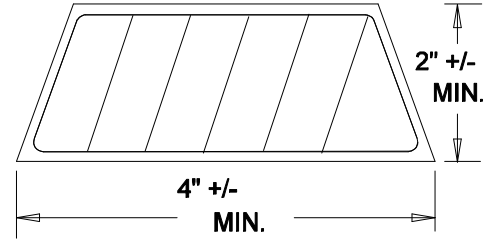
S = POSTED SPEED, OFF-PEAK  
85TH PERCENTILE SPEED PRIOR  
TO WORK STARTING, OR THE  
ANTICIPATED OPERATING SPEED  
IN MPH.

			DATE 07-01-12	TRAFFIC OPERATIONS SECTION MONTGOMERY COUNTY, MARYLAND
			DES. BY MCDPWT	
REVISION BY	DATE	APPROVED	DRAWN BY TCLE	ADVANCE CHANNELIZATION AND PROTECTION FOR BARRIER FLARE SECTIONS
			SCALE NTS	APPROVED _____ CHIEF, TRAFFIC OPERATIONS SECTION
			STANDARD TCP-109.01 _____ OF _____ SHEETS	

**TOP BARRIER WALL  
MARKER DETAIL**



**SIDE BARRIER WALL MARKER DETAIL**



**NOTES:**

SIDE REFLECTOR COLOR SHALL  
BE WHITE IF BARRIER IS USED  
TO DELINEATE RIGHT EDGE OF TRAVEL LANE.

SIDE REFLECTOR COLOR SHALL  
BE YELLOW IF BARRIER IS USED  
TO DELINEATE LEFT EDGE OF TRAVEL LANE.

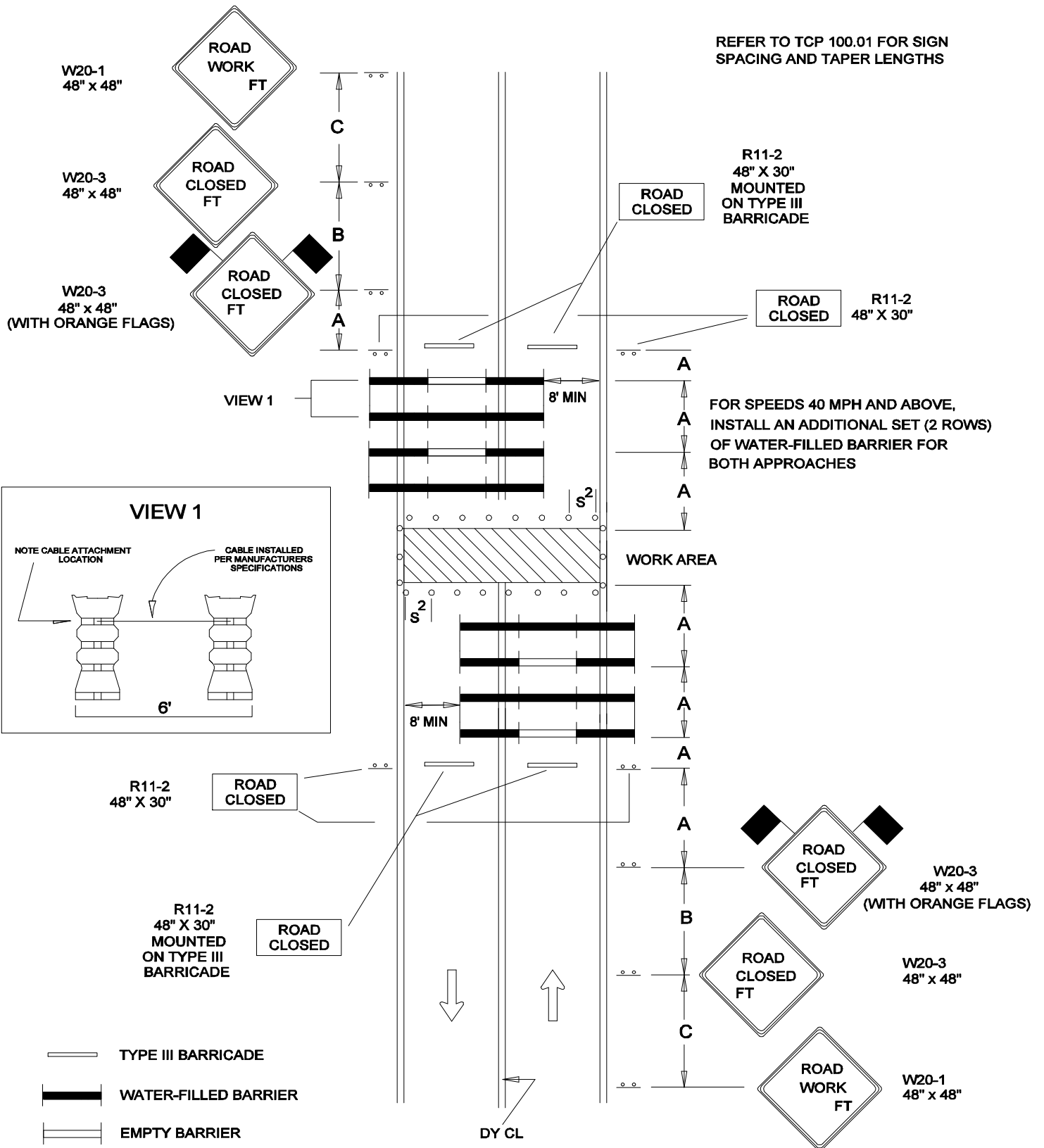
TOP REFLECTOR COLOR SHALL  
BE FLOURESENT ORANGE REGARDLESS  
OF EDGE OF TRAVEL LANE

REVISION BY	DATE	APPROVED

DATE 07-01-12	TRAFFIC OPERATIONS SECTION MONTGOMERY COUNTY, MARYLAND
DES. BY MCDPWT	
DRAWN BY TCLE	REFLECTORIZED MARKERS PLACEMENT DETAIL
SCALE NTS	APPROVED _____ CHIEF, TRAFFIC OPERATIONS SECTION
STANDARD TCP-109.02 _____ OF _____ SHEETS	



REFER TO TCP 100.01 FOR SIGN  
SPACING AND TAPER LENGTHS

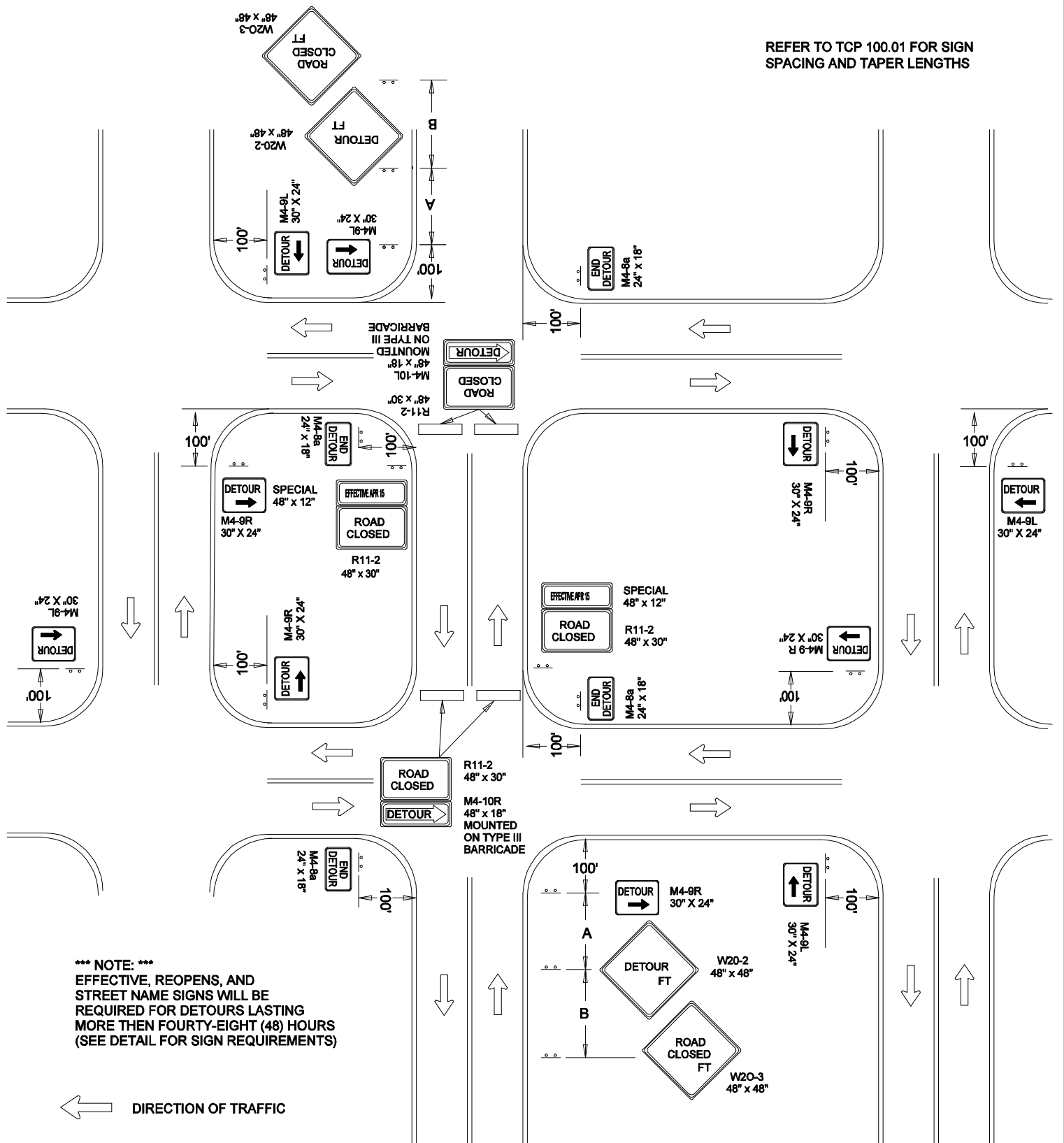


- TYPE III BARRICADE
- WATER-FILLED BARRIER
- EMPTY BARRIER
- DIRECTION OF TRAFFIC
- SIGN
- WORK SITE
- TRAFFIC DRUMS OR CONES
- $S^1 = 30 \text{ FT.}$
- $S^2 = 10 \text{ FT.}$

REVISION BY	DATE	APPROVED

DATE	07-01-12	TRAFFIC OPERATIONS SECTION MONTGOMERY COUNTY, MARYLAND	
DES. BY	MCDPWT		
DRAWN BY	TCLE	ROAD CLOSURE NON - INTERSECTION	
SCALE	NTS	APPROVED	
		CHIEF, TRAFFIC OPERATIONS SECTION	
		STANDARD TCP-110.01      OF      SHEETS	

**REFER TO TCP 100.01 FOR SIGN  
SPACING AND TAPER LENGTHS**



**\*\*\* NOTE: \*\*\***  
EFFECTIVE, REOPENS, AND  
STREET NAME SIGNS WILL BE  
REQUIRED FOR DETOURS LASTING  
MORE THEN FOURTY-EIGHT (48) HOURS  
(SEE DETAIL FOR SIGN REQUIREMENTS)



     **SIGN**

**WORK SITE**

### TYPE III BARICADE

**TRAFFIC DRUMS  
OR CONES**

**S<sup>1</sup>=30 FT.**

$$S^2 = 10 \text{ FT.}$$

DATE 07-01-12	TRAFFIC OPERATIONS SECTION MONTGOMERY COUNTY, MARYLAND
DES. BY	
MCDPWT	TRAFFIC CONTROL FOR TEMPORARY DETOUR
DRAWN BY	
TCLE	
SCALE	APPROVED  _____ CHIEF, TRAFFIC OPERATIONS SECTION
NTS	STANDARD TCP-110.02      ____ OF ____ SHEETS

REVISION BY	DATE	APPROVED

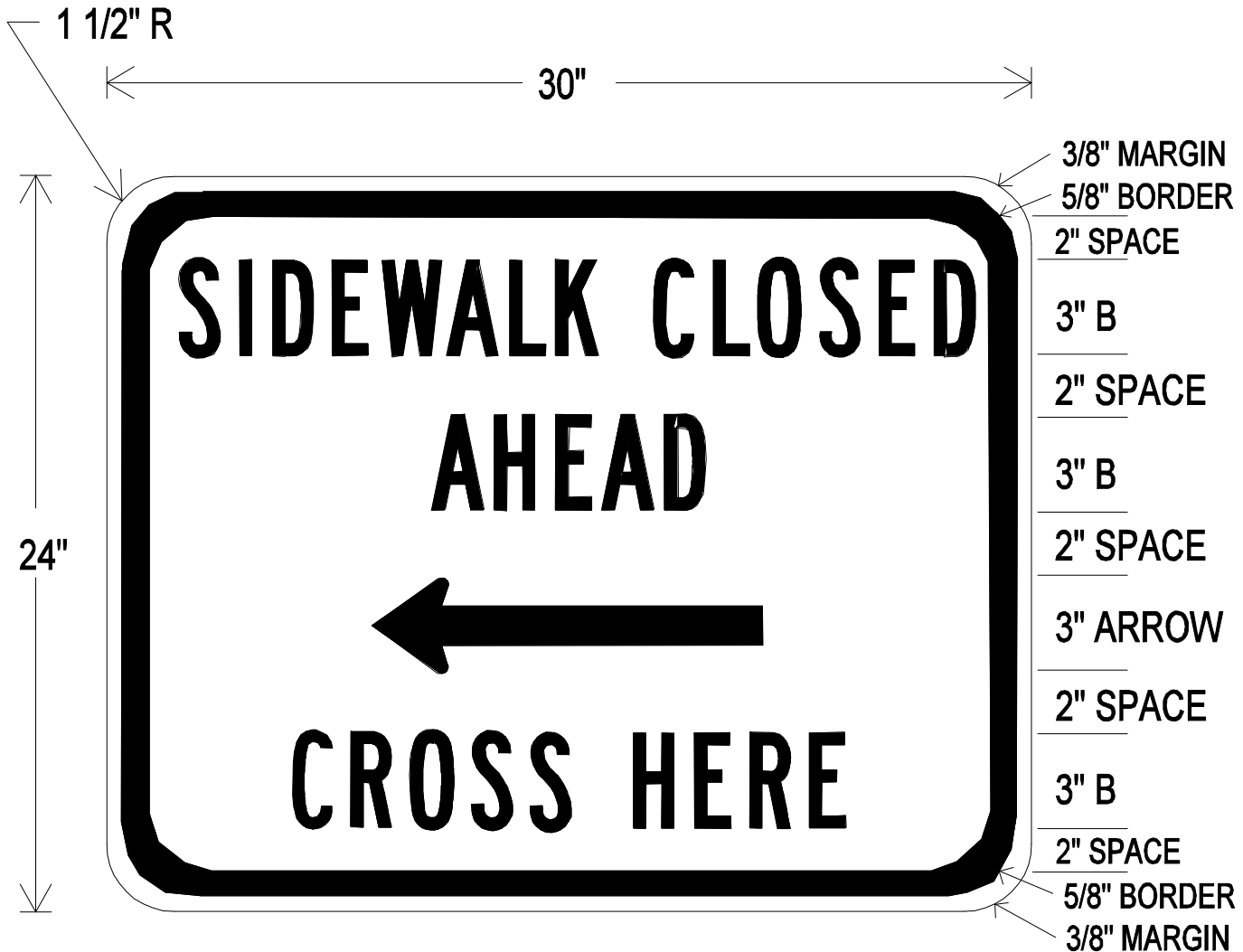
# R9-9 (MOD)



BLACK LEGEND AND BORDER  
ON WHITE BACKGROUND

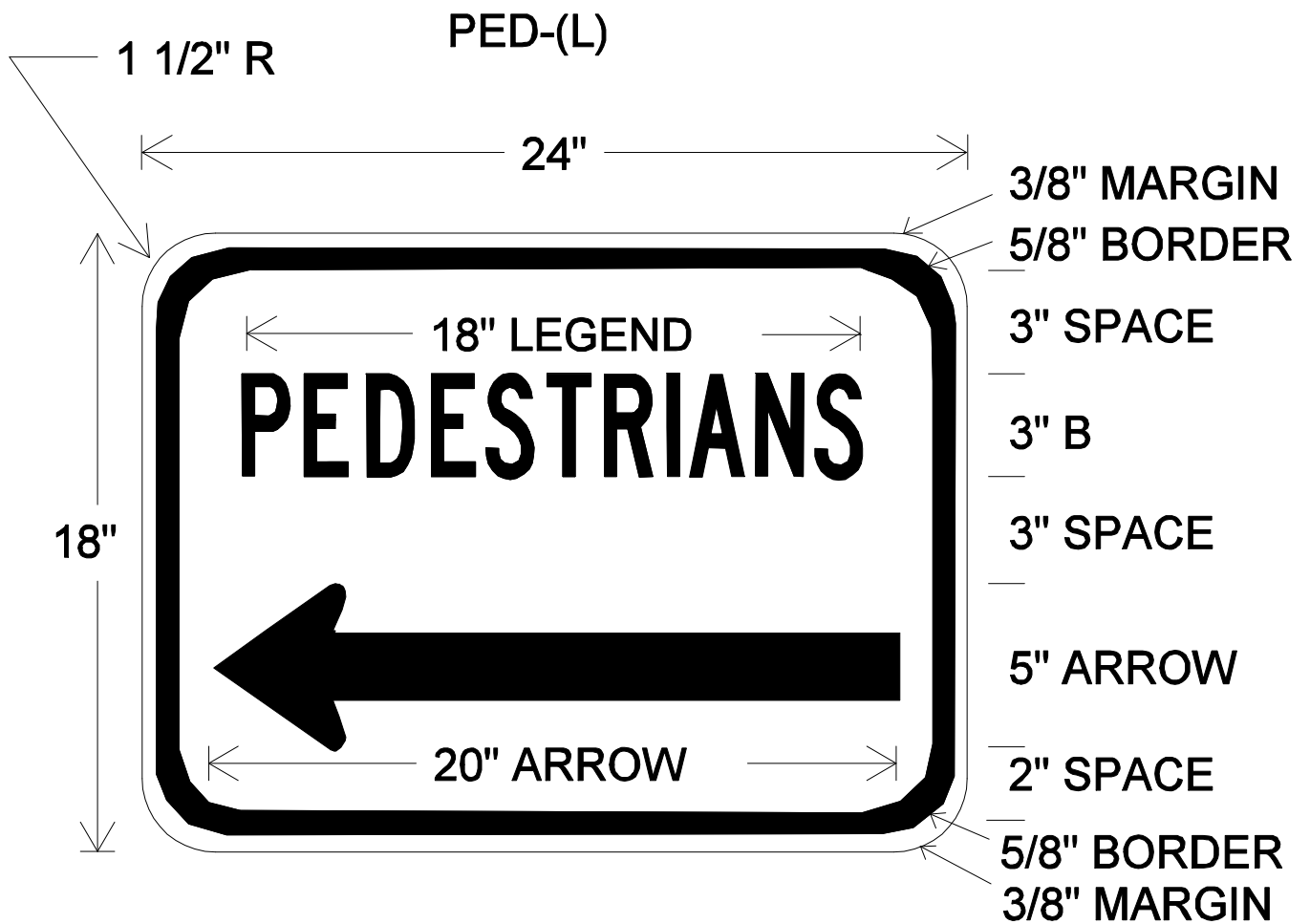
			DATE 07-01-12	TRAFFIC OPERATIONS SECTION MONTGOMERY COUNTY, MARYLAND
			DES. BY MCDPWT	SIGN DETAIL FOR TEMPORARY SIDEWALK CLOSURE
			DRAWN BY TCLE	
			SCALE NTS	APPROVED _____ CHIEF, TRAFFIC OPERATIONS SECTION
				STANDARD TCP-107.01.01 _____ OF _____ SHEETS
REVISION BY	DATE	APPROVED		

# R9-11(L)(MOD)



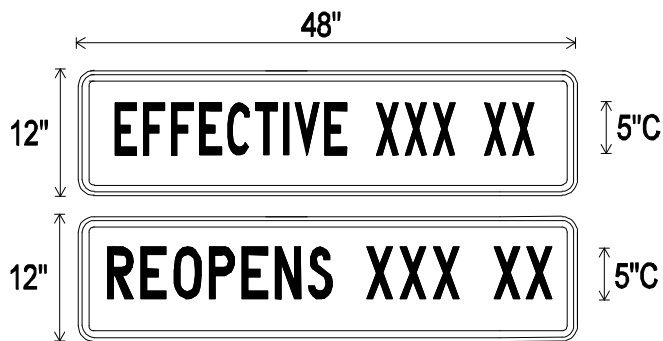
**BLACK LEGEND AND BORDER  
ON WHITE BACKGROUND**

			DATE 07-01-12	TRAFFIC OPERATIONS SECTION MONTGOMERY COUNTY, MARYLAND	
			DES. BY MCDPWT	SIGN DETAIL FOR TEMPORARY SIDEWALK CLOSURE	
			DRAWN BY TCLE		
			SCALE NTS	APPROVED _____ CHIEF, TRAFFIC OPERATIONS SECTION	
REVISION BY	DATE	APPROVED		STANDARD TCP-107.01.02 ____ OF ____ SHEETS	



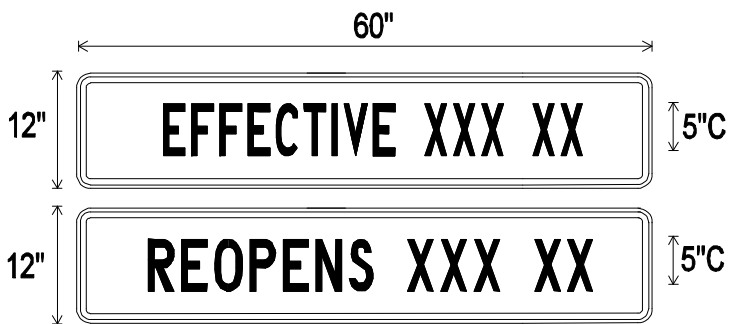
**BLACK LEGEND AND BORDER  
ON WHITE BACKGROUND**

			DATE 07-01-12	TRAFFIC OPERATIONS SECTION MONTGOMERY COUNTY, MARYLAND
			DES. BY MCDPWT	
REVISION BY	DATE	APPROVED	DRAWN BY TCLE	SIGN DETAIL FOR PEDESTRIAN SIDEWALK BY-PASS
			SCALE NTS	
				APPROVED _____ CHIEF, TRAFFIC OPERATIONS SECTION
				STANDARD TCP-107.02.01 _____ OF _____ SHEETS



BLACK LEGEND ON ORANGE BACKGROUND

48" X 12" SHALL BE MOUNTED ATOP  
R11-2 ROAD CLOSED SIGNS



BLACK LEGEND ON ORANGE BACKGROUND

60" X 12" SHALL BE MOUNTED ATOP  
R11-3 & R11-4 ROAD CLOSED SIGNS

ROAD CLOSED AND EFFECTIVE SIGNS SHALL BE PLACED TWO (2) WEEKS PRIOR TO THE ROAD CLOSURE. THE EFFECTIVE SIGN SHALL BE REMOVED AND REPLACED WITH THE REOPENS SIGN TWO DAYS AFTER THE ACTUAL DATE OF THE ROAD CLOSURE.



BLACK LEGEND ON WHITE BACKGROUND

FOR EXTENDED CLOSURES A "STREET NAME" SIGN  
SHALL BE MOUNTED ATOP ALL M4-9 (DETOUR) SIGNS  
ALONG ROADWAYS USED FOR THE DETOUR

IF ADDITIONAL LINES OF TEXT ARE NECESSARY,  
INCREASE HEIGHT IN INCREMENTS OF 12"

			DATE	TRAFFIC OPERATIONS SECTION MONTGOMERY COUNTY, MARYLAND	
			07-01-12		
			DES. BY	SIGN DETAILS FOR TEMPORARY DETOUR	
			MCDPWT		
			DRAWN BY	APPROVED	
			TCLE		
			SCALE	CHIEF, TRAFFIC OPERATIONS SECTION	
			NTS		
			STANDARD TCP-110.02.01 _____ OF _____ SHEETS		