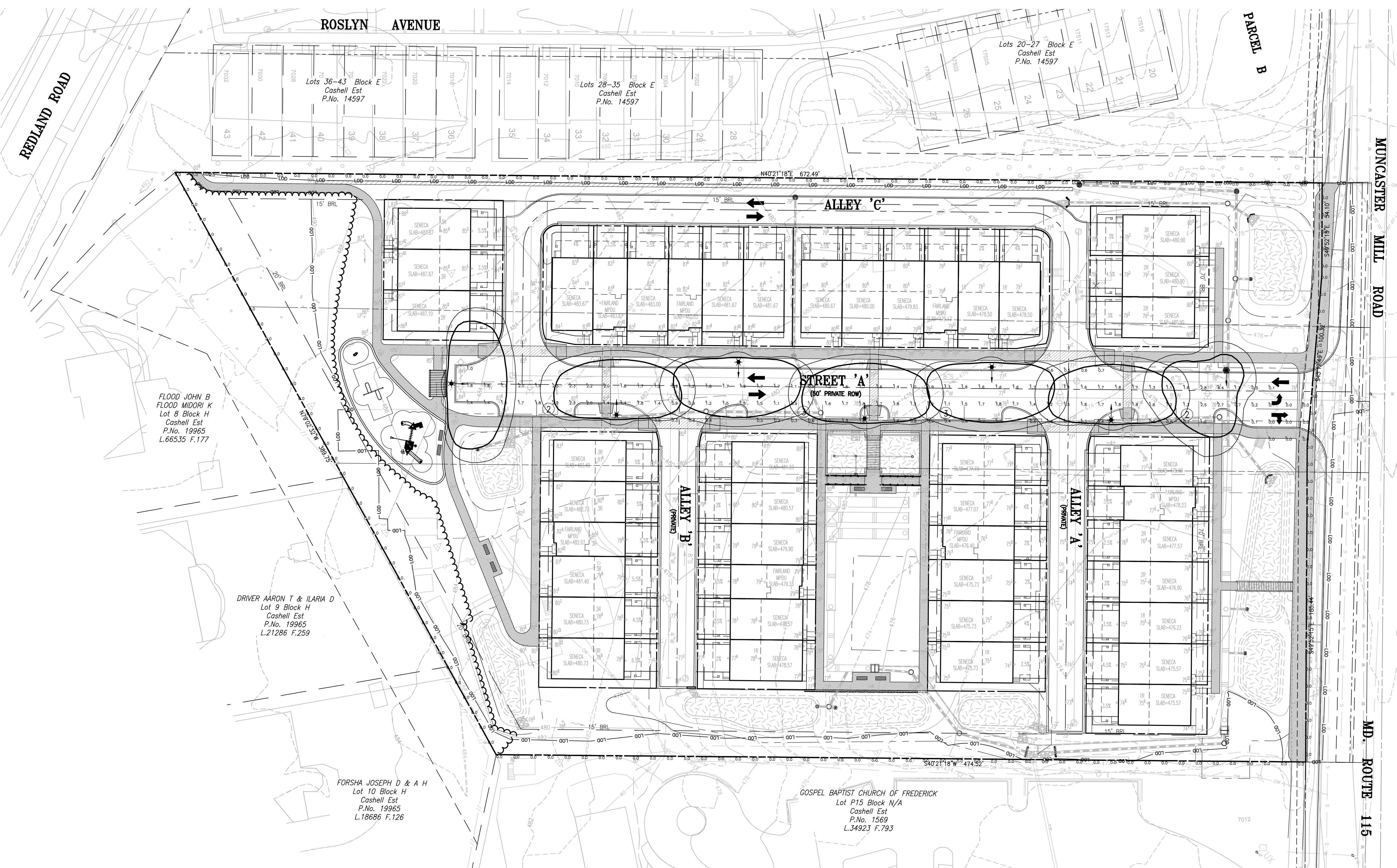


VICINITY MAP  
MO. CO. MAP PAGE 20 GRID D-9  
SCALE: 1" = 2000'

SCALE: 1" = 30'  
MARYLAND STATE PLANE COORDINATES NAD 83(91)



**DESCRIPTION**  
The Lexington AP2 LED outdoor luminaire displays the established design of traditional lamp styles with LED lighting technology. It is available with decorative lighting. As a decorative luminaire, the Lexington LED luminaire complements the architectural and environmental design of the site and roadway. It is a general AP2 LED luminaire technology design and is not intended for use in pedestrian and roadway applications.

**OPERATION FEATURES**  
**Construction**  
The luminaire is constructed from high quality materials. It is constructed from die-cast aluminum with a powder coated finish. The luminaire is constructed from high quality materials. It is constructed from die-cast aluminum with a powder coated finish. The luminaire is constructed from high quality materials. It is constructed from die-cast aluminum with a powder coated finish.

**Optics**  
The luminaire is constructed from high quality materials. It is constructed from die-cast aluminum with a powder coated finish. The luminaire is constructed from high quality materials. It is constructed from die-cast aluminum with a powder coated finish.

**Electrical**  
The luminaire is constructed from high quality materials. It is constructed from die-cast aluminum with a powder coated finish. The luminaire is constructed from high quality materials. It is constructed from die-cast aluminum with a powder coated finish.

**Finish**  
The luminaire is constructed from high quality materials. It is constructed from die-cast aluminum with a powder coated finish. The luminaire is constructed from high quality materials. It is constructed from die-cast aluminum with a powder coated finish.

**Warranty**  
The luminaire is constructed from high quality materials. It is constructed from die-cast aluminum with a powder coated finish. The luminaire is constructed from high quality materials. It is constructed from die-cast aluminum with a powder coated finish.

**Dimensions**  
The luminaire is constructed from high quality materials. It is constructed from die-cast aluminum with a powder coated finish. The luminaire is constructed from high quality materials. It is constructed from die-cast aluminum with a powder coated finish.

**CERTIFICATION DATA**  
The luminaire is constructed from high quality materials. It is constructed from die-cast aluminum with a powder coated finish. The luminaire is constructed from high quality materials. It is constructed from die-cast aluminum with a powder coated finish.

**ENERGY DATA**  
The luminaire is constructed from high quality materials. It is constructed from die-cast aluminum with a powder coated finish. The luminaire is constructed from high quality materials. It is constructed from die-cast aluminum with a powder coated finish.

**EPA**  
The luminaire is constructed from high quality materials. It is constructed from die-cast aluminum with a powder coated finish. The luminaire is constructed from high quality materials. It is constructed from die-cast aluminum with a powder coated finish.

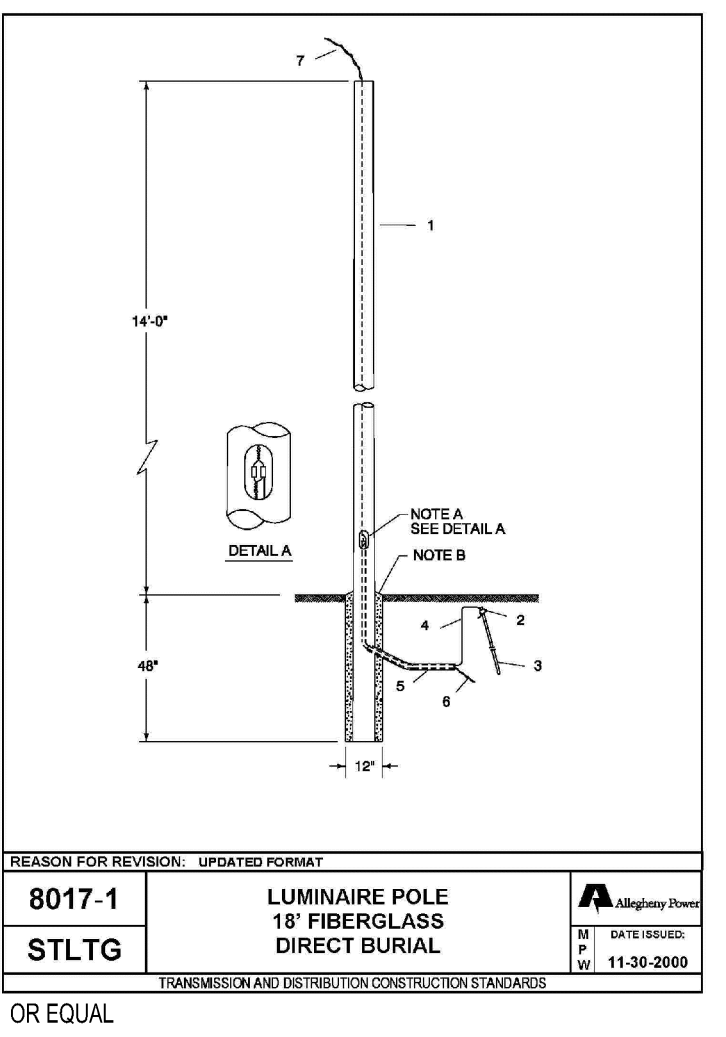
**Supporting Data**  
The luminaire is constructed from high quality materials. It is constructed from die-cast aluminum with a powder coated finish. The luminaire is constructed from high quality materials. It is constructed from die-cast aluminum with a powder coated finish.

**LEGEND**

- EX SIGNAL POLE
- EX MANHOLE
- EX STORM DRAIN MANHOLE
- EX UTILITY POLE
- EX GUY WIRE
- EX LIGHT
- EX SIGN
- EX FIRE HYDRANT
- EX PROPERTY LINE
- EX EASEMENT LINE
- EX METAL FENCE
- EX WOOD FENCE
- EX OVER HEAD WIRE
- LSD LIMIT OF DISTURBANCE
- PROPOSED RETAINING WALL
- PROPOSED BIO-RETENTION AREA
- SIDEWALK
- PROPOSED TREE LINE
- PROPOSED STREET LIGHT

**GRAPHIC SCALE**  
0 15 30 60  
SCALE: 1" = 30'

PHOTOMETRICS PREPARED BY CHESAPEAKE LIGHTING.



Lighting Design Criteria for Highways and Streets  
Luminance Method

Road and Pedestrian Conflict Area	Average Luminance	Av. Uniformity Ratio	Max. Uniformity Ratio	Max. Veiling Luminance Ratio
*Roadways	$L_{ave}$ (cd/m <sup>2</sup> )	$L_{ave} / L_{min}$ (Maximum Allowed)	$L_{max} / L_{min}$ (Maximum Allowed)	$V_{max} / L_{ave}$ (Maximum Allowed)
*Freeway Class A	0.6	3.5	6.0	0.3
*Freeway Class B	0.4	3.5	6.0	0.3
*Expressway	1.0	3.0	5.0	0.3
Streets				
Major	High: 1.2, Medium: 0.9, Low: 0.6	3.0	5.0	0.3
Collector	High: 0.8, Medium: 0.6, Low: 0.4	3.0	6.0	0.4
Local	High: 0.6, Medium: 0.5, Low: 0.3	6.0	10.0	0.4

RP-8-21 Table 10-1 and Table 11-1

**Luminaire Schedule**

Symbol	Qty	Label	Arrangement	Description	LLF	Luminaire Lumens	Luminaire Watts	Total Watts
●	1	1C-SLR	Single	GLAN-SA1C-827-U-SLR	0.864	4508	57	57
★	6	1C-T3-H	Single	GLAN-SA1C-827-U-T3-HSS	0.864	3839	57	456

**Luminaire Location Summary**

LumNo	Label	Insertion Point X	Insertion Point Y	Insertion Point Z	Orient
1	1C-T3-H	-71.153	272.517	16	0
2	1C-T3-H	141.347	230.517	16	270
3	1C-T3-H	13.847	229.517	16	270
4	1C-T3-H	289.847	228.017	16	270
5	1C-SLR	427.347	226.517	16	270
6	1C-T3-H	-52.153	219.017	16	37
7	1C-T3-H	66.347	198.517	16	90

**Calculation Summary**

Label	CalcType	Units	Avg	Max	Min	Avg/Min	Max/Min
Property	Illuminance	Fc	0.0	0.0	0.0	N.A.	N.A.
Line							
Street	Illuminance	Fc	1.3	4.4	0.0	N.A.	N.A.

Exhibit 11  
OZAH Case No: CU 24-07

**PROFESSIONAL CERTIFICATION**

I HEREBY CERTIFY THAT THESE DOCUMENTS WERE PREPARED OR APPROVED BY ME, AND THAT I AM A DULY LICENSED LANDSCAPE ARCHITECT UNDER THE LAWS OF THE STATE OF MARYLAND.

LICENSE NUMBER: 3822  
EXPIRATION DATE: 03/16/2025

Not valid without signature

**DEVELOPER'S CERTIFICATE**

THE UNDERSIGNED AGREES TO EXECUTE ALL FEATURES OF THE CONDITIONAL USE PLAN APPROVAL NO. \_\_\_\_\_ INCLUDING APPROVAL CONDITIONS, DEVELOPMENT PROGRAM AND CERTIFIED CONDITIONAL USE PLAN.

DEVELOPER'S NAME: CM MUNCASTER LLC  
ADDRESS: 1355 BEVERLY ROAD, SUITE 330, McLEAN, VA 22101  
PHONE: (703) 734-9855

SIGNATURE: \_\_\_\_\_

**UPDATES/REVISIONS:**

No.	Date	Description
10/27/23	UPDATE TO ADDRESS DRC COMMENTS.	SSS

**LIGHTING PLAN DESIGN FOR LIFE**

**MUNCASTER MILL PROPERTY**  
4th ELECTION DISTRICT  
MONTGOMERY COUNTY, MARYLAND

**CPJ Charles P. Johnson & Associates, Inc.**  
Civil and Environmental Engineers • Planners • Landscape Architects • Surveyors  
1751 Elton Rd., Ste. 300 Silver Spring, MD 20903 301-434-7000 Fax: 301-434-9394  
www.cpj.com • Silver Spring, MD • Gaithersburg, MD • Annapolis, MD • Greenbelt, MD • Frederick, MD • Fairfax, VA

CLIENT:	CM MUNCASTER LLC	1355 BEVERLY ROAD, SUITE 330, McLEAN, VA 22101
DATE:	JAN, 2022	FILE NO:
SCALE:	1" = 30'	2021-1588-62.D