

Autobahn Series AT180
Roadway Lighting


PRODUCT OVERVIEW

Features:

- **OPTICAL:** High beam and low beam optics for roadway lighting.
- **EFFICIENCY:** High efficiency LED technology for long life and low energy consumption.
- **ADJUSTABILITY:** Adjustable beam angle for optimal lighting distribution.
- **WEATHER RESISTANT:** IP65 rating for outdoor use.
- **INSTALLATION:** Easy installation with standard mounting hardware.
- **MAINTENANCE:** Low maintenance design with long life expectancy.

Applications:

- Highways
- Interstates
- Expressways
- Freeways
- Roadways
- Parking lots
- Plaza



ORDERING INFORMATION

Part Number	Description	Notes
AT180-1000-100	Autobahn Series AT180 Roadway Lighting, 1000mm, 100W	
AT180-1000-150	Autobahn Series AT180 Roadway Lighting, 1000mm, 150W	
AT180-1000-200	Autobahn Series AT180 Roadway Lighting, 1000mm, 200W	
AT180-1000-300	Autobahn Series AT180 Roadway Lighting, 1000mm, 300W	
AT180-1000-400	Autobahn Series AT180 Roadway Lighting, 1000mm, 400W	
AT180-1000-500	Autobahn Series AT180 Roadway Lighting, 1000mm, 500W	
AT180-1000-600	Autobahn Series AT180 Roadway Lighting, 1000mm, 600W	
AT180-1000-700	Autobahn Series AT180 Roadway Lighting, 1000mm, 700W	
AT180-1000-800	Autobahn Series AT180 Roadway Lighting, 1000mm, 800W	
AT180-1000-900	Autobahn Series AT180 Roadway Lighting, 1000mm, 900W	
AT180-1000-1000	Autobahn Series AT180 Roadway Lighting, 1000mm, 1000W	

Notes:

1. All dimensions are based on a total LUF of 1000mm.
2. Mounting height is 10000mm.
3. Mounting height is 10000mm.
4. Mounting height is 10000mm.
5. Mounting height is 10000mm.
6. Mounting height is 10000mm.
7. Mounting height is 10000mm.
8. Mounting height is 10000mm.
9. Mounting height is 10000mm.
10. Mounting height is 10000mm.

Autobahn Series AT180
Roadway Lighting

ORDERING INFORMATION

Notes:

1. All dimensions are based on a total LUF of 1000mm.
2. Mounting height is 10000mm.
3. Mounting height is 10000mm.
4. Mounting height is 10000mm.
5. Mounting height is 10000mm.
6. Mounting height is 10000mm.
7. Mounting height is 10000mm.
8. Mounting height is 10000mm.
9. Mounting height is 10000mm.
10. Mounting height is 10000mm.

Autobahn Series AT180
Roadway Lighting

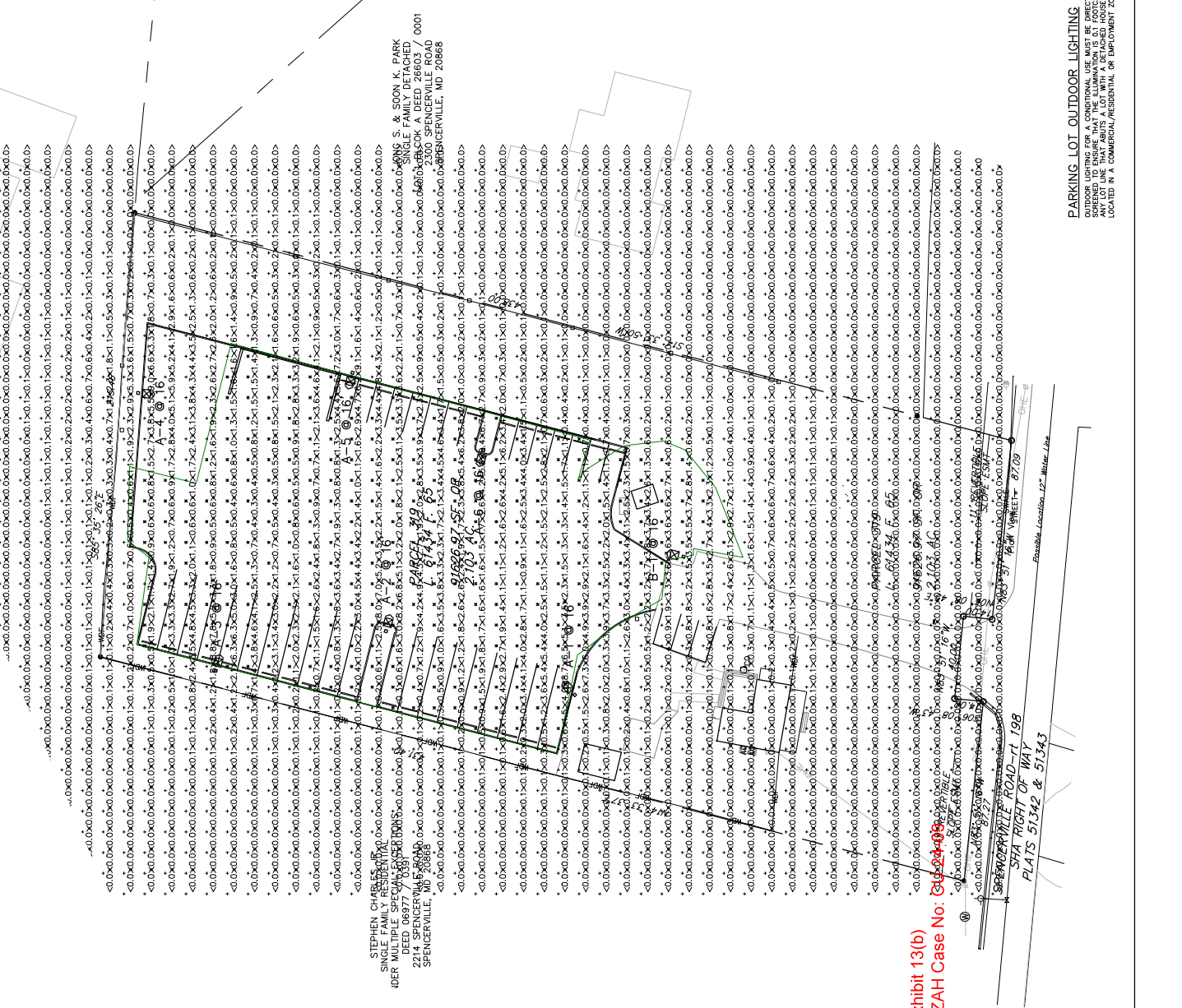
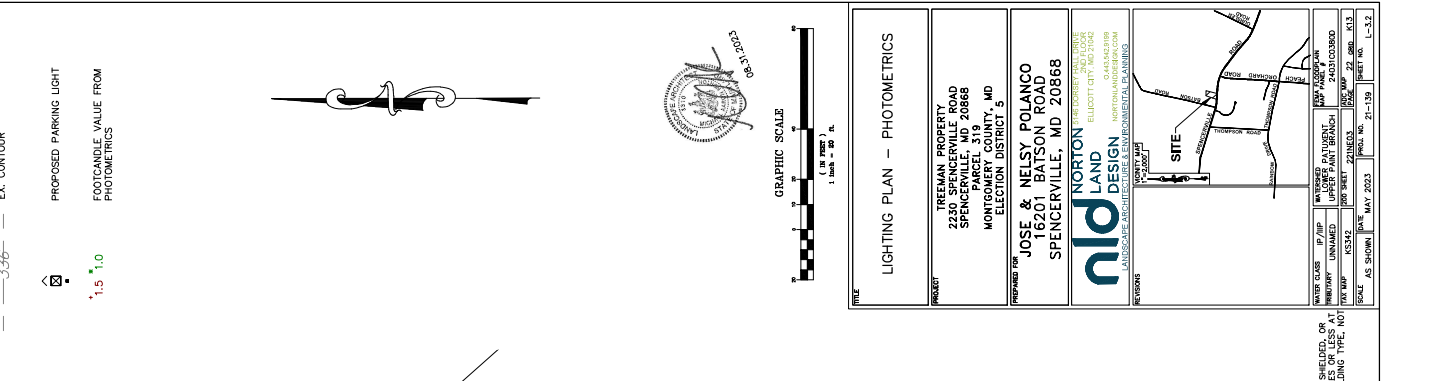
ORDERING INFORMATION

Notes:

1. All dimensions are based on a total LUF of 1000mm.
2. Mounting height is 10000mm.
3. Mounting height is 10000mm.
4. Mounting height is 10000mm.
5. Mounting height is 10000mm.
6. Mounting height is 10000mm.
7. Mounting height is 10000mm.
8. Mounting height is 10000mm.
9. Mounting height is 10000mm.
10. Mounting height is 10000mm.

LEGEND

- PROPERTY BOUNDARY
- EX. CONTOUR
- PROPOSED PARKING LIGHT
- FOOTCANDLE VALUE FROM PHOTOMETRICS



STEPHEN CHARLES
SINGLE FAMILY RESIDENTIAL
2214 SPENCERVILLE ROAD
SPENCERVILLE, MD 20868

JOSE & NELSY POLANCO
16201 BATSON ROAD
SPENCERVILLE, MD 20868

PHOTOMETRICS

PROJECT: TRESHAM PROPERTY
2230 SPENCERVILLE ROAD
SPENCERVILLE, MD 20868
MONTGOMERY COUNTY, MD
ELECTION DISTRICT 5

PREPARED FOR: JOSE & NELSY POLANCO
16201 BATSON ROAD
SPENCERVILLE, MD 20868

nld
NORTON LAND DESIGN
LANDSCAPE ARCHITECTURE & ENVIRONMENTAL PLANNING

ELIOTT CITY, MD 21740

DATE: MAY 2023

SCALE: AS SHOWN

PROJECT NO.: 21-119

SHEET NO.: L-32

WATER CLASS: P / ZIP
UNIMPAVED: UNIMPAVED
DRIVEWAY: 45342

DATE: MAY 2023

SCALE: AS SHOWN

PROJECT NO.: 21-119

SHEET NO.: L-32

Exhibit 13(b)
OZAH Case No. 21-119

PARKING LOT OUTDOOR LIGHTING

OUTDOOR LIGHTING FOR A CONDITIONAL USE MUST BE DIRECTED, SHIELDED, OR SCREENED TO ENSURE THAT THE ILLUMINATION IS AT LEAST EQUIVALENT TO THAT LOCATED IN A COMMERCIAL/RESIDENTIAL ZONE.