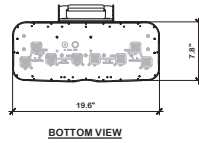
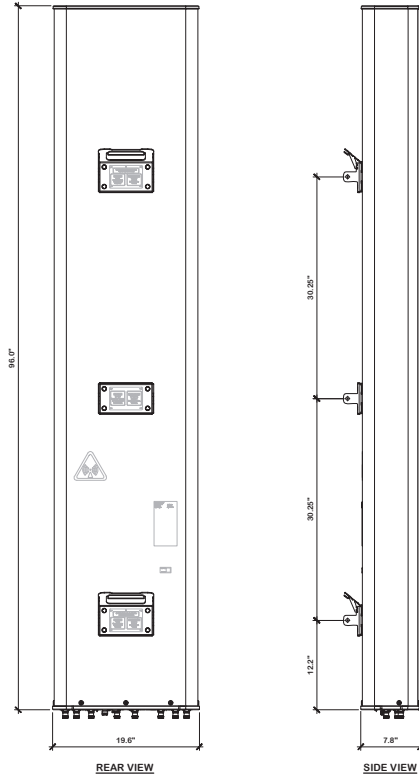
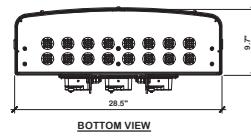
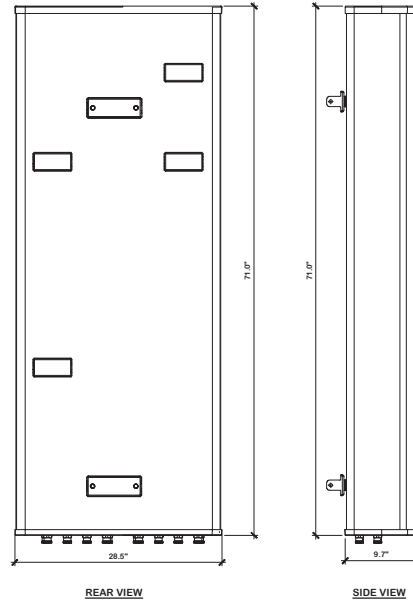


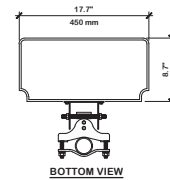
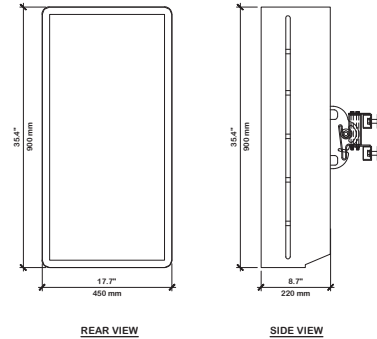
A B C D E F G H J K L M N P Q



**COMMSCOPE NNHH-65C-R4 DETAIL**  
NOT TO SCALE  
ANTENNA WEIGHT: 99.2 LBS



**CCI BSA33R-BU6BB-K DETAIL**  
NOT TO SCALE  
ANTENNA WEIGHT: 125.2 LBS  
(W/O BRACKET)



**NOKIA AQQQA AIRSCALE MAA 64T64R n77 480W**  
NOT TO SCALE  
ANTENNA WEIGHT: 127.9 LBS  
(W/O BRACKET)

Exhibit 13  
OZAH Case No: CU 24-14



7150 STANDARD DRIVE  
HANOVER, MD 21076



**MORRIS & RITCHE**  
**ASSOCIATES, INC.**  
Civil/Structural Engineers  
1215 St. Paul Street, Suite 400R  
Towson, Maryland 21286  
Office: (410) 571-4300  
Fax: (410) 571-1748



1997 ANNAPOLIS EXCHANGE PARKWAY, SUITE 200  
ANNAPOLIS, MD 21401  
PHONE: (410) 283-8465  
FAX: (410) 220-2962

SITE ID: SIMD010145  
SITE NAME: DUNNVAANT RELO FOR BOYER PLACE (YESHIVA TEMP) (FA NUMBER: 12573579)  
SITE ADDRESS: 2010 LINDEN LANE SILVER SPRING, MD 20910 MONTGOMERY COUNTY

REVISION BLOCK		
NO.	DESCRIPTION	DATE
	COUNTY COMMENTS	08/15/23
	COUNTY COMMENTS	07/20/23
	PERMIT DWGS	07/13/23



**PROFESSIONAL CERTIFICATION**  
I HEREBY CERTIFY THAT THESE DOCUMENTS WERE PREPARED OR APPROVED BY ME, AND THAT I AM A DULY LICENSED PROFESSIONAL ENGINEER UNDER THE LAWS OF THE STATE OF MARYLAND, LICENSE NO. 32384, EXPIRATION DATE: 11/10/2023.

DRAWN BY: AJL  
DESIGNED BY: AJL  
REVIEWED BY: RJD  
ORIGINAL DATE: 06/22/2023  
MRA PROJECT #: 18291.213



Know what's below.  
Call before you dig.

PROTECT YOURSELF. OBEY THESE WARNING SIGNS. NOTICE: THIS DRAWING DOES NOT INCLUDE NECESSARY COMMENTS, OR CONSTRUCTION DETAILS, ALL INFORMATION MUST BE OBTAINED FROM THE OCCUPATIONAL SAFETY AND HEALTH ACT OF 1970 AND ALL RULES AND REGULATIONS HERE TO APPROPRIATE.

SHEET TITLE

Antenna  
Details

SHEET NUMBER

C-6