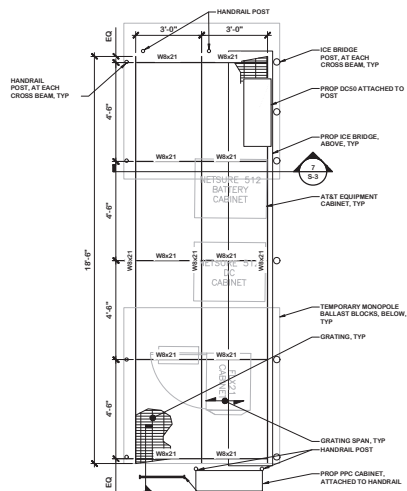


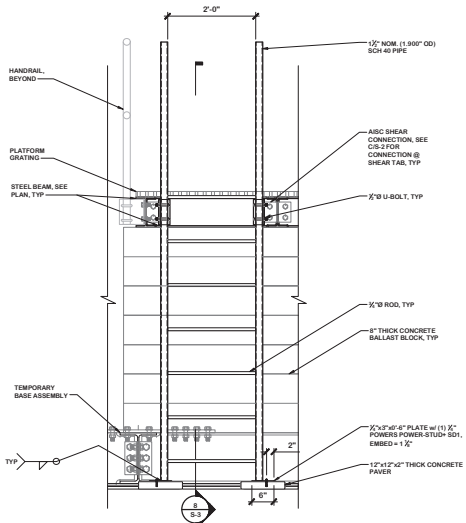
A B C D E F G H J K L M N P Q



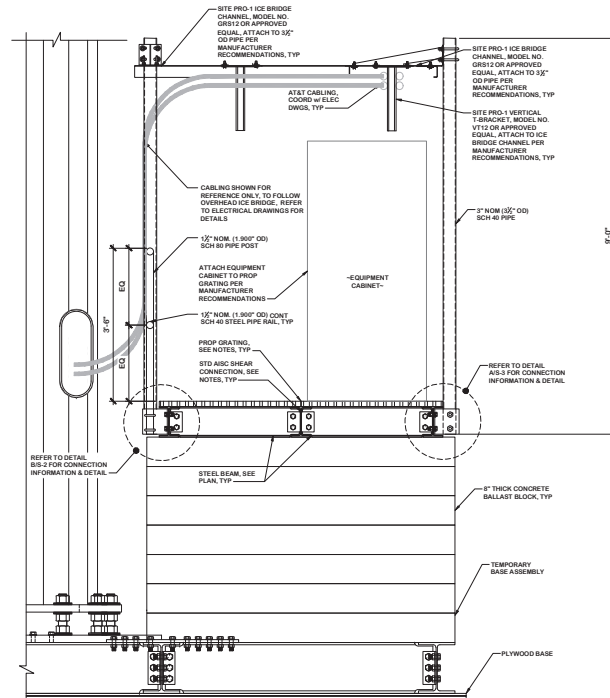
**EQUIPMENT PLATFORM FRAMING PLAN**  
SCALE: 3/4" = 1'-0"

**PLATFORM FRAMING NOTES**

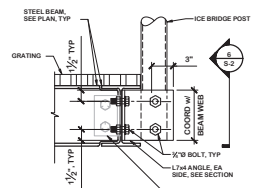
1. PLATFORM CONSTRUCTION SHALL CONSIST OF GALVANIZED STEEL GRATING WITH 1/2"x2" BEARING BARS SPACED AT 12". SUPPORTED BY STEEL BEAMS. ATTACH GRATING TO ALL SUPPORTING STEEL BEAMS IN ACCORDANCE WITH MANUFACTURER'S REQUIREMENTS.
2. ALL STEEL EXPOSED TO WEATHER SHALL RECEIVE A HOT-DIPPED GALVANIZED FINISH.
3. ALL BEAM-BEAM CONNECTIONS SHALL BE STANDARD SINGLE PLATE AS-BUILT SHEAR CONNECTIONS, UNLESS NOTED OTHERWISE. SEE GENERAL NOTES FOR ADDITIONAL INFORMATION.



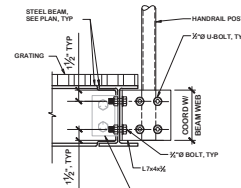
**ACCESS LADDER DETAIL**  
SCALE: 3/4" = 1'-0"



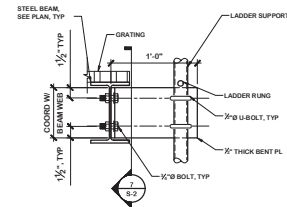
**TYPICAL EQUIPMENT PLATFORM**  
SCALE: 3/4" = 1'-0"



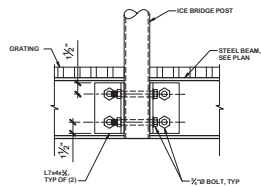
**TYPICAL ICE BRIDGE ATTACHMENT**  
SCALE: 1/2" = 1'-0"



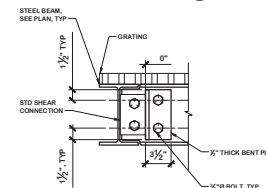
**TYPICAL HANDRAIL ATTACHMENT**  
SCALE: 1/2" = 1'-0"



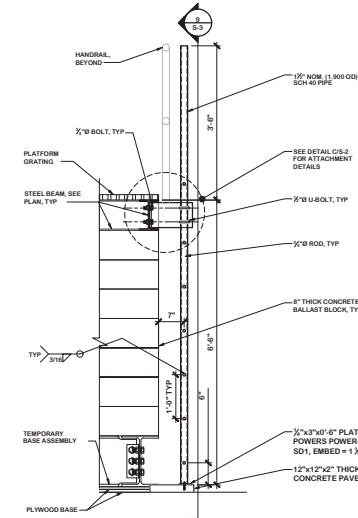
**TYPICAL LADDER ATTACHMENT**  
SCALE: 1/2" = 1'-0"



**TYPICAL ICE BRIDGE ATTACHMENT**  
SCALE: 1/2" = 1'-0"



**TYPICAL LADDER ATTACHMENT**  
SCALE: 1/2" = 1'-0"



**ACCESS LADDER DETAIL**  
SCALE: 3/4" = 1'-0"



7150 STANDARD DRIVE  
HANOVER, MD 21076



**MORRIS & RITCHE ASSOCIATES, INC.**  
Civil/Structural Engineers  
1225 St. Paul Street, Suite 400R  
Towson, Maryland 21286  
Office: (410) 271-1500  
Fax: (410) 271-1749



1897 ANNAPOLIS EXCHANGE PARKWAY, SUITE 200  
ANNAPOLIS, MD 21401  
PHONE: (410) 283-8466  
FAX: (410) 220-2962

**SITE ID:** SIMD010145  
**SITE NAME:** DUNAWANT RELO FOR BOYER PLACE (YESHIVA TEMP) (FA NUMBER: 1257379)  
**SITE ADDRESS:** 2010 LINDEN LANE SILVER SPRING, MD 20910 MONTGOMERY COUNTY

NO.	DESCRIPTION	DATE
	COUNTY COMMENTS	08/15/23
	COUNTY COMMENTS	07/20/23
	PERMIT DWGS	07/13/23



**PROFESSIONAL CERTIFICATION**  
I HEREBY CERTIFY THAT THESE DOCUMENTS WERE PREPARED OR APPROVED BY ME, AND THAT I AM A DULY LICENSED PROFESSIONAL ENGINEER UNDER THE LAWS OF THE STATE OF MARYLAND, LICENSE NO. 32384. EXPIRATION DATE: 11/10/2023.

**DRAWN BY:** AJL  
**DESIGNED BY:** AJL  
**REVIEWED BY:** RJD  
**ORIGINAL DATE:** 06/22/2023  
**MRA PROJECT #:** 18291.213



**Know what's below. Call before you dig.**

PROTECT YOURSELF. OBEY THESE WARNING SIGNS.  
THIS DRAWING DOES NOT INCLUDE NECESSARY CONSTRUCTION. SEE CONSTRUCTION SAFETY PLAN FOR CONSTRUCTION. CALL 811 AND COMPARE WITH THE OCCUPATIONAL SAFETY AND HEALTH ACT OF 1970 AND ALL RULES AND REGULATIONS HERE TO APPROPRIATE.

**SHEET TITLE**

**Equipment Platform Details**

**SHEET NUMBER**

**S-3**

**Exhibit 17**

**OZAH Case No. CU 24-14**