

A B C D E F G H J K L M N P Q

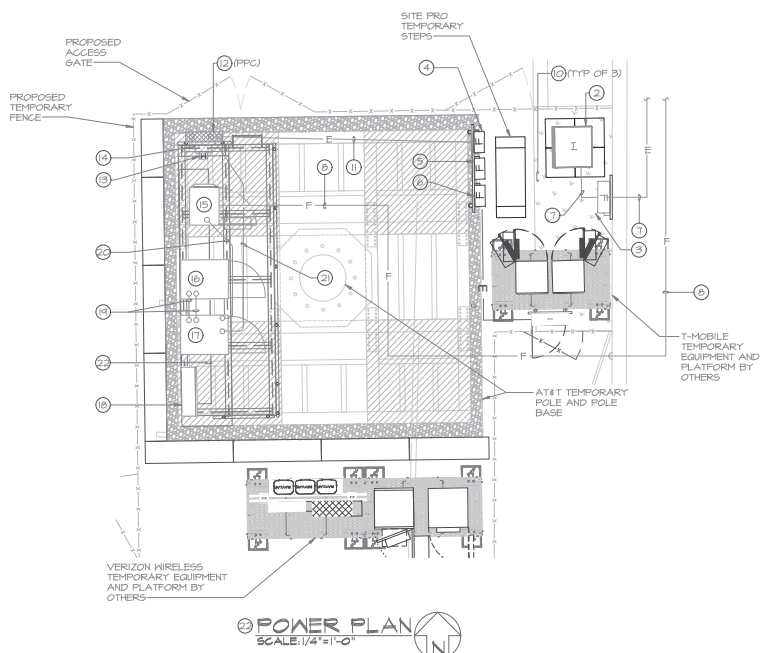
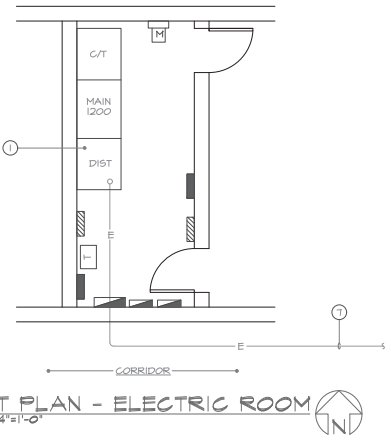


Exhibit 21
OZAH Case No: CU 24-14



DRAWING NOTES

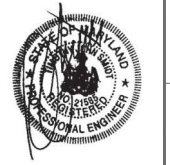
- 1 EXISTING 277/480V, 3Ø, 4W 2500A SWITCHBOARD TO REMAIN. PROVIDE AND INSTALL NEW 3P225A BREAKER IN AVAILABLE SPACE. PROVIDE PHENOLIC NAMEPLATE READING "EXTERIOR CARRIER'S TEMP ELECTRIC SERVICE".
- 2 PROPOSED 480 VOLT, 3Ø, 3W DELTA - 120/208 VOLT, 3Ø, 4W NYE, WEATHERPROOF 150 KVA TRANSFORMER MOUNTED ON 2'X2' CONCRETE PADS. ADJUST TAP SETTINGS TO ACCOMMODATE FOR VOLTAGE DROP LOSSES.
- 3 PROVIDE NEW WEATHERPROOF 600 VOLT, 3Ø/400A SAFETY DISCONNECT SWITCH MOUNTED ON KINDORF BACKBOARD. PROVIDE PHENOLIC NAMEPLATE READING "150 KVA TRANSFORMER PRIMARY DISCONNECT SWITCH".
- 4 PROVIDE NEW WEATHERPROOF 240V, 2P200A RATED DISCONNECT SWITCH FUSED @ 200 AMPS AND MOUNTED ON NEW UTILITY BACKBOARD. PROVIDE PHENOLIC NAMEPLATE READING "AT&T TEMP EQUIPMENT". CONNECT TO TRANSFORMER SECONDARY A AND B PHASES.
- 5 PROVIDE NEW WEATHERPROOF 240V, 2P200A RATED DISCONNECT SWITCH FUSED @ 200 AMPS AND MOUNTED ON NEW UTILITY BACKBOARD. PROVIDE PHENOLIC NAMEPLATE READING "MOBILE TEMP EQUIPMENT". CONNECT TO TRANSFORMER SECONDARY C AND A PHASES.
- 6 PROVIDE NEW WEATHERPROOF 240V, 2P200A RATED DISCONNECT SWITCH FUSED @ 200 AMPS AND MOUNTED ON NEW UTILITY BACKBOARD. PROVIDE PHENOLIC NAMEPLATE READING "VERIZON TEMP EQUIPMENT". CONNECT TO TRANSFORMER SECONDARY B AND C PHASES.
- 7 EXTEND 3/4"Ø, #4 GRD - 2" CONDUIT FROM NEW 3P225A BREAKER MOUNTED IN EXISTING SPACE LOCATED IN BUILDING MAIN ELECTRIC ROOM SWITCHBOARD. EXTEND FEEDERS THROUGH DROP CEILING, DOWN HALLWAY AND PUNCH THROUGH EXTERIOR WALL DOWN EXTERIOR WALL AND BE SUPPORTED BY SLEEPERS TO PROPOSED AT&T TEMPORARY FLX21 CABINET. SEAL ALL PENETRATIONS WITH APPROVED WEATHERPROOF SEALANT. CONTRACTOR SHALL CALCULATE VOLTAGE DROP PER N.E.C. WITH LINEAR FEET OF APPROVED CABLE ROUTING PRIOR TO INSTALLATION.
- 8 EXTEND ONE (1) - 2" CONDUIT WITH NYLON RULL ROPE FROM PROPOSED TEO BACK BOARD LOCATED IN SCHOOL TELEPHONE CLOSET #44A AND EXTEND THROUGH DROP CEILING, DOWN HALLWAY AND PUNCH THROUGH EXTERIOR WALL DOWN EXTERIOR WALL AND BE SUPPORTED BY SLEEPERS TO PROPOSED AT&T TEMPORARY FLX21 CABINET. SEAL ALL PENETRATIONS WITH APPROVED WEATHERPROOF SEALANT. COORDINATE FIBER ROUTING WITH AT&T REPRESENTATIVE IN THE FIELD.
- 9 EXTEND 3/4"Ø, #4 GRD - 2" CONDUIT FROM 600 VOLT, 3P400A PRIMARY SAFETY DISCONNECT TO 150 KVA TRANSFORMER PRIMARY.
- 10 EXTEND 3/8"Ø/1/2 ANS GRD - 2" CONDUIT FROM 150 KVA TRANSFORMER SECONDARY SIDE TO EACH PROPOSED TEMPORARY CARRIER'S 200A FUSED DISCONNECT SWITCH MOUNTED ON BACKBOARD. ROUTE CONDUIT ABOVE GRADE AND UNDER NEW SITE PRO WALKWAY.
- 11 EXTEND 3/8"Ø/1/4 ANS GRD - 2" CONDUIT FROM AT&T 2P200A FUSED DISCONNECT TO AT&T 120/240V, 1Ø, 3W 200A 42 POLE INTERSECT PANEL P (MODEL:AAA-6-12200-95-3R-CL-R).
- 12 PROPOSED NEW 120/240V, 1Ø, 3W 200A 42 POLE INTERSECT PANEL P (MODEL:AAA-6-12200-95-3R-CL-R) WITH INTEGRAL AUTOMATIC TRANSFER SWITCH AND CAMEBOX MOUNTED ON NEW H-FRAME BACKBOARD. REFER TO POWER RISER, SHEET E-3 AND PANEL SCHEDULES ON SHEET E-4 FOR ADDITIONAL INFORMATION.
- 13 PROVIDE E-MON D-NON OR EQUAL 120/240V, 1Ø, 3W TENANT SUB-METER (EXTEND WIRING AS DIRECTED BY MANUFACTURER'S SPECIFICATIONS). PROVIDE PHENOLIC NAMEPLATE READING "AT&T EQUIPMENT". CONTRACTOR SHALL BE RESPONSIBLE FOR PROVIDING AND INSTALLING A FUNCTIONAL TENANT SUB-METER INSTALLATION.
- 14 PROVIDE NEW 2P5AMP CIRCUIT BREAKER IN AVAILABLE SPACE FOR SERVICE TO AT&T METER. PROVIDE 3/12-GRD-3/4" CDT BETWEEN METER AND CIRCUIT BREAKER. PROVIDE UPDATED PANEL DIRECTORY PER N.E.C. TO READ "AT&T SUB-METER".
- 15 PROPOSE AT&T FLX21 CABINET MOUNTED ON EQUIPMENT RAILING AT TEMPORARY TOWER BASE.
- 16 PROPOSE AT&T NETSURE BATTERY CABINET MOUNTED ON EQUIPMENT RAILING AT TEMPORARY TOWER BASE.
- 17 PROPOSE AT&T NETSURE POWER CABINET MOUNTED ON EQUIPMENT RAILING AT TEMPORARY TOWER BASE.
- 18 PROPOSE AT&T DC50 CABINET MOUNTED ON TEMPORARY ICE BRIDGE POST.
- 19 EXTEND 2 SETS (444/Ø - 4" SEALTIGHT CONDUIT) FROM PROPOSED NETSURE BATTERY CABINET TO NETSURE 512 POWER CABINET.
- 20 PROVIDE 3/10"Ø/ANS - 2" CONDUIT FROM 100A BREAKER IN DG POWER PLANT TO FLX21 CABINET. MAKE ALL CONNECTIONS AS REQUIRED.
- 21 PROVIDE 6Ø/ANS-3Ø GRD IN 2" PVC CONDUIT BETWEEN PROPOSED INTERGRATED PANEL P AND NETSURE 512 POWER CABINET MOUNTED ON EQUIPMENT RAILING AT TEMPORARY TOWER BASE, FOR CONNECTION TO RECTIFIER SHELVES. COORDINATE EXACT ROUTING IN THE FIELD.
- 22 CONDUIT ROUTING IS DIAGNOMATIC, EXACT CONDUIT ROUTE SHALL BE COORDINATED WITH T-MOBILE REPRESENTATIVE IN THE FIELD.



1997 ANNAPOLIS PKWY, SUITE 200
ANNAPOLIS, MD 21401
PHONE: (410) 582-8043
FAX: (410) 220-2862

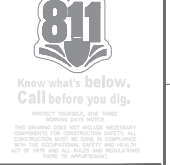
REVISION BLOCK

NO.	DESCRIPTION	DATE
2	COUNTY COMMENTS	07/20/2023
1	PERMIT DWGS	07/13/2023



I HEREBY CERTIFY THAT THESE DOCUMENTS WERE PREPARED OR APPROVED BY ME, TIMOTHY JOHN SMITH, AND THAT I AM A DULY LICENSED PROFESSIONAL ENGINEER UNDER THE LAWS OF THE STATE OF MARYLAND, LICENSE NO. 21809, EXPIRATION DATE, MAY 08, 2025.

DRAWN BY: BLN
DESIGNED BY: BLN/TJS
ORIGINAL DATE: 06/16/2023
TEI PROJECT#: 23014L
DESIGN SCALE: AS NOTED



SHEET TITLE
Power Plan and Electric Room Part Plan

SHEET NUMBER
E-2

