



♥ Empowering leaders
to serve with faith,
intellect, and confidence.

Stone Ridge School of the Sacred Heart

Campus Enhancement

April 22, 2014

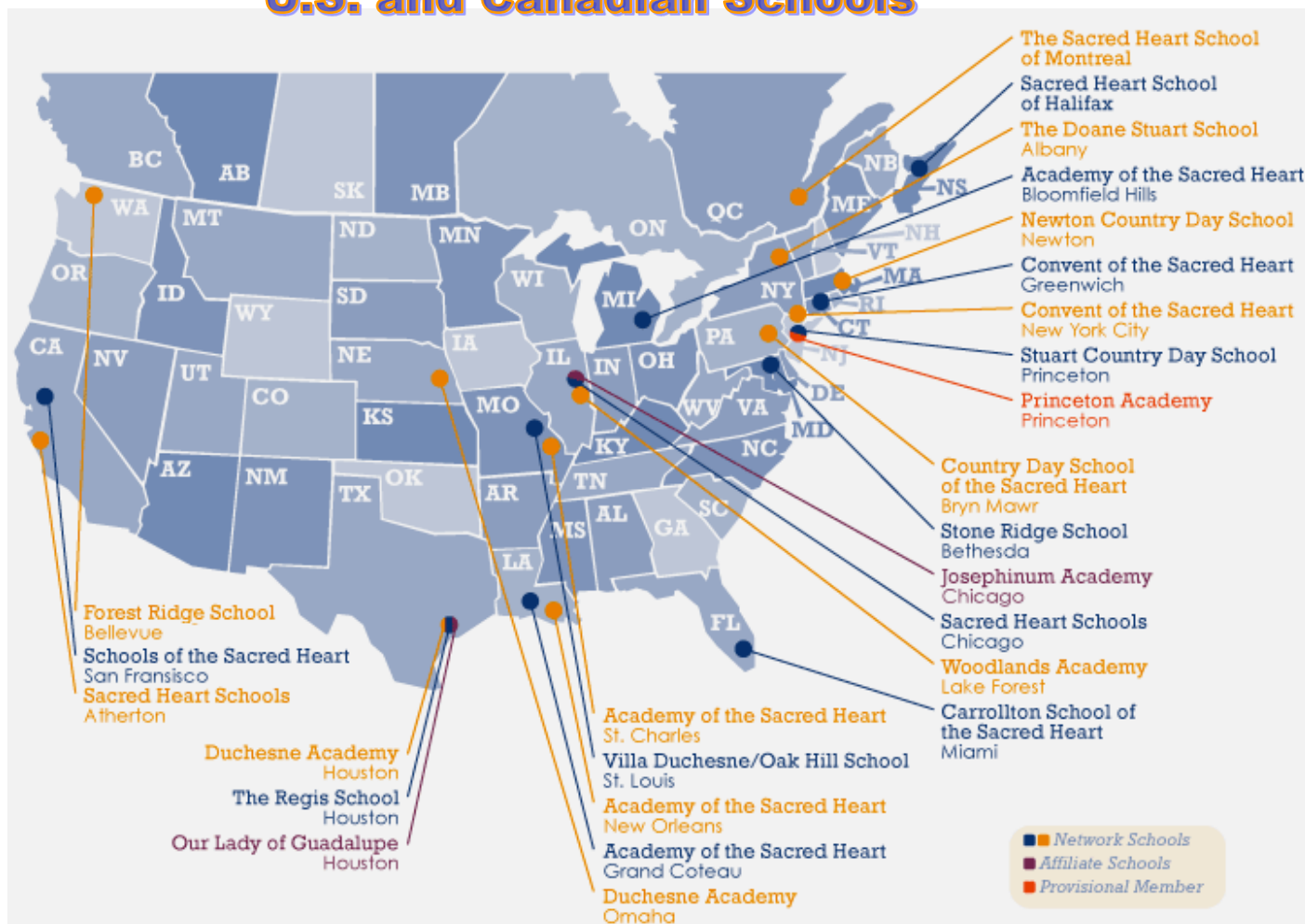


Sacred Heart Schools

Association of independent schools founded 200 years ago by St. Madeleine Sophie Barat, committed to the values of Catholic education.



U.S. and Canadian Schools







Stone Ridge Today and Tomorrow

- Stone Ridge's largest enrollment was 812 in 2001-02
- Currently 665 students
- Project enrollment of 700-740 students in next 5 years (returns Stone Ridge to 2006-07 size)
- No plans for enrollment to exceed 740 students

Areas of Transition

- **Leadership:** transitioning to lay leadership
- **Technology:** 21st century learning
- **Enrollment management:** new era for independent schools
- **Physical Space:** campus, facility updates

An aerial photograph of a school campus with various overlays and labels. Yellow lines delineate 'PROPOSED EASEMENT' areas, while orange lines indicate 'TEMPORARY CONSTRUCTION EASEMENT' zones. The campus includes a large central building, a parking lot, and two tennis courts. Surrounding roads are labeled: 'WISCONSIN AVE. MD. RTE. 335' on the left, 'CEDAR LANE' on the right, and 'Rte 335 ROUTE 335' at the bottom right. The image is used to illustrate the proposed and temporary construction easements for a project.

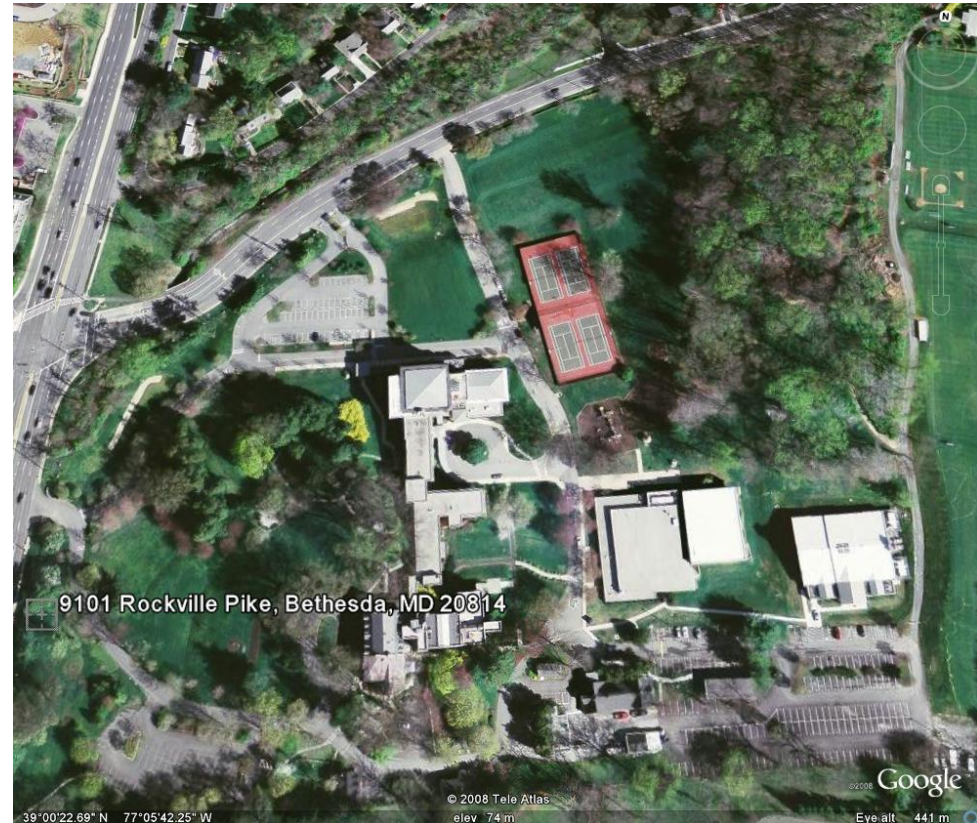


**STONE RIDGE SCHOOL
BRAC IMPROVEMENTS AERIAL EXHIBIT
7th ELECTION DISTRICT
MONTGOMERY COUNTY, MARYLAND**

DATE NOVEMBER 2012

Campus history

- **1949**—Academic building added to Hamilton House
- **1957-1974**—Five-day boarding school
- **1959**—New academic building
- **1996**—New Upper School building and gym
- **2005**—Natatorium



♥ Empowering leaders
to serve with faith,
intellect, and confidence.





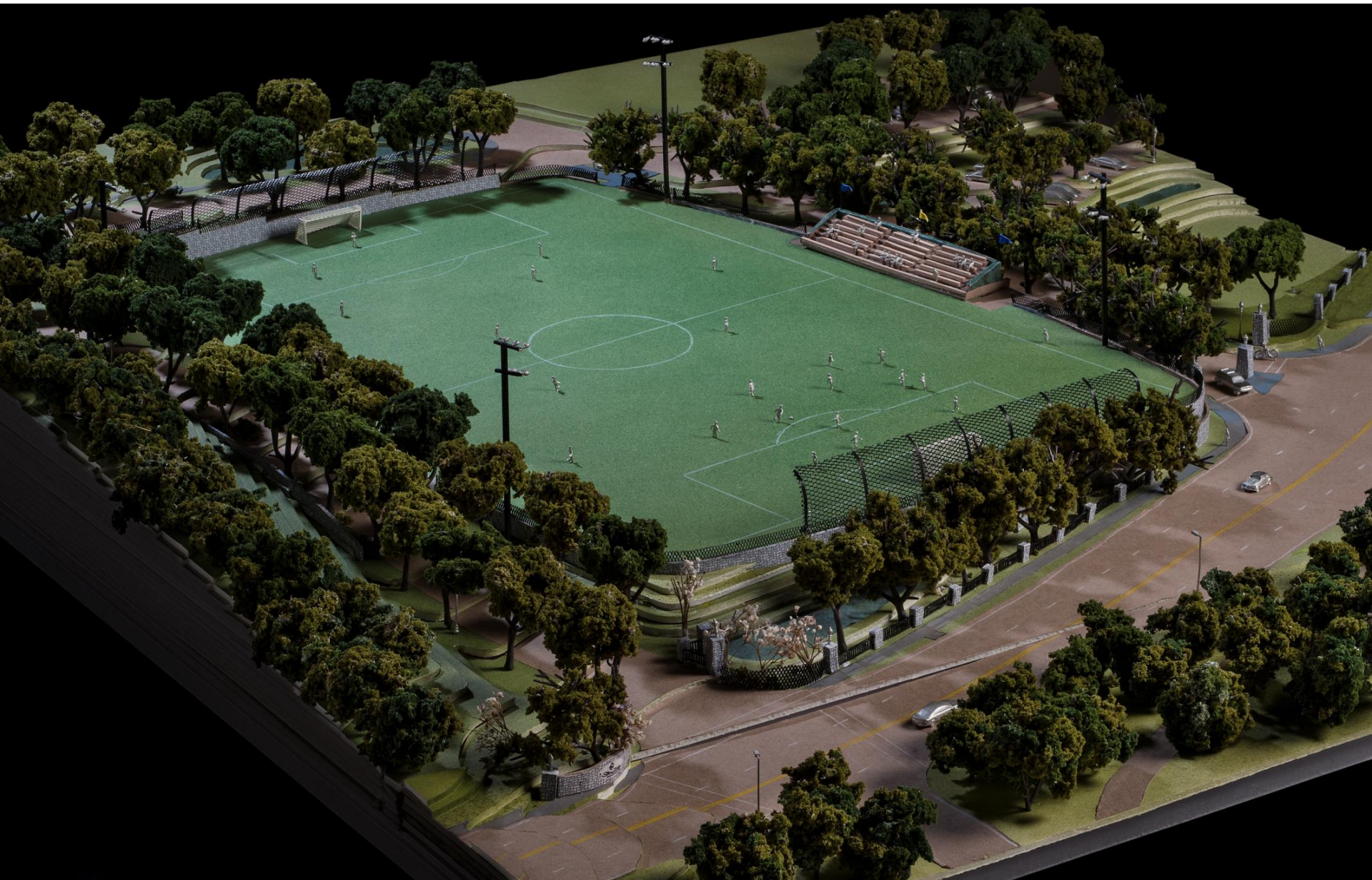


Gators Go
TURF

Stone Ridge
Campus Enhancement **2014**







M
IDGE GIRL.
FAN.
US WHIZ.
CLASSMATE.
D.



SR

ABOUT

ADMISSIONS

ACADEMICS

ARTS

ATHLETICS

CAMPUS LIFE

SACRED HEART

Gators Go TUFF

Stone Ridge
Campus Enhancement **2014**



Project Overview

Goal: To provide a first-rate playing field for our soccer, field hockey, and lacrosse programs, to serve the physical education program of all our student athletes, and to improve the flow of traffic on and off campus by building strategically laid out roadways, and parking areas.

**Gators Go
TURF**
Stone Ridge
Campus Enhancement **2014**



FAQs

- ▶ What is the goal of School of the Stone Ridge's campus expansion project?
- ▶ How will this project impact the environment of the campus and surrounding areas?
- ▶ What is happening on Cedar Lane and Rockville Pike?
- ▶ What does the construction on Stone Ridge's interior roadways and campus entrances entail?
- ▶ Why does Stone Ridge need a new field?
- ▶ Are turf fields safe for young athletes?
- ▶ Will the turf field be very hot in the summer?
- ▶ How will athletic programs and physical education classes be affected during construction?
- ▶ How will Stone Ridge pay for this project?
- ▶ Why does the School need a separate fundraising campaign for this project?
- ▶ How does this project fit into the larger Campus Master Plan?

Schedule

Design

December 2013 - April 2014

Construction

May 2014 - December 2014

Field delivery
New Entrance Road

December 2014
August 2014

Questions?