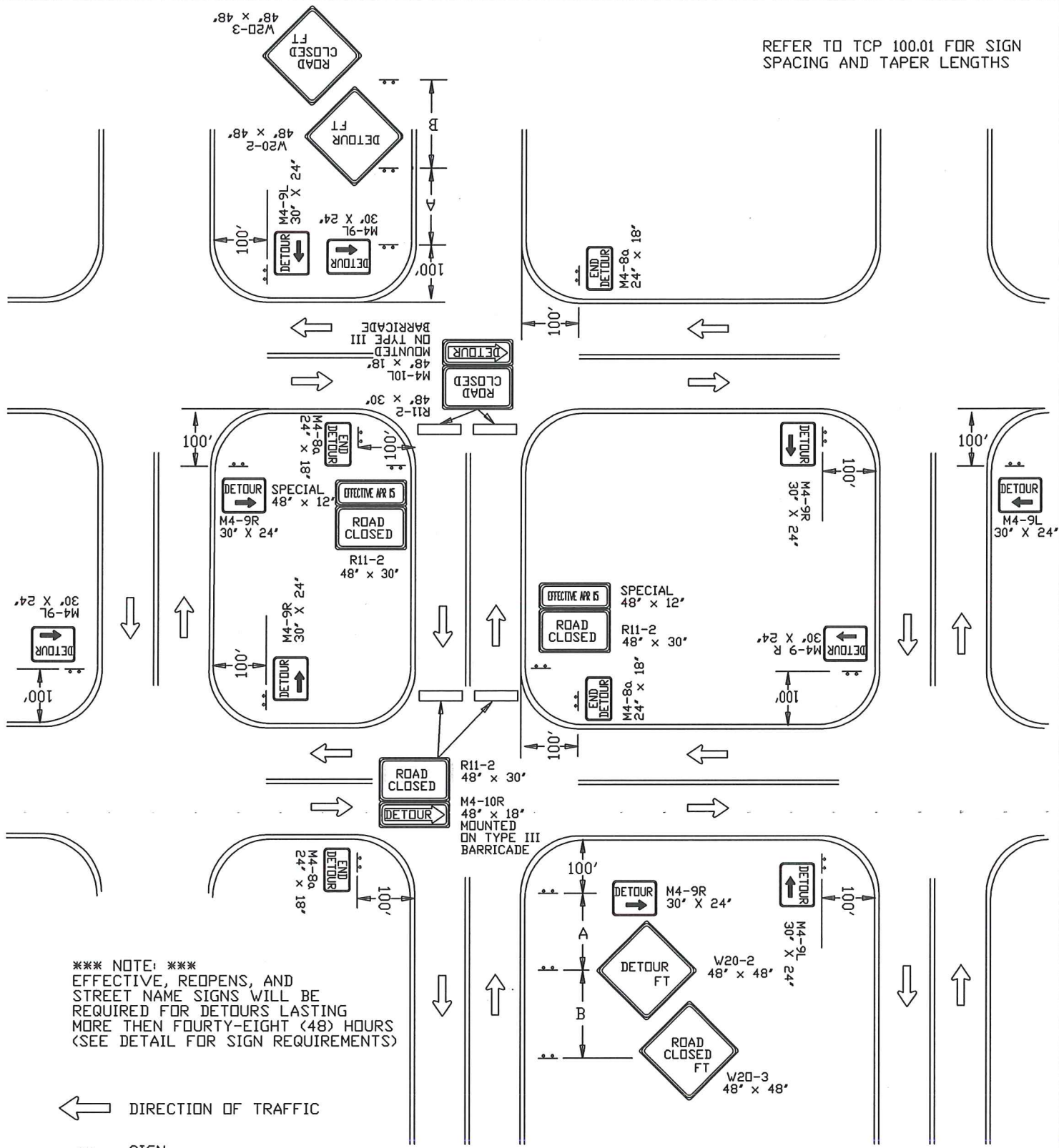


REFER TO TCP 100.01 FOR SIGN SPACING AND TAPER LENGTHS



*** NOTE: ***
EFFECTIVE, REOPENS, AND STREET NAME SIGNS WILL BE REQUIRED FOR DETOURS LASTING MORE THEN FOURTY-EIGHT (48) HOURS (SEE DETAIL FOR SIGN REQUIREMENTS)

← DIRECTION OF TRAFFIC

••• SIGN

▨ WORK SITE

▬ TYPE III BARRICADE

○ TRAFFIC DRUMS OR CONES

S¹ = 30 FT.

S² = 10 FT.

REVISION BY	DATE	APPROVED

DATE	07-01-10	TRAFFIC OPERATIONS SECTION MONTGOMERY COUNTY, MARYLAND
DES. BY	MCDPWT	
DRAWN BY	TCLE	TRAFFIC CONTROL FOR TEMPORARY DETOUR
SCALE	APPROVED	_____
NTS	STANDARD TCP-110.02	CHIEF, TRAFFIC OPERATIONS SECTION
		_____ OF _____ SHEETS