



Watts Branch

Watts Branch originates in the City of Rockville, to the south and east of the intersection of I-270 and Shady Grove Road. The stream flows southwest for approximately 11 miles, and merges with Piney Branch before entering the Potomac River. The headwater areas are highly developed and contain commercial, high density residential, and research and development centers. The upper portion of Watts Branch has been impacted by runoff from the high impervious areas, and the majority of the stream channels are over widened and entrenched, causing impacts to instream habitat. The lower portions of the subwatershed are predominately lower density residential and still support a diverse fish population. The upper and western portions of Piney Branch and Lower Sandy Branch, major tributaries, contain high quality, cool water streams and are important in maintaining water quality further downstream in the mainstem. In 1995, the Piney Branch tributary was designated as a Special Protection Area (SPA) in recognition of the need to preserve this sensitive resource as its headwaters were developed. Projects proposed within the SPA are required to go through a special permitting process, to apply stricter stormwater design standards, conduct construction and post-construction monitoring of stormwater facilities, and pay fees to support instream monitoring and annual reporting.

Given the long history of study in this watershed, there is an ongoing effort to address water quality problems through additional runoff control, restoration of stream habitat, and improved stormwater management strategies. In 2006, a comprehensive watershed restoration plan was developed for Watts Branch targeting 14 priority subwatersheds. The County has also identified a number of stormwater retrofits to treat almost 100 acres of impervious cover.

The County is developing a detailed implementation plan for the Watts Branch watershed to meet stormwater permit requirements and watershed restoration goals. This overview profile contains a series of maps and tables that provide basic watershed information to support a general understanding of existing watershed features, conditions, and restoration opportunities.

Table 1: Watershed Profile

	Acres	Percent of Watershed
Watershed Drainage Area	14,175	100%
Impervious Cover	2,327	16%
Stream miles	82	
Watershed Area Subject to County Permit¹	9,036	64%
Impervious Cover Subject to County Permit¹	1,116	12%
Forest Cover¹	1,850	20%
Pervious Cover (e.g., turf, meadow, farm fields)¹	6,070	67%

¹ Excluded areas include Rockville, Gaithersburg, rural zoning, all MNCPPC lands, Federal and State property, and Federal and State roads



Description of Map 1: Watts Branch Watershed Existing Conditions

This map includes the following information based on the County Geographic Information System database:

- Pervious cover- Forest, turf, meadow, and farm fields
- Impervious cover
- Rivers and streams
- Existing Best Management Practices (BMPs) providing water quality treatment to the maximum extent practicable (MEP) and completed stream restoration sites
- Table of impervious surface and the existing level of control for the County's stormwater permit

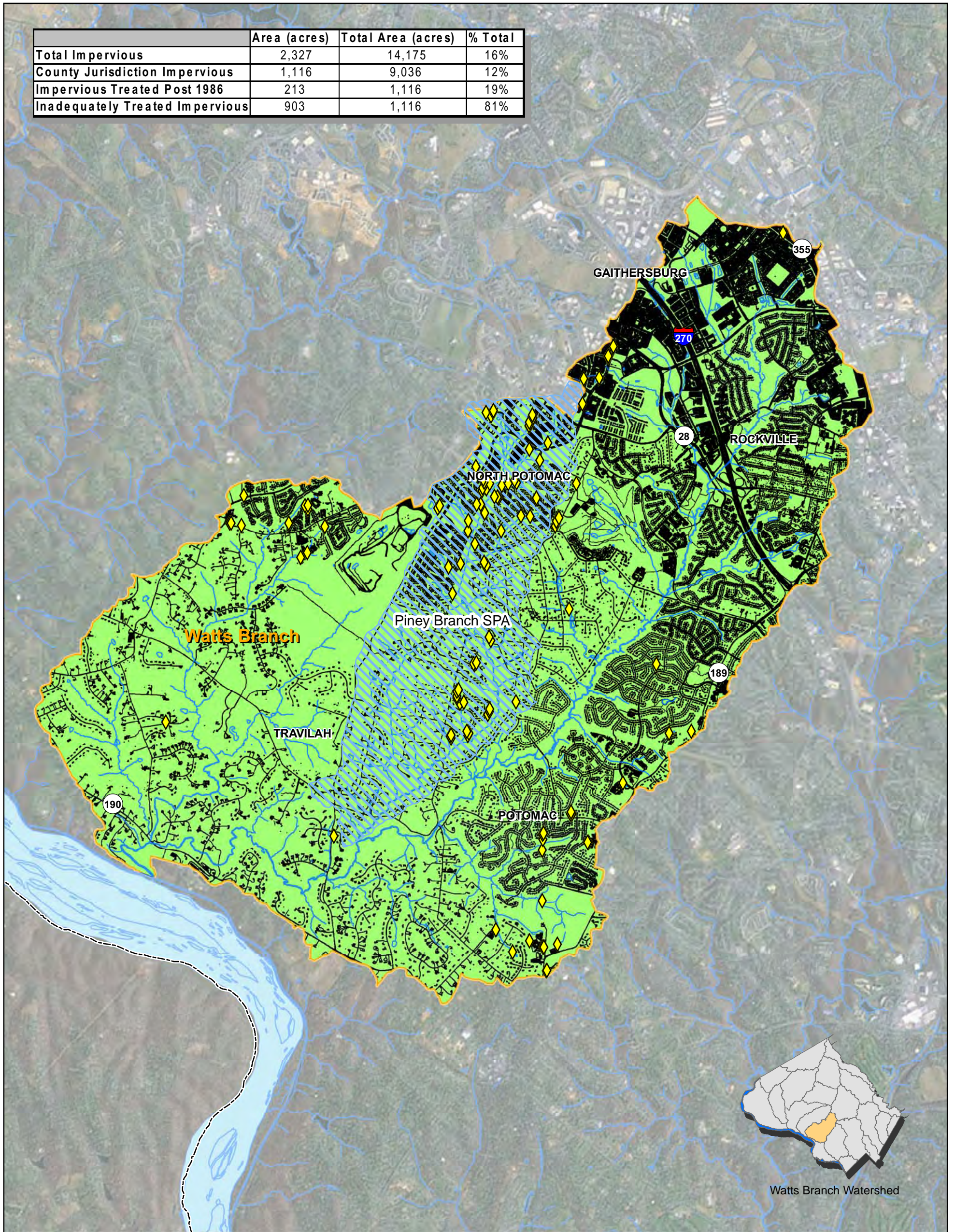
Description of Map 2: Watts Branch Watershed Potential Restoration Opportunities

This map includes the location of the following potential restoration opportunities, compiled from previous watershed restoration studies, reviewed for inclusion in the County's Capital Improvement Program fiscal years 2011-2016, and potential future projects:

- Retrofits of existing stormwater management practices
- New proposed stormwater ponds or wetlands
- Potential Low Impact Development (LID) opportunities
- Stream restoration candidate sites
- Summary table of the total number of potential sites

MAP 1. WATTS BRANCH WATERSHED EXISTING CONDITIONS

	Area (acres)	Total Area (acres)	% Total
Total Impervious	2,327	14,175	16%
County Jurisdiction Impervious	1,116	9,036	12%
Impervious Treated Post 1986	213	1,116	19%
Inadequately Treated Impervious	903	1,116	81%

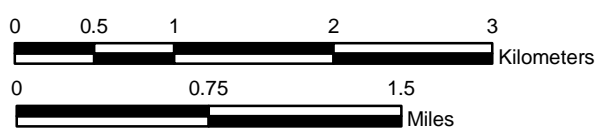
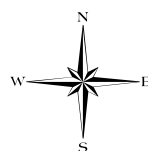


Legend

- Existing Well Performing Best Management Practices (120 sites)*
- Completed Stream Restoration Sites (0 sites)*
- Special Protection Areas
- Streams
- Watts Branch Watershed Boundary
- Pervious Cover (forest, turf, meadow, farm fields)
- Impervious Cover
- Montgomery County Boundary

DRAFT

FEBRUARY 2010



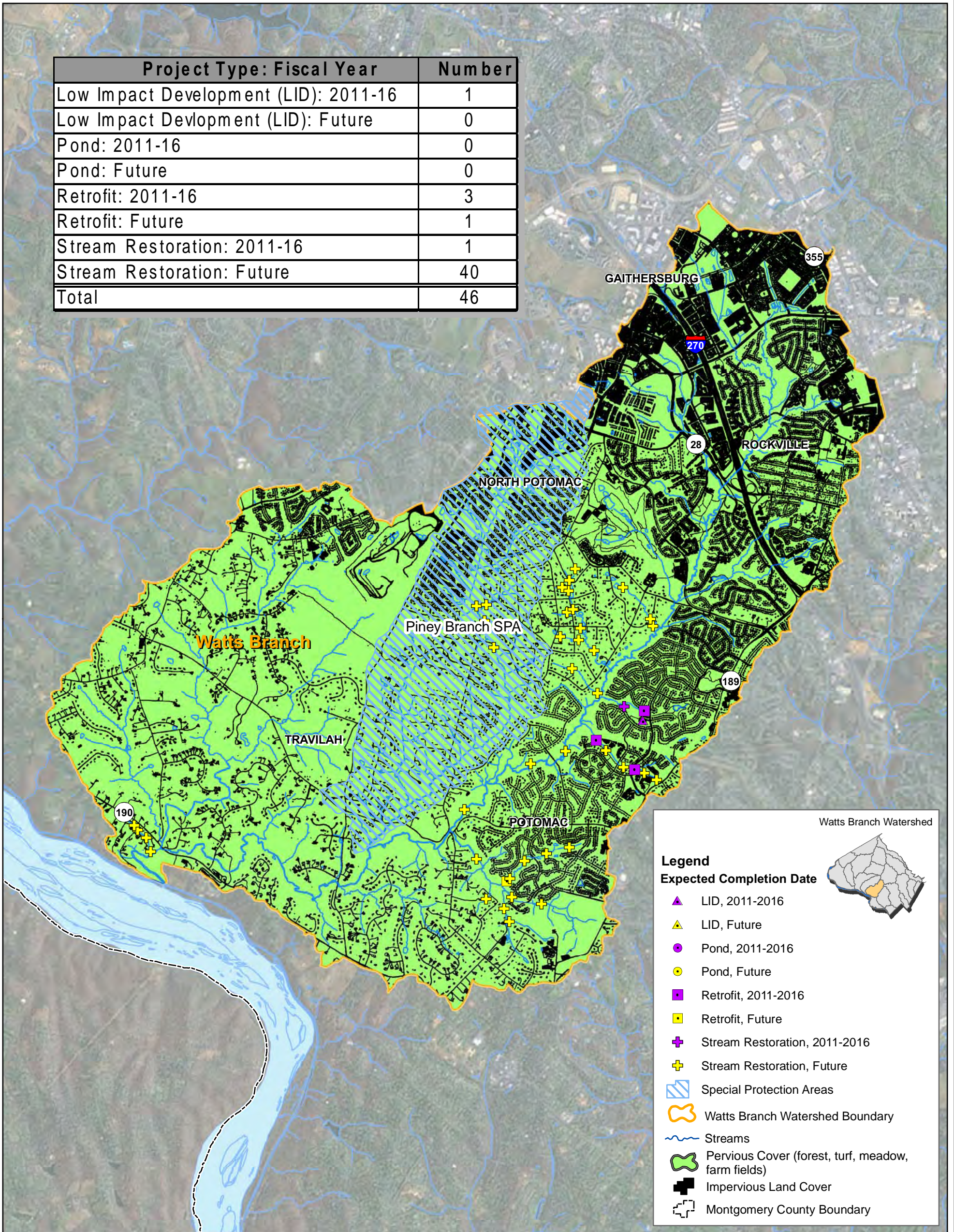
Location



*Excludes other municipalities, all MNCPPC lands, rural areas, Federal and State property, and Federal and State Roads

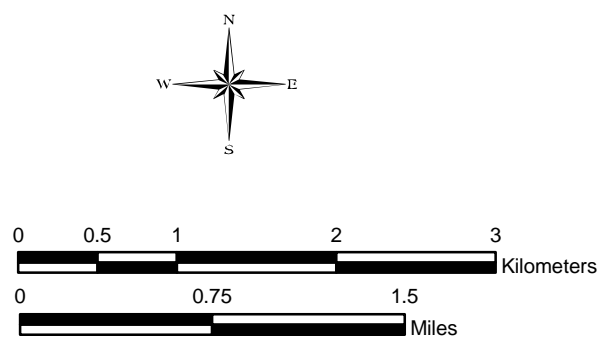
MAP 2. WATTS BRANCH WATERSHED RESTORATION OPPORTUNITIES*

Project Type: Fiscal Year	Number
Low Impact Development (LID): 2011-16	1
Low Impact Development (LID): Future	0
Pond: 2011-16	0
Pond: Future	0
Retrofit: 2011-16	3
Retrofit: Future	1
Stream Restoration: 2011-16	1
Stream Restoration: Future	40
Total	46



DRAFT

FEBRUARY 2010



Location



*Excludes other municipalities, all MNCPPC lands, rural areas, Federal and State property, and Federal and State Roads