

---

## **Results Area: A Strong and Vibrant Economy**

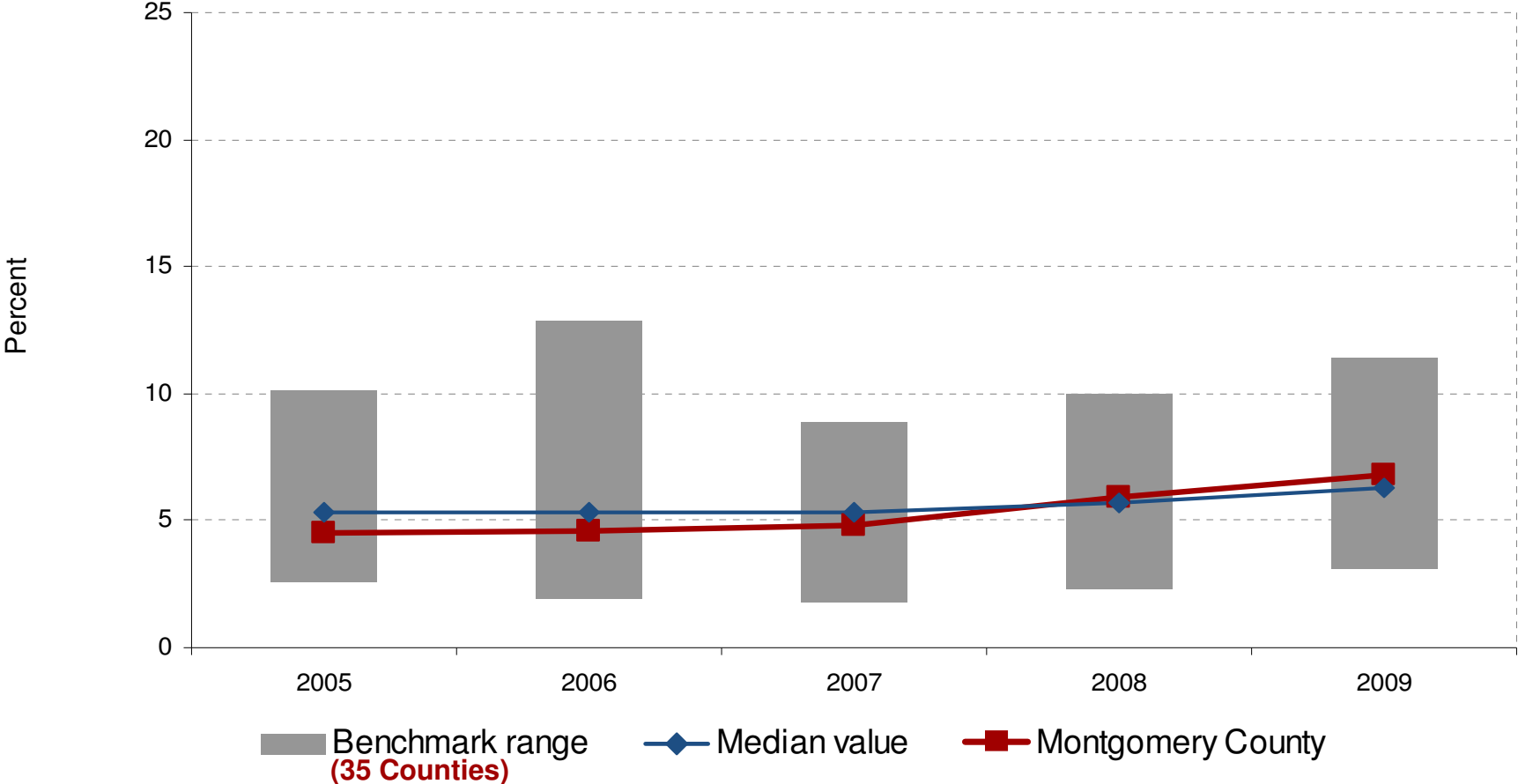
A strong and vibrant economy is the foundation of a healthy and successful community. Montgomery County is blessed with a diverse network of established and emerging for-profit businesses and not-for-profit organizations that is the envy of other local communities. The key to our success has been our highly educated workforce attracted by our exceptional quality of life. The Leggett Administration is committed to doing what is necessary to build on this strong foundation by reaching out to attract entrepreneurial companies from across America and throughout the world. To ensure a positive business climate, the Leggett Administration will work to streamline regulation and build lines of communication with leaders of the business and independent sectors so that they are at the table with government when key decisions about the County's future are made. To continue to attract and retain quality businesses, Montgomery County's priorities must be to provide educational excellence, workforce development opportunities, a transportation network that works, and housing options that meet the needs of future employees.

**Statement on A Strong and Vibrant Economy from the Leggett Transition Team Report (December 2006)**



**A Strong and Vibrant Economy**

**Indicator: Percent below poverty line**



**In 2009, the median national value was 6.3%. In Montgomery County, 6.8% were below the poverty line. In 2009, the highest value was 11.4% and the lowest value was 3.1%.**

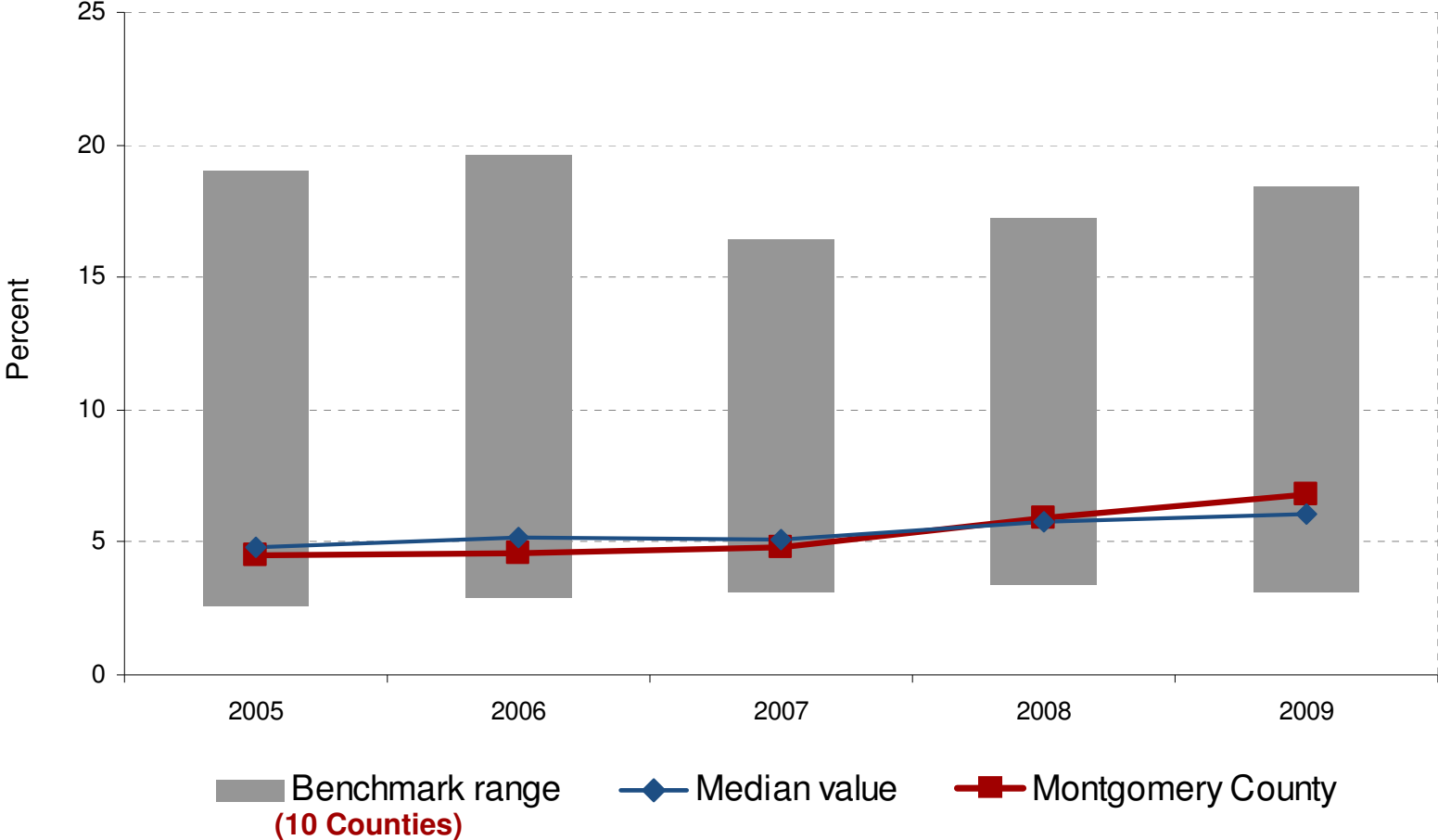


Source: American Community Survey



**A Strong and Vibrant Economy**

**Indicator: Percent below poverty line**



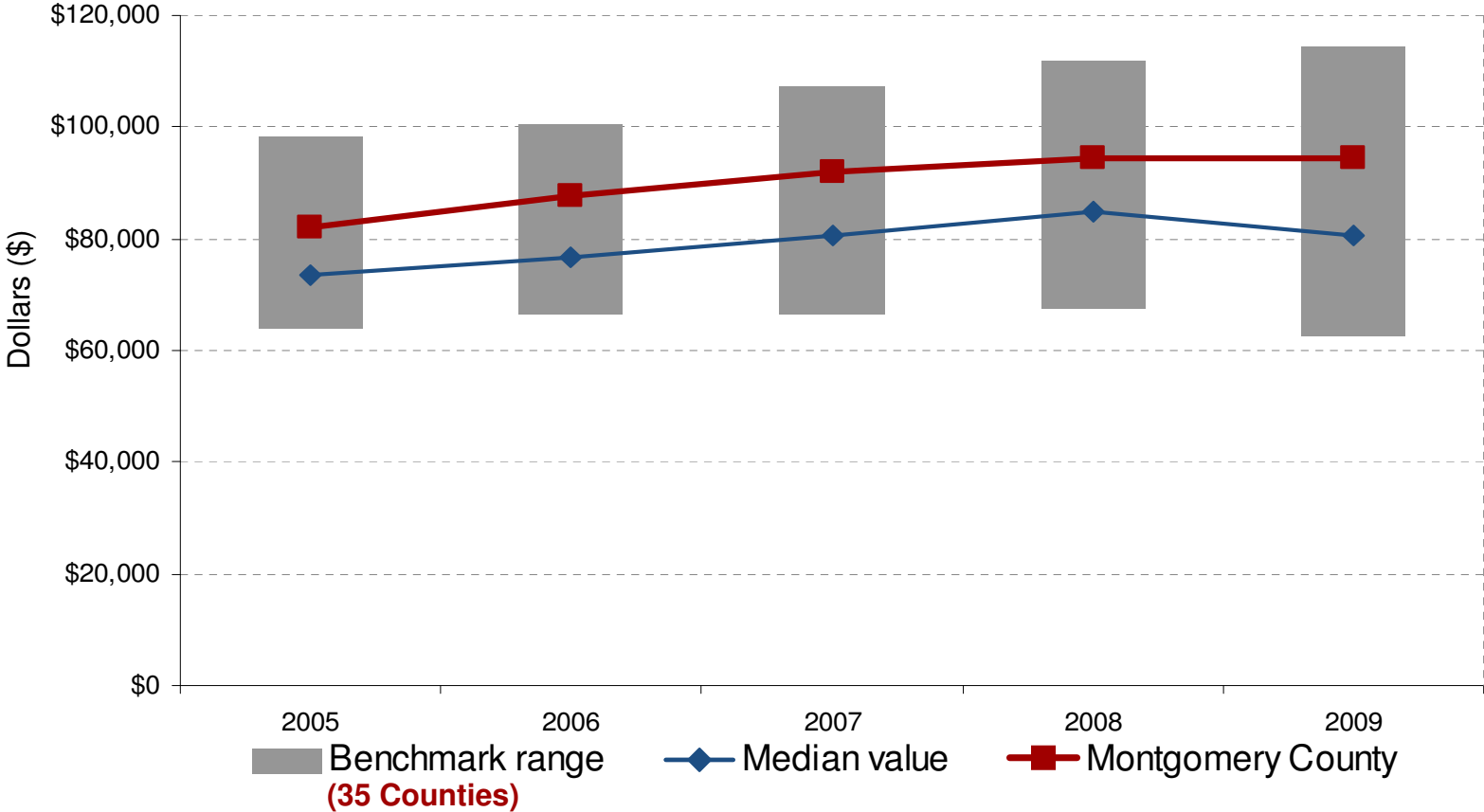
**In 2009, the median regional value was 6.1%. In Montgomery County, 6.8% were below the poverty line. In 2009, the highest value was 18.4% and the lowest value was 3.1%.**



Source: American Community Survey



**A Strong and Vibrant Economy**  
**Indicator: Median household income**



**In 2009, the median national value was \$80,623. In Montgomery County median household income was \$94,420. In 2009, the highest value was \$114,204 and the lowest value was \$62,308.**

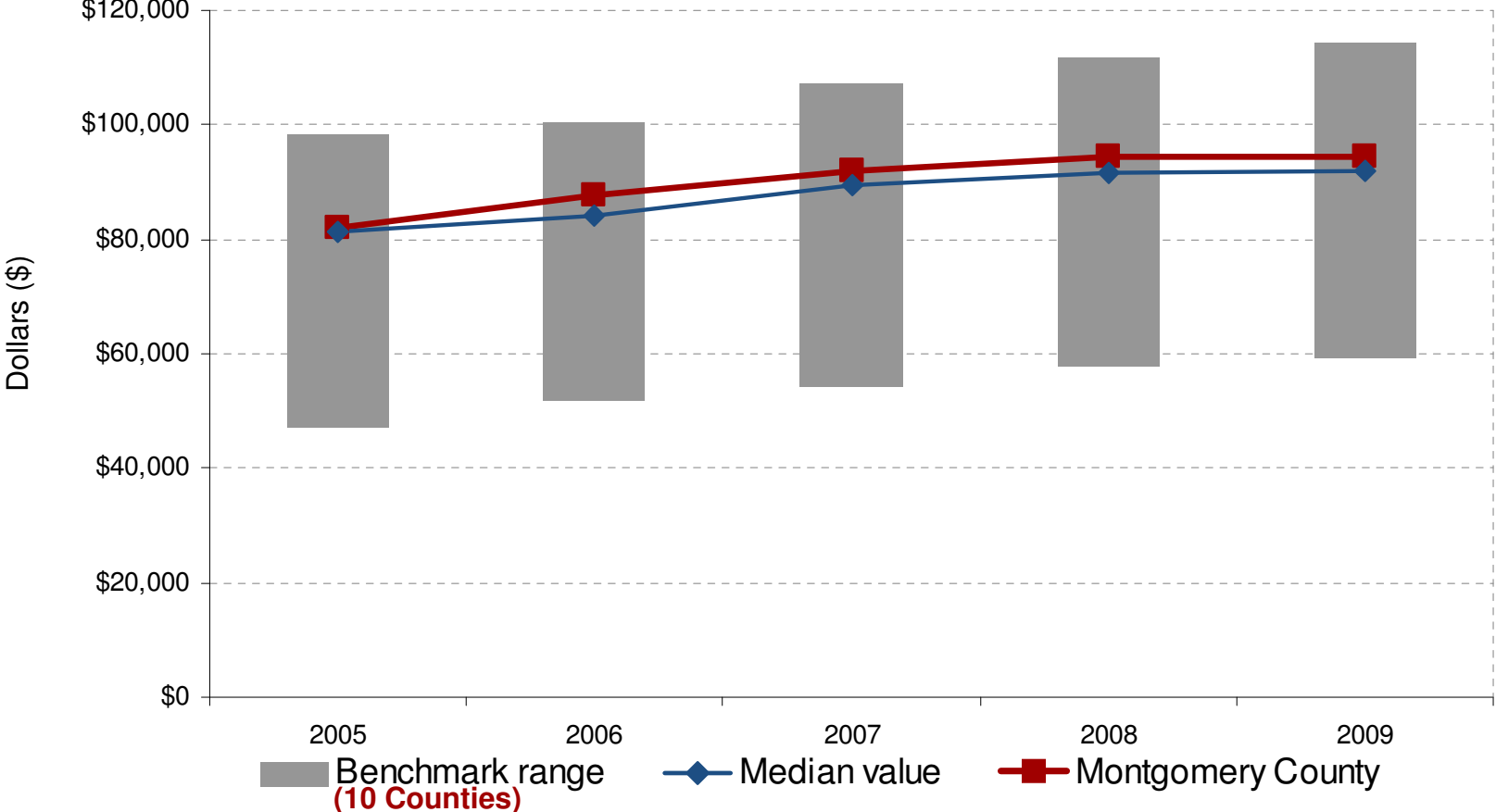


Source: American Community Survey



**A Strong and Vibrant Economy**

**Indicator: Median household income**



**In 2009, the median regional value was \$92,103. In Montgomery County median household income was \$94,420. In 2009, the highest value was \$114,204 and the lowest value was \$59,290.**

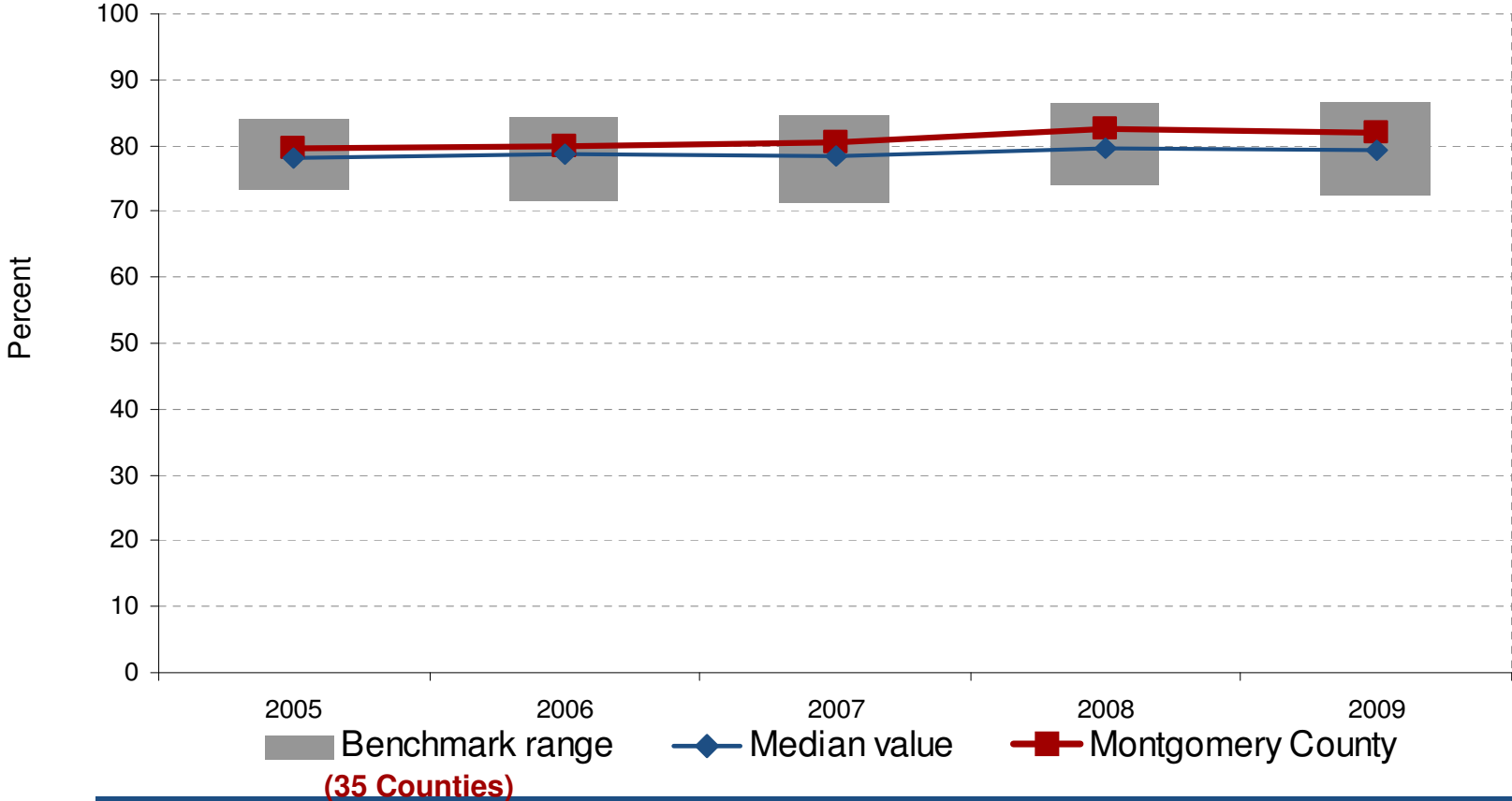


Source: American Community Survey



**A Strong and Vibrant Economy**

**Indicator: Percent of population 16-64 in labor force**



**In 2009, the median national value was 79.3 %. In Montgomery County, 81.9% of the population 16-64 was in the labor force. In 2009, the highest value was 86.6% and the lowest value was 72.6%.**

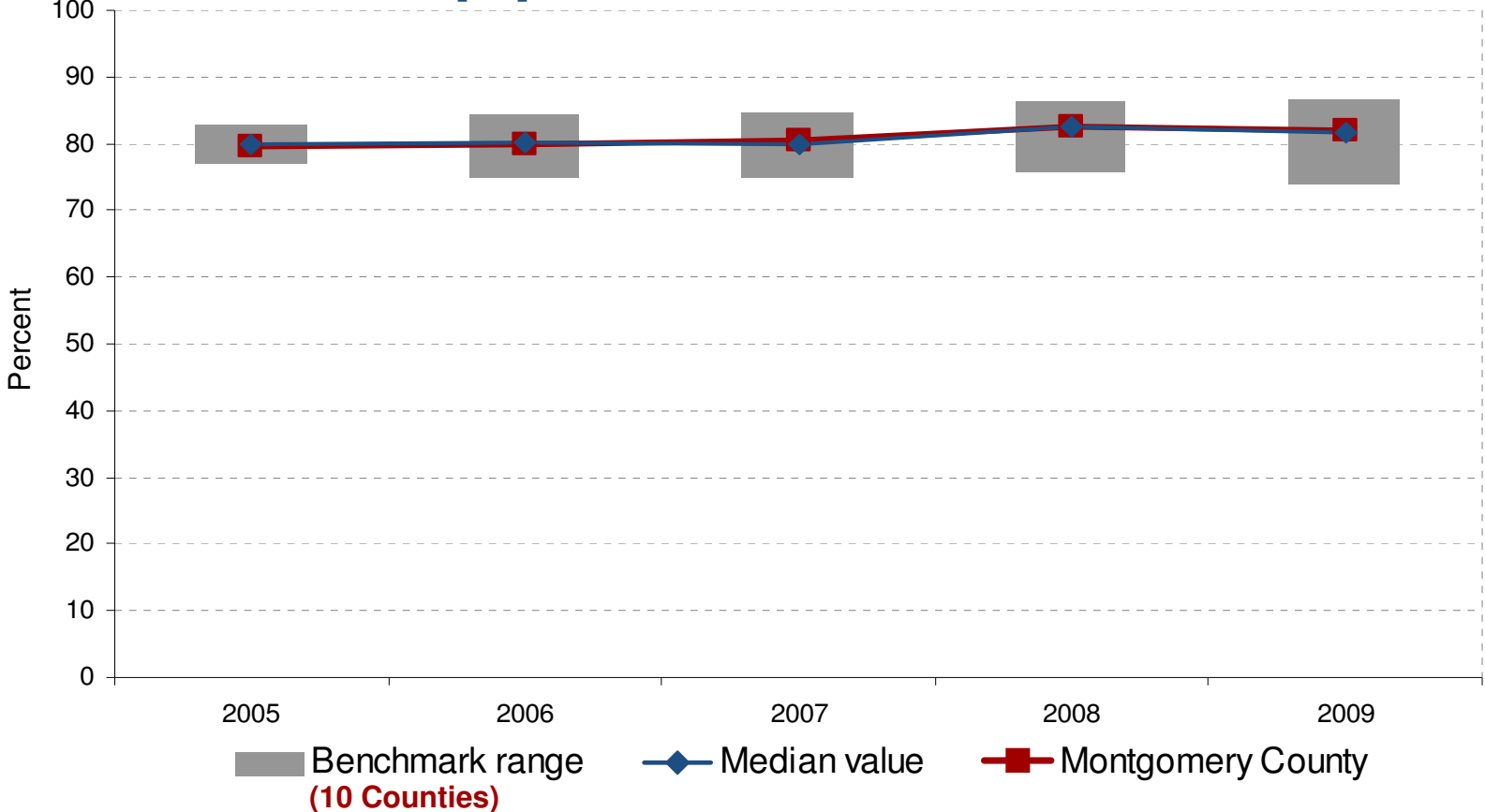


Source: American Community Survey



**A Strong and Vibrant Economy**

**Indicator: Percent of population 16-64 in labor force**



**In 2009, the median regional value was 81.7%. In Montgomery County, 81.9% of the population 16-64 was in the labor force. In 2009, the highest value was 86.6% and the lowest value was 74%.**

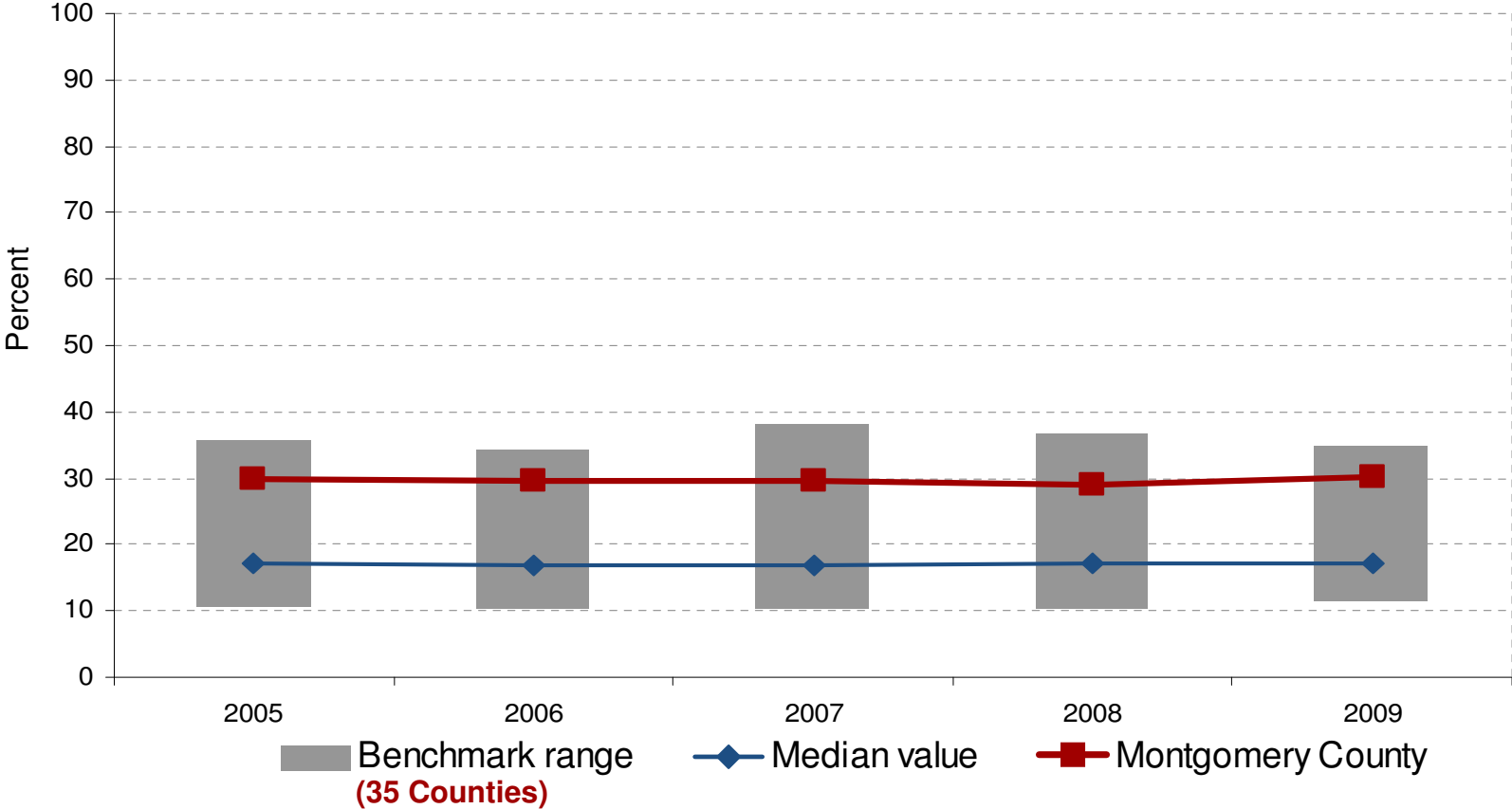


Source: American Community Survey



**A Strong and Vibrant Economy**

**Indicator: Percent of population 25 years and over with an advanced degree**



**In 2009, the median national value was 17.3%. In Montgomery County, 30.1% of those 25 years and older had an advanced degree. In 2009, the highest value was 34.9% and the lowest value was 11.6%.**

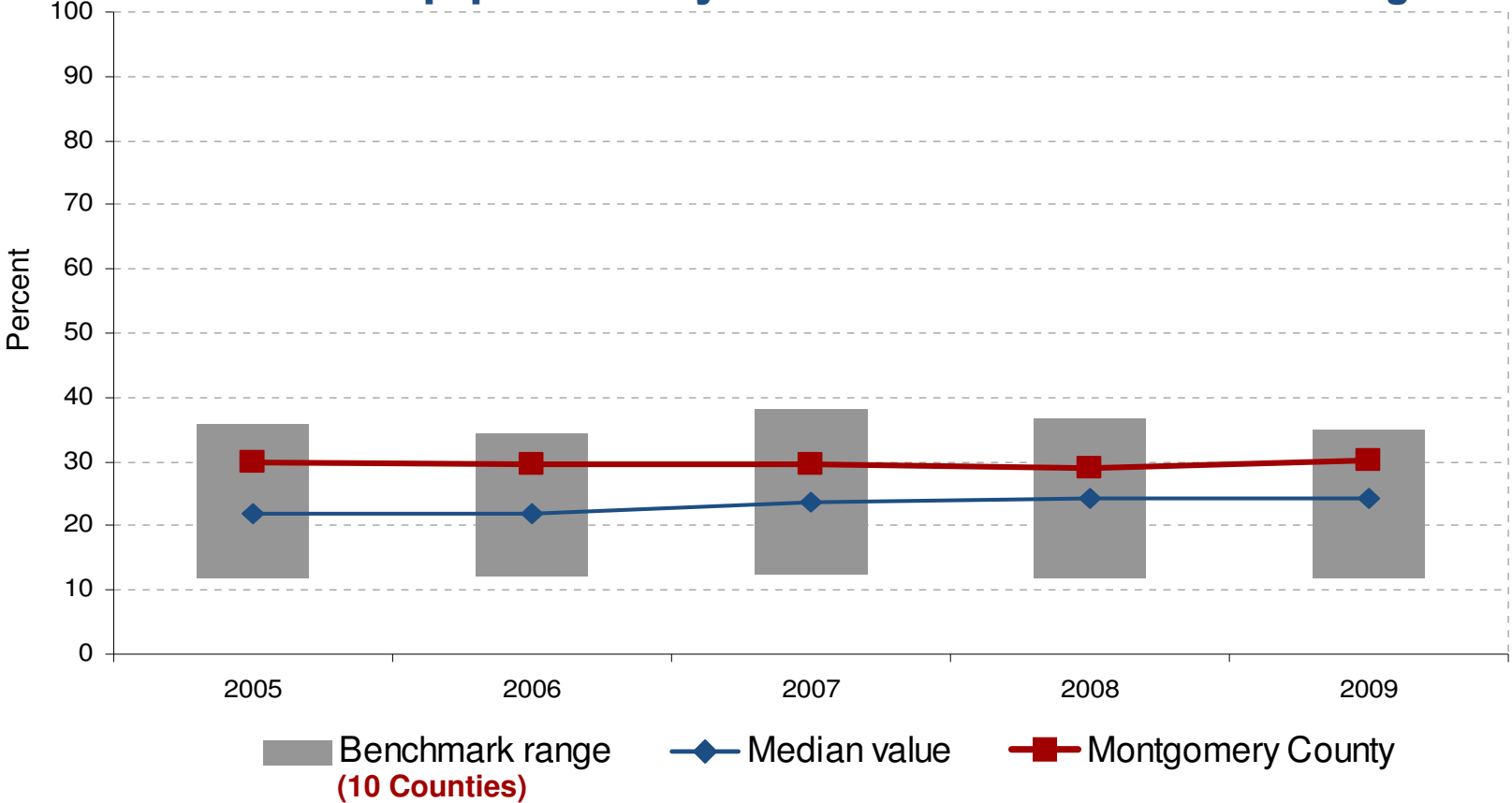


Source: American Community Survey



**A Strong and Vibrant Economy**

**Indicator: Percent of population 25 years and over with an advanced degree**



**In 2009, the median regional value was 24.3%. In Montgomery County, 30.1% of those 25 years and older had an advanced degree. In 2009, the highest value was 34.9% and the lowest value was 11.8%.**

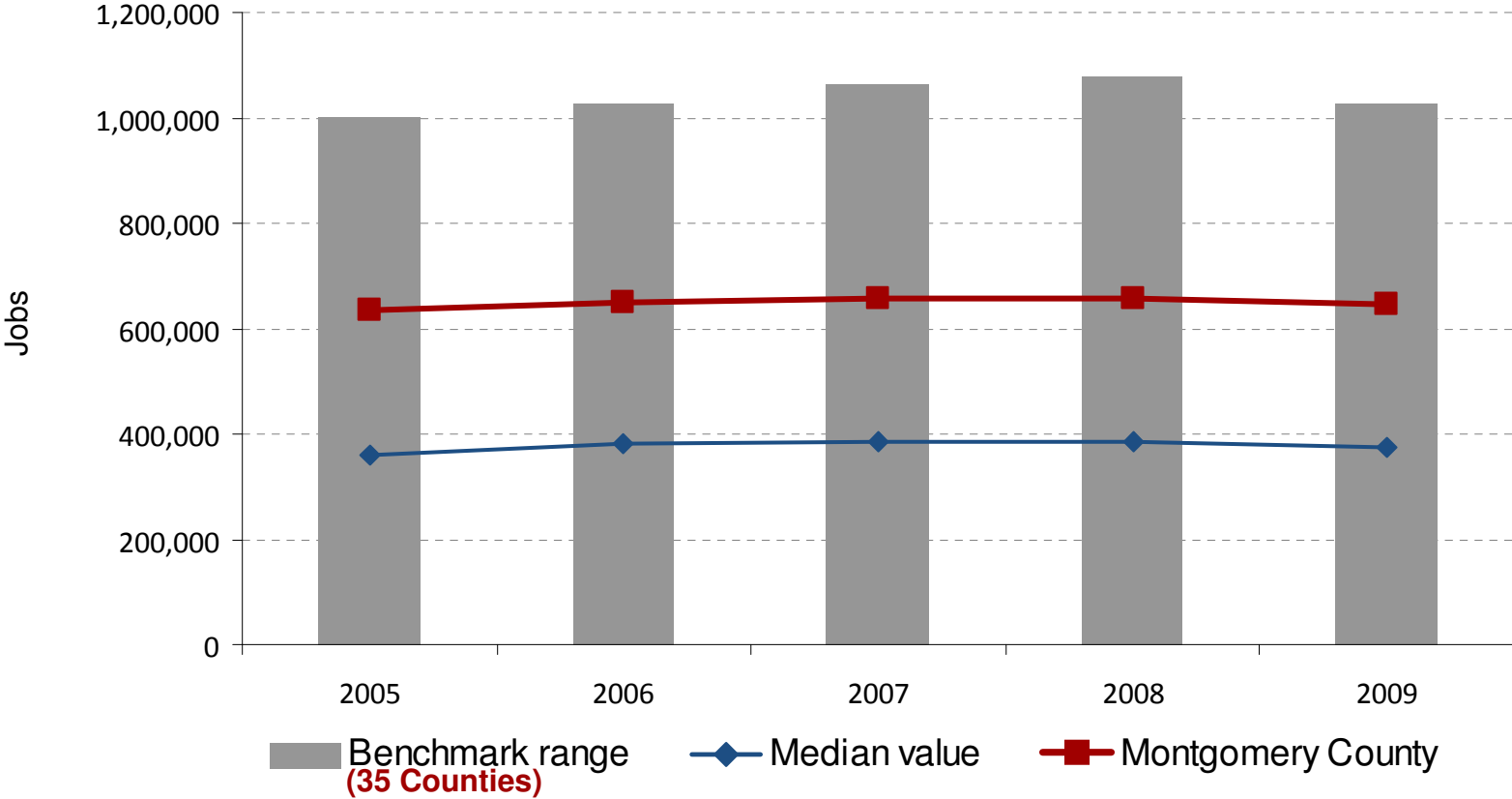


Source: American Community Survey



**A Strong and Vibrant Economy**

**Indicator: Total employment (Number of jobs)**



**In 2009, the median national value was 375,193. In Montgomery County, total employment (number of jobs) was 645,201. In 2009, the highest value was 1,119,759 and the lowest value was 93,322.**

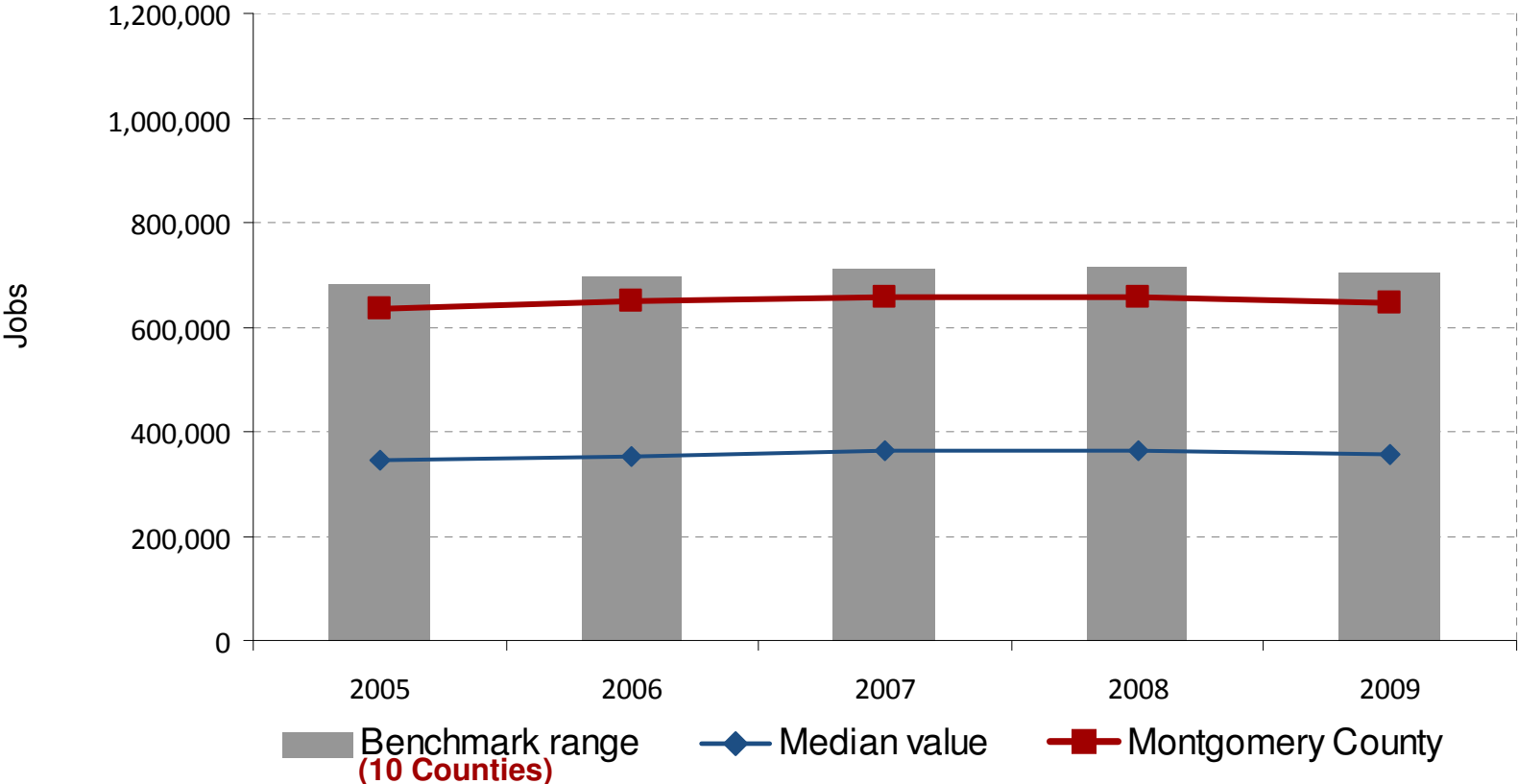


Source: Bureau of Economic Analysis; New estimates for 2009 and revisions for 2008-2009 based on April, 2011 data release



**A Strong and Vibrant Economy**

**Indicator: Total employment (Number of jobs)**



**In 2009, the median regional value was 357,027. In Montgomery County, total employment (number of jobs) was 645,201. In 2009, the highest value was 833,272 and the lowest value was 127,289.**



Source: Bureau of Economic Analysis; New estimates for 2009 and revisions for 2008-2009 based on April, 2011 data release

