
Results Area: An Efficient and Effective Transportation Network

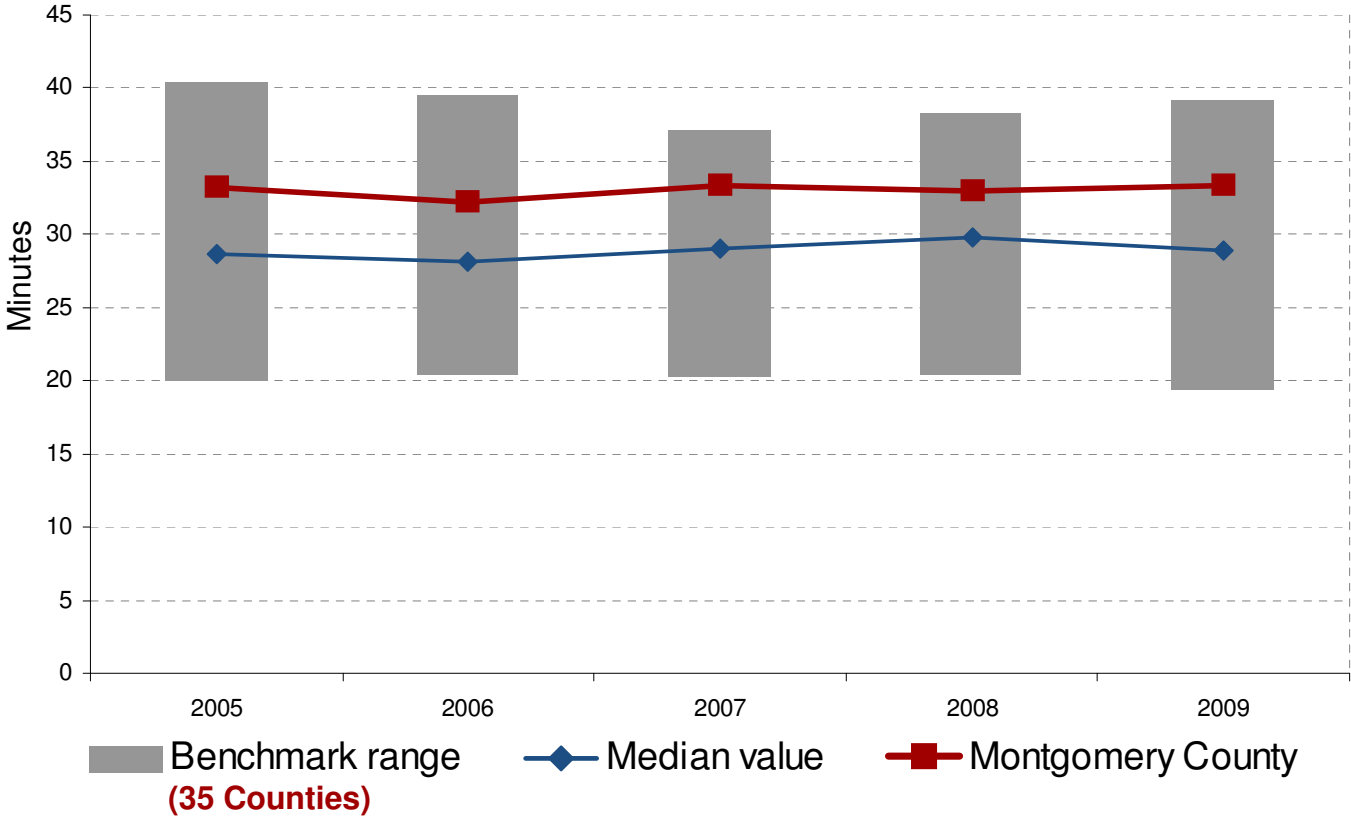
Traffic gridlock is the number one concern of many of our residents and businesses. It is a threat to the economic competitiveness of our businesses. It robs families of essential time together and pollutes the air we breathe. New roads and transit are important solutions, but they often require many years to implement. As we work on long-range strategies, the Leggett Administration is also committed to immediate action on a wide range of useful and practical actions that can reduce gridlock now. These solutions will require great creativity, regional collaboration, and the shared actions of residents, governments, and businesses.

Statement on An Efficient and Effective Transportation Network from the Leggett Transition Team Report (December 2006)



An Effective and Efficient Transportation Network

Indicator: Mean Travel Time to Work (Commute Time)



In 2009, the median value was 28.9 minutes. In Montgomery County, mean travel time to work was 33.4 minutes. In 2009, the highest value was 39.2 and the lowest value was 19.4.

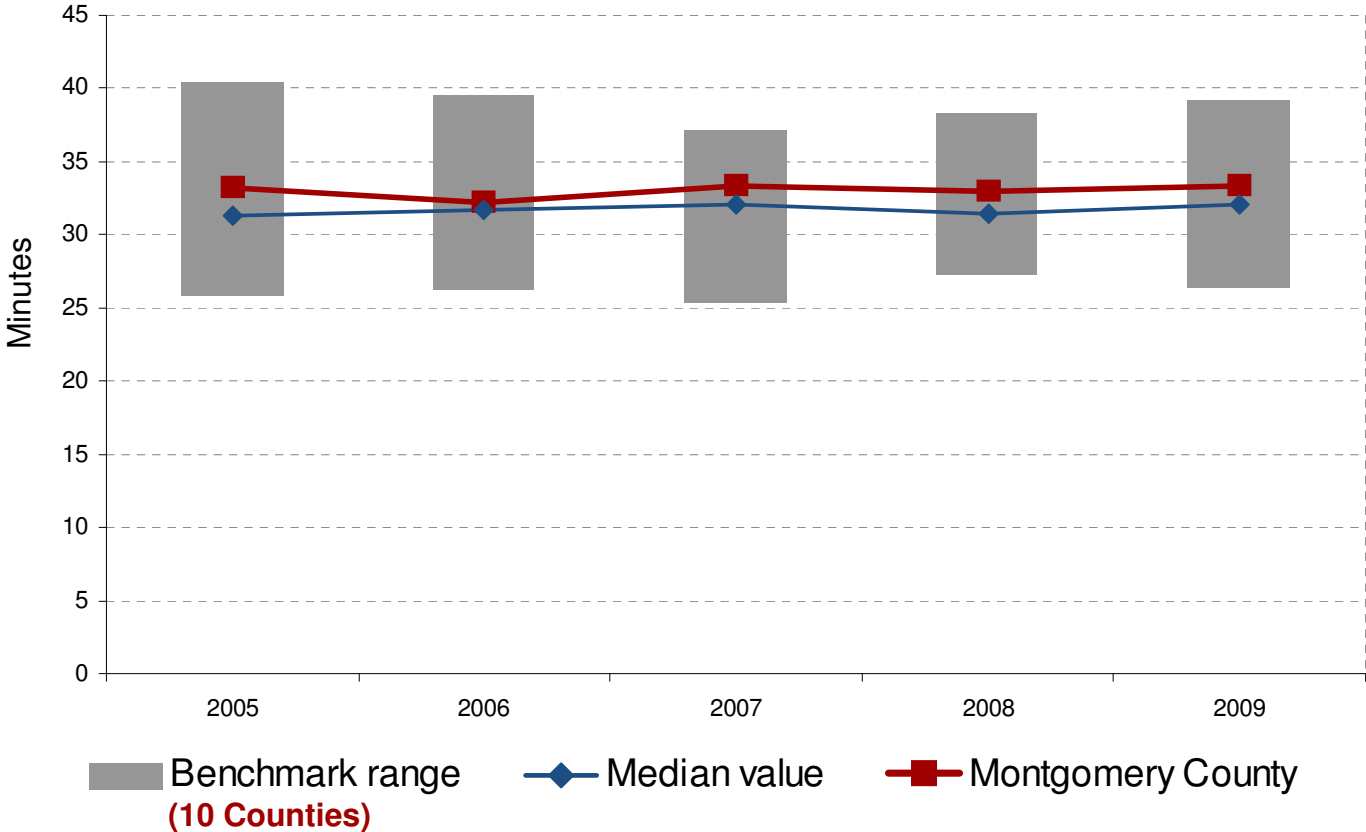


Source: U.S. Census Bureau, American Community Survey



An Effective and Efficient Transportation Network

Indicator: Mean Travel Time to Work (Commute Time)



In 2009, the median value was 32.1 minutes. In Montgomery County, mean travel time to work was 33.4 minutes. In 2009, the highest value was 39.2 and the lowest value was 26.4.

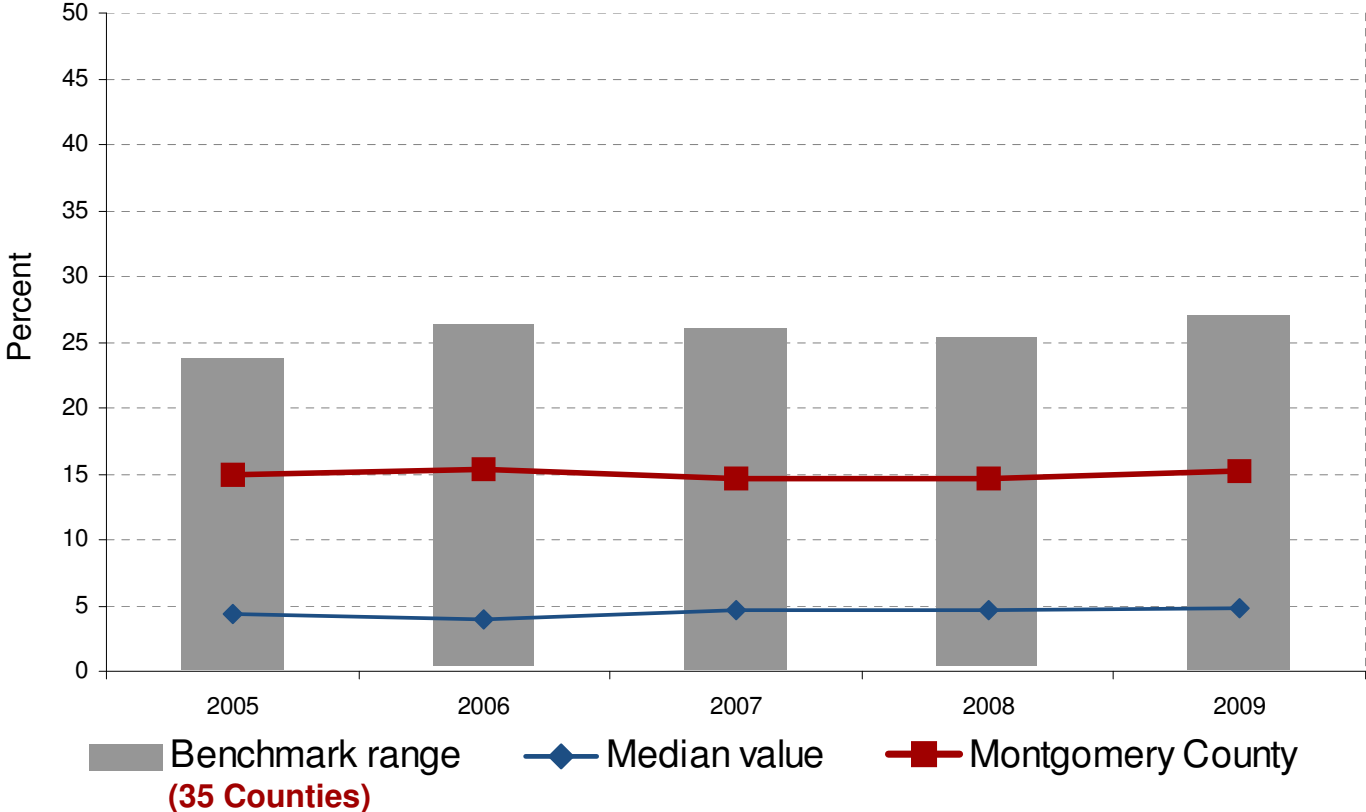


Source: U.S. Census Bureau, American Community Survey



An Effective and Efficient Transportation Network

Indicator: Percent of People Taking Public Transportation to Work



In 2009, the median value was 4.8 percent. In Montgomery County, 15.2% residents took public transportation to work. In 2009, the highest value was 27.1% and the lowest value was 0.2%.

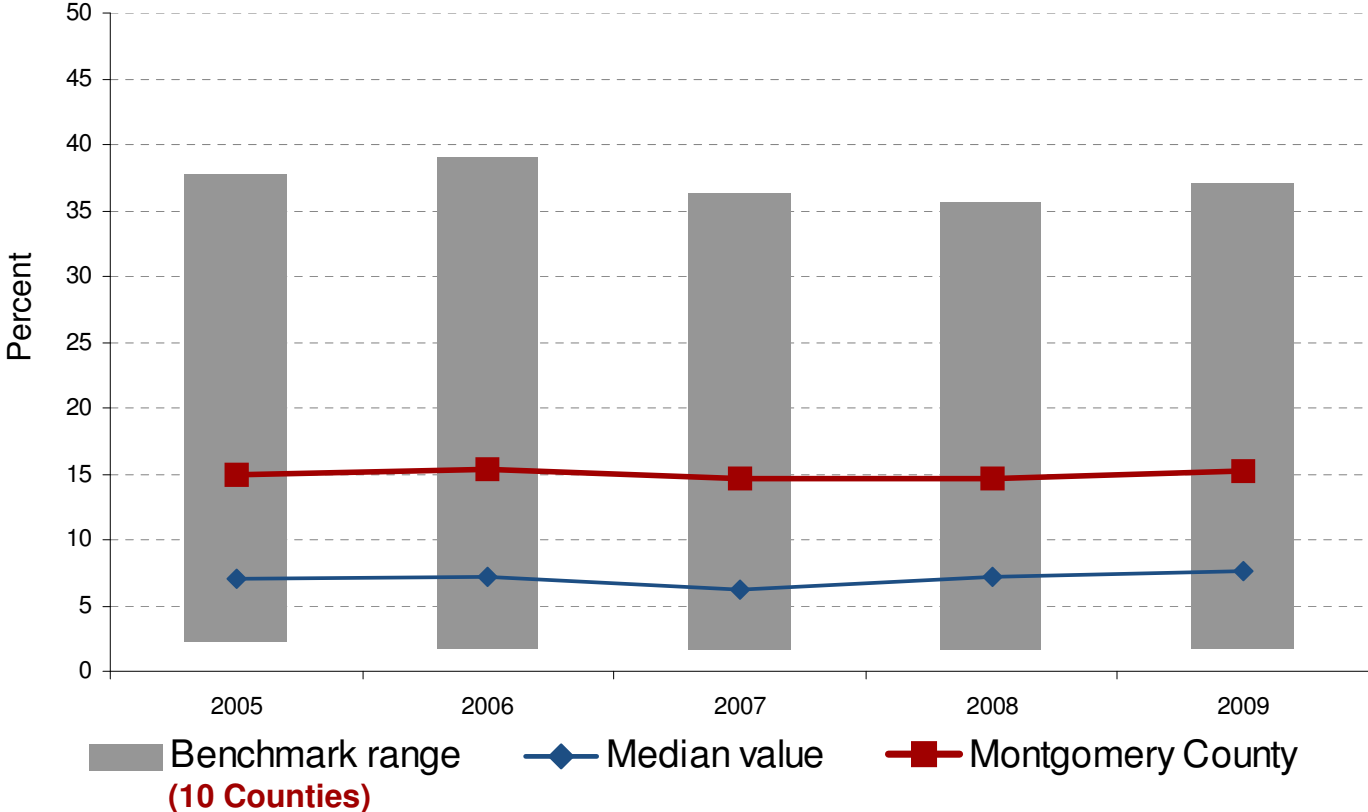


Source: U.S. Census Bureau, American Community Survey



An Effective and Efficient Transportation Network

Indicator: Percent of People Taking Public Transportation to Work



In 2009, the median value was 7.6 percent. In Montgomery County, 15.2% residents took public transportation to work. In 2009, the highest value was 37.1% and the lowest value was 7.6%.

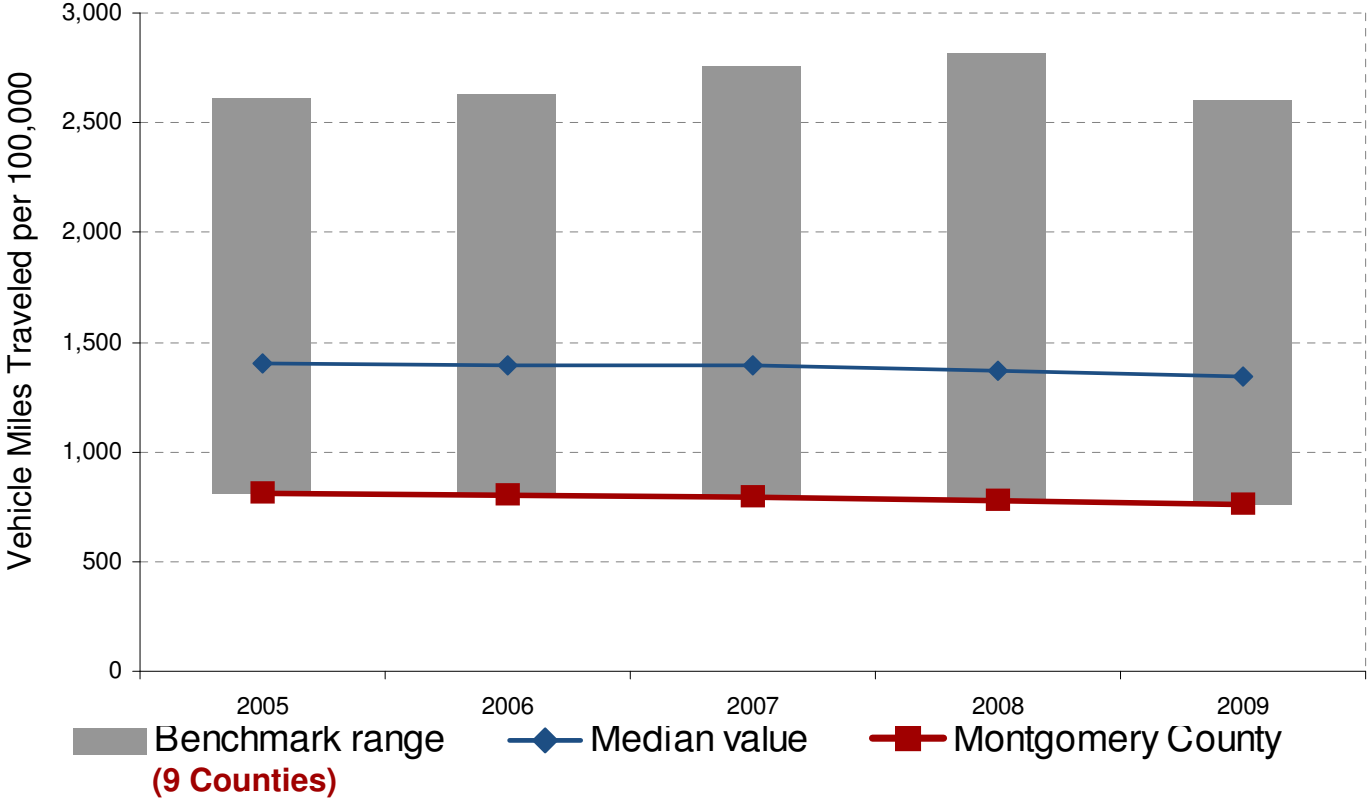


Source: U.S. Census Bureau, American Community Survey



An Effective and Efficient Transportation Network

Indicator: Vehicles Miles Traveled (VMT) per 100,000 Population



In 2009, the median value was 1,344 million VMT. There were 758 million vehicle miles traveled per 100,000 in Montgomery County. In 2009, the highest value was 2,599 million VMT per 100,000 and the lowest value was 758 million VMT per 100,000.

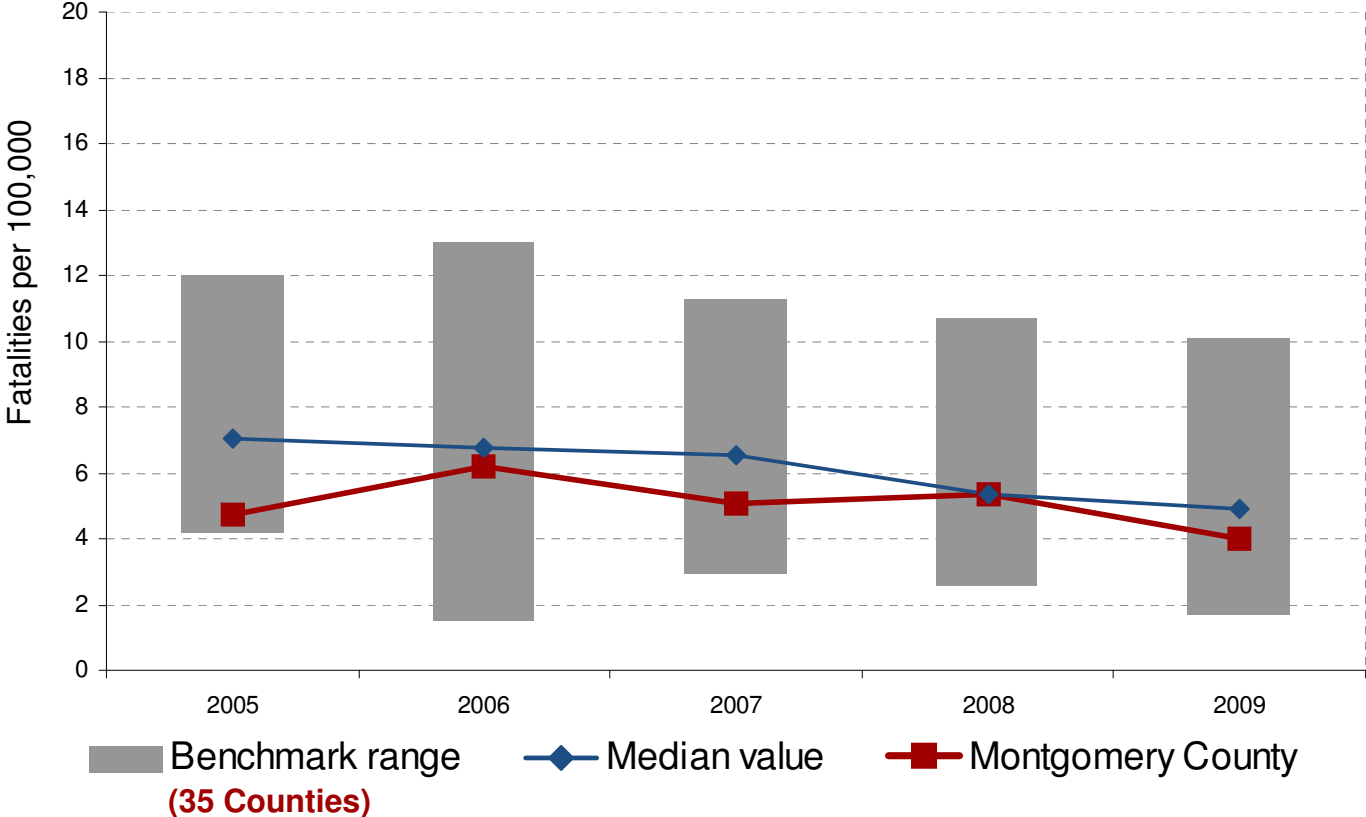


Note: Comparable data was only available via MSHA and VDOT
Source: Maryland State Highway Administration; Virginia Department of Transportation



An Effective and Efficient Transportation Network

Indicator: Traffic Fatalities per 100,000 Population



In 2009, the median value was 4.9 per 100,000. There were 4.0 traffic fatalities per 100,000 population in Montgomery County. In 2009, the highest value was 10.1 per 100,000 and the lowest value was 1.7 per 100,000.

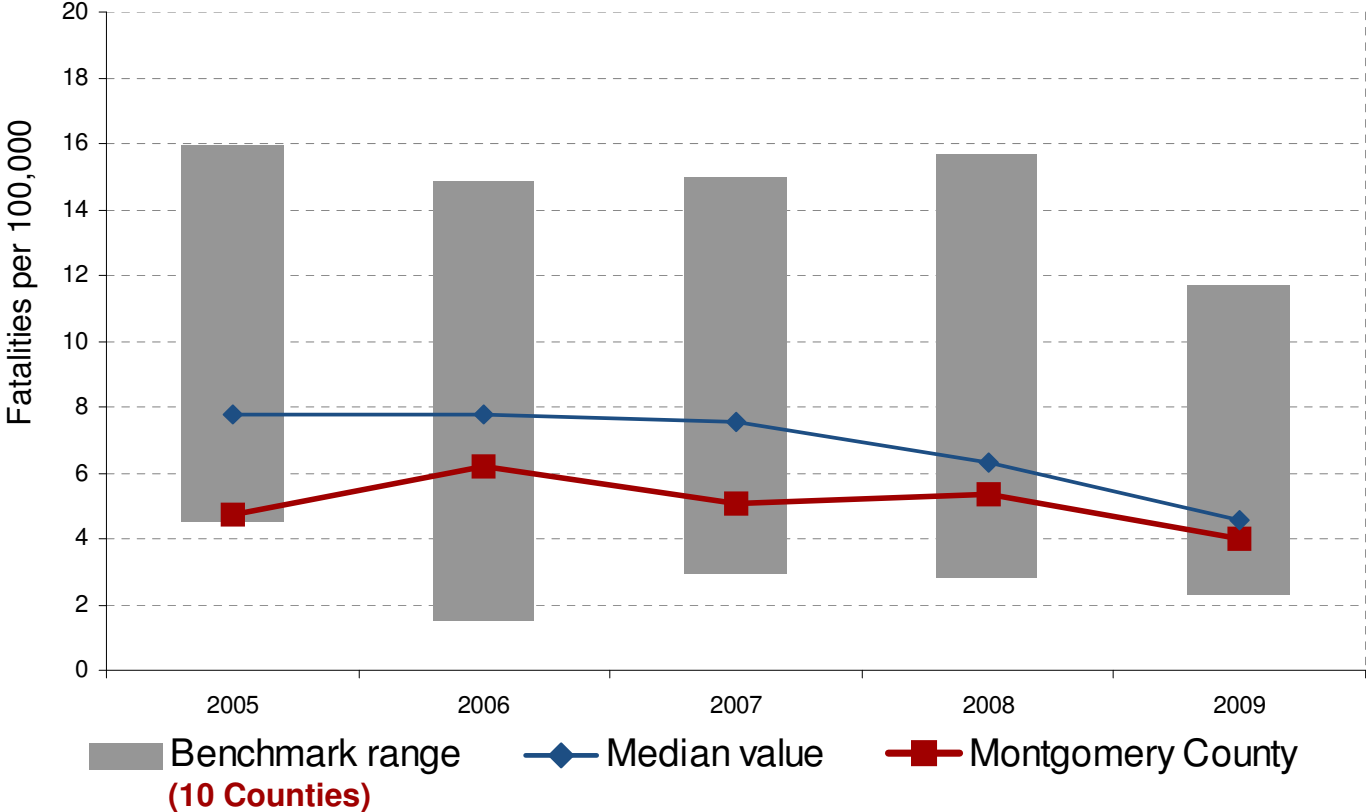


Source: National Highway Traffic Safety Administration, Fatality Reporting Analysis Systems; Only 2006-2009 data available



An Effective and Efficient Transportation Network

Indicator: Traffic Fatalities per 100,000 Population



In 2009, the median value was 4.6 per 100,000. There were 4.0 traffic fatalities per 100,000 population in Montgomery County. In 2009, the highest value was 11.7 per 100,000 and the lowest value was 2.3 per 100,000.



Source: National Highway Traffic Safety Administration, Fatality Reporting Analysis Systems

