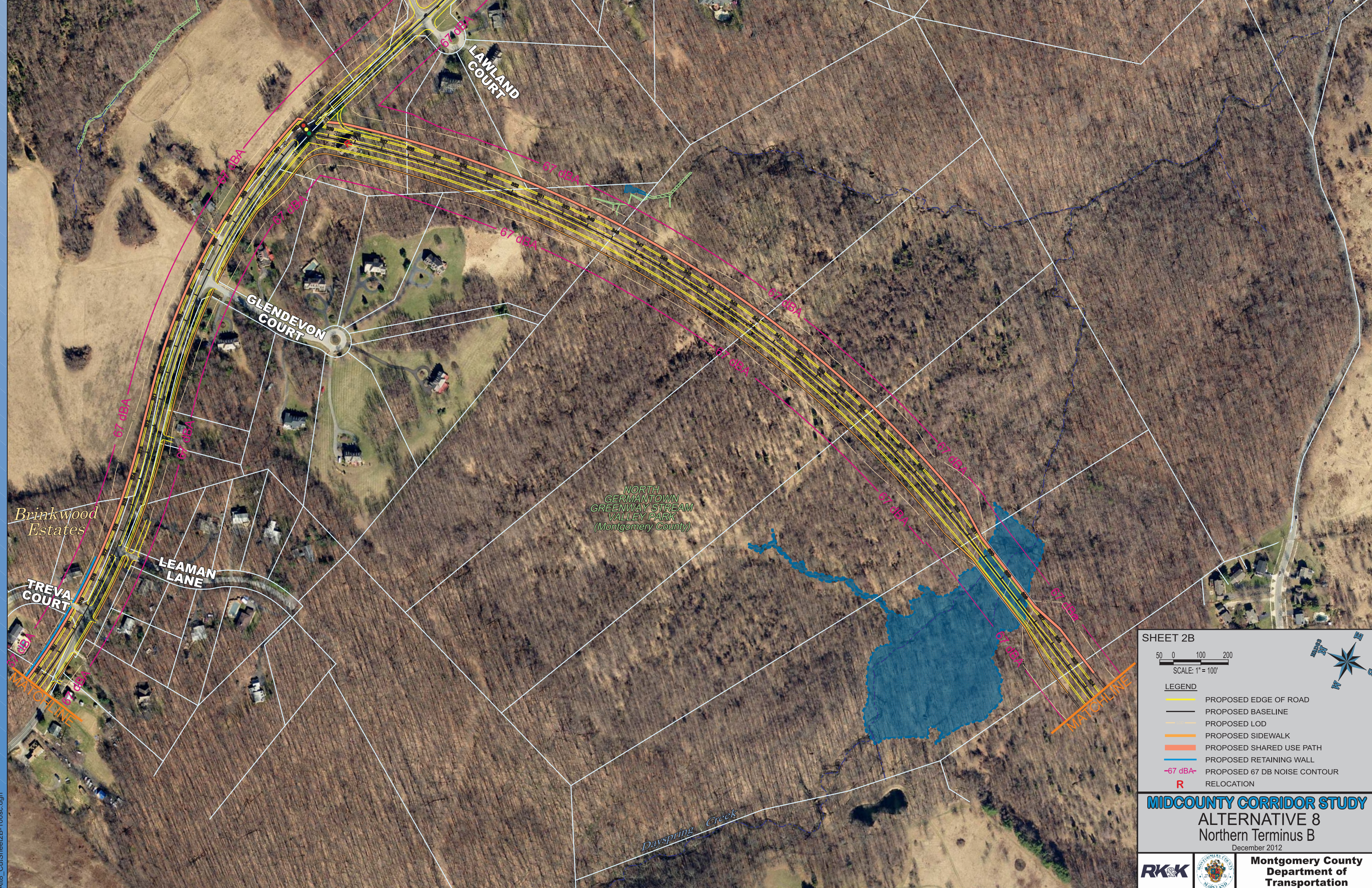
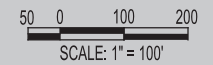


A18_CutSheet2B-100sc.dgn



SHEET 2B



LEGEND

- PROPOSED EDGE OF ROAD
- PROPOSED BASELINE
- PROPOSED LOD
- PROPOSED SIDEWALK
- PROPOSED SHARED USE PATH
- PROPOSED RETAINING WALL
- PROPOSED 67 DB NOISE CONTOUR
- RELOCATION

MIDCOUNTRY CORRIDOR STUDY
ALTERNATIVE 8
Northern Terminus B
December 2012



Montgomery County
Department of
Transportation

