

Results Area: An Efficient and Effective Transportation Network

Traffic gridlock is the number one concern of many of our residents and businesses. It is a threat to the economic competitiveness of our businesses. It robs families of essential time together and pollutes the air we breathe. New roads and transit are important solutions, but they often require many years to implement. As we work on long-range strategies, the Leggett Administration is also committed to immediate action on a wide range of useful and practical actions that can reduce gridlock now. These solutions will require great creativity, regional collaboration, and the shared actions of residents, governments, and businesses.

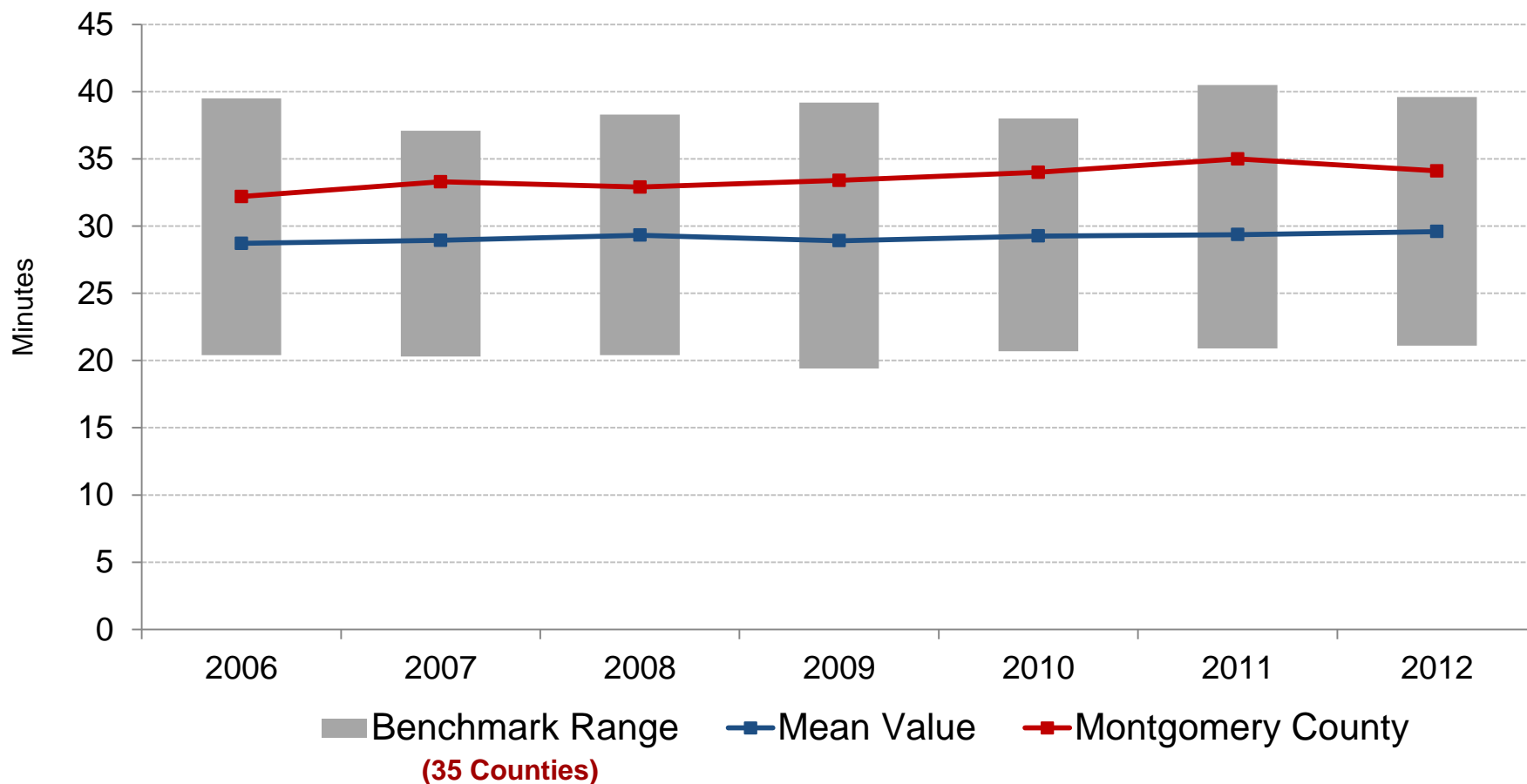
Statement on An Efficient and Effective Transportation Network from the Leggett Transition Team Report (December 2006)



An Effective and Efficient Transportation Network

National Benchmark

Indicator: Mean Travel Time to Work (Commute Time)

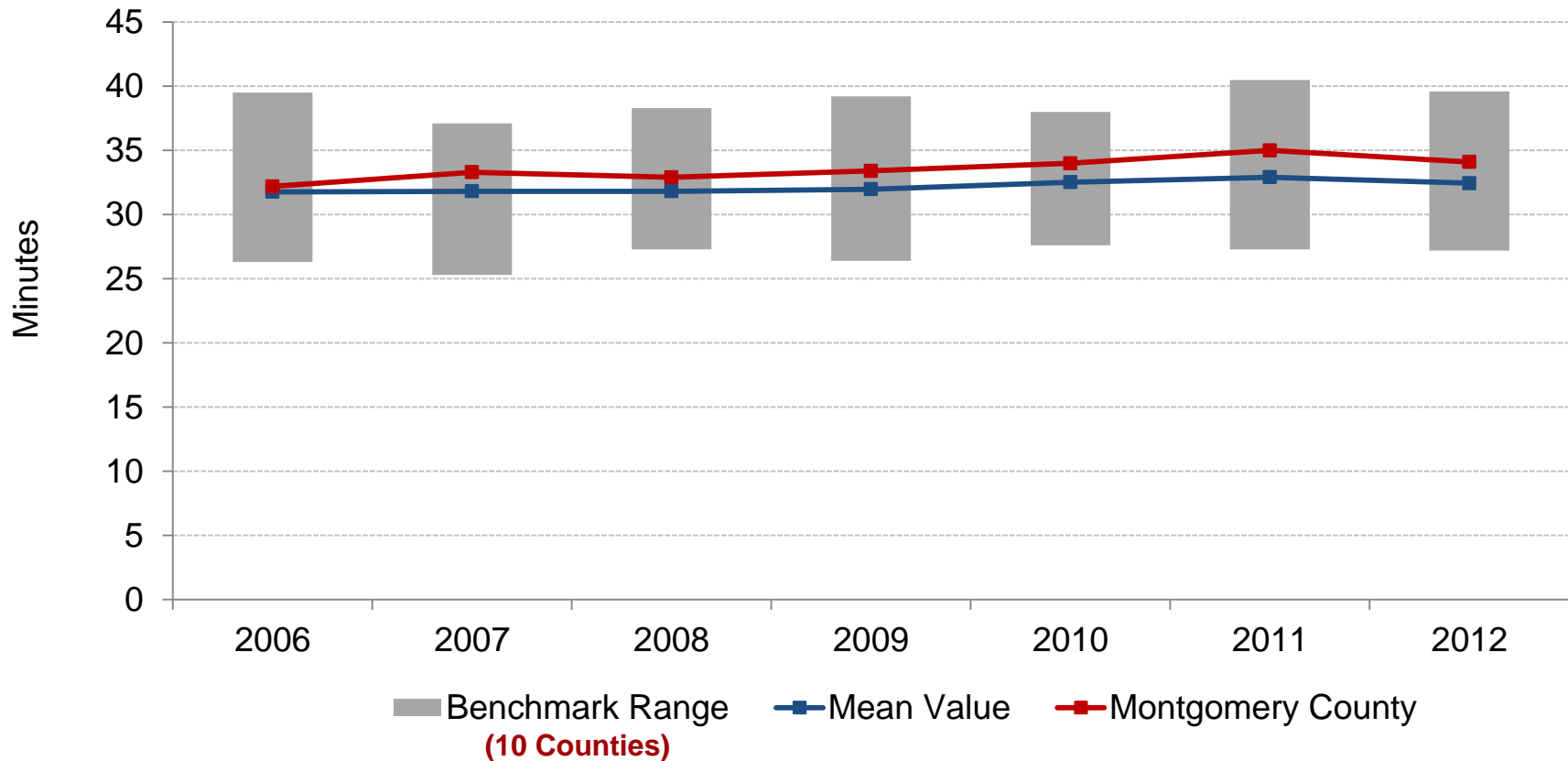


In 2012, the overall mean travel time was 29.4 minutes, which is a .8% increase from 2011. In Montgomery County, mean travel time to work was 34.1 minutes, which is a 2.6% decrease from 2011.



Source: U.S. Census Bureau, American Community Survey

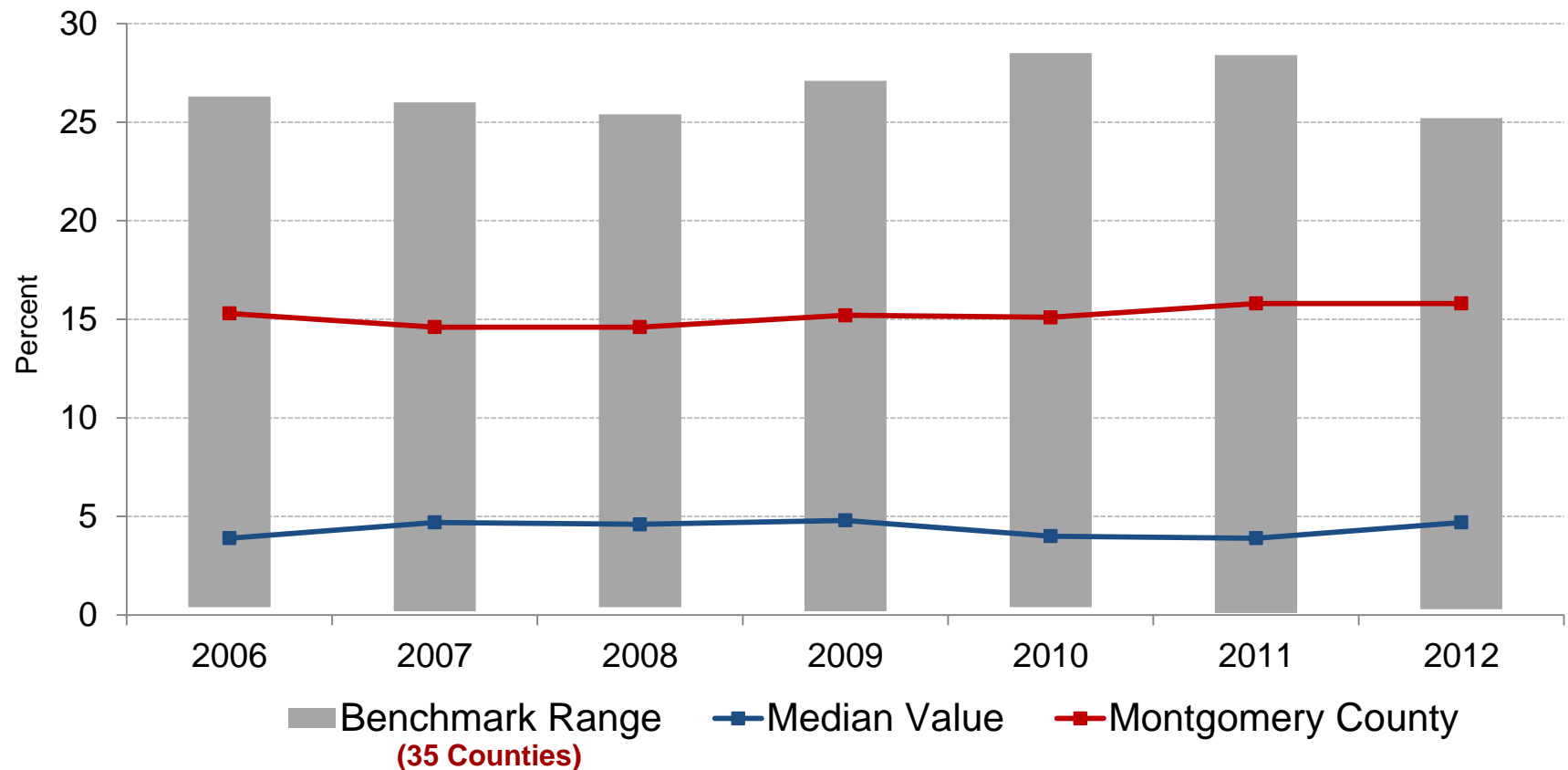
CountyStat

An Effective and Efficient Transportation Network**Indicator: Mean Travel Time to Work (Commute Time)**

In 2012, the overall mean travel time was 32.5 minutes, which is a 1.4% decrease from 2011. In Montgomery County, mean travel time to work was 34.1 minutes, which is a 2.6% decrease from 2011.



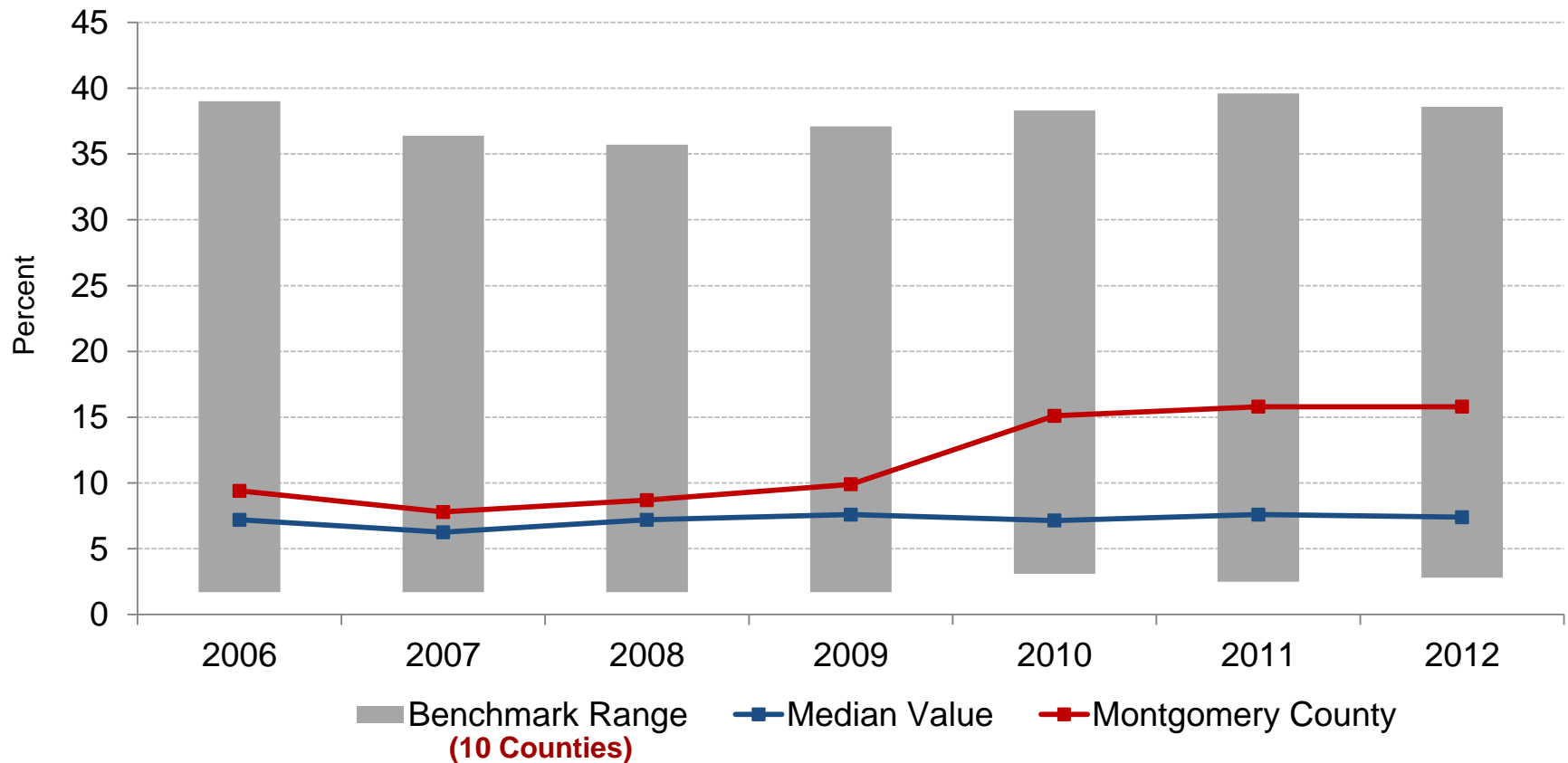
Source: U.S. Census Bureau, American Community Survey

An Effective and Efficient Transportation Network**Indicator: Percent of People Taking Public Transportation to Work**

In 2012, the median value was 4.7%. In Montgomery County, 15.8% of residents took public transportation to work. In 2012, the highest value was 25.2% and the lowest value was 0.3%.



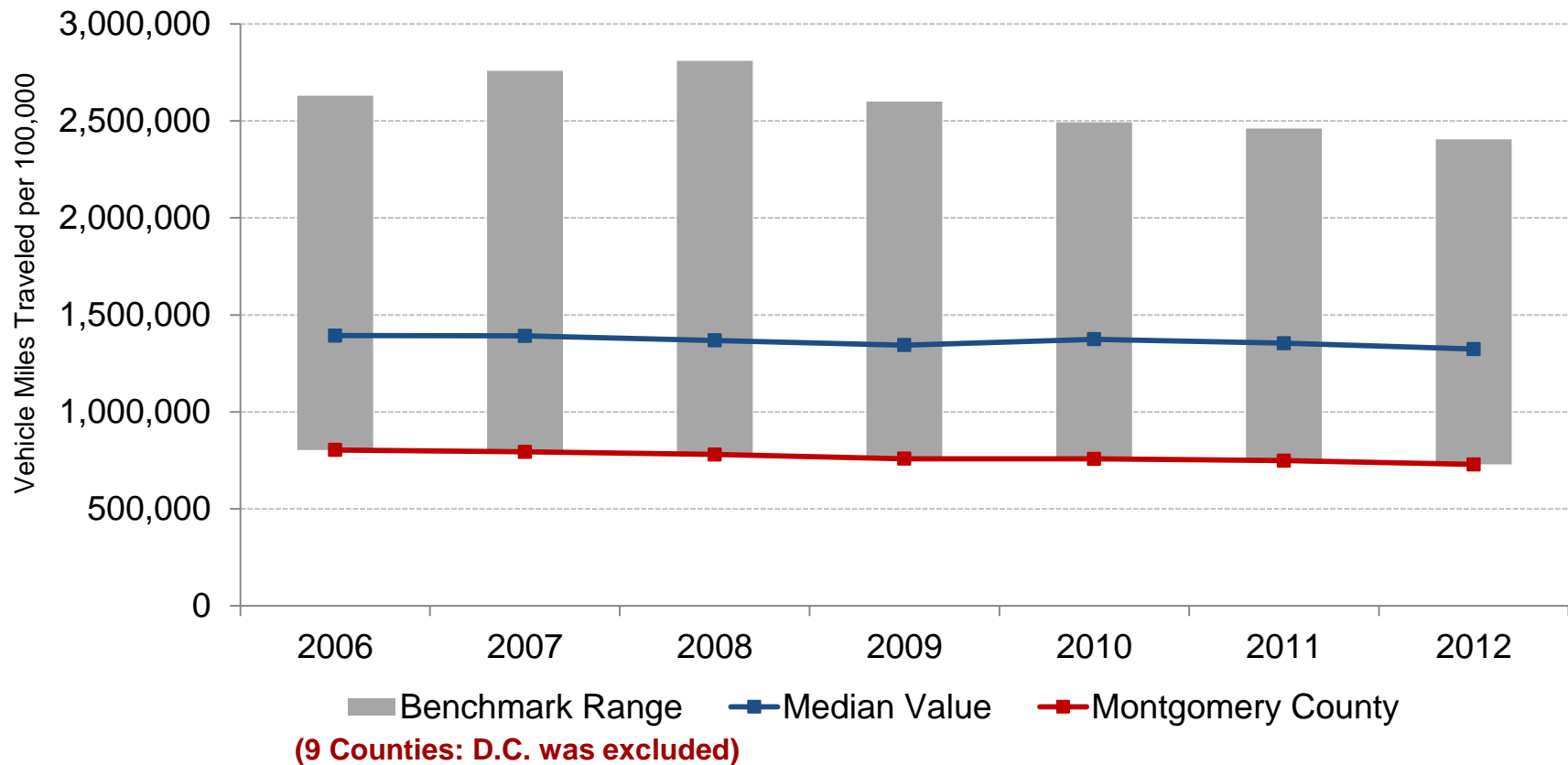
Source: U.S. Census Bureau, American Community Survey

An Effective and Efficient Transportation Network**Indicator: Percent of People Taking Public Transportation to Work**

In 2012, the median value was 7.4%. In Montgomery County, 15.8% of residents took public transportation to work. In 2012, the highest value was 38.6% and the lowest value was 2.8%.



Source: U.S. Census Bureau, American Community Survey

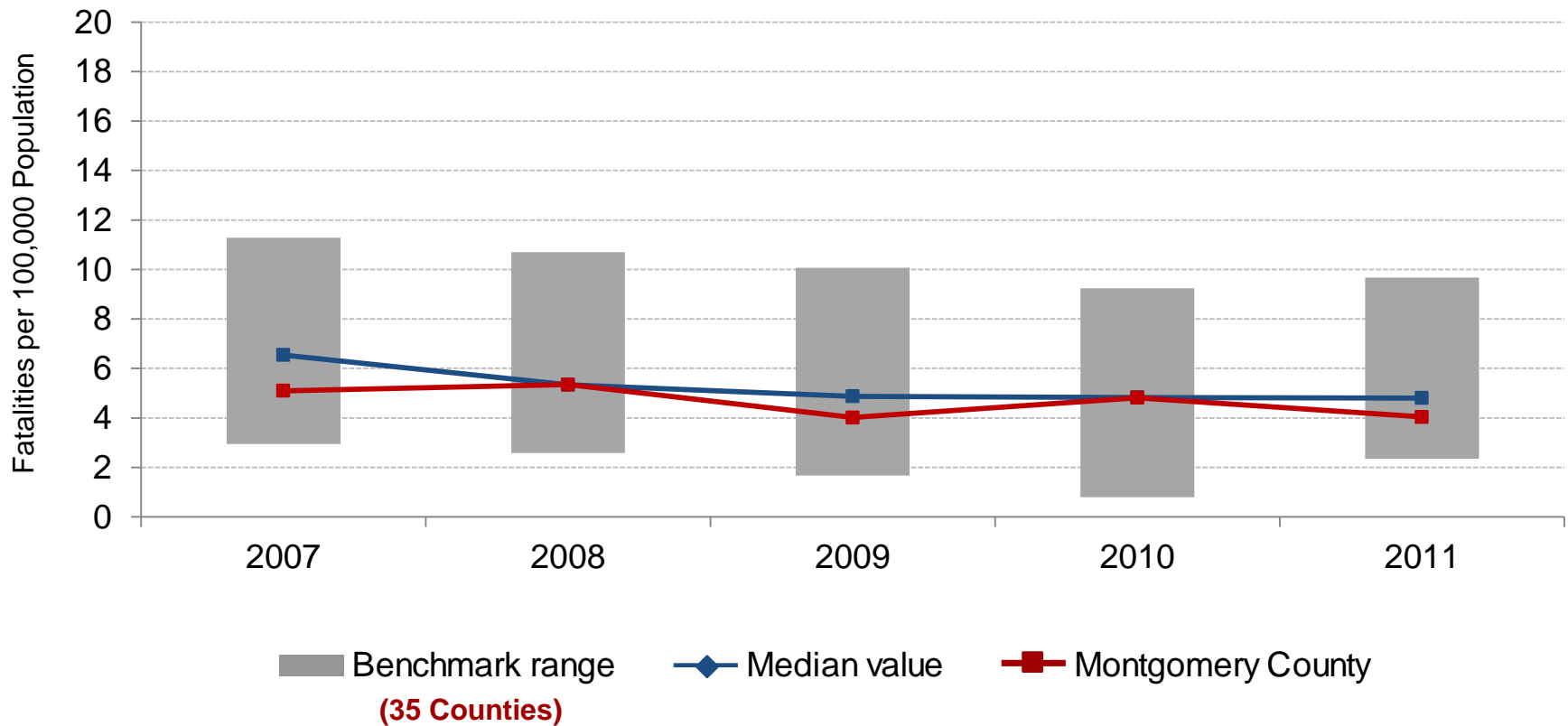
An Effective and Efficient Transportation Network**Indicator: Vehicles Miles Traveled (VMT) per 100,000 Population**

In 2012, the median value was 1.3 million VMT. There were .729 million VMT in Montgomery County. In 2012, the highest value was 2.4 million VMT and the lowest value was .729 million VMT.



Note: Comparable data was only available via MSHA and VDOT

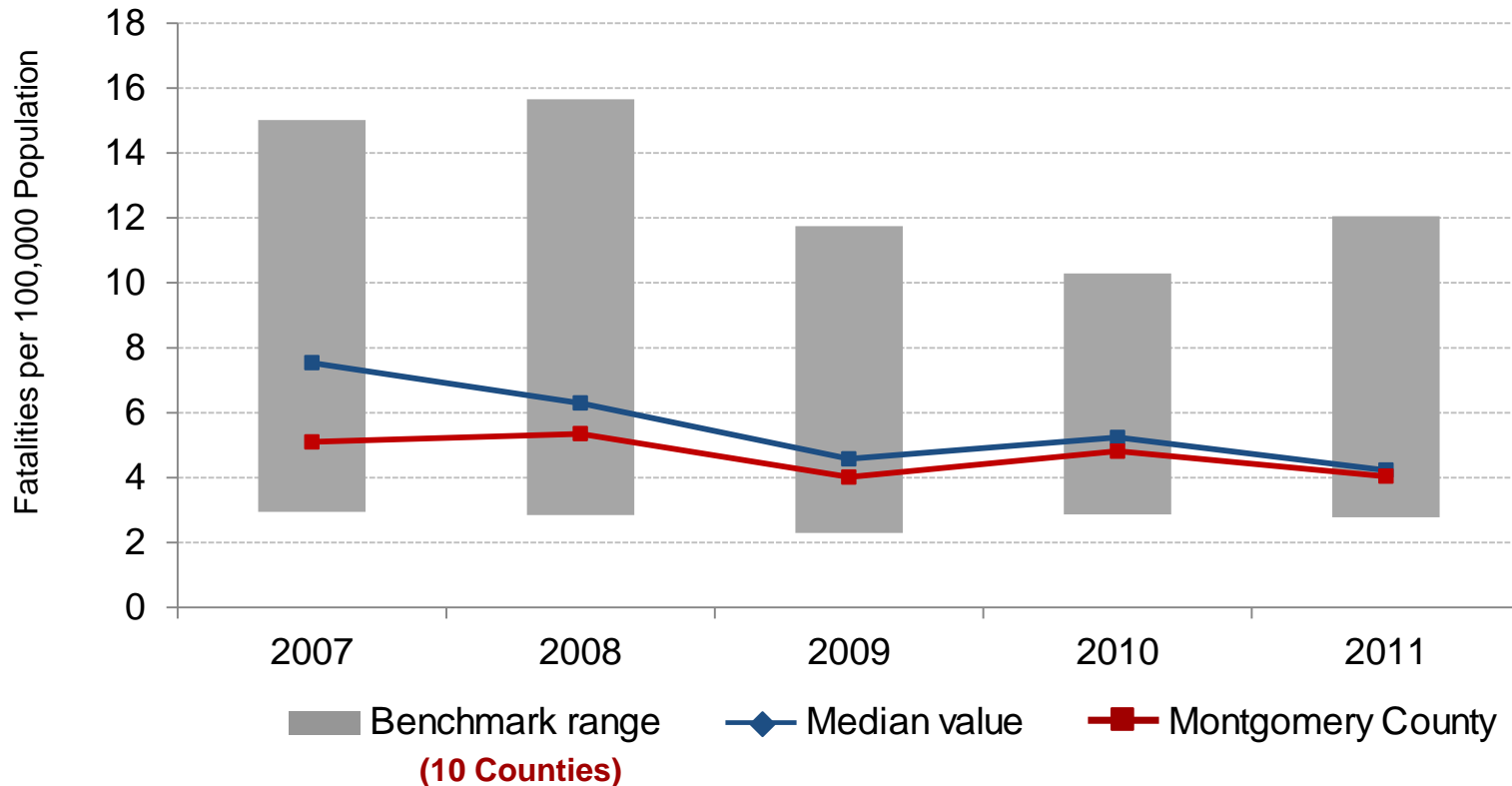
Source: Maryland State Highway Administration; Virginia Department of Transportation

An Effective and Efficient Transportation Network**Indicator: Traffic Fatalities per 100,000 Population**

In 2011, the median value was 4.8 per 100,000. There were 4.0 traffic fatalities per 100,000 population in Montgomery County. In 2011, the highest value was 9.7 per 100,000 and the lowest value was 2.4 per 100,000.



Source: National Highway Traffic Safety Administration, Fatality Reporting Analysis Systems

An Effective and Efficient Transportation Network**Indicator: Traffic Fatalities per 100,000 Population**

In 2011, the median value was 4.2 per 100,000. There were 4.0 traffic fatalities per 100,000 population in Montgomery County. In 2011, the highest value was 12.1 per 100,000 and the lowest value was 2.8 per 100,000.



Source: National Highway Traffic Safety Administration, Fatality Reporting Analysis Systems