

REPLACEMENT OF BRIDGE NO. M-PK24
Beach Drive over Silver Creek

VICINITY MAP

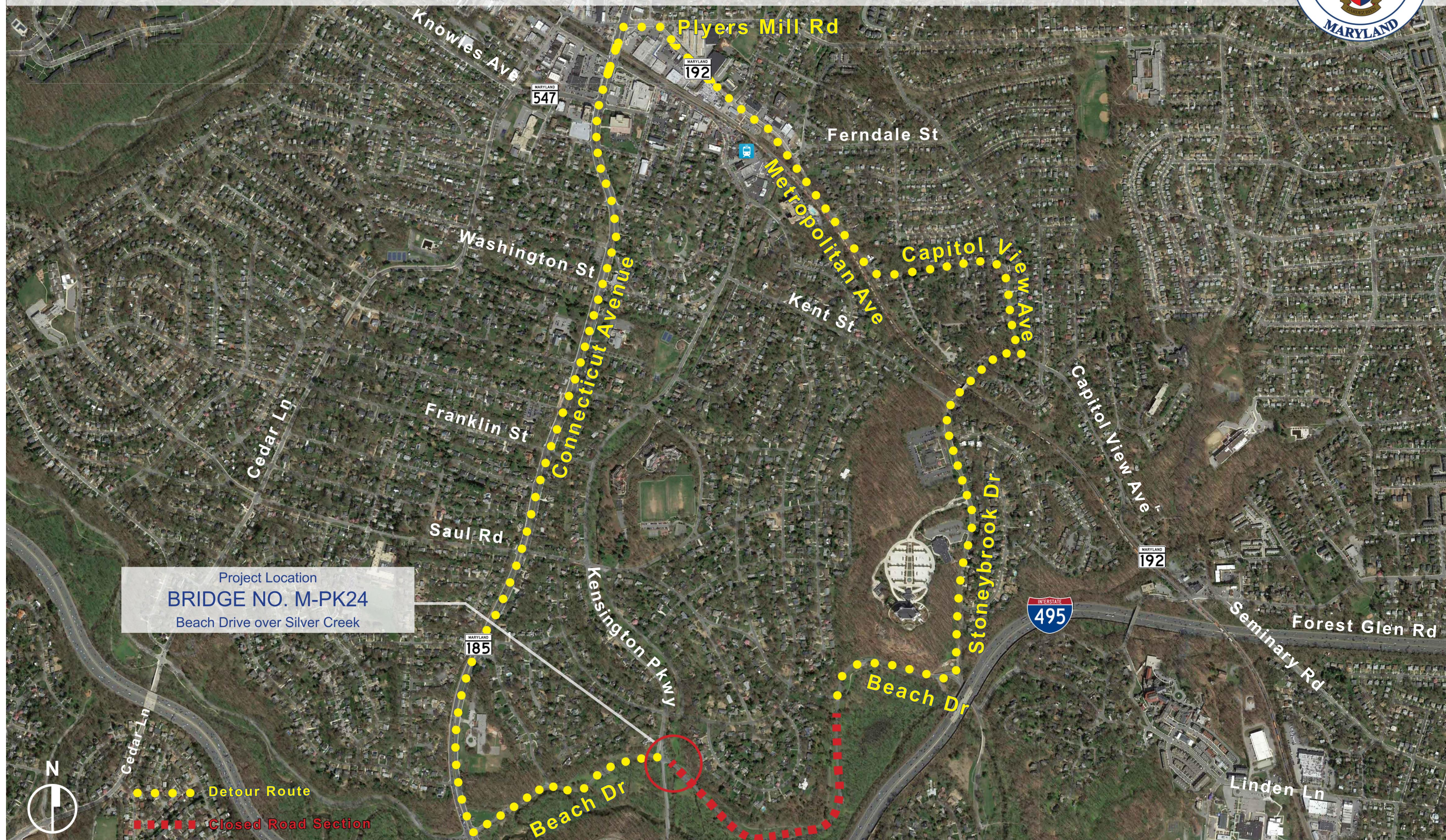


Project Location
BRIDGE NO. M-PK24
Beach Drive over Silver Creek



REPLACEMENT OF BRIDGE NO. M-PK24
Beach Drive over Silver Creek

PROPOSED DETOUR ROUTE



Project Location
BRIDGE NO. M-PK24
Beach Drive over Silver Creek

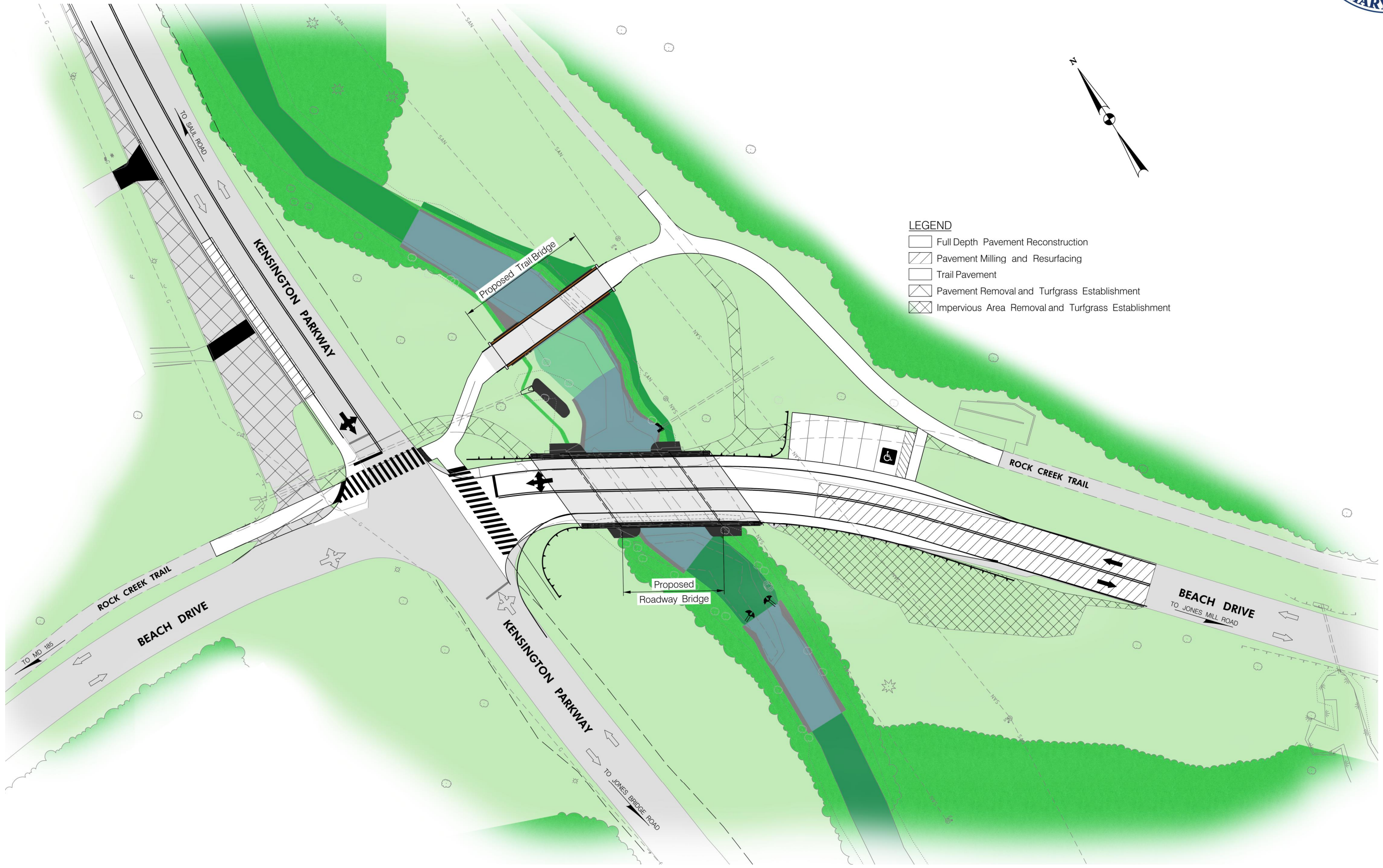


●●●●● Detour Route
■■■■■ Closed Road Section

REPLACEMENT OF BRIDGE NO. M-PK24

Beach Drive over Silver Creek

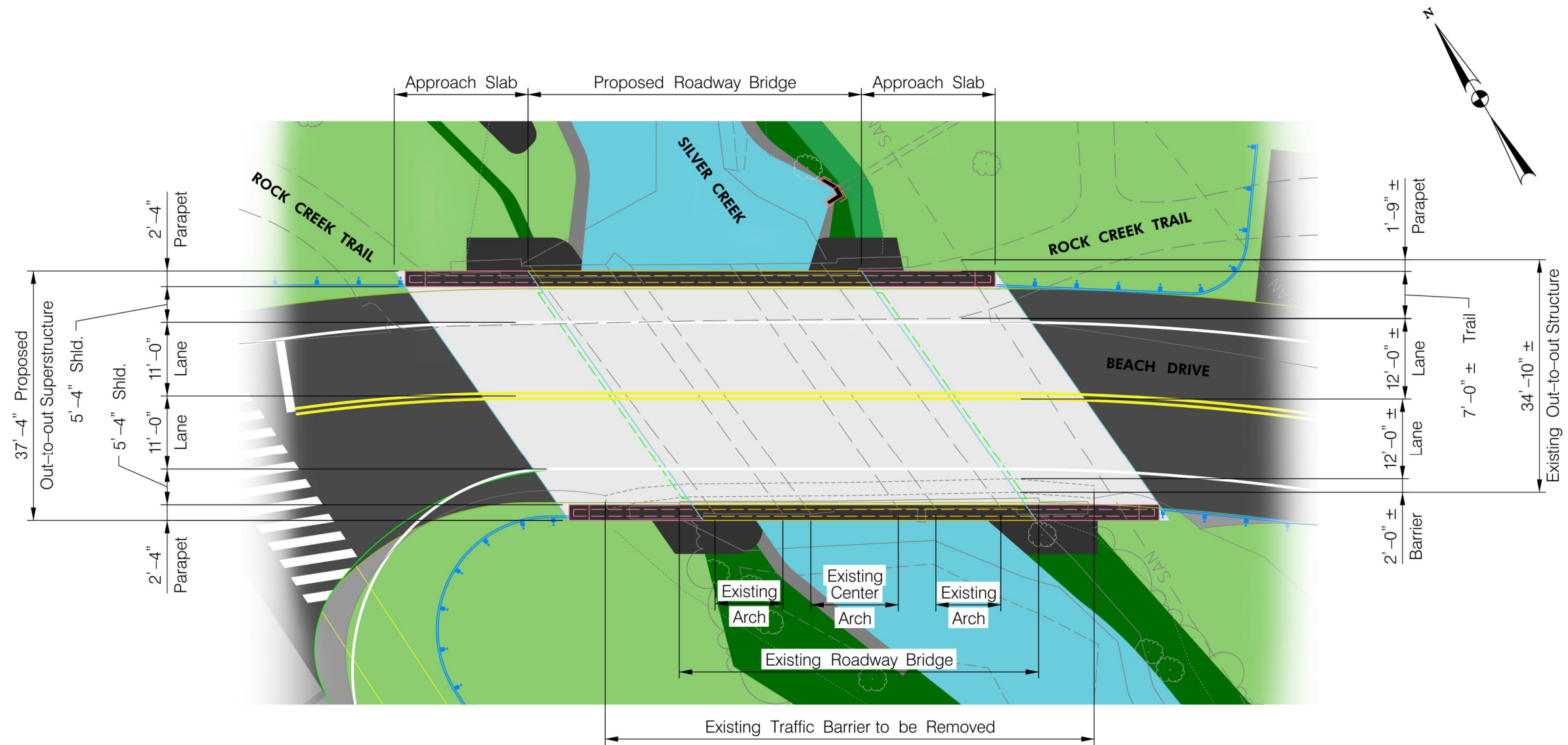
PROPOSED ROADWAY PLAN



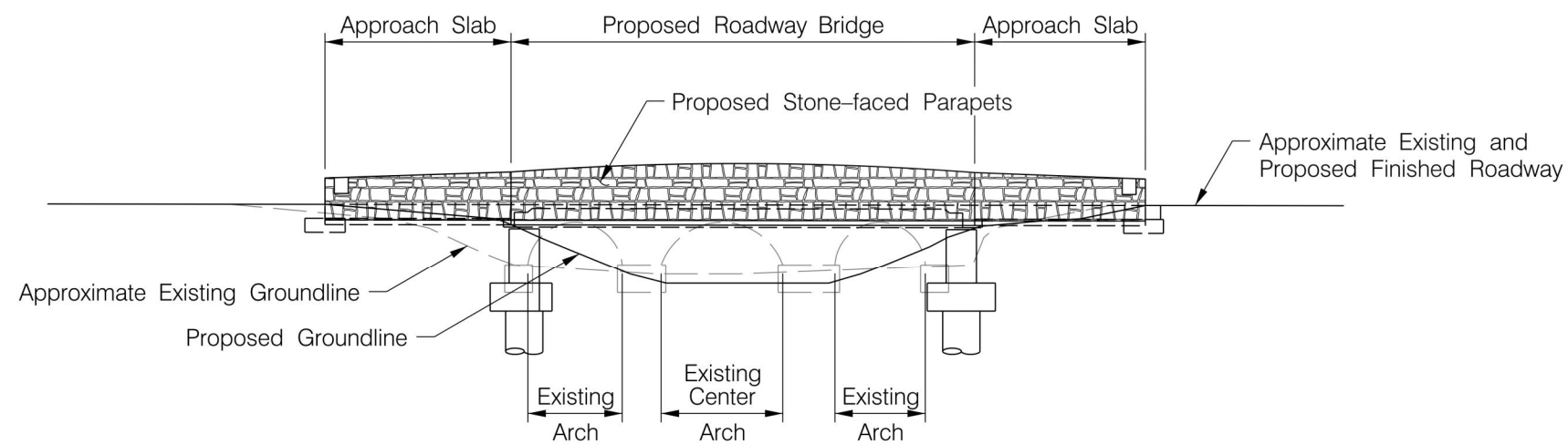
- LEGEND**
- Full Depth Pavement Reconstruction
 - Pavement Milling and Resurfacing
 - Trail Pavement
 - Pavement Removal and Turfgrass Establishment
 - Impervious Area Removal and Turfgrass Establishment

REPLACEMENT OF BRIDGE NO. M-PK24
Beach Drive over Silver Creek

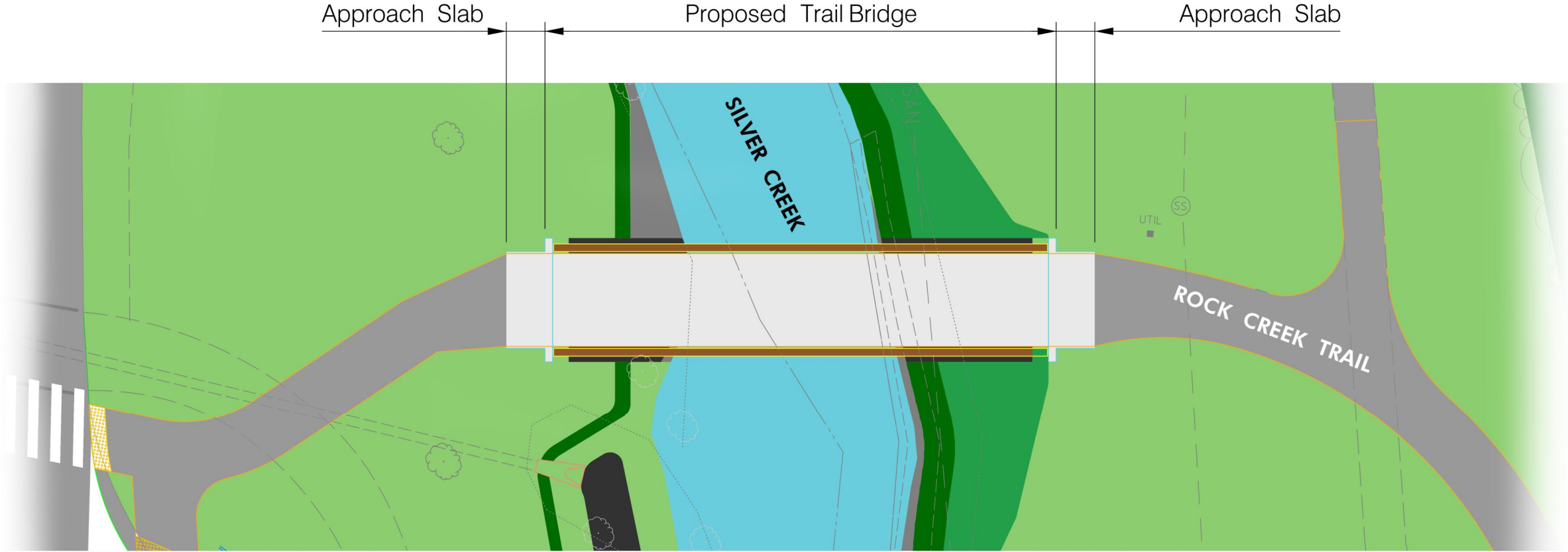
PROPOSED ROADWAY BRIDGE



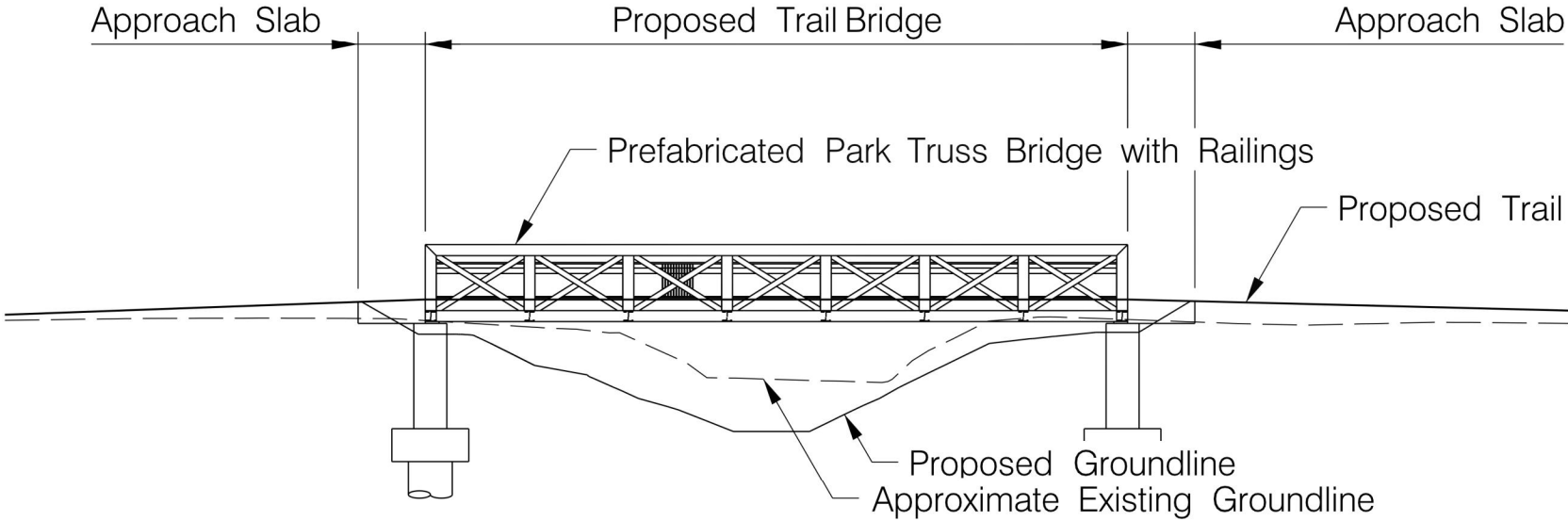
Roadway Bridge Plan



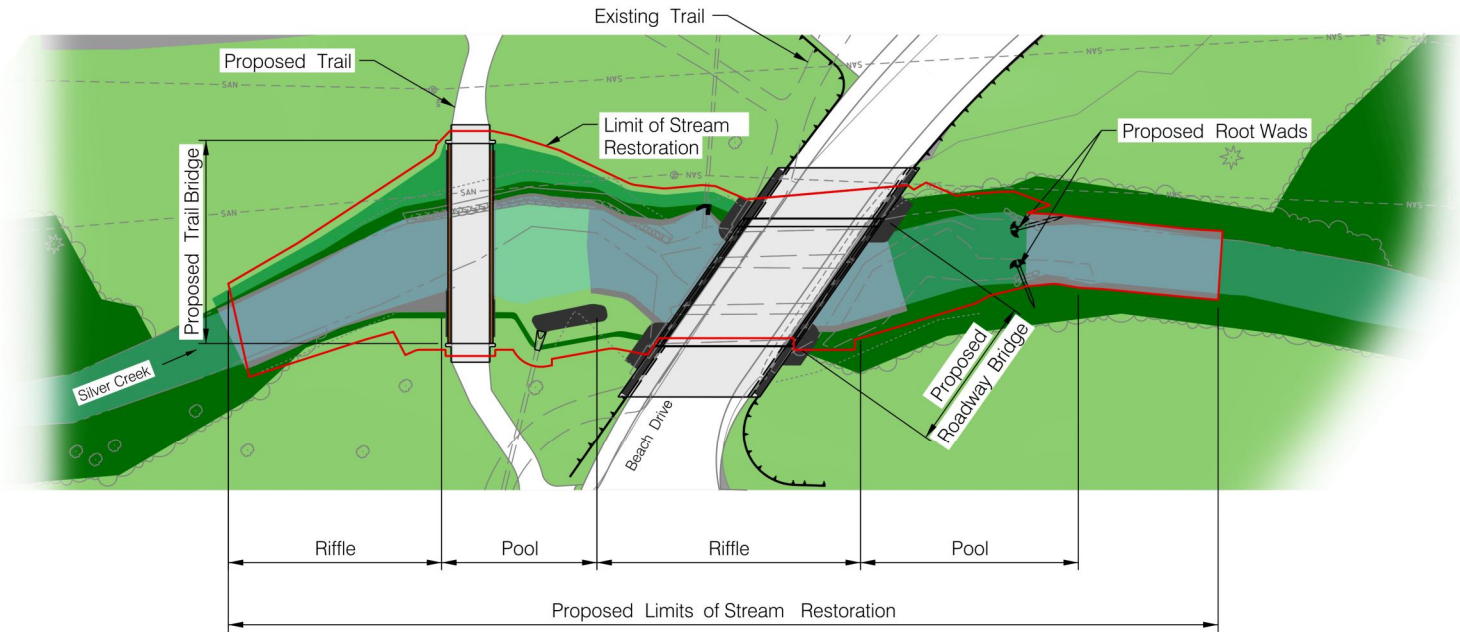
Roadway Bridge Elevation



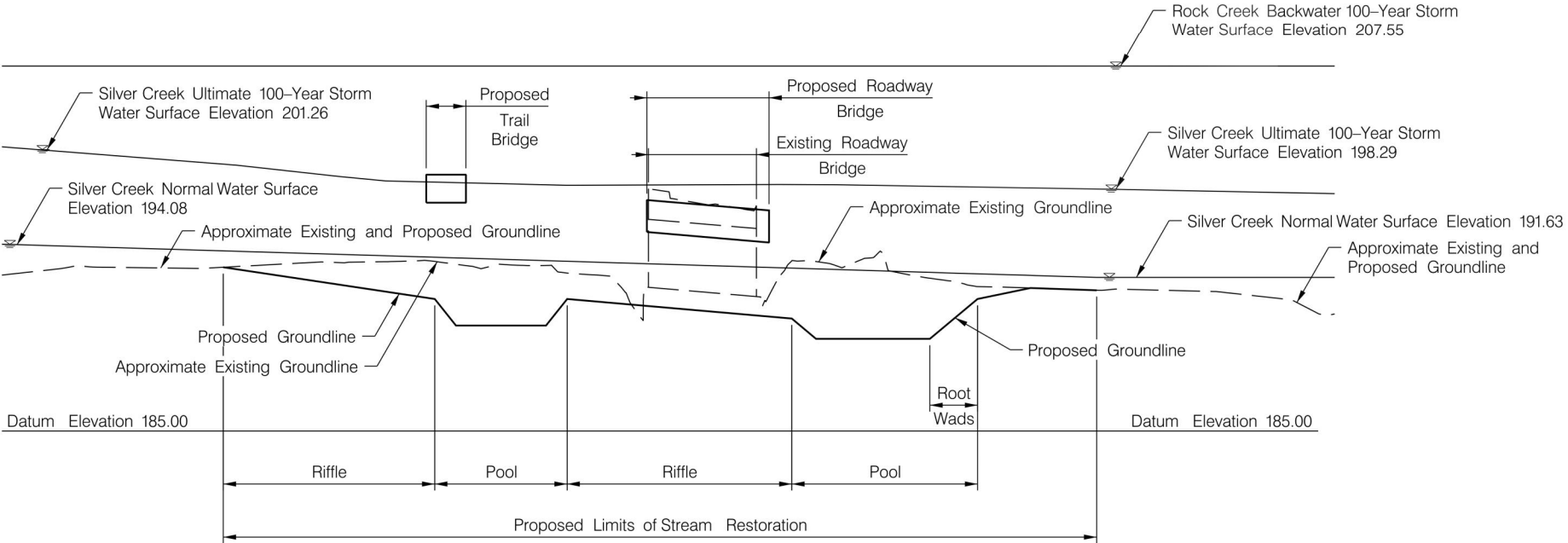
Trail Bridge Plan



Trail Bridge Elevation



Stream Restoration – Plan



Stream Restoration – Profile

Vertical Exaggeration 5:1

REPLACEMENT OF BRIDGE NO. M-PK24
Beach Drive over Silver Creek

PROPOSED PROJECT RENDERING



This is an artistic rendering, and the image may not represent the final design