



BRADLEY BOULEVARD IMPROVEMENTS AND MD 191 (BRADLEY BOULEVARD) AT MD 188 (WILSON LANE) INTERSECTION IMPROVEMENTS PROJECTS

PUBLIC MEETING | JUNE 22, 2021

Division of
Transportation Engineering
Montgomery County Department of Transportation





BRADLEY BOULEVARD (MD191) IMPROVEMENTS PROJECT

Introductions – Presenters

**Bradley Boulevard
Improvements Project**
CIP Number P501733

Jon Hutchings

*MCDOT - Division of
Transportation Engineering*

Mark Roberts

*Whitman, Requardt &
Associates, LLP*

**MD 191 (Bradley Boulevard) at MD 188
(Wilson Lane) Intersection Improvement**
CIP Number P507017

Devang Dave

*MCDOT - Division of Traffic
Engineering & Operations*

Michael Guiliano

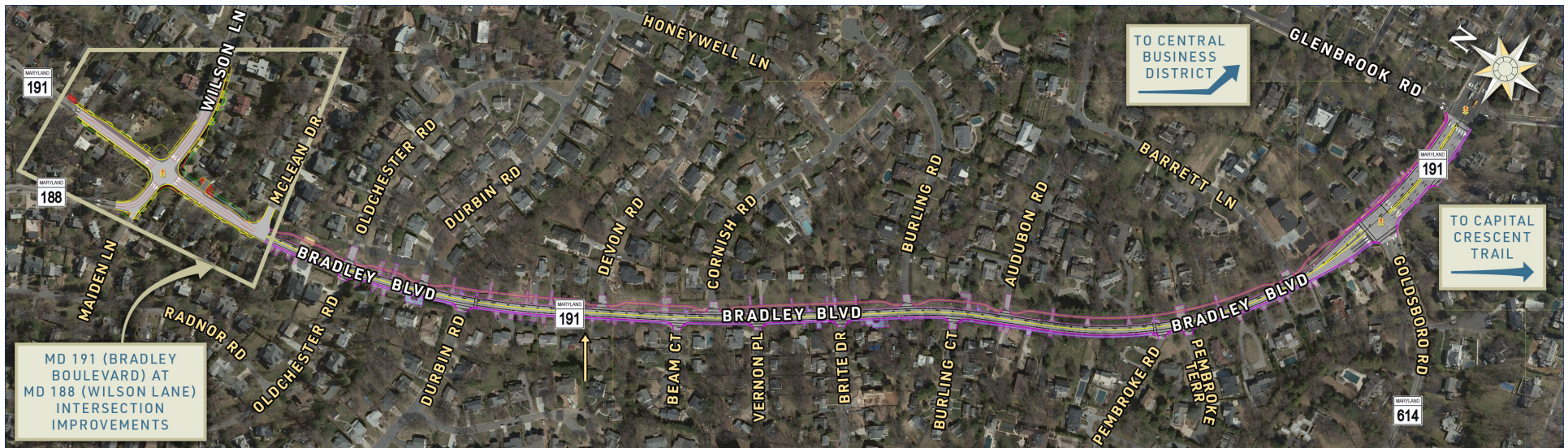
STV Incorporated



Division of
Transportation Engineering
Montgomery County Department of Transportation

BRADLEY BOULEVARD (MD191) IMPROVEMENTS PROJECT

Project Overview





Division of
Transportation Engineering
Montgomery County Department of Transportation

BRADLEY BOULEVARD (MD191) IMPROVEMENTS PROJECT

Project Overview

Bethesda, MD

The purpose of the project is to make connections to missing areas of the bicycle and pedestrian network

[Bradley Blvd Connectivity.pdf](#)

Will improve pedestrian safety and provide access to transit stops and the Bethesda Central Business District

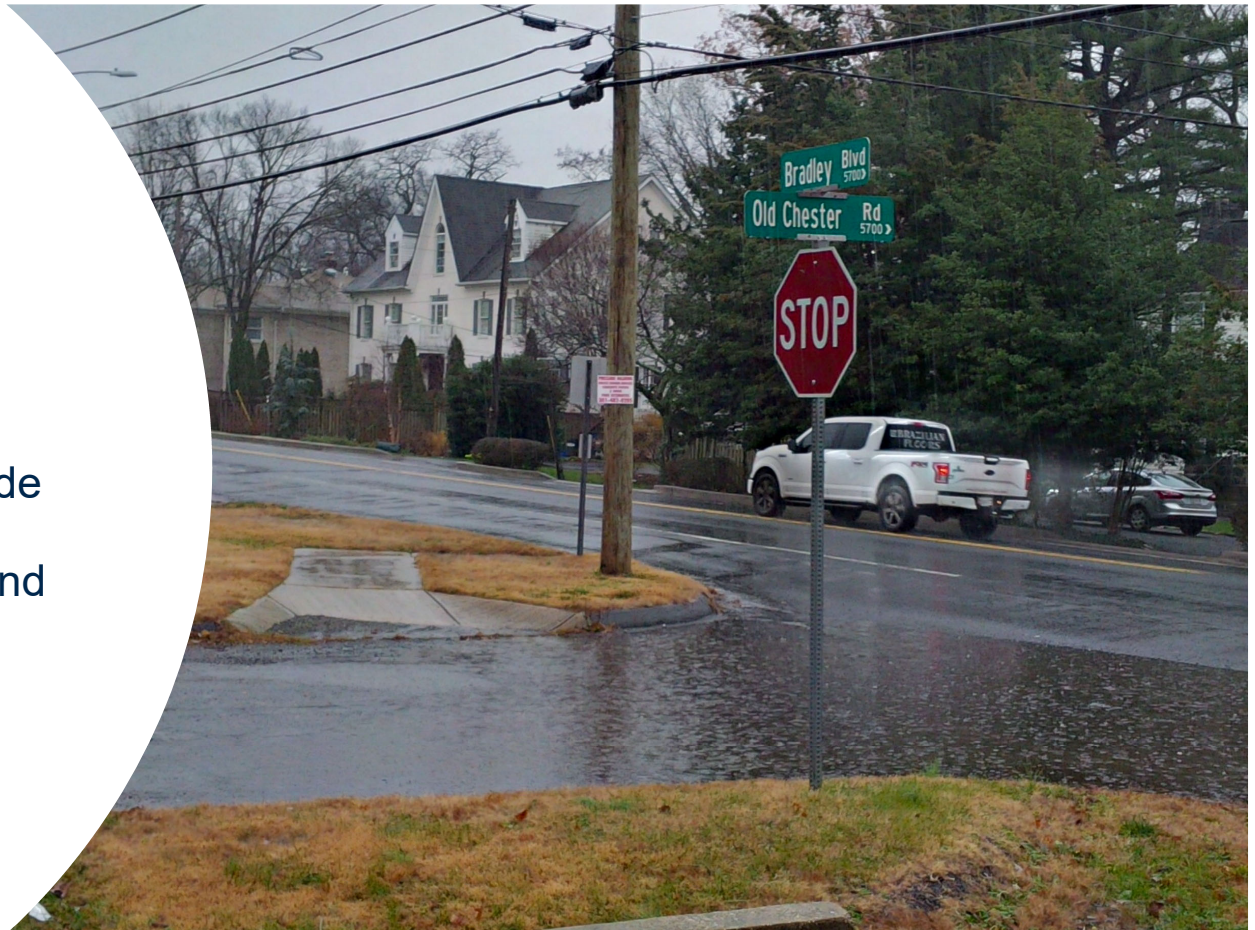




BRADLEY BOULEVARD (MD191) IMPROVEMENTS PROJECT

Project Overview

- Shared use path north side (odd number addresses)
- On-road bike lanes
- Curb and sidewalk south side (even number addresses)
- Stormwater management and drainage improvements
- Traffic signal reconstruction
- Pedestrian lighting along shared use path
- Utility pole relocations
- Additional crosswalks





BRADLEY BOULEVARD (MD191) IMPROVEMENTS PROJECT

Project History

- 1990 Bethesda-Chevy Chase Master Plan – dual bikeways on Bradley Boulevard
- 2003 – Petition for sidewalk
- March 2009 – Facility Planning – Phase I began following *1990 Bethesda-Chevy Chase Master Plan*
- 2009 & 2010 – Public meetings
- 2011 – Completed with a recommendation by the county council T&E committee to proceed to Phase II
- January 2012 – Facility Planning – Phase II began
- 2015 – Completed with 35% plans and public workshop
- 2015 to 2020 – No design work on Bradley Boulevard Improvements Project
- 2018 - MD 191 at MD 188 Intersection Improvements broken out as an advanced project
- 2018 - Montgomery Planning's *Bicycle Master Plan* – *sidepath and conventional bike lanes on Bradley Boulevard*
- November 2020 – Final Design began - Funded for design, land acquisitions, utility relocations, and construction



Current Activities - Field Investigations



GROUND SURVEYS

Complete



UTILITY DESIGNATION

Complete



ADDITIONAL SOIL BORINGS

Six additional
borings using a
hand auger
to be completed



TREE SURVEY

to be completed



UTILITY TEST HOLES

to be completed



BRADLEY BOULEVARD (MD191) IMPROVEMENTS PROJECT

Current Activities - Final Design



STORMWATER MANAGEMENT / DRAINAGE CONCEPT DESIGN

*MDOT SHA will review the
SWM design and maintain
the SWM facilities*



COORDINATION
with the Bradley
Boulevard at Wilson
Lane Intersection
Improvements Project

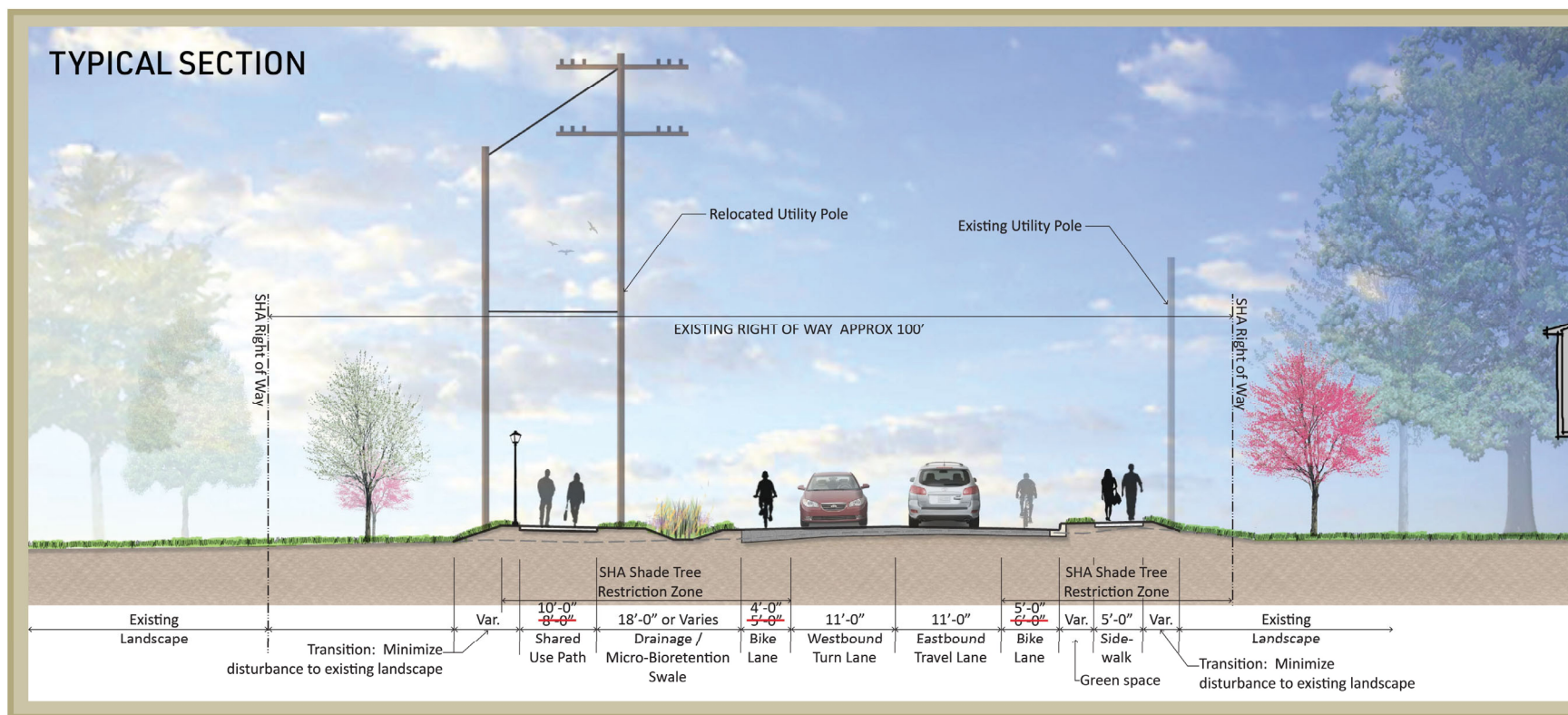


**ROADWAY AND
SHARED USE PATH
DESIGN**



BRADLEY BOULEVARD (MD191) IMPROVEMENTS PROJECT

Project Typical Section





Division of
Transportation Engineering
Montgomery County Department of Transportation

BRADLEY BOULEVARD (MD191) IMPROVEMENTS PROJECT

Additional Final Design Efforts

Utility Relocations

- Coordinate utility pole relocation with PEPCO, Verizon, Comcast, and others
- WSSC water and sewer - select adjustments of fire hydrants, valves, and other features
- Coordinate with Washington Gas for any necessary gas main relocations

Landscape Design

- Tree Save Plans





Division of
Transportation Engineering
Montgomery County Department of Transportation

BRADLEY BOULEVARD (MD191) IMPROVEMENTS PROJECT

Additional Final Design Efforts

Traffic Design

- Add two additional unsignalized crosswalks across Bradley Boulevard at Durbin Road and Pembroke Road
- Maintenance of Traffic during construction
- Signing and Marking
- Lighting – pedestrian level lighting and vehicular lighting at intersections
- Traffic signals – reconstructed at Goldsboro and Glenbrook Roads

Public Outreach

- Public Hearing prior to construction



**For more information or
to submit comments, please contact:**

Jon Hutchings | Project Manager, Bradley Boulevard Improvements Project

(240) 777-7224

jon.hutchings@montgomerycountymd.gov

MCDOT Division of Transportation Engineering web page:

www.montgomerycountymd.gov/dot-dte



**Division of
Transportation Engineering**

Montgomery County Department of Transportation