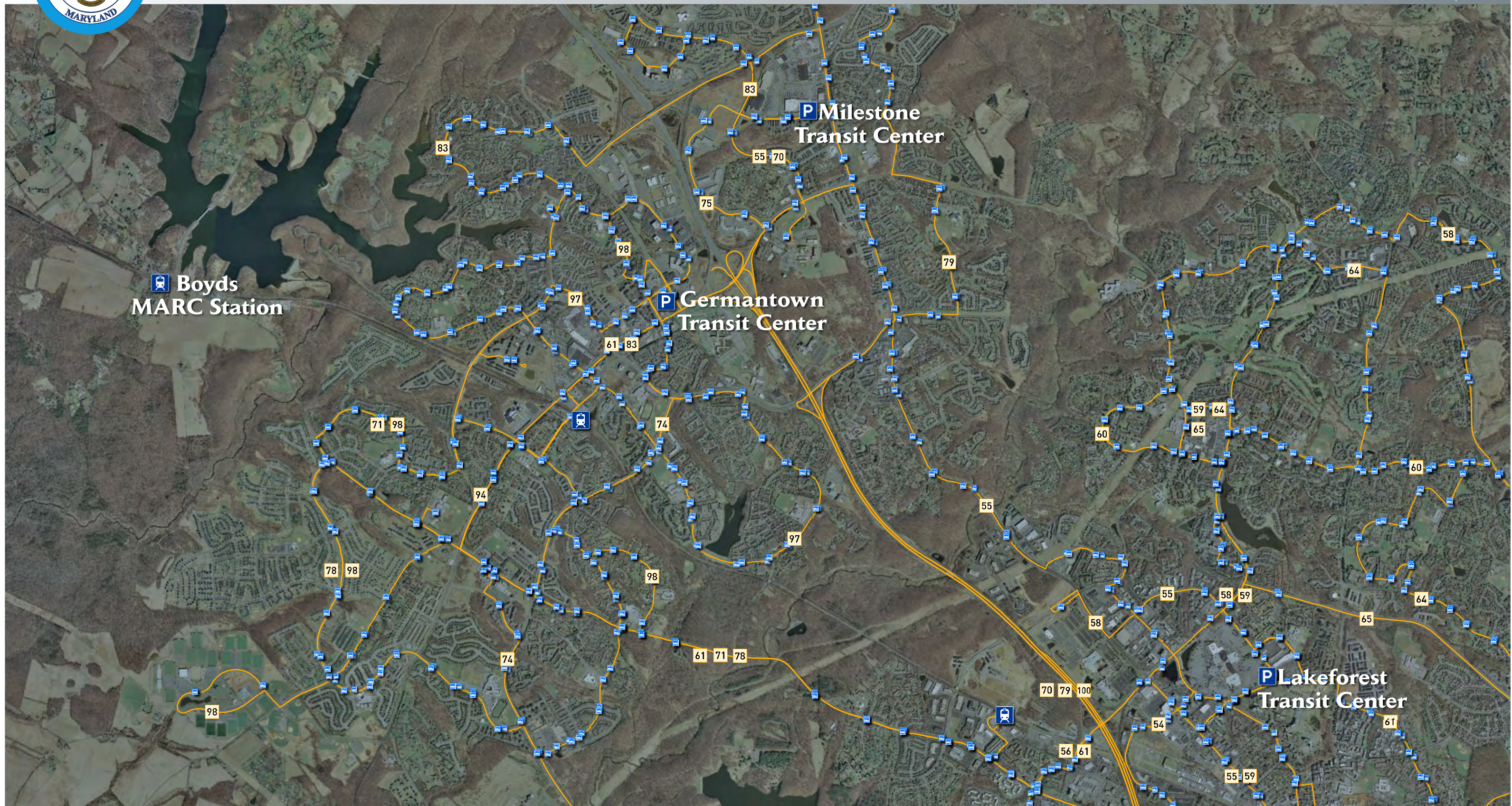




MONTGOMERY COUNTY TRANSIT PROJECTS

Montgomery County Department of Transportation



LEGEND



RIDE ON BUS STOP



RIDE ON BUS ROUTE



PARK AND RIDE LOT



MARC STATION



INDICATES RIDE ON ROUTE NUMBER



0 0.5 1 1.5 Miles



MONTGOMERY COUNTY TRANSIT PROJECTS

Montgomery County Department of Transportation

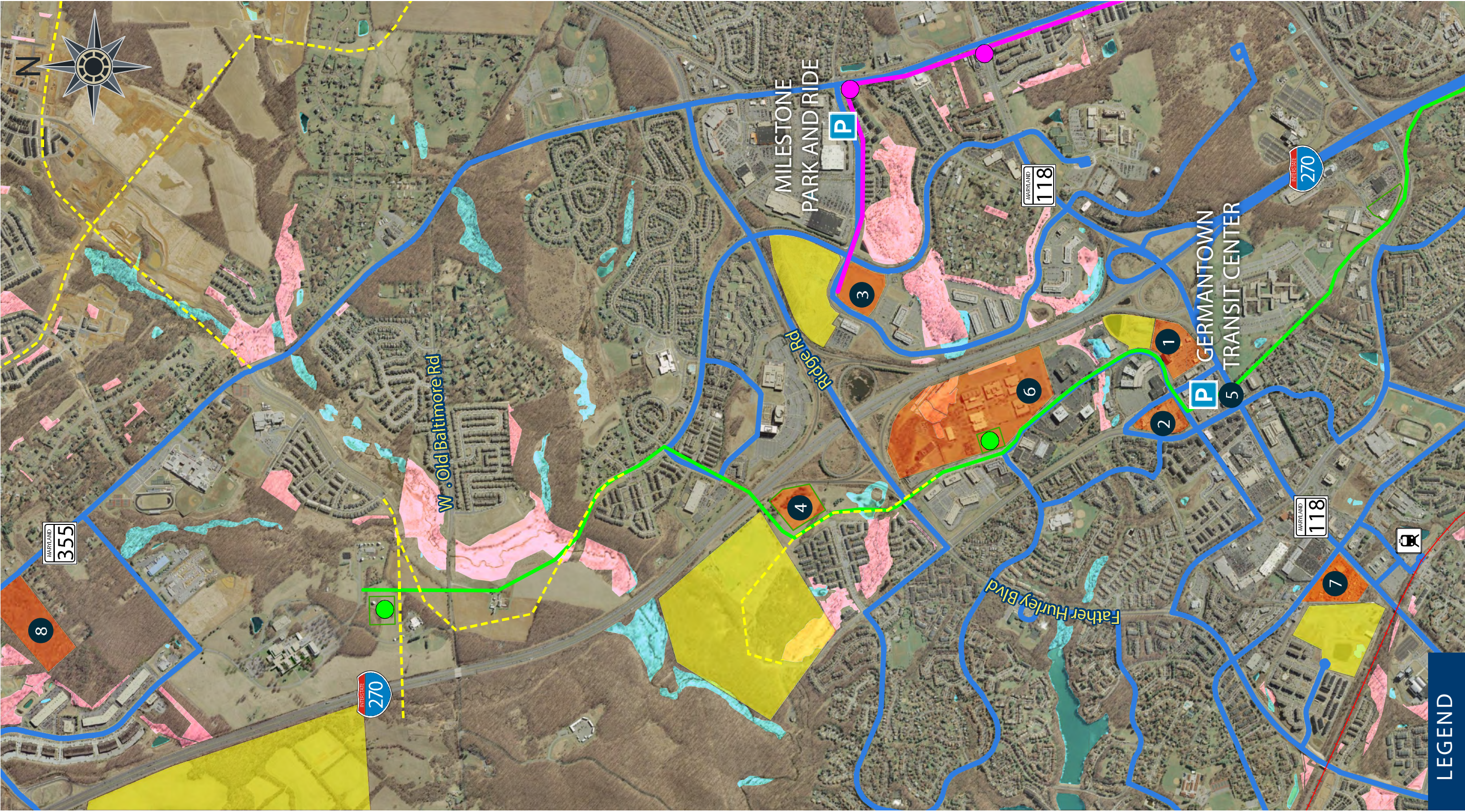
GERMANTOWN TRANSIT CENTER



LEGEND

- | | | | | | |
|-------------------|---------------------------------|--------------------------------------|---------------------|---------------------|--------|
| RIDE ON BUS STOP | PARK AND RIDE LOT | PROPOSED CORRIDOR CITIES TRANSIT WAY | PARCEL BOUNDARY | 500 YEAR FLOODPLAIN | PARK |
| RIDE ON BUS ROUTE | MD INVENTORY OF HISTORIC PLACES | | 100 YEAR FLOODPLAIN | DNR WETLAND | STREAM |

0 125 250 500 Feet



LEGEND

- | | | |
|----------------------------|---------------------|-----------------------|
| ● BRT Stop | ▬ CCT Parking | ■ Development |
| ● CCT Stop | 🚏 MARC Station | ■ Potential Sites |
| — BRT | — MARC Railine | ▨ DNR Wetlands |
| — Germantown Ride On Route | 🅑 Park and Ride Lot | ▨ 100-Year Floodplain |
| — CCT | — Future Road | ■ 500-Year Floodplain |
| | ■ Planned | ■ Forest Conservation |

**Germantown Transit Improvements
Potential Sites for Long-Term (2040) Improvements**

Site Rank	Owner	Total Acre	Current Use	Master Plan Recommendation	Number of Potential Parking Spaces	Number of Potential Bus Bays	Distance from Ex. Center to Proposed Site (Miles)
1	CC 118 LLC	11.64	Open	Unknown	700+	14	0.2
2	Montgomery County	7.12	District 5 Police Station, Volunteer Fire Department	Redevelopment with 2.0 FAR, Potential Mixed Use	600+	14	< 0.1
3	Seneca Meadows Corporate Center VI LLC	11.77	Open - SWM Pond	No change	1000+	14	0.9
4	Oxbridge Dev. At Cloverleaf LC/ Symmetry at Cloverleaf LLC	23.21	Open	CCT Parking Lot	500+	14	1.2
5	Bellemead Development Corp	5.49	Existing Transit Center	No change	600+	14	0
6	Century Technology Campus LLC / 270 B II LLC et All	53.31	N1AD1, Open, Office Buildings	No change / CCT Parking Lot	1000+	14	0.5
7	Chestnut Ridge	10.03	NTB Auto	Unknown	500+	14	0.7
8	Clarksburg Mews LLC	24.36	Farm	Development	1000+	14	3.5