



2015 Chief Officer Meeting

Section Updates

November 7th 2015



Topics

- 
- EMS
 - Fleet
 - PSTA
 - PSL
 - Facilities
 - ECC
- 



- Affordable Health Care Act
- ALS Chase Car's
- Alternative Destination
- Emergency Communications Nurse
- HP CPR





Fleet

FY14

- 3 Engine's

FY15

- 3 Tiller's
- 29 EMS units

FY16

- 2 Towers
- 3 Brush Engines
- 2 Tankers
- 1 Rescue Squad





Yearly

- 1 or 2 aerials
- 12 EMS units
- ~6 Engines

LFRD

- 5 EMS Units
 - A703B, A708C, A741, A742
- Engine 703B, 705
- T715
- AT740
- RS742
- W717
- A705, A729





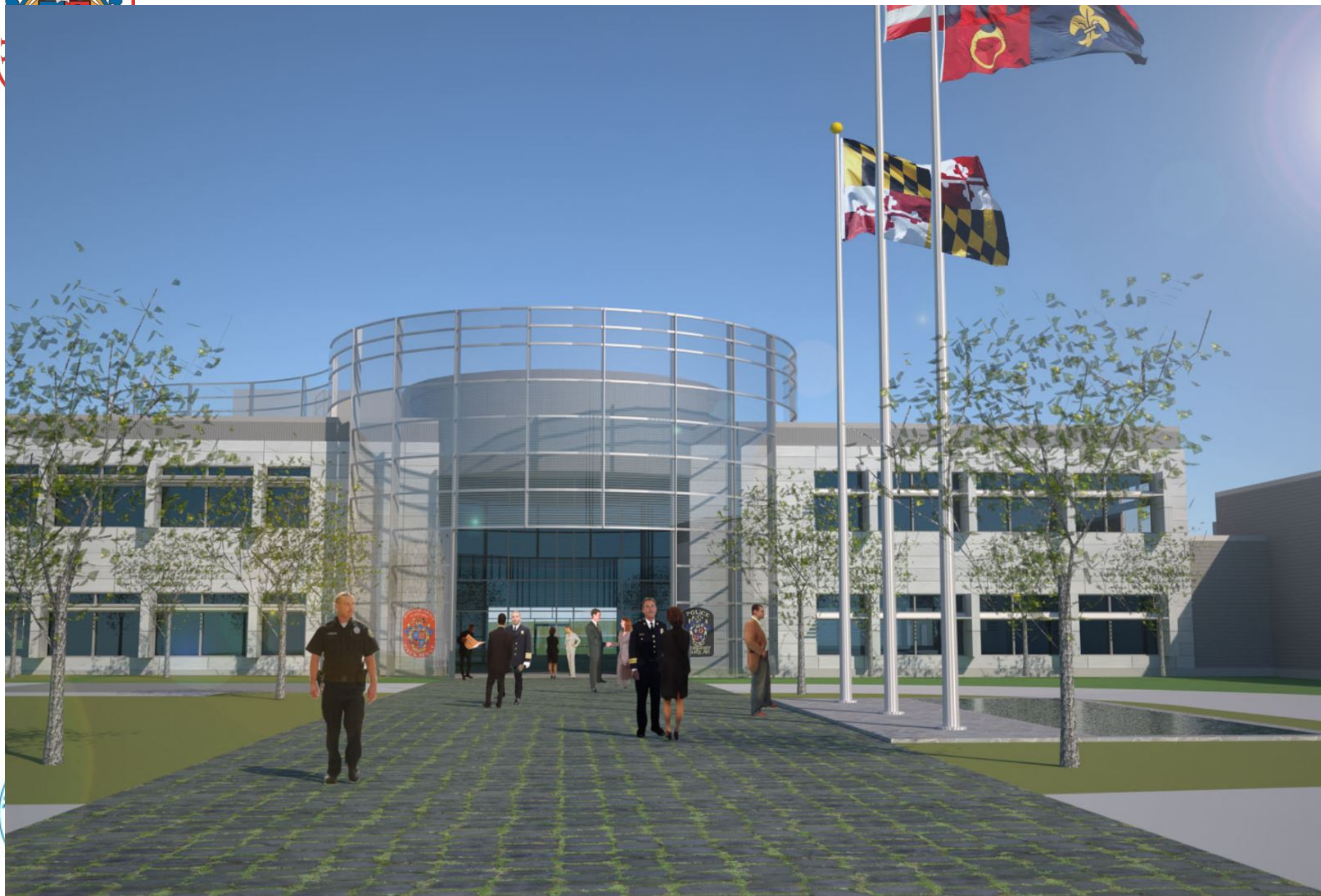
Staff

- FY16 Budget provided 5 additional personnel
 - Fleet Manager
 - Crew Chief
 - 2 Mechanics
 - Part's Technician
- PSL growth





PSTA





Public Safety Logistics (PSL)

- Mid move
 - Fleet Maintenance
 - Fleet Support
 - Property & Supply
 - SCBA Shop
 - EMS Supply
 - Uniform / PPE
 - Radio/MDC support
 - MCP





PSL





Facilities







Facilities

- FS23
 - Design work ongoing

9 to 15 stories





Facilities

- FS35
 - Site Search

Construction in 2018



EAST ELEVATION





Facilities (cont)

- FS36 & FS39
 - FS36 – Shady Grove
 - FS39 – Montgomery Village
 - Submitted for inclusion in Capital Improvement Program
 - Approved by County Executive to a Future Fire Station Program
 - 4 to 6 years + away





- Consolidation
- Civilianization
- New CAD
- New Radio
- New Fire Station Alerting

