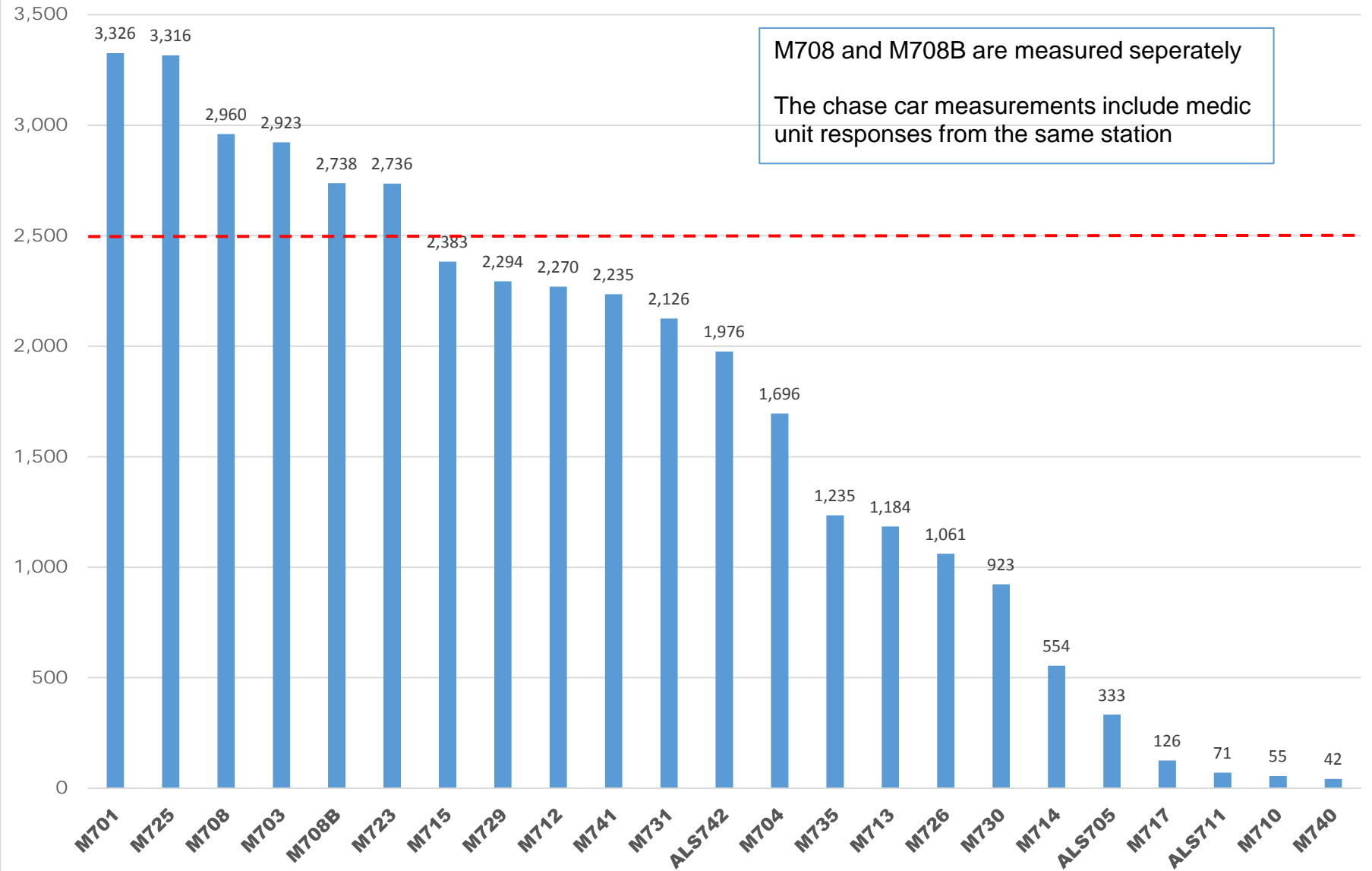


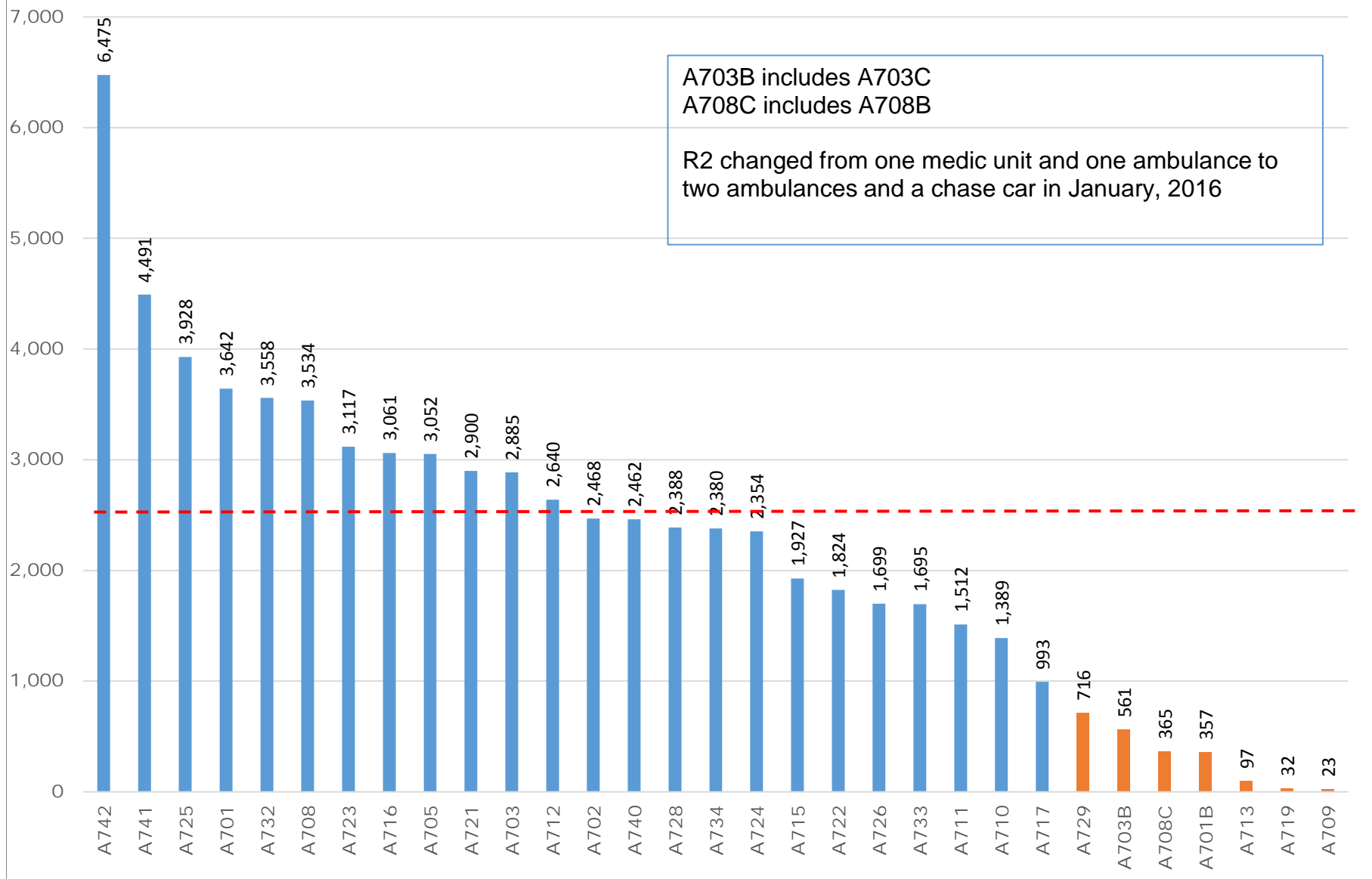
CY2016 Total Responses by Primary Unit Type by Station

All ALS Units: Medic Units and Chase Cars



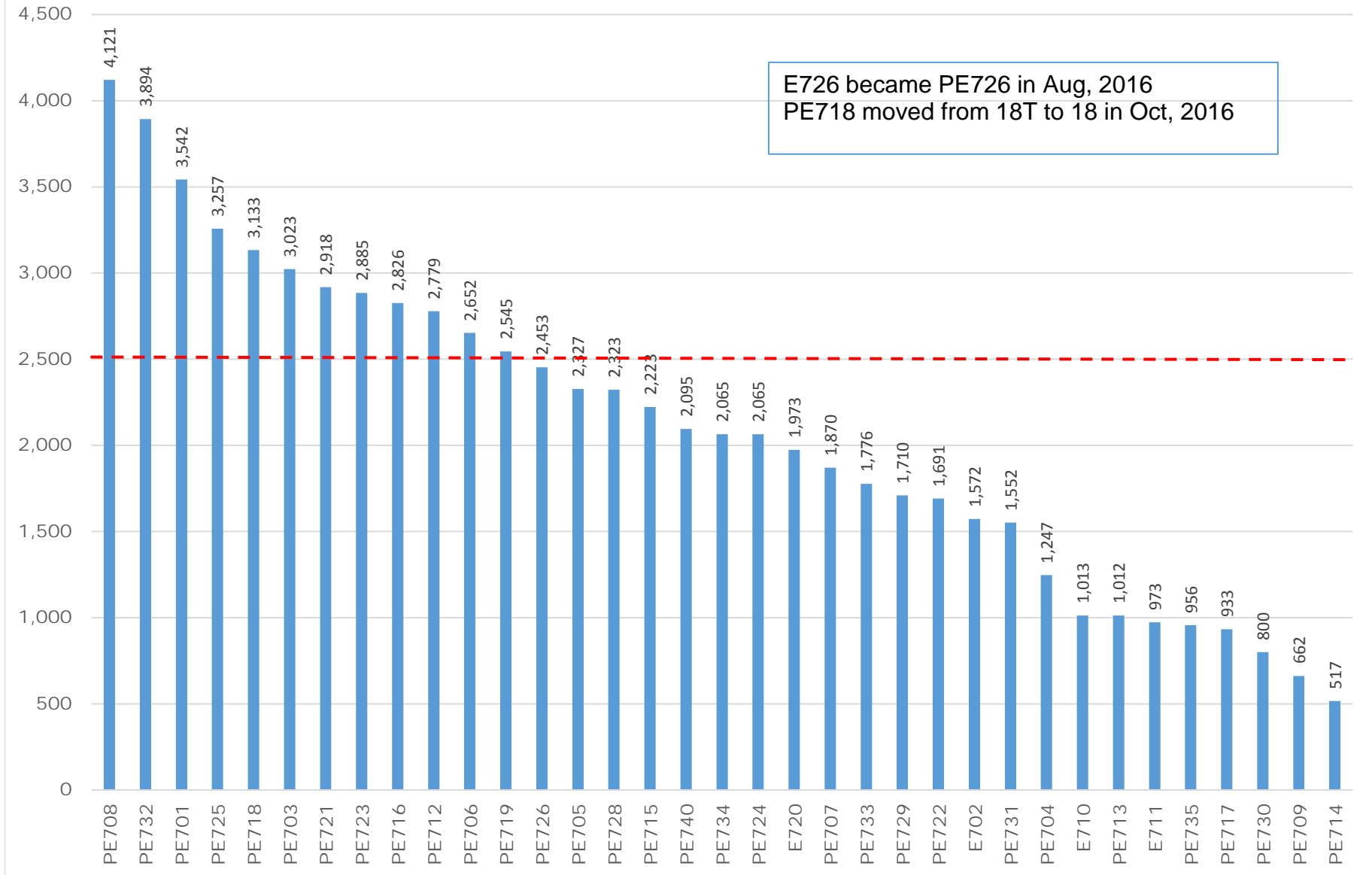
CY2016 Total Responses by Primary Unit Type by Station

All Ambulance Responses



CY2016 Total Responses by Primary Unit Type by Station

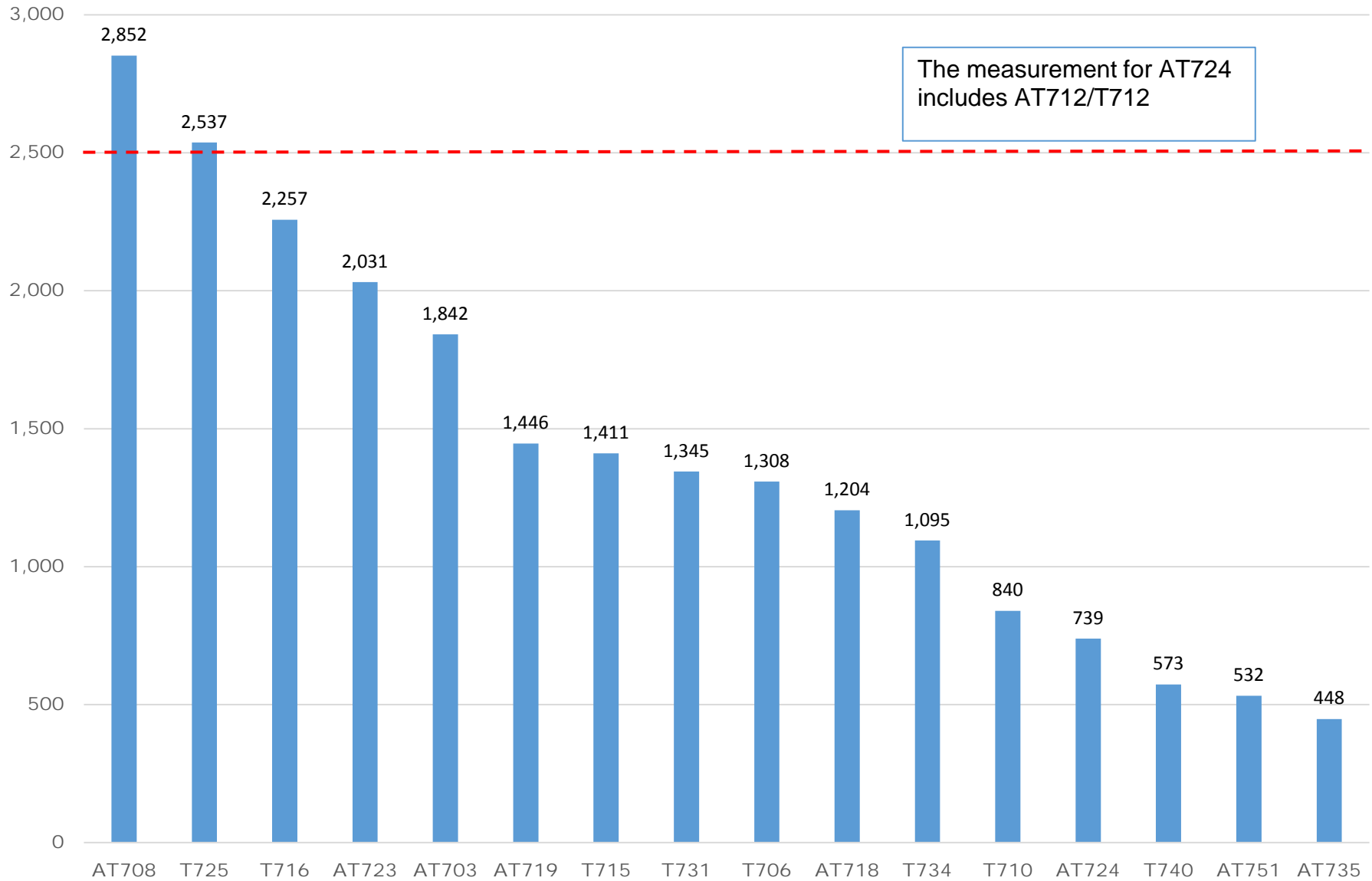
All Engine Responses: E, PE ,RE, BE, Bravo, etc.



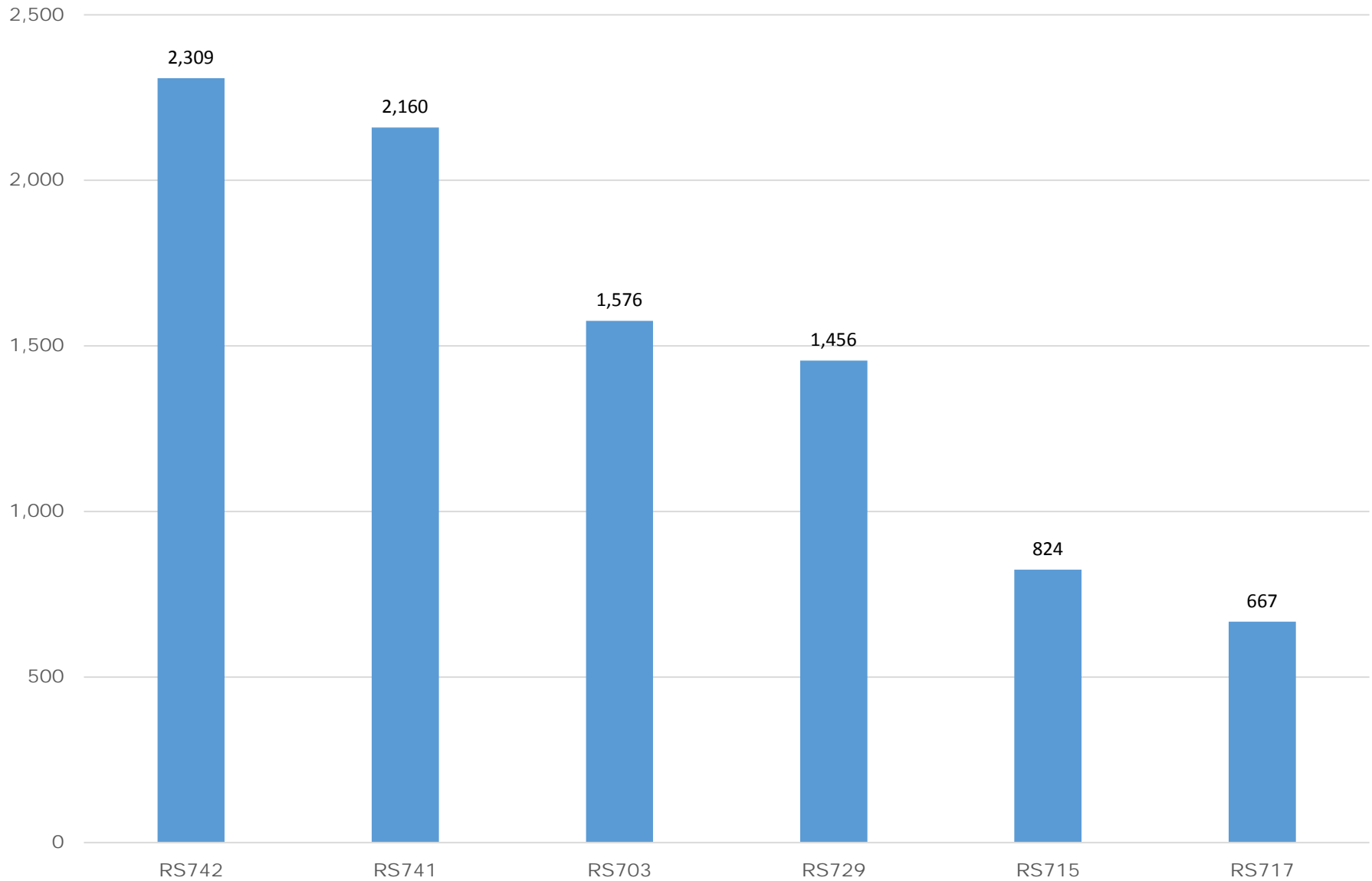
CY2016 Total Responses by Primary Unit Type by Station

All Aerial Responses: T, AT ,PAT, etc.

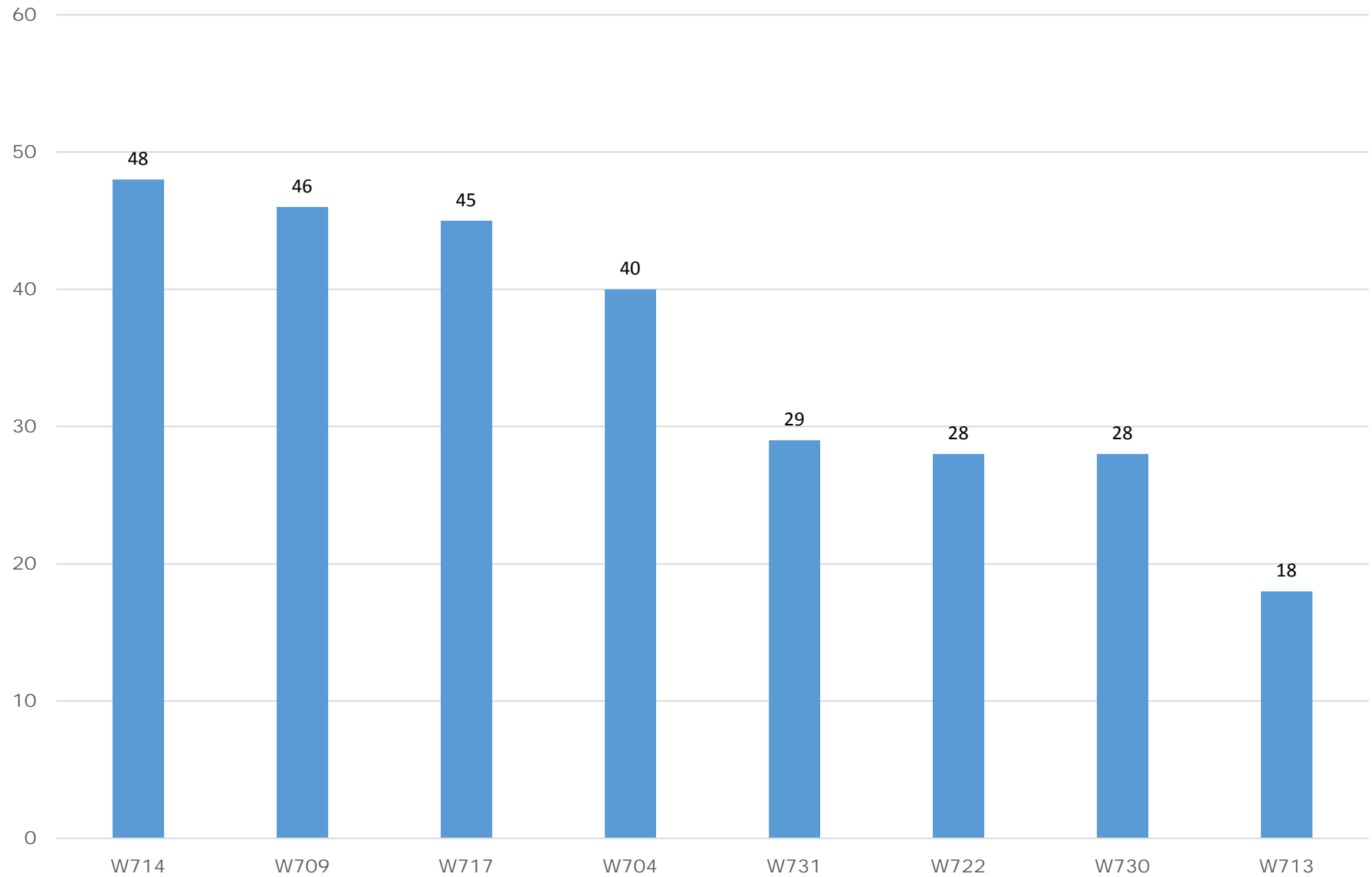
The measurement for AT724 includes AT712/T712



CY2016 Total Responses by Primary Unit Type by Station
All Rescue Squads: RS, PRS, Bravo, etc.



CY2016 Total Responses by Primary Unit Type by Station Tankers



CY2016 Total Responses by Primary Unit Type by Station Command Staff

