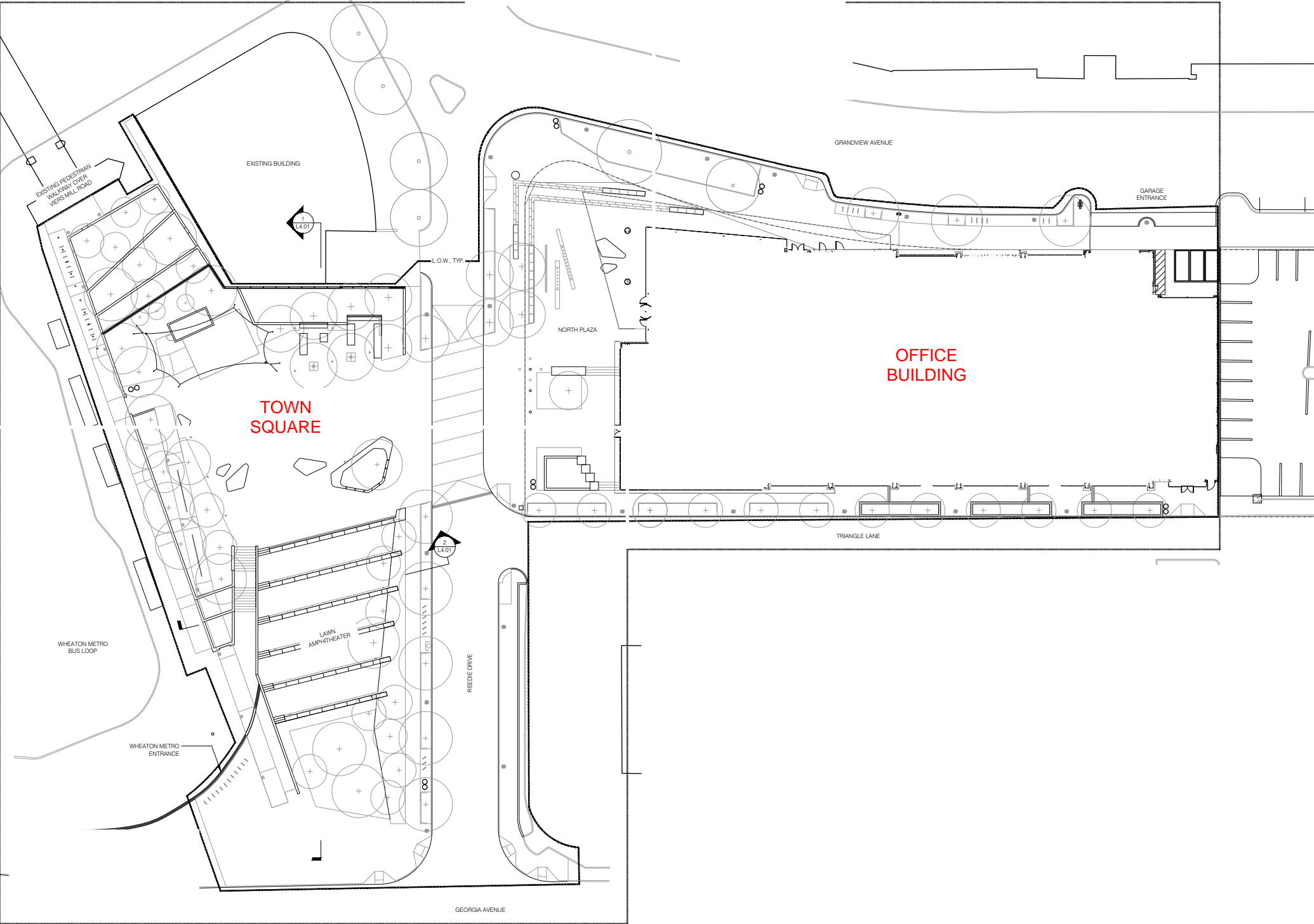


# WUDAC MEETING PRESENTATION - STAGE UPDATE 6/11/2019

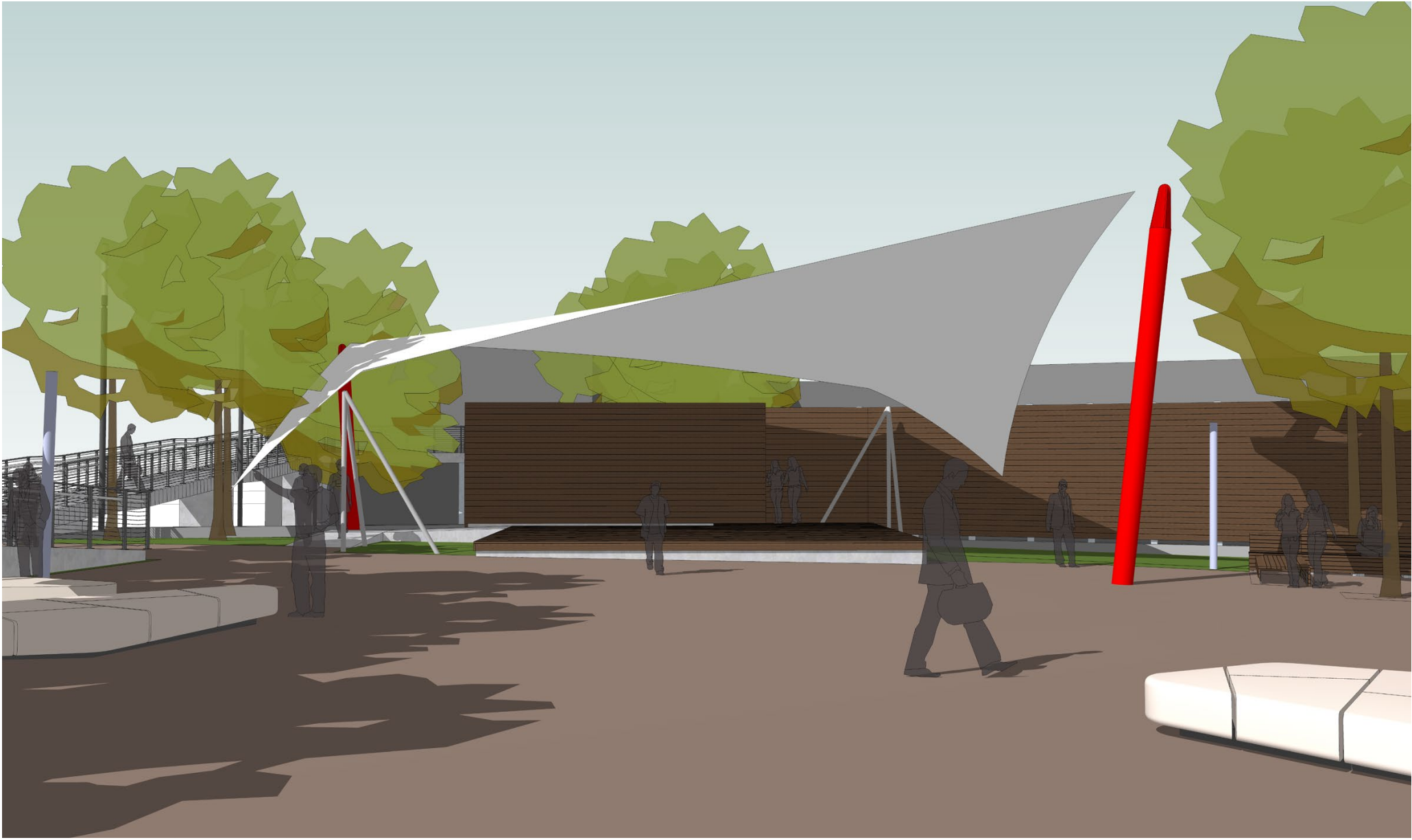




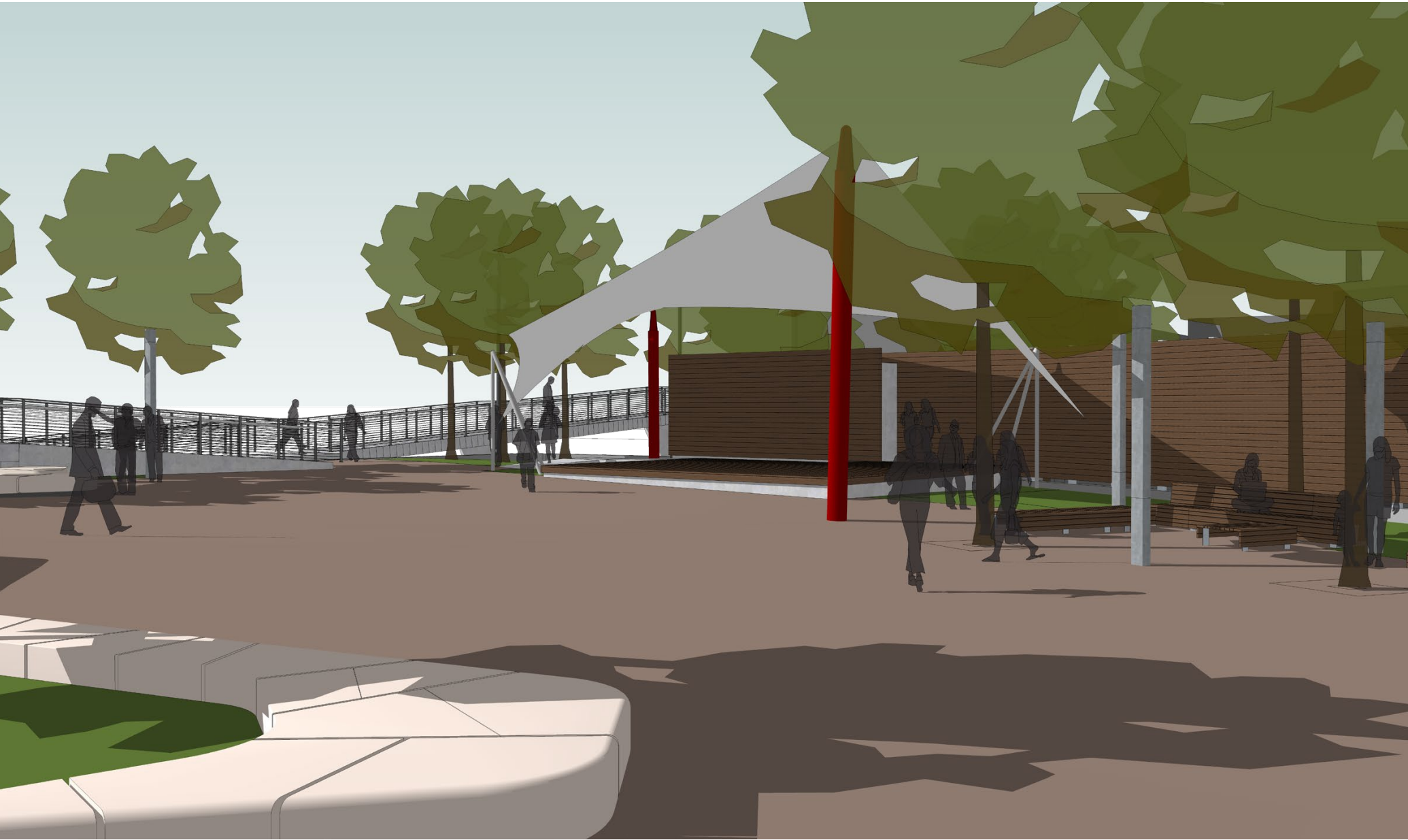
OVERALL SITE PLAN

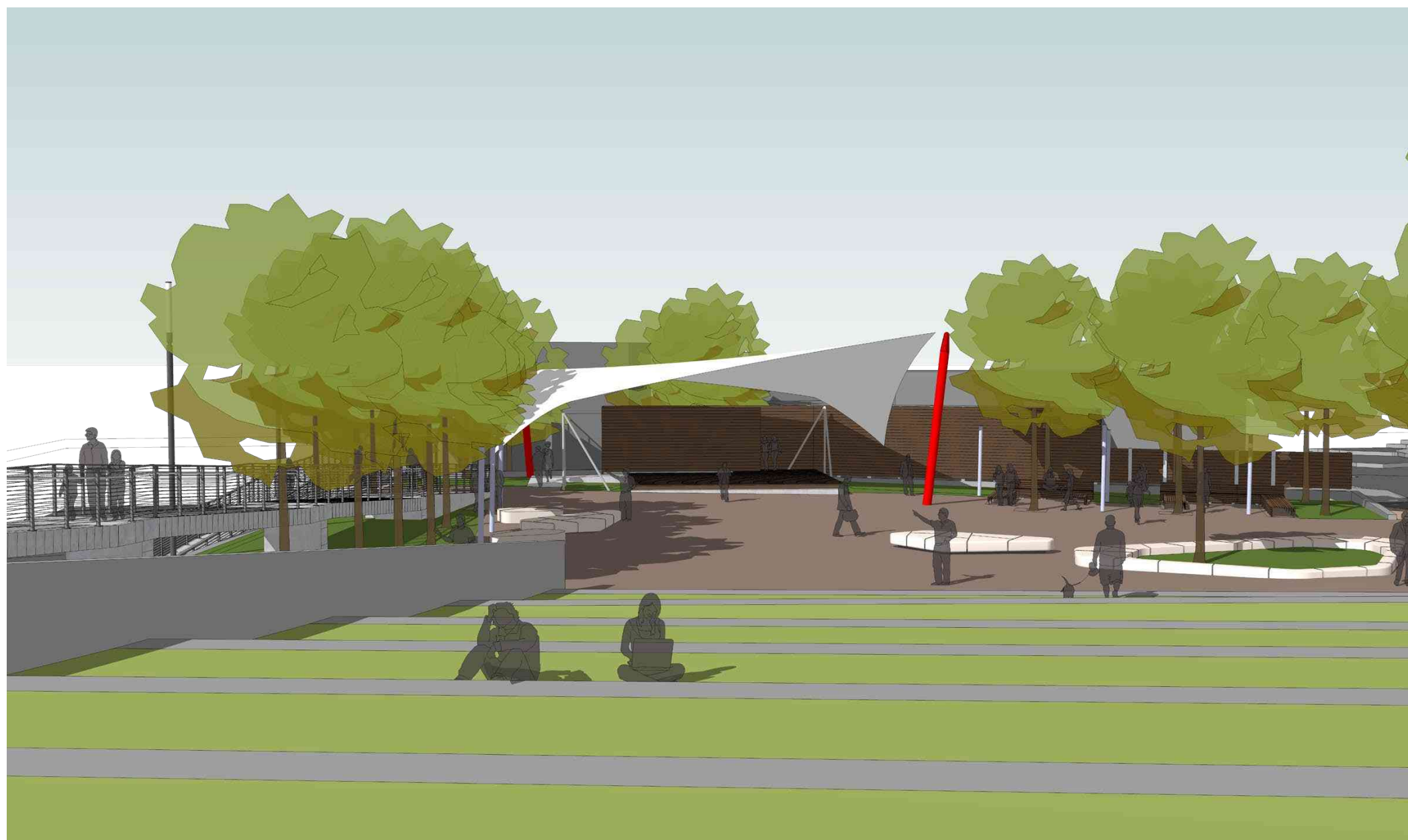














# GENERAL NOTES

## CODES AND SPECIFICATIONS

- 2015 INTERNATIONAL BUILDING CODE
- ASCE 7-10, MINIMUM DESIGN LOADS FOR BUILDINGS AND OTHER STRUCTURES
- ASCE 360-10 CODE OF STANDARD PRACTICE FOR STEEL BUILDINGS AND BRIDGES

## STRUCTURAL STEEL

- MATERIALS:
  - STRUCTURAL STEEL ROUND TUBING, ASTM A-500, GRADE B IFY 42 KSI
  - PLATES ASTM A 572 G 55
  - FLAT BAR, ASTM A 36
  - IF APPLICABLE, HIGH STRENGTH FIELD BOLTS: ASTM A-325, 1/2" MIN. DIA., U.N.O. GALVANIZED
  - MECHANICAL FASTENERS, SS 18-8
- PRIME COAT PAINTING IS REQUIRED FOR ALL STEEL SEE ARCH FOR FINISH

## STEEL FRAMING NOTES

- FIELD VERIFY EXISTING DIMENSIONS AND ELEVATIONS WHICH AFFECT FABRICATION PRIOR TO SUBMITTAL OF SHOP DRAWINGS AND FABRICATION.

## FABRIC NOTES

- FABRIC TO BE FLEXLIGHT XTREM TX30-III AS MANUFACTURED BY FERRARI TEXTILES, SEE MANUFACTURER'S WEB PAGE FOR TECHNICAL DATA. SEE ARCH FOR COLOR.

## STEEL CABLES

- ALL STEEL CABLES TO BE 6X19 1/8", WITH THREADED STUD ENDS AS MANUFACTURED BY MUNCY INDUSTRIES OR SIMILAR.
- ALL STRAND CABLES TO BE GALVANIZED STRUCTURAL STRAND ASTM A586 WITH OPEN STRAND SPLICER SOCKETS ASTM A148 OR SIMILAR.

## HARDWARE FITTINGS

- ALL ANCHOR SHACKLES SHALL BE CROSBY BOLT TYPE G-2130 OR SIMILAR.
- ALL TURNBUCKLES AND / OR TERMINAL ENDS SHALL BE CROSBY HS-228 JAW-JAW OR SIMILAR.

## DESIGN LOADS

- CATEGORY OF BUILDING II
- ROOF LOAD:
  - ROOF LIVE LOAD, MINIMUM 0 PSF
  - SNOW LOAD:
    - GROUND SNOW LOAD: PG + 30 PSF
- WIND LOAD:
  - BASIC WIND SPEED (ULTIMATE 3-SECOND GUST): 115 MPH
  - WIND EXPOSURE: C
  - Kz = 0.85
  - Kzt = 1.0
  - Rg = 0.85
  - G = 0.85

## FABRICATION AND INSTALLATION

- ALL DIMENSIONS, HEIGHTS AND ORIENTATION TO TRUE OR PLAN NORTH, SHALL BE VERIFIED ON THE FIELD, PRIOR TO COMMENCEMENT OF ANY FABRICATION OR INSTALLATION OPERATIONS.

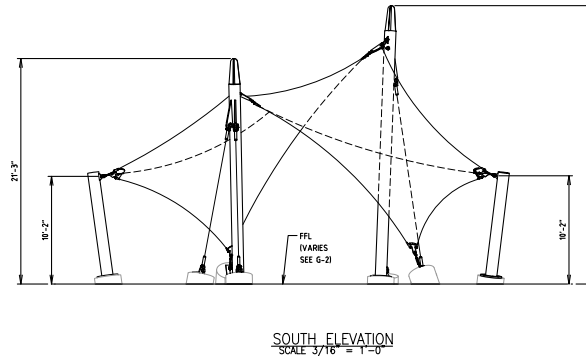
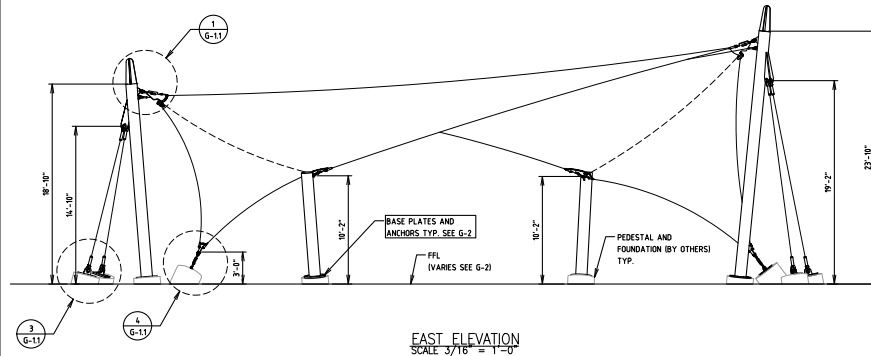
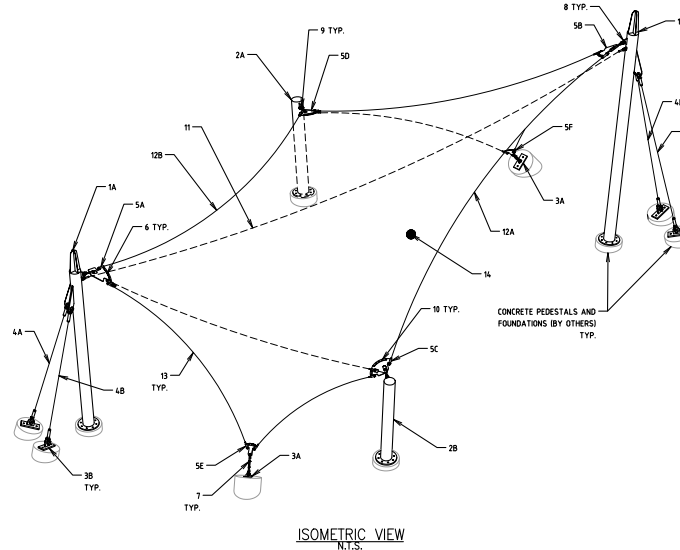
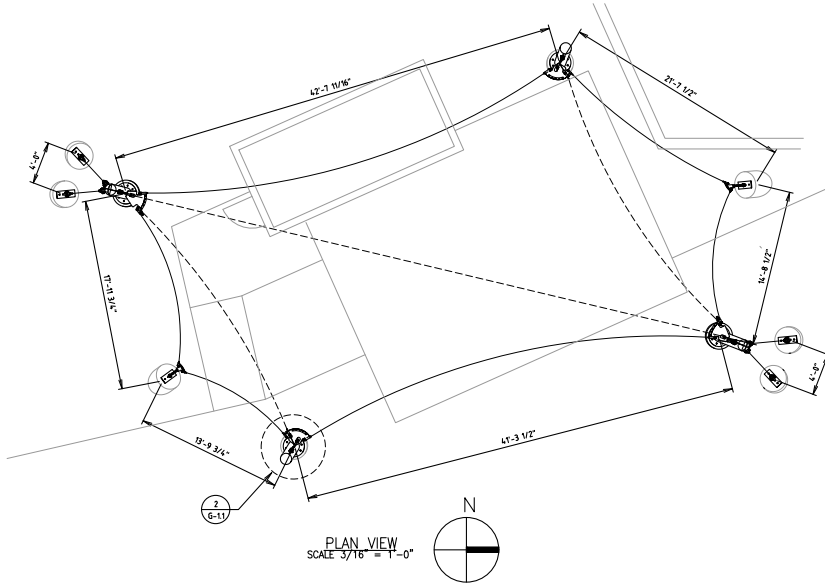
## LOADS AND REACTIONS

- REFER TO CALCULATION REPORT FOR LOADS AND REACTIONS AT COLUMN BASES FOR FURTHER ANALYSIS OF SUPPORT STRUCTURES, BY OTHERS.

## LIST OF MATERIALS

ITEM	DESCRIPTION	QTY	MATERIAL / SHAPE
1A	TALL COLUMN A	1	HSS 12.75 X 0.375
1B	TALL COLUMN B	1	HSS 12.75 X 0.375
2A	SHORT COLUMN A	1	HSS 12.75 X 0.375
2B	SHORT COLUMN B	1	HSS 12.75 X 0.375
3A	WING CABLE PLATE	2	SEE DETAIL
3B	MAST CABLE PLATE	2	SEE DETAIL
4	TYE STRAND CABLE	4	1 1/4" STRAND (LENGTH VARIES)
5	MEMBRANE PLATES	6	1/2" PLATE (SHAPE VARIES)
6	CLAMP BARS	10	3/8" PLATE (SHAPE VARIES)
7	TURNBUCKLE	2	1" X 6" JAW-JAW
8	ANCHOR SHACKLE	4	3/4"
9	JAW END	4	1" X 12" JAW
10	CLAMP BAR HEX BOLT SET	34	1/2-19NC X 2" SS 18-8
11	LONG RIDGE CABLE	1	3/4" 1/8"RC CABLE
12	LONG EDGE CABLE	2	5/8" 1/8"RC CABLE (LENGTH VARIES)
13	CATERNARY AND SHORT RIDGE CABLE	6	1/2" 1/8"RC CABLE (LENGTH VARIES)
14	FABRIC TOP	1	PVC COATED POLYESTER

- ALL HEX BOLT SETS INCLUDE: HEX BOLT, HEX NUT, 2 FLAT WASHERS, 1 SPLIT LOCK WASHER
- JAW END INCLUDES FLAT WASHER, HVY HEX NUT AND JAW NUT
- ALL TURNBUCKLES INCLUDE TWO JAW NUTS
- ALL STUD END CABLES INCLUDE HEX NUT, JAW NUT AND FLAT WASHER



FOR PERMIT ONLY, NOT  
FOR CONSTRUCTION

DRAFT

REV DATE REVISION DRW CHK APP

CLIENT

FabricArchitect  
Architectural fabric structures

ROCKY SUMMIT  
ENGINEERING CONSULTING, LLC.

TBPE FIRM #: 14437

PROJECT

WHEATON STAGE  
CANOPY

LOCATION

2425 REEDIE DR.  
SILVER SPRING, MD, 20902

DRAWING TITLE:

TENSILE STRUCTURE  
GENERAL VIEWS

Drawn Date MEX 05/28/19	Check Date FPRE 05/28/19	App. Date FPRE 05/29/19
Project Number 0499	SCALE AS NOTED	Dwg Sheet Size D

Drawing No. WHE-G-1	REV
------------------------	-----