

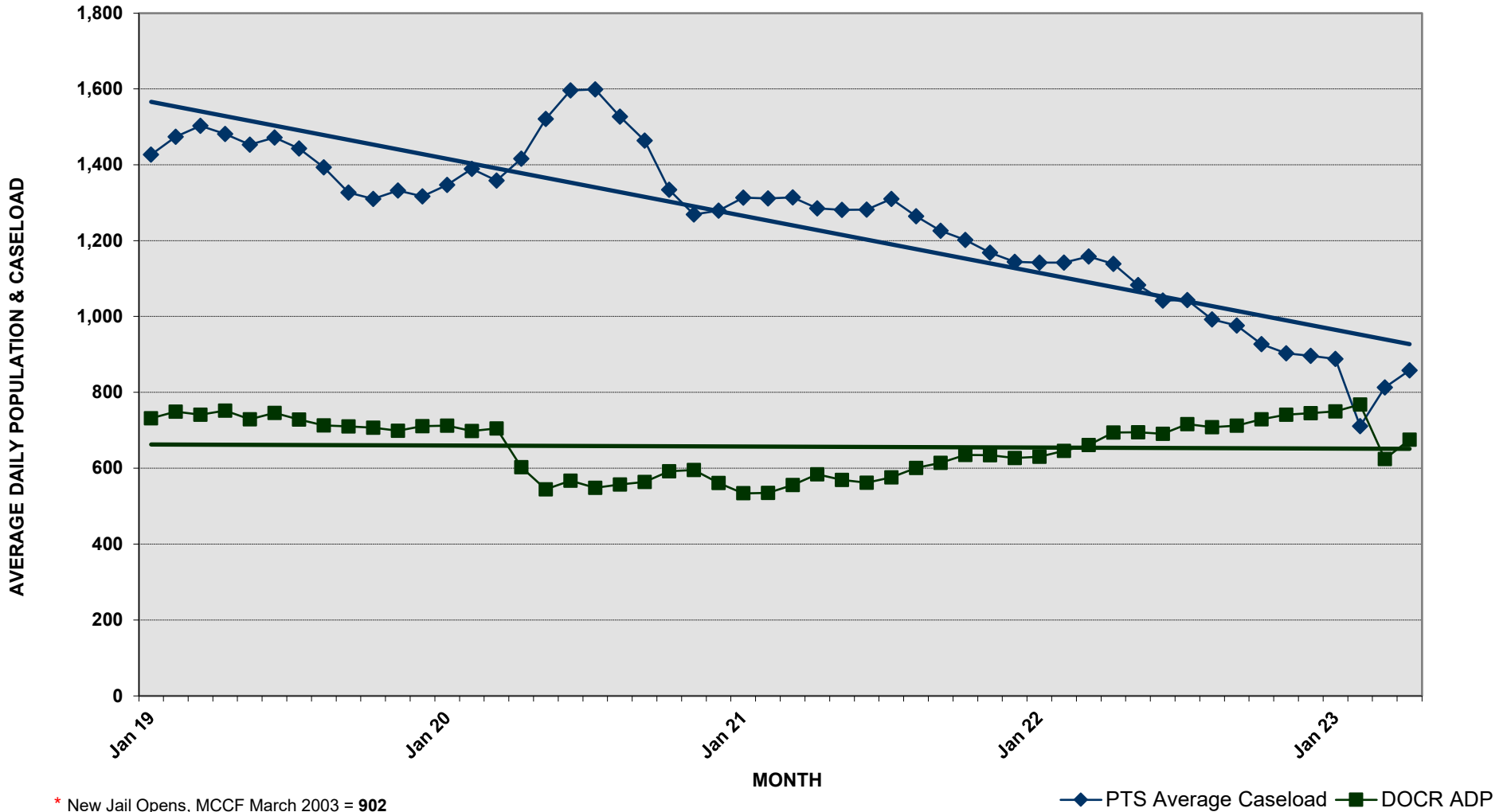


# DEPARTMENT OF CORRECTION AND REHABILITATION

## PRE-TRIAL AVERAGE DAILY CASELOAD \*

### DETENTION SERVICES AND PRE-RELEASE AVERAGE DAILY POPULATION

JANUARY 1, 2019 - APRIL 30, 2023



\* New Jail Opens, MCCF March 2003 = 902  
 \* PTS Average Caseload -Number of Criminal Justice Clients under Pre-Trial Services (ACS, IPSA, PTSU)



**DEPARTMENT OF CORRECTION AND REHABILITATION  
PRE-TRIAL AVERAGE DAILY CASELOAD\*  
DETENTION SERVICES AND PRE-RELEASE AVERAGE DAILY POPULATION  
JANUARY 2019 - PRESENT**

**YEAR 2019**

DIVISION	JAN	FEB	MAR	APR	MAY	JUN	JUL	AUG	SEP	OCT	NOV	DEC	19
MCDC	58	62	61	59	55	63	56	52	54	47	59	48	56
PRRS	115	112	107	99	101	104	98	97	97	99	100	99	102
MCCF	559	575	573	594	573	579	574	564	559	561	540	564	568
<b>Average (ADP)</b>	<b>732</b>	<b>749</b>	<b>741</b>	<b>752</b>	<b>729</b>	<b>746</b>	<b>728</b>	<b>713</b>	<b>710</b>	<b>707</b>	<b>699</b>	<b>711</b>	<b>726</b>
<b>PTS Average Caseload</b>	<b>1,427</b>	<b>1,474</b>	<b>1,503</b>	<b>1,481</b>	<b>1,453</b>	<b>1,472</b>	<b>1,443</b>	<b>1,393</b>	<b>1,327</b>	<b>1,310</b>	<b>1,332</b>	<b>1,317</b>	<b>1,411</b>

**YEAR 2020**

DIVISION	JAN	FEB	MAR	APR	MAY	JUN	JUL	AUG	SEP	OCT	NOV	DEC	20
MCDC	58	55	46	45	54	63	55	59	60	70	65	47	56
PRRS	97	107	114	67	29	16	0	0	0	0	0	0	72
MCCF	557	536	545	491	461	488	493	498	504	522	530	514	512
<b>Average (ADP)</b>	<b>712</b>	<b>698</b>	<b>705</b>	<b>603</b>	<b>544</b>	<b>567</b>	<b>548</b>	<b>557</b>	<b>564</b>	<b>592</b>	<b>595</b>	<b>561</b>	<b>604</b>
<b>PTS Average Caseload</b>	<b>1,347</b>	<b>1,389</b>	<b>1,358</b>	<b>1,416</b>	<b>1,521</b>	<b>1,596</b>	<b>1,599</b>	<b>1,527</b>	<b>1,464</b>	<b>1,334</b>	<b>1,269</b>	<b>1,279</b>	<b>1,425</b>

**YEAR 2021**

DIVISION	JAN	FEB	MAR	APR	MAY	JUN	JUL	AUG	SEP	OCT	NOV	DEC	21
MCDC	53	50	51	46	53	53	50	48	53	49	51	41	50
PRRS	0	0	0	0	0	0	0	0	0	0	0	0	0
MCCF	481	485	505	538	516	509	526	553	561	586	583	586	536
<b>Average (ADP)</b>	<b>534</b>	<b>535</b>	<b>556</b>	<b>584</b>	<b>569</b>	<b>562</b>	<b>576</b>	<b>601</b>	<b>614</b>	<b>635</b>	<b>634</b>	<b>627</b>	<b>586</b>
<b>PTS Average Caseload</b>	<b>1,313</b>	<b>1,311</b>	<b>1,314</b>	<b>1,285</b>	<b>1,281</b>	<b>1,282</b>	<b>1,310</b>	<b>1,264</b>	<b>1,226</b>	<b>1,202</b>	<b>1,168</b>	<b>1,144</b>	<b>1,258</b>

**YEAR 2022**

DIVISION	JAN	FEB	MAR	APR	MAY	JUN	JUL	AUG	SEP	OCT	NOV	DEC	22
MCDC	43	46	39	42	48	51	52	40	41	54	58	63	48
PRRS	0	0	0	0	0	0	0	0	0	0	0	0	0
MCCF	587	600	622	652	647	640	664	668	671	675	683	682	649
<b>Average (ADP)</b>	<b>630</b>	<b>646</b>	<b>661</b>	<b>694</b>	<b>695</b>	<b>691</b>	<b>716</b>	<b>708</b>	<b>712</b>	<b>729</b>	<b>741</b>	<b>745</b>	<b>697</b>
<b>PTS Average Caseload</b>	<b>1,142</b>	<b>1,142</b>	<b>1,158</b>	<b>1,139</b>	<b>1,083</b>	<b>1,042</b>	<b>1,043</b>	<b>992</b>	<b>976</b>	<b>927</b>	<b>903</b>	<b>896</b>	<b>1,037</b>

**YEAR 2023**

DIVISION	JAN	FEB	MAR	* APR	MAY	JUN	JUL	AUG	SEP	OCT	NOV	DEC	23
MCDC	65	63	87	103									80
PRRS	0	0	0	15									15
MCCF	685	705	726	740									714
<b>Average (ADP)</b>	<b>750</b>	<b>768</b>	<b>813</b>	<b>858</b>	<b>0</b>	<b>0</b>	<b>0</b>	<b>0</b>	<b>0</b>	<b>0</b>	<b>0</b>	<b>0</b>	<b>797</b>
<b>PTS Average Caseload</b>	<b>888</b>	<b>711</b>	<b>624</b>	<b>675</b>									<b>725</b>

\*\*ADP\*\* - Average Daily Population (Include Weekenders)

\*\*PTS Average Caseload\*\* - Number of Criminal Justice Clients under Pre-Trial Services (ACS, IPSA, PTSU)

\*\*Due to COVID, PRRS did not have any residents from JULY 2020 - APRIL 15, 2023. The facility opened on APRIL 16, 2023

\* April 1, 2023 - April 30, 2023