

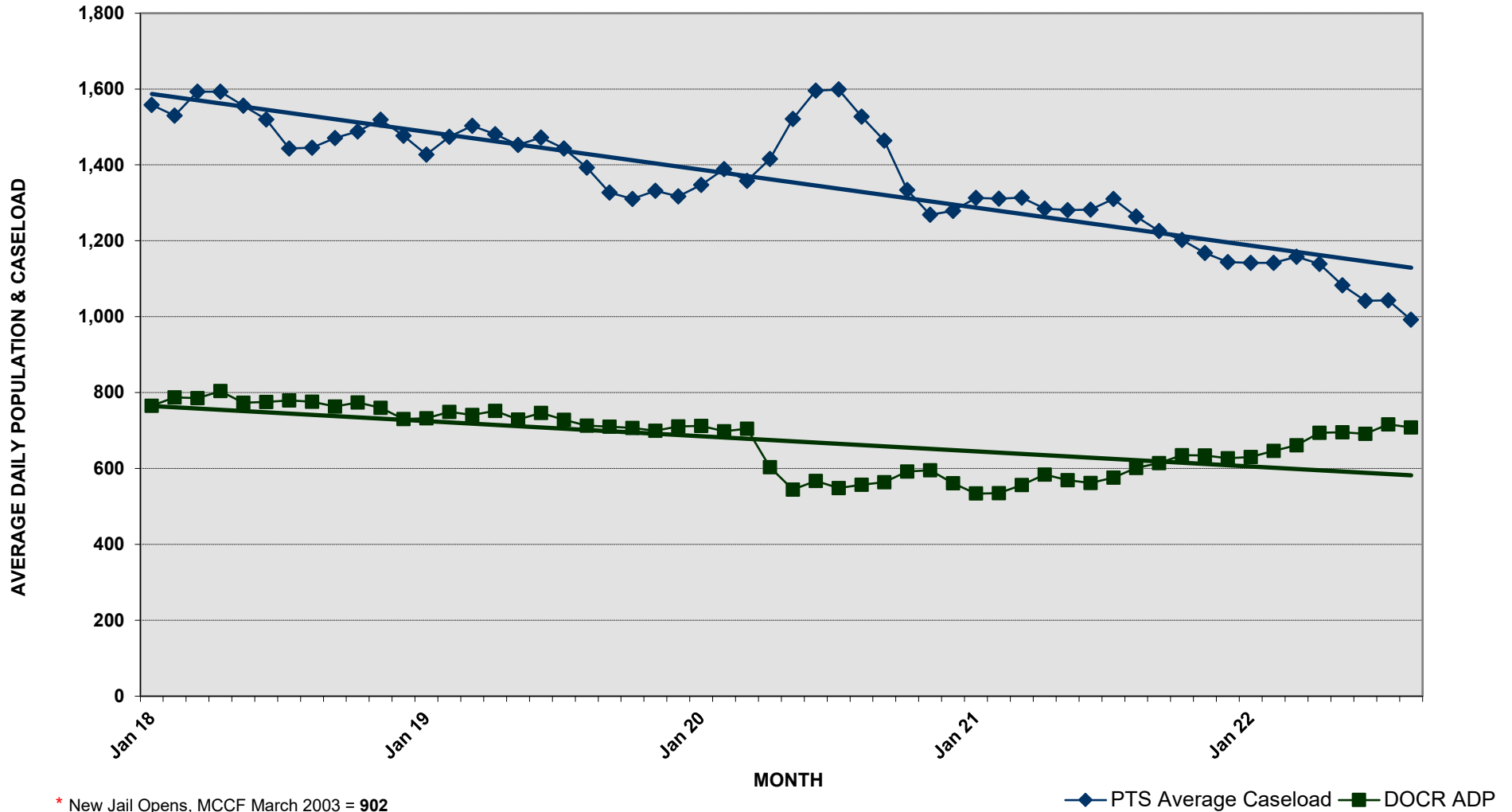


# DEPARTMENT OF CORRECTION AND REHABILITATION

## PRE-TRIAL AVERAGE DAILY CASELOAD \*

### DETENTION SERVICES AND PRE-RELEASE AVERAGE DAILY POPULATION

#### JANUARY 1, 2018 - AUGUST 31, 2022



\* New Jail Opens, MCCF March 2003 = 902

\* PTS Average Caseload -Number of Criminal Justice Clients under Pre-Trial Services (ACS, IPSA, PTSU)



**DEPARTMENT OF CORRECTION AND REHABILITATION  
PRE-TRIAL AVERAGE DAILY CASELOAD\*  
DETENTION SERVICES AND PRE-RELEASE AVERAGE DAILY POPULATION  
JANUARY 2018 - PRESENT**

**YEAR 2018**

<b>DIVISION</b>	<b>JAN</b>	<b>FEB</b>	<b>MAR</b>	<b>APR</b>	<b>MAY</b>	<b>JUN</b>	<b>JUL</b>	<b>AUG</b>	<b>SEP</b>	<b>OCT</b>	<b>NOV</b>	<b>DEC</b>	<b>18</b>
MCDC	59	61	56	61	55	52	54	51	65	58	50	57	<b>57</b>
PRRS	113	116	119	119	110	110	108	112	111	120	116	112	<b>114</b>
MCCF	593	610	610	624	608	613	617	613	587	596	594	561	<b>602</b>
<b>Average (ADP)</b>	<b>765</b>	<b>787</b>	<b>785</b>	<b>804</b>	<b>773</b>	<b>775</b>	<b>779</b>	<b>776</b>	<b>763</b>	<b>774</b>	<b>760</b>	<b>730</b>	<b>773</b>
<b>PTS Average Caseload</b>	<b>1,558</b>	<b>1,530</b>	<b>1,593</b>	<b>1,593</b>	<b>1,556</b>	<b>1,520</b>	<b>1,443</b>	<b>1,445</b>	<b>1,471</b>	<b>1,488</b>	<b>1,519</b>	<b>1,477</b>	<b>1,516</b>

**YEAR 2019**

<b>DIVISION</b>	<b>JAN</b>	<b>FEB</b>	<b>MAR</b>	<b>APR</b>	<b>MAY</b>	<b>JUN</b>	<b>JUL</b>	<b>AUG</b>	<b>SEP</b>	<b>OCT</b>	<b>NOV</b>	<b>DEC</b>	<b>19</b>
MCDC	58	62	61	59	55	63	56	52	54	47	59	48	<b>56</b>
PRRS	115	112	107	99	101	104	98	97	97	99	100	99	<b>102</b>
MCCF	559	575	573	594	573	579	574	564	559	561	540	564	<b>568</b>
<b>Average (ADP)</b>	<b>732</b>	<b>749</b>	<b>741</b>	<b>752</b>	<b>729</b>	<b>746</b>	<b>728</b>	<b>713</b>	<b>710</b>	<b>707</b>	<b>699</b>	<b>711</b>	<b>726</b>
<b>PTS Average Caseload</b>	<b>1,427</b>	<b>1,474</b>	<b>1,503</b>	<b>1,481</b>	<b>1,453</b>	<b>1,472</b>	<b>1,443</b>	<b>1,393</b>	<b>1,327</b>	<b>1,310</b>	<b>1,332</b>	<b>1,317</b>	<b>1,411</b>

**YEAR 2020**

<b>DIVISION</b>	<b>JAN</b>	<b>FEB</b>	<b>MAR</b>	<b>APR</b>	<b>MAY</b>	<b>JUN</b>	<b>JUL</b>	<b>AUG</b>	<b>SEP</b>	<b>OCT</b>	<b>NOV</b>	<b>DEC</b>	<b>20</b>
MCDC	58	55	46	45	54	63	55	59	60	70	65	47	<b>56</b>
PRRS	97	107	114	67	29	16	0	0	0	0	0	0	<b>72</b>
MCCF	557	536	545	491	461	488	493	498	504	522	530	514	<b>512</b>
<b>Average (ADP)</b>	<b>712</b>	<b>698</b>	<b>705</b>	<b>603</b>	<b>544</b>	<b>567</b>	<b>548</b>	<b>557</b>	<b>564</b>	<b>592</b>	<b>595</b>	<b>561</b>	<b>604</b>
<b>PTS Average Caseload</b>	<b>1,347</b>	<b>1,389</b>	<b>1,358</b>	<b>1,416</b>	<b>1,521</b>	<b>1,596</b>	<b>1,599</b>	<b>1,527</b>	<b>1,464</b>	<b>1,334</b>	<b>1,269</b>	<b>1,279</b>	<b>1,425</b>

**YEAR 2021**

<b>DIVISION</b>	<b>JAN</b>	<b>FEB</b>	<b>MAR</b>	<b>APR</b>	<b>MAY</b>	<b>JUN</b>	<b>JUL</b>	<b>AUG</b>	<b>SEP</b>	<b>OCT</b>	<b>NOV</b>	<b>DEC</b>	<b>21</b>
MCDC	53	50	51	46	53	53	50	48	53	49	51	41	<b>50</b>
PRRS	0	0	0	0	0	0	0	0	0	0	0	0	<b>0</b>
MCCF	481	485	505	538	516	509	526	553	561	586	583	586	<b>536</b>
<b>Average (ADP)</b>	<b>534</b>	<b>535</b>	<b>556</b>	<b>584</b>	<b>569</b>	<b>562</b>	<b>576</b>	<b>601</b>	<b>614</b>	<b>635</b>	<b>634</b>	<b>627</b>	<b>586</b>
<b>PTS Average Caseload</b>	<b>1,313</b>	<b>1,311</b>	<b>1,314</b>	<b>1,285</b>	<b>1,281</b>	<b>1,282</b>	<b>1,310</b>	<b>1,264</b>	<b>1,226</b>	<b>1,202</b>	<b>1,168</b>	<b>1,144</b>	<b>1,258</b>

**YEAR 2022**

<b>DIVISION</b>	<b>JAN</b>	<b>FEB</b>	<b>MAR</b>	<b>APR</b>	<b>MAY</b>	<b>JUN</b>	<b>JUL</b>	<b>* AUG</b>	<b>SEP</b>	<b>OCT</b>	<b>NOV</b>	<b>DEC</b>	<b>22</b>
MCDC	43	46	39	42	48	51	52	40					<b>45</b>
PRRS	0	0	0	0	0	0	0	0					<b>0</b>
MCCF	587	600	622	652	647	640	664	668					<b>635</b>
<b>Average (ADP)</b>	<b>630</b>	<b>646</b>	<b>661</b>	<b>694</b>	<b>695</b>	<b>691</b>	<b>716</b>	<b>708</b>	<b>0</b>	<b>0</b>	<b>0</b>	<b>0</b>	<b>680</b>
<b>PTS Average Caseload</b>	<b>1,142</b>	<b>1,142</b>	<b>1,158</b>	<b>1,139</b>	<b>1,083</b>	<b>1,042</b>	<b>1,043</b>	<b>992</b>	<b>0</b>	<b>0</b>	<b>0</b>	<b>0</b>	<b>1,093</b>

\*\*ADP\*\* - Average Daily Population (Include Weekenders)

\*\*PTS Average Caseload\*\* - Number of Criminal Justice Clients under Pre-Trial Services (ACS, IPSA, PTSU)

\*\*Due to COVID, PRRS did not have any residents from JULY 2020 - AUGUST 2022.

\*July 1, 2022 - August 31, 2022