

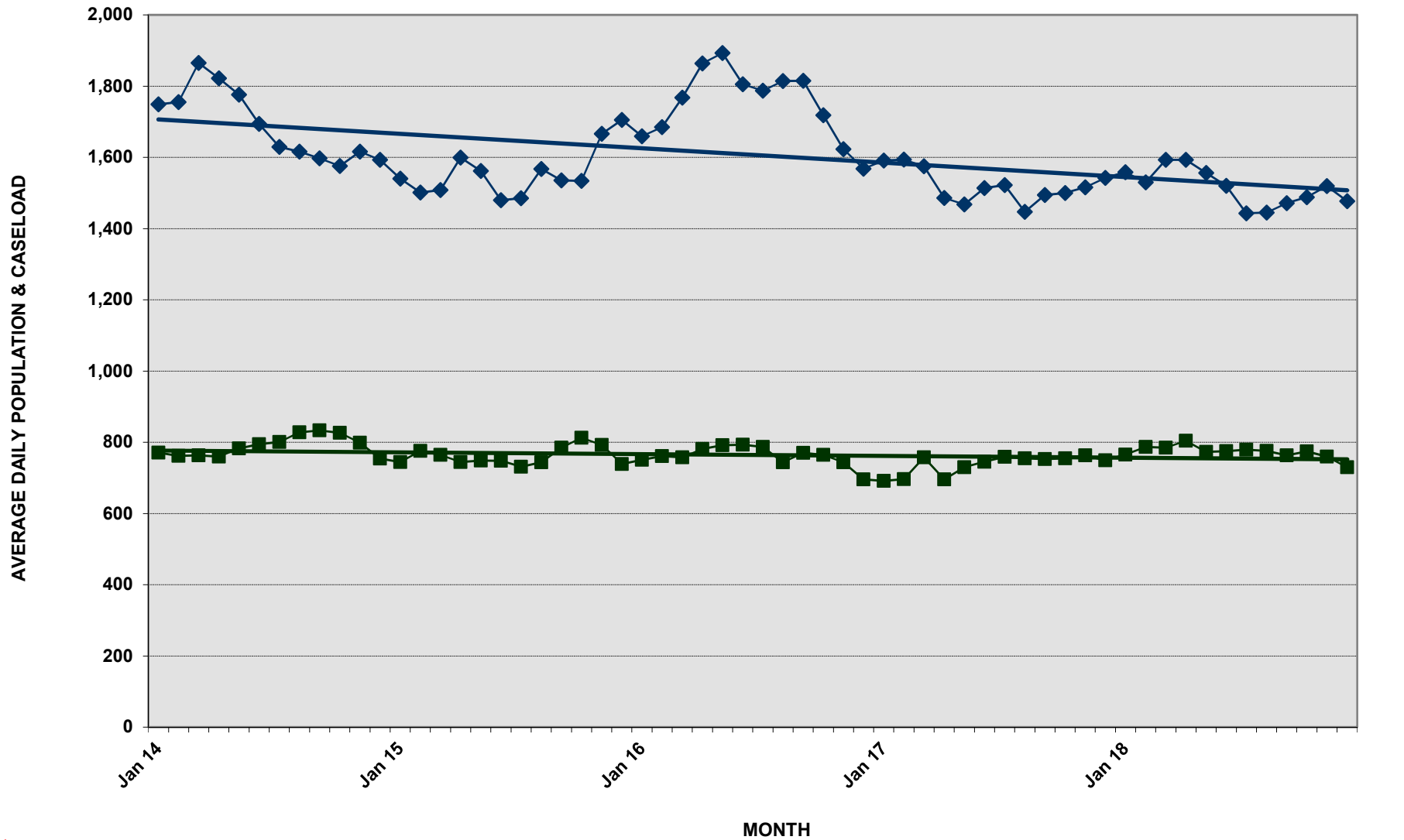


DEPARTMENT OF CORRECTION AND REHABILITATION

PRE-TRIAL AVERAGE DAILY CASELOAD *

DETENTION SERVICES AND PRE-RELEASE AVERAGE DAILY POPULATION

JANUARY 1, 2014 - DECEMBER 31, 2018



* New Jail Opens, MCCF March 2003 = 902

* PTS Average Caseload -Number of Criminal Justice Clients under Pre-Trial Services (ACS, IPSA, PTSU)

◆ PTS Average Caseload ■ DOCR ADP



DEPARTMENT OF CORRECTION AND REHABILITATION
PRE-TRIAL AVERAGE DAILY CASELOAD*
DETENTION SERVICES AND PRE-RELEASE AVERAGE DAILY POPULATION
JANUARY 2014 - PRESENT

YEAR 2014

DIVISION	JAN	FEB	MAR	APR	MAY	JUN	JUL	AUG	SEP	OCT	NOV	DEC	14
MCDC	81	75	78	83	77	79	73	78	75	71	78	69	76
PRRS	144	128	127	123	129	143	158	155	147	154	160	162	144
MCCF	546	559	558	553	578	573	569	594	611	603	561	524	569
Average (ADP)	771	762	763	759	783	795	801	828	833	827	798	754	789
PTS Average Caseload	1,749	1,755	1,865	1,822	1,776	1,694	1,629	1,616	1,597	1,576	1,616	1,593	1,691

YEAR 2015

DIVISION	JAN	FEB	MAR	APR	MAY	JUN	JUL	AUG	SEP	OCT	NOV	DEC	15
MCDC	77	77	69	64	75	67	73	82	80	76	75	68	74
PRRS	162	163	164	162	166	162	154	147	146	137	135	138	153
MCCF	505	536	532	518	507	519	503	515	559	600	583	533	534
Average (ADP)	745	775	765	744	748	748	731	744	784	812	792	739	761
PTS Average Caseload	1,540	1,501	1,508	1,599	1,562	1,480	1,485	1,567	1,535	1,534	1,666	1,705	1,557

YEAR 2016

DIVISION	JAN	FEB	MAR	APR	MAY	JUN	JUL	AUG	SEP	OCT	NOV	DEC	16
MCDC	73	67	71	75	72	71	71	61	67	69	60	59	68
PRRS	124	119	124	132	130	134	130	122	124	126	123	119	126
MCCF	554	575	563	574	589	588	586	561	580	569	560	517	568
Average (ADP)	750	761	758	781	792	793	787	744	770	765	743	695	762
PTS Average Caseload	1,659	1,685	1,768	1,864	1,893	1,805	1,787	1,814	1,815	1,718	1,623	1,568	1,750

YEAR 2017

DIVISION	JAN	FEB	MAR	APR	MAY	JUN	JUL	AUG	SEP	OCT	NOV	DEC	17
MCDC	58	59	71	66	63	61	57	57	62	59	63	53	61
PRRS	124	129	124	121	116	128	129	120	108	108	105	107	118
MCCF	510	508	563	509	551	556	573	578	583	588	595	590	559
Average (ADP)	691	697	758	696	730	745	759	755	753	755	763	749	738
PTS Average Caseload	1,591	1,594	1,575	1,486	1,468	1,514	1,522	1,447	1,494	1,500	1,516	1,542	1,521

YEAR 2018

DIVISION	JAN	FEB	MAR	APR	MAY	JUN	JUL	AUG	SEP	OCT	NOV	* DEC	18
MCDC	59	61	56	61	55	52	54	51	65	58	50	57	57
PRRS	113	116	119	119	110	110	108	112	111	120	116	112	114
MCCF	593	610	610	624	608	613	617	613	587	596	594	561	602
Average (ADP)	765	787	785	804	773	775	779	776	763	774	760	730	773
PTS Average Caseload	1,558	1,530	1,593	1,593	1,556	1,520	1,443	1,445	1,471	1,488	1,519	1,477	1,516

ADP - Average Daily Population (Include Weekenders)

PTS Average Caseload - Number of Criminal Justice Clients under Pre-Trial Services (ACS, IPSA, PTSU)

*December 1, 2018 - December 31, 2018