

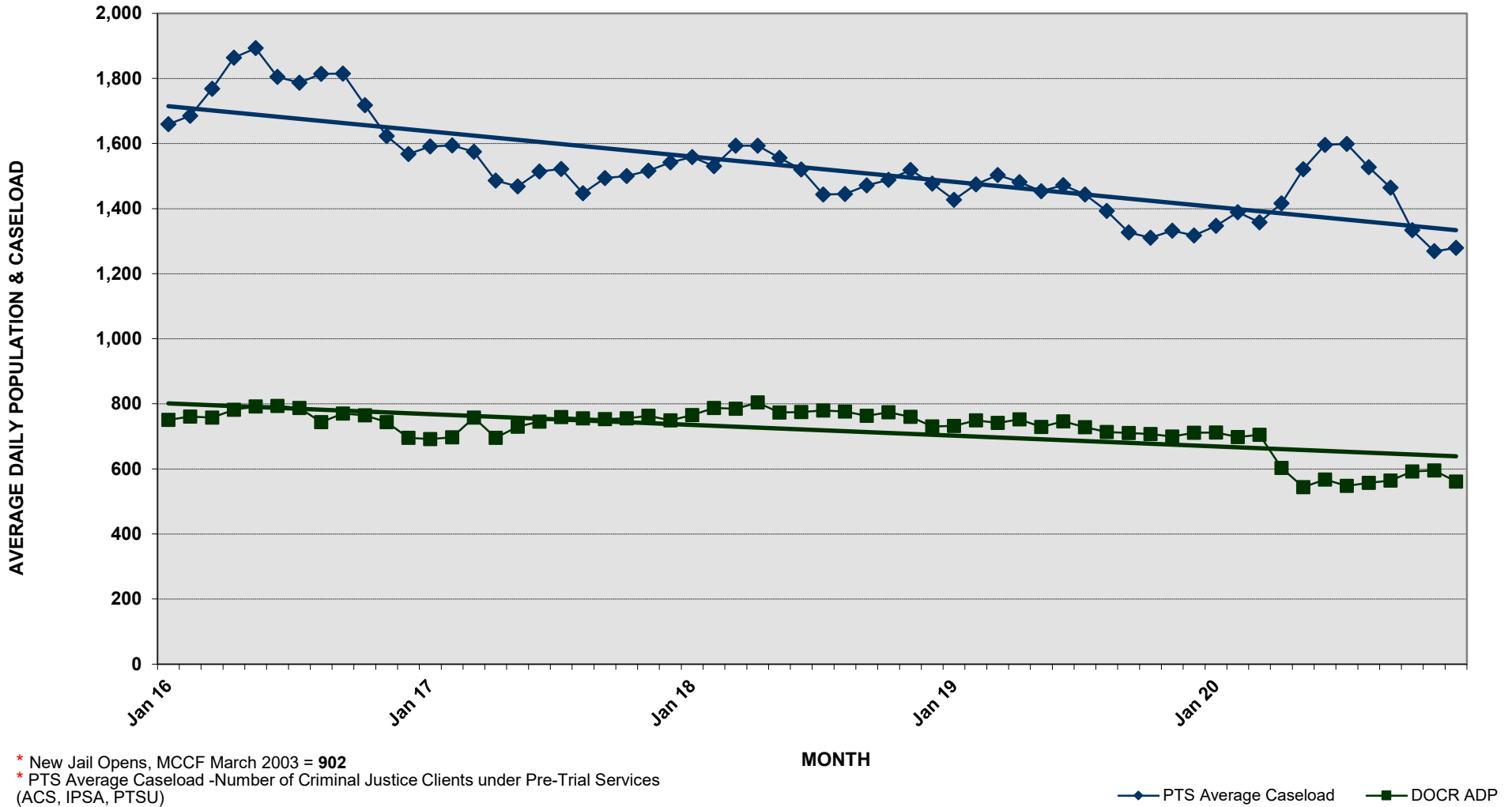


## DEPARTMENT OF CORRECTION AND REHABILITATION

### PRE-TRIAL AVERAGE DAILY CASELOAD \*

### DETENTION SERVICES AND PRE-RELEASE AVERAGE DAILY POPULATION

#### JANUARY 1, 2016 - DECEMBER 31, 2020



\* New Jail Opens, MCCF March 2003 = 902  
 \* PTS Average Caseload -Number of Criminal Justice Clients under Pre-Trial Services (ACS, IPSA, PTSU)

◆ PTS Average Caseload    ■ DOCR ADP



**DEPARTMENT OF CORRECTION AND REHABILITATION**  
**PRE-TRIAL AVERAGE DAILY CASELOAD\***  
**DETENTION SERVICES AND PRE-RELEASE AVERAGE DAILY POPULATION**  
**JANUARY 2016 - PRESENT**

**YEAR 2016**

DIVISION	JAN	FEB	MAR	APR	MAY	JUN	JUL	AUG	SEP	OCT	NOV	DEC	16
MCDC	73	67	71	75	72	71	71	61	67	69	60	59	<b>68</b>
PRRS	124	119	124	132	130	134	130	122	124	126	123	119	<b>126</b>
MCCF	554	575	563	574	589	588	586	561	580	569	560	517	<b>568</b>
<b>Average (ADP)</b>	<b>750</b>	<b>761</b>	<b>758</b>	<b>781</b>	<b>792</b>	<b>793</b>	<b>787</b>	<b>744</b>	<b>770</b>	<b>765</b>	<b>743</b>	<b>695</b>	<b>762</b>
<b>PTS Average Caseload</b>	<b>1,659</b>	<b>1,685</b>	<b>1,768</b>	<b>1,864</b>	<b>1,893</b>	<b>1,805</b>	<b>1,787</b>	<b>1,814</b>	<b>1,815</b>	<b>1,718</b>	<b>1,623</b>	<b>1,568</b>	<b>1,750</b>

**YEAR 2017**

DIVISION	JAN	FEB	MAR	APR	MAY	JUN	JUL	AUG	SEP	OCT	NOV	DEC	17
MCDC	58	59	71	66	63	61	57	57	62	59	63	53	<b>61</b>
PRRS	124	129	124	121	116	128	129	120	108	108	105	107	<b>118</b>
MCCF	510	508	563	509	551	556	573	578	583	588	595	590	<b>559</b>
<b>Average (ADP)</b>	<b>691</b>	<b>697</b>	<b>758</b>	<b>696</b>	<b>730</b>	<b>745</b>	<b>759</b>	<b>755</b>	<b>753</b>	<b>755</b>	<b>763</b>	<b>749</b>	<b>738</b>
<b>PTS Average Caseload</b>	<b>1,591</b>	<b>1,594</b>	<b>1,575</b>	<b>1,486</b>	<b>1,468</b>	<b>1,514</b>	<b>1,522</b>	<b>1,447</b>	<b>1,494</b>	<b>1,500</b>	<b>1,516</b>	<b>1,542</b>	<b>1,521</b>

**YEAR 2018**

DIVISION	JAN	FEB	MAR	APR	MAY	JUN	JUL	AUG	SEP	OCT	NOV	DEC	18
MCDC	59	61	56	61	55	52	54	51	65	58	50	57	<b>57</b>
PRRS	113	116	119	119	110	110	108	112	111	120	116	112	<b>114</b>
MCCF	593	610	610	624	608	613	617	613	587	596	594	561	<b>602</b>
<b>Average (ADP)</b>	<b>765</b>	<b>787</b>	<b>785</b>	<b>804</b>	<b>773</b>	<b>775</b>	<b>779</b>	<b>776</b>	<b>763</b>	<b>774</b>	<b>760</b>	<b>730</b>	<b>773</b>
<b>PTS Average Caseload</b>	<b>1,558</b>	<b>1,530</b>	<b>1,593</b>	<b>1,593</b>	<b>1,556</b>	<b>1,520</b>	<b>1,443</b>	<b>1,445</b>	<b>1,471</b>	<b>1,488</b>	<b>1,519</b>	<b>1,477</b>	<b>1,516</b>

**YEAR 2019**

DIVISION	JAN	FEB	MAR	APR	MAY	JUN	JUL	AUG	SEP	OCT	NOV	DEC	19
MCDC	58	62	61	59	55	63	56	52	54	47	59	48	<b>56</b>
PRRS	115	112	107	99	101	104	98	97	97	99	100	99	<b>102</b>
MCCF	559	575	573	594	573	579	574	564	559	561	540	564	<b>568</b>
<b>Average (ADP)</b>	<b>732</b>	<b>749</b>	<b>741</b>	<b>752</b>	<b>729</b>	<b>746</b>	<b>728</b>	<b>713</b>	<b>710</b>	<b>707</b>	<b>699</b>	<b>711</b>	<b>726</b>
<b>PTS Average Caseload</b>	<b>1,427</b>	<b>1,474</b>	<b>1,503</b>	<b>1,481</b>	<b>1,453</b>	<b>1,472</b>	<b>1,443</b>	<b>1,393</b>	<b>1,327</b>	<b>1,310</b>	<b>1,332</b>	<b>1,317</b>	<b>1,411</b>

**YEAR 2020**

DIVISION	JAN	FEB	MAR	APR	MAY	JUN	JUL	AUG	SEP	OCT	NOV	* DEC	20
MCDC	58	55	46	45	54	63	55	59	60	70	65	47	<b>56</b>
PRRS	97	107	114	67	29	16	0	0	0	0	0	0	<b>72</b>
MCCF	557	536	545	491	461	488	493	498	504	522	530	514	<b>512</b>
<b>Average (ADP)</b>	<b>712</b>	<b>698</b>	<b>705</b>	<b>603</b>	<b>544</b>	<b>567</b>	<b>548</b>	<b>557</b>	<b>564</b>	<b>592</b>	<b>595</b>	<b>561</b>	<b>604</b>
<b>PTS Average Caseload</b>	<b>1,347</b>	<b>1,389</b>	<b>1,358</b>	<b>1,416</b>	<b>1,521</b>	<b>1,596</b>	<b>1,599</b>	<b>1,527</b>	<b>1,464</b>	<b>1,334</b>	<b>1,269</b>	<b>1,279</b>	<b>1,425</b>

\*\*ADP\*\* - Average Daily Population (Include Weekenders)

\*\*PTS Average Caseload\*\* - Number of Criminal Justice Clients under Pre-Trial Services (ACS, IPSA, PTSU)

\*\*Due to COVID, PRRS did not have any residents from JUL-DEC 2020.

\*December 1, 2020 - December 31, 2020