

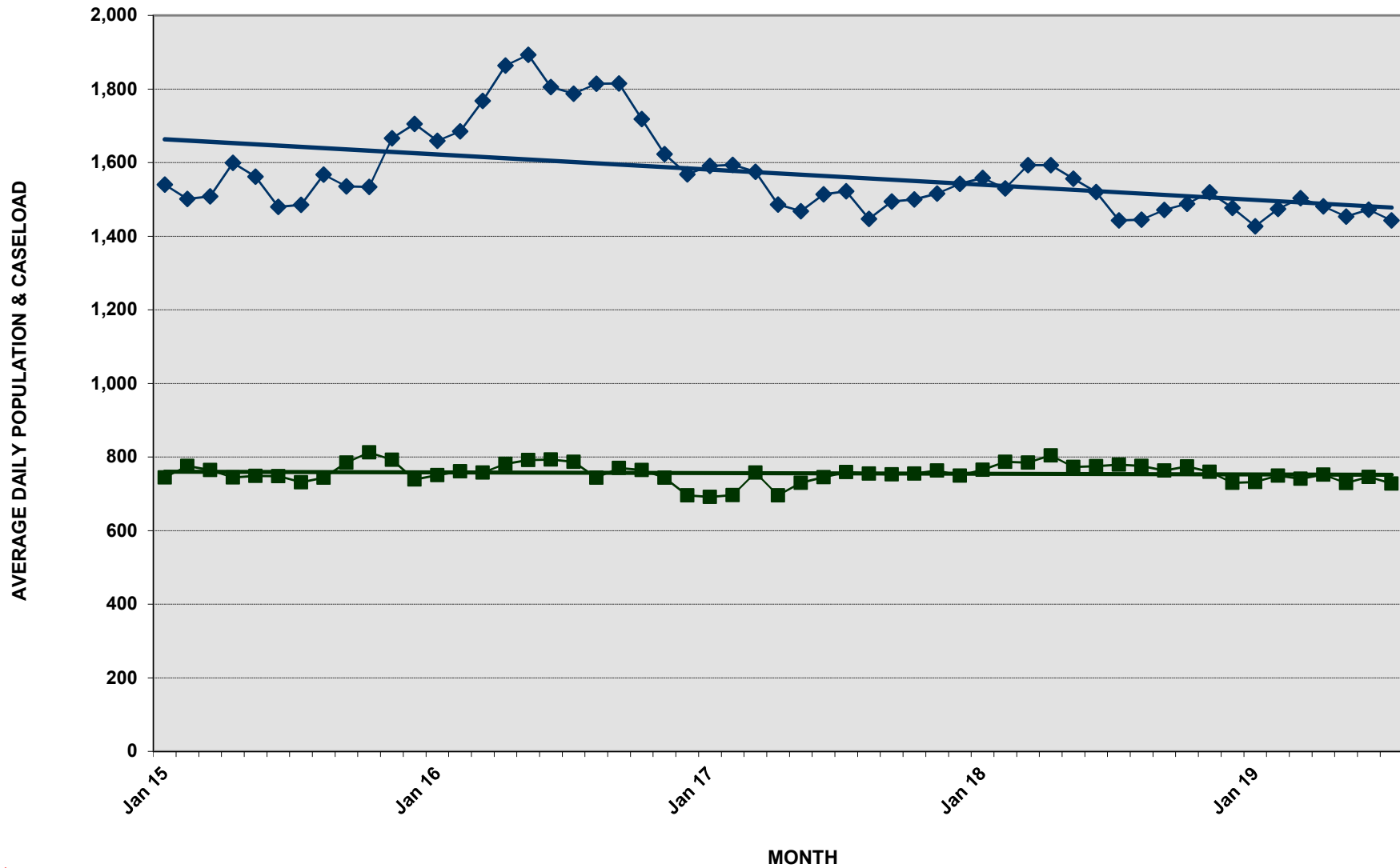


# DEPARTMENT OF CORRECTION AND REHABILITATION

## PRE-TRIAL AVERAGE DAILY CASELOAD \*

### DETENTION SERVICES AND PRE-RELEASE AVERAGE DAILY POPULATION

JANUARY 1, 2015 - JULY 31, 2019



\* New Jail Opens, MCCF March 2003 = 902

\* PTS Average Caseload -Number of Criminal Justice Clients under Pre-Trial Services (ACS, IPSA, PTSU)

◆ PTS Average Caseload    ■ DOCR ADP



**DEPARTMENT OF CORRECTION AND REHABILITATION  
PRE-TRIAL AVERAGE DAILY CASELOAD\*  
DETENTION SERVICES AND PRE-RELEASE AVERAGE DAILY POPULATION  
JANUARY 2015 - PRESENT**

**YEAR 2015**

<b>DIVISION</b>	<b>JAN</b>	<b>FEB</b>	<b>MAR</b>	<b>APR</b>	<b>MAY</b>	<b>JUN</b>	<b>JUL</b>	<b>AUG</b>	<b>SEP</b>	<b>OCT</b>	<b>NOV</b>	<b>DEC</b>	<b>15</b>
MCDC	77	77	69	64	75	67	73	82	80	76	75	68	74
PRRS	162	163	164	162	166	162	154	147	146	137	135	138	153
MCCF	505	536	532	518	507	519	503	515	559	600	583	533	534
<b>Average (ADP)</b>	<b>745</b>	<b>775</b>	<b>765</b>	<b>744</b>	<b>748</b>	<b>748</b>	<b>731</b>	<b>744</b>	<b>784</b>	<b>812</b>	<b>792</b>	<b>739</b>	<b>761</b>
<b>PTS Average Caseload</b>	<b>1,540</b>	<b>1,501</b>	<b>1,508</b>	<b>1,599</b>	<b>1,562</b>	<b>1,480</b>	<b>1,485</b>	<b>1,567</b>	<b>1,535</b>	<b>1,534</b>	<b>1,666</b>	<b>1,705</b>	<b>1,557</b>

**YEAR 2016**

<b>DIVISION</b>	<b>JAN</b>	<b>FEB</b>	<b>MAR</b>	<b>APR</b>	<b>MAY</b>	<b>JUN</b>	<b>JUL</b>	<b>AUG</b>	<b>SEP</b>	<b>OCT</b>	<b>NOV</b>	<b>DEC</b>	<b>16</b>
MCDC	73	67	71	75	72	71	71	61	67	69	60	59	68
PRRS	124	119	124	132	130	134	130	122	124	126	123	119	126
MCCF	554	575	563	574	589	588	586	561	580	569	560	517	568
<b>Average (ADP)</b>	<b>750</b>	<b>761</b>	<b>758</b>	<b>781</b>	<b>792</b>	<b>793</b>	<b>787</b>	<b>744</b>	<b>770</b>	<b>765</b>	<b>743</b>	<b>695</b>	<b>762</b>
<b>PTS Average Caseload</b>	<b>1,659</b>	<b>1,685</b>	<b>1,768</b>	<b>1,864</b>	<b>1,893</b>	<b>1,805</b>	<b>1,787</b>	<b>1,814</b>	<b>1,815</b>	<b>1,718</b>	<b>1,623</b>	<b>1,568</b>	<b>1,750</b>

**YEAR 2017**

<b>DIVISION</b>	<b>JAN</b>	<b>FEB</b>	<b>MAR</b>	<b>APR</b>	<b>MAY</b>	<b>JUN</b>	<b>JUL</b>	<b>AUG</b>	<b>SEP</b>	<b>OCT</b>	<b>NOV</b>	<b>DEC</b>	<b>17</b>
MCDC	58	59	71	66	63	61	57	57	62	59	63	53	61
PRRS	124	129	124	121	116	128	129	120	108	108	105	107	118
MCCF	510	508	563	509	551	556	573	578	583	588	595	590	559
<b>Average (ADP)</b>	<b>691</b>	<b>697</b>	<b>758</b>	<b>696</b>	<b>730</b>	<b>745</b>	<b>759</b>	<b>755</b>	<b>753</b>	<b>755</b>	<b>763</b>	<b>749</b>	<b>738</b>
<b>PTS Average Caseload</b>	<b>1,591</b>	<b>1,594</b>	<b>1,575</b>	<b>1,486</b>	<b>1,468</b>	<b>1,514</b>	<b>1,522</b>	<b>1,447</b>	<b>1,494</b>	<b>1,500</b>	<b>1,516</b>	<b>1,542</b>	<b>1,521</b>

**YEAR 2018**

<b>DIVISION</b>	<b>JAN</b>	<b>FEB</b>	<b>MAR</b>	<b>APR</b>	<b>MAY</b>	<b>JUN</b>	<b>JUL</b>	<b>AUG</b>	<b>SEP</b>	<b>OCT</b>	<b>NOV</b>	<b>DEC</b>	<b>18</b>
MCDC	59	61	56	61	55	52	54	51	65	58	50	57	57
PRRS	113	116	119	119	110	110	108	112	111	120	116	112	114
MCCF	593	610	610	624	608	613	617	613	587	596	594	561	602
<b>Average (ADP)</b>	<b>765</b>	<b>787</b>	<b>785</b>	<b>804</b>	<b>773</b>	<b>775</b>	<b>779</b>	<b>776</b>	<b>763</b>	<b>774</b>	<b>760</b>	<b>730</b>	<b>773</b>
<b>PTS Average Caseload</b>	<b>1,558</b>	<b>1,530</b>	<b>1,593</b>	<b>1,593</b>	<b>1,556</b>	<b>1,520</b>	<b>1,443</b>	<b>1,445</b>	<b>1,471</b>	<b>1,488</b>	<b>1,519</b>	<b>1,477</b>	<b>1,516</b>

**YEAR 2019**

<b>DIVISION</b>	<b>JAN</b>	<b>FEB</b>	<b>MAR</b>	<b>APR</b>	<b>MAY</b>	<b>JUN</b>	<b>* JUL</b>	<b>AUG</b>	<b>SEP</b>	<b>OCT</b>	<b>NOV</b>	<b>DEC</b>	<b>19</b>
MCDC	58	62	61	59	55	63	56						59
PRRS	115	112	107	99	101	104	98						105
MCCF	559	575	573	594	573	579	574						575
<b>Average (ADP)</b>	<b>732</b>	<b>749</b>	<b>741</b>	<b>752</b>	<b>729</b>	<b>746</b>	<b>728</b>						<b>740</b>
<b>PTS Average Caseload</b>	<b>1,427</b>	<b>1,474</b>	<b>1,503</b>	<b>1,481</b>	<b>1,453</b>	<b>1,472</b>	<b>1,443</b>						<b>1,465</b>

\*\*ADP\*\* - Average Daily Population (Include Weekenders)

\*\*PTS Average Caseload\*\* - Number of Criminal Justice Clients under Pre-Trial Services (ACS, IPSA, PTSU)

\*July 1, 2019 - July 31, 2019