

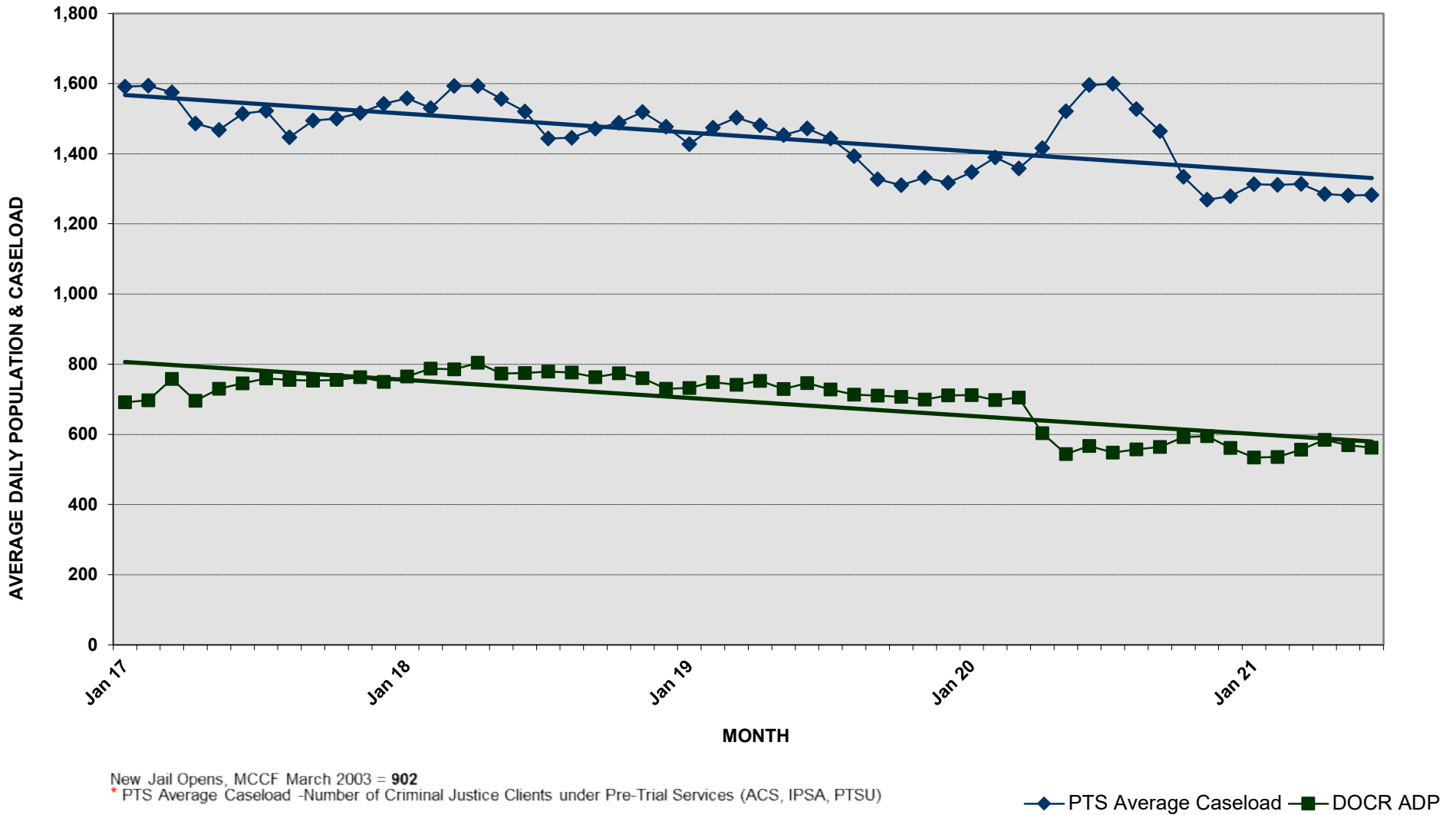


DEPARTMENT OF CORRECTION AND REHABILITATION

PRE-TRIAL AVERAGE DAILY CASELOAD *

DETENTION SERVICES AND PRE-RELEASE AVERAGE DAILY POPULATION

JANUARY 1, 2017 - JUNE 30, 2021





DEPARTMENT OF CORRECTION AND REHABILITATION
PRE-TRIAL AVERAGE DAILY CASELOAD*
DETENTION SERVICES AND PRE-RELEASE AVERAGE DAILY POPULATION
JANUARY 2017 - PRESENT

YEAR 2017

DIVISION	JAN	FEB	MAR	APR	MAY	JUN	JUL	AUG	SEP	OCT	NOV	DEC	17
MCDC	58	59	71	66	63	61	57	57	62	59	63	53	61
PRRS	124	129	124	121	116	128	129	120	108	108	105	107	118
MCCF	510	508	563	509	551	556	573	578	583	588	595	590	559
Average (ADP)	691	697	758	696	730	745	759	755	753	755	763	749	738
PTS Average Caseload	1,591	1,594	1,575	1,486	1,468	1,514	1,522	1,447	1,494	1,500	1,516	1,542	1,521

YEAR 2018

DIVISION	JAN	FEB	MAR	APR	MAY	JUN	JUL	AUG	SEP	OCT	NOV	DEC	18
MCDC	59	61	56	61	55	52	54	51	65	58	50	57	57
PRRS	113	116	119	119	110	110	108	112	111	120	116	112	114
MCCF	593	610	610	624	608	613	617	613	587	596	594	561	602
Average (ADP)	765	787	785	804	773	775	779	776	763	774	760	730	773
PTS Average Caseload	1,558	1,530	1,593	1,593	1,556	1,520	1,443	1,445	1,471	1,488	1,519	1,477	1,516

YEAR 2019

DIVISION	JAN	FEB	MAR	APR	MAY	JUN	JUL	AUG	SEP	OCT	NOV	DEC	19
MCDC	58	62	61	59	55	63	56	52	54	47	59	48	56
PRRS	115	112	107	99	101	104	98	97	97	99	100	99	102
MCCF	559	575	573	594	573	579	574	564	559	561	540	564	568
Average (ADP)	732	749	741	752	729	746	728	713	710	707	699	711	726
PTS Average Caseload	1,427	1,474	1,503	1,481	1,453	1,472	1,443	1,393	1,327	1,310	1,332	1,317	1,411

YEAR 2020

DIVISION	JAN	FEB	MAR	APR	MAY	JUN	JUL	AUG	SEP	OCT	NOV	DEC	20
MCDC	58	55	46	45	54	63	55	59	60	70	65	47	56
PRRS	97	107	114	67	29	16	0	0	0	0	0	0	72
MCCF	557	536	545	491	461	488	493	498	504	522	530	514	512
Average (ADP)	712	698	705	603	544	567	548	557	564	592	595	561	604
PTS Average Caseload	1,347	1,389	1,358	1,416	1,521	1,596	1,599	1,527	1,464	1,334	1,269	1,279	1,425

YEAR 2021

DIVISION	JAN	FEB	MAR	APR	MAY	* JUN	JUL	AUG	SEP	OCT	NOV	DEC	21
MCDC	53	50	51	46	53	53							51
PRRS	0	0	0	0	0	0							0
MCCF	481	485	505	538	516	509							506
Average (ADP)	534	535	556	584	569	562							557
PTS Average Caseload	1,313	1,311	1,314	1,285	1,281	1,282							1,298

ADP - Average Daily Population (Include Weekenders)

PTS Average Caseload - Number of Criminal Justice Clients under Pre-Trial Services (ACS, IPSA, PTSU)

**Due to COVID, PRRS did not have any residents from JUL 2020 - JUN 2021.

*June 1, 2021 - June 30, 2021